

DISCPORT[®] XL



DiscPort XL
THE NEXT
GENERATION,
HIGH-PERFORMANCE
CD-ROM NETWORKING
SOLUTION THAT ENABLES
NETWARE AND
WINDOWS NT
WORKGROUPS TO SHARE
UP TO 7 CD-ROM
DEVICES
SIMULTANEOUSLY.

Your CD-ROM sharing solution should keep up with the demands of your growing network. If you're looking for Windows NT[™] and NetWare[®] compatibility, increased speed and performance—look no further than DiscPort XL, the CD-ROM networking solution for workgroups that offers speed and compatibility in one. With DiscPort XL, you can access up to 7 CD devices (drives or changers) within Novell and Windows NT workgroups as easily as accessing an application on a file server.

DISCPORT XL MAKES SHARING CDS EFFORTLESS.

DiscPort XL is easy to install and requires no TSRs or client software on your workstations. Attach DiscPort XL anywhere on your Thin Ethernet or

10BASE-T network and install DiscView[®] PRO management software. Attach up to 7 CD-ROM devices per DiscPort XL and load your CD-ROM titles.

DiscPort XL supports 8X CD-ROM drives on your 10 Mbps network and works with popular CD-ROM drives, towers and disc changers.

And as your network grows, it's easy to add more DiscPort XLs, other workgroup products or enterprise solutions. All products in the Microtest line work together seamlessly.

ONE DEVICE SUPPORTS NETWARE AND WINDOWS NT NETWORKS.

Whether you're running NetWare, Windows NT or a combination of the two, DiscPort XL works with both operating systems.

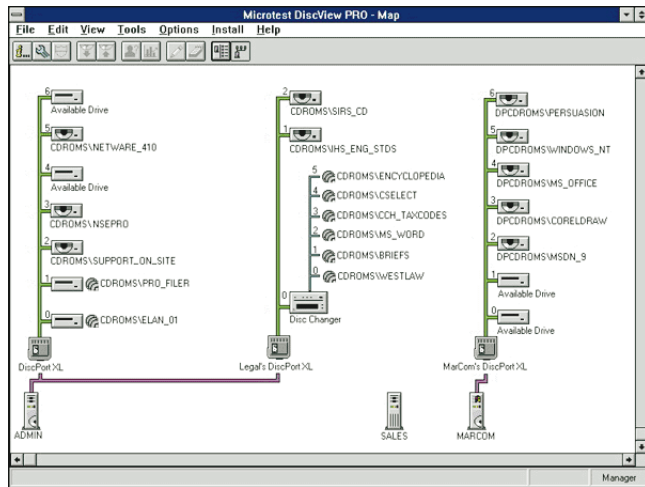
Administrators will find sharing CD-ROMs effortless with DiscView PRO software, Microtest's CD-ROM management interface. DiscView PRO includes SmartLaunch[™], the totally transparent user interface that allows users to access CD-ROM titles from all products in the line with point-and-click simplicity. It supports ISO 9660, HFS (Macintosh), CD-I/Bridge and Photo CDs on NetWare and ISO 9660 on NT. DiscView PRO allows CD-ROM sharing using as little as 6K of RAM per CD, auto mounts and shares CDs instantly and offers dynamic security and volume sets. CD-ROMs can appear as subdirectories under a single volume, so there is no need to map and unmap numerous drive letters.

- ONE PRODUCT, DISCPORT XL, SUPPORTS BOTH NETWARE AND WINDOWS NT NETWORKS.
- EASY TO INSTALL, DISCPORT XL PLUGS INTO ANY NETWORK CONNECTION.
- INCLUDES ONE SCSI PORT PROVIDING NETWORK USERS SIMULTANEOUS ACCESS TO AS MANY AS 7 CD-ROM DEVICES PER DISCPORT XL.
- LETS YOU PHYSICALLY PLACE CDS WITHIN WORKGROUPS ALLOWING LOCAL CONTROL OF AND ACCESS TO CD-ROM LIBRARIES.
- INCLUDES DISCVIEW PRO GRAPHICAL USER INTERFACE MAKING DISCPORT XL EASY TO MANAGE AND USE.
- SUPPORTS MULTIPLE PROTOCOLS INCLUDING IPX/SPX AND TCP/IP.
- DISCPORT XL WORKS SEAMLESSLY WITH ADDITIONAL DISCPORT XLS OR OTHER MICROTEST WORKGROUP AND ENTERPRISE SOLUTIONS.

DISCPORT XL

DISCPORT XL OFFERS HIGH-PERFORMANCE ATTACH & ACCESS CD-ROM SHARING. WORKGROUPS SIMPLY PLUG DISCPORT XL ONTO THEIR NETWARE AND WINDOWS NT NETWORKS, ATTACH UP TO 7 CD-ROM DEVICES, INSTALL DISCVIEW PRO MANAGEMENT SOFTWARE AND LOAD THE CD-ROMS. ACCESSING A CD TITLE IS AS EASY AS ACCESSING AN APPLICATION ON THE FILESERVER.

DISCVIEW PRO MANAGEMENT WINDOW



SPECIFICATIONS

PRODUCT PACKAGE

- DiscPort XL Hardware
- DiscView PRO Software
- DiscPort XL to SCSI Cable
- DiscPort Family Getting Started Guide
- DiscView User Guide

PART NUMBERS

US	#9160-00
Europe	#9160-01
UK	#9160-02
Australia	#9160-03
International	#9160-04

SCSI PORT

- High-Density Mini-D Connector

FILESERVER REQUIREMENTS

- NetWare 3.11 or higher with 8 MB of RAM
- OR-
- Windows NT 3.51 (Intel-based) with 16 MB RAM

ETHERNET COMPATIBILITY

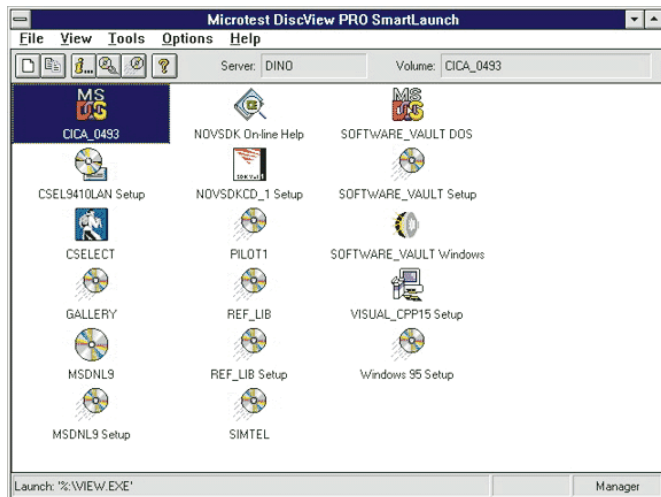
- Thin Ethernet RG-58 A/U BNC, and 10BASE-T Twisted Pair RJ-45 Connectors
- IPX: 802.2, 802.3, Ethernet II or SNAP frame types
- TCP/IP: Ethernet II frame type

WORKSTATION REQUIREMENTS

- Windows 3.1 or higher recommended
- At least 4 MB RAM recommended
- Macintosh running system 6.0.7 or higher and Novell NetWare for Macintosh

- Allows your networked CD-ROMs to appear as subdirectories of a single drive letter — no need to map and unmap numerous DOS drive letters
- Offers drag-and-drop CD-ROM management
- Integrates NetWare and NT security, caching, and usage statistics for your CD-ROMs
- Instantly mounts and shares CD-ROM titles
- Offers dynamic security and dynamic volume sets for easy management
- Integrates with NetWare Directory Services (NDS) and NT Domains
- Provides cache control for managing server resources

DISCVIEW PRO SMARTLAUNCH WINDOW



- Automatically prepares and mounts your CD-ROMs—users can access titles with point-and-click simplicity
- CD Format Support: NT - ISO 9660, NetWare - ISO 9660, HFS (Macintosh), CD-I/Bridge, and Photo CDs
- Allows easy access by DOS, Windows, Macintosh, UNIX, and OS/2 clients to CD-ROMs attached to DiscPort XL



MICROTEST®

Microtest, Inc.
4747 North 22nd Street
Phoenix, Arizona
85016-4708
TEL (602)952-6400
FAX (602)952-6401
<http://www.microtest.com>
E-mail: sales@microtest.com

Microtest Europe
2A Kingfisher House,
Northwood Park
Gatwick Road
Crawley, West Sussex, RH10 2XN
TEL: +44 (0) 1293 894000
FAX +44 (0) 1293 894008
E-mail: salesmte@microtest.com

©1995, 1996 Microtest, Inc., DiscPort and DiscView are registered trademarks of Microtest, Inc. All rights reserved. Specification and price change privileges reserved. Some of the product names mentioned herein have been used for identification purposes only and may be trademarks and/or registered trademarks of their respective companies. Information subject to change without notice.