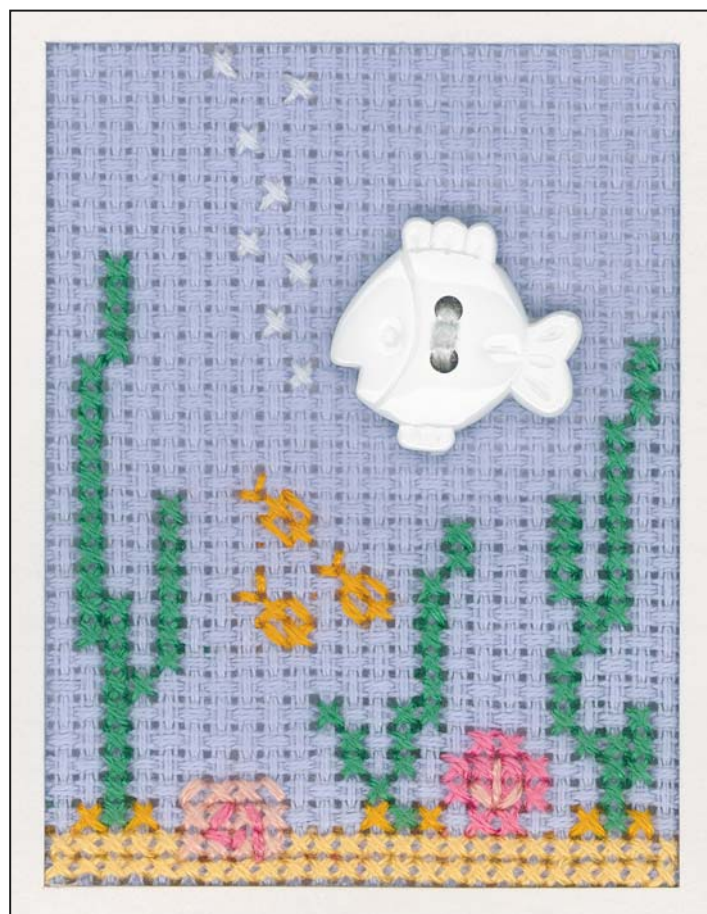
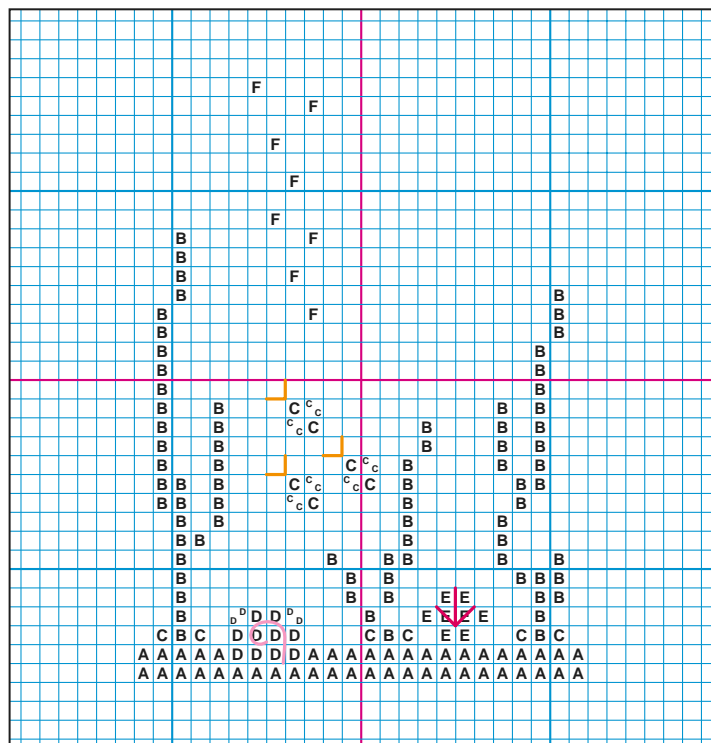


# Fish & Stitch

By Lin Collier



Stitched on 14 count Pale Blue Aida using 2 strands for the cross stitch and 1 strand for the backstitch. This design fits an AP18U card. Stitch Count: Width 24 x Depth 32.

When the design is completed position and stitch on a white fish shaped button and add a bow to the card mount.

## ANCHOR

## DMC MADEIRA

A - 311	Pale Orange	743	2013
B - 227	Green	910	1214
C - 304	Orange	741	0203
D - 08	Pale Pink	963	0304
E - 41	Dark Pink	335	0413
F - 1	White	White	White
— - 304	Orange Backst.	741	0203
— - 08	Pale Pink Backst.	963	0304
— - 41	Dark Pink Backst.	335	0413

This card has been stitched using Anchor thread. Using DMC or Madeira threads may give a slightly different, although equally pleasing, finished result.

# Craft CREATIONS<sup>Ltd</sup> Magazine

Hello,

We hope you enjoy this free project. You may hand make copies of this project, to give away or sell, as many times as you like. You may not use the pattern, project, text or pictures for any other purpose nor make the project using any automated process.

The project was taken from a back issue of the Craft Creations Magazine.

All the articles on our web site are at least one year old. If you want the latest projects, designer profiles, gallery pages and more, then you need to subscribe to the quarterly Craft Creations Magazine.

## *Subscription Benefits Include:*

- \* A free gift with every issue.
- \* Two discount vouchers off Craft Creations products with every issue.
- \* A £2.50 off post and packing voucher with every issue.
- \* New product information.
- \* Prize competitions in every issue.

You can subscribe to the quarterly Craft Creations Magazine or purchase any of the back issues from our online shop.

<http://www.craftcreations.com/Shop/shop.html>