



# YAK'S CORNER TEACHER GUIDE

This week we read about Utah's state insect, the honeybee. We also read about the opening and closing ceremonies of the 2002 Winter Games.

## Honey of an Insect

**ACTIVITY:** Each kind of honeybee in a hive has an important and well-defined role. Identify the job of each of the following kinds of bee: queen, drone, worker.

**STANDARD:** Students will investigate and understand how an animal community works.

### Sweet!



Honey

**ACTIVITY:** Honey is a form of sugar. Name as many other forms of sugar as you can think of. Try to name at least three kinds of liquid sugars and three kind of solid sugars. If you need ideas, look on the labels of sweet foods.

**STANDARDS:** Students will be able to identify various forms of sugars in food. Students will recognize that some substances appear in multiple forms.

## Cultural Icon

**ACTIVITY:** Five interlocking rings are a symbol of the Olympics. What other symbols do you see every day and immediately know what they stand for, even though there are no words attached? See how many of these symbols you can sketch, and then write what they represent. One example: A dove is an international symbol of peace.

**STANDARD:** Students will recognize and understand important cultural symbols.

## Let's Play

**ACTIVITY:** Compile a list of all the Olympic sports included in the Winter Games. Once you've found the names of the sports, classify them into categories according to shared characteristics.

**STANDARDS:** Students will use a variety of resources to gather information. Students will evaluate and classify a series of items.

## Paper Caper

**ACTIVITY:** The honeybee is the state insect of Utah because these insects are industrious and cooperative — two traits that are highly valued in a community. Find stories in your newspaper about people who display those traits. For each story you find, write a brief description of what the people have done that shows industry or cooperation. Then explain how their efforts have contributed to the welfare of their community.

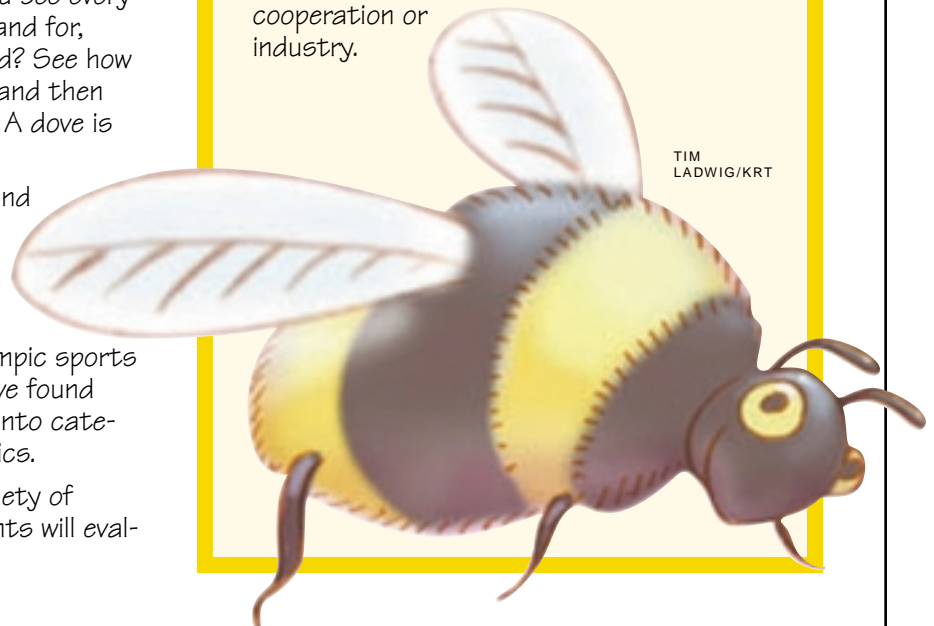


CHUCK KENNEDY/KRT

**Although productive, honeybees only have a lifespan of about 30 days.**

**STANDARD:** Students will recognize the qualities of good citizenship.

**EXTRA CREDIT:** Write a paragraph in which you tell how you should demonstrate cooperation or industry.



TIM LADWIG/KRT



# YAK'S CORNER ACTIVITY SHEET

www.yakscorner.com

Hey kids, this week we read about Utah's state insect, the honeybee. We also read about the opening and closing ceremonies of the 2002 Winter Games.

## Paper Caper

**ACTIVITY:** The honeybee is the state insect of Utah because these insects are industrious and cooperative — two traits that are highly valued in a community. Find a story in your newspaper about a person or a group of people who display those traits. Then answer the questions to the right.

Headline of article: \_\_\_\_\_

How has the person or group described in the article shown industry or cooperation? \_\_\_\_\_

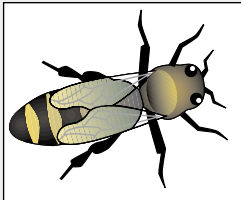
\_\_\_\_\_  
\_\_\_\_\_  
\_\_\_\_\_

How has this person's or group's efforts contributed to the community's welfare? \_\_\_\_\_

\_\_\_\_\_  
\_\_\_\_\_  
\_\_\_\_\_

## Honey of an Insect

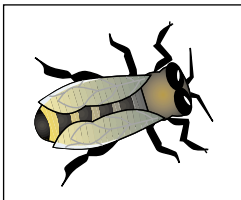
**ACTIVITY:** Each kind of honeybee in a hive has an important and well-defined role. Identify the job of each of the following kinds of bee: queen, drone, worker.



**Queen bee**

Role played in the hive community: \_\_\_\_\_

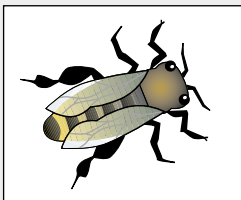
\_\_\_\_\_  
\_\_\_\_\_



**Drone bee**

Role played in the hive community: \_\_\_\_\_

\_\_\_\_\_  
\_\_\_\_\_



**Worker bee**

Role played in the hive community: \_\_\_\_\_

\_\_\_\_\_  
\_\_\_\_\_