

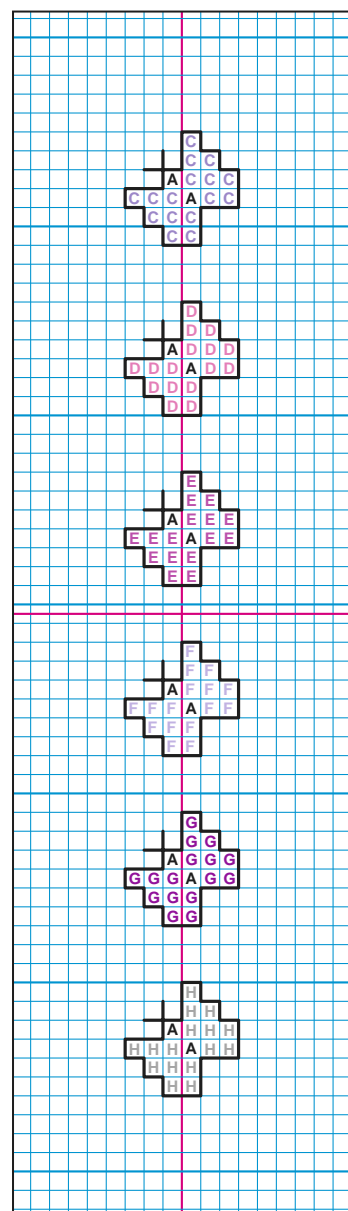
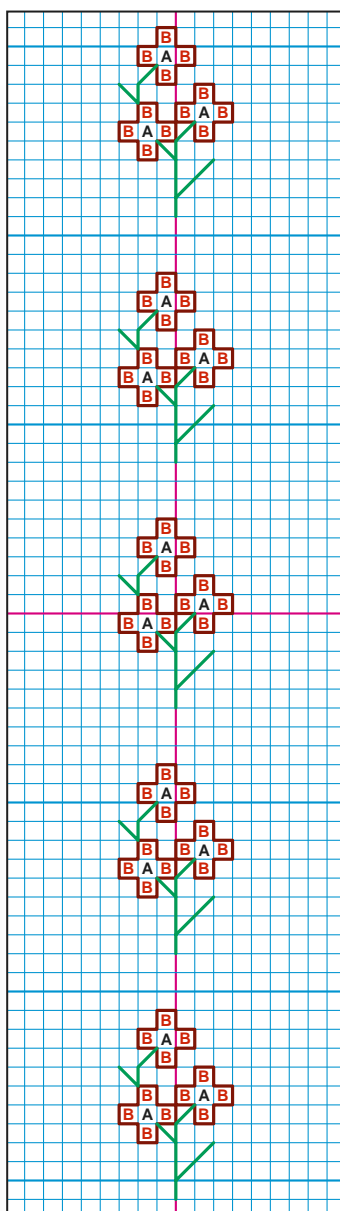
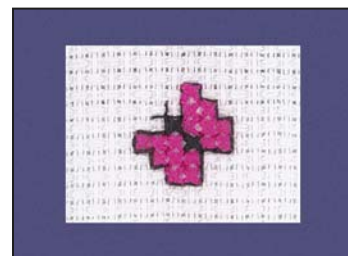
Mini Motifs

By Cynthia Bean

Stitched on 14 count White Aida using 2 strands for the cross stitch and 1 strand for the backstitch. These designs fit BK01U cards.

Flower Stitch Count: width 6 x depth 62.

Butterfly Stitch Count: width 6 x depth 51.



DMC

DMC		ANCHOR	MADEIRA
A - 310	Black	403	Black
B - 666	Bright Red	46	0209
C - 3746	Purple	110	0804
D - 3607	Magenta	86	0708
E - 917	Dk Magenta	89	0706

DMC

F - 210	Lilac	108	0802
G - 552	Dk Mauve	101	0714
H - 3743	Pale Grey	342	0801
— - 310	Black Outline	403	Black
— - 304	Dk Red Outline	47	0211
— - 986	Green Bkstitch	246	1406

ANCHOR MADEIRA

Craft CREATIONS^{Ltd} Magazine

Hello,

We hope you enjoy this free project. You may hand make copies of this project, to give away or sell, as many times as you like. You may not use the pattern, project, text or pictures for any other purpose nor make the project using any automated process.

The project was taken from a back issue of the Craft Creations Magazine.

All the articles on our web site are at least one year old. If you want the latest projects, designer profiles, gallery pages and more, then you need to subscribe to the quarterly Craft Creations Magazine.

Subscription Benefits Include:

- * A free gift with every issue.
- * Two discount vouchers off Craft Creations products with every issue.
- * A £2.50 off post and packing voucher with every issue.
- * New product information.
- * Prize competitions in every issue.

You can subscribe to the quarterly Craft Creations Magazine or purchase any of the back issues from our online shop.

<http://www.craftcreations.com/Shop/shop.html>