



Film Handling Equipment Price List



Hollywood Film Company
3294 East 26th Street, Los Angeles, California 90023
Phone : (323)261-3700 Fax : (323)263-9665
E-Mail : Sales@HollywoodFilmCo.com
Web Page : HollywoodFilmCo.com

Table of Contents

The HFC Editing Suite	Page 1
HFC Work Station Packages	Page 2
Editing and Inspection Tables	Page 3
Light Boxes, Table Racks, Lamps	Page 4
Hand & Power Rewinds	Page 5
Specialized Rewinds and Tightwinds	Page 6
Shafts, Core Adapters, Gimmicks	Page 7
Aluminum Split Reels	Page 8
Micarta Flanges	Page 9
Film Bins, Vault Cans & Racks, Angle Iron Racks	Page 10
Cases, Cores, and Reels	Page 11
Synchronizers	Page 12
Combination Synchronizers	Page 13
Film Racks and Separators	Page 14
"HFC 2K" Ultrasonic Splicer	Page 15
Unicorn Splicer, Cutter, & Tape	Page 16
HFC Tape Splicer & Tape	Page 17
Guillotine Splicer, Repair Splicer & Tape	Page 18
HFC Hot Splicer & Accessories	Page 19
MPST Densitometer	Page 20
HFC Sensitometer	Page 21
HFC Film Services	Back Page

HFC Editing Suite

Complete Package



Editing Table with LightBox and Drawer included; ETBRD-1 part number 003121-000 (24"x60"x31")	<u>details:</u> see page 3	<u>List Price:</u> \$750.00
Table Rack with 4 tiers; 5"Dx57"Wx32"H; TR-1 part number 004444-001	see page 4	\$185.00
Table Lamp with 'A' clamp and florescent bulb; FL-1 part number 003055-000	see page 4	\$225.00
Hand Rewind with Friction/Drag Control; REF part number 003000-002	see page 5	\$193.00
35mm 1-reel Shaft ; R-1 part number 000054-000	see page 7	\$55.00
Power Rewind with 35mm 1-reel shaft and foot pedal switch included; PR1-F part number 000001-000; shaft facing operator shown	see page 5	\$1,550.00
16/35/8mm Combination Tightwind (shown mounted on PR1-F); TWC-1 part number 001681-002	see page 6	\$329.00
Synchronizer 35mm 1-way with standard foot counter part number 002430-000	see page 12	\$850.00
Hot Splicer 16mm/35mm for A&B; domestic; FSC-1A part number 001525-000	see page 19	\$3,440.00
Total price of "The HFC Editing Suite" as pictured.....	Total	\$7,577.00

Price of package if purchased as a unit with no substitutions..	-10%	\$6,819.30
PACKAGE NUMBER <u>003190-000</u>		

Date Printed: 5/15/2002

*Price at time of printing.

All prices are subject to change without notice.

All prices are U.S.Dollars,FOB HFC, LA, CA.

HFC Workstation Packages

Inspection Station (basic)

003130-000 ITBR-1	Inspection Table (no cutout, no lightbox, no drawer) 24"x60"x31" dimensions	\$370.00
004444-002 TR-21	Table Rack, 2-tier, 57" for 60" table.	\$185.00
003000-002 REF	Hand Rewind; 2 x \$193= friction/drag control	\$386.00
000054-000 R-1	Rewind shaft, 2 x \$55= 35mm, 1-reel	\$110.00
001681-002 TWC-1	Tightwind 16/35/8mm comb.	\$329.00
Total.....		\$1,380.00

Price of package if purchased as a unit, save 10%... \$1,242.00

No changes, no substitutions!
Package number 003187-000

Negative Station (basic)

003120-000 ETBR-1	Editing Table, w/ light box 24"x60"x31" dimensions	\$595.00
004444-001 TR-1	Table Rack, 4-tier 57" for 60" table	\$185.00
000061-004 NRUF-2L	Negative Rewind, 2 x \$769= knee action, w/ friction drag, 2000'	\$1,538.00
002430-000	1-way sync, 35mm. w/ std. foot counter	\$850.00
Total.....		\$3,168.00

Price of package if purchased as a unit, save 10%... \$2,851.20

No changes, no substitutions!
Package number 003188-000

Editing Station (basic)

003121-000 ETBRD-1	Editing Table, w/ light box and drawer 24"x60"x31" dimensions	\$750.00
003000-002 REF	Hand Rewind; 2 x \$193= friction/drag control	\$386.00
001681-002 TWC-1	Tightwind 16/35/8mm comb.	\$329.00
004444-001 TR-1	Table Rack,4-tier, 57" for 60" table.	\$185.00
000054-000 R-1	Rewind Shaft 35mm, 1-reel	\$55.00
000057-000 R-4	Rewind Shaft 35mm, 4-reel	\$55.00
003645-000 ENSH-1	Hinged end support (for 4-reel shaft)	\$85.00
Total.....		\$1,845.00

Price of package if purchased as a unit, save 10%... \$1,660.50

No changes, no substitutions!
Package number 003189-000

Alternate packages on request!

All additions to packages are at list price.

Editing and Inspection Tables

TABLES, EDITING

	*Price
003120-000 ETBR-1, 24" x 60" x 31" w/light box	\$595.00
003121-000 ETBRD-1, 24" x 60" x 31" w/light box and drawer	\$750.00
003122-000 ETBR-28, 28" x 60" x 31" w/light box	\$595.00
003123-000 ETBRD-28, 28" x 60" x 31" w/light box and drawer	\$750.00
003125-000 ETBR-728, 28" x 72" x 31" w/light box	\$665.00
003124-000 ETBRD-72 w/light box and drawer	\$805.00

TABLES, INSPECTION (NO CUTOUT, NO LIGHT BOX)

	*Price
003130-000 ITBR-1, 24" x 60" x 31"	\$370.00
003132-000 ITBRD-1, 24" x 60" x 31" w/drawer	\$525.00
003131-000 ITBRD-28, 28" x 60" x 31"	\$410.00
003133-000 ITBRD-28, 28" x 60" x 31" w/drawer	\$570.00
003134-000 ITBR-728, 28" x 72" x 31"	\$465.00
003135-000 ITBRD-728, 28" x 72" x 31" w/drawer	\$720.00

34" high frames available



EDITING TABLE w/ DRAWER (ETBRD-1)
003121-000

Date Printed: 5/15/2002

*Price at time of printing

All prices are subject to change without notice.

All prices are U.S.Dollars, FOB HFC, LA, CA.

Lights, Racks, Etc.

Drawer	* Price
003151-000 D-1 Drawer	\$165.00

LIGHT BOXES	* Price
003140-000 Glass - plexi glass for light well (¼" x 9" x 12 9/16")	\$40.00
003665-000 Lightwell Assy without glass (14 ½" x 12 ¾" x 4 1/8")	\$190.00

TABLE RACKS	*Price
004444-001 TR-1, 4-tier 57" for 60" width table 5"D x 57"W x 32"H	\$185.00
004444-002 TR-21, 2-tier 57" for 60" width table 5"D x 57"W x 16"H	\$185.00
004444-003 TR-72, 4-tier 70" 70" for 72" width table 5"D x 70"W x 32"H	\$205.00
003103-000 TR-722, 2-tier 72" 57" for 60" width table 5"D x 70"W x 32"H	\$275.00

CORE DISPENSER	Diameter	Length	*Price
004439-001	2"	CD 16MM 24"	\$60.00
004439-002	2"	CD 16MM 36"	\$60.00
004439-003	3"	CD 16MM 24"	\$60.00
004439-004	3"	CD 16MM 36"	\$60.00
004439-005	2"	CD 35MM 24"	\$60.00
004439-006	2"	CD 35MM 36"	\$60.00
004439-007	3"	CD 35MM 24"	\$60.00
004439-008	3"	CD 35MM 36"	\$60.00
004439-009	3"	CD 70MM 24"	\$60.00
004439-010	3"	CD 70MM 36"	\$60.00
004439-011	4"	CD 70MM 24"	\$60.00
004439-012	4"	CD 70MM 36"	\$60.00

LAMPS	* Price
LA0125-000 LFM-1 with 'A' Clamp (Magnifier and florescent tube lamp)	\$250.00
003055-000 FL-1 with 'A' Clamp (Florescent lamp)	\$225.00
003056-000 LC-1 with 'A' Clamp (Combination florescent & incandescent lamp)	\$200.00



LIGHT BOX (LB-1)
003665-000



TABLE RACKS (TR-1)
00444-001 *4-TIER
004444-002 *2-TIER



CORE DISPENSER (CD-1)
004439-008 *3" 35MM
004439-011 *4" 35MM

Date Printed: 5/15/2002

*Price at time of printing.

All prices are subject to change without notice.

All prices are U.S.Dollars, FOB HFC, LA, CA.

Hand and Power Rewinds

REWINDS, HAND		Equipment	*Price
003000-001	RE	Standard Model	\$173.00
003000-002	REF	w/Friction / Drag Control	\$193.00
003000-003	REL	Elbow Brake - Quick Stopping w/ friction	\$260.00
003000-004	(2 to 1)	Hand Rewind (2 to 1) (no friction)	\$275.00

REWIND PARTS & ACCESSORIES		Accessories	Price
003012-001	Replacement	Maintenance Kit for REF; consisting of: (2) Friction Drag Linings, (1) Friction Drag Spring, (1) Friction Drag Ball	\$46.00
003013-000		Friction Drag Lining	\$19.00
003014-000		Friction Drag Spring	\$5.50
003015-000		Friction Drag Adjusting Knob	\$17.00
BA0004-000		Ball 5/16 Chrome Steel	\$4.50
003021-000	RE	Handle Wood Birch (new)	\$15.00
003022-000		Handle Washer	\$1.00
003023-000		Handle Shaft	\$8.95
003024-000		Handle Hex Nut 5/16-18	\$1.25

REWINDS, POWER		Equipment	*Price
000001-000	PR1-A, shaft operating away with either #53 or #54 shaft, and heavy duty foot switch		\$1,550.00
000001-000	PR1-F, same as above, facing operator		\$1,550.00
Model Options:			
000001-001	PR1 with 200v, 50 Hz		\$1,725.00
000001-003	Power Rewind, with revise switch		\$1,700.00

REWINDS, POWER ACCESSORIES		Accessories	*Price
SW0267	Foot pedal switch for Power Rewind		\$369.00

REWINDS, POWER, LOADER for 3M Cartridge Accessories		*Price
004710-001	Microfilm Cartridge loader, Rewind mounted on left side	\$509.00
004710-002	Microfilm Cartridge loader, Rewind mounted on right side	\$509.00
004750-000	Magnetic Hub Assembly (shaft)	\$425.00

REWINDS, ACCESSORY BASES		Accessories	*Price
000142-000	Base Extension for Hand Rewind		\$90.00
000142-001	Base Extension for Power Rewind		\$90.00
000077-000	SB-1 Swivel Bases for Hand Rewind		\$175.00



REWIND w/ FRICTION (REF)
003000-002



REWIND w/ ELBOW BRAKE (REL)
003000-003



POWER REWIND w/ 16/35 TIGHTWIND (PR1)
000001-000
w/001681-002



HEAVY DUTY FOOT CONTROL
SW0267

Date Printed: 5/15/2002

*Price at time of printing.

All prices are subject to change without notice.

All prices are U.S.Dollars, FOB HFC, LA, CA.

Specialty Rewinds and Tightwinds

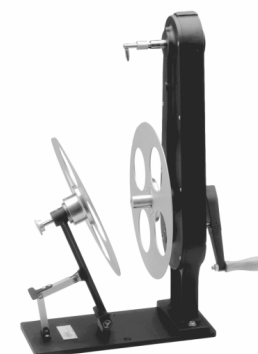
REWINDS, NEGATIVE, KNEE ACTION				Equipment	*Price
000061-001	NRU-2	1000'	8/16/35mm		\$720.00
000061-002	NRU-2L	2000'	8/16/35mm		\$730.00
000061-003	NRUF-2	1000'	8/16/35mm		\$759.00
000061-004	NRUF-2L	2000'	8/16/35 w/Friction Drag		\$769.00
000061-005	NRU-3	3000'	8/16/35mm		\$779.00
000061-006	NRUF-3	3000'	8/16/35 w/Friction Drag		\$818.00
000061-007	NRU-2	1000'	35/65/70		\$770.00
000061-008	NRUF-2	1000'	35/65/70 w/Friction Drag		\$809.00
000061-009	NRU-2L	2000'	35/65/70		\$780.00
000061-010	NRUF-2L	2000'	35/65/70 w/Friction Drag		\$819.00

REWINDS, NEGATIVE BREAKDOWN				Equipment	*Price
001520-000	NBR-1	16/35 breakdown rewind			\$900.00

TIGHTWINDS				Accessories	*Price
001681-001	TW-16-16MM	only			\$329.00
001681-002	TWC-1	16/35/8MM comb.			\$329.00
001681-003	TWC-1	16/35/70MM			\$590.00
001681-004	TWC-1	35/70MM			\$590.00
001681-005	TWC-1	65MM			\$590.00
001681-006	TWC-1	70MM			\$590.00
001681-008	TWC-1	35/65MM			\$590.00
001681-009	TWC-1	105MM			\$1,015.00
001681-010	TWC-1	35/S16MM			\$555.00
000069-000	TWC-2	Elbow tightwind	16/35MM		\$450.00



NEGATIVE REWIND UNIT (NRU)
000061-001



NEGATIVE BREAKDOWN REWIND (NBR-1)
001520-000



TIGHTWIND 16/35 (TWC-1)
(top) 001681-002
(bottom) 001681-001



ELBOW TIGHTWIND (TWC-2)
000069-000
Mounted on (RE) 003000-001

Date Printed: 5/15/2002

*Price at time of printing.

All prices are subject to change without notice.

All prices are U.S.Dollars, FOB HFC, LA, CA.

Shafts, Core Adapters, and Gimmicks

SHAFTS, HAND AND POWER REWINDS Accessories *Price

001463-000	R-8, regular 8MM	\$55.00
001551-000	RS-8, super 8MM	\$55.00
000053-000	R-16, 16MM 1-reel	\$55.00
000054-000	R-1, 35MM 1-reel 1 5/8" Long	\$55.00
000055-000	R-2, 2-reel 16 or 35MI 8 3/8" Long x 5/16" Dia	\$55.00
000056-000	R-3, 3-reel 16 or 35MI 10 1/2" Long x 5/16" Dia	\$55.00
000057-000	R-4, 4-reel 16 or 35MI 12 5/16" Long x 5/16" Dia	\$55.00
001500-000	R-70, 5/16" dia. for 1-70MM reel 3/8"	\$65.00
003239-000	70MM Finger Drive shaft 1/2" (theatrical)	\$160.00
000654-000	R-70, 1/2" for 1-70MM reel	\$88.00
000556-000	ENS-1 end support for #1475 RU shaft	\$53.00
003645-000	ENSH-1 hinged end support	\$85.00
001481-000	105MM shaft 1-reel	\$93.00
000392-000	Spindle shaft (HFC Analyzer)	\$65.00
004330-000	SL-1 Springlock Assy.	\$55.00
001484-000	SP-1 Spacer	\$35.00
000082-000	DG-1 Differential Gimmick	\$235.00

CORES, ALUMINUM,SHAFTS Accessories *Price

000140-000	Aluminum Shaft Core 16MM	\$39.00
000098-000	Aluminum Shaft Core Assy 35MM Round Shaft	\$43.00
000098-001	Aluminum Shaft Core 35MM Square Shaft	\$43.00
000614-001	ASC-70-5/16"	\$109.00
000614-004	ASC-70-1/2"	\$109.00
000614-003	ASC-105 Shaft Core	\$193.00

REWINDS, DIFFERENTIAL Equipment *Price

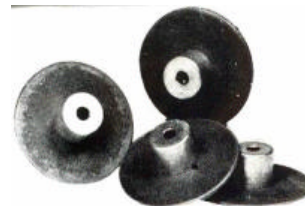
001410-000	DF-31 (1-16MM & 1-35MM Reel)	\$850.00
001521-002	DFG-4 (4 Reels with Gimmick & Spring Lock) (hinged support adapter & Spring Lock)	\$1,450.00

REWINDS, TORQUE MOTOR Accessories *Price

001495-000	TMR-PT1, with powerstat double roller tightwind	\$1,790.00
001496-000	TMRP, same except without tightwind	\$1,200.00
TR0058	Step-down Transformer 220v 50 cycle	\$175.00

LEADER STANCHIONS Accessories *Price

001462-000	LS-1	\$85.00
------------	------	---------



SPACERS (SP)
001484-000



SHAFTS, HAND AND POWER REWIND (R)
VARIETY OF SIZES AVAILABLE



ALUMINIUM SHAFT CORE (ASC)
VARIETY OF SIZES AVAILABLE



SPRING LOCK (SL-1)
004330-000



DIFFERENTIAL GIMMICK (DG-1)
000082-000



DIFFERENTIAL REWIND (DF-31)
001410-000



TORQUE MOTOR REWIND (TMR)
001495-000



LEADER STANCHION (LS-1)
001462-000

Date Printed: 5/15/2002

*Price at time of printing.

All prices are subject to change without notice.

All prices are U.S.Dollars, FOB HFC, LA, CA

Aluminum Split Reels

SPLIT REELS 16MM - HFC - 5/16" Bore - Round Keyway *Price

		<u>CAPACITY DIAMETER</u>		
000002-000	HFC	400'	7"	\$61.00
000003-000	HFC	800'	10 1/2"	\$65.00
000004-000	HFC	1200'	12"	\$83.00
000005-000	HFC	1600'	13 3/4"	\$93.00
000006-000	HFC	2000'	15"	\$109.00
000006-003	HFC	3000'	16 7/8"	\$159.00

SPLIT REELS 35MM - HFC - 5/16" Bore - Round Keyway

000002-003	5/16 SQ	400'	7"	\$60.00
000002-006	HFC	400'	7"	\$60.00
000003-003	HFC	800'	10 1/2"	\$65.00
000012-000	HFC	1000'	11 1/2"	\$82.00
000012-001	5/16 SQ	1000'	11 1/2"	\$82.00
000013-000	HFC	2000'	15"	\$109.00
000013-001	1/2" Theatrical	2000'	15"	\$113.00
000013-004	5/16 SQ	2000'	15"	\$109.00
000014-000	HFC	3000'	16 7/8"	\$160.00
000013-009	HFC	4000'	20 1/2"	\$210.00
000013-003	1/2 Bore	4000'	22"	\$250.00

SPLIT REELS 70MM - HFC - 5/16" Keyway

000002-012	HFC	400'	7"	\$85.00
000014-005	HFC	1000'	11 1/2"	\$123.00
000014-006	HFC	2000'	15"	\$137.00
000014-002	HFC	3000'	16 7/8"	\$165.00

SPLIT REELS 70MM - HFC - 1/2" Keyway

000002-013	HFC	400'	7"	\$100.00
000014-007	HFC	1000'	11 1/2"	\$135.00
000013-002	HFC	2000'	15"	\$155.00
000014-003	HFC	3000'	16 7/8"	\$165.00

SPLIT REELS 65MM - HFC - 5/16" Keyway

000013-006	HFC - RD	2000'	15"	\$155.00
000013-005	HFC - SQ	2000'	15"	\$155.00
000012-002	HFC - RD	1000'	11 1/2"	\$123.00
000012-003	HFC - SQ	1000'	11 1/2"	\$123.00

SPLIT REELS 105MM -HFC - 5/16" Keyway *Price

		<u>CAPACITY DIAMETER</u>		
000002-009	HFC	400'	7"	\$198.00
000899-000	HFC	1000'	11 1/2"	\$210.00

SPLIT REELS, PHOTO FINISHING 6-5/8" DIA.

000892-000	SRA-126	\$65.00
000891-000	SRA-127	\$75.00
000890-000	SRA-120	\$75.00



HFC

Date Printed: 5/15/2002

*Price at time of printing.

All prices are subject to change without notice.

All prices are U.S.Dollars, FOB HFC, LA, CA.

Micarta Flanges

MICARTA FLANGES, SINGLE 5/16" Keyway *Price

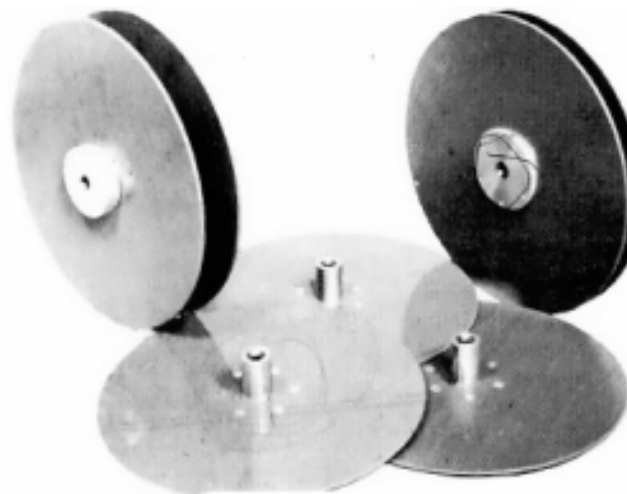
16MM			CAPACITY	DIAMETER	
000015-000	MF-46	SQ	400'	7"	\$115.00
000016-000	MF-86	SQ	800'	10 1/2"	\$115.00
000017-000	MF-126	SQ	1200'	12"	\$160.00
000019-000	MF-206	SQ	2000'	15"	\$173.00
000955-000	MF-306	SQ	3000'	16 7/8"	\$187.00
35MM					
000025-000	MF-43	RD	400'	7"	\$150.00
000026-000	MF-13	5/16 RD	1000'	11 1/2"	\$160.00
000026-001	MF-13	5/16 SQ	1000'	11 1/2"	\$160.00
000027-000	MF-23	RD	2000'	15"	\$189.00
000028-000	MF-33	RD	3000'	16 7/8"	\$225.00
000033-000	SMF-43	Stripping Flange	400'	7"	\$115.00
000034-000	SMF-13	Stripping Flange	1000'	11 1/2"	\$160.00
000035-000	SMF-23	Stripping Flange	2000'	15"	\$175.00
000036-000	SMF-33	Stripping Flange	3000'	16 7/8"	\$190.00

MICARTA FLANGES, COMPANION 5/16" Keyway

16MM					
000020-000	CMF-46	SQ	400'	7 "	\$199.00
000022-000	CMF-126	SQ	1200'	12"	\$219.00
000024-000	CMF-206	SQ	2000'	15"	\$247.00
35MM					
000037-000	CMF-43	RD	400'	7"	\$199.00
000038-000	CMF-13	RD	1000'	11 1/2"	\$219.00
000039-000	CMF-23	RD	2000'	15"	\$247.00
000040-000	CMF-33	RD	3000'	16 7/8"	\$273.00
65/70MM					
000026-002	Flange Micarta	RD	1000'	11 1/4	\$430.00
000027-001	Flange Micarta	RD	2000'	14 1/2	\$515.00

MICARTA FLANGE, FEMALE

000029-000	Flange Female Slot	FMF-43	400'	7"	Special
000030-000	Flange Female Slot	FMF-13	1000'	11 1/2"	Special
000031-000	Flange Female Slot	FMF-23	2000'	15"	Special
000032-000	Flange Female Slot	FMF-33	3000'	16 7/8"	Special



MICARTA FLANGES (MF)

Date Printed: 5/15/2002

*Price at time of printing.

All prices are subject to change without notice.

All prices are U.S.Dollars, FOB HFC, LA, CA.

Film Bins, Vault Cans and Racks, and Angle Iron Racks

BINS		*Price
003002-000	SFB 1 with liner (18 x 24)	\$350.00
003003-000	LFB-1 with liner (22 x 32)	\$405.00
003001-000	FBD-1 with liner (12 x 24 w/double rows of hooks or 4 sets of hooks)	\$350.00
003004-000	FBD-2 with liner (18 x 24 w/double row of hooks or 4 sets of hooks)	\$385.00
003000-000	LFBD-2 with liner (22 x 32 w/double row of hooks)	\$385.00
003009-000	L-1 liner (18 x 24)	\$45.00
003010-000	LL-1 liner (22 x 32)	\$45.00
003006-000	LLD-1 liner (22 x 32) CTR Ties	\$45.00
003007-000	LD-1 liner (12 x 24) CTR Ties	\$45.00
003008-000	LD-2 liner (18 x 24) CTR Ties	\$45.00
003019-000	Bracket for mounting Hand Rewind (on film bin)	\$55.00



SMALL FILM BIN (SFB-1)
003002-000



FILM BIN (FBD-1)
003001-000

RACKS, VAULT CAN		1000' cans	*Price	2000' cans	*Price
VCR - with Ext. Base (add 7" for base extension) 11½" Deep x 81½" High					
004429-002	2-section	25" Wide	\$925.00	004429-008	33" W \$1,150.00
004429-004	3-section	37 ¼" Wide	\$1,025.00	004429-009	49¼" W \$1,250.00
004429-006	4-section	49 ½" Wide	\$1,125.00	004429-010	65½" W \$1,350.00



VAULT RACK (VCR-4)
004429-006



ANGLE IRON RACK
001332-000

VCRF - WITH FLUSH BASE			
004429-001	2-section	25" Wide	\$900.00
004429-003	3-section	37 ¼" Wide	\$1,000.00
004429-005	4-section	49 ½" Wide	\$1,100.00
		Crating Charge	\$150.00

VAULT CANS		*Price
012338-000	VCA-2	11 x 11 x 1½ 1000' RD \$13.50
	412 VCG-2	11 x 11 x 1½ \$14.00
	402 VCG-2000	15 x 15 2000' SQ \$38.00
	403 VCG-4000	21½ x 21½ \$80.00

RACKS, ANGLE IRON		*Price
001339-000	16MM	5-tier \$295.00
001340-000	16MM	6-tier \$295.00
001341-000	16MM	7-tier \$295.00
001332-000	35MM	5-tier \$295.00
001333-000	35MM	6-tier \$295.00
001334-000	35MM	7-tier \$295.00



VAULT CANS(VCA-2, VCG-2)
012338-000
012338-412

(Special Racks-Prices on Request)

Date Printed: 5/15/2002

*Price at time of printing.

All prices are subject to change without notice.

All prices are U.S.Dollars, FOB HFC, LA, CA.

Cases, Cores, and Reels

CASES, METAL SHIPPING

					*Price
012346-001	2-reel	HFC	35MM	2000'	\$21.00
012346-002	3-reel	HFC	35MM	2000'	\$23.00
012346-003	4-reel	HFC	35MM	2000'	\$25.00

CASES, PLASTIC SHIPPING

					*Price
000492-000	2-reel		35MM	2000'	\$23.00
000493-000	3-reel		35MM	2000'	\$26.00
000494-000	4-reel		35MM	2000'	\$30.00

CORES, PLASTIC

						*Price
				Less than a carton	10000& up	
005071-000	16MM	2"		1000/Case	\$0.85	\$0.43
005073-000	16MM	3"		560/Case	\$0.90	\$0.45
005072-000	16MM	4"		300/Case	\$0.95	\$0.48
005080-000	35MM	1"		2000/Case	\$0.55	\$0.28
005081-000	35MM	2"		400/Case	\$0.60	\$0.30
005083-000	35MM	3"		200/Case	\$0.65	\$0.33
005084-000	35MM	4"		110/Case	\$0.70	\$0.35
005075-000	35MM	5"		198/Case	\$1.90	\$0.95

REELS, PLASTIC.35MM

					Price
000176-000	Plastic	35MM	2000'		\$5.25
023946-000	Plastic - Split		2000'		\$5.00
023946-001	Plastic - Split	2000'	with 4" core		\$5.25
Quantity Discounts Available					

METAL REELS, 35MM

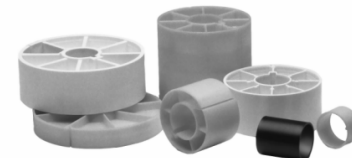
					*Price
000173-000	Steel	35MM	1000'		\$8.95
005106-000	Aluminum	11 1/2"	with 5" Hub		\$49.00
000187-000	Aluminum	12 1/4"	with 5" Hub		\$55.00
005100-000	Aluminum	16 7/8"	with 5" Hub		\$113.00

REELS, 70MM

					*Price
000197-000	22" S.A.	70MM reel with 8" core and 1/2" hub			\$190.00
000198-000	22"	70MM case			\$190.00
"SPECIAL" 22" sold as a set = reel and case					\$380.00
000013-018	25" S.A.	70MM reel with 7" core and 1/2" hub			\$330.00
000013-019	27" S.A.	70MM reel with 5" core and 1/2" hub			\$365.00
005109-000	29" S.A.	70MM reel with 5" core and 1/2" hub			\$397.00



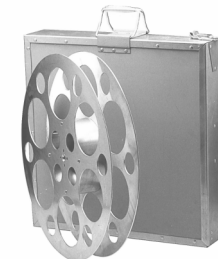
HEAVY DUTY METAL & PLASTIC SHIPPING CASES



PLASTIC CORES TO SMPTE STANDARDS



HIGH IMPACT PLASTIC REELS



ALUMINUM 70MM REEL & CASES
000197-000 AND 000198-000
22" REEL AND CASE SET "SPECIAL"

Date Printed: 5/15/2002

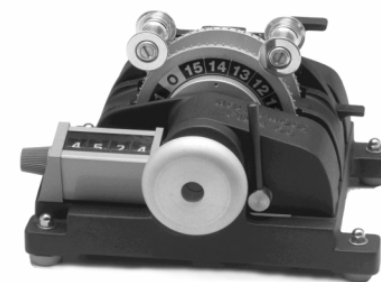
*Price at time of printing.

All prices are subject to change without notice.

All prices are U.S.Dollars, FOB HFC, LA, CA.

Film Synchronizers

	Standard Foot Counter: #002377-000	High Speed Frame Counter #003213-000 =\$1103.00 (assy.)	
16mm	w/ Standard Foot Counter	w/ High Speed Frame Counter	
1 way	002183-001 =\$850.00		
2 way	002200-000 =\$920.00		
3 way	001510-000 =\$1030.00	002201-001 =\$2150.00	
4 way	002202.000 =\$1350.00		
35mm	w/ Standard Foot Counter	w/ High Speed Frame Counter	With Disconnect add: \$1057.00
1 way	002430-000 =\$850.00	002430-001 =\$1970.00	
w/ 3 perf	002430-002 =\$1255.00		
w/encoder	003830-002 =\$3811.00		
2 way	002205-000 =\$920.00	002162-000 =\$2040.00	002157-002 =\$4250.00
w/ 3 perf	002205-001 =\$1400.00		
w/ encoder	003830-003 =\$4150.00		
3/ way	002206-000 =\$1030.00	002206-002 =\$2150.00	
w/ 3 perf			
w/ encoder	003830-006 =\$4450.00		
4/ way	002207-000 =\$1350.00	002156-000 =\$2470.00	
w/ 3 perf			
w/ encoder	003830-007 =\$4750.00		
5/ way	002208-000 =\$1235.00		
65mm	w/ Standard Foot Counter		
2/ way	002194-000 =\$2350.00 theatrical		
70mm	w/ Standard Foot Counter	w/ High Speed Frame Counter	
1/way;5 perf	002143--000 =\$2350.00 theatrical		
w/ 8 perf		002925-001 =\$4020.00	
w/ 15 perf			
2/ way;5 perf		002925-000 =\$4420.00	
2/way;15 perf			
3/ way;5 perf	002195-000 =\$3150.00		



PRECISION

*** ANY COMBINATION CAN BE MADE
TO YOUR SPECIFICATIONS***

Date Printed: 5/15/2002

*Price at time of printing.

All prices are subject to change without notice.

All prices are U.S.Dollars, FOB HFC, LA, CA

* Combination Synchronizers *

old #	new #	Front Sprockets	Rear Sprockets	With Disconnect (GT)		Standard Counter (included)	High Speed Frame Counter	High Speed Foot/Frame Counter	Price
16MM FRONT SPROCKETTS				\$1,057.00		\$190.00	\$1,103.00	\$1,160.00	
35MM REAR SPROCKETTS									
2700-000	1548-000	1-16mm	1-35mm	~	~	front	~	~	\$2,150.00
3830-000		1-16mm	1-35mm	~	w/ Encoder	none	~	~	\$4,150.00
1550-000		1-16mm	2-35mm	~	~	front	~	~	\$2,210.00
1554-000		2-16mm	1-35mm	~	~	front	~	~	\$2,210.00
1555-000		2-16mm	2-35mm	~	~	front	~	~	\$2,270.00
	2140-001	2-16mm GT	4-35mm	w/Disconnect	~	front	~	~	ON REQUEST
35MM FRONT SPROCKETTS									
16MM REAR SPROCKETTS									
2700-001	1549-000	1-35mm	1-16mm	~	~	front	~	~	\$2,150.00
2155-001		1-35mm GT	1-16mm	w/Disconnect	~	~	front	~	\$3,295.00
1557-000	2197-000	2-35mm	2-16mm	w/Disconnect	2 counters	front & rear	~	~	\$2,270.00
2197-001		2-35mm	2-16mm	w/Disconnect	~	~	~	front	\$4,470.00
2165-000		3-35mm GT	2-16mm	w/Disconnect	~	front	~	~	ON REQUEST
	2140-000	4-35mm GT	2-16mm	w/Disconnect	~	front	~	~	ON REQUEST
65MM REAR SPROCKETTS									
2193-001		1-35mm	1-65mm	~	~	front	~	~	ON REQUEST
65/70MM REAR SPROCKETTS									
2955-000		1-35mm	2-65/70mm 15perf	~	w/ Extended Shaft	front	~	~	\$3,500.00
2955-001		1-35mm	2-65/70mm 8perf	~	w/ Extended Shaft	front	~	~	\$4,995.00
70MM REAR SPROCKETTS									
2193-003		1-35mm	1-70mm std. 5perf	~	~	front	~	~	\$2,010.00
35/32MM FRONT SPROCKETTS									
35MM REAR SPROCKETTS									
2157-000		1-35/32mm	1-35mm	~	~	front	~	~	ON REQUEST
65MM FRONT SPROCKETTS									
35MM REAR SPROCKETTS									
2193-000		1-65mm	1-35mm	~	~	front	~	~	ON REQUEST
2192-000		1-65mm	2-35mm	~	~	front	~	~	ON REQUEST
70MM FRONT SPROCKETTS									
35MM REAR SPROCKETTS									
2193-002		1-70mm std. 5perf	1-35mm	~	~	front	~	~	\$2,500.00
2950-001		1-70mm 15prf GT	1-35mm	w/Disconnect	~	front	~	~	\$5,500.00
2962-000		2-70mm std. 5perf	1-35mm	~	~	front	~	~	\$2,800.00
2955-002		2-70mm 15perf	1-35mm	~	~	~	front	~	\$4,995.00
2950-000		2-70mm 15prf GT	1-35mm	w/Disconnect	~	~	~	front	\$5,500.00

Date Printed: 5/15/2002

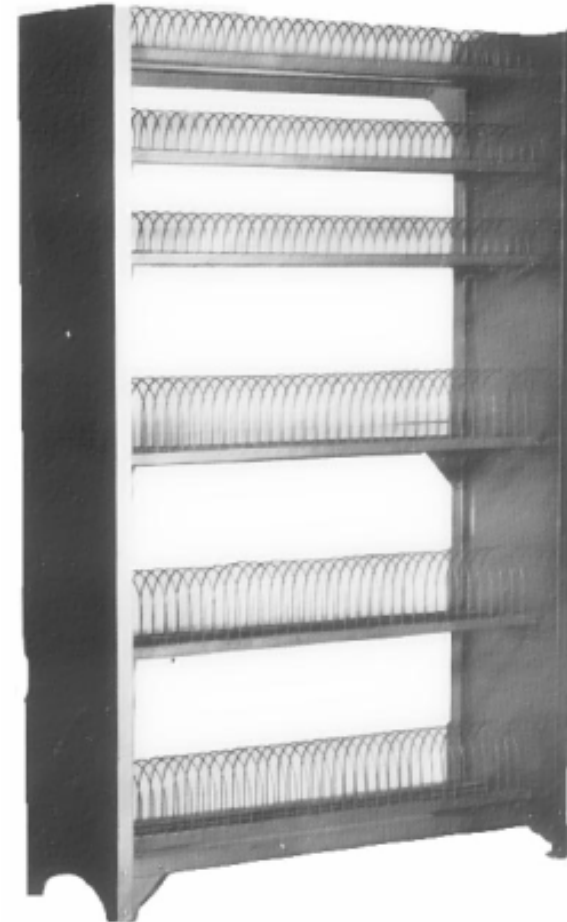
*Price at time of printing.

All prices are subject to change without notice.

All prices are U.S.Dollars, FOB HFC, LA, CA.

Film Racks (and Separators)

RACKS WITH SEPARATORS		*Price
001320-000	RA-343L Holds 400' 16mm reels or cans on top three tiers and 600' thru 2000' 16mm reels or cans on the bottom three tiers.	\$870.00
003892-000	RA-5L Holds 180 16mm reels from 600' thru 2000' on five tiers.	\$900.00
001322-000	RA-74 Crating Charge for all assembled racks	\$930.00 \$150.00
SEPARATORS ONLY, 3 FT. LENGTH		*Price
002526-000	RS-4-36 400' x 16MM	\$135.00
002956-001	RSL-36 1200' - 2000' x 16MM	\$135.00
002956-002	RS-435-36 400' x 35MM	\$135.00
002956-003	RSL-35-36 1000' - 2000' x 35MM	\$135.00
SEPARATORS ONLY, 4 FT. LENGTH		*Price
002957-000	RS-4-48	\$170.00
002957-001	RSL-48	\$170.00
002597-002	RS-435-48	\$170.00
002957-003	RSL-35-48	\$170.00



Rack with separators
001320-000

Date Printed: 5/15/2002

*Price at time of printing.

All prices are subject to change without notice.

All prices are U.S.Dollars, FOB HFC, LA, CA.

"HFC 2K" Ultrasonic Splicer

HFC "2K" ULTRASONIC SPLICER, 16MM, 35MM	Equipment	*Price
023202-000	Splicer Ultrasonic Assembly (w/o pin registered plate)	\$2,850.00
023239-001	Bed Assembly 35MM Positive	\$650.00
023239-002	Bed Film 35MM Negative (.1870)	\$650.00
023239-003	Bed Film 35MM Negative (.1866)	\$650.00
023239-004	Bed Film 35/32, 16MM Positive (.3000 pitch)	\$650.00
023239-005	Bed Film 35/32, 16MM Negative (.2994 pitch)	\$650.00
023255-000	Optional Dog Ear Trimmer (installed at delivery)	\$105.00



THE "HFC 2K" ULTRASONIC SPLICER

023202-000 SPLICER ASSEMBLY

023239-001 35MM POSITIVE FILM BED

023255-000 DOG EAR TRIMMER (FACTORY INSTALLED)

Date Printed: 5/15/2002

*Price at time of printing.

All prices are subject to change without notice.

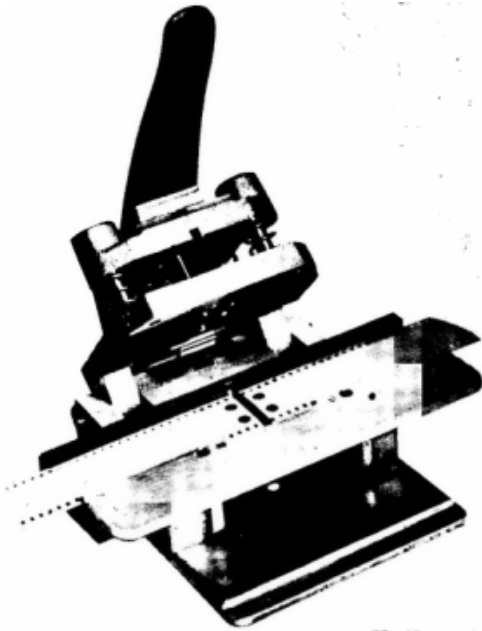
All prices are U.S.Dollars, FOB HFC, LA, CA

Splicer (Unicorn)

HFC SPLICER, UNICORN		Equipment	*Price
002816-000	A-2816, 16MM - 60Hz		\$7,769.00
002816-001	A-2816, 16MM - 50Hz		\$7,990.00
002835-000	A-2835, 35MM - 60Hz		\$7,769.00
002835-001	A-2835, 35MM - 50Hz		\$7,990.00

HFC SPLICING CUTTER		Equipment	*Price
003100-001	PSC-16 Pre-splice cutter - 16MM		\$1,750.00
003100-002	PSC-35 Pre-splice cutter - 35MM		\$1,750.00
003100-000	PSC-16/35 Pre-splice cutter - 16/35MM		\$1,775.00

TAPE FOR UNICORN SPLICERS		Parts				
002033-000	Tape 1/2"	1-71 rolls	19.50 ea.	72 - up rolls	17.90 ea.	3M 8421
002034-000	Tape 1/2"	Unicorn		1 - 71 rolls	16.00 ea.	
002035-000	Tape 1"	1-71 rolls	31.00 ea.	72 - up rolls	28.00 ea.	3M 8421 mylar



PRE-SPLICE CUTTER
003100-002



002835-000

Date Printed: 5/15/2002

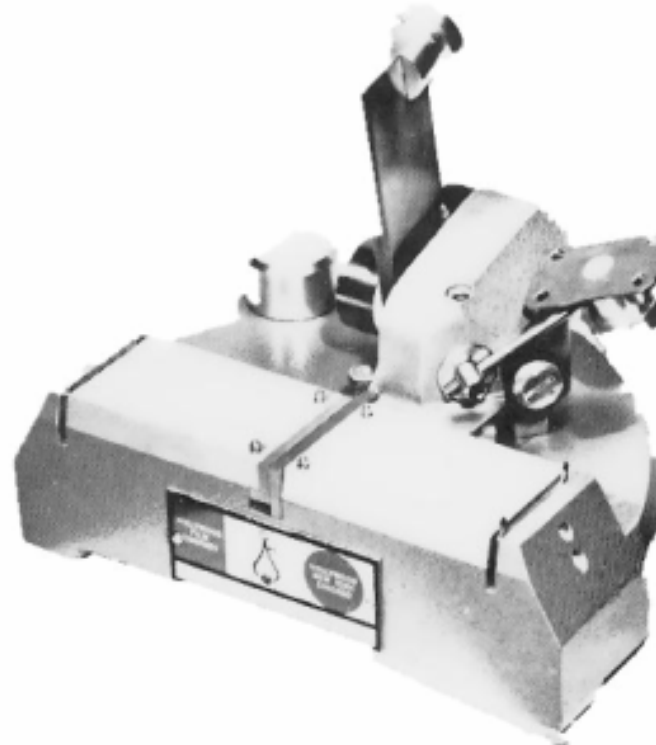
*Price at time of printing.

All prices are subject to change without notice.

All prices are U.S.Dollars, FOB HFC, LA, CA

Tape Splicer (HFC), and Tape for HFC Splicer

HFC TAPE SPLICER		Equipment	*Price
001505-002	TS-1, 35MM Straight Cut		\$459.00
TAPE, FOR SPLICERS		Parts	
		1 - 5 rolls	14.95 ea.
002020-000	Perf Tape 16MM Transparent #305	12 - up rolls	12.75 ea.
		1 - 5 rolls	13.00 ea.
002021-000	Perf Tape 16MM White Mag. #309	12 -up rolls	10.15 ea.
		1 - 5 rolls	23.95 ea.
002023-000	Perf Tape 35MM Transparent #309	12 - up rolls	19.55 ea.
		1 - 5 rolls	23.95 ea.
002024-000	Perf Tape 35MM White Mag. #309	12 - up rolls	19.55 ea.



TAPE SPLICER
001505-002

Date Printed: 5/15/2002

*Prices at time of printing.

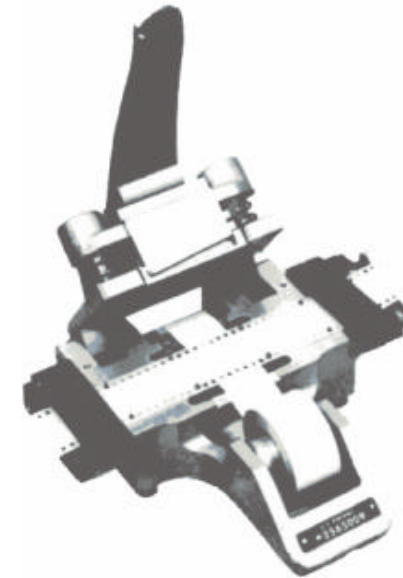
All prices are subject to change without notice.

All prices are U.S.Dollars, FOB HFC, LA, CA

Guillotine Splicer, Repair Tape Splicer, and Tape for Repair Splicer

HFC, REPAIR TAPE SPLICER (GUILLOTINE)	Equipment	*Price
001853-000	16MM Straight Cut	\$709.00
001856-000	35MM Straight Cut - Positive	\$770.00
001855-000	35MM Straight Cut - Negative	\$845.00
001855-002	35MM Pos. Inc 44/B, 8 perf/2 frame special	\$1,605.00
001862-000	70MM Motion Picture	\$1,640.00

TAPE FOR REPAIR SPLICER				Parts
002227-000	Tape 3/8"	Transp.	Per Roll	5.00 ea.
002228-000	Tape 5/8"	Transp.	Per Roll	6.00 ea.
002230-000	Tape 5/8"	White	Per Roll	7.00 ea.
002231-000	Tape 3/4"	Transp.	Per Roll	6.75 ea.
002233-000	Tape 3/4"	White	Per Roll	6.75 ea.
002234-000	Tape 1"	Transp. 35MM	Per Roll	9.00 ea.
002236-000	Tape 1 1/2"	Transp.	Per Roll	11.95 ea.



REPAIR SPLICER (CIR-35P)

001856-000

Date Printed: 5/15/2002

*Price at time of printing.

All prices are subject to change without notice.

All prices are U.S.Dollars, FOB HFC, LA, CA

HFC Hot Splicer and Accessories

HFC HOT SPLICERS		Equipment	*Price
000072-000	FS816, 16MM Splicer, Domestic		\$3,440.00
000072-001	FS816, 220v 50Hz		\$3,520.00
000073-000	FSC-1, 16/35, 35/32 Comb. Domestic		\$3,440.00
000073-001	FSC-1, 220v 50Hz		\$3,520.00
001525-000	FSC-1A, 16MM/35MM for A&B, Domestic		\$3,440.00
001525-001	FSC-1A, 220v 50Hz		\$3,520.00
Special	65/70MM Splicers, Special Order Only (call for further information)		\$3,520.00
For Hot Splicers		Parts	
000313-000	Bottle Stopper Assy.		\$22.00
000326-000	Cement Bottle		\$3.75
000496-000	Adapter for new cement bottle		\$7.50
000198-000	Scraper blades, no radius		\$1.75
000198-001	Scraper blades, with radius		\$1.95



16/35 A & B HOT SPLICER TABLE MODEL (FSC-1)

001525-000

Date Printed: 5/15/2002

*Price at time of printing.

All prices are subject to change without notice.

All prices are U.S.Dollars, FOB HFC, LA, CA

MPST Densitometer

MPST Microprocessor-enhanced Transmission Densitometer.....\$5,900.00

Equipped with Status A and M response filters and 2 Wratten visual filters. Complete with removable apertures, 25mm film guide with 8/16mm adapter bar, spare lamp and calibration tablet. Front panel push buttons and "magic" key control all functions including automatic filter selection and rotation; sequenced computation of color error and color balance against master aim point density values stored in memory; computation of film gamma; scan for maximum, minimum density and display of difference; null; expanded density to three places beyond decimal point; data entry master aim point densities into multiple memory locations RS232 included for interface of most hard copy printers or computers. Also includes S-9 infrared filter and special .012" x .170" (0.3mm x 4.0mm) slit aperture for reading density of sound track.

DENSITOMETER ACCESSORIES AND SPARE PARTS

300126-2 3mm aperture.....**\$72.00**

300126-3 2mm aperture.....**\$88.00**

300126-4 1mm aperture.....**\$105.00**

ST0014 Calibrated transmission step tablet.....**\$55.00**

900016-1 Transmission lamp (TL-5).....**\$53.00**
(all units except QC, BW-2)

AUTOMATIC FILM TRANSPORT..... \$1,525.00

Accessory for Brumagic MP or MPST that automatically advances standard 21 step control wedge to next position for reading densities. Can be used with 35mm or 16mm film .



HFC Sensitometer Model 7000

FEATURES



- * TABLE TOP UNIT.
- * REPLACEABLE CARBON DEPOSITION WEDGE.
- * FILM NOTCHING FOR EASY DETECTION AND SEPARATION
- * UNIT AUTOMATICALLY STOPS WHEN DESIRED NUMBER OF STRIPS HAVE BEEN MADE.
- * FIVE AUXILIARY FILTER SLOTS PROVIDED.
- * INTERLOCKED TO ENSURE PROPER FILM THREADING AND TO STOP UNIT IN CASE OF FILM BREAK.
- * DIGITAL DISPLAY FOR READING LAMP VOLTAGE OR CURRENT.
- * CONTINUOUS GRAY AND 21- STEP WEDGE.

The HFC Model 7000 sensitometer provides the capability of producing high precision sensitometric film strips at speeds up to 30 pairs/minute. The table-top unit may print any film format, 16mm to 35mm, perforated or unperforated. The unit provides the feature of producing two calibrated wedges, a continuous gray wedge and a .21-step wedge, sequentially copied onto print stock each revolution of the print drum.

SPECIFICATIONS

SPEED:	LAMP COLOR TEMP.:	SIZE:
100 FEET/MIN.	AT 120 VOLTS - 3200K	APPROX. 40"Wx19"Dx17"H
FILM CAPACITY:	AT 100 VOLTS - 3000K	WEIGHT:
2000 FEET	LAMP POWER SUPPLY:	APPROX. 150LBS.
STRIP LENGTH:	120 VOLTS D.C. MAX.- ADJUSTABLE +/-0.1%	POWER REQUIREMENTS:
40.3 INCHES	EXPOSURE PERIOD VARIATION:	120 VAC, 60Hz (50 Hz OPTIONAL) 15 AMPS
LAMP TYPE:	LESS THAN 0.1%	CONTROLS:
TUNGSTEN-HALOGEN	EXPOSURE TIMES:	POWER SWITCH; ON/OFF
LAMP LIFE:	1/20 SEC. AT 60hz	MOTOR SWITCH; ON/OFF
APPROX. 700 HRS.	FILM FORMATS:	CURRENT/VOLTAGE SELECTOR SWITCH
LAMP OUTPUT:	35MM,(.866 & .1870 PITCH)	VOLTAGE ADJUSTMENT
20,000 LUMENS AT 120 VOLTS	35/32MM, 1-4(.2996 & .3000 PITCH)	LAMP SWITCH; ON/OFF

Date Printed: 5/15/2002

*Price at time of printing.

All prices are subject to change without notice.

All prices are U.S.Dollars, FOB HFC, LA, CA



Film Services Division

Film Rejuvenation

Hollywood Film Company has over 25 years experience in rejuvenating motion picture film for the major studios.

After inspecting, grading, conforming, and repairing any damaged frames, your film is cleaned and the deepest of scratches removed in our environmentally friendly process.

For quality assurance each reel is screened using high-speed projection, then packaged and sealed for safe shipment to any foreign or domestic territory.

Distribution

- * North American distributor of Agfa motion picture and sound film.
- * All fulfillment services.
- * International shipping.

Film Storage

A highly secured, monitored, and climate-controlled atmosphere is the best protection for your film, and that is what we provide.

Each element in our care is registered in a protected database inventory control system with Internet access, assuring data retrieval at all times.

Our own vehicles can easily pick-up and deliver promptly and professionally.

Other Services

- * Trailer breakdown.
- * Mounting and packaging prints.

Hollywood Film Company - Film Services Division

10909 Tuxford Street,

Sun Valley, California 91352

Phone : (818)252-6777 Fax : (818)252-6770

E-Mail : Rejuv@HollywoodFilmCo.com