

Software™  
**OnDemand**

**7.5**

Version 7.5

*The WinINSTALL Company*



[www.ondemandsoftware.com](http://www.ondemandsoftware.com)

**WinINSTALL**  
 is the longest con-  
 tinuously devel-  
 oped Application  
 Availability solu-  
 tion for Microsoft  
 Windows today.

Application  
 availability is the  
 process of quan-  
 tification, staging,  
 installation,  
 maintenance and  
 restoration of  
 software applica-  
 tions on computer  
 systems.



**WinINSTALL** brings to the table an award-winning software packager and a proven infra-structure for *managed* software deployment. **WinINSTALL** is an industry leading Windows Installer (MSI) packaging tool which offers wizard driven MSI package creation functions and simplified MSI editing- *"We take care of the complex stuff so you don't have to."*

*"WinINSTALL is more than just packaging that addresses the software distribution problem."*  
 A share based application deployment infrastructure means each network distribution point in the network can reside on a file server with little or no server processing load. **WinINSTALL's** effective management system is the product of 11 years of evolution in the enterprise software distribution field.

**WHAT'S NEW:**

**Enhanced Microsoft® Windows® Installer Support and Transparency ("MSI for any level of knowledge"):** Expanded MSI packaging and installation capabilities, simplified to make the process transparent for the user.

**Support for Transforms and Patches:** Along with the .msi and .msm package formats, support for .mst and .msp packages is now included.

**Check Point Restart:** Optimizes inter-net distribution for the remote user.

**Private "Boot Sector":** Eliminates the need in operating system installation and system reset scenarios.

**Load Set CD Creation Wizard:** Makes creating distribution CDs simple enough for even non-technicians.

**PRODUCT HIGHLIGHTS:**

**Zero-Client Footprint:** No client soft-ware necessary, kicking off installations is as simple as a single command line.

**Comprehensive Installation Options:** Including push, scheduled push, win-dow and web based menu's, install at login, Windows service, e-mail, CD and the **WinINSTALL** Program Launcher.

**Built-in Replication:** Allows easy fan out of packages to distribution points across the network.

**Flexible Notification and Reporting:** Including SNMP traps, SMTP mail, text and system logs and ODBC Database option. Crystal Reports® provides canned and customized reporting.

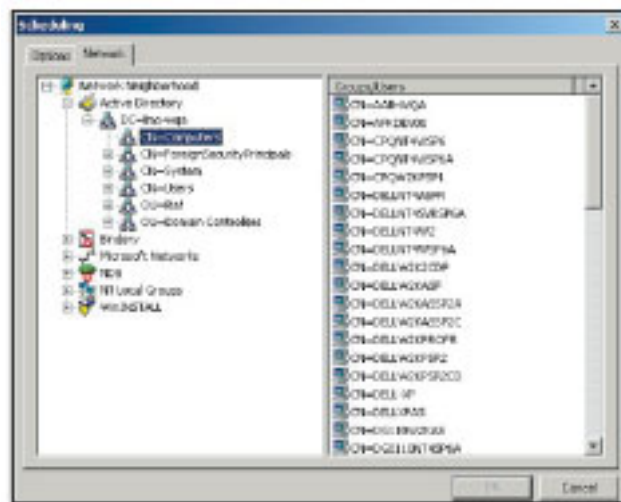
**Ultimate Scalability:** Perfect for a net-work of one hundred PC's to an enter-prise with tens of thousands of PC's.

**PACKAGING:**

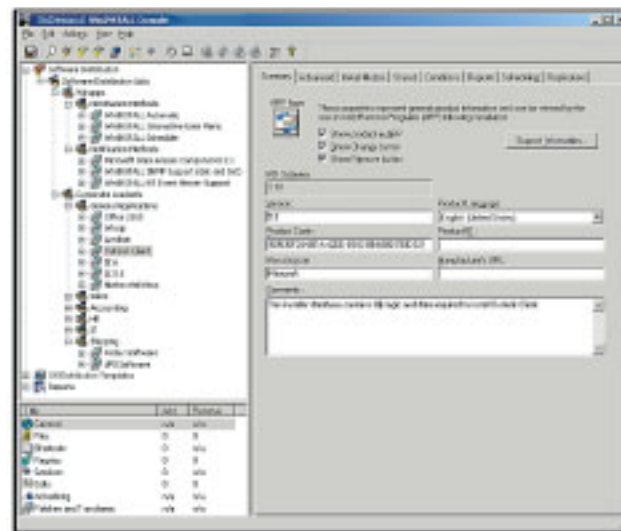
- ◆ **Award-wining packager supports dual formats:** Microsoft Windows Installer (.MSI) as well as **WinINSTALL's** own .NAI files.

**KEY BENEFITS:**

- ◆ **Simple** - Quick learning curve and integration
- ◆ **Reliable** - High success ratio and sustained function.
- ◆ **Flexible** - Fits into any network configuration.



Active Directory integration makes distribution easy.



Hierarchical package management enables flexible organization of an unlimited number of installation packages.

- ◆ Simple snap-shot method of package creation.
- ◆ Leading MSI packager; supports Microsoft Installer patches (.msp's) Transforms (.mst's) and Merge Modules (.msm's) in addition to standard .msi files.
- ◆ Supports MSI custom actions.
- ◆ Supports digital signatures.
- ◆ No scripting required but available if needed.

### **DISTRIBUTION:**

- ◆ **WinINSTALL** uses a share based architecture enabling simple integration of a stable, enterprise-wide software deployment framework.
- ◆ Each share operates independently so there are no limits to scalability.
- ◆ A **WinINSTALL** share can quickly and easily be placed on a CD for non-networked targets or targets with prohibitively slow bandwidth. Loadset Creation CD wizard included.
- ◆ Global policies can be set and applied centrally.
- ◆ Checkpoint restart optimizes Internet distribution by intelligently copying all necessary files to the local hard drive before beginning installation.

### **REPLICATION:**

- ◆ **WinINSTALL** replication provides simple, easy automatic staging of applications across multiple servers.
- ◆ Built in error-checking catches potential problems before packages are synchronized to distribution points.

### **TARGETING:**

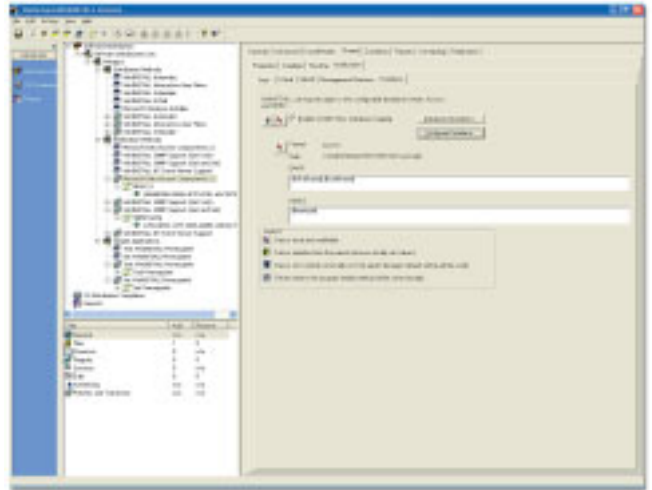
- ◆ Database, network users and groups, and e-mail lists may be used to select systems prior to initiating deployment.
- ◆ Runtime targeting provides up-to-the minute accuracy: Active Directory and NDS objects, NT Groups and Novell Bindery may be used to select systems. "Ground level" policies allow installation based on current system conditions (Hardware, Software, and OS attributes as well as environment variables and registry keys.)

### **INSTALLATION:**

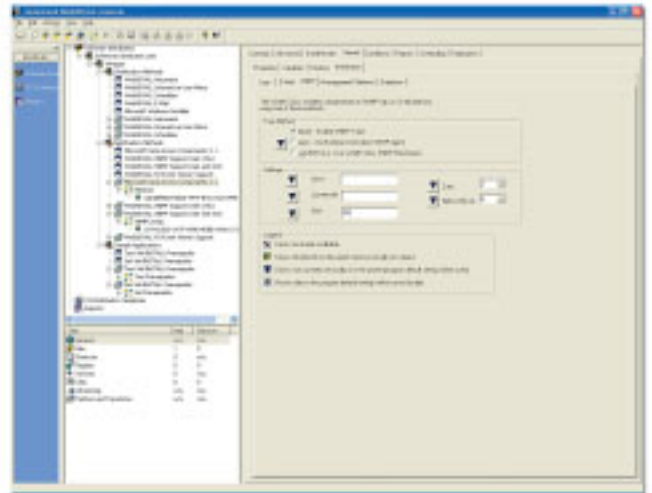
- ◆ **WinINSTALL** supports several methods of Push installation:
  - At system startup (login script, Windows startup, Windows Service startup.)
  - Via Schedule
  - By System Administrator on-demand (via the **WinINSTALL** Windows Service)
- ◆ **WinINSTALL** supports several methods of Pull installation:
  - User menu (Windows and Web)
  - E-mail link or attachment
  - Desktop Icon
  - Autorun (for CD-based installation)
- ◆ Group Policy Emulation means enterprise distribution can be as easy as adding or removing an object from a directory group.
- ◆ Automatic "Rollback" for failed installations leaves the machine as it was prior to the installation attempt.
- ◆ Seamless uninstall for upgrades or mass rollbacks.

### **THE WinINSTALL INSTALLERS:**

- ◆ **WinINSTALL** has a "0 Client" footprint. This means all of the files necessary to conduct an installation reside on the share and are only run in memory on the local machine. This makes **WinINSTALL** easy and safe to integrate.



Built-in replication allows for automatic fan-out across the WAN.



Seamless registry editing

- ◆ The **WinINSTALL** Windows Service Installer is used to leverage elevated privileges and distribute software to unattended machines.
- ◆ **WinINSTALL** Installers use API's to manage the native MSI installers for MSI package installation.
- ◆ The **WinINSTALL** Program Launcher (WiPL) allows the publishing of desktop icons and installation on first execution. WiPL provides version control by checking for updates at each subsequent execution and basic "self healing" application restore capabilities.

INSTALLATION

PACKAGING

**WORKSTATION AVAILABILITY:**

- ◆ **WinINSTALL** provides the automatic re-installation of entire application load sets when a machine is re-built.
- ◆ Private "Boot Sector" eliminates the need for boot media in operating system and system reset scenarios.
- ◆ Comprehensive OS layer options including support of 3rd party OS staging tools and procedures.

DISTRIBUTION

REPLICATION

**NOTIFICATION:**

**REPORTING:**

- |                     |  |
|---------------------|--|
| ◆ ODBC Database     | ◆ <b>WinINSTALL</b> uses Crystal Reports |
| ◆ SNMP Trap         | ◆ Basic, canned reports included         |
| ◆ SMTP Mail         | ◆ Unlimited reports possible             |
| ◆ Windows event log |  |
| ◆ Text file Log     |  |

TARGETING

REPORTING

*"Keep it simple" has always been a primary axiom of computer programming and the key factor in WinINSTALLs long term success. The greater the degree of complexity the higher the inherent risk of failure: by reducing complexity at every step, using WinINSTALLs results in lower instance of error and higher rates of success. WinINSTALLs basic architecture also means it can be widely customized to meet the unique needs and requirements of almost every enterprise.*

INSTALLATION

PACKAGING

**FEATURES/BENEFITS**

**SIMPLICITY:**

**Ease-of-Use**

- ◆ The perfect tool for System Administrators with broad responsibilities.
- ◆ No scripting is required, so even non-programmers can use.
- ◆ Does not require specialized technicians.

DISTRIBUTION

**Low learning curve**

- ◆ Technicians up to speed faster.
- ◆ No lengthy training necessary.

REPLICATION

**Built-In Wizards**

- ◆ Facilitates successful use by even non-experts.

TARGETING

**Quick Integration**

- ◆ Helps meet project deadlines.
- ◆ Starts delivering ROI immediately.

REPORTING

**Minimal Hardware**

- ◆ Requires no dedicated servers.
- ◆ Requires no upgrades to existing network infrastructure.

INSTALLATION

**RELIABILITY:**

**Easy Integration**

- ◆ Up and running without protracted troubleshooting.

PACKAGING

### **Stable Infrastructure**

- ◆ Low impact on your servers and network.
- ◆ Doesn't break down.
- ◆ Won't drain IT resources.

### **Share-based Architecture**

- ◆ Distribution points are simple file shares-**WinINSTALL** won't crash servers!
- ◆ Each distribution point is independent-WAN issues won't breakdown local application availability infrastructure.

### **Zero-Client Footprint**

- ◆ No installer files required on the local hard drive, **WinINSTALL** won't disable or disrupt user workstations.

### **High Success Rate**

- ◆ Up to 99% success on initial deployments when used properly.
- ◆ Decreased total cost of ownership realized within helpdesk operations!

### **FLEXIBILITY:**

#### **Fits into most environments**

- ◆ Won't require changes to your network infrastructure.

#### **Scalability**

- ◆ The non-processing architecture means there are no limits on how many servers can participate in a deployment framework.

#### **Distributed Architecture**

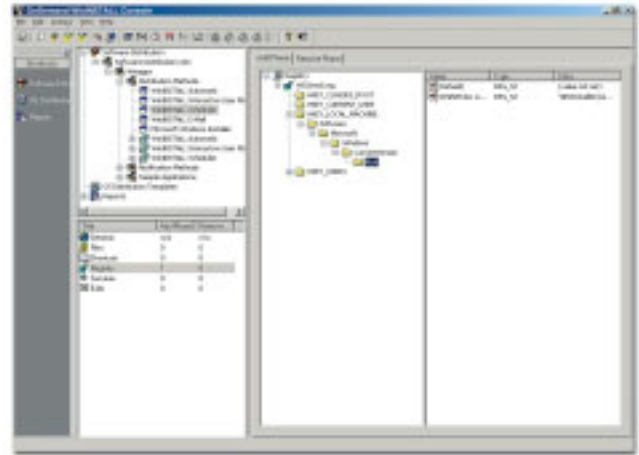
- ◆ Decentralized architecture.
- ◆ Local tasks are not dependent on connection to a central control process.

#### **Comprehensive Installation Options**

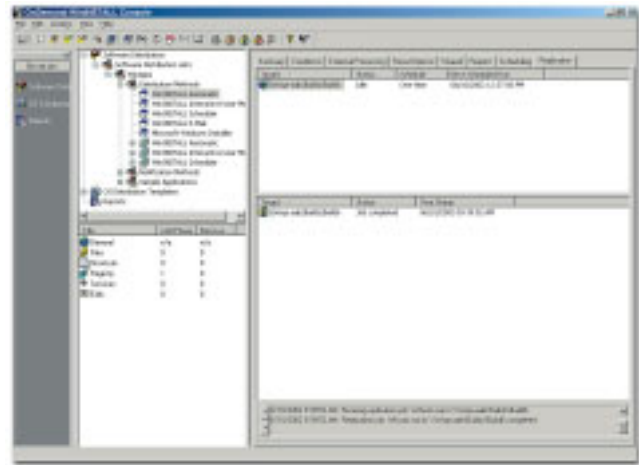
- ◆ Can meet all installation needs.
- ◆ Allows all deployment scenarios.
- ◆ Supports networked, internet and non-networked workstations.

#### **Supports 3rd Party OS Staging**

- ◆ In-place OS installation processes can easily be integrated into the OnDemand workstation availability architecture.



Robust messaging includes simple network management protocol traps.



Installation status tracking done via ODBC database

*"By automating the broad range of tasks involved in deployment and management of software, we've been getting IT professionals home for dinner for over 10 years."*

*-Mel Raff,  
WinINSTALL Creator, Father of Three*



**Corporate Headquarters**

***OnDemand Software***

9148 Bonita Beach Road, Suite 210

Bonita Springs, FL 34135 USA

Toll Free: (866) 495-0541

Fax: (239) 498-7344

***OnDemand Software***  
860 Oak Park Blvd., Suite 203  
Arroyo Grande, CA 93420 USA

***OnDemand Software***  
6930 Carroll Avenue, Suite 400  
Takoma Park, MD 20912 USA