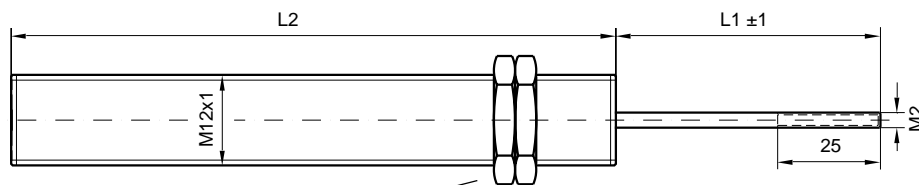


Technical Data:

- Measuring strokes 5, 10 or 15 mm
- Housing with M12 mounting thread
- Linearity 0,5 or 0,25 %
- Excitation and signal processing by external electronic modules
- Protection grade to IP 66
- Further technical data as per data sheet IW 10278 (model IW101)

Dimensions in mm

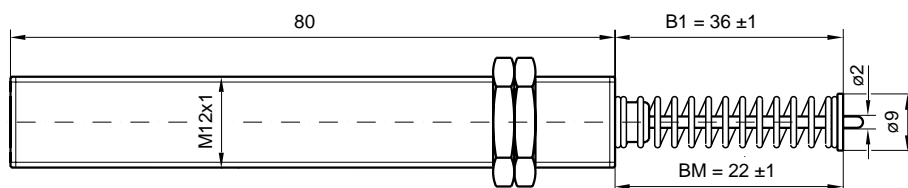
IWM 12/ ... (Standard version, plunger without guidance)



Screws 17 mm across flat
Housing and screws: brass; nickel plated

IWM12 Stroke mm	L1 mm	L2 mm	Mass g
5	35	70	35
10	35	70	35
15	35	80	40

L1 = Plunger in central position

IWM 12 ... T (Gauge)


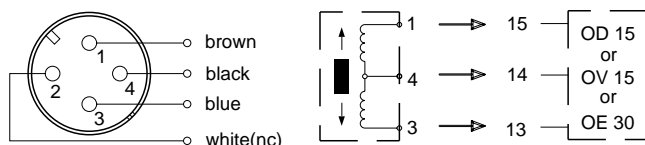
BM = Plunger in central position, B1 = Plunger full out

IWM12...T Stroke in mm	Pre-travel mm	Over-travel mm	Mass g
5	11,5	8	45
10	9	5,5	45

Mating plug must be ordered separatel
(ref. data sheet IW 10278 page 3)

Electrical connections

(View at the male contacts at the housing of the transducer).



Data sheet IW 10806 shows the connector arrangement with view at the contacts of the mating plug.