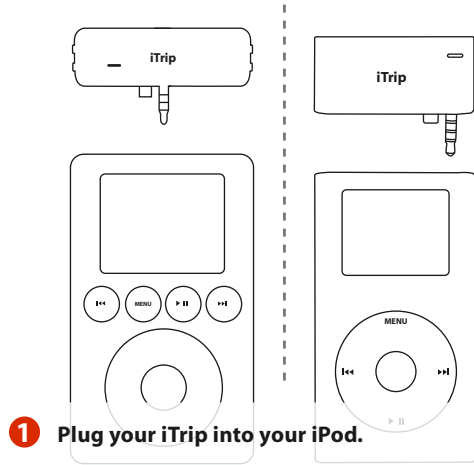


iTrip

MANUAL

Thank you for purchasing the Griffin iTrip, the only wireless FM transmitter made specifically for the iPod. Now you can play your music in your car or anywhere there's an FM radio. Follow these easy steps and you'll be up and running in no time:

GETTING STARTED



1 Plug your iTrip into your iPod.



2 Play some music on your iPod.

Be sure to set the volume to 50%-70%.



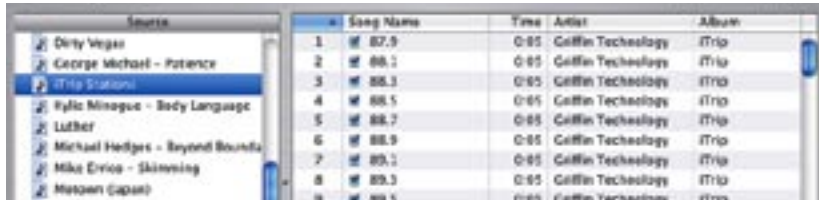
3 Tune your radio to 87.9. The iTrip is preset to 87.9 on your FM radio. To select your own station, follow the instructions that continue inside this booklet.

INSTALLING THE iTrip SOFTWARE

In order to change the radio frequency that the iTrip broadcasts on, you'll have to first install the iTrip Software from the included CD-Rom. Here's how:

Insert the included **iTrip CD-Rom** into your Mac or PC: **Mac Users** - Double-click the **iTrip Installer** icon to launch the installer. **PC Users** - The iTrip Installer should launch automatically. If it doesn't, just run the **setup.exe** file located on the CD-Rom.

Open iTunes. You should now see a playlist called **iTrip Stations** in the Source column on the left side of the window. This playlist will contain a series of short audio files, all of which have radio frequencies as their names.



Connect your iPod to your Mac or PC and sync your iPod with iTunes. The **iTrip Stations** playlist will be transferred to your iPod. If you have changed the default preferences of your iPod, you may have to manually transfer the **iTrip Stations** playlist.

TUNING THE iTrip

The iTrip can broadcast to any frequency on your FM radio. Once you have installed the iTrip Stations onto your iPod, follow these simple steps to tune your iTrip to broadcast your music on a selected frequency.

Scan the FM stations on your radio to find an empty frequency, preferably one that does not have any talking or music on it.

Navigate to the **iTrip Stations** playlist on your iPod by selecting Playlists from the Main menu, then select **iTrip Stations**.

Scroll down and highlight the **iTrip Station** file that matches the frequency you found on your FM radio. Press the **SELECT** button (the button in the middle of your scroll wheel) to play the station.

As your chosen station begins to play, the iTrip light will begin to blink rapidly. As soon as you see this, immediately press the **PLAY/PAUSE (▶||)** button. The light on the iTrip will pulse three times slowly to let you know you've successfully changed stations.

Your iTrip will now broadcast on the station you chose. Press **Menu** on your iPod to return to the Main menu. Now you can navigate to your own music, and start jamming out - wirelessly!



TIPS & TROUBLESHOOTING:

Do I have to tune my iTrip every time I use it?

No. The iTrip will remember the last station you tuned until you tune it again, even if you unplug the iTrip from the iPod.

Does the volume on the iPod always have to be 50% - 70%?

Yes. Volume is very important to the iTrip. Anything lower than 50%, and the iTrip will turn itself off. Anything higher than 70%, and the audio coming from your iTrip could be distorted.

Can I charge the iPod while using the iTrip?

Yes. Just plug your charging cable (like the **Griffin PowerPod Auto Charger**) into your iPod's Dock Connector and you will be able to use your iPod and your iTrip while charging your iPod. If you have the Original FireWire iPod, just swivel your iTrip 90 degrees to expose the FireWire port for charging.

How do I get the best sound quality?

The iTrip works best when tuned to a frequency on your radio that has absolutely nothing but static: no music, no talking, nothing. Ideally, that frequency would have nothing on either side of it as well. To help you find a clear frequency in your area, download our free **iTrip Station Finder** application, available in the Software section of our website at <http://www.griffintechology.com>.

Can I turn the light on the iTrip off?

Yes. Just use the **LED Off** file located in your **iTrip Stations** playlist to do this. Follow the instructions in the **TUNING THE ITRIP** section above, replacing the **iTrip Station** file with the **LED Off** file. To turn the light back on again, do the same thing, just with the **LED On** file.

In Shuffle mode, iTrip Stations get played. Can I avoid this?

The iTrip stations are included in the iPod's library, so they might occasionally get played - but there is a great way to avoid this. Create a **Smart Playlist** that includes all your music *except* the iTrip stations. See our website for specific instructions on how to do this - <http://www.griffintechology.com/support>.

When I tune my iTrip, the iPod plays through all the iTrip Stations.

If the iPod plays through all of the iTrip Station files while you're trying to tune the iTrip, it's likely you missed a step in the tuning procedure. Carefully re-read all of the steps listed in **TUNING THE ITRIP** above and try again.

My iTrip doesn't seem to be working. What can I do?

If your iTrip appears to not be working, try doing a soft reset of the iPod while the iTrip is attached. To do this, press and hold down both the **Play/Pause** and **Menu** buttons on the iPod (**Menu** and **Select** buttons on the iPod mini) until you see the Apple logo appear on screen. After a few moments the iPod will automatically reset itself. Now tune the iTrip and try it again.

iTRIP TECHNICAL SPECIFICATIONS

- Dimensions: 2.4" x .84" (iTrip), 2" x .945" x .5" (iTrip-mini),
- Built-in antenna
- Power Requirement: iPod connection
- Modulation: FM Stereo
- Frequencies: 87.9 - 107.9 MHz
- High stability crystal oscillator, phase-lock loop control
- Stereo separation: greater than 45 dB
- Signal distortion: less than .5%
- Frequency response: 50 Hz to 15 kHz
- Operating range: 10-30 ft (limited by FCC regulations)
- International frequencies software selectable
- FCC compliant (FCC PAV4014TRIP)

For more tips and tricks to help you get the most out of your iTrip, please visit Griffin online support at **<http://www.griffintechnology.com/support>**

This device complies with Part 15 of the FCC Rules. Operation is subject to the following two conditions: (1) this device may not cause harmful interference, and (2) this device must accept any interference received, including interference that may cause undesired operation.

CAUTION: Changes or modifications not expressly approved by the party responsible for compliance could void the user's authority to operate the equipment.

Another great idea from 