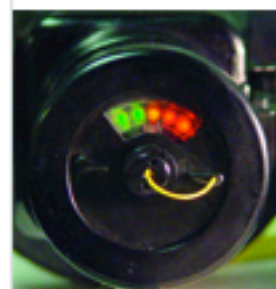
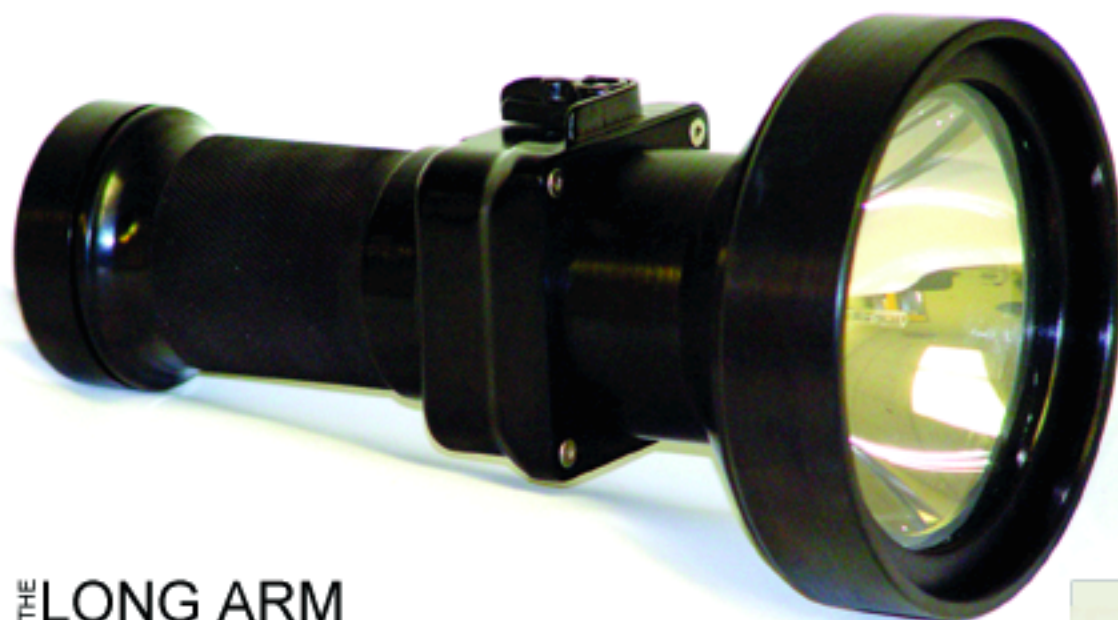




# IDENTIFY YOUR THREAT



1.



2.



3.

## THE LONG ARM RI - 2200



4.

**IR READY**

### HIGHLIGHTS

- SUPER TOUGH, hardened (heat tempered), anodized tool grade - aluminum body resists corrosion and wear.
- SUPER BRIGHT, 1800 lumens light output - illuminates objects up to one kilometer away
- LIGHTWEIGHT, only 1.8 lbs. - 8 inches in length
- SHOCK RESISANT, conforms to MIL-SPEC 810F drop test
- WATERPROOF, 330ft. (powder coated model available for diving)
- LITHIUM ION SMART BATTERY, 80 minute battery life - (160 minute battery available), light weight, absolutely no memory, IC regulated high speed charging. impervious to atmospheric conditions (heat or cold)
- SPS CHARGER, allows for high speed charging through communication with the battery. Can be used anywhere in the world from 80v -to- 230v. Charges in 45 minutes.
- TACTICAL SLING, comes with each light.

### SPECIAL FEATURES

1. UNBELIEVABLY COMPACT
2. REAL-TIME LED BATTERY METER Found in the butt of the handle (IR or Visible: Rotatable IR Filter Shield)
3. THREE SUPER BRIGHT WHITE LED LIGHTS Found in the butt of the handle - For regular flashlight use - Lasts an additional 16 hours (IR or Visible: Rotatable IR Filter Shield)
4. IR FILTER dual sided, tempered, with rubber hood
  - BEAM "BURST" MODE (increases lumens to over 2000)
  - DC/DC CHARGER Also available



reva international limited  
SPECIAL OPERATIONS LIGHTING  
An FMG Company

PHONE: 1800-800-REVA | [www.REVALIGHTING.com](http://www.REVALIGHTING.com)

*"The World's Most  
Powerful Compact  
Searchlights"*