

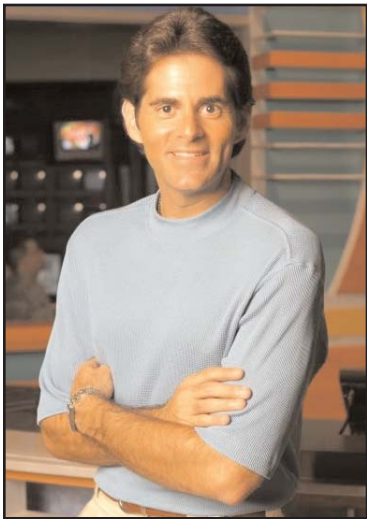


A Report To The Membership

focus Newsletter

April ♦ Volume 5 ♦ Issue 4 ♦ Produced Monthly by The Rosenberg-Richmond Area Chamber of Commerce
www.roserichchamber.com ♦ Phone: 281-342-5464 ♦ Fax: 281-342-2990 ♦ E-mail: gparker@roserichchamber.com

Plug into 'High-Tech Texan' at April Chamber luncheon



Michael Garfield

If you have your wires crossed about which of the latest techno-gadgets could streamline your business operations and make your life easier, plug into the Rosenberg-Richmond Area Chamber of Commerce April luncheon, where our guest speaker, Michael Garfield, "The High-Tech Texan," will get you connected.

If it beeps, chirps, buzzes or uses a remote control, chances are that Michael has

it or certainly knows about it.

Michael Garfield is the technology and Web expert for several media outlets in Texas. He began his broadcasting segments in the late 1990s on the Houston NBC-TV affiliate and continued through 2004 with syndicated programs to Time Warner TV news stations throughout the Southwest. He also hosts a weekly radio program on Talk Radio 950 KPRC in Houston. "The High-Tech Texan Show with Michael Garfield" airs each Saturday afternoon with industry guests, listener call-ins product reviews, and tips and opinions.

As a key figure in the technology industry, he regularly appears at conferences and across the media to speak about the Internet, issues that affect cyberspace, and the paradigm shift of using new technology and products to enhance people's lives.

When not professing the virtues of technology products, Michael runs the Garfield Internet Group, a consulting firm focusing on the engineering trends in the Internet industry. His company specializes in several areas including business development, e-commerce, marketing



You don't have to hunt for a great Blender at Safari Texas

Before heading home after work Tuesday, April 13, please stop by Safari Texas Ranch to unwind and mingle with the Rosenberg-Richmond Area Chamber of Commerce membership for our Business Blender. The Blender runs from 5:30 to 7:30 p.m. so you can come and stay for as long or as short as you please. Enjoy the hors d'oeuvres, adult beverages and entertainment, and let the Safari Texas Ranch/Texas Ballroom staff show off their fabulous facilities, located at 11627 FM 1464 in Richmond.



Safari Texas Ranch is located on a beautiful 44-acre private estate and exotic game ranch that has several types of rooms available for various occasions, from special to business.

The Texas Ballroom can seat from 400 to 850 guests. It boasts a beautiful double staircase and a large stage with a built-in dance floor. The room is decorated with elegant chandeliers.

The Magnolia Ballroom has European décor with an elegant balcony and staircase that can seat 250-500 guests. This room has a

See: Blender Page 2

strategy, promotion and branding of Internet sites. Their client list includes media companies, Web startups and nonprofit organizations.

Before forming Garfield Internet Group, Michael was the Business Development Manager for Microsoft's Sidewalk.com project. Hired to launch Microsoft's local online guide in the Houston market, he oversaw the business and marketing duties for four Sidewalk markets, including Houston, Dallas, Orlando and Miami.

His accomplishments in the online industry include the successful launch of these Webs sites and the sustained marketing efforts in each market. He led the consumer advertising campaigns that included both online and offline media exposure. Michael led several key initiatives of Sidewalk's national

See: Luncheon Page 2

Inside This Month

Board of Directors	3
The Executive Report	3
Leadership	4
New Members	5
Renewing Members	5
Business Blender Review	6
Luncheon Review	7
Groundbreaking	9
Special Members	9
Biz Buzz Column	11

Editor & Layout: Karen Rowley
Contributors: Catherine Bequette, Skip Griffin, Gail Parker

This Newsletter is a publication of The Rosenberg-Richmond Area Chamber of Commerce.
4120 Avenue H
Rosenberg TX 77471
281-342-5464

Luncheon: 'The High-Tech Texan'

Continued From: Page 1 content and marketing efforts, including the formation of a network of live Web cameras.

Prior to his experience with Microsoft, Michael gained experience in the communications, marketing and promotion areas with companies such as MCI, Bank One, and ProServ Sports Management. But it was his first job out of college that propelled his drive to evangelize products in front of masses.

Hired in 1989 as one of the youngest TV Show Hosts on QVC Network, Michael honed his skills as a product pitchman, guiding viewers across the nation through products like fine jewelry, hardware, household items, and, of course, electronics.

Michael is a graduate of the University of Texas at Austin and holds a bachelor's degree in Communications, Radio-TV-Film. In the community, he serves on the board of directors of the Downtown Houston YMCA Houston, Leadership Houston and the University of Houston College of Technology.

To reserve a seat for this event, fax the newsletter insert to 281-342-2990 or call the Chamber at 281-342-5464. Meet us at The Houstonian Golf and Country Club, 12600 Houstonian Drive in Richmond on April 16 from 11:30 a.m. to 1 p.m. The cost of \$20 for members or \$25 for nonmembers includes lunch and the valuable information provided by our guest speaker.

Blender: Safari Texas Ranch

Continued From: Page 1

courtyard setting and also has a built-in dance floor.

The Safari Lodge seats 150-330 guests, has a lakeside view with a built-in stage, beverage area and a large dance floor with an outside deck that has an ornate gazebo.

The Palm Pavilion exudes a Mediterranean-style ambiance that has seating for 100-300 guests. The area features a built-in beverage area, a sparkling pool, palm trees and a parquet dance floor.

For a southwestern flair, lasso the San Antonio room for your next event. It can seat 50 to 150 guests and has a built-in beverage area and a parquet dance floor.

The chapel and gazebos are beautifully decorated and can seat from 50 to 300 guests. They have a lakeside view with scenic garden sites and dressing areas for the bride and groom.

The traditionally styled Richmond Room has a marble fireplace with classic hardwoods and can seat 50-100 guests.

Safari Texas Ranch's professional staff, with 20 years of food and beverage experience, is committed to high standards, attention to detail and quality service. Their event

coordinators can advise and give guidance to plan the event of your dreams.

Mark your calendar to join the Chamber and Safari Texas Ranch staff for an enjoyable evening of networking together.

PROMOTE
YOUR
BUSINESS
HERE



281-342-5464



◆ OFFICERS ◆

John Dorman
Chairman of the Board

Ron Voyles
Vice Chairman

Tom Petrosewicz
Treasurer

J.J. Martinez
Immediate Past Chairman

Gail Parker
President/CEO

◆ DIRECTORS ◆

Herb Appel ◆ Karen Bell ◆ Dean Carpenter ◆ Anthony Francis ◆ Roger Garris ◆ Glen Gilmore ◆ Mary Alice Gonzalez
Clyde King ◆ Dee Koch ◆ Marvin Marcell ◆ David Neeley ◆ Mike O'Connell ◆ Barkley Peschel ◆ Clare Pittman
Dr. Thomas Randle ◆ David Rowe ◆ Sandra Startz ◆ Tom Stavinoha ◆ Ann Travis ◆ Ron Voyles ◆ Allison Wen

The Executive Report

By Gail Parker



Quotes and inspirational sayings intrigue me, so I always pay close attention when I hear one, knowing that sometime in my future I'll probably be able to apply it in some way. Here's one that I've heard over and over, and no doubt most of you have, too:

"If we always do what we've always done, we'll always get what we've always got."

Unfortunately, I'm uncertain as to who originally said that but have seen it attributed to more than one individual. Suffice to say that it's a worthwhile adage that provokes much thought!

Change is something that our community, and more specifically our Chamber, has seen a lot of recently. In February, after a 6-month period without a president of the Chamber, I was given the wonderful opportunity to step into the role. Not only did you, the members, get the first-ever woman in that capacity, you got someone who truly embraces change. But fear not, I don't believe in changing just

for the sake of change – you'll also frequently hear me say things like "if it ain't broke, don't fix it". Point being that over the course of the coming months you'll probably begin to see a few changes, some more subtle than others.

"You cannot expect to achieve new goals or move beyond your present circumstances unless you change." — *Les Brown*

A quick tour of this area of the county will offer a profound example of change in the community: Everywhere you look ground is being broken, slabs are being poured and buildings are rising from the ground like so many buds blossoming into flowers. As new businesses develop, it is our duty as the local Chamber of Commerce to welcome each newcomer, to offer our support and assistance, and strive to enroll each one as a member. A Chamber membership and subsequent involvement can be a vital tool in the promotion of your business through networking opportunities, education, advocacy and exposure.

As newsletter inserts this month, we have included information about a couple (with slight "changes") of the many ways to become more involved.

Having observed frequent confusion regarding our membership levels and rates when talking to potential new members, an overhaul of the process seemed in order. During the past month this course of action was carried out with the able assistance of our Executive Committee. Also included in this month's publication you will find that resulting "change". On that note, I'll leave you with one last quote about the subject:

"To improve is to change; to be perfect is to change often." — *Winston Churchill*

Bugabug

Termite, Bees, Pest and Lawn

When Honesty & Dependability Count
WDI Reports (Termite) \$50 + Tax and Up
Licensed and Insured (Crawls Additional)
281-344-8266

Mark Foltz
BBB Member

We Can Also Schedule
Your Other Inspections



business partner
ONE-STOP MARKETING

Let Business Partner
Take Care of Your Marketing
so you can focus on your business

The advertising agency
for your small Business

281.240.6700

13134 Dairy Ashford Rd. Suite 200
Sugar Land, TX 77478
Fax (281) 240-6711
www.businesspartner.com
100% Satisfaction Guaranteed



The Leadership class interacts with the Sky Med staff to learn about the air ambulance service's capabilities.

Fort Bend Leadership class takes on Healthcare & Social Services industry for final segment before graduation

The Class of 2004 Fort Bend Leadership Program's Healthcare and Social Services session began at Polly Ryon Hospital with the dynamic new Chief Operating Officer Jody Jones, who also happens to be a graduate of the 2003 Leadership class.

Ms. Jones discussed the state of the healthcare industry in the United States, Texas and locally. The challenges the patients, providers, politicians and the insurance industry are facing are staggering. But if we, as leaders, are going to address the difficulties in our community, we must understand the environment in which the answers exist.

The tour with LDR Birthing Facilities for the family is one of the favorite stops on the tour, according to Skip Griffin, co-chair of the Leadership Program. Stat Care's ER physicians have a lot to be proud of with their patient service turnaround time and attitude that never fails to impress the class with the high quality of Fort Bend County's healthcare personnel.

The tour ended with a presentation of the new Sky Med air ambulance capability and M.D. Anderson Cancer care facilities.

From there, the class traveled to South Texas Medical Clinics

where Michael Richard, CFO, discussed the broad range of challenges and resources available through their six facilities in the area.

The Leadership class served and ate lunch with the seniors at the Fort Bend Senior Citizen's Center, and joined in to sing "Happy Birthday" to the those who had added another marker to their lives.

Another highlight of the day was the social services experience that was put together by the Fort Bend Family Health Center. "It is an awesome project involving the staff and time from fifteen or more agencies," said Mr. Griffin. "The day is so important to them that the center closes its doors for the day to clients."

Its purpose is to show people that it is possible to keep their heads above water in the services system. The scenarios and projects that each team addresses are situations that actually happened. "It was revealing and brought a lot of thanks for the grace and benefits we have been blessed with in our daily lives," he said.

The Leadership class and its co-chairs, Mr. Griffin, and Kelley Smith of FortBendJobs.com LLC, would like to thank Charla Kulcak and Michael Richard of South Texas Medical Clinics; Cindy Reaves, Denise Smith, Jody Jones, and David Rowe of Polly Ryon; and Rosario Stanford, Dee Turner and Arlene Nevada at FBSC, as well as Karen Hall and Michal Anderson at FBFHC, for allowing the class to share a day with them and those they serve. "Many thanks" to everyone for the support and enthusiasm given for this productive and beneficial program.

The Leadership program is headed into the home stretch and is looking for new candidates, sponsors, and scholarship donors for the next class, which begins in the fall of 2004 and ends in may 2005. Contact the Chamber, 281-342-5464, for applications. Sign up now!

**Chamber Newsletter
is now online!**



**If you haven't looked at the Chamber's
Web site lately, www.roserichchamber.com,
you're in for a nice surprise.**



New Members

**Stop By
& Welcome
This New
Member
To The
Chamber!**

YES College Preparatory School - Southwest
2000 FM 3155
Richmond, TX 77469
281-238-8000; Fax: 713-910-2350
Rep. Robert A. Lundin

The Scrapbook Shoppe
3016 First St.
Rosenberg, TX 77471
281-239-8845; Fax: 281-341-5572
Rep. Deborah Fredregill

B.W. Development, Inc.
1121 FM 359
Richmond, TX 77469
281-344-8183; Fax: 281-341-5572
Rep. Bernie Fredregill

Renewing Members

AAA Quality Plumbing
3803 Dawn Lane
Richmond, TX 77469
281-531-5584, Fax: 281-238-8505
Rep. Dean Olson

Bill Benton
1509 Georgia
Rosenberg, TX 77471
281-342-3839

Ben & Gladys Conner
16900 Lexington Blvd., # 2310
Sugar Land, TX 77479
281-342-0919, Fax: 281-232-3392

Gary Finch, D.D.S.
1103 FM 359
Richmond, TX 77469
281-342-7050, Fax: 281-342-0015
Rep. Dr. Gary Finch

Baca, Stein, White & Associates
801 Morton Street, Ste. A
Richmond, TX 77469
281-342-2646, Fax: 281-342-3992
Rep. Larry Baca

Bill Heard Chevrolet
13115 Southwest Freeway
Sugar Land, TX 77478-0530
281-491-9000, Fax: 281-491-4176
Rep. Jeff Heath

Davis-Greenlawn Funeral Home
3900 B.F. Terry Blvd.
Rosenberg, TX 77471
281-341-8800, Fax: 281-341-8808
Rep. James Duke

Frank's Nursery
302 FM 359
Richmond, TX 77469
281-342-3211, Fax: 281-232-6665
Rep. Frank Nunez

Bay Ridge Christian College
P. O. Box 726
Kendleton, TX 77451
979-532-3982, Fax: 979-532-4352
Rep. Dr. Verda Beach

CDC Company, Inc.
13405 Southwest Freeway, Ste. 203
Sugar Land, TX 77478
281-242-7782, Fax: 281-242-7841
Rep. Pat Naff

Deedco Properties, Inc.
8303 Southwest Freeway, Ste. 218
Houston, TX 77074
713-988-2400, Fax: 713-772-4118
Rep. David Edgar

Germer and Grillo, Inc.
P. O. Box 911
Rosenberg, TX 77471
713-569-3322, Fax: 713-529-4600
Rep. Joe Grillo, Jr.

Bayou Bend Apartments
2901 Airport Ave.
Rosenberg, TX 77471
281-342-5990, Fax: 281-342-9769
Rep. Tricia Worrell

NewFirst Insurance Services
P. O. Box 1067
Rosenberg, TX 77471
281-341-5041, Fax: 281-232-3780
Rep. Jeff Council

Duran's Roofing & Carpentry
4832 FM 2218
Richmond, TX 77469
281-342-4436, Fax: 281-342-1276
Rep. Robert Duran

Gillman Honda/Mazda/Nissan
26029 Southwest Freeway
Rosenberg, TX 77471
281-341-2277, Fax: 281-344-3610
Rep. Sam Hussain

Arthur Beatty, CPA
10018 Reading Road, Ste. 1A
Richmond, TX 77469
281-238-4946, Fax: 281-238-8096
Rep. Art Beatty

Conn's
15235 Southwest Freeway
Sugar Land, TX 77478
281-313-9200, Fax: 281-313-9208
Rep. Lang Nguyen

Edward Jones Investments
3310 First Street, Ste. E
Rosenberg, TX 77471
281-238-9599, Fax: 888-462-4413
Rep. Ron Voyles

Greatwood Golf Club
6767 Greatwood Parkway
Sugar Land, TX 77479
281-343-9999, Fax: 281-343-9906
Rep. Jared Moss

Judge Brady Elliott
268th District Court
309 Fourth Street, Ste. 423
Richmond, TX 77469
281-341-8610, Fax: 281-341-8614

The Herald Coaster
P. O. Box 1088
Rosenberg, TX 77471
281-232-3737, Fax: 281-342-3219
Rep. Clyde King

Fantastic Sam's
1860 FM 359
Richmond, TX 77469
281-341-6262, Fax: 281-341-6262
Rep. Fred Macha

Holiday Cleaners
1305 FM 359, Ste. H **Special**

See: Renewing Page 10

**Any member can host
a BUSINESS BLENDER!**

**Cost-Effective
Advertising**

281-342-5464

**The Rosenberg-Richmond Area Chamber of Commerce
Honors These Credit Cards!**



Jimmy G. Myska, Inc. Business Blender



Cecelia and Ronald Urbanek — Cecelia is the president of Health Delite, where she sells natural vitamins and herbs.



James Duke of Davis-Greenlawn Funeral Home and some of his associates unwind at the Blender.



Barbara Benes and Sandy McGee



Amy Urbanek of M.E. Duff & Associates and Don Dulin of DonDulin.com



John Laine, Kay Vogler, Mary Lou Cozean, and Commissioner Tom Stavinoha



Servers at Sandy McGee's contributed to a successful event.



Bradley Stavinoha was among those enjoying the Business Blender hosted by Jimmy G. Myska, Inc. at Sandy McGee's.

Business Blender Review

Chamber members enjoyed a pleasant evening at the March business blender held at Sandy McGee's in Richmond, which was hosted by Jimmy G. Myska, Inc.

The following lucky people won \$10 gift certificates for Sandy McGee's: Sue Mitchell of Coastal Banc, Ruth Carrell of Watermark Graphics, Mark Cernosek of Consolidated Testing Services, Barbara Benes of Benes Real Estate, Janie Osuna, Juliana Elmore, and Jack Myska of Myska Real Estate. Karen Mullin and Rosalie Tucker of All About Change won a cheesecake.



Sandy McGee outdid herself again with her tasty hors d'oeuvres.

March Monthly Luncheon

Mazie Leftwich of Psychosocial Services shares success traits

Those who made it to the Chamber's monthly luncheon in March to find out "How to Develop Your Most Important Asset" had an enjoyable and informative respite from work with the personable guest speaker, Mazie Leftwich – even if we did have to take a test!

The test gave us our "professional excellence" score, which basically told us if we are doing well, have room to grow, or if we need to take Mazie's business card.

So what is your greatest asset? YOU, of course!

During the luncheon, Mazie shared results of two different polls of successful people, taken by the Gallop Poll and the National Speakers Association, respectively, that reaped the Top 15 reasons for success and the Top 10 reasons for failing. They are reprinted below, including the mystery No. 8 slide that was missing.

Top 15 Reasons for Success

- 1) Have a personal faith in God.
- 2) Know that happiness comes from within.
- 3) Don't expect high achievement to bring supreme happiness.
- 4) Share your success with others as you become successful.
- 5) Understand that you can be successful in more than one field.
- 6) Fall in love with books, and learn to enjoy reading.
- 7) Look for the mentors that will guide you.
- 8) Find purpose and meaning in what you do or you will have no passion for life.
- 9) Don't allow yourself to be discouraged by obstacles.
- 10) Develop a clear set of goals.
- 11) Don't expect success to fall in your lap.
- 12) Place a high premium on developing common sense.
- 13) Know that success isn't necessarily a matter of genius.
- 14) Don't rest on your laurels.
- 15) Regard material rewards as a bi-product, not a goal.

Top 10 Actions to Assure Failure

- 1) Waste time worrying about things you cannot change.
- 2) Fail to live within your means.
- 3) Believe that success is measured by wealth.



Mazie Leftwich of Psychosocial Services was the guest speaker and Ron Voyles, Rosenberg-Richmond Area Chamber of Commerce Vice Chairman, conducted.

- 4) Force your thoughts on others.
- 5) Don't understand that forgiving and forgetting is the best way to get even.
- 6) Fail to put aside trivialities in order to accomplish the greater good.
- 7) Waste your time reading worthless books and magazines.
- 8) Think that others can't get along without you.
- 9) Live without finding the purpose of your life.
- 10) Do not have spiritual connections.

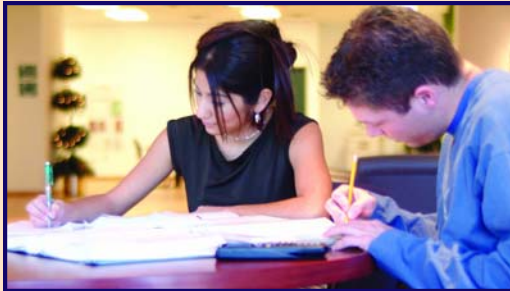
Mazie Leftwich, of Psychosocial Services in Stafford, has more than 30 years of counseling and psychotherapy experience. She holds workshops and training seminars, as well as retreats in a wide variety of topics, including effective communication, strategic planning, team problem solving, time management, conflict resolution, finding your authentic self, female disorders involving hormones, men and depression, anxiety, negotiating, marriage counseling, and more. She can be reached at 281-240-8855 or mazie@mazieleftwich.com.



Mazie Leftwich explains to the audience that what we choose to do with ourselves determines who we are.



Wharton County Junior College



**WCJC Fort Bend Technical Center
Texas State Technical College**
High Tech, High Demand

CAMPUSES CONVENIENTLY LOCATED NEAR YOU!

- SMALL CLASS SIZES
- PERSONAL ATTENTION
- AFFORDABLE TUITION



Sugar Land Campus
Commuter Focused, Transfer Driven

- Associate in Arts Degree
- Associate in Applied Science Degrees
- Certificate and Certification Programs
- Distance Learning
- Dual and Concurrent Enrollment
- Continuing Education
- Fine Arts Events
- Intercollegiate Athletics
- Campus Housing
- Financial Aid Counseling
- Work Force Development
- Adult Basic Education
- Kids' College
- Senior Citizens Program



Wharton Campus
Rich in Tradition

FUTURES BEGIN HERE

For more information, call today:

1-800-561-WCJC

www.wcjc.edu

Tom DeLay named Honorary Chair of 2004 Chamber Golf Classic



Mike O'Connell, Gail Parker and John Dorman express their appreciation to U.S. Congressman and Majority Leader, Tom DeLay (second from left), for his participation in the upcoming 2004 Chamber Golf Classic. Congressman DeLay has been named Honorary Chair of the June 7th event, which will take place at the Pecan Grove Country Club. Sterling McCall Automotive Group will be presenting again this year. The Congressman will also act as auctioneer for a limited number of live auction items. Mike O'Connell of ECO Resources is a board member and the tournament chair. For more information, call 281-342-5464.



Photo provided by The Herald-Coaster

Several people showed up to rally around the Rosenberg Railroad Museum's ground-breaking on March 2, 2004, in anticipation of the relocation of the switching station.

Since 1983!

HOUSTON LANDSCAPES UNLIMITED

(281) 568-7500 www.houstonlandscapes.com

"Celebrating Our 20th Year"



These Members go beyond the "Call of Duty" in support of The Rosenberg-Richmond Area Chamber of Commerce and deserve special recognition.

CHAIRMAN'S CABINET

City of Richmond

City of Rosenberg

Coastal Banc SSB

Polly Ryon Memorial Hospital

Sterling McCall Automotive Group

Wells Fargo Bank

PRESIDENT'S CABINET

Greater Fort Bend EDC

Frito-Lay, Inc

International Bank of Commerce

ROUND TABLE MEMBERS

Albis Corporation

Bison Building Materials, LTD.

Browning-Ferris Industries

Casares, Inc. dba

Camino Real Mexican Café

CenterPoint Energy

Eco Resources, Inc.

Gurecky Manufacturing Service, Inc.

The Herald Coaster

Lamar CISD

Newland Properties

Null-Lairson, P.C.

Pecan Grove Plantation Country Club

Severn Trent Environmental Services Group

Southwest Bank of Texas - Rosenberg

Texana Plantation

Thomas J. Petrowicz, CPA

Wal-Mart Store #546

Renewing Members — continued

Continued From: Page 5

Richmond, TX 77469
281-341-9066, Fax: 281-238-9375
Rep. Melinda Weddle

Holmes Smokehouse
7037 Highway 36 South
Pleak, TX 77471
281-342-3749, Fax: 281-342-9658
Rep. Rodney Roth

Houston Title Company
1600 Hwy. 6, Ste. 160
Sugar Land, TX 77478
281-265-9500, Fax: 281-265-9001
Rep. Diane McClure

International Bank of Commerce
5250 FM 1640
Richmond, TX 77469
832-595-0920, Fax: 832-595-0906
Rep. Andrea O'Neill

Rebecca Beard Junker P.C., CPA
212 Jackson
Richmond, TX 77469
281-342-9476, Fax: 281-239-7503
Rep. Rebecca Junker

Lerma Construction Co., Inc.
912 S. Sixth St.
Richmond, TX 77469
281-342-4153, Fax: 281-342-6519
Rep. Mike Lerma

The Loan Store, Inc.
4407 Avenue H
Rosenberg, TX 77471
281-232-2274, Fax: 281-232-8585
Rep. John Laine

Lytle & Moore Attorneys-At-Law
2116 Thompson Highway, Ste. 116
Richmond, TX 77469
281-342-9119, Fax: 281-232-4882
Rep. Jack Moore

Mahler Water Well Service, Inc.
P. O. Box 82
Orchard, TX 77464
281-342-9861, Fax: 281-342-9861
Rep. Steve Mahler

Mental Health Association of Fort Bend County
10435 Greenbough Drive
Bldg. 2, Ste. 200
Stafford, TX 77477-5000
281-261-1876, Fax: 281-261-1833
Ms. Theresa Kopnicky

Mueller, Inc.
3575 Hwy. 59
Rosenberg, TX 77471
281-342-0760, Fax: 281-342-0842
Rep. Eric Jones

Natural Springs Water Filtration
11437 FM 1464
Richmond, TX 77469
281-277-3232, Fax: 281-277-7834
Rep. Rose Schulle

Pecan Grove Plantation Country Club
3000 Plantation Drive
Richmond, TX 77469
281-342-9940, Fax: 281-342-9618
Rep. Jayson Petersen

Physical Therapy Care of Fort Bend
1106 Morton, Ste. 5
Richmond, TX 77469
281-344-8900, Fax: 281-344-8926
Rep. Patti Kocich

Plantation True Value Hardware
1221 FM 359
Richmond, TX 77469
281-342-5207, Fax: 281-232-6466
Rep. Jim Tucker

Retriever Payment Systems
1114 Fair Acres Dr.
Sugar Land, TX 77478-2708
281-963-1111, Fax: 281-242-2582
Rep. David Goodrum

Riha Construction Co.
P. O. Box 463
Rosenberg 77471
281-342-2406, Fax: 281-342-5994
Rep. J. L. Riha

Rosenberg Carpet Center, Inc.
1006 First Street
Rosenberg, TX 77471
281-342-5193, Fax: 281-342-0000
Rep. Michael Lopez

Raymond Saage
1106 Golfview
Richmond, TX

77469
281-342-3017, Fax: 281-238-7170
Silva Contracting Company, Inc.
6130 FM 2218
Richmond, TX 77469
281-342-9314, Fax: 281-342-2878
Rep. Cayetano Silva, III

Sonic Drive In – Rosenberg
1704 Avenue H
Rosenberg, TX 77471
281-342-6732, Fax: 281-239-8150
Rep. B. J. Sandhop

South Texas Medical Clinics, P.A.
2100 Regional Medical Drive
Wharton, TX 77488
979-532-7772, Fax: 979-532-7739
Rep. Charla Kulcak

Special Touch Janitorial Services
P. O. Box 721
Manvel, TX 77578
281-585-0289, Fax: 281-585-5489
Rep. Sherry Love

Tammy's Psychic Consultant
1620 Ave H
Rosenberg, TX 77471
281-232-4436
Rep. Tammy Adamo

University of Houston System at Sugar Land
14000 University Blvd.
Sugar Land, TX 77479
281-275-3315, Fax: 281-275-3301
Rep. Sharon Baca

Allstate Insurance, Weems Insurance Agency
2914 Avenue I
Rosenberg, TX 77471
281-232-0073, Fax: 281-232-0221
Rep. Rodney Weems

Western Steakhouse
3614 Avenue I
Rosenberg, TX 77471
281-342-9602, Fax: 281-344-9328
Rep. Scott Walenta

**Thank You
for your
continued
support!**

Taste the Difference.

Our superb enchiladas, special slow cooked sauces and impeccable service really sets us apart from the rest. Our friendly wait staff is here serving lunch and dinner 7 days a week.

CAMINO REAL
MEXICAN RESTAURANT

4511 Hwy. 90A Rosenberg, Texas 77471
Open Monday - Friday 11:00am to 9:30pm
Weekends 8:00am to 10:00pm • (281) 341-1900

**South-of-the-Border Breakfast
Saturday & Sunday 8:00am to 11:00am**



YES College Prep School opens in old Wharton Jr. College building

To place an announcement in the Biz Buzz column, please send your press release by the 10th of each month for consideration to Karen Rowley, krowley@rosrichchamber.com.



YES (Youth Engaged In Service) College Preparatory School, a tuition-free public school dedicated to preparing all students for success at the four-year college or university of their choice, is opening its newest campus in Fort Bend County. The school was founded in 1998, and has offered unparalleled academic and extra-curricular opportunities to students from traditionally underserved communities.

YES has received an Exemplary rating from the Texas Education Agency every year of its operation.

The school's mission is to ensure that students from low-income communities are prepared to succeed in the four-year college or university of their choice.

YES students attend classes from 7:40 a.m. to 5 p.m. every day, attend Saturday school at least once a month, and participate in a month-long summer session. The students also have the opportunity to participate in clubs and extra-curricular activities as an integral part of the school day. Finally, the YES curriculum teaches that service to one's community is vital, as students engage in monthly service projects within their communities.

YES College Prep has created a school where kids from underserved communities and all different academic levels are excelling, and results show that over the past three years, 100 percent of the students in the first three graduating classes have earned acceptances to 80 colleges and universities and have received more than \$3.6 million in scholarships and financial aid.

YES College Preparatory School-Southwest will open August 2004, serving sixth grade students. YES has received a generous grant from The George Foundation to open its Richmond site at 2000 FM 3155 (the site formerly occupied by Wharton County Junior College). The school will add an additional grade level every year until it becomes a sixth through twelfth grade school.

YES College Preparatory School is enrolling current fifth grade students for the 2004-2005 school year. The school is eager to work closely with the Richmond and Rosenberg communities.

For more information, please call Robert Lundin — Founding School Director by telephone at 281-238-8000 or by e-mail at rlundin@yesprep.org or visit www.yesprep.org.

AWARD



• The Energy Services Division of **Nalco Company** in Sugar Land received the prestigious Volunteer Protection Program (VPP) Star Award from the Occupational Safety and Health Administration (OSHA) for recognition of Nalco's leadership in workplace safety and health, and for its commitment to excellence, which makes them role models in their industry and community. The Star is the highest award in its category. VPP is a voluntary, cooperative partnership involving companies that exceed legal obligations to revolutionize attitudes about protecting workers. John S. Wantuch, plant manager of Nalco Co., said the award was given after a five-member team of OSHA inspec-



Photo provided by YES College Preparatory School

YES College Prep School is enrolling fifth-grade students now for the 2004-2005 school year.

tors spent a week at the site conducting a wall-to-wall inspection of the facility and interviewing more than 40 employees. The VPP program has existed for 21 years and just over 1,000 sites have received the award in that time.

www.stevenleonardphotography.com.

• **All About Change** moved into a larger building at 208 Morton Street in Richmond, just down the street from its previous location. Its new phone and fax number are 281-341-6100.

MOVES

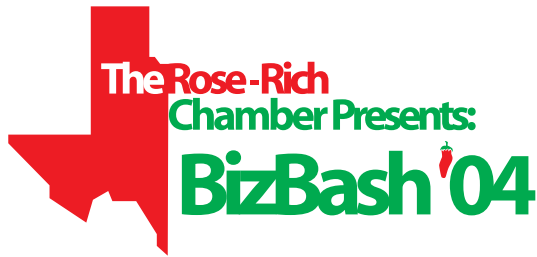


• **Steven Leonard Photography** has moved to 7002 Riverbrook, Ste. 900E in Sugar Land. He has served Fort Bend County for about 20 years, and decided to open this new studio to better serve his clients. He does most of his work on location, but also offers portraits for all types of occasions at his studio, including wedding, families, graduation and children. His wife, Alicia, is the office manager for the studio. Steven is now offering some digital photography services and works with several assistants and photographic laboratories to ensure dependable and reliable service. He works by appointment only and can be contacted at 281-341-1200 or seleonard@earthlink.net. His fax number is 281-341-6311 and his Web site is

OPPORTUNITIES

• **Benes & Associates** is in need of donations and giveaways for its parent/youth archery tournament June 12, 2004, which will benefit the Fort Bend County 4H Archery JOAD (Junior Olympic Archery Development) project. There are several serious youth archers in need of funds to upkeep equipment and supplies. The event is expected to have an attendance of around 200 people. Sponsors would receive a prominent display during the event. This would be a good opportunity to promote the area as well as support the youth. For more information, call Sharon McElrath, 281-240-6110, Ext. 6.





Watch the Growth . . . Share the Prosperity

Come Fiesta With Us!

Mark your calendar for **Tuesday, May 11, 2004**

5:00PM to 9:00PM

At the Safari Texas Ranch

Make the most of this opportunity to promote your services and new products to members of the Fort Bend Community!

Don't miss out on the fun and the potential for new customers and clientele--reserve your booth space today!

HIGHLIGHTS:

- **Entertainment by The Ezra Charles Band**
- **Tasting from 15 area restaurants**
- **Lots of publicity for your business**
- **Booth discounts for chamber members**

*Call the Rosenberg-Richmond Area Chamber of Commerce
for reservations and information: 281-342-5464*