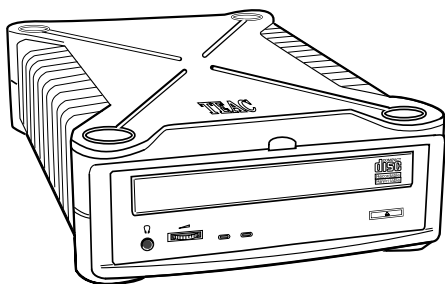


**FireWire (IEEE 1394)  
CD-RW Drive  
User's Manual**



**CD-RW5120i  
12X10X32**

**TEAC®**



---

## Safety Precautions

TEAC CD Rewritable (CD-RW) Drives are high-precision electronic devices. Do not use them in any manner other than as specified in this manual. Please read this manual in its entirety before you begin the installation procedure. Use of controls, adjustments, or performance of procedures other than those specified herein may result in hazardous radiation exposure.

To prevent fire or shock, do not expose the unit to moisture or rain.

To prevent electrical shock, do not attempt to disassemble the CD-RW Drive. Refer servicing to authorized personnel.

The CD-RW Drive utilizes a laser beam that can be harmful to the eyes. Do not disassemble the cabinet or unit. Do not attempt to look through the front panel or into the unit while the power is turned on.

A user who changes or modifies the unit or operating procedures specified herein without express written approval by the manufacturer will void user authority to operate the equipment.

Specifications and features subject to change without notice or obligation.

---

## FCC Radio Frequency Interference Regulations

**Warning:** This equipment generates, uses, and can radiate radio frequency energy and if not installed and used in accordance with the instructions contained in this manual, may cause harmful interference to radio and television communications. This equipment has been tested and found to comply with the limits for a Class B digital device pursuant to Subpart J of Part 15 of the FCC Rules. These limits are designed to provide reasonable protection against harmful interference in a residential installation. However, there is no guarantee that interference will not occur in a particular installation. To ensure compliance with FCC rules, the cable that connects the unit to the computer must be a shielded interface cable.

Note: Connecting this device to peripheral devices that do not comply with Class B requirements or using an unshielded peripheral cable could result in interference to radio or television reception. To ensure that the use of this product does not contribute to interference, use a shielded interface cable.

If this equipment does cause harmful interference to radio or television reception (which can be determined by turning the equipment off and on), the user may try to correct the interference by one or more of the following measures:

- Reorient or relocate the receiving antenna.
- Move the device and the receiver further apart.
- Connect the equipment to an electrical outlet on a different circuit than the receiver.
- Consult the dealer or an experienced audio television technician.

Also, the following booklet may prove helpful: *How to Identify and Resolve Radio-TV Interference Problems*. It is available from the U.S. Government Printing Office, Washington, D.C. 20402, stock number 004-000-00345-4.

The user is cautioned that any changes or modifications not expressly approved by TEAC America, Inc. could void the user's warranty.

---

## Copyright and Trademark Information

- TEAC is a trademark of TEAC Corporation.
- IBM PC is a registered trademark of International Business Machines Corporation.
- Windows, Windows 95, Windows 98, Windows Me, Windows 2000 Professional, and Windows NT are trademarks or registered trademarks of Microsoft Corporation.
- iMac DV, Power Macintosh G3 and G4 are trademarks or registered trademarks of Apple Computer, Inc.
- Adobe and Acrobat are trademarks of Adobe Systems, Inc.
- Adaptec is a trademark of Adaptec, Inc.
- Firewire is a trademark of Apple Computer, Inc.
- All other trademarks and registered trademarks are the property of their respective owners.

© Copyright 2001 TEAC America, Inc. All rights reserved. TEAC America, Inc. reserves the right to modify product offerings or specifications without advance notice. No part of this publication may be produced in any format without the express written permission of TEAC America, Inc.

---

## Registration Information

There is no need to register any portion of this kit. TEAC provides 100% support for the drive and the Adaptec software. Refer to “Appendix C. Technical Support” on page 42 if you wish to contact TEAC.

---

## Product Warranty Information

This TEAC CD-RW Drive features a one year warranty from the date of purchase. Please keep your receipt as proof of purchase.

---

## About This Manual

This *TEAC FireWire IEEE1394 CD-RW Drive User's Manual* explains how to install and operate the TEAC FireWire CD-RW Drive. It is divided into the following main sections:

**Chapter 1. Introduction:** This chapter introduces the FireWire CD-RW drive and describes shipping package contents and recommended system requirements.

**Chapter 2. Connecting the FireWire CD-RW Drive:** This chapter explains how to connect the FireWire CD-RW drive to your computer and to audio equipment. It also includes an important section on updating the Firewire/IEEE 1394 driver in Windows 98SE using the included Update Module CD-ROM disc.

**Chapter 3. Installing Software on Windows Systems:** This chapter explains how to install the pre-mastering and other software included on the *TEAC FireWire CD-RW Software* CD-ROM for Windows systems.

**Chapter 4. Installing Software on Macintosh Systems:** This chapter explains how to install the pre-mastering software included on the *TEAC FireWire CD-RW Software* CD-ROM for Macintosh systems.

**Appendix A. About CD-R and CD-RW Discs:** This appendix contains information about media, formats, and loading and ejecting discs.

**Appendix B. Specifications:** This appendix provides technical specifications for the TEAC FireWire CD-RW drive.

**Appendix C. Technical Support:** This appendix provides technical support listings for TEAC in North America.

---

## Table of Contents

Safety Precautions .....	i
FCC Radio Frequency Interference Regulations .....	i
Copyright and Trademark Information .....	ii
Registration Information .....	ii
Product Warranty Information .....	ii
About This Manual .....	ii
List of Figures .....	v
<b>Chapter 1. Introduction .....</b>	<b>1</b>
About FireWire .....	1
Recommended System Requirements .....	1
For Windows systems: .....	1
For Macintosh systems: .....	2
FireWire CD-RW Package Contents .....	2
IEEE 1394 Update Module .....	2
For Windows systems: .....	2
For Macintosh systems: .....	2
Front Panel .....	4
Rear Panel .....	6
<b>Chapter 2. Connecting the FireWire CD-RW Drive .....</b>	<b>7</b>
Drive Orientation .....	7
Connecting the CD-RW Drive to the Computer System .....	7
Connecting to Audio Equipment .....	10
How to proceed with this installation: .....	11
Installing the FireWire/IEEE 1394 Driver Update Module for Windows 98SE .....	11
High Speed Recording Guidelines (Enabling DMA) .....	12
Windows 2000 .....	12
Windows 98SE and Windows ME .....	13
Windows Drive Detection .....	13
<b>Chapter 3. Installing Software on Windows Systems .....</b>	<b>15</b>
Installing Easy CD Creator and DirectCD Software .....	16
About the Reference Guides, ReadMe Files, and Help Files .....	21
About Online Registration .....	21
About Web Checkup .....	21
Starting Easy CD Creator .....	22
Using Easy CD Creator .....	22
CD Copier .....	23
Copying (Duplicating) Discs Using CD Copier .....	23
Using your CD-RW Drive as Source and Target .....	24
Creating a CD from a CD Image in Easy CD Creator .....	24
Creating an Image File .....	24

Creating a CD from the CD Image File: . . . . .	25
Creating an Audio CD from Multiple Discs . . . . .	25
Extracting Audio Tracks to Wave Files . . . . .	26
Creating a Music CD from WAV, MP3, and WMA files . . . . .	26
Starting DirectCD . . . . .	28
Using DirectCD . . . . .	29
Formatting a Disc with Direct CD . . . . .	29
Ejecting a DirectCD Disc (ISO 9660 Closed Session Format) . . . . .	30
Writing Additional Data to a DirectCD Disc . . . . .	31
Uninstalling Programs . . . . .	31
<b>Chapter 4. Installing Software on Macintosh Systems . . . . .</b>	<b>33</b>
Installing Toast Software . . . . .	34
Starting Toast . . . . .	37
<b>Appendix A. About CD-R and CD-RW Discs . . . . .</b>	<b>39</b>
Handling Discs . . . . .	39
Recommended Media . . . . .	39
Disc Formats . . . . .	40
Loading and Ejecting Discs . . . . .	40
<b>Appendix B. Specifications . . . . .</b>	<b>41</b>
<b>Appendix C. Technical Support . . . . .</b>	<b>42</b>

---

## List of Figures

Figure 1. FireWire CD-RW Drive Kit Package Contents .....	3
Figure 2. Front Panel of the FireWire CD-RW Drive .....	4
Figure 3. Rear Panel of the FireWire CD-RW Drive .....	6
Figure 4. Connecting the Power Cable and Power Adapter Block .....	8
Figure 5. Connecting the Power and FireWire Cables to the CD-RW Drive ...	9
Figure 6. Unplug Icon .....	10
Figure 7. Secondary IDE Channel Properties Panel .....	12
Figure 8. Properties Panel .....	13
Figure 9. Close Program Panel .....	16
Figure 10. Adaptec Easy CD Creator/DirectCD Main Installation Panel .....	17
Figure 11. InstallShield Setup Panel .....	17
Figure 12. Welcome Panel .....	18
Figure 13. DirectCD Installation Support Warning .....	18
Figure 14. Software License Agreement Panel .....	18
Figure 15. Choose Destination Location Panel .....	19
Figure 16. Setup Complete Panel .....	19
Figure 17. Main Installation Panel .....	20
Figure 18. Reboot System Request Panel .....	20
Figure 19. Easy CD Creator Welcome Panel .....	22
Figure 20. DirectCD Wizard Panel .....	28
Figure 21. Adaptec Toast Software Icon .....	34
Figure 22. Toast Main Installation Panel .....	34
Figure 23. Continuation Panel .....	35
Figure 24. Read Me/Registration Panel .....	35
Figure 25. Toast 4.1.2 Installer Panel .....	36
Figure 26. Installing Panel .....	36
Figure 27. Installation Successful Panel .....	36
Figure 28. Toast Folder .....	37
Figure 29. Toast Main Panel .....	37
Figure 30. How to Handle Compact Discs (CD-R and CD-RW) .....	39
Figure 31. Ejecting the Disc Tray .....	40





---

## Chapter 1. Introduction

Thank you for purchasing a TEAC FireWire CD-RW Drive kit.

The TEAC FireWire CD-RW Drive can write to CD-R media at up to 12X speed, write to CD-RW media at up to 10X speed, and read at a maximum of 32X speed (It is also capable of operating at slower speeds, if preferred.)

CD-R discs enable you to create audio or data discs for permanent archival storage. They cannot be overwritten. You can overwrite CD-Rewritable (CD-RW) discs, typically up to 1,000 times.

The TEAC FireWire CD-RW Drive is an external peripheral device designed for use with IBM PC compatible or Apple Macintosh computers that feature a FireWire (IEEE 1394) port. It features a hot-swappable FireWire interface and a powered tray for convenient disc loading. (Please refer to “Appendix B. Specifications” on page 41 for detailed information.)

---

### About FireWire

IEEE 1394 is an industry standard serial communications interface protocol published by the Institute of Electrical and Electronics Engineers. It is commonly referred to as “FireWire.”

FireWire allows for extremely high-speed connections between personal computers and peripherals or electronic devices (such as digital video cameras, etc.). Currently, FireWire can attain data transfer rates of up to 400 Mbits per second.

FireWire connections do not require bus termination. You can connect up to 17 FireWire devices in a serial daisy chain, or up to 63 devices using a branching configuration.

---

### Recommended System Requirements

**For Windows systems:**

- ☐ IBM PC-compatible computer: Pentium II 300MHz or higher
- ☐ 64MB of RAM
- ☐ Available FireWire/IEEE 1394 interface port
- ☐ Windows 98SE/Me or Windows 2000 Professional (Full installation, no upgrades; Windows 95 and NT 4.x are not supported.)
- ☐ 800MB available hard disk space for CD image creation
- ☐ CD-ROM drive (DAE support for CD to CD copy)
- ☐ 80MB available hard disk space for premastering software installation

### **For Macintosh systems:**

- ☐ Apple iMac DV, iBook, Power Macintosh G3, G4 or higher; 233 MHz or higher
- ☐ 64MB of RAM
- ☐ Available FireWire/IEEE 1394 interface port
- ☐ Mac OS 9.0.4 or higher
- ☐ Mac FireWire driver version 2.1 or higher
- ☐ 50MB available hard disk space for premastering software installation
- ☐ 800MB available hard disk space for CD image creation
- ☐ CD-ROM drive (DAE support for CD to CD copy)

---

## **FireWire CD-RW Package Contents**

The TEAC FireWire CD-RW Drive kit includes the following items (see Figure 1 on page 3).

- ☐ TEAC FireWire CD-Rewritable (CD-RW) External Drive
- ☐ Blank CD-R disc
- ☐ Blank CD-RW disc (high-speed 4x to 10x)
- ☐ FireWire/IEEE 1394 interface cable
- ☐ AC power cable and transformer (two pieces)
- ☐ *TEAC FireWire CD-RW Drive User's Manual* (this booklet)
- ☐ Three CD-ROM discs containing the following software:

### **IEEE 1394 Update Module**

- ☐ Module to update IEEE 1394 Drivers for Windows 98SE

### **For Windows systems:**

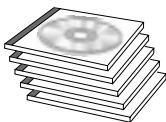
- ☐ Adaptec Easy CD Creator premastering software (Version 4.03a or higher)
- ☐ Adaptec Direct CD drag & drop software (Version 3.03a or higher)

### **For Macintosh systems:**

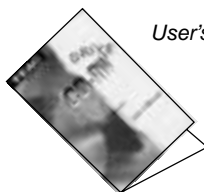
- ☐ Adaptec Toast premastering software (Version 4.1.2)

Five discs:

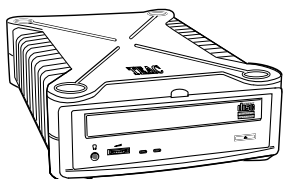
- two CD-RW premastering software discs
- two blank discs
- one driver update disc



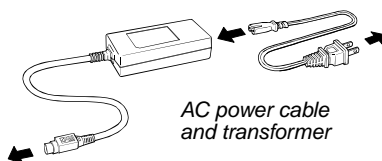
User's Manual



FireWire interface cable



TEAC FireWire CD-RW Drive



AC power cable  
and transformer

Figure 1. FireWire CD-RW Drive Kit Package Contents

**Note:** If any of the items above is missing from your kit upon purchase, please contact your vendor immediately for replacement.

## Front Panel

Figure 2 illustrates the front panel of the CD-RW Drive.

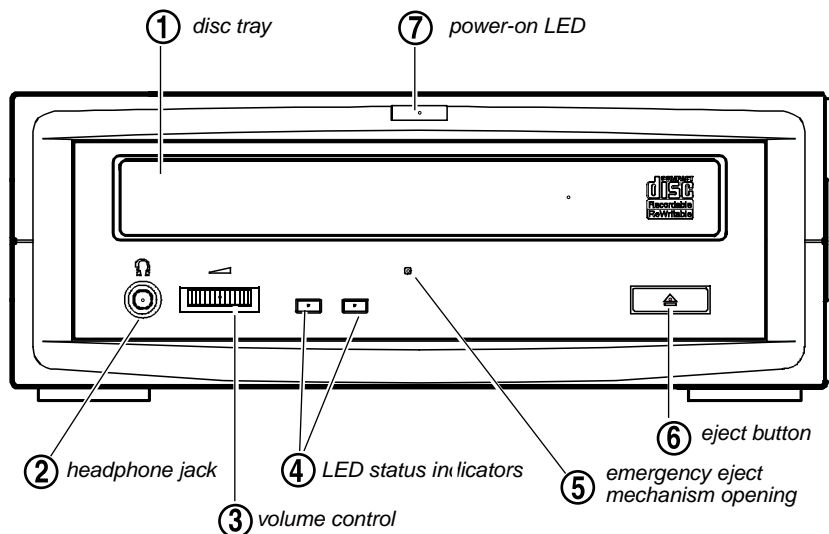


Figure 2. Front Panel of the FireWire CD-RW Drive

- ① **disc tray:** Use the disc tray to load CDs into the drive. You can open the tray by pressing the Eject button. (In an emergency, you can use the emergency eject mechanism. See item 5, below.) Close the tray by pressing the Eject button.

***Note:** Do not push in the tray to close it; press the Eject button to extend or retract the tray.*

- ② **headphone jack:** When listening to an audio CD, you can connect headphones or external speakers to this jack. Use a 3.5 mm stereo mini-plug. For external speakers, connect a stereo adapter to split the output into separate cables for the left and right channels. Such adapters convert a male stereo mini-jack to two female phono jacks.
- ③ **volume control:** The volume control adjusts the volume. Turn the control to the right to increase the volume, left to decrease. (Lower the volume before you start a CD-ROM audio program to protect your hearing and the audio speakers.)

- ④ **LED status indicators:** Two LED lights on the front panel indicate the following operations as follows:

Operation	Left LED indication	Right LED indication
At tray loading	off	<i>blinks green (fast)</i>
At tray eject	off	<i>blinks green (fast)</i>
During write/erase	<i>blinks green (slow)</i>	off
During CD playback	off	<i>blinks green (slow)</i>
During seek/data transfer	off	<i>lights green</i>
During starting	off	<i>blinks green (medium)</i>
Self-diagnosis error or starting error	off	<i>blinks green (slow)</i>

- ⑤ **emergency eject mechanism:** If the Eject button fails, you can *turn off the power to the CD-RW drive* and insert a small, thin rod (such as a straightened paper clip) into the emergency eject mechanism opening and press firmly to eject the disc.

**Caution:** *Do not attempt to use the emergency eject mechanism when either the Power or Busy indicator is lit or you may seriously damage the disc or the CD-RW drive.*

- ⑥ **eject button:** Press this button to open or close the disc tray. (DirectCD disables the manual Eject button and relies on software commands to eject the disc. Refer to DirectCD Help for more information.)
- ⑦ **Power-on LED:** This LED is lit when the power to the drive is on, and unlit when power is switched off.

## Rear Panel

Figure 3 illustrates the rear panel of the FireWire CD-RW Drive.

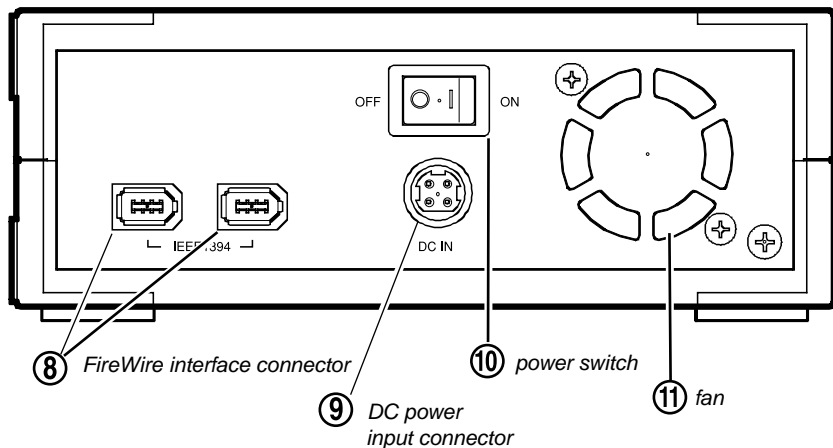


Figure 3. Rear Panel of the FireWire CD-RW Drive

- ⑧ **FireWire interface connectors (2):** Connect the included FireWire interface cable to either FireWire connector. (The other end of the interface cable connects to a FireWire port on your computer. See “Chapter 2. Connecting the FireWire CD-RW Drive” on page 7.)
- ⑨ **power connector:** Connect the AC power cable to this input connector. Plug the other end into an AC power outlet. (For more information, see “Chapter 2. Connecting the FireWire CD-RW Drive” on page 7.)

**Caution:** To ensure proper operation, use only the original AC power cable that came with your TEAC FireWire CD-RW drive.

- ⑩ **power on/off switch:** This switch turns the power to the FireWire drive on or off.
- ⑪ **fan vent:** The cooling system of your drive is equipped with a heat sensor. It is normal that the fan does not turn on until the unit requires cooling. Do not impede air flow from the fan vent, or the FireWire drive may overheat.

---

## Chapter 2. Connecting the FireWire CD-RW Drive

This chapter explains how to connect the TEAC FireWire CD-RW drive to an IBM PC compatible or Apple Macintosh computer. It also explains how to install the appropriate software driver.

---

### Drive Orientation

Locate the FireWire CD-RW drive on a stable, flat surface. You can use the drive in a horizontal or vertical orientation. In a horizontal orientation, the eject button should be located on the right side of the unit.

To position the drive in a vertical orientation, set the drive on the side that features four small rubber pads (the right side of the unit as you look at the front panel). The eject button should be located near the bottom of the unit.

---

### Connecting the CD-RW Drive to the Computer System

This section explains how to connect the TEAC FireWire CD-RW drive to an IBM PC compatible or Apple Macintosh computer that features a FireWire port.

Follow the steps below and refer to your computer's documentation for information specific to your system.

1. **For the initial installation, turn off your computer and all connected peripheral devices.**
2. **Depending on your operating system:**

**Macintosh users:** The IEEE 1394 port is integrated into your system. Skip to step 3.

**Windows users:** Install your FireWire/IEEE 1394 interface card (card not included with kit). Follow the instructions provided by the interface card manufacturer, then return to this procedure.

3. **Assemble the two-piece power cable/adaptor by connecting the power cable and the power adapter block.**

The power cable is shipped in two pieces: (a) one piece includes a male plug and a two-pin female connector; (b) the other piece includes an adapter block and a cylindrical four-pin male connector. Insert the two-pin female connector into the power adapter block. (Refer to Figure 4.)

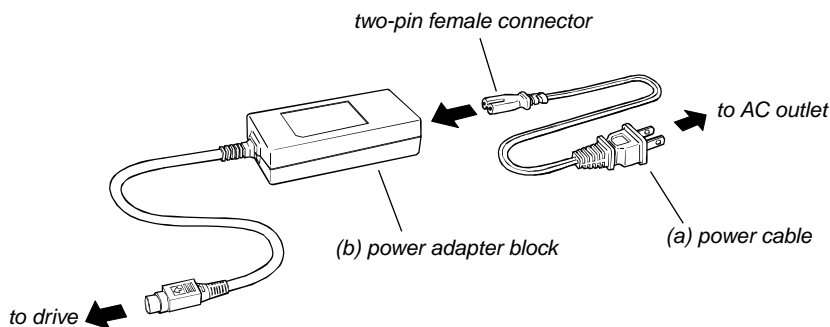


Figure 4. Connecting the Power Cable and Power Adapter Block

**4. Connect the power cable to the CD-RW drive.**

To do so, insert the circular four-pin male connector into the power input connector on the rear panel of the CD-RW drive. Refer to Figure 4 on page 8 and Figure 5 on page 9.

- 5. Insert the male plug of the power cable into an AC power outlet.**
- 6. Turn on the power to the FireWire CD-RW drive using the power switch on the rear panel.**
- 7. Start the computer.**
- 8. Insert the FireWire interface cable into either FireWire port on the rear panel of the CD-RW drive.**

Refer to Figure 5 on page 9.

- 9. Connect the other end of the FireWire interface cable to a FireWire port on your computer.**

***Note:** If you are connecting the cable to a FireWire hub, use a FireWire hub that features an AC Power adapter.*



### Connection Sequence

1. Connect power cable to drive.
2. Connect power cable to AC outlet.
3. Start computer.
4. Install device driver software.
5. Connect FireWire cable to drive.
6. Connect FireWire cable to computer.

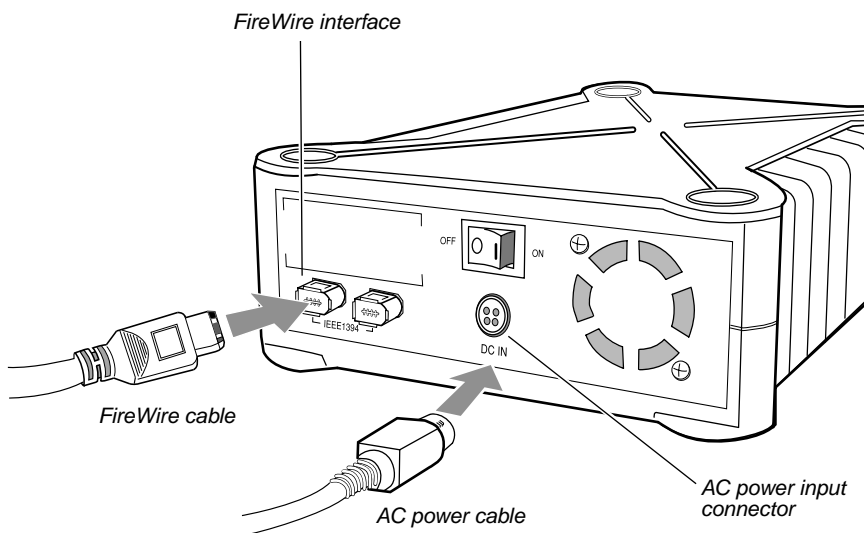


Figure 5. Connecting the Power Cable and FireWire Cable to the CD-RW Drive

### Notes:

**Windows 98SE and Mac Users:** You can plug the FireWire cable into your computer, or unplug it *from the computer* while the computer is running (this is called a “hot plug”). However, do not unplug the cable *from the drive* while the computer is running, or you may damage the drive or the computer.

**Windows Me/2000 Professional Users:** Before you disconnect the drive while the computer is running, you need to disable the connection by clicking on the Unplug icon in the Systray (see Figure 6):



Figure 6. Unplug Icon

**All Users:** Before you disconnect the cable from the computer's FireWire port, remove any inserted discs from the TEAC FireWire CD-RW drive.

Do not connect the FireWire drive while the computer is in sleep or suspend mode, or while the CD-RW drive is transferring data.

---

## Connecting to Audio Equipment

The FireWire CD-RW drive outputs a line-level audio signal from the headphone jack on the front panel. You can connect headphones or external powered-speakers to the headphone jack, which accepts a 3.5mm stereo mini-plug.

Alternatively, if your computer contains a sound card that features audio output jacks, you can connect the external powered-speakers to the audio connectors of the computer.

**Note:** *If you connect external powered-speakers to a sound card (on the rear panel of the PC), the system disables the sound output from the headphone jack on the front panel. In this case, connect the headphones to the headphone jack on the speaker system (if available).*

## **How to proceed with this installation:**

Depending on your operating system, you may continue with this installation as follows:

- ☐ **Mac users:** Continue with “Chapter 4. Installing Software on Macintosh Systems” on page 33.
- ☐ **Windows users:** Continue with “Installing the FireWire/IEEE 1394 Driver Update Module for Windows 98SE” on page 11 (below).

---

## **Installing the FireWire/IEEE 1394 Driver Update Module for Windows 98SE**

If you are using Windows 98SE, use the Update Module CD-ROM disc included with your kit to upgrade update the FireWire drivers.

- 1. Insert the TEAC 1394 Update Module CD-ROM disc into your computer’s CD-ROM drive.**
- 2. Click the Start button and select Run.**
- 3. Click the Browse button and select your CD-ROM drive.**
- 4. Select and run the file 242975usa8.exe from the English folder.**
- 5. Follow the menu-driven instructions to upgrade the Firewire/IEEE 1394 drivers in Windows 98SE.**
- 6. Restart your system.**

## High Speed Recording Guidelines (Enabling DMA)

To optimize your drive performance and avoid system lockup conflicts, especially when recording to CD-R disc at 12X speed, you need to exercise the following options **to enable DMA on your system.**

---

### Windows 2000

To enable DMA on your Windows 2000 system:

1. **Right-click** My Computer **and select** Properties.
2. **Click** Hardware, **then select** Device Manager.
3. **Click** IDE/ATA/ATAPI Controllers,.,
4. **Click** Secondary Controller Properties.
5. **Click** Advanced Settings.

See Figure 7.

6. **Click** Current Transfer Mode **and select** “DMA if available.”

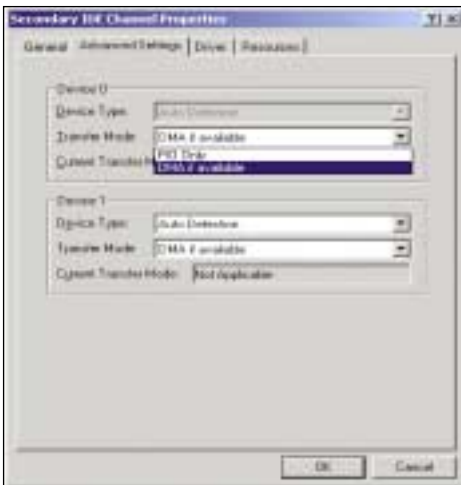


Figure 7. Secondary IDE Channel Properties Panel

---

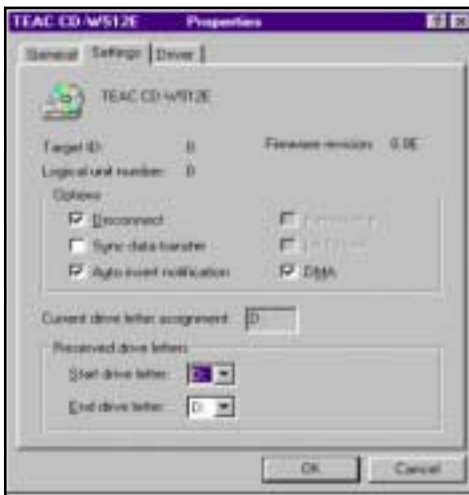
## Windows 98SE and Windows ME

To enable DMA on your Windows 98SE or ME system:

1. **Right-click** My Computer.
2. **Select** Properties.
3. **Click** Device Manager, **then double-click** the CD-ROM icon.
4. **Double-click** on your original CD-ROM drive reference.
5. **Click** the Settings tab.

See Figure 8 on page 13.

6. **Check** the DMA box.
7. **Click** OK.
8. **Repeat step 4** for your hard drive in the Disk Drives section.
9. **Close** the System Properties window.
10. **Restart** your system.



*Figure 8. Properties Panel*

---

## Windows Drive Detection

Windows 98SE, Me, and 2000 Professional will detect the TEAC CD-RW FireWire drive as a typical CD-ROM drive. For the drive to be recognized accordingly as a CD-RW drive, you must now install the Adaptec premastering software. Please continue with “Chapter 3. Installing Software on Windows Systems” on page 15.



---

## Chapter 3. Installing Software on Windows Systems

Please make sure that the TEAC FireWire CD-RW drive is properly installed as per the instructions in Chapter 2, beginning on page 7.

Before you can record data onto CD-R or CD-RW discs using your TEAC FireWire CD-RW Drive, you must first install Adaptec Pre-Mastering software onto your computer's hard disk.

The kit includes a CD-ROM that contains the following recording software applications for Windows 98SE, Windows Me, and Windows 2000-Professional systems.

☐ **Adaptec Easy CD Creator, Version 4.03a or higher**

Easy CD Creator is a full-featured premastering software application that enables you to create audio CDs and data CDs.

☐ **Adaptec DirectCD, Version 3.03a or higher**

DirectCD is a “drag & drop” software application that allows you to read and write to your CD-RW as if it were a standard floppy or removable hard drive. It also provides the tools necessary to format the media.

An installation procedure for these applications is provided in “Installing Easy CD Creator and DirectCD Software” on page 16.

## Installing Easy CD Creator and DirectCD Software

**Note:** Before you install any portion of the Adaptec software package, disable any applications that may be running in the background, including anti-virus software, screen savers, schedulers, etc. This will ensure the proper installation of the Adaptec software. To do so, press CTL-ALT-DEL on your keyboard. The Close Program panel will display a list of all current programs in memory (Figure 9). With the exception of “Explorer” and “Systray,” select each program, then click the End Task button. Then proceed with the installation below.

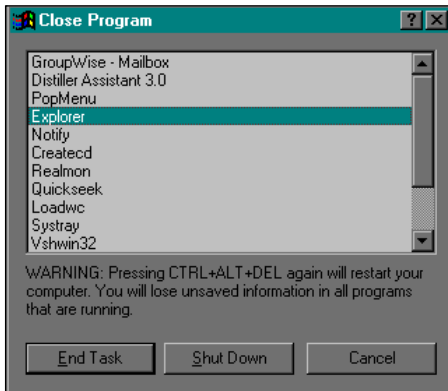


Figure 9. Close Program Panel

Follow the steps below to install Easy CD Creator and DirectCD software on your computer's hard disk. The installation procedure for each application is nearly identical.

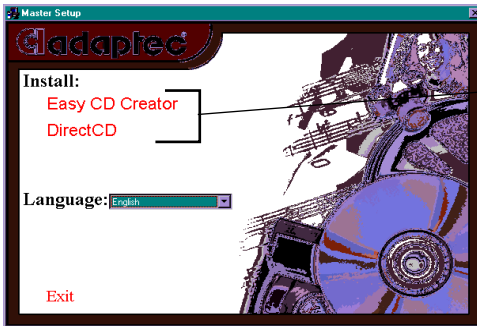
- 1. Insert the TEAC CD-RW software suite for Windows CD-ROM into your computer's CD-ROM drive or into the TEAC FireWire CD-RW drive.**

If the Autoplay function is enabled, the main installation panel (Figure 10) should appear on your desktop.

If the main installation panel does not appear on your desktop, double-click the My Computer icon, then double-click the icon for the CD-ROM drive.

The system displays the Adaptec Easy CD Creator/DirectCD main installation panel (Figure 10).





Select the program you wish to install using the left mouse button.

Figure 10. Adaptec Easy CD Creator/DirectCD Main Installation Panel

2. If you would like to select a language other than English for the installation procedure, click the Language: English button.

You can select one of the following languages: Dutch, English, French, Italian, Spanish, or Svenska. Click the OK button to return to the installation process.

3. On the main installation panel (Figure 10), click the left mouse button on the name of the application program you wish to install:

Select Easy CD Creator or DirectCD drag & drop software. The system begins to install the software and displays the following panel:

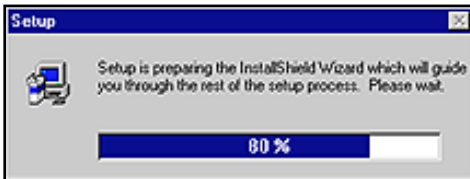
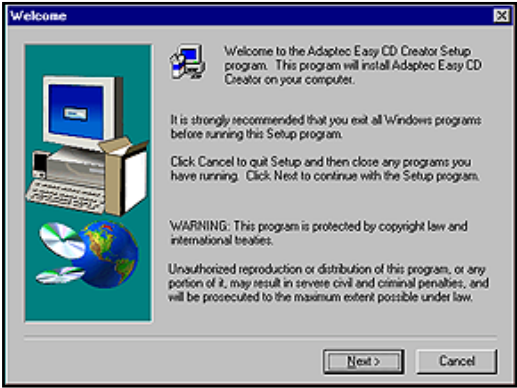


Figure 11. InstallShield Setup Panel

The system then displays a Welcome panel (Figure 12 on page 18) specific to the application you are installing:



*The Welcome panel is specific to the application you are installing.*

Figure 12. Welcome Panel

**Note:** When installing DirectCD, the system will display a message about CD-R/CD-RW support (see Figure 13). The TEAC CD-RW supports “packet writing.” Therefore, click the Yes button to install DirectCD.



Figure 13. DirectCD Installation Support Warning

4. **Close any Windows programs that may be running, then click the Next button.**

The system displays a Software License Agreement (Figure 14).



Figure 14. Software License Agreement Panel

5. **Please read the License Agreement and click the Yes button if you agree to its terms.**

The system displays the Choose Destination Location panel (Figure 15), which lets you specify a directory in which to install the application by clicking the Browse button and viewing the file structure. Alternatively, you can accept the default directory.

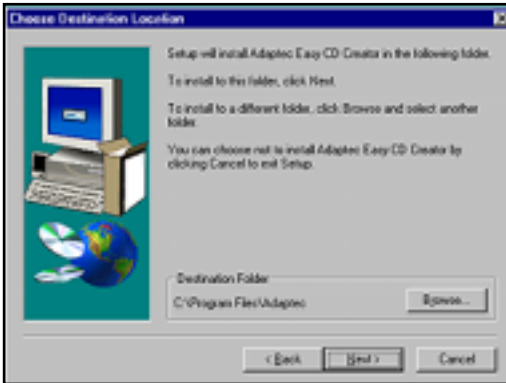


Figure 15. Choose Destination Location Panel

6. **Click Next.**

The system quickly displays a sequence of panels as the installation proceeds, pausing at the following Setup Complete panel (Figure 16):

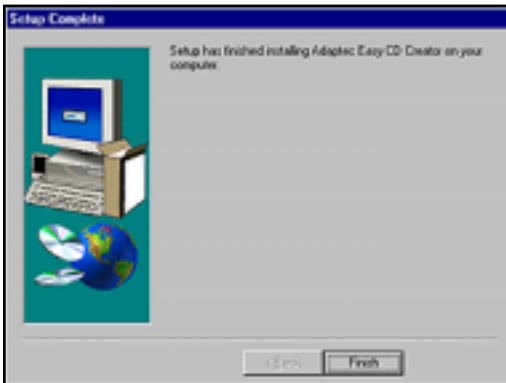


Figure 16. Setup Complete Panel

7. **Click the Finish button to conclude the setup.**

The system again displays the main installation panel (Figure 17 on page 20).

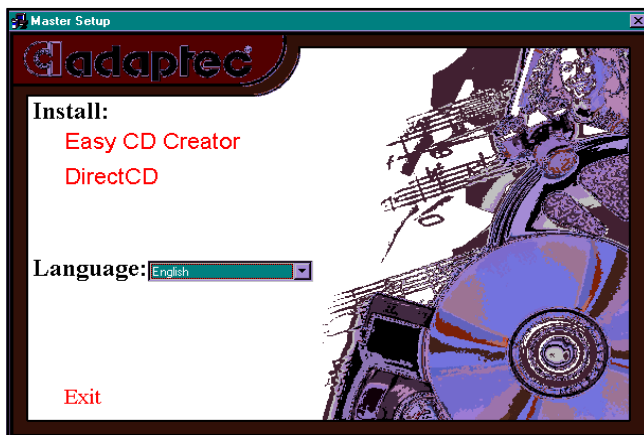


Figure 17. Main Installation Panel

**8. Do one of the following:**

- ☐ If you wish to continue and install another program (e.g., Easy CD Creator or DirectCD), return to Step 3 on page 17.
- ☐ If you have installed all programs, or if you wish to use the program you just installed immediately, click the Exit button.

The system displays the following Setup Complete panel (Figure 18):



Figure 18. Reboot System Request Panel

**9. Click the Finish button to restart your system.**

Once the system reboots, the application(s) you installed will be ready for use.

---

## About the Reference Guides, ReadMe Files, and Help Files

For detailed information on Easy CD Creator and DirectCD, refer to the Reference Guides (Acrobat PDF files) included on the CD-RW software suite CD-ROM. (Adobe Acrobat Reader 4.0 is included on the CD-ROM and loads automatically.)

Also, be certain to review the ReadMe files for Easy CD Creator and the Help files for DirectCD.

These PDF files comprise the user documentation for the applications. The files are entitled:

❑ *Adaptec Easy CD Creator Quick Reference Guide* (16 pages)

You can open this guide by selecting:

Start-->Programs-->Adaptec Easy CD Creator 4-->Quick Reference Guide

You can access the ReadMe file by selecting:

Start-->Programs-->Adaptec Easy CD Creator 4-->ReadMe

❑ *Adaptec DirectCD Reference Guide* (12 pages)

You can open this guide by selecting:

Start-->Programs-->Adaptec DirectCD -->Reference Guide

You can access the Help file by selecting:

Start-->Programs-->Adaptec DirectCD -->DirectCD Help

---

## About Online Registration

There is no need to register any portion of this kit. TEAC provides 100% support for the drive and the Adaptec software. Refer to “Appendix C. Technical Support” on page 42 if you wish to contact TEAC.

---

## About Web Checkup

Web Checkup is primarily a feature of the Easy CD Creator Deluxe Version software. The Adaptec software bundled with the TEAC CD-RW kit is a “standard” version. Therefore, the Web Checkup feature will not work unless you eventually upgrade to the Deluxe version. For now, you may disable this feature.

## Starting Easy CD Creator

To start Easy CD Creator, follow these steps:

1. **Click the left mouse button on the Windows Start icon, and select from the pop-up menu:** Programs-->Adaptec Easy CD Creator 4-->CreateCD.

The system displays the Welcome panel for Easy CD Creator (Figure 19), which enables you to create audio or data discs, as well as perform other related functions. (Alternatively, you can double-click the Create-CD shortcut on the desktop.)



Figure 19. Easy CD Creator Welcome Panel

---

## Using Easy CD Creator

The Welcome panel for Easy CD Creator enables you to:

- ☐ Create audio discs
- ☐ Create data discs
- ☐ Use CD Copier to copy discs (additional CD-ROM or DVD-ROM drive required)
- ☐ Use Jewel Case Creator to help you design and print jewel case cover art
- ☐ Upgrade to a deluxe version of Easy CD Creator

For information on using Easy CD Creator, refer to the Quick Reference Guide in PDF format on the CD-ROM or to the ReadMe file (for more information, see “About the Reference Guides, ReadMe Files, and Help Files” on page 21).

---

## CD Copier

This section explains how to use the CD Copier software.

---

### Copying (Duplicating) Discs Using CD Copier

**A note from TEAC and Adaptec:**

Easy CD Creator is designed to assist you in reproducing material for which you own the copyright or for which have obtained permission to copy from the copyright owner. Unless you own the copyright or have permission to copy from the copyright owner, you may be violating copyright law and subject to pay damages and other remedies. If you are uncertain about your rights, contact your legal advisor.

Also, check the end-user license on any commercial CDs to determine whether the license permits you to make copies. For example, some game disc licenses specifically exclude any kind of copying; it is therefore illegal to copy them for personal use.

**1. Select the following menu option:**

Start > Programs > Adaptec Easy CD Creator 4 > Features > CD Copier

(Alternatively, you can run CD Copier from the Create CD icon on your desktop.)

- 2. Insert the original data or audio CD from which you want to make copies into your CD-RW or CD-ROM drive.**
- 3. On the Source and Destination tab, select the drive containing the original CD in the COPY FROM drop-down box.**
- 4. Select the destination drive that contains the blank CD in the RECORD TO drop-down box.**

The destination drive refers to your CD-Recorder.

- 5. Click Copy to begin recording a copy of your CD.**

## Using your CD-RW Drive as Source and Target

1. **Select the CD-RW drive in both the COPY FROM and RECORD TO drop-down boxes.**
2. **Insert the disc from which you want to copy in the CD-RW drive.**
3. **Click Copy to begin the copy process.**

The program will write the disc information temporarily onto your hard drive. Once the information is on the hard drive, the program ejects the disc and prompts you to insert a blank disc.

4. **Click the Retry button to begin recording to the blank disc.**

**Note:** Please bear in mind that you need at least 800MB of free space on your hard disk to write the information from the source disc. The system deletes this information from your hard drive after the process is complete.

---

## Creating a CD from a CD Image in Easy CD Creator

To create a data CD from a CD image, you first need to create the CD image, then record the CD image to a disc. You can create the image from your CD-ROM drive or CD-RW drive.

The process of creating a CD from a CD image may save you time when you wish to create multiple CD copies of the same information. This process enables you to write the CD image once to your hard disk, then record it several times to different discs.

---

## Creating an Image File

1. **Select the following menu option:**

Start > Programs > Adaptec Easy CD Creator 4 > Features > Easy CD Creator

(Alternatively, you can run Easy CD Creator from the Create CD icon in the desktop, and select the type of disc you want to create (e.g., data, audio, etc.).

2. **Insert a blank CD into the drive you want to use as source.**
3. **Click the *small arrow* next to the New button on the toolbar.**
4. **Select the type of disc you want to create from the drop-down list (audio, data, etc.).**



5. **In the Explorer section, select the data file, folder, or disc from which you want to record, then click the Add button. Repeat this step until the Data CD Layout contains all the information that you want to record.**
6. **From the File menu, select Create CD Image.**
7. **Type a filename for the image file.**

The system creates the image file in the My documents folder by default. You can, however, select a different location in which to save the file.

8. **In the Save As Type box, select CD Image Files (\*.cif)**
9. **Click Save.**

---

#### **Creating a CD from the CD Image File:**

1. **Insert a blank disc into the CD-RW drive.**
2. **From the File menu, select Create CD from CD Image.**
3. **Select the image file (\*.cif file) you just created, and click Open.**

The system displays the CD Creation Setup dialog box.

4. **If necessary, change the CD Creation Setup settings and click OK.**

---

#### **Creating an Audio CD from Multiple Discs**

1. **Select the following menu option:**

Start > Programs > Adaptec Easy CD Creator 4 > Features > Easy CD Creator  
(Alternatively, you can run Easy CD Creator from the Create CD icon on the desktop, select AUDIO, then AUDIO CD.)

2. **Place the discs from which you want to copy in the desired order from disc 1 to disc  $n$ , where  $n$  is the last disc from which you want to record.**
3. **Insert the first disc (which we will call disc 1) in your CD-ROM drive.**
4. **Select the tracks you want to record from disc 1, then click the ADD button to list those tracks in the CD Layout.**
5. **Remove disc 1, then insert disc 2.**
6. **Repeat steps 3 to 5 until you do the same with disc  $n$ .**
7. **Remove disc  $n$ , then insert disc 1.**
8. **Insert a blank CD-R disc in your CD-RW drive.**
9. **Click the Create CD button and change the CD Creation Setup if necessary.**

The program prompts you to remove disc 1 and insert disc 2 to continue recording.

10. **Follow the instructions to record the remainder of your disc.**

## Extracting Audio Tracks to Wave Files

### 1. Select the following menu option:

Start > Programs > Adaptec Easy CD Creator 4 > Features > Easy CD Creator

(Alternatively, you can run Easy CD Creator from the Create CD icon in the desktop, select AUDIO, then AUDIO CD.)

### 2. Insert your original audio disc in either drive.

### 3. In the Explorer section, select the drive with audio disc.

The system lists all tracks on the right side of the screen.

### 4. Right-click on the track you want to convert to a wave file.

### 5. Select the option to Extract to File.

By default, the system saves the file in the My Documents folder. You can always change the location to save the files.

### 6. Key in a name for the file in the file name box.

### 7. In the Save As Type box, select WAV file (\*.WAV).

### 8. In the Format box, select PCM 44,100 Hz, 16 Bit, Stereo (CD quality).

### 9. Click Save.

---

## Creating a Music CD from WAV, MP3, and WMA files

Easy CD Creator enables you to create a music CD that can be played on your home or car stereo CD player, and on every computer that has a CD-ROM or CD-Recorder drive. Unlike a data CD, a music CD is used for playing back music and not for data storage.

To create a music CD:

### 1. Select the following menu option:

Start > Programs > Adaptec Easy CD Creator 4 > Features > Easy CD Creator

### 2. From the File menu, select New CD Layout, then Audio CD.

### 3. Insert a blank CD into your CD-Recorder (the destination drive).

### 4. To add WAV, MP3, and WMA files to the music CD layout:

☐ In the Explorer section on the Audio Layout, select the folder where your files are located. A list of all audio files in the folder appears on the right side Source section.

☐ Select the audio file (hold down the Ctrl or Shift key to select multiple files) in the Source section, then click the + Add button on the tool bar. The system adds the file to the music CD layout.

Note: You can add any combination of music tracks, WAV, MP3, or WMA files to a music CD project. Up to 99 tracks and files, or up to 650 MB (74-minute CD) or 700 MB (80-minute CD) of tracks and files can be added to a music CD project.

**5. Click the Create CD button on the tool bar.**

The system displays the CD Creation Setup dialog box.

- 6. (Optional) Click the Advanced button to view audio recording options.**
- 7. (Optional) Click the Help button to view detailed option explanations.**
- 8. Click OK to start the recording session.**

## Starting DirectCD

To start DirectCD, follow these steps:

1. **Click the left mouse button on the Windows Start icon, and select from the pop-up menu:** Programs-->Adaptec DirectCD-->Adaptec DirectCD Wizard. (Alternatively, you can double-click the Create-CD shortcut on the desktop, click the Data button, and then click DirectCD.)

The system displays an introductory screen for DirectCD Wizard (Figure 20), which will guide you through:

- ☐ Checking the status of a disc in the CD-RW drive
- ☐ Preparing a CD-R or CD-RW disc for reading or writing
- ☐ Managing the final data when ejecting a DirectCD disc



Figure 20. DirectCD Wizard Panel

## Using DirectCD

For information on using DirectCD, refer to the following sections and to the user documentation in PDF format on the CD-ROM or refer to the Help file (see “About the Reference Guides, ReadMe Files, and Help Files” on page 21).

You may also access Help information by clicking the Help button on the DirectCD Wizard panel (Figure 20).

---

### Formatting a Disc with Direct CD

#### 1. **Insert a blank CD-R or CD-RW disc in the drive.**

After a few seconds, the system displays the following message: “Please select the type of CD you wish to create.”

#### 2. **Click DATA, then DIRECTCD.**

If nothing happens on the screen after about 15 seconds, click the DirectCD icon in the systray (right bottom corner in the task bar).

(Alternatively, you can run DirectCD from the Create CD icon in your desktop, or open the program using Start > Programs > Adaptec DirectCD > DirectCD Wizard.)

The system displays the DirectCD Wizard, which guides you step-by-step in preparing the CD so you may write data directly to it.

#### 3. **Click Next.**

The system displays the Format Disc window. If you are formatting a CD-RW disc that has been formatted before, you can select either Quick format or Full format.

#### 4. **Click Next.**

The system displays the Name Your Disc window.

#### 5. **Type a name for your disc in the Name Your Disc window.**

The name can be up to 11 characters in length.

#### 6. **Select the Compression option if you are using a CD-RW disc and you want to enable data compression on the disc.**

#### 7. **Click Finish.**

The system begins to format the disc. It displays the DirectCD Disc Ready window when disc formatting is complete.

#### 8. **Click OK.**

The DirectCD disc is ready for writing.

## Ejecting a DirectCD Disc (ISO 9660 Closed Session Format)

If you want your CD-R DirectCD disc to be readable on other computers that use standard CD-ROM drives, you must format the disc as an ISO 9660 closed session disc by specifying an option during the disc eject function.

To do so, follow these steps:

1. **Right-click the CD icon on the Windows taskbar.**
2. **Select Properties from the drop-down list box.**
3. **Click the DirectCD Wizard tab.**
4. **Select the Enable standard CD-ROM compatibility Eject option.**
5. **Click APPLY, then click OK.**
6. **Right-click the CD icon on the Windows taskbar.**
7. **Select the appropriate option:**
  - ☐ To leave the disc as it is so that it can be read and written through drive letter access in the future, or...
  - ☐ Organize the disc so that it can be read in most standard CD-ROM drives.
8. **Click Finish.**

**Note:** To make the disc readable on a standard CD-ROM drive, the disc is closed as an ISO 9660 format. This format information requires 22 MB of space on the disc for the first session, and 13MB for each additional session. Only CD-R discs can be closed as an ISO 9660 format. *CD-RW discs do not support the ISO format.*

When DirectCD finishes closing the disc to an ISO 9660 format, the disc is ejected from the drive and, if the Display Disc Ejected notification option is selected in the DirectCD Wizard Options, the system displays the Disc Ejected message box.

## Writing Additional Data to a DirectCD Disc

Once you format a CD-R or CD-RW disc, you can add more data to it until the disc is full. To do so, follow these steps:

### 1. Insert the DirectCD disc into your CD-R or CD-RW drive.

After a few moments the system displays the DirectCD Disc Ready window.

Note: To be able to re-write to CD-R discs, you must specify the disc as rewritable. To do so, right-click the CD icon on the Windows taskbar, then click the Make Writable option.

### 2. Click OK and continue writing more data to your CD.

---

## Uninstalling Programs

- ☐ To uninstall Easy CD Creator, select:

Start-->Programs-->Adaptec Easy CD Creator 4-->Uninstall.

- ☐ To uninstall DirectCD, select:

Start-->Programs-->Adaptec DirectCD-->Uninstall DirectCD.

The system displays the Control Panels window. Use the Add/Remove Programs utility. For additional information, refer to your Windows documentation.

- ☐ You can uninstall both programs from the Add/Remove Program object in the Control Panel.





---

## Chapter 4. Installing Software on Macintosh Systems

Please make sure that the TEAC FireWire CD-RW drive is properly installed as per the instructions in Chapter 2, beginning on page 7.

Before you can record data onto CD-R or CD-RW discs using your TEAC CD-RW Drive, you must first install TEAC/*Adaptec Toast Software for Macintosh* onto your Macintosh computer's hard disk.

The kit includes a CD-ROM that contains the *Adaptec Toast* recording software for Macintosh systems. *Toast* is a full-featured premastering software application that enables you to create audio and data CD-R and CD-RW discs.

## Installing Toast Software

**Note:** Before you install Toast, disable any applications that may be running in the background, including anti-virus software, screen savers, schedulers, etc. This will ensure the proper installation of the Adaptec software.

Follow the steps below to install Toast software on your Macintosh computer's hard disk.

1. **Insert the *TEAC/Adaptec Toast Software for Macintosh* CD-ROM into your computer's CD-ROM drive.**

After the system loads the disc, it displays the Adaptec Toast 4.1.2 icon on the Macintosh desktop (Figure 21).



Figure 21. Adaptec Toast Software Icon

2. **Double-click the Adaptec Toast icon.**

The system displays the Adaptec Toast 4.1.2 main installation panel (Figure 22).

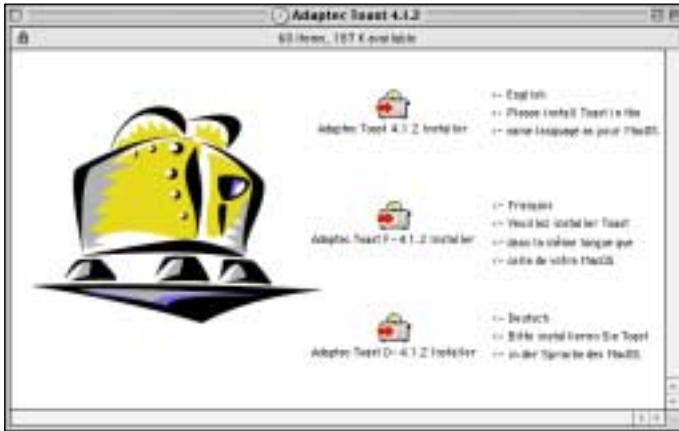


Figure 22. Toast Main Installation Panel

3. **Double-click the installer in your desired language.**

The system displays a continuation panel (Figure 23 on page 35).



Figure 23. Continuation Panel

**4. Click the Continue button.**

Toast 4.1.2 installs an English language version of the software.

Toast-F installs a French (Français) version; Toast-D installs a German (Deutsch) version. The system then displays a license agreement.

**5. Please read the License Agreement, and if you agree to its terms, click the Accept button.**

The system displays a Read Me/Registration panel (Figure 24).



Figure 24. Read Me/Registration Panel

**6. Click the Continue button.**

The system displays the Toast 4.1.2 Installer panel (Figure 25).

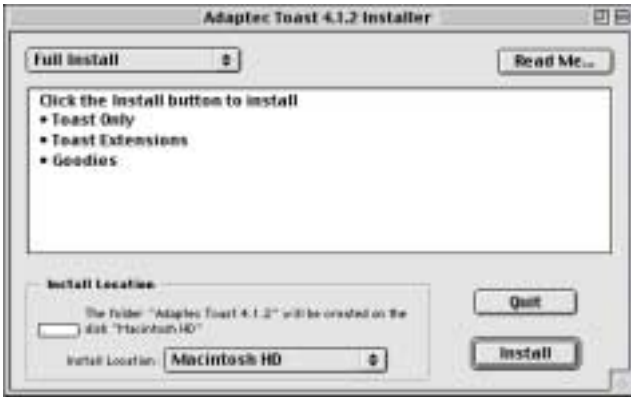


Figure 25. Toast 4.1.2 Installer Panel

- 7. Select the Full Install option by using the pull-down menu in the upper-right corner of the panel.**
- 8. If desired, specify a location on the hard drive as the installation destination by using the Install Location pull-down menu.**
- 9. Click the Install button.**

The system begins to install the software onto your computer's hard drive while displaying the following panel (Figure 26):

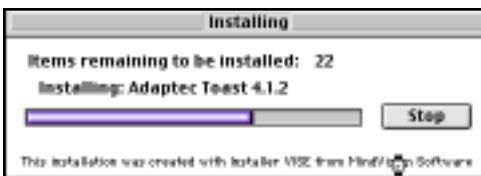


Figure 26. Installing Panel

If the installation is successful, the system then displays an Installation successful panel (Figure 27).

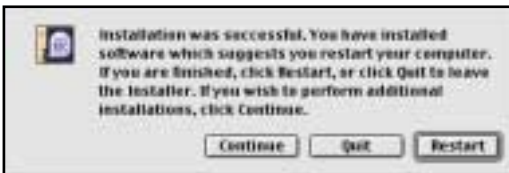


Figure 27. Installation Successful Panel

**10. Click the Quit button to conclude the installation.**

## Starting Toast

To start Toast, follow these steps:

- 1. Double-click the Toast 4.1.2 folder icon.**

The system opens the Toast 4.1.2 folder (Figure 28 on page 37).

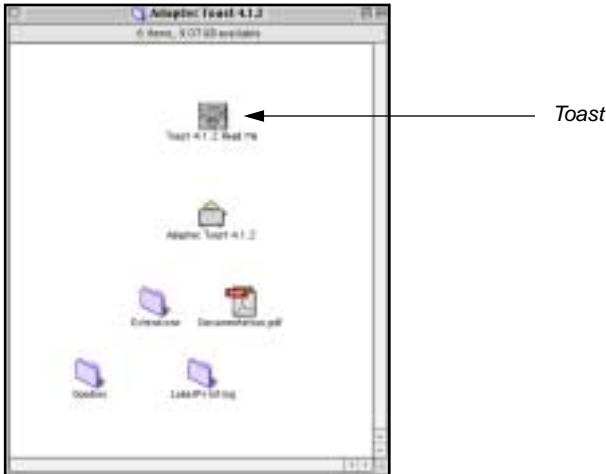


Figure 28. Toast Folder

- 2. Double-click the Adaptec Toast 4.1.2 application icon.**

The system loads the Toast software and displays the main panel (Figure 29).



Figure 29. Toast Main Panel

For information on using Toast, refer to the user's guide in the documentation.pdf file in the Toast 4.1.2 folder.



# Appendix A. About CD-R and CD-RW Discs

This appendix explains how to handle, load, and eject CD-R and CD-RW discs. It also lists recommended media and supported disc formats.

## Handling Discs

- ❑ Handle compact discs only by their edges to avoid getting fingerprints on the surface. Do not touch the disc’s data surface (unlabeled side).
- ❑ Do not place discs in direct sunlight, or in locations subject to high humidity, high temperatures, or dusty conditions.
- ❑ If cleaning the disc becomes necessary (erratic operation or visible dust or smudges), gently wipe the surface of the disc from the center to the outside edge. Do not use benzene, alcohol, thinner, or other solvents.

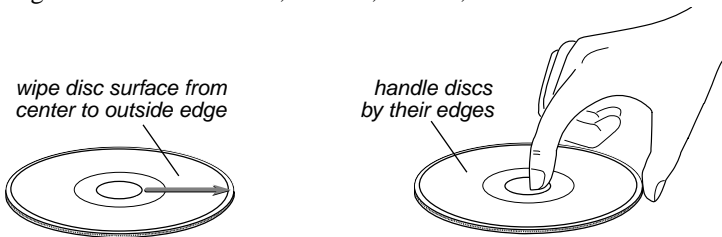


Figure 30. How to Handle Compact Discs (CD-R and CD-RW)

## Recommended Media

One blank TEAC CD-R disc and one blank CD-RW rewritable disc are included in the package with your CD-RW.

For optimal performance, make sure to use 74 or 80-minute CD-R media rated for 12X speed recording. CD-RW media should be “high-speed” rated (usually 4X to 10X speed). Use media from TEAC or the following manufacturers:

Disc Type	Manufacturer
CD-R	Taiyo Yuden
	Mitsui Toatsu Chemical
	Mitsubishi (Verbatim)
	Ricoh
	TDK Electronics
	Kodak
	Fuji Film
	Hitachi (Maxell)
	Pioneer
	Sony
	Maxell
	PVC

Disc Type	Manufacturer
CD-RW	Mitsubishi (Verbatim)
	Ricoh

**Note:** You may purchase additional TEAC media online at [www.shopteac.com](http://www.shopteac.com).

---

## Disc Formats

The TEAC FireWire CD-RW drive supports the following disc formats:

Disc Format	Data Capacity
CD-DA	74 or 80 minutes
CD-ROM Mode 1	650MB or 700MB
CD-ROM XA Mode 2 (Form 1)	650MB or 700MB
CD-ROM XA Mode 2 (Form 2)	738MB or 794MB
CD-R	650MB or 700MB
CD-RW	650MB or 700MB
CD-I	650MB or 700MB
Video-CD	650MB or 700MB
CD Extra/CD-Plus	650MB or 700MB
CD-TEXT	650MB or 700MB
Multi-session Photo CD	650MB or 700MB

---

## Loading and Ejecting Discs

To load a disc, first open the disc tray by pressing the Eject button on the front of the drive. Place the disc on the disc tray with its label side facing up. Then press the Eject button again to retract the disc tray back into the drive.

To eject a disc, press the Eject button on the front of the drive to extend the disc tray (see Figure 31). Remove the disc from the disc tray and place it in its protective case. Press the Eject button again to retract the disc tray back into the drive.

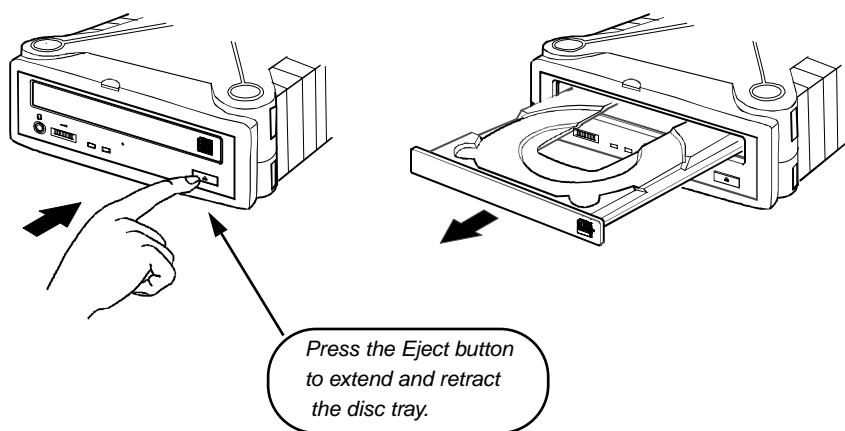


Figure 31. Ejecting the Disc Tray



---

## Appendix B. Specifications

The following table lists the product specifications for TEAC FireWire CD-RW drive.

<b>Model</b>	<b>CD-RW5120i</b>
<i>Interface</i>	<i>FireWire/IEEE 1394</i>
<i>Transfer Rate</i>	<i>Read: 32X maximum (4800KBps) Write to CD-R: 12X (1800KBps) Write or Rewrite to CD-RW: 10X speed (1,500KBps)</i>
<i>Access Time</i>	<i>85 msec (1/3 Stroke)</i>
<i>Buffer Size</i>	<i>4MB</i>
<i>Write Methods</i>	<i>Track at Once; Disk at Once; Multi-Session; Incremental</i>
<i>Disc Types</i>	<i>8cm/12cm; Audio CD; CD-ROM Mode-1; Mode-2 (Form1, Form2); CD-ROM XA; CD-R; CD-RW; Video-CD; CD Extra/CD-Plus; CD-I; CD-DA; CD-ROM; CD-TEXT.</i>
<i>Write Verification</i>	<i>Running Optimum Power Control to dynamically adjust laser write power</i>
<i>Logical Recording Format</i>	<i>IS09660; UDF &amp; CDR-FS Packet Write</i>
<i>Disc Loading</i>	<i>Power Tray (caddy not required)</i>
<i>Front Panel</i>	<i>Built-in Headphone Jack, Volume Control Knob, and Power Eject Button</i>
<i>MTBF</i>	<i>100,000 POH</i>
<i>Dimensions</i>	<i>6.48"(W) x 2.00"(H) x 11.25"(D)</i>
<i>Weight</i>	<i>3.53 lbs</i>
<i>Power Requirement</i>	<i>120VAC</i>
<i>Analog Audio Headphone Line-Out</i>	<i>0.65 ± 0.3Vrms at 32Ω 0.78 ± 0.3Vrms at 47KΩ</i>
<i>Headphone Jack</i>	<i>3.5mm diameter stereo mini-headphone jack</i>
<i>Installation</i>	<i>(External) Horizontal, plus or minus 10°</i>
<i>Operating Temperature</i>	<i>5° C to 40° C (41° F to 104° F)</i>
<i>Storage Temperature</i>	<i>-30° C to 60° C (-22° F to 140° F)</i>
<i>Operating Humidity</i>	<i>20% to 80% (non-condensing)</i>
<i>Storage Humidity</i>	<i>10% to 80% (non-condensing)</i>
<i>Safety Standards</i>	<i>UL</i>

---

## Appendix C. Technical Support

For technical support, please contact the TEAC Service and Support Center:

### **North America**

TEAC America, Inc. (USA)

Technical Support

Telephone: (323) 727-4860 • Fax: (323) 869-8751

Monday - Friday 8:00 a.m. - 5:00 pm

<http://www.teac.com/dspd>

E-mail: [dsptsg@teac.com](mailto:dsptsg@teac.com)



**TEAC America, Inc.**

7733 Telegraph Road

Montebello, CA 90640

Telephone: (323) 727-4860 • Fax: (323) 869-8751