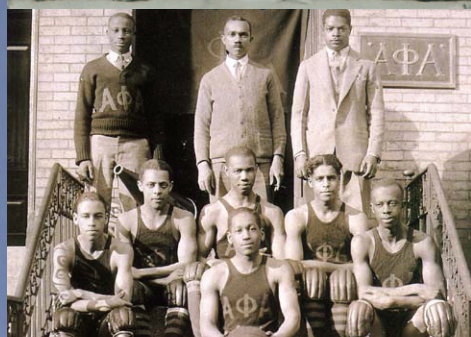


# Cornell University

Fraternity & Sorority Advisory Council  
Annual Report  
2004 - 2005



since 1868





# CREED



2004-05 Interfraternity, MGLC, and Panhellenic Executive Council Officers

## Cornell University Fraternity and Sorority Creed

*Adopted Fall 1999*

**W**e, the Fraternity and Sorority system of Cornell University, exist to cultivate the intellectual, social and ethical development of our members in an environment of freedom with responsibility. As such, we reaffirm our vision and values that serve as the foundation in guiding us in our personal and academic lives.

We commit to scholarship and learning foremost in our daily activities, and we dedicate ourselves to leadership and personal growth as we aspire to enhance the surrounding community through strong leadership.

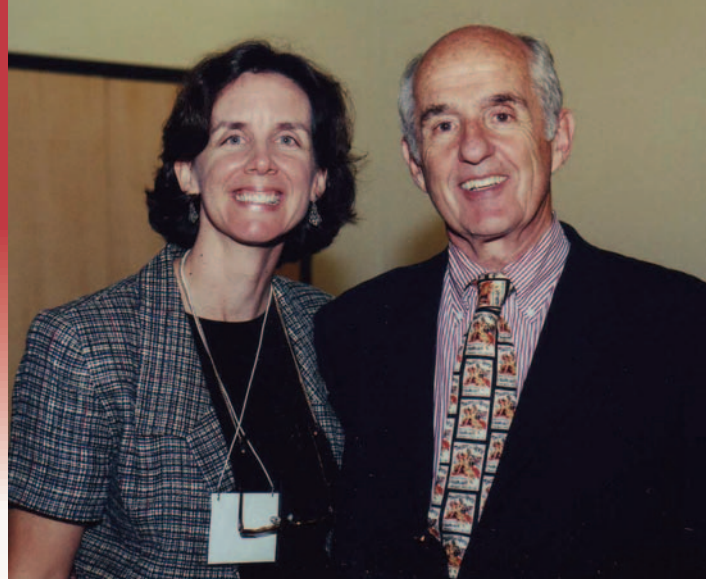
We strive to emphasize teamwork and commitment in achieving our goals, and we aim to help others through philanthropy and service.

We promote determination and self-confidence through programming that encourages mutual support and respect for our peers, our university, and the greater community.

We aim to foster diversity and appreciation of differences among all members of the Greek system, and we strive to set a standard and support others as they work toward this goal.

We develop bonds of friendship through tradition that strengthens our chapters, our university, and our community.

From the  
Office of Fraternity and Sorority Affairs



Suzy Nelson  
Robert G. Engel Associate Dean of Students  
Kappa Alpha Theta Fraternity

Anthony B. Cashen '57, MBA '58  
Chair, Fraternity and Sorority Advisory Council  
Delta Upsilon Fraternity

## Dear members and friends of the Cornell Greek community:

The close of the 2004-05 academic year marks a decade of progress for the fraternity and sorority community at Cornell. Together, students, alumni, faculty and staff have built one of the strongest and largest fraternity and sorority systems in the country. Our past achievements and future aspirations reflect the talent and creativity of those dedicated to enhancing the Greek experience. This year's annual report is evidence of how a decade-long effort to revitalize the fraternity and sorority experience is producing results.

Our Greek system is acclaimed regionally and nationally. This year the Interfraternity Council received eight out of eight awards at the regional Northeast Greek Leadership Conference for fraternities and sororities in Philadelphia, PA, and our Panhellenic Association enjoyed a clean sweep as well in all award categories. Our council leadership was further recognized for their tri-council governance structure, where students from the three councils (Multicultural Greek Letter Council, Interfraternity Council and Panhellenic Association) work cooperatively to plan all educational programs and events for the Greek system. The GPA for men's groups has improved from 3.0 to 3.2 over the last five years, and the Greek female GPA is 3.4 overall. Recruitment numbers have also improved. The Multicultural Greek Letter Council has seen the most growth in number of organizations that have expanded to campus, growing from four in 1998 to 15 member organizations, with a total membership of approximately 125. The IFC groups have shown considerable gain in membership, with an increase of 20% in new membership over the last five years (498 in 2000 to 617 in 2005). Finally, despite the loss of two Panhellenic Association chapters due to low chapter size, the system added a new group last year, Alpha Xi Delta, and maintained recruitment numbers. In 2000, Panhel recruited 436 members and 404 in 2005. Our students continue to give back to the Ithaca community. This year, our Greek members raised over \$165,000 for philanthropic causes and contributed 17,000 hours of community service and 4,700 hours of advocacy work.

Even with our amazing success, there is more work to be done. The Residential Initiative has opened doors for greater campus-wide support of the Greek system, but more importantly, it has caused student leaders and alumni to raise their expectations for their chapter's performance. Thanks to the outstanding efforts of nine pilot chapters and their alumni over the last two years, the Creating Chapters of Excellence initiative (the Greek compliment to the Residential Initiative) has evolved into a program that offers incentives and guidance to participating organizations. Our goal is simple: we aim to work more intensely with chapters in achieving higher performance.

The 2004-05 annual report includes several updates related to our successes and challenges. As our alumni and friends are vital to this vision, we deeply appreciate your support in creating an exceptional fraternity and sorority experience for our members.

**“Our past achievements and future aspirations  
reflect the talent and creativity of those dedicated  
to enhancing the Greek experience.”**



# Table of Contents

<b>3</b>	<b>Creating Chapters of Excellence Pilot Program</b>	<b>18</b>	<b>Appendices</b>
		A	Fraternity and Sorority Advisory Council Membership Roster
		B	Office of Fraternity and Sorority Affairs Staff
		C	Interfraternity Council Executive Officers and Chapter Presidents
		D	Multicultural Greek Letter Council and Panhellenic Association Executive Officers and Chapter Presidents
		E	Summary of Chapter Evaluations
		F	Fraternity and Sorority Statistics
		G	Fraternity and Sorority Academic Data
		H	Fraternity and Sorority Community Service/Philanthropy
		I	Judicial Update
<b>4</b>	<b>Leadership Development and Training</b>		
	Cross-Council Events and Programming		
	Interfraternity Council Events and Programming		
	Multicultural Greek Letter Council Events and Programming		
	Panhellenic Association Events and Programming		
	Order of Omega		
<b>7</b>	<b>Membership and Recruitment Summary</b>		
	Interfraternity Council		
	Multicultural Greek Letter Council		
	Panhellenic Association		
<b>8</b>	<b>Fraternity and Sorority Self Governance</b>		
	Tri-Council Meetings		
	Revising the Strategic Plan		
	Social Guidelines		
	Judicial System Summary		
	Hazing Website		
<b>9</b>	<b>Finances and Facility Improvements</b>		
	Fire Safety Systems		
	University-Owned Chapter Facilities		
	Kitchen Safety and Sanitation Program		
	End-of-Year Condition Report Program		
	Financial Summary and Facilities Update		
	Privately-Owned Chapter Facilities		
	Financial Summary and Facilities Update		
<b>12</b>	<b>Alumni Affairs and Development</b>		
	Alumni Relations Activities		
	Alumni Organizations		
	Alumni Events		
	Alumni Resources		
	Fund-raising Support		
<b>14</b>	<b>Undergraduate, Alumni, and Faculty Recognition</b>		
	Chapter Recognition		
	Chapter Awards		
	Individual Accomplishments		
	Faculty Achievements		
	Dyson Undergraduate Scholarships		

# EXCELLENCE

## Creating Chapters of Excellence Pilot Program (CCE)

In 2001 the Fraternity and Sorority Residential Initiative Committee convened to construct a model that would support the Greek system's participation in the Residential Initiative. In keeping with the mission to bring greater chapter depth, purpose, and value to the fraternity and sorority experience, the committee created a two-year pilot program known as Creating Chapters of Excellence. Participating chapters have assisted in raising funds for the pilot program. Each chapter contributed between \$3,000 and \$30,000 over the two-year period toward the overall \$250,000 cost of the program.

In the fall of 2003, men and women from nine different organizations began the process of executing the pilot program. Those chapters include: Chi Psi, Phi Gamma Delta, Sigma Alpha Epsilon, Sigma Phi Society, and Sigma Pi (Interfraternity Council); Alpha Kappa Alpha and Pi Delta Psi (Multicultural Greek Letter Council); and Kappa Delta, and Kappa Kappa Gamma (Panhellenic Association).

In its second year as a pilot program, Creating Chapters of Excellence continued to raise the standards of fraternity and sorority performance, operations, and programming. At its heart, Creating Chapters of Excellence is a chapter-based model that guides individual chapters in reaching their full potential as self-governed, mission-driven organizations. It does so by focusing on the following components: providing quality programs and services to undergraduate members; mentoring with alumni, faculty, and staff; enhancing leadership training and support of chapter officers; offering greater support with facility management issues; and building a sense of community within the participating chapters.

This 2004-05 academic year alone, these nine organizations took part in over 38 programs, recruited and interacted with 7 Faculty Fellows, attended over 14 chapter officer roundtables, and worked to enhance facility management issues within their own properties.

Through Creating Chapters of Excellence, chapter members were able to meet and interact with CNN News Anchor Aaron Brown and Democratic Party Chairman Howard Dean—both guests of the university. Chapters were able to travel to New York City for career and networking seminars organized by their alumni. In addition, this past year, chapters encouraged greater political awareness by hosting a series of debates and discussions during the 2004 presidential election.

While the two-year pilot phase is complete, given our successes and challenges, the participating chapters and the Office of Fraternity and Sorority Affairs have modified elements and the program has been extended to five new organizations, for a total of fourteen participating chapters for the 2005-06 year.

### 2005-06 Participating Chapters:

Alpha Epsilon Phi  
Alpha Kappa Alpha  
Chi Phi  
Chi Psi  
Kappa Delta  
Kappa Kappa Gamma  
Lambda Chi Alpha  
Lambda Pi Chi  
Phi Gamma Delta  
Phi Kappa Tau  
Pi Delta Psi  
Sigma Alpha Epsilon  
Sigma Phi Society  
Sigma Pi



Fraternity and Sorority members take a moment to pose with Howard Dean at a reception held in his honor.



Fraternity and Sorority members have an in-depth conversation with CNN Anchor Aaron Brown during his first-ever visit to a fraternity.

# LEADERSHIP

## Leadership Development and Training

Membership in the fraternity and sorority community is divided among three councils, the Interfraternity Council (IFC), the Multicultural Greek Letter Council (MGLC), and the Panhellenic Association (PA). Although each council has individual goals and activities, there are shared opportunities for educational programming. The following section highlights several cross-council leadership and training initiatives, as well as a multitude of accomplishments from each governing body.

### Cross-Council Events and Programming

#### Community Service and Philanthropy

This year the tri-council community service and philanthropy projects included College Town Clean Up, two blood drives, and the Big Red Relief Benefit Concert.

#### Presidents' Retreat

In August 2004, chapter presidents attended the annual retreat held at the Fountainbleau Inn. Each student received a copy of James Kouzes and Barry Posner's book, *The Leadership Challenge Handbook*, and was encouraged to examine the "Five Principles of Exemplary Leadership." They also identified important community priorities and ways to address them during the academic year.

#### Emerging Leaders' Retreat

In October 2004, 38 up-and-coming leaders participated in our annual leadership development retreat at the White Eagle Conference Center. The year's theme was "Creating Visionary Leaders through CommUnity." Student facilitators and staff worked to develop the leadership and communication skills of sophomore and junior representatives from more than 20 organizations. The Highland Consultant Group facilitated a Myers-Briggs Type Indicator session in which participants were able to learn about their personality preferences and understand how these preferences apply to leadership roles. **Tiffany Brutus '07** (Omega Phi Beta), **Katie Button '05** (Pi Beta Phi), **Jeff Massa '05** (Sigma Alpha Epsilon), and **Stephanie Wedekind '05** (Delta Delta Delta) were the student facilitators.

#### Faculty Appreciation Reception

This annual reception recognizes faculty members who truly inspire our students. Faculty members were recognized from each of the seven undergraduate colleges and schools, and President **Jeffrey Lehman '77** provided the keynote address. **Katie Button '05** (Pi Beta Phi), **Jason Lee '05** (Pi Delta Psi), and **David Rimshnick '05** (Acacia) served as the program's steering committee.

#### A.D. White Leadership Conference

The Annual A.D. White Leadership Conference was held in February at the Statler Hotel. The student steering committee was chaired by **Katie Button '05** (Pi Beta Phi), **Jason Lee '05** (Pi

Delta Psi), and **Devan Musser '05** (Sigma Pi). Over 350 chapter officers, alumni, faculty and friends of the community attended the conference. **Dr. Ken Blanchard '61** (Phi Gamma Delta), co-author of *The One Minute Manager* and **Dr. Margorie Blanchard '62** (Kappa Kappa Gamma), co-founder of Blanchard for Others, gave the keynote address.

#### Northeast Greek Leadership Conference

Our Greek students facilitated two conference sessions at the 2005 Northeast Greek Leadership Association Conference held in Pittsburgh, PA. "Tri-Council Unity-Myth or Reality?" was facilitated by **Janie Cisneros '05** (Lambda Pi Chi), **Jeff Massa '05** (Sigma Alpha Epsilon), and **Stephanie Wedekind '05** (Delta Delta Delta), and "Reality Check: Safety in Our Community" was facilitated by **Katie Button '05** (Pi Beta Phi), **Jon Harsch '05** (Sigma Phi Epsilon), and **Devan Musser '05** (Sigma Pi). This year nineteen council officers along with Office of Fraternity and Sorority Affairs staff attended the conference at which the Interfraternity Council and Panhellenic Association received programming excellence awards in all possible categories.

#### Greek Week

**Lyn Chao '06** (alpha Kappa Delta Phi), **Becky Macey '06** (Kappa Kappa Gamma), and **James Thompson '05** (Chi Phi) organized six days of events, including a Scholastic Bowl, Service Auction, Recycling Drive, and two days of Greek Olympics. The chapters with the most points at the end of the week were awarded cash prizes to be used toward a charity of their choice. The overall winners are listed below.

#### Greek Week 2004 Winners

1st Place	2nd Place	3rd Place
Chi Phi	Sigma Alpha Epsilon	Pi Kappa Phi
alpha Kappa Delta Phi	Lambda Pi Chi	Lambda Theta Phi
Alpha Phi	Kappa Alpha Theta	Kappa Delta

2004 Spirit Award: Pi Beta Phi



## Leadership Development and Training



2005 A.D. White Leadership Conference

### Greek Health Project Coordinator

The Health Project Coordinator position was created in response to a growing demand for more chapter outreach regarding health issues. Nick Linder '04 (Pi Kappa Phi) worked with students, staff, alumni and faculty to develop and implement strategies aimed at reducing hazing and alcohol abuse among Greek students. Nick created Greek Action on New Member Development, a group whose purpose is to seek improvement and support change in new member practices within individual chapters and the community at-large. This position also included direct outreach to chapters on topics such as social event planning and management, campus safety, and hazing. Finally, it culminated with a research project on misconduct in the Greek community.

### Delta Series

Katie Button '05 (Pi Beta Phi), Jason Lee '05 (Pi Delta Psi), and Devan Musser '05 (Sigma Pi) developed the schedule, which encouraged new members to participate in educational programs that were designed to enhance their overall Greek experience. These programs included a welcome reception, an anti-hazing program that featured a scripted scenario performed by brothers of Pi Kappa Phi, Queer Eye for the Straight Ally, and Strolling 101: Party Walking for Beginners.



2004 Emerging Leaders' Retreat



2004 Greek Week

# Leadership Development and Training

## Interfraternity Council (IFC) Events and Programming

### Pro-Brotherhood Summit

Themed “Re-Evaluating Our Values,” the program focused on exploring how our fraternal mission, purpose, and values coincide with who we are and what we do. Students evaluated new member programs, shared ideas for pro-brotherhood activities, and discussed Cornell’s anti-hazing policy. The summit featured presentations by **Johnny Hill ‘06** (Sigma Nu), **Ryan Pernice ‘07** (Pi Kappa Phi), and **Dan Schudroff ‘05** (Phi Kappa Tau).

### Social Policy Summit

In April, more than 120 fraternity leaders convened at the Interfraternity Council Social Policy Summit to discuss the effectiveness of the current policy and the inevitable need for improvement. Members from the Committee on Alcohol and Other Drugs, including **Alex Deyle ‘06** (Sigma Pi) and **Mike Hirschfield ‘06** (Sigma Nu), helped facilitate small group discussions. These groups addressed issues related to expectations and policies, education and training, measurement and enforcement, and consequences and sanctions.

### Cornell-Princeton Lacrosse Game

In collaboration with the Ithaca Youth Bureau and Ithaca Lacrosse Association, the Interfraternity Council sponsored a youth day at the Cornell-Princeton lacrosse game. Approximately 40 local youth attended the game with members from several Greek chapters.

## Multicultural Greek Letter Council (MGLC) Events and Programming

### Greek Freak Step Show

The annual spring Greek Freak Step Show coordinated by Multicultural Greek Letter Council Executive Vice President Patrick Pierre-Louis ‘06 (Iota Phi Theta) raised over \$1,600 for the hurricane relief effort in the Caribbean. This year, in addition to volunteering to work the show, the Panhellenic Executive Board participated in the stroll competition during intermission.

#### Greek Freak Step Show Winners

<b>1st place male team:</b> Iota Phi Theta	<b>1st place female team:</b> Delta Sigma Theta
<b>2nd place male team:</b> Omega Psi Phi	<b>2nd place female team:</b> Sigma Gamma Rho

### Relay for Life

The Multicultural Greek Letter Council raised over \$600 for a team of walkers in the Relay for Life event in April. The team, led by **Beth Lasoff ‘05** (Lambda Pi Chi), comprised of members from Lambda Theta Phi, Omega Phi Beta, Omega Psi Phi, Lambda Theta Alpha, Iota Phi Theta, walked for the entire event.

## Panhellenic Association (PA) Events and Programming

### Tompkins County Public Library Initiatives

In the fall, the Panhellenic Association sponsored a Score for More Basketball Tournament that raised \$350 for the children’s foreign language media section in the Tompkins County Public Library. Then in the spring, under the leadership of PA Executive Vice President, **Samara Fetto ‘06** (Kappa Kappa Gamma), the Junior Panhellenic delegates were able to raise \$1,255 at the 3rd Annual Charity Bowl-a-Thon. This donation was made to help the Tompkins Learning Partners continue their dedication to helping adults with reading difficulties.

### Programming

**Erica Kerman ‘07** (Pi Beta Phi), the Panhellenic Association Vice President of Programming, worked with the sororities in the Creating Chapters of Excellence program to host a lecture and reception with Emma McLaughlin and Nicola Kraus, the authors of the *Nanny Diaries* and *Citizen Girl*. The Panhellenic Association also raised over \$1,000 towards the tsunami relief effort through bracelet sales and support of the Big Red Relief concert.

## Order of Omega

Under the leadership of President **Jon Harsch ‘05** (Sigma Phi Epsilon), Cornell’s only Greek Honor Society hosted an All-Greek Presidents’ Reception at the Sigma Pi Fraternity house. A survey of fraternity and sorority chapter presidents found that a large majority of chapters engaged in social practices that were in violation of the Bring-Your-Own-Beverage policy. After completing a considerable amount of additional research on social practices and safety concerns within the Northeast region, the Order of Omega group presented their findings during an educational session entitled “Reality Check: Safety in Our Community” at the Northeast Greek Leadership Association Conference.



# RECRUITMENT

## Membership and Recruitment Summary

Over the past year, the number of students registering for Interfraternity Council and Panhellenic Association formal recruitment on-line continued to increase. Council leaders developed a number of new publicity efforts this past year, including the creation of an interactive CD featuring information on the recruitment and intake processes for IFC, MGLC, and PA.

### Interfraternity Council

The Interfraternity Council experienced a slight decline in recruitment numbers with 617 new members, compared to 629 during the 2003-04 academic year. **Mark Pincus '05** (Alpha Sigma Phi), Interfraternity Council Vice President for Recruitment, and his recruitment committee worked to advertise and promote the Greek experience throughout campus. With the re-establishment of Delta Chi Fraternity in spring 2005 and the closing of Theta Chi Fraternity in summer 2005, the total number of IFC chapters is 39.

#### IFC Formal Recruitment Summary 2004-2005

Registered Participants:	645
Number of Bids Signed:	617
% Pledged:	96%

### Panhellenic Association

The Panhellenic Association hosted a successful "Meet & Greet" in lieu of the typical fall open houses. Each chapter was invited to have two representatives present to promote the Panhellenic community and answer questions regarding formal recruitment. In the spring, the Panhellenic implemented a new web-based system to assist chapters during recruitment. The ICS recruiting software proved to be a useful tool to make the registration and matching processes more accurate and efficient. In addition, Panhellenic incorporated an MGLC presentation into the first round of recruitment to provide potential new members with a comprehensive view of the Greek community.

#### PA Formal Recruitment Summary 2004-2005

Registered Participants:	548
Number of Bids Signed:	404
% Pledged:	75%

### Multicultural Greek Letter Council

The Multicultural Greek Letter Council continues to grow with the addition of more than thirty new members this year. Two chapters, Alpha Phi Alpha, and Zeta Phi Beta were closed, bringing the total council membership to 15 organizations.



Fraternity and Sorority members of  
Multicultural Greek Letter organizations

# GOVERNANCE

## Fraternity and Sorority Self Governance

Self-governance is the hallmark of the fraternity and sorority experience. The Greek judicial system supports a student-centered model, where the governing council leadership resolves an average of 60 cases annually through informal mediation or through a Greek Judicial Board hearing. Serious chapter misconduct that might result in an organization's loss of university recognition is referred to a Chapter Review Board, which is chaired by the Associate Dean of Students. In a review of the trends related to chapter misconduct and recidivism over the last four academic years, Level I offenses (more serious) are similar in number to less serious Level II and III offenses. Chapters with higher rates of misconduct have been referred to the Chapter Review Board. Of the 25 chapters referred to the Chapter Review Board since 2001, 18 or 72% have had a decrease in the number of judicial incidents following a review board meeting. Of those 18, nine (9) have closed and seven (7) of those groups have returned to campus following a recolonization by their international organization. Five organizations (5) have undergone a membership review since 2000.

### Tri-Council Meetings

Over the past year, all three councils have convened for community-wide meetings. These issue based tri-council meetings covered such topics as new membership recruitment best practices and diversity.

### Revising the Strategic Plan

#### Vision 2 Reality Task Force

During the 2004-05 academic year the Vision to Reality Task Force (V2R) comprised of students and staff met to draft a revised strategic plan for the Greek community at Cornell. The task force's underlying purpose is to create a vision for the Cornell Greek Community that promotes individual chapter excellence while instilling unity among the entire system, develop a plan to guide chapters and the community to reach this vision, and create a method in which the community evaluates and rewards continued growth. At the end of the academic year, the task force completed a draft form of the "Greek Code". This document outlines roles, responsibilities, and expectations of chapters, the three governing councils, the Office of Fraternity and Sorority Affairs, as well as alumni volunteers needed in order to reach higher levels of performance as individual chapters and as a community.

Over the course of the next academic year, the task force plans to complete its charge by engaging alumni, faculty, and university administrators in refining the Greek Code. The goal is to have a working document and procedures in place to measure performance against the document by the end of the 2005-06 academic year. The students that have served on the task force include: **Randy Allen '05** (Sigma Phi Epsilon), **Tiffany Brutus '06** (Omega Phi Beta), **Susan Dauber '06** (Kappa Kappa Gamma), **Alex Deyle '06** (Sigma Pi), **Eric Goldstein '05** (Lambda Chi Alpha), **Jon Harsch '05** (Sigma Phi Epsilon), **Jeff Massa '05** (Sigma Alpha Epsilon), **Melanie Pope '05** (Alpha Phi), **Stephanie Wedekind '05** (Delta Delta Delta), and **Vernida White '06** (Alpha Kappa Alpha).

### Social Guidelines

#### President's Council on Alcohol and Other Drugs

The Fraternity and Sorority Committee on Alcohol and Other Drugs continues to explore strategies to address improper use of alcohol and other drugs within our community. This year, six teams were created to better tackle specific dimensions of use in our community: Recruitment/New Member Development, Judicial Affairs, Education and Awareness, Public Relations, Social Management, and BYOB Management.

#### Third-Party Catering

The Greek community will be working with Alfredo's Catering Service from New Hartford, New York. Event Manager Corey Alter and his staff have been working with the Greek communities from Colgate University and Hamilton College for more than 4 years and Alfredo's owner has 25 years of experience in the catering and banquet industry.

### Judicial System Summary

A summary of judicial activity for the last four years (see below) indicates that there continues to be considerable challenges related to health and wellness issues of fraternity and sorority students. A Level I violation involves substance abuse, where a student is transported to the hospital or hazing. Several harm reduction strategies have been employed to address this chronic problem.

#### Sunshine Policy

The leaders of the Greek community support a "Sunshine Policy" for chapter misconduct where the organization disregarded the health and safety of their members or guests.

#### Security Patrols

This year, the Office of Fraternity and Sorority Affairs registered 251 social events, and 37 resulted in a complaint of misconduct. To hold organizations accountable to the social guidelines and expectations for membership, the governing councils will implement a roving security patrol in the 2005-06 year. The patrol will aim to correct problems before they become more serious.

### Hazing Website

The website [www.hazing.cornell.edu](http://www.hazing.cornell.edu) was developed by the Health Promotions staff at Gannett: Cornell University Health Services in collaboration with other university staff and student leaders and launched in spring 2005 in order to help individuals:

- Learn about hazing at Cornell
- Report incidents of hazing
- Explore alternative group-building activities
- Find out what you can do to prevent hazing
- Discover hazing-related resources

This site is a resource for students, staff, faculty, alumni and others interested in learning about hazing within student groups at Cornell University. It examines this issue explicitly in an attempt to overcoming the secrecy that perpetuates hazing.



In 1998 the university commissioned the architectural and engineering firm of Einhorn, Yaffee, and Prescott (EYP) to undertake a comprehensive assessment of each of the fraternity and sorority houses on campus (total of 54 facilities). The study revealed the aggregate capital needed to address facility improvements was approximately \$39 million with an additional estimated \$12 million needed to complete suggested or desired improvements. Since 1998, 17 organizations have activated or completed capital funding campaigns ranging from \$500,000 to \$4,000,000. Seventeen chapters have established or pending 501 C3 educational foundations, and seven privately-owned organizations are receiving or have campaign-approved university gift recognition credit.

## Fire Safety Systems

By 2005, the university mandated that every university-owned facility be equipped with an enhanced fire safety system and full sprinkler system. The Fraternity and Sorority Advisory Council and the Office of Fraternity and Sorority Affairs partnered with university-owned facilities to implement these improvements and to date, 15 facilities have been equipped with full sprinkler systems and one facility remains partially equipped.

It was also strongly recommended that privately-owned chapters update their systems. Presently, 16 have full sprinkler systems in place, 12 facilities have partial systems, and 10 facilities have no system in place. The university is recommending that partial systems either be converted or completely replaced. Given statistical data about fire hazards and mortalities, it is imperative that the Greek community takes action to ensure the safety of all student members.

## University-Owned Chapter Facilities

### Kitchen Safety and Sanitation Program

Up until 2002 Environmental Health and Safety (EHS) inspected all university-owned facility kitchens. The inspections ended in 2002 when the EHS inspector retired from Cornell. In 2004, The Office of Fraternity and Sorority Affairs (OFSA) hired Melissa Clary from Campus Life and Dining to implement a Kitchen Safety and Sanitation Program. Site visits and kitchen reviews were conducted resulting in the closing of several kitchens due to various health and safety violations. The reviews and discussions that followed showed a strong need for training with all cooks and stewards. It has been suggested that all cooks and stewards of university-owned facilities complete the ServSafe certification kitchen and sanitation program in the 2005-06 academic year.

### End-of-Year Condition Report

In summer 2004, the Office of Fraternity and Sorority Affairs (OFSA) created and exercised an inspection of the common areas of all university-owned facilities. The purpose is to alert the chapter undergraduates and alumni of any problems and/or needed attention to areas including sanitation, safety, and housekeeping. The results of these findings are submitted to them via email soon after the inspection, in the chapter's End-of-Year Report, and kept on record with the university.

### Financial Summary

Of the 67 recognized chapters, 54 have chapter housing, with 16 facilities owned by the university. The asset values of the university-owned properties are estimated at \$82,973,225. This approximate value was determined by summing the total square footage of the facilities (total square feet = 273,448) and multiplying the result by the average replacement cost per square foot (\$300). Annual revenues and expenses for university-owned facilities for 2004-05 were \$2,869,740. Revenue included: housing income of \$2,235,161; gift income of \$634,579; and investment income of \$28,418. Operating expenses for the year included capital expenses of \$927,579.

These figures illustrate the value of and support for university-owned Greek facilities. For this reason, the initiative to develop long-range facility and financial plans for every university-owned facility continues. The process combines an assessment of current and future finances with the capital needs of the facility outlined in the EYP facility assessment report. Required facility improvements and major repairs are defined and prioritized given the financial realities of each organization. Areas where funding shortages will be of particular concern are also highlighted in the long-range financial planning process.

### Facilities Update

The following section summarizes the university-owned facility improvement projects completed during the 2004-05 academic year as well as capital renovations planned for the future.

## Finances and Facility Improvements



Pi Delta Psi fraternity moved to 124 Triphammer Road in 2004.

**Alpha Omicron Pi** installed a new sprinkler system and fire alarm system in summer 2004. The sorority is engaging an architect to provide conceptual drawings for major redesign of the building.

**Chi Phi** replaced most of the windows on the main floor with energy efficient low maintenance windows. Multiple small projects and improvements are underway.

**Delta Kappa Epsilon** upgraded the sprinkler system in summer 2004. Third floor bedroom doors were replaced in summer 2005.

**Delta Tau Delta** installed a new sprinkler system in the summer 2004.

**Delta Upsilon** replaced the exit door from the basement recreation room. The main floor was re-varnished. Their \$1.6 million capital campaign continues.

**Kappa Sigma** installed electromagnetic door holders on the hallway fire doors. The main floor was re-varnished.

**Phi Gamma Delta** renovated the bathrooms in the east wing, with construction completed in fall 2004. The exterior of house was painted in summer 2005. The sprinkler system was also upgraded.

Pi Delta Psi moved to 124 Triphammer Road in fall 2004.

**Psi Upsilon** patched and painted the entire second and third floors in the summer 2004.

**Sigma Alpha Epsilon** installed a new sprinkler system in the summer 2004. A new ceramic tile floor on the main floor level was also installed.

**Sigma Alpha Mu** took occupancy at 10 Sisson Place in fall 2004. A new sprinkler system was installed in summer 2004. Upgrades to the kitchen and electrical system were made during the academic year.

**Sigma Phi Epsilon** is in the discussion phase of upgrading the heating and ventilating systems in the facility.

**Sigma Phi Society** began the design phase for a major heating and sprinkler system upgrade scheduled to start construction in summer 2006. New oak hardwood flooring was installed on the main floor in summer 2005.

10 **Zeta Psi** installed a new sprinkler system in the summer 2004.

## Privately-Owned Chapter Facilities

### Financial Summary

Sciarabba Walker & Co., LLP manages the financial accounting for approximately 30 of Cornell's privately-owned chapters. According to the firm, on average, undergraduate fraternities and sororities respectively pay \$80,000 and \$55,000 annually to the house corporations for rent. For most chapters, this rent pays for real estate taxes, insurance on the facility, and a predetermined amount toward house maintenance. Depending on the debt that the house corporation holds, debt service may also be included in the annual rent. Sciarabba Walker & Co. provides guidance to the undergraduates and alumni on annual operating costs for numerous chapters and helps in the planning for capital needs and expenditures as well as establishing "bench marks" for good operating practices.

Over the past year, several chapters have completed a number of enhancements to their properties, including the purchase of new furnishings, modernizing bathrooms, upgrading sprinkler systems, and installing Internet connection capability. Many organizations continue to plan financially for the installation of full sprinkler systems.

Successful fund-raising from Cornell Greek alumni is a strong indication of the health and well-being of individual chapters. Many house corporations are conducting capital campaigns for major repair work to be done in the near future.

### Facilities Update

The following section summarizes the privately-owned facility enhancement projects completed during the 2004-05 academic year and capital renovations planned for the future. This list, although not comprehensive, includes information obtained from surveying alumni and from university staff knowledge.

**Alpha Chi Omega** has added a new storage facility to the property.

**Alpha Delta Phi** completed \$75,000 worth of interior renovations to the bathroom facilities and dining room stairs. Future plans include \$50,000 in extensive repairs to exterior stone, roofing and chimneys.

**Alpha Sigma Phi (Rockledge)** recently installed new carpeting in the entire house, as well as a new washer and dryer. In addition, Corporation Board members have opened communications with the university and the national fraternity offices about an upcoming capital campaign. The Board is putting together a Renovation Planning Committee, composed of alumni and undergraduate members. The goal is to complete a significant amount of renovation in time for its Centennial Celebration in 2009.



## Finances and Facility Improvements



Delta Phi (Llenroc)

**Alpha Tau Omega** has announced a five-year \$1.5 million capital campaign to fund major repair and renovations to the entire facility, including all floors of the building as well as the exterior of the property.

**Alpha Xi Delta** recolonized in spring 2004 after being away from campus since 1964. The chapter moved into 115 The Knoll, owned by Delta Phi Epsilon sorority, and has made minor upgrades to the facility.

**Beta Theta Pi** celebrated its 125th year with a Homecoming gala, hosting over 250 alumni, friends, and university staff and faculty. Exterior improvements were made to the driveway and to the surrounding landscape. Plans are underway to renovate the kitchen, bathrooms, and extend sprinkler systems into every bedroom.

**Delta Chi** recolonized the Cornell chapter in spring 2005 and is in negotiations with Cornell regarding the potential gift of the property to the university, upon completion of a \$1.6 million phase one construction renovation. As the chapter moves into full renovation, a fund-raising campaign will be planned to raise additional funding for a much needed addition to the building.

**Delta Gamma** has repaved the driveway at the chapter house and purchased some new dining room tables. At the request of the members, they will be updating the little kitchen with new appliances, cupboards and counter tops and a fresh coat of paint.

**Delta Phi** has made improvements to the electrical system and windows at Llenroc and will continue their effort in modernizing the building, particularly in the kitchen. The wood floors on the first and second floors will be resurfaced in the fall, bringing projects expenses to over \$20,000 for the year.

**Kappa Delta** renovated its study room/library with new lighting and furnishings making the room more conducive to academic study. During the summer of 2005 work was done on the exterior of the building and the back deck was sanded and stained. Wireless Internet connection was also installed in the entire house.

**Kappa Delta Rho** has begun an energy conservation plan to include the replacement and/or repair of doors, windows, and lighting. A kitchen renovation began in the spring of 2005 and will include the purchase of new cooking equipment and a computer to facilitate on-line "checkups" and dinner reservations.

**Kappa Kappa Gamma** is in discussion with university officials to begin a fund-raising campaign for facility enhancements and program and scholarship development. The chapter has established a foundation (tax-exempt status with the IRS) and has applied with the university to receive university gift recognition credit.

**Lambda Chi Alpha** continues to discuss plans for a capital campaign for major repairs and renovations to the chapter house.

**Phi Delta Theta** replaced all the wood floors in the great hall and pool room. Kitchen renovations include the installation of a dishwashing system.

**Pi Beta Phi** is in the planning phase of a capital fund-raising campaign and will be celebrating its 50th year in its current residence.

**Sigma Chi** successfully completed a \$2 million capital campaign to fully renovate its facility which re-opened in fall 2004 after closing in 2003. In November 2004, the chapter hosted a celebration where it announced the dedication of the great hall in memory of Harry Nash, the chapter's cook for 30 years. Plans to raise an additional \$300,000 to fund a number of additional improvements are underway. Contributions receive university gift recognition credit.

**Sigma Nu** continues to plan for a significant fund-raising capital campaign.

**Theta Delta Chi** made several renovations to their kitchen and pantry, all common areas including the living room, library, card room, dining room and hall corridors. The third floor and lower level showers were also renovated. All electrical outlets were repaired to comply with code requirements.

**Zeta Beta Tau** continues to make improvements at Edgecliff. Over the past year, new furniture and carpeting for the chapter room were purchased and several rooms have been repainted. They plan on refurbishing the floors on the first floor.

# DEVELOPMENT

## Alumni Affairs and Development

Outreach activities occurred during the past academic year in an ongoing effort to support alumni who work with Cornell's fraternities and sororities. The success of our Greek organizations is directly linked to the volunteer support and financial resources available from alumni, parents, and friends of the Greek community.

### Alumni Relations Activities

#### Alumni Organizations

##### *Fraternity and Sorority Advisory Council*

The Fraternity and Sorority Advisory Council continues its active role in advising the Office of Fraternity and Sorority Affairs on strategic matters and issues affecting the 67 chapters of its Greek System. The focus of the council explores and defines ways in which the system can be strengthened to assure that undergraduates gain maximum experiential benefit from their individual fraternity and sorority experience. Over the past ten years, the alumni, in cooperation with the administration and the faculty, have worked to assure that Cornell's Greek System remains strong in providing a residential learning experience unique among peer institutions.

The council is actively engaged with students in working to better the Greek experience. Examples of collaboration with Cornell University administration, faculty, student leaders, and council members are listed below:

- Residential Initiative Committee
- Interfraternity Council Pro-Brotherhood Committee
- MGLC Anti-Hazing Subcommittee
- Greek Finance Subcommittee
- Interfraternity Council Recruitment Committee
- Social Event Committee
- Management Agreement Task Force

##### *Alumni Interfraternity Council (AIFC)*

The Alumni Interfraternity Council reviews and provides counsel to fraternities about practices related to technology, social policies, and alumni volunteer recruitment. Council Officers include:

- President, Michael Bergelson '95 (Psi Upsilon)
- Vice President Development, Russell Kellner '97 (Alpha Sigma Phi)
- Vice President Finance, Harris Palmer '62 (Sigma Alpha Epsilon)
- Vice President Communications, David Poggi '97 (Alpha Sigma Phi)
- Vice President Legal, Michael Puleo '72 (Delta Phi)
- Vice President Technology, J. Cory Wright '95 (Pi Kappa Phi)

##### *Alumnae Panhellenic Advisory Council (APAC)*

The Alumnae Panhellenic Advisory Council exists to keep sorority alumnae advisors at Cornell aware of current trends, to promote and be an advocate for the sorority system, and to improve the sorority image on the Cornell campus. Council officers are:

- President, Donna Green (Kappa Delta)

- Vice President Membership Recruitment, Lisa Everts '92 (Chi Omega)
- Vice President Finance and House Corporations, Barb Kathan Verna (Delta Phi Epsilon)
- Vice President Volunteer Recruitment and Development, Lauren Mossotti-Kline (Gamma Phi Beta)
- Vice President Communications and Special Events (ex-officio member), Marrie Neumer

#### Alumni Events

In addition to participating in numerous activities with individual chapters, the Office of Fraternity and Sorority Affairs hosted an All-Greek Alumni Networking Reception for undergraduate Greek juniors and seniors at Homecoming. The first part of the program allowed for alumni to offer tips on effective networking followed by informal discussion with approximately 20 undergraduates seeking career advice. The event was followed by the annual Alumni Reception and meeting, hosted by the Alumni Interfraternity Council (AIFC) and Alumnae Panhellenic Advisory Council (APAC).

The annual A.D. White Leadership Conference had the largest alumni contingent to date. The conference included an alumni presentation by **Paula Sidle '77**, founder of the Soltice Group, who discussed fund-raising and philanthropy and the fraternity and sorority community.

In an ongoing effort to communicate with alumni about the strengths and challenges of the Cornell Greek system, Associate Dean of Students **Suzy Nelson** and Alumni Affairs and Development staff member **Marrie Neumer** traveled to New York in the spring to attend a reception with fraternity and sorority young alumni and to give an update on the Residential Initiative and its impact on the Greek community.

#### Alumni Resources

The Fraternity and Sorority Affairs website [www.greeks.cornell.edu](http://www.greeks.cornell.edu) provides resources such as manuals, contact information, calendars of events, policy guidelines, and opportunities for involvement, and information about the Greek community to interested volunteers and parents.

In addition, an on-line alumni volunteer resource guide has been developed for chapter advisors, alumni corporation presidents, and others that take an active role in advising Cornell chapters.



## Fund-raising Support

Cornell University and the fraternity and sorority community are grateful for the tremendous generosity of alumni, parents, and friends. These contributions make it possible to support leadership and educational programming in the Greek community.

**Robert W. Selander '72 Emerging Leaders Fund:** This program endowment fund was established in December 2003 through a gift from **Robert W. Selander '72** (Sigma Chi) to support leadership development initiatives. This program includes an annual Emerging Leaders' Retreat.

**Jarett F. '80 and Younghee Kim Wait Fund for Greek Excellence:** Jarett F. '80 (Sigma Pi) and Younghee Kim Wait have made a \$100,000 gift to recognize the significant educational and leadership opportunities that fraternities and sororities provide undergraduate students. This endowment fund for Greek excellence will be used to support the following:

- Enhancing professional and leadership opportunities for fraternity and sorority members
- Promoting faculty involvement with Greek organizations through intellectual and cultural activities
- Developing collaborative and multicultural programs within the Greek community to foster a greater awareness and respect for diversity
- Co-sponsoring student-initiated programs to encourage civic responsibility both on and off campus

**Associate Dean's Fraternity and Sorority Leadership Fund:** This fund is used to support fraternity and sorority programming and community-wide leadership training. The following individuals and organizations have generously contributed this fiscal year 2005:

Kim McKenzie Bendus '94, Pi Beta Phi  
Melissa J. Bersofsky '00, Kappa Delta  
Cornell Foundation  
Christine M. Cronin '00, Delta Gamma  
Deutsche Bank Americas Foundation  
Fidelity Charitable Gift Fund  
International Paper Company Foundation  
Susan Kalus '80, Delta Gamma  
Ayanna Lewis-Gruss '99  
Patrick F. Madden '88, Phi Kappa Tau  
Merrill Lynch & Company, Inc.  
Michael D. Nadler '56, Delta Chi  
Roy R. Payne Jr. '52, Delta Chi  
Alan Suzuki '03, Phi Kappa Tau  
Symantec Giving Program  
Adam S. Tope '02, Phi Kappa Tau  
David W. Wheeler '78, Phi Sigma Epsilon

**Creating Chapters of Excellence Gift Fund:** This fund is used to augment cultural, educational, and intellectual programming, along with enhanced mentoring opportunities for undergraduate students in the participating chapters. The following alumni have contributed generously to this fund for the fiscal year 2005:

Frank C. Abbott '42, Sigma Pi  
Marcia Archibald '46, Kappa Kappa Gamma  
Joseph W. Calby '51, Sigma Pi  
Leo J. Chamberlain '52, Sigma Pi  
Chubb Corporation Inc.  
Onjalique K. Clark '87, Alpha Kappa Alpha  
Richard G. Clark '51, Sigma Pi  
Louis J. Conti, '41, Sigma Pi  
Stacy L. Cowan '94, Alpha Kappa Alpha  
Linda M. Davis '53, Kappa Kappa Gamma  
Donna M. Derr '58, Kappa Kappa Gamma  
Joseph S. Dewey '53, Sigma Pi  
Jacqueline S. Dunning '59, Kappa Kappa Gamma  
Mariela M. Dybner '92, Kappa Kappa Gamma  
Fidelity Charitable Gift Fund  
H. Laurance Fuller '60, Sigma Pi  
Susan E. Fulton '75, Kappa Kappa Gamma  
Thomas M. Garr '76, Sigma Pi  
Leigh Dyson Geller '94, Kappa Kappa Gamma  
Joanne A. Herron '64, Kappa Kappa Gamma  
Michael Josephson  
Carol M. Killiebrew '92, Alpha Kappa Alpha  
Jane S. Markson '81, Kappa Kappa Gamma  
Dana M. Marohn '04, Kappa Kappa Gamma  
William P. Mathers '41, Sigma Pi  
Terri Mazur '81, Kappa Kappa Gamma  
Monterey Fund, Inc.  
Susan H. Murphy '73, Ph.D. '94, Pi Beta Phi  
Patricia Q. Murray '81, Kappa Kappa Gamma  
Judy Palmer '64, Kappa Kappa Gamma  
Douglas M. Parker '56, Sigma Pi  
Katherine A. Paz '02, Kappa Kappa Gamma  
Marianne A. Rippe '53, Kappa Kappa Gamma  
Helen M. Roberts '66, Kappa Kappa Gamma  
Vanness D. Robinson '57, Sigma Pi  
Barbara A. Sabaitis '81, Kappa Kappa Gamma  
Margaret H. Schubauer '86, Kappa Kappa Gamma  
Michael R. Sfar '43, Sigma Pi  
Kenneth T. Steadman '59, Sigma Pi  
Jean A. Sylling '55, Kappa Kappa Gamma  
Jarett F. Wait '80, Sigma Pi  
Harlan R. Wengert '49, Sigma Pi  
Deborah D. Winn '65, Kappa Kappa Gamma  
Sara S. Winship '68, Kappa Kappa Gamma

**Multicultural Greek Letter Council Gift Account:** This annual fund was established in 2001 to allow alumni to provide financial programming assistance to the Multicultural Greek Letter Council.

**Robert G. Engel Memorial Endowment:** This endowed fund was established in 1998 to provide discretionary funding for student programming initiatives. As of June 30, 2005, the fund had a market value of \$330,687.

**Robert G. Engel Associate Dean and Director of Fraternity and Sorority Affairs Endowment:** In 1996, an endowment was established to fund the position of The Associate Dean of Fraternity and Sorority Affairs in perpetuity. As of June 30, 2005, the fund had a market value of \$1,135,632.

# RECOGNITION

## Undergraduate, Alumni and Faculty Recognition

In a community where many stand out for academic, social, and philanthropic accomplishments, it is important to recognize those who go above and beyond expectations. Throughout the year, the undergraduate councils along with the Office of Fraternity and Sorority Affairs seek to highlight the accomplishments of our faculty, students, alumni, and administrators. The following section recognizes these recipients.

### Chapter Recognition

The 2005 Fraternity and Sorority Awards Ceremony held in April honored the contributions of Greek students, staff, faculty, and alumni. This year, 25 chapters were recognized with a monetary incentive award for their accomplishments and for their successful implementation of the Fraternity and Sorority Strategic Plan.

#### Most Improved Chapters

Alpha Zeta  
Chi Psi  
Delta Delta Delta  
Kappa Alpha Theta  
Kappa Sigma  
Lambda Phi Epsilon  
Lambda Theta Phi  
Phi Sigma Kappa  
Pi Kappa Alpha  
Sigma Chi  
Sigma Nu  
Zeta Beta Tau

#### Most Outstanding Chapters

Acacia  
Alpha Chi Omega  
Alpha Kappa Alpha  
Kappa Delta  
Lambda Chi Alpha  
Phi Delta Theta  
Phi Kappa Tau  
Pi Beta Phi  
Pi Delta Psi  
Pi Kappa Phi  
Psi Upsilon  
Sigma Alpha Mu  
Sigma Phi Society

#### 2004-05 Order of Omega Award Recipients

##### Order of Omega Award for Excellence in Leadership and Dedication

Katie Button '05 – Pi Beta Phi

##### Order of Omega Award for Integrity of Character

Melissa Rasmussen '05 – Alpha Chi Omega

##### Award for Leadership and Commitment to Order of Omega and Cornell University

Jonathan Harsch '05 – Sigma Phi Epsilon

### Chapter Awards

#### Outstanding Service to the Community

Delta Upsilon  
Delta Gamma  
Delta Sigma Theta

#### Outstanding Faculty Fellow Program

Pi Delta Psi – Professor Yufen Lee Mehta

#### Outstanding New Member

Pi Kappa Phi  
Alpha Phi  
Lambda Pi Chi

#### Outstanding Facility Management

Delta Kappa Epsilon  
Lambda Chi Alpha

#### Outstanding Financial Management

Delta Upsilon  
Kappa Delta

#### Marj Converse Award for Outstanding Commitment to the Panhellenic Association

Pi Beta Phi

#### Randy Scott Stevens Award for Outstanding Commitment to the Interfraternity Council

Sigma Pi

#### Award for Outstanding Contribution to the Multicultural Greek Letter Council

Lambda Pi Chi

#### Highest Fraternity Grade Point Average

Phi Kappa Tau (spring 2004)  
Zeta Beta Tau (fall 2004)

#### Highest Sorority Grade Point Average

Alpha Chi Omega (spring and fall 2004)

#### Cornell Fund Philanthropy Award

Lambda Phi Epsilon  
Delta Gamma  
Phi Kappa Tau



# Undergraduate, Alumni and Faculty Recognition

## Individual Accomplishments

### Outstanding New Member

Ben Eschenheimer '08 - Seal and Serpent  
Stacey Katz '08 – Sigma Delta Tau  
Janine Conde '06 – Lambda Pi Chi  
Tiffany Brutus '07 – Omega Phi Beta  
Colin Lim '06 – Pi Kappa Phi  
Jeff Glick '08 – Sigma Alpha Epsilon

### Outstanding Chapter Leader

Devan Musser '05 – Sigma Pi  
Michael Berry '05 – Sigma Phi Society  
Eric Goldstein '05 – Lambda Chi Alpha  
Brian Rosenberg '06 – Pi Kappa Alpha  
Gisell Galan '07 – Omega Phi Beta  
William Avitia '05 – Lambda Theta Phi  
Renee Woodburn '06 – Delta Sigma Theta  
Samara Fetto '06 – Kappa Kappa Gamma  
Catherine Deneke '05 – Alpha Omicron Pi  
Lauren Champagne '05 – Pi Beta Phi  
Kimberly Karman '05 – Alpha Chi Omega

### Distinguished Service Award

Brad Wheeler '76 – Sigma Phi Society  
Donald Weadon '67 – Delta Kappa Epsilon  
John Foote '74 – Sigma Chi  
Valerie Machinist '95 – Alpha Omicron Pi  
Jimmy You '03 – Pi Delta Psi  
Lauren Mossotti-Kline – Gamma Phi Beta (Alumnae  
Panhellenic Advisory Council)  
Donna Green – Kappa Delta  
Dennis Paese '73 – Sigma Alpha Mu

### Janiece Bacon Oblack Award for Outstanding Panhellenic Leader

Stephanie Wedekind '05 – Delta Delta Delta

### Edwin Fitzpatrick Award for Outstanding Interfraternity Council Leader

Jeffrey Massa '05 – Sigma Alpha Epsilon

### Robert L. Harris, Jr. Award for Outstanding Multicultural Greek Letter Council Leader

Janie Cisneros '05 – Lambda Pi Chi

### Outstanding Greek Scholars

Jeff Massa '05 - Sigma Alpha Epsilon  
Lauren Jacobs '05 - Pi Beta Phi  
Danielle Williams '05 - Alpha Kappa Alpha

### Outstanding House Director

Bill Walkenbach '98 (Sigma Chi) and Beth Sullivan  
Walkenbach '00 (Pi Beta Phi) – Sigma Delta Tau



Tony Cashen '57, MBA '58, (Delta Upsilon) Chair, Fraternity and Sorority Advisory Council presents Michael J. Taylor '05 (Sigma Pi) with the John S. Dyson Citizenship Award at the A.D. White Leadership Conference

### John S. Dyson Citizenship Award

The John S. Dyson Citizenship Award was established in 2001 in honor of Trustee Emeritus John S. Dyson '65, a distinguished Cornell University Alumnus of Alpha Delta Phi Fraternity who has shown an outstanding commitment to the fraternity and sorority system. Since his undergraduate years, John has demonstrated true dedication and tremendous generosity toward fostering a fraternity and sorority experience that continues to enrich students' lives. The award is given annually as a part of the A.D. White Leadership Conference to a student within the Cornell University fraternity and sorority community who has exemplified exceptional leadership within the Greek community, and who has demonstrated a strong commitment to community service, philanthropy, scholarship, and citizenship.

This year the fraternity and sorority community honored Michael Taylor '05 (Sigma Pi). A student in the College of Arts and Sciences, Mike worked diligently to improve the City of Ithaca and the off-campus experience of Cornell students through his service as an elected official representing the fourth ward on the Ithaca Common Council. He provided leadership and service specifically in issues that affected the Greek community in Collegetown and on West Campus by implementing initiatives including Adopt-a-Block, a program modeled after Adopt-a-Highway. He also served as the Interfraternity Vice President for University and Community Relations and was active in shaping the BYOB policy and increasing participation by all chapters in community service projects. Receiving Honorable Mention recognition were Ryan Colbert '05 (Alpha Delta Phi) and Anna Butrymowicz '05 (Pi Beta Phi).

# Undergraduate, Alumni and Faculty Recognition

## Faculty Achievements

### **Greek Faculty Appreciation Award Recipients:**

John Callister, Senior Lecturer, College of Engineering

Dale Grossman, Senior Lecturer,

College of Agriculture and Life Sciences

John Henderson, Professor, College of Arts and Sciences

David Lipsky, Professor, School of Industrial and Labor Relations

Mark McCarthy, Professor, School of Hotel Administration

Anita Racine, Senior Lecturer, College of Human Ecology

Ken Reardon, Associate Professor,

College of Architecture, Art, and Planning

### **A.D. White Faculty/Administrator of the Year:**

Stephanie Adams, Multicultural Affairs, Ithaca College

Catherine Holmes, Associate Dean of Students, Student Activities

Lt. Mike Musci, Cornell University Police Department

Eve Tominey, Human Ecology



Bryan Strahine '02 talking with Lt. Mike Musci at the Faculty Appreciation Reception.

## Dyson Undergraduate Scholarships

An opportunity for fraternities and sororities to recognize outstanding undergraduate leaders was created in part by University Trustee and Fraternity and Sorority Advisory Council member **John Dyson '65**. John, in conjunction with the University Scholarship Campaign, matched gifts toward the establishment of scholarships that relieve portions of recipients' work requirements and provide significant grants. It was out of this generous offer that the program, informally known as the "Dyson Scholarship Challenge," was created. Alumni raised a minimum of the necessary \$37,500 to establish or enhance a scholarship endowment fund for the chapters listed below. More than \$2.9 million was raised to establish 26 new scholarships for fraternity and sorority leaders.

Dyson Scholarship Recipients (alphabetical by chapter):

### **Alpha Delta Phi Tradition Fellowship**

Tobin Sullivan '06, CAS

Anthony Biddle '07, HO

### **Alpha Omicron Pi Carol Winter and Charles Mund Fraternity/Sorority Scholarship**

Marcela Peres '07, CAS

### **Alpha Phi Cornell Tradition Fellowship**

Carmen Garzona '07, HO

### **Alpha Tau Omega Ralph Henn '69 Scholarship**

Michael Pisco '06, CAS

### **Alpha Zeta A. Joseph Fairbank '48 Scholarship**

Melanie Santsprees '07, CALS

### **Alpha Zeta David J. and Martha Nolan Scholarship**

Lena Smith '07, CALS

### **Alpha Zeta Robert V. Call, Jr. Scholarship**

Jessica Pidkaminy '08, CALS

### **Beta Theta Pi Scholarship**

Stephen Lightfoote '07, CALS

Kevin Ciaccio '07, CALS

### **Delta Delta Delta Martha P. and Lucian L. Leape Scholarship**

Genevieve Horvath '07, CAS

Natalie Jeffrey '07, EN

Brittany Strang '07, CAS

Martha Strebing '07, HE

### **Delta Kappa Epsilon Robert Trent Jones Scholarship**

Neil Crouthamel '06, CALS



## Undergraduate, Alumni and Faculty Recognition

### Dyson Scholarship Recipients (continued):

**Kappa Kappa Gamma Susan Robbins and  
Jonathan Koslow Scholarship**

Bethany Ojalehto '08, HE

**Kappa Sigma Scholarship**

Joseph Legato '07, EN

**Phi Gamma Delta Fred C. Hart Scholarship**

Justin Constant '06, CAS

Sameer Pandya '07, ENG

**Psi Upsilon Jansen Noyes, Jr. and  
Jansen Noyes, III Scholarship**

Jon Feldman '08, CAS

**Psi Upsilon S. F. (Tom) Weissenborn Scholarship**

Gregory Vixama '07, CALS

**Seal and Serpent Scholarship**

Gregory Bowman '06, ENG

Jaskirat Singh '08, CAS

**Sigma Alpha Epsilon**

**William E. Ainsworth, Jr. Scholarship**

Chase Nielsen '06, CAS

Jon Hyduke '06, CAS

Jeffrey Kauth '07, CALS

**Sigma Alpha Epsilon William D. and  
Catherine Bowman Perez Scholarship**

Eric Mihelc '07, CALS

**Sigma Chi Gordon J. Whiting '87 Scholarship**

Christopher Stevens '06, CAS

**Sigma Phi Epsilon Carol Winter and Charles Mund  
Fraternity/Sorority Scholarship**

John Hagens '07, CALS

**Sigma Phi Society Scholarship**

David Drabkin '07, CAS

**Sigma Phi Society Cornell Tradition Fellowship**

David Drabkin '07, CAS

**Zeta Beta Tau Archie and Ester Dotson  
Tradition Scholarship**

Ryan Zacharia '06, CALS

Adam Maisel '06, HO

**Jesse and Barbara Silverman Scholarship (Undesignated)**

Tiffany Southerland '06, CAS (Delta Sigma Theta)

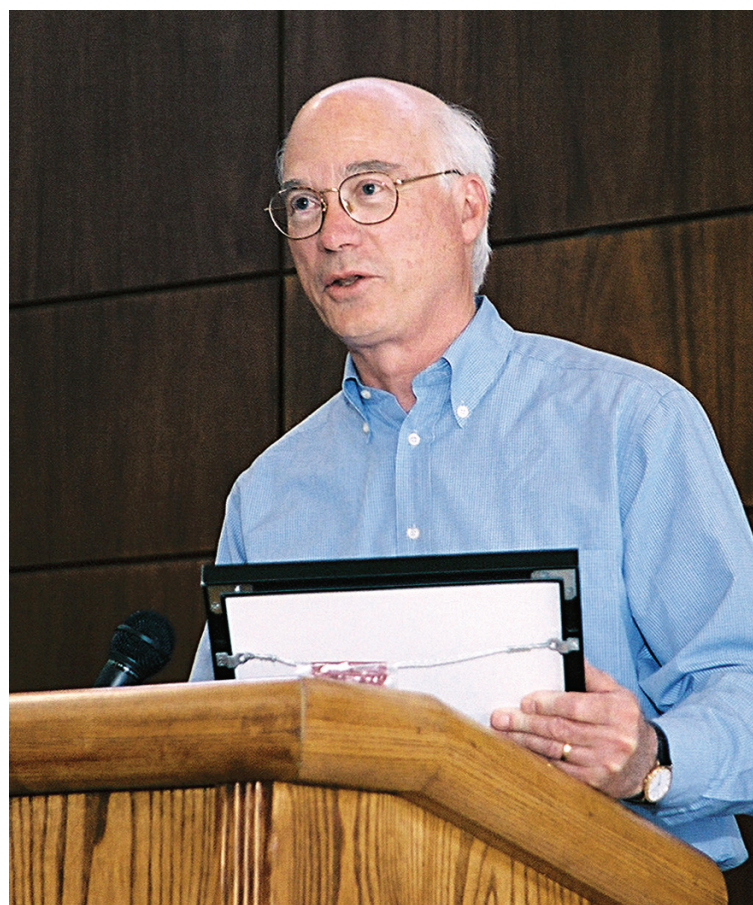
**John S. Dyson Scholarship (Undesignated)**

Tiffany Southerland '06, CAS (Delta Sigma Theta)

Tiffany Brutus '07, CAS (Omega Phi Beta)

Jocelyn Merced '06, CAS (Lambda Pi Beta)

Susan Huang '06, CAS (Kappa Phi Lambda)



John S. Dyson '65 (Alpha Delta Phi)

# APPENDIX

## Appendix A: Fraternity and Sorority Advisory Council Membership Roster

### **Trustees**

John E. Alexander '74, MBA '76 (Phi Kappa Sigma)  
John S. Dyson '65 (Alpha Delta Phi)  
Kevin M. McGovern '70 (Alpha Tau Omega)  
Carolyn C. Neuman '64 (Delta Delta Delta)

### **Alumni**

Anthony B. Cashen '57, MBA '58, CHAIR (Delta Upsilon)  
Nancy W. Clark '62, M Ed '64 (Kappa Kappa Gamma)  
Ron Demer '59 (Sigma Alpha Epsilon)  
Elizabeth C. Everett '97 (Kappa Kappa Gamma)  
Jacqueline Forster '91 (Alpha Kappa Alpha)  
Douglas Onsi '90 (Beta Theta Pi)  
Alfred F. Van Ranst, Jr. '74, MBA '76 (Phi Gamma Delta)  
Jarett F. Wait '80 (Sigma Pi)

### **Faculty**

Rosemary J. Avery, Professor and Associate Chair, Policy Analysis and Management  
Robert L. Harris, Jr., Vice Provost for Diversity and Faculty Development,  
Associate Professor, Africana Studies and Research Center (Alpha Phi Alpha)  
J. Bruce Tracey, Associate Professor, Hotel School Management Operations and Human Resources

### **Alumni Interfraternity Council President**

Michael Bergelson '95 (Psi Upsilon)

### **Multicultural Greek Letter Council Alumni Representative**

Frank B. Wilkinson '84 (Alpha Phi Alpha)

### **Alumnae Panhellenic Advisory Council**

Donna M. Green (Kappa Delta)

### **Interfraternity Council President**

Alex Deyle '06 (Sigma Pi)

### **Multicultural Greek Letter Council President**

Tiffany Brutus '07 (Omega Phi Beta)

### **Panhellenic Association President**

Ashley Higgins '06 (Alpha Epsilon Phi)

### **Ex-Officio Members**

Vice President for Administration and Chief Financial Officer  
Harold D. Craft, Jr. '61, Ph.D. '70 (Tau Kappa Epsilon)

Vice President for Student and Academic Services  
Susan H. Murphy '73, Ph.D. '94 (Pi Beta Phi)

Robert W. and Elizabeth C. Staley Dean of Students  
Kent L. Hubbell '67 (Alpha Delta Phi)

Robert G. Engel Associate Dean of Students  
Suzy M. Nelson (Kappa Alpha Theta)

Director, External Relations, Student and Academic Services  
Gretchen A. Orschiedt

Assistant Director, External Relations, Student and Academic Services  
Marrie E. Neumer



## Appendix B: Office of Fraternity and Sorority Affairs Staff

### **Suzy Nelson, Robert G. Engel Associate Dean of Students**

**538 Willard Straight Hall • 607-255-5430**

General responsibilities include: Coordinate and support Advisory Council; recruit and train alumni/ae leadership; develop and implement strategies for crisis intervention and chapter management; receive, investigate and resolve judicial complaints against chapters; oversee the coordination and implementation of training, planning and program development; coordinate, integrate, and manage all university resources (facilities, finances and public affairs) and activities to support coherent programs for Fraternity and Sorority Affairs.

### **Patty Case, Executive Staff Assistant to the Associate Dean of Students**

**536 Willard Straight Hall • 607-255-5430 • pac25@cornell.edu**

General responsibilities include: Provide office management and programmatic support to the Office of Fraternity and Sorority Affairs; advise students on social event registration and train student social chairs and risk management chairs in the Greek system; train the student Judicial Board Recorder who reports on findings related to the Greek Judicial Board; manage departmental budget and gift accounts; provide direct administrative support to the Associate Dean of Students and Assistant Director for External Relations; support Trustee and alumni-led Fraternity and Sorority Advisory Committee.

### **Lennon Jackson, Assistant Dean of Students for Chapter Operations**

**537 Willard Straight Hall • 607-255-2310 • lnb23@cornell.edu**

General responsibilities include: Serve as an advisor to the Multicultural Greek Letter Council and seven Creating Chapters of Excellence chapters; responsible for the advisement of university recognized fraternities and sororities related to chapter operations; work directly with the Creating Chapters of Excellence Program Graduate Assistants primarily to enhance mentoring to the chapter (alumni, faculty, and national officers), programming (intellectual, service, professional/leadership, and cultural), and facility and financial management.

### **Lisa Blockus, Assistant Dean of Students for Leadership Development**

**539 Willard Straight Hall • 607-255-7175 • lmb57@cornell.edu**

General responsibilities include: Serve as an advisor to the Panhellenic Council and seven Creating Chapters of Excellence chapters; responsible for the advisement of university recognized fraternities and sororities primarily related to student officer training and leadership development; develop, implement, and evaluate educational programs and services for the fraternity/sorority system; co-plan and oversee large-scale events; advise students in managing their programming budget.

### **Brian Strahine, Assistant Dean of Students for Programming and Advisement**

**534 Willard Straight Hall • 607-255-2910 • bss22@cornell.edu**

General responsibilities include: Serve as an advisor to the Interfraternity Council and Order of Omega; responsible for the advisement of university recognized fraternities and sororities; develop, implement, and evaluate educational programs and services for the fraternity/sorority system; co-plan and oversee large-scale events.

### **J. Martin Kelly, Facilities Consultant**

**532 Willard Straight Hall • 607-254-4819 • jmk24@cornell.edu**

General responsibilities include: Assist alumni/ae with establishing facility priorities and long-range facility plan; coordinate life-safety inspections; develop facility audits and prepare written presentations; conduct maintenance inspections; assist in training alumni and chapter officers in facility management; coordinate capital projects; serve as liaison to Facilities Management.

### **Dale Williams, Assistant Dean of Students, Facilities & Finance**

**535 Willard Straight Hall • 607-254-5014 • dlw5@cornell.edu**

General responsibilities include: Provide budget development and support; assist alumni/ae with establishing facility priorities and long-range facility plan; assist in training alumni/ae and undergraduate officers in financial management; review and audit chapter financial accounts; serve as liaison to the Student Management Corporation; manage university accounts; review and analyze chapter financial status and make policy recommendations.

### **Vacant, Administrative Assistant**

**541 Willard Straight Hall • 607-255-2310**

General responsibilities include: Provide administrative support to the staff in the Office of Fraternity and Sorority Affairs (OFSA); oversee compliance with insurance, building codes, office requirements, and organization attendance at educational/leadership events; maintain several databases, and produce bi-weekly reports for staff, and alumni/ae.

### **Marrie Neumer, Assistant Director of External Relations for Student and Academic Services**

**533 Willard Straight Hall • 607-255-3208 • mn58@cornell.edu**

General responsibilities include: Serve as liaison between Fraternity and Sorority Affairs and Greek alumni/ae, and colleagues in the Division of Alumni Affairs and Development; provide support to Greek alumni/alumnae corporation boards and university; support recruitment and training of alumni volunteers for Fraternity and Sorority Advisory Council and chapters; assist with planning for Advisory Council meetings; organize events to promote and foster Greek alumni involvement.

# Appendix C: Interfraternity Council Executive Officers and Chapter Presidents

## Interfraternity Council Executive Officers

Alex Deyle '06 (Sigma Pi), President	Rick Griffith '06 (Psi Upsilon), V.P. for Univ. & Community Relations
Chase Nielsen '06 (Sigma Alpha Epsilon), Executive Vice President	Sameer Mittal '07 (Phi Gamma Delta), V.P. for Programming
Brian Rosenberg '06 (Pi Kappa Alpha), V.P. for Communications	Matthew Salerno '07 (Chi Phi), V.P. for Recruitment
Mike Hirschfield '06 (Sigma Nu), V.P. for Judicial	Steve Grossman '07 (Lambda Chi Alpha), V.P. for Finance

## Chapter Presidents

Acacia 318 Highland Road Noe Bautista '06, President	Delta Phi 100 Cornell Avenue David Bean '07, President	Pi Kappa Alpha 17 South Avenue David Frumberg '07, President	Sigma Pi 730 University Avenue Craig Dewey '06, President
Alpha Delta Phi 777 Stewart Avenue Mathew Saltzman '06, President	*Delta Tau Delta 104 Mary Ann Wood Drive Nicholas Stanley '05, President	Pi Kappa Phi 55 Ridgewood Road Daniel Chambers '06, President	Tau Epsilon Phi 306 Highland Road Robert Bollinger '06, President
Alpha Gamma Rho 203 Highland Avenue Griffin Moag '06, President	*Delta Upsilon 6 South Avenue Bart VanStekelenburg '05, President	*Psi Upsilon 2 Forest Park Lane Justin Hall '06, President	Tau Kappa Epsilon 105 Westbourne Lane Michael Morisy '07, President
Alpha Sigma Phi 804 Stewart Avenue Ronald Meise '06, President	Kappa Delta Rho 312 Highland Road Kevin Nagel '05, President	Seal and Serpent 305 Thurston Avenue Aaron Kimball '06, President	Theta Chi 40 Ridgewood Road Jonathon Stangl '07, President
Alpha Tau Omega 625 University Avenue Charles Crandall '05, President	*Kappa Sigma 600 University Avenue Joseph Legato '07, President	*Sigma Alpha Epsilon 101 McGraw Place Brian Warshay '06, President	Theta Delta Chi 800 University Avenue Bruce Armstrong '06, President
Alpha Zeta 214 Thurston Avenue Scott Henning '06, President	Lambda Chi Alpha 125 Edgemoor Lane Mike Spinnicchia '07, President	*Sigma Alpha Mu 10 Sisson Place Daniel Bushansky '06, President	Zeta Beta Tau 1 Edgecliff Place David Auerbach '07, President
Beta Theta Pi 100 Ridgewood Road Robert Leslie '06, President	Phi Delta Theta 2 Ridgewood Road Jonathan Bellante '06, President	Sigma Chi 106 Cayuga Heights Road Christopher Stevens '06, President	*Zeta Psi 534 Thurston Avenue Xavier San Miguel '06, President
*Chi Phi 107 Edgemoor Lane Zach Forward '06, President	*Phi Gamma Delta 102 McGraw Place Justin Constant '06, President	Sigma Chi Delta 110 Heights Court Apt. #3 Luanne Belgodere '06, President	*University-Owned Facility
Chi Psi 810 University Avenue Samuel Page '07, President	*Phi Kappa Psi 120 Mary Ann Wood Drive Howard Siegelbaum '06, President	Sigma Nu 230 North Willard Way John Hill '06, President	
Delta Chi 102 The Knoll recolonized spring 2005	Phi Kappa Tau 106 The Knoll Kaveh Mansuripur '06, President	*Sigma Phi Epsilon 109 McGraw Place Matthew Sternman '07	
*Delta Kappa Epsilon 13 South Avenue Dave Judge '05, President	Phi Sigma Kappa 702 University Avenue Kristopher Reichardt '06, President	*Sigma Phi Society 1 Forest Park Lane Greg Riessen '06, President	



# Appendix D: Multicultural Greek Letter Council and Panhellenic Association Executive Officers and Chapter Presidents

## Multicultural Greek Letter Council Executive Officers

Tiffany Brutus '07 (Omega Phi Beta), President	Susan Huang '06 (Kappa Phi Lambda), V.P. for Finance
Patrick Pierre-Louis '06 (Iota Phi Theta), Executive Vice President	Nicole Clark '06 (Sigma Gamma Rho), V.P. for Univ. & Community Relations
Jocelyn Merced '06 (Lambda Pi Chi), V.P. for Communications	Tiffany Southerland '06 (Delta Sigma Theta), V.P. for Judicial

## Chapter Presidents

Alpha Kappa Alpha (Sorority) Danielle Williams '05, President	Lambda Phi Epsilon (Fraternity) Eric Trantina '05, President	Omega Psi Phi (Fraternity) Theodore Nyame '05, President
alpha Kappa Delta Phi (Sorority) Lynn Chao '05, President	Lambda Pi Chi (Sorority) Raquel Corona '07, President	Phi Beta Sigma (Fraternity) John Falzone '05, President
Delta Sigma Theta (Sorority) Shekhinah Jay '06, President	Lambda Theta Alpha (Sorority) Astrid Baez '06 President	*Pi Delta Psi (Fraternity) 134 Triphammer Road Brian Chen '07, President
Iota Phi Theta (Fraternity) Patrick Pierre-Louis '06, President	Lambda Theta Phi (Fraternity) William Avitia '05, President	Sigma Gamma Rho (Sorority) Nicole Clark '06, President
Kappa Phi Lambda (Sorority) Julie Kim '05, President *University-Owned Facility	Omega Phi Beta (Sorority) Gisell Galan '07, President	Sigma Lambda Upsilon (Sorority) Daisy Torres '05, President

## Panhellenic Association Executive Officers

Ashley Higgins '06 (Alpha Epsilon Phi), President	Rachel Easton '06 (Alpha Chi Omega), V.P. for Recruitment & Extension
Samara Fetto '06 (Kappa Kappa Gamma), Executive Vice President	Melissa Kiedrowicz '06 (Delta Delta Delta), V.P. for Formal Recruitment
Megan Malone '06 (Delta Delta Delta), V.P. for Communications	Erica Kerman '07 (Pi Beta Phi), V.P. for Programming
Elizabeth Durkin '06 (Delta Gamma), V.P. for Judicial	Vacant, V.P. for Finance
Kristen Rich '06 (Kappa Delta), V.P. for Univ. & Community Relations	

## Chapter Presidents

Alpha Chi Omega 509 Wyckoff Avenue Jenna Odett '07, President	Alpha Xi Delta 115 The Knoll Kate Lyden '06, President	Kappa Delta 109 Triphammer Road Tara Wells '06, President
Alpha Epsilon Phi 435 Wyckoff Avenue Morgan Tucker '07, President	Delta Delta Delta 118 Triphammer Road Marta Novoa '07, President	Kappa Kappa Gamma 508 Thurston Avenue Alexandra Cox-Cuzzi '06, President
*Alpha Omicron Pi 14 South Avenue Michele Segalini '06, President	Delta Gamma 117 Triphammer Road Lauren Davies '07, President	Pi Beta Phi 330 Triphammer Road Kirsten Balzer '06, President
Alpha Phi 411 Thurston Avenue Jennifer Traina-Dorge '08, President *University-Owned Facility	Kappa Alpha Theta 519 Stewart Avenue Nicole Kravec '06, President	Sigma Delta Tau 115 Ridgewood Road Marci Ginsberg '07, President

## Appendix E: Summary of Chapter Evaluations

Fraternity and Sorority End of Year Chapter Ratings 66 chapters rated – One new colony not rated Three chapters not recognized or rated	# of Chapters Rated	% of Total Rated
<b>CATEGORY I</b> The chapter has exceeded the expectations outlined in <i>The Cornell Fraternity and Sorority System Strategic Plan</i> . Acacia, Alpha Chi Omega, Alpha Kappa Alpha, Delta Gamma, Delta Sigma Theta, Kappa Delta, Kappa Kappa Gamma, Lambda Chi Alpha, Lambda Pi Chi, Lambda Theta Phi, Omega Phi Beta, Phi Delta Theta, Phi Kappa Tau, Pi Beta Phi, Pi Delta Psi, Pi Kappa Phi, Psi Upsilon, Sigma Alpha Epsilon, Sigma Alpha Mu, Sigma Pi	20	30.3%
<b>CATEGORY II</b> The chapter has satisfactorily achieved or maintained the expectations outlined in <i>The Cornell Fraternity and Sorority System Strategic Plan</i> . Alpha Gamma Rho, Alpha Omicron Pi, Alpha Phi, Alpha Xi Delta, Alpha Zeta, Chi Psi, Delta Delta Delta, Delta Kappa Epsilon, Delta Upsilon, Kappa Alpha Theta, Kappa Phi Lambda, Kappa Sigma, Lambda Phi Epsilon, Lambda Theta Alpha, Phi Gamma Delta, Phi Sigma Kappa, Pi Kappa Alpha, Seal and Serpent, Sigma Chi, Sigma Chi Delta, Sigma Delta Tau, Sigma Gamma Rho, Sigma Lambda Upsilon, Sigma Nu, Sigma Phi, Theta Delta Chi, Zeta Beta Tau	27	40.9%
<b>CATEGORY III</b> The chapter has met the standards outlined in <i>The Cornell Fraternity and Sorority System Strategic Plan</i> with reservation. Alpha Delta Phi, Alpha Epsilon Phi, Alpha Kappa Delta Phi, Alpha Sigma Phi, Chi Phi, Delta Phi, Delta Tau Delta, Iota Phi Theta, Omega Psi Phi, Phi Kappa Psi, Tau Kappa Epsilon, Zeta Psi	12	18.2%
<b>CATEGORY IV</b> The chapter has not met the standards outlined in <i>The Cornell Fraternity and Sorority System Strategic Plan</i> .	3	4.5%
<b>CATEGORY V</b> The chapter failed to submit an End-of-Year Report.	4	6.1%
<b>Total</b>	<b>66</b>	<b>100.0%</b>

### Summary of Chapter Evaluations 2001-05 (I-High Rating, V-Low Rating)

2004-05 Evaluation (66 reviewed; 1 new colony not rated; 3 not recognized and not rated)		2003-04 Evaluation (65 reviewed, 3 new colonies not rated, 2 chapters not recognized or rated)	
I	30% (20)	I	28% (18)
II	41% (27)	II	25% (16)
III	18% (12)	III	29% (19)
IV	5% (3)	IV	8% (5)
V	6% (4)	V	11% (7)
2002-03 Evaluation (61 reviewed, 4 reorganized and 2 not recognized)		2001-02 Evaluation (62 reviewed and 5 not recognized and not rated)	
I	25% (15)	I	26% (16)
II	26% (16)	II	32% (20)
III	30% (18)	III	19% (12)
IV	10% (6)	IV	16% (10)
V	10% (6)	V	7% (4)



## Appendix F: Fraternity and Sorority Statistics

<b>Fraternity System Membership</b>	<b>2004-05</b>	<b>2003-04</b>	<b>2002-03</b>	<b>2001-02</b>	<b>2000-01</b>
Number of chapters	45	46	48	44	46
Total membership (including spring new members)	1,926	1,983	1,888	1,818	1,989
Total number of spring new members	586	652	447	524	523
Total number undergraduate men	6,875	6,895	6,988	7,153	7,108
Total number of first-year men	1,559	1,602	1,530	1,614	1,677
Percentage of undergraduate men in fraternities	28.01%	28.75%	27.02%	25.42%	27.98%
Average members per chapter (including new members)	43	43	40	41	43
<b>Fraternity System Housing</b>	<b>2004-05</b>	<b>2003-04</b>	<b>2002-03</b>	<b>2001-02</b>	<b>2000-01</b>
Number of chapter houses	42	38	40	40	41
Capacity	1,408	1,368	1,663	1,401	1,365
Occupancy	827	808	896	913	1,004
Average occupancy	20	21	22	23	24
Percentage occupancy	58.74%	59.06%	53.88%	65.17%	73.55%
Average rent	\$5,043	\$4,921	\$4,533	\$4,109	\$4,046
Average board	\$2,358	\$2,433	\$2,145	\$2,083	\$2,100

<b>Sorority System Membership</b>	<b>2004-05</b>	<b>2003-04</b>	<b>2002-03</b>	<b>2001-02</b>	<b>2000-01</b>
Number of chapters	21	21	21	21	19
Total membership (including spring new members)	1,468	1,569	1,553	1,568	1,630
Total number of spring new members	469	530	423	393	468
Total number undergraduate women	6,750	6,760	6,737	6,648	6,482
Total number of first-year women	1,495	1,533	1,473	1,502	1,530
Percentage of undergraduate women in fraternities	21.75%	23.10%	23.73%	23.59%	25.15%
Average members per chapter (including new members)	70	75	80	75	86
<b>Sorority System Housing</b>	<b>2004-05</b>	<b>2003-04</b>	<b>2002-03</b>	<b>2001-02</b>	<b>2000-01</b>
Number of chapter houses	12	11	13	13	13
Capacity	463	459	488	488	488
Occupancy	375	378	343	363	432
Average occupancy	31	34	26	28	33
Percentage occupancy	80.99%	82.35%	70.29%	74.39%	88.52%
Average rent	\$3,958	\$3,662	\$3,652	\$3,894	\$3,800
Average board	\$2,748	\$2,747	\$2,387	\$2,665	\$2,320

## Appendix G: Fraternity and Sorority Academic Data

Fraternity Chapter	Members	Spring 2005		Fall 2004	
		Semester GPA	Rank	Semester GPA	Rank
Acacia	29	3.432	6	3.409	7
Alpha Delta Phi	69	3.105	28	3.261	17
Alpha Epsilon Pi	Chapter Closed				
Alpha Gamma Rho	63	3.049	32	3.062	31
Alpha Phi Alpha	Chapter Closed				
Alpha Sigma Phi	56	3.367	10	3.428	5
Alpha Tau Omega	61	3.000	36	3.127	22
Alpha Zeta	24	2.886	41	3.319	13
Beta Theta Pi	51	3.451	2	3.329	12
Chi Phi	72	3.329	12	3.319	14
Chi Psi	47	3.136	24	3.018	33
Delta Chi	27	3.243	19	Chapter Closed	
Delta Kappa Epsilon	45	3.191	22	3.068	29
Delta Phi	41	3.249	16	3.333	11
Delta Tau Delta	27	3.138	23	3.107	26
Delta Upsilon	50	3.116	27	3.109	25
Iota Phi Theta	Less than 4 members				
Kappa Delta Rho	34	3.200	21	2.969	38
Kappa Sigma	42	3.245	18	3.42	6
Lambda Chi Alpha	58	3.118	26	3.091	27
Lambda Phi Epsilon	14	2.944	40	2.997	35
Lambda Theta Phi	Less than 4 members				
Lambda Upsilon Lambda	Chapter Closed				
Omega Psi Phi	Less than 4 members				
Phi Beta Sigma	Less than 4 members				
Phi Delta Theta	54	3.401	7	3.224	20
Phi Gamma Delta	53	3.053	31	2.943	39
Phi Kappa Psi	61	3.105	29	2.974	37
Phi Kappa Tau	51	3.503	1	3.497	3
Phi Sigma Kappa	56	3.212	20	3.283	16
Pi Delta Psi	17	3.036	34	3.127	23
Pi Kappa Alpha	56	3.321	13	3.452	4
Pi Kappa Phi	48	3.437	4	3.244	18
Psi Upsilon	57	3.047	33	3.067	30
Seal and Serpent	20	3.368	9	3.568	1
Sigma Alpha Epsilon	89	3.269	14	2.982	36
Sigma Alpha Mu	52	3.438	3	3.312	15
Sigma Chi	61	3.122	25	2.911	40
Sigma Chi Delta	8	2.971	38	3.082	28
Sigma Nu	61	2.955	39	3.013	34
Sigma Phi Society	47	3.081	30	3.135	21
Sigma Phi Epsilon	52	3.027	35	3.042	32

## Appendix G: Fraternity and Sorority Academic Data (continued)

Fraternity Chapter	Members	Spring 2005		Fall 2004	
		Semester GPA	Rank	Semester GPA	Rank
Sigma Pi	83	3.351	11	3.376	9
Tau Epsilon Phi	11	2.842	42	3.124	24
Tau Kappa Epsilon	34	3.246	17	3.232	19
Theta Chi	44	3.265	15	3.403	8
Theta Delta Chi	40	2.998	37	2.684	41
Zeta Beta Tau	51	3.433	5	3.539	2
Zeta Psi	29	3.400	8	3.372	10
<b>Summary</b>	<b>1,955</b>	<b>3.209</b>		<b>3.195</b>	

Sorority Chapter	Members	Spring 2005		Fall 2004	
		Semester GPA	Rank	Semester GPA	Rank
Alpha Chi Omega	104	3.479	3	3.554	1
Alpha Epsilon Phi	105	3.343	9	3.439	5
Alpha Kappa Alpha	7	3.489	2	3.352	9
alpha Kappa Delta Phi	16	3.237	13	3.221	13
Alpha Omicron Pi	85	3.194	15	3.207	14
Alpha Phi	143	3.392	5	3.449	4
Alpha Xi Delta	47	3.312	10	3.267	12
Chi Omega	Chapter Closed				
Delta Delta Delta	133	3.423	4	3.494	2
Delta Gamma	135	3.363	8	3.398	8
Delta Phi Epsilon	Chapter Closed				
Delta Sigma Theta	11	3.151	16	3.158	15
Kappa Alpha Theta	130	3.367	7	3.406	7
Kappa Delta	136	3.308	11	3.347	10
Kappa Kappa Gamma	135	3.270	12	3.281	11
Kappa Phi Lambda	19	2.906	18	2.942	16
Lambda Pi Chi	10	2.989	17	2.769	18
Omega Phi Beta	5	3.217	14	Less than 4 members	
Pi Beta Phi	128	3.389	6	3.424	6
Sigma Delta Tau	109	3.527	1	3.454	3
Sigma Gamma Rho	Less than 4 members				
Sigma Lambda Upsilon	Less than 4 members				
Zeta Phi Beta	Chapter Closed				
<b>Summary</b>	<b>1,471</b>	<b>3.354</b>		<b>3.387</b>	

All GPAs are calculated by dividing the sum of the chapter members' semester Cornell grade points by the sum of the chapter's semester credit hours. Organizations that haven't provided data are not included in the rankings. To maintain confidentiality, grades from chapters with less than 4 members are not shown.



## Appendix H: Fraternity and Sorority Community Service/Philanthropy

Chapter	# of Projects	Community Service # of Hours	Advocacy Hours	Total Hours	Chapter Philanthropy \$	Outside Chapter Philanthropy \$
<b>Interfraternity Council Chapters</b>						
Acacia	8	300	0	300	\$400	\$120
Alpha Delta Phi	2	122	0	122	\$4,500	\$100
Alpha Gamma Rho	2	60	0	60	\$0	\$0
Alpha Sigma Phi	4	71	27	98	\$0	\$471
Alpha Tau Omega	4	1,068	96	1,164	\$36,304	\$0
Alpha Zeta	4	190	0	190	\$800	\$0
Beta Theta Pi	No Data To Report					
Chi Phi	2	0	0	0	\$0	\$150
Chi Psi	6	219	72	290	\$310	\$280
Delta Kappa Epsilon	1	15	0	15	\$22,150	\$0
Delta Phi	4	255	130	385	\$1,200	\$40
Delta Tau Delta	2	36	0	36	\$330	\$50
Delta Upsilon	6	536	83	619	\$770	\$191
Kappa Delta Rho	No Data To Report					
Kappa Sigma	2	523	43	566	\$600	\$25
Lambda Chi Alpha	2	210	0	210	\$250	\$95
Phi Delta Theta	7	267	0	267	\$165	\$0
Phi Gamma Delta	0	0	0	0	\$0	\$0
Phi Kappa Psi	0	0	0	0	\$0	\$0
Phi Kappa Tau	25	1,170	0	1,170	\$2,834	\$248
Phi Sigma Kappa	1	60	138	198	\$1,000	\$50
Pi Kappa Alpha	3	161	66	227	\$300	\$200
Pi Kappa Phi	2	0	160	160	\$3,000	\$0
Psi Upsilon	4	170	40	210	\$18,000	\$300
Seal and Serpent	0	0	0	0	\$0	\$25
Sigma Alpha Epsilon	6	450	0	450	\$2,000	\$0
Sigma Alpha Mu	3	80	0	80	\$863	\$80
Sigma Chi	5	1,470	520	1,990	\$16,500	\$500
Sigma Chi Delta	5	45	0	45	\$1,087	\$0
Sigma Nu	4	60	80	140	\$0	\$230
Sigma Phi Epsilon	1	21	0	21	\$0	\$0
Sigma Phi Society	0	0	149	149	\$200	\$0
Sigma Pi	3	2,750	225	2,975	\$0	\$0
Tau Epsilon Phi	No Data To Report					
Tau Kappa Epsilon	3	194	80	274	\$5,015	\$0
Theta Chi	0	0	0	0	\$0	\$0
Theta Delta Chi	0	0	0	0	\$0	\$0
Zeta Beta Tau	7	895	70	965	\$2,088	\$650
Zeta Psi	0	0	80	80	\$4,200	\$0
<b>IFC Total</b>	<b>128</b>	<b>11,397</b>	<b>2,059</b>	<b>13,455</b>	<b>\$124,866</b>	<b>\$3,805</b>

## Appendix H: Fraternity and Sorority Community Service/Philanthropy (continued)

Chapter	# of Projects	Community Service # of Hours	Advocacy Hours	Total Hours	Chapter Philanthropy \$	Outside Chapter Philanthropy \$
<b>Panhellenic Association Chapters</b>						
Alpha Chi Omega	7	708	104	812	\$1,200	\$200
Alpha Epsilon Phi	2	132	47	179	\$1,613	\$247
Alpha Omicron Pi	6	395	515	910	\$1,500	\$500
Alpha Phi	3	227	90	317	\$6,358	\$1,700
Alpha Xi Delta	7	24	0	24	\$675	\$0
Delta Delta Delta	2	54	35	89	\$1,320	\$600
Delta Gamma	2	455	75	530	\$1,175	\$40
Kappa Alpha Theta	13	154	0	154	\$2,830	\$0
Kappa Delta	9	498	500	998	\$6,684	\$255
Kappa Kappa Gamma	5	110	22	132	\$7,250	\$0
Pi Beta Phi	4	480	240	720	\$1,400	\$1,200
Sigma Delta Tau	1	60	0	60	\$2,708	\$40
<b>Panhellenic Association Total</b>	<b>61</b>	<b>3,296</b>	<b>1,628</b>	<b>4,923</b>	<b>\$34,713</b>	<b>\$4,782</b>
<b>Multicultural Greek Letter Council Chapters</b>						
Alpha Kappa Alpha	4	131	182	313	\$184	\$2
alpha Kappa Delta Phi	13	313	140	453	\$560	\$30
Delta Sigma Theta	8	242	209	451	\$470	\$0
Iota Phi Theta	0	148	0	148	\$0	\$0
Kappa Phi Lambda	10	301	184	485	\$483	\$0
Lambda Phi Epsilon	7	379	0	379	\$750	\$0
Lambda Pi Chi	8	158	46	204	\$115	\$2,500
Lambda Theta Alpha	11	53	0	53	\$800	\$0
Lambda Theta Phi	7	47	42	89	\$50	\$44
Omega Phi Beta	7	67	24	91	\$50	\$42
Omega Psi Phi	4	90	34	124	\$2,000	\$0
Phi Beta Sigma	No Data To Report					
Pi Delta Psi	8	302	195	497	\$300	\$0
Sigma Gamma Rho	0	0	0	0	\$0	\$0
Sigma Lambda Upsilon	0	0	4	4	\$35	\$5
<b>MGLC Total</b>	<b>87</b>	<b>2,231</b>	<b>1,060</b>	<b>3,290</b>	<b>\$5,797</b>	<b>\$2,623</b>
<b>System Totals</b>	<b>276</b>	<b>16,923</b>	<b>4,746</b>	<b>21,668</b>	<b>\$165,377</b>	<b>\$11,210</b>

## Appendix I: Judicial Update

### Judicial Complaints Summary

The judicial process is self-governed. Council officers partner with the Office of Fraternity and Sorority Affairs to resolve cases of alleged chapter misconduct. Cases are either referred to a student judicial board or resolved informally by a meeting with the Associate Dean and the governing council's Vice President for Judicial. Cases involving allegations of individual misconduct are referred to the Office of the Judicial Administrator. Below is a four-year summary of the judicial complaints that came before the fraternity and sorority judicial system.

TYPE	Fall 2004	Spring 2005	2004-05	Fall 2003	Spring 2004	2003-04	Fall 2002	Spring 2003	2002-03	Fall 2001	Spring 2002	2001-02
Social	19	18	37	21	13	34	39	43	82	17	23	40
Property Destruction	5	0	5	2	2	4	5	11	16	0	0	0
Hazing	2	1	3	3	8	11	3	9	12	4	18	22
Physical Fighting	0	0	0	1	0	1	3	1	4	1	0	1
Harassment	1	0	1	2	2	4	2	2	4	1	1	2
Theft	0	1	1	1	1	2	1	1	2	1	2	3
Sexual Assault	1	1	2	1	0	1	0	2	2	0	0	0
Expectations for Membership	0	3	3	Data Not Collected								
Recruitment Violations	1	0	1	Data Not Collected								
Bias Report	1	4	5	0	1	1	0	0	0	0	0	0
<b>TOTALS</b>	<b>30</b>	<b>28</b>	<b>58</b>	<b>31</b>	<b>27</b>	<b>58</b>	<b>53</b>	<b>69</b>	<b>122</b>	<b>24</b>	<b>44</b>	<b>68</b>

### Social Registration Summary

The chart below indicates the percentage of social events registered with the Office of Fraternity and Sorority Affairs that resulted in a complaint.

Year	Total Number of Registered Social Events	Social Events Resulting in a Complaint
2002-03	223	82 (37%)
2003-04	158	34 (22%)
2004-05	251	37 (15%)



# SUPPORT

Creative Ways to Give

## Opportunities to Give

The generosity of students, alumni, parents, and friends is essential to the development of quality programming and community-wide leadership activities for our fraternity and sorority system. Donations made to a fund listed below are tax deductible and receive Cornell University reunion and class gift recognition credit.

### **Associate Dean's Fraternity and Sorority Leadership Fund (fund number 538610)**

This fund supports the overall Greek System and the Interfraternity, Panhellenic, and Multicultural Greek Letter Councils.

### **Robert G. Engel Memorial Endowment (fund number 908318)**

This fund supports Greek Life programming and student leadership training.

### **Robert G. Engel Associate Dean and Director of Fraternity and Sorority Affairs (fund number 655112)**

Engel "Associate Dean" endowment supports the staffing and programming of the Office of Fraternity and Sorority Affairs.

### **Creating Chapters of Excellence Program (fund number 479829)**

Established in 2003 as a pilot program, currently with fourteen chapters participating, to enhance mentoring opportunities and programmatic activities in the Greek community. The program is expanding to include the entire Greek community and serves as the "Greek version" of the Campus Residential Initiative.

### **Jarett F. '80 and Younghee Kim Wait Fund for Greek Excellence (fund number 0001390)**

An endowment fund to support the professional and leadership opportunities for fraternity and sorority members, promote faculty involvement with Greek organizations through intellectual and cultural activities, develop collaborative and multicultural programs within the Greek community to foster a greater awareness and respect for diversity, and to co-sponsor student-initiated programs to encourage civic responsibility both on and off campus.

### **Robert W. Selander '72 Emerging Leaders Fund (fund number 0000479)**

This program endowment fund was established in December 2003 through a gift from Robert W. Selander '72 (Sigma Chi) to support leadership development initiatives. This program includes an annual Emerging Leaders' Retreat.

### **Multicultural Greek Letter Council Gift Fund (fund number 333521)**

Established in 2001 to allow alumni to provide financial programming assistance to the Multicultural Greek Letter Council.

### **Order of Omega Gift Fund (fund number 0001704)**

The Order of Omega is Cornell's only Greek Honor Society and seeks to honor Greek leaders while creating and implementing programs that promote the overall development of members from the entire Greek community. As of May 1, 2005, the society had 101 active members and they continue to execute meaningful and effective educational programs and presentations.

Gifts can be mailed to:

Cornell University  
Alumni Affairs and Development  
PO Box 2600  
Ithaca, NY 14851

For tax credit purposes, checks should be made payable to "Cornell University". On the memo line of the check, please specify the gift fund name and number as noted above.

Gifts can also be made on-line at: [https://www.alumni.cornell.edu/secure/giving/online\\_giving.cfm](https://www.alumni.cornell.edu/secure/giving/online_giving.cfm)

Please choose "Student and Academic Services" from the first pull down menu and enter the name of the fund and fund number on the "other gift designation" line.

# Scholarship



# Leadership



# Friendship



## *Fraternity and Sorority Affairs*

541 Willard Straight Hall

Tel. 607 255-2310

Fax. 607 254-4734

Email. [greeks@cornell.edu](mailto:greeks@cornell.edu)

This publication was produced by the Dean of Students Office of Fraternity and Sorority Affairs. Cornell University™ is an equal-opportunity, affirmative action educator and employer.

Printed on recycled paper.  
lbd 11/05 2M AP

[www.greeks.cornell.edu](http://www.greeks.cornell.edu)