



FACT SHEET

WORLD SCOUTING MEMBERSHIP 1990-2000

Over the last ten years, the World Organization of the Scout Movement has continued to grow, both in terms of the number of National Scout Organizations, and the number of individual members in those Organizations.

This document looks at some key membership statistics from 1990 to 2000. These include membership trends worldwide, in each region, in the largest organizations, and in associations with high and low levels of per-capita income.

The current list of National Scout Organizations and associations can be found at:

<http://www.scout.org/wso/links.html>

And the total membership of each National Scout Organization can be found at:

<http://www.scout.org/wso/countries.html>

Chart 1 Membership 1990-2000

This graph shows World Scouting membership over this period.

- *WOSM members* comprise all youth sections (Pre-Cubs, Cubs, Scouts, Senior Scouts and Rovers) as well as volunteer leaders and professional executives in National Scout Organizations (NSOs).
- *Total membership* comprises WOSM members plus committee / council members and support staff in NSOs.

Until the mid 1990s, the total membership shown for some NSOs also included females who were registered with the World Association of Girl Guides and Girl Scouts (WAGGGS). That is to say, some NSOs, mostly in Europe, register their boys with WOSM and girls with WAGGGS.

The membership numbers shown since the mid 1990s represent only WOSM members, *boys and girls, youth and adults*.

Chart 2 Membership 1990-2000 by Region

In accordance with the WOSM Constitution (Chap. VII Art. XIX), National Scout Organizations are grouped into regions. There are presently 6 *Regions* : Africa, Arab, Asia-Pacific, Eurasia, Europe, Interamerica).

Chart 3 Membership 1990 – 2000 in the six largest Organizations

NSOs in six countries comprise about 85% of WOSM's individual members in 2000: Bangladesh, India, Indonesia, Philippines, Thailand, and USA. Their membership over 10 years is shown on this chart.

The reasons for the two major jumps (in 1995 and in 1996) are as follows:

- In 1995, after a thorough review of the characteristics of its membership, Gerakan Pramuka (Indonesia) extended its definition of membership to include all young people who were participating in the Scout programme, and not only those who had made their Scout Promise.
- In 1996, the Boy Scout of America decided to include within its membership all boys and girls registered in their school-based "Learning for Life" programme.

Chart 4 Membership 1990 – 2000 by level of GNP per capita

The World Bank defines four categories of economies based on Gross National Product (GNP) per capita.

The WOSM registration fee system uses these categories to determine the registration fee due from each NSO, thus insuring that the fee fairly reflects the economy of each country.

During the 10 years, Scouting countries in each category have shown an overall increase in membership.

Chart 5 Membership 1990 – 2000 in countries with low GNP per capita (Category A)

The important increase in the membership of the NSOs belonging to category A is mainly due to the increase in membership of the Gerakan Pramuka in Indonesia.

Chart 6 Membership 1990 – 2000 in countries with high GNP per capita (Category D)

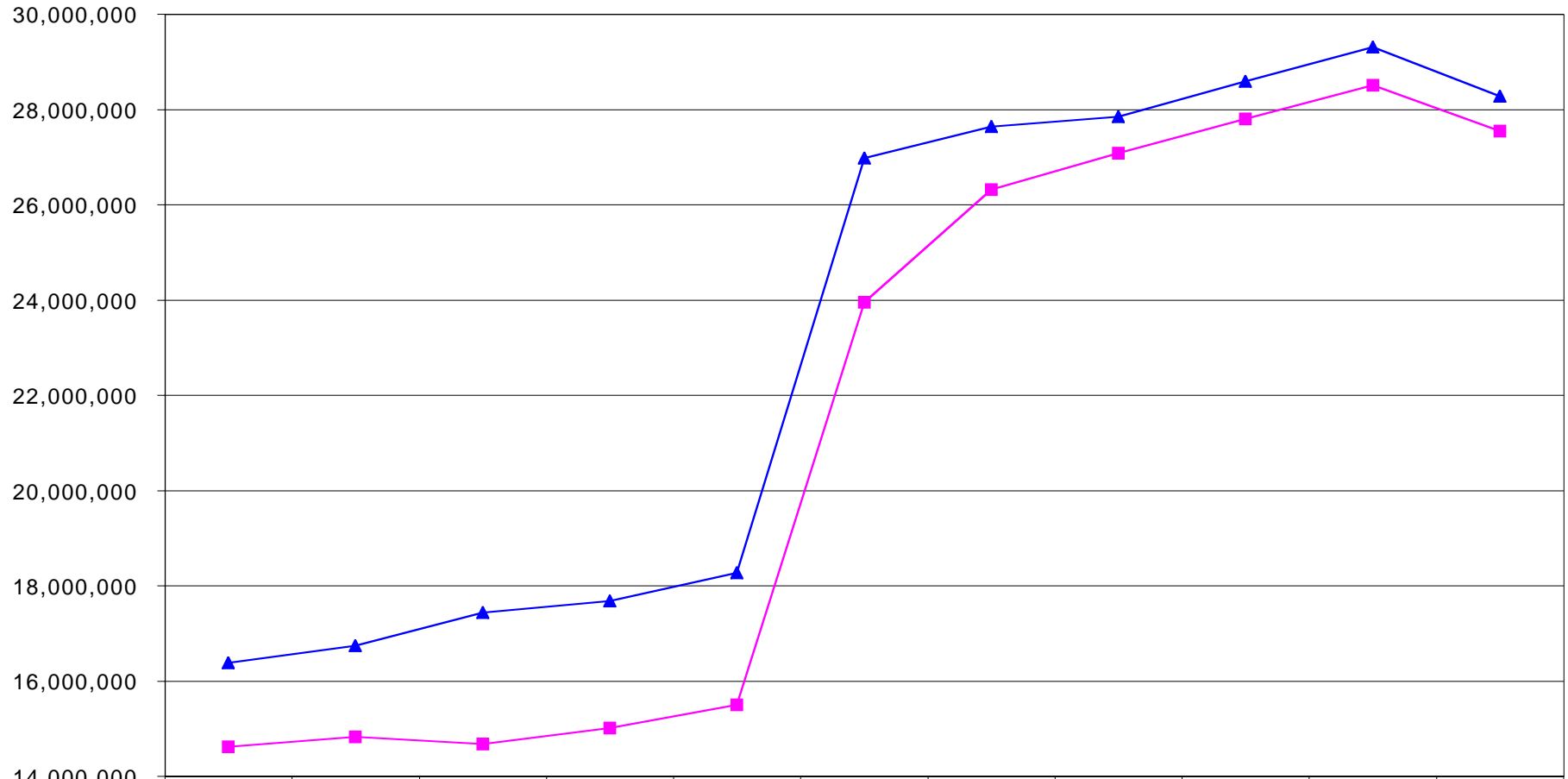
The global increase in membership of NSOs belonging to category D is essentially due to the increase in the membership of the Boy Scouts of America (BSA). If one excludes the BSA figure, the membership of this category shows a slight decrease during the period under review.

Chart 7 Membership 1990 – 2000: Number of Organizations by Region

During the 10 years, 7 NSOs lost their membership with WOSM, and 28 new NSOs were recognised, most of them in the European and Eurasian Scout Regions due to the birth and rebirth of Scouting in formerly Communist countries.

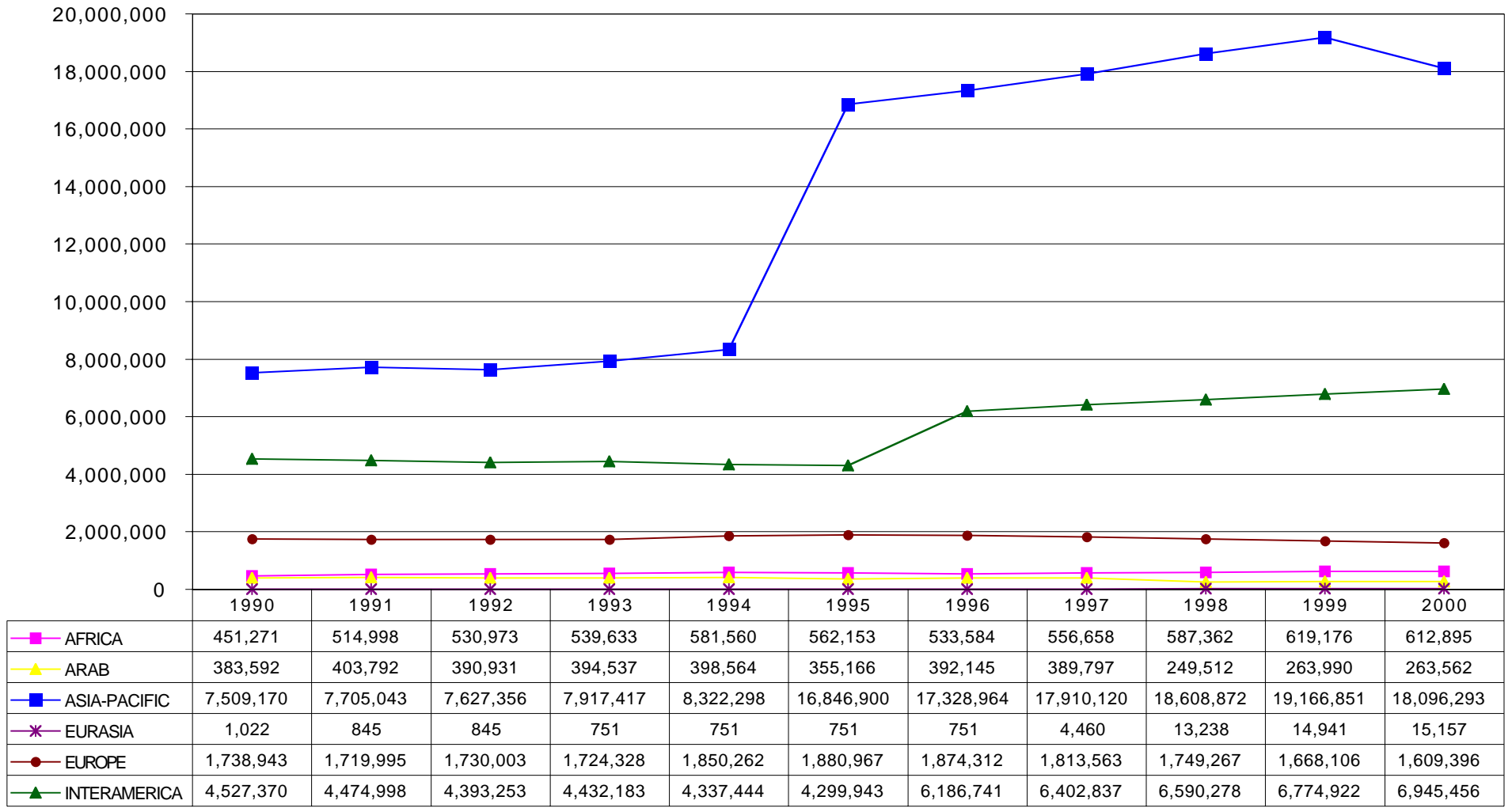
(Note: the Eurasia Region was created in 1997, yet the chart shows it having one member in 1990 and 1995; this was the small Armenian Scout organization based in Paris, which was part of the European region before a National Scout Organization was created and recognized within Armenia.

Membership 1990 - 2000

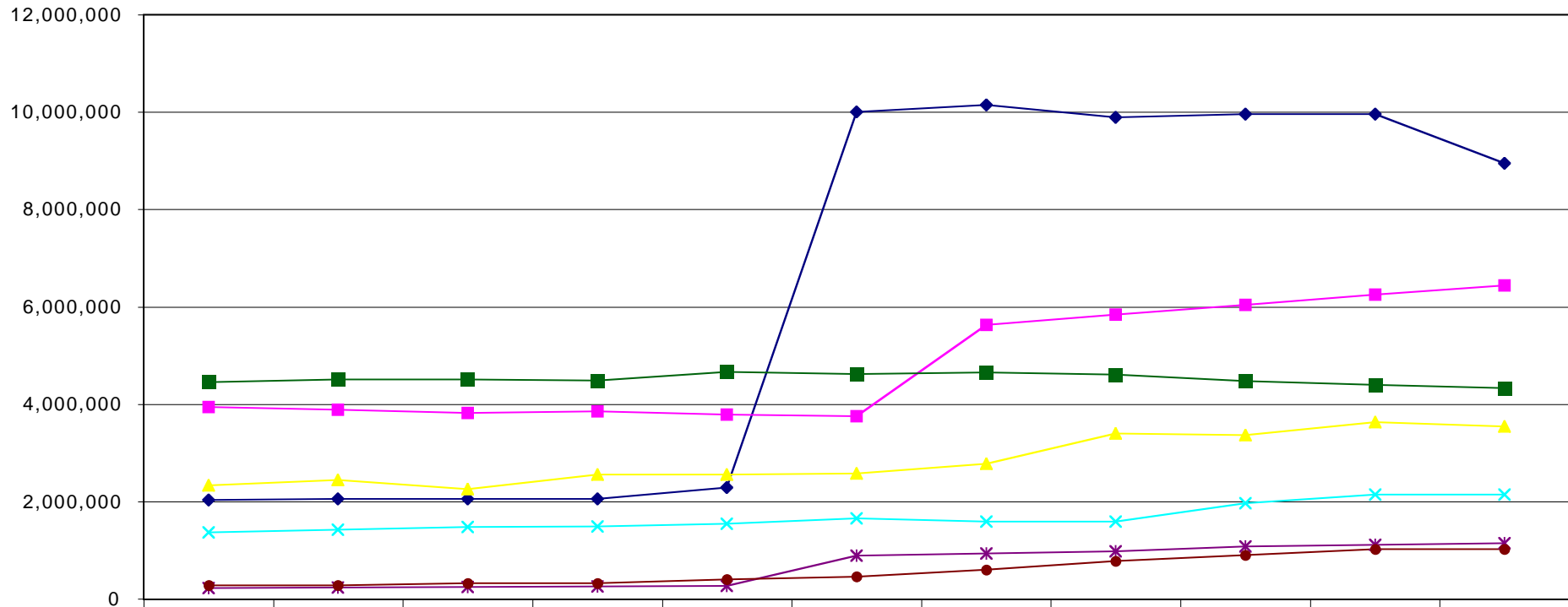


	1990	1991	1992	1993	1994	1995	1996	1997	1998	1999	2000
■ WOSM members	14,611,368	14,819,671	14,673,361	15,008,849	15,490,879	23,945,880	26,316,497	27,077,435	27,798,529	28,507,986	27,542,759
▲ Total membership	16,378,176	16,741,623	17,436,385	17,679,695	18,261,024	26,969,412	27,636,301	27,839,340	28,585,751	29,305,842	28,275,554

Membership 1990 - 2000 by Region

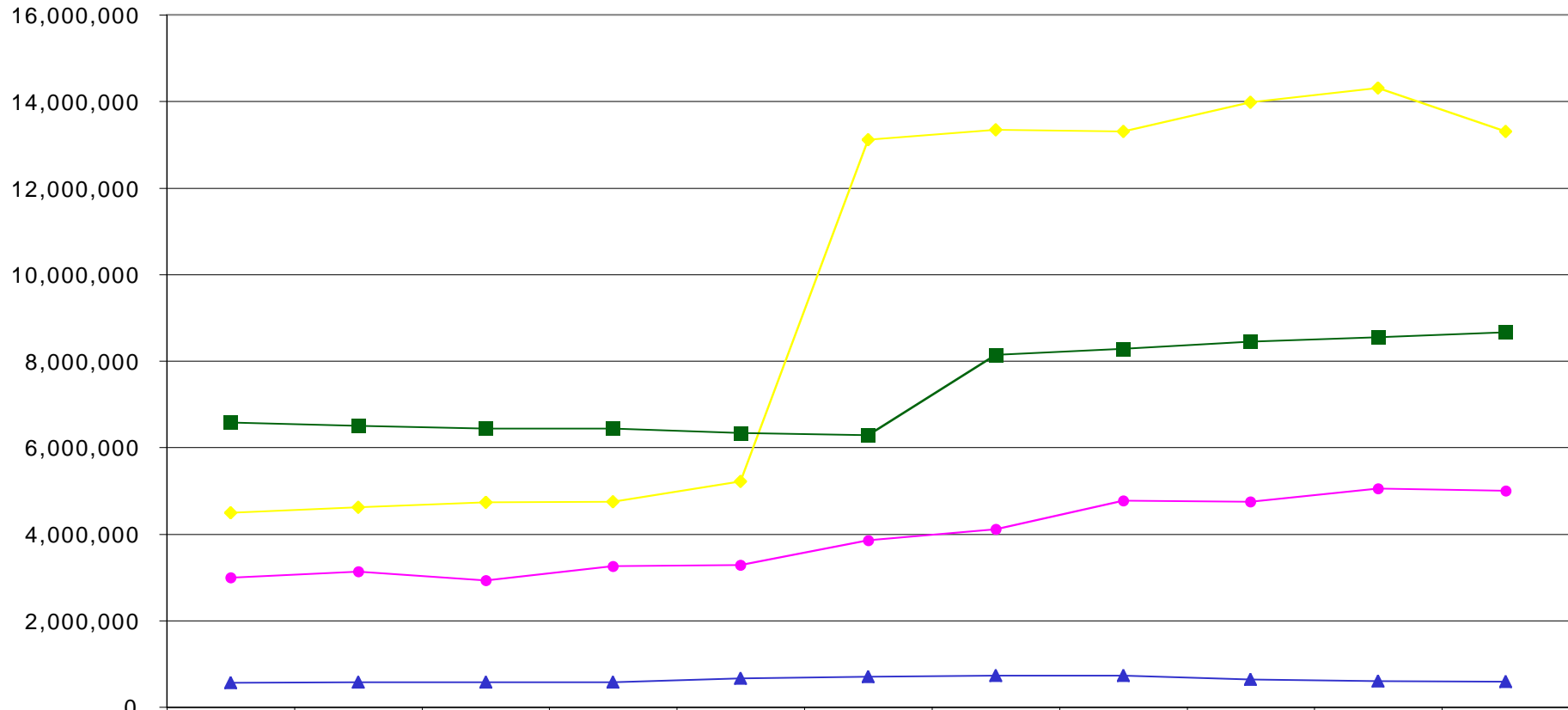


Membership 1990 - 2000 in the largest Organizations



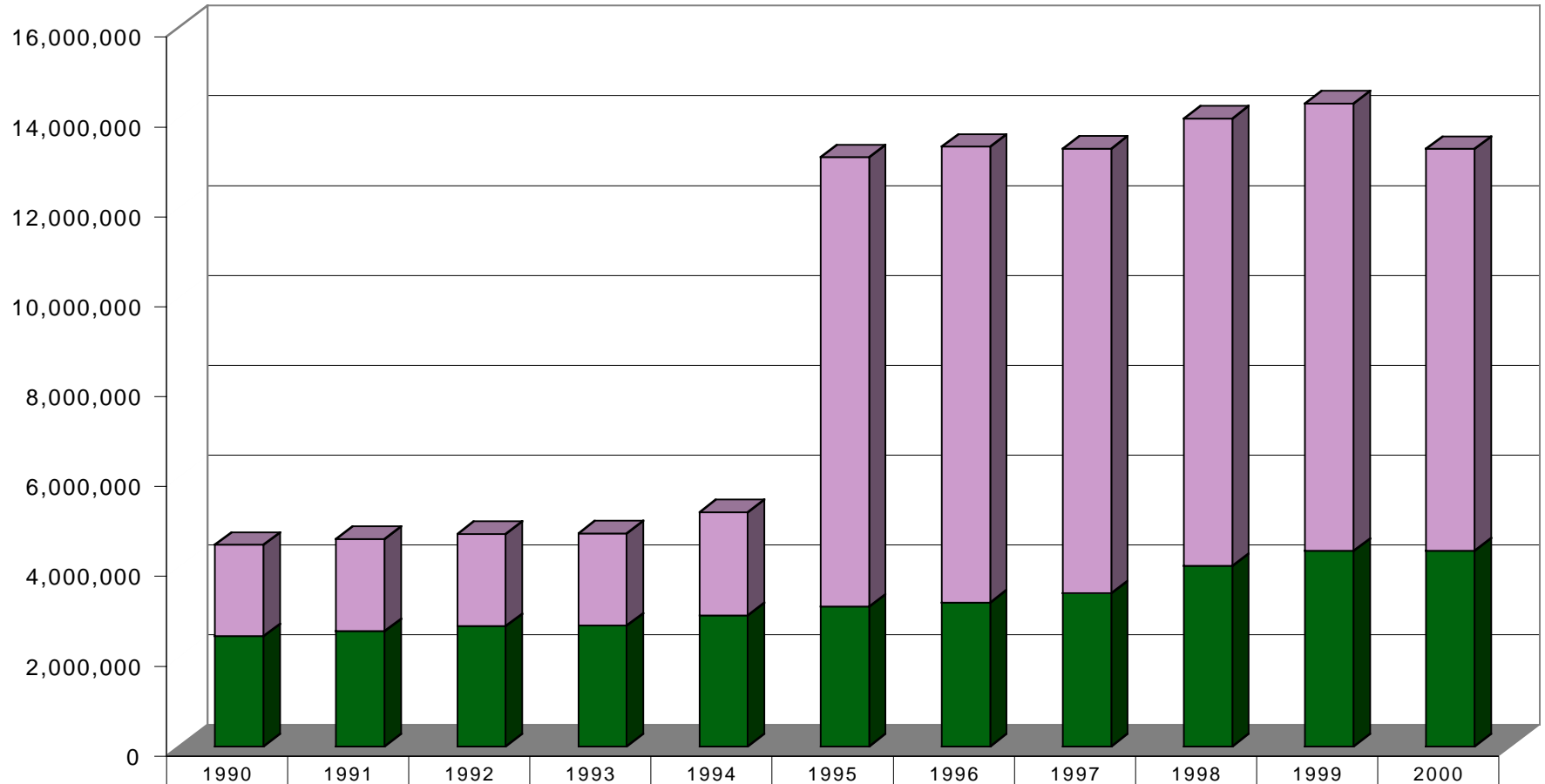
	1990	1991	1992	1993	1994	1995	1996	1997	1998	1999	2000
◆ Indonesia	2,036,995	2,056,320	2,056,320	2,056,320	2,291,307	10,000,000	10,141,036	9,895,834	9,961,471	9,961,471	8,942,862
■ U.S.A.	3,936,601	3,881,440	3,817,574	3,854,056	3,781,202	3,756,467	5,632,897	5,838,868	6,044,070	6,253,606	6,434,979
▲ Philippines	2,327,169	2,443,073	2,252,958	2,550,679	2,550,941	2,574,585	2,774,398	3,392,447	3,368,731	3,629,556	3,536,666
× India	1,369,919	1,425,000	1,481,577	1,482,468	1,538,116	1,651,659	1,584,236	1,584,236	1,963,266	2,137,580	2,137,580
* Thailand	216,951	229,200	241,986	255,067	268,924	890,138	934,645	981,272	1,078,392	1,108,931	1,144,707
● Bangladesh	274,910	280,050	320,702	320,702	394,610	456,361	596,448	775,407	903,727	1,018,850	1,018,850
■ Other NSOs	4,448,823	4,504,588	4,502,244	4,489,557	4,665,779	4,616,670	4,652,837	4,609,371	4,478,872	4,397,992	4,327,115

Membership 1990 - 2000 by level of GNP per capita



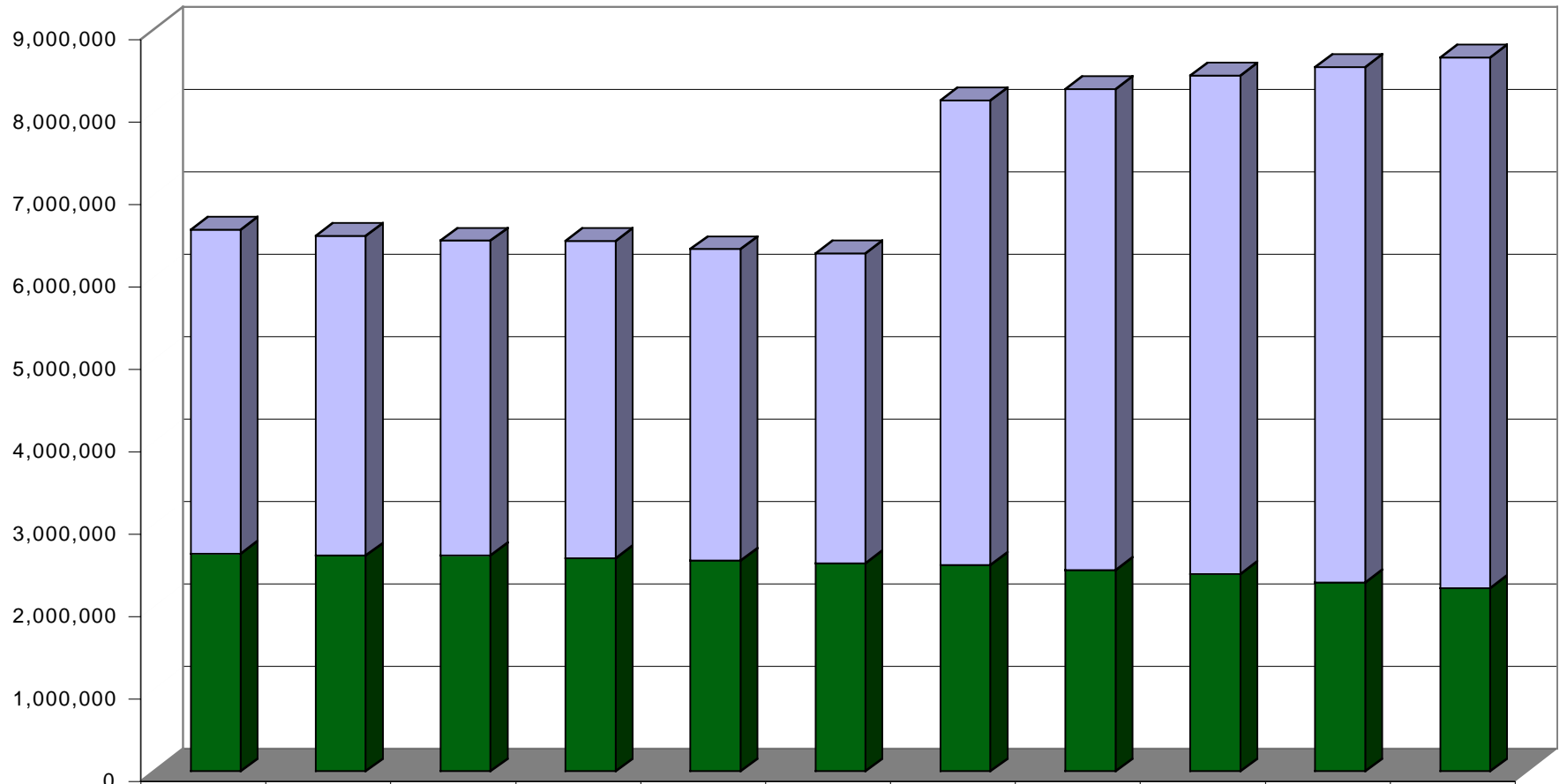
	1990	1991	1992	1993	1994	1995	1996	1997	1998	1999	2000
◆ Low (A)	4,489,314	4,621,425	4,732,386	4,744,059	5,211,262	13,110,993	13,345,612	13,303,442	13,976,479	14,311,841	13,298,789
● Lower Middle (B)	2,983,218	3,128,501	2,930,532	3,249,755	3,277,566	3,856,697	4,104,079	4,771,400	4,742,236	5,051,889	4,996,469
▲ Upper Middle (C)	564,472	572,124	571,734	578,008	666,381	696,206	727,520	723,156	639,002	601,666	588,505
■ High (D)	6,574,364	6,497,621	6,438,709	6,437,027	6,335,670	6,281,984	8,139,286	8,279,437	8,440,812	8,542,590	8,658,996

Membership 1990 - 2000 in countries with Low GNP per capita (A)



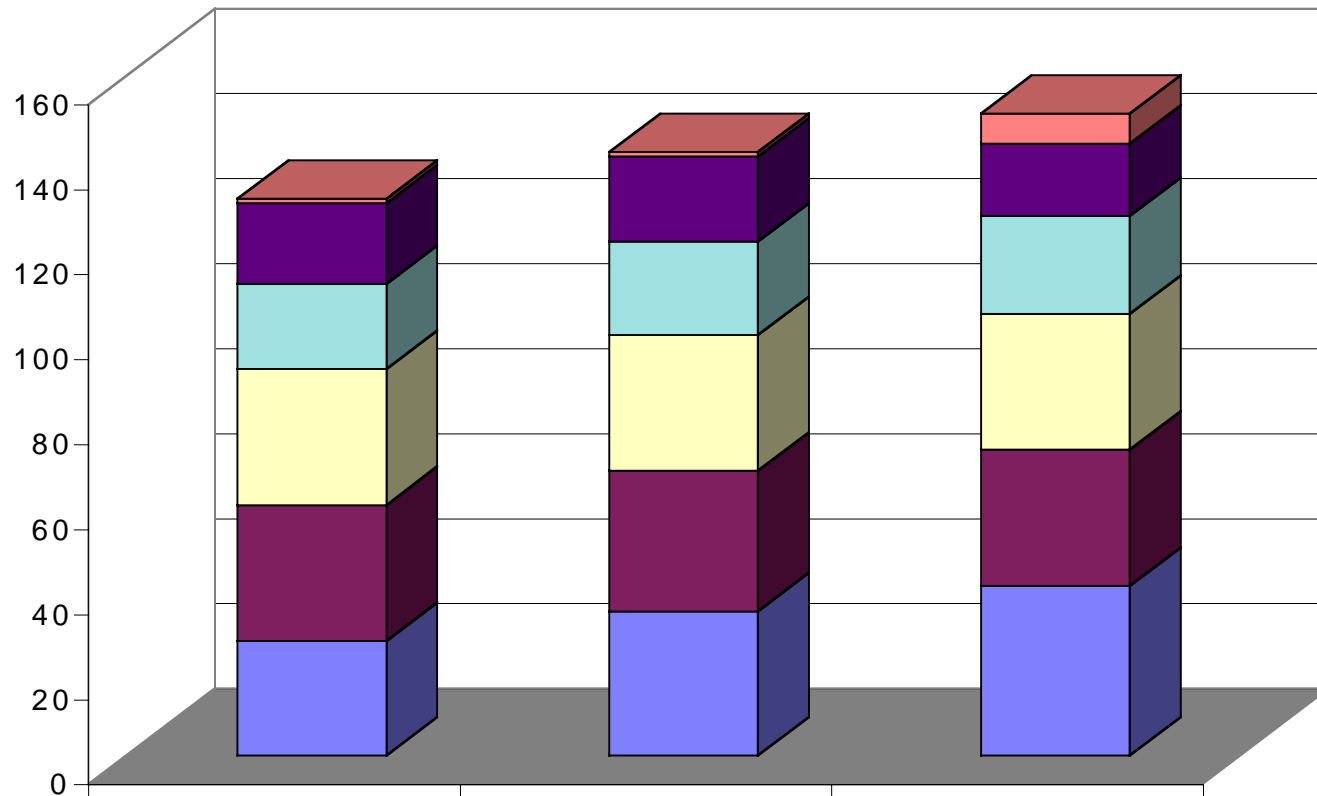
Indonesia	2,036,995	2,056,320	2,056,320	2,056,320	2,291,307	10,000,000	10,141,036	9,895,834	9,961,471	9,961,471	8,942,862
Low GNP without Indonesia	2,452,319	2,565,105	2,676,066	2,687,739	2,919,955	3,110,993	3,204,576	3,407,608	4,015,008	4,350,370	4,355,927

Membership 1990 - 2000 in countries with High GNP per capita (D)



	1990	1991	1992	1993	1994	1995	1996	1997	1998	1999	2000
■ U.S.A.	3,936,601	3,881,440	3,817,574	3,854,056	3,781,202	3,756,467	5,632,897	5,838,868	6,044,070	6,253,606	6,434,979
■ High GNP without U.S.A.	2,637,763	2,616,181	2,621,135	2,582,971	2,554,468	2,525,517	2,506,389	2,440,569	2,396,742	2,288,984	2,224,017

Membership 1990 - 2000 Number of Organizations by Region



	1990	1995	2000
EURASIA	1	1	7
ARAB	19	20	17
ASIA-PACIFIC	20	22	23
INTERAMERICA	32	32	32
AFRICA	32	33	32
EUROPE	27	34	40