

Electronic  
Information  
Services  
James's



**User Guide**  
**Installation**

Verity Inc.

CD Publisher Agreement

Jane's EIS Software License

This is a legal agreement between you (customer) and Jane's Information Group. By opening the sealed software packages and/or by using the SOFTWARE you agree to be bound by the terms of this Agreement. If you do not agree to the terms of the Agreement, promptly return the disk package and accompanying items (including printed materials and binders or other containers) to the place you obtained them.

1. **GRANT OF LICENSE FOR DEMONSTRATION USE.** Jane's grants to you the personal, non-transferable, non-exclusive right to use and to display one copy of the software included on the CD-ROM and any accompanying materials (the "Software") for purposes of internal use only. You may use the software on only one computer at any time, which use may include loading the Software into temporary memory (i.e. RAM) or installing the software into the permanent memory (e.g. hard disk) of that computer. Under this license, you MAY NOT (i) distribute the Software; (ii) use the Software for any other purpose other than internal use; or (iii) modify the Software.

2. **COPYRIGHT.** The Software is owned by Jane's or its suppliers and is protected by United States copyright laws and international treaty provisions. You may not remove the copyright notice from the Software or the written materials, if any, accompanying the Software.

3. **OTHER RESTRICTIONS.** This Jane's License Agreement is your proof of license to exercise the rights granted herein and must be retained by you. You may not sublicense, rent or lease the Software. You may not reverse engineer, decompile or disassemble the Software except to the extent such foregoing restriction is expressly prohibited by applicable law.

4. **NO WARRANTY.** ANY USE BY YOU OF THE SOFTWARE IS AT YOUR OWN RISK. THE SOFTWARE IS PROVIDED FOR USE "AS IS" WITHOUT WARRANTY OF ANY KIND. TO THE MAXIMUM EXTENT PERMITTED BY LAW JANE'S AND ITS SUPPLIERS DISCLAIM ALL WARRANTIES OF ANY KIND, EITHER EXPRESS, STATUTORY OR IMPLIED, INCLUDING, WITHOUT LIMITATION ANY IMPLIED WARRANTIES OF MERCHANTABILITY, FITNESS FOR A PARTICULAR PURPOSE AND NONINFRINGEMENT. JANE'S IS NOT OBLIGATED TO PROVIDE ANY UPDATES TO THE SOFTWARE.

5. **NO LIABILITY FOR DAMAGES.** In no event shall Jane's or its suppliers be liable for any damages whatsoever (including, without limitation, incidental, direct, indirect, special and consequential damages, damages for loss of business profits, business interruption, loss of business information, or other pecuniary loss) arising out of the use or inability to use this Jane's product, even if advised of the possibility of such damages, the above limitation may not apply to you.

6. **GOVERNING LAW.** This agreement is governed by the laws of California without application of the principles of conflicts of law.

7. **THIRD PARTY BENEFICIARIES.** You are hereby notified that persons and entities which have licensed software to Jane's for inclusion in the CD/DVD-ROM and the software are third party beneficiaries to this Agreement as it applies to their respective software product(s) included in the Software.

8. **PREVAILING AGREEMENT.** In the event of any conflict between the terms and conditions of this Agreement and the terms and conditions of any license agreements appearing with or in the software products comprising the Software, this Agreement shall prevail.

9. **EXPORT.** You agree that you will not export or re-export the Software without the appropriate United States or foreign government licenses.

10. **US GOVERNMENT RESTRICTED RIGHTS.** If the Products are acquired under the terms of a proposal or agreement with the United States Government or any contractor therefore, the Products are subject to the following: (a) For acquisition by or on behalf of civilian agencies, as necessary to obtain protection as "commercial computer software" and related documentation in accordance with the terms of this Commercial Software Agreement as specified in 48 C.F.R. 12.212 of the Federal Acquisition Regulations and its successors; (b) For acquisition by or on behalf of units of the Department of Defense ("DoD") as necessary to obtain protection as "commercial computer software" and related documentation in accordance with the terms of this commercial computer software license as specified in 48 C.F.R. 227-7202-2 of the DoD F.A.R Supplement and its successors.

**Table of Contents**

<b><u>Section Number</u></b>	<b><u>Section Title</u></b>	<b><u>Page Number</u></b>
1.0	<a href="#"><u>Introduction</u></a>	5
2.0	<a href="#"><u>Installation</u></a>	6
2.1	<a href="#"><u>New Install</u></a>	6
2.1.1	<a href="#"><u>Windows</u></a>	6
2.1.1.1	<a href="#"><u>Running EIS from CD/DVD</u></a>	6
2.1.1.2	<a href="#"><u>Install EIS on Your Local Drive</u></a>	9
2.1.1.3	<a href="#"><u>Install EIS on a Network Drive</u></a>	12
2.1.2	<a href="#"><u>Unix</u></a>	13
2.1.2.1	<a href="#"><u>Running EIS from CD/DVD</u></a>	13
2.1.2.2	<a href="#"><u>Install EIS in Your Home Directory</u></a>	13
2.1.2.3	<a href="#"><u>Install EIS on a Shared Directory</u></a>	17
2.2	<a href="#"><u>Update Install</u></a>	18
2.2.1	<a href="#"><u>Windows</u></a>	18
2.2.1.1	<a href="#"><u>Running an EIS Update from CD/DVD</u></a>	18
2.2.1.2	<a href="#"><u>Installing an EIS Update on Your Local Drive</u></a>	18
2.2.1.3	<a href="#"><u>Install an EIS Update on a Network Drive</u></a>	20
2.2.2	<a href="#"><u>Unix</u></a>	21
2.2.2.1	<a href="#"><u>Running an EIS Update from CD/DVD</u></a>	21
2.2.2.2	<a href="#"><u>Installing an EIS Update in Your Home Directory</u></a>	21
2.2.2.3	<a href="#"><u>Install an EIS Update on a Shared Directory</u></a>	21
2.3	<a href="#"><u>Uninstall</u></a>	22
2.3.1	<a href="#"><u>Windows</u></a>	22
2.3.1.1	<a href="#"><u>Uninstall EIS When Running EIS from CD/DVD</u></a>	22
2.3.1.2	<a href="#"><u>Uninstalling EIS from Your Local Drive</u></a>	22
2.3.1.3	<a href="#"><u>Uninstall EIS from a Network Drive</u></a>	22

2.3.2	<a href="#">Unix</a>	23
2.3.2.1	<a href="#">Uninstall EIS When Running EIS from CD/DVD</a>	23
2.3.2.2	<a href="#">Uninstalling EIS from Your Home Directory</a>	23
2.3.2.3	<a href="#">Uninstall EIS from a Shared Directory</a>	23
3.0	<b><a href="#">Support</a></b>	24
3.1	<a href="#">Contact Details</a>	24
3.2	<a href="#">Supported Platforms</a>	26
3.3	<a href="#">Frequently Asked Questions</a>	26
3.4	<a href="#">Glossary</a>	27

## 1.0 Introduction

Welcome to the EIS User Guide. This guide is intended to:

- Assist you with installing, maintaining, and uninstalling EIS
- Be a starting point for using Search and Browse, and associated tools
- Provide you with contact points at Jane's for assistance, or for giving feedback
- Keep you aware of any changes to the service such as updates and improvements

Throughout this guide there are hyperlinked words in italics. Explanations for these words can be found in the [glossary](#) at the end of this document. Click on the italicized hyperlink to jump to the relevant entry in the glossary. Word users should click on the back button on the toolbar as identified in Figure 1 below, to return to your last location.

Figure 1



### Important Note

From now on, all customers will be receiving a full set of data with each monthly update. Previously only if a publication had new or updated data since the previous month, would it be delivered to you in a monthly update. This means that you will now receive all of your publications in each update, even if the content has not changed since the previous month.

As our publications are continually updated throughout the year, you will hardly notice any change in terms of the number of discs delivered each month.

Should you need to reinstall EIS in the future, you will no longer need to install the data onto your system from each monthly update, as the latest update contains everything. Were you to fail to install a particular month's update, it will not matter as you can simply install the next update when you receive it.

If you have any queries, please don't hesitate to [contact us](#).

Thank you.

Jane's Information Group  
April 10, 2003

## 2.0 Installation

The instructions in this section cover a new *install*, an install following receipt of your latest *updates*, and the procedures for *uninstalling* EIS. These three areas are also broken down into *standalone* and *network* environments, and what to do if you run EIS directly from the CD/DVD.

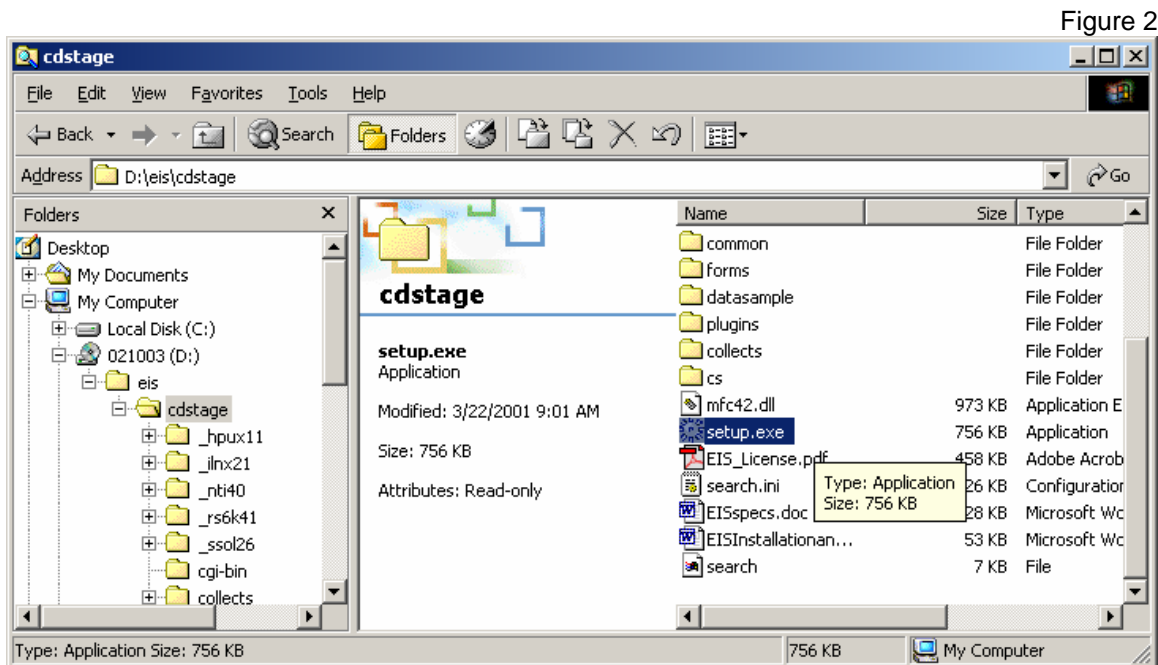
### 2.1 New Install

#### 2.1.1 Windows

##### 2.1.1.1 Running EIS from CD/DVD

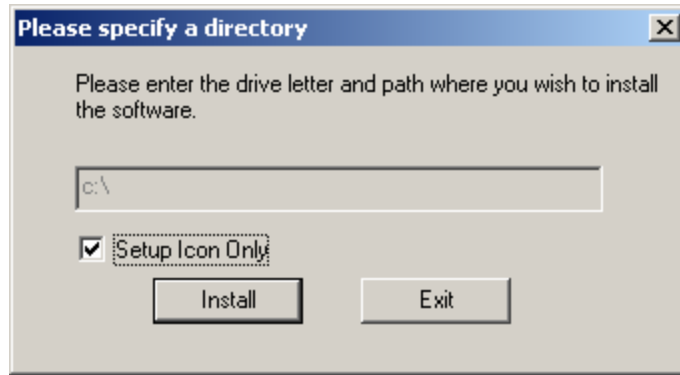
- If you want to run EIS leaving the application and data files on CD/DVD, you can do so, but as your data may be split across a number of discs, it is only recommended for those who have a single disc, or sample disc. To *install* EIS to run from your local drive, see section [2.1.1.2](#).

- To *install* your EIS application to run from the CD/DVD on your chosen workstation, insert the CD or DVD, and from the /eis/cdstage/ directory, double-click setup.exe, as shown in Figure 2.



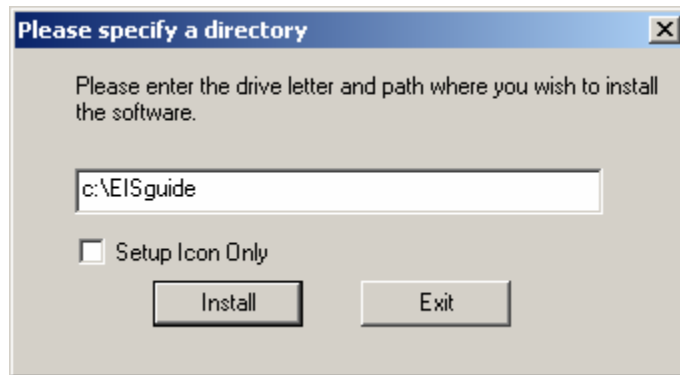
- This will launch the dialog box shown in Figure 3, prompting you to click *Install* or *Exit*. By *default*, the installation will take place at the root of your C:\ drive, and will create a shortcut icon to launch the application.

Figure 3



3. To change the location of the installation, to another drive or directory for example, un-check the box 'Setup Icon Only' as in Figure 4. You can then change the location to which EIS will be installed.

Figure 4



4. After clicking on the '[Install](#)' button, you will be asked to wait a few moments, and will then see the dialog box shown in Figure 5 to choose which browser you want to use. Make your choice, and click the 'OK' button.

Figure 5



5. A shortcut will be placed in your 'Start' menu, a browser window will open, and the EIS application will start.

6. You can access your data in future by clicking on the short cut in your start menu, but you will need to have the CD/DVD present in the drive.



### 2.1.1.2 Install EIS on Your Local Drive

1. To install the EIS application and data onto your local drive, first copy the full contents of each disc to your chosen location. From Windows Explorer, right-click on the /eis/ directory on the CD/DVD, click on copy, and then right-click on your chosen drive or directory, and click on paste to copy the entire contents.
2. The time taken to achieve this will depend on the speed of your drives, and the amount of data stored on the discs. Repeat for each disc.

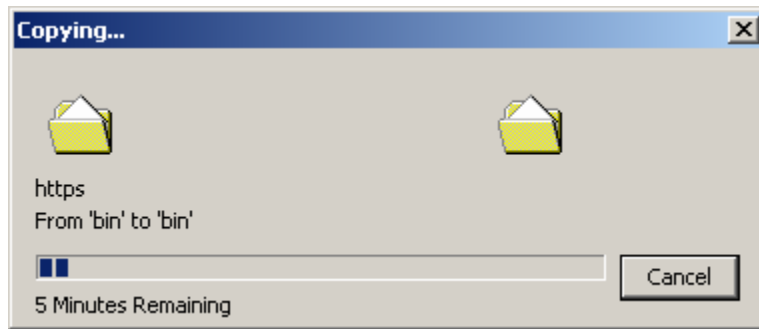


Figure 6

3. Each subsequent disc will prompt you with a 'Confirm Folder Replace' dialog box. It's important to click '**Yes to All**' at this point (Figure 7), to ensure each disc is copied correctly to the drive.

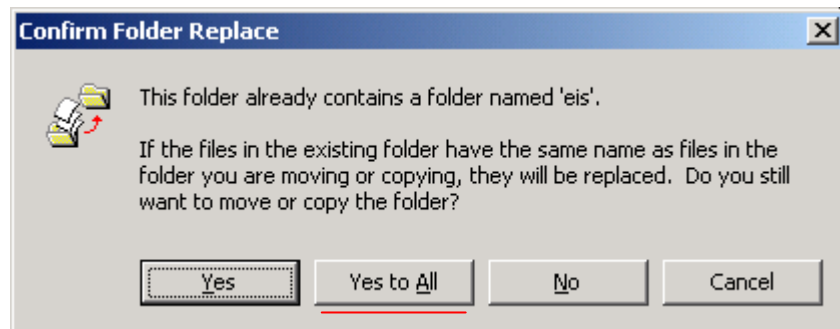
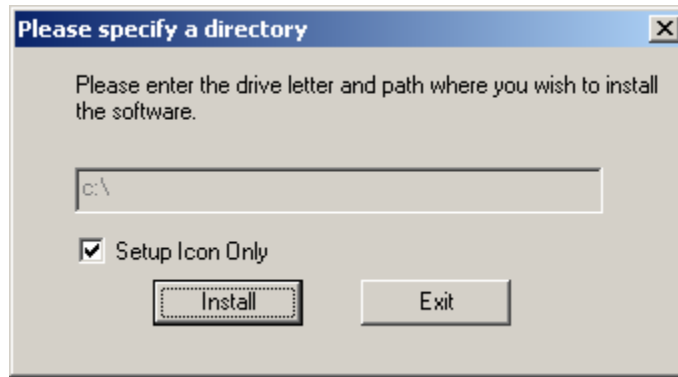


Figure 7

4. Once the contents of all of your CD/DVDs have been copied, double-click on setup.exe in the /eis/cdstage/ directory.
5. You will then be prompted to specify a directory, as shown in Figure 8. Leave this as the default, and click on 'Install'

Figure 8



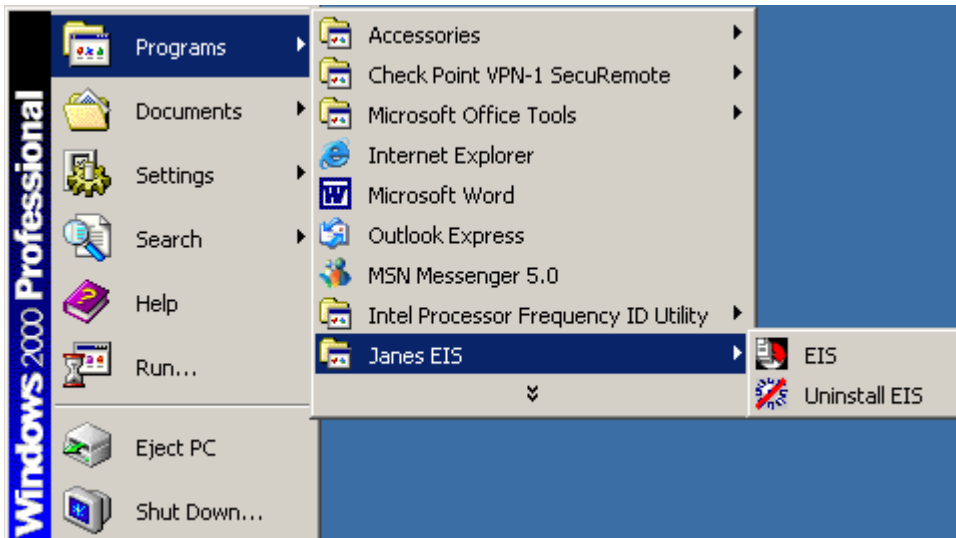
6. You will then be asked to choose a browser as in Figure 9. Make your choice, and click on the 'OK' button.

Figure 9



7. This will create a short cut for you in your start menu.

Figure 10



8. Your browser will open, and the EIS application will launch.

### 2.1.1.3 Install EIS on a Network Drive

- Please note, that EIS can be installed on and accessed across a [network](#), but that it is not an 'Intranet' solution, as it is not 'web-enabled'.
  1. To [install](#) EIS on a [network](#) drive, simply repeat the steps above in section [2.1.1.2](#), and a shortcut will be created in your start menu to launch EIS from the [network](#) drive.
  2. All [network](#) clients who wish to access EIS from the [network](#) drive, should double-click on setup.exe in the /eis/cdstage/ directory on the [network](#) drive, to create a shortcut in the client's start menu.

## 2.1.2 Unix

### 2.1.2.1 Running EIS from CD/DVD

- As is the case for Windows users, it is possible to run EIS from CD/DVD on a Unix system without copying the application and data files to a home or shared directory, but is only recommended for those who have a single, or sample disc. To [install](#) EIS to run from your home directory, see section [2.1.2.2](#).

1. The first task to be performed is the [mounting](#) of the CD/DVD. This can be achieved for the appropriate system using the commands below. Please see your system administrator for the correct mount device filenames. Generic device filenames are used in the following mount commands:

- a. Solaris v2.6: Will mount automatically when the disc is inserted.
- b. HP-UX 11.00: `mount -F cdrfs -o cdcase/dev/dsk/c0t2d0/cdrom`
- c. AIX v4.1.4: `mount -v cdrfs -r /dev/cd1/cdrom`

2. To [install](#) your EIS application to run from the CD/DVD on your chosen workstation, from the `eis/cdstage/` directory run the following command:

```
./search
```

3. When prompted, choose to [install](#) the software by entering 'y', and change the installation location from the [default](#) `/cdapp` directory if required.

4. To launch EIS, change directories to `/cdapp` and run the following command.

```
./search
```

NOTE: To run EIS directly from CD/DVD, the disc must be present at all times in the drive.

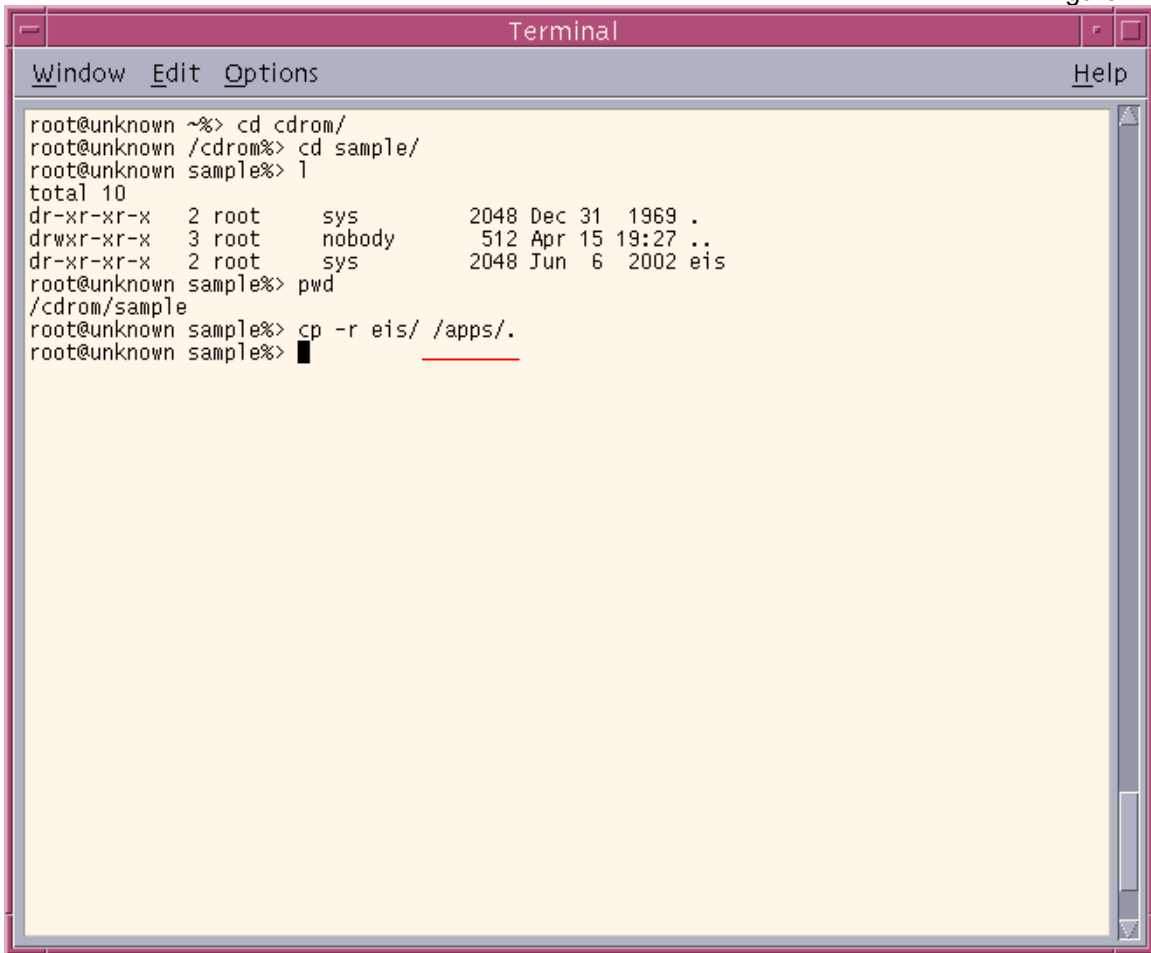
### 2.1.2.2 Install EIS in Your Home Directory

1. The first task to be performed is the [mounting](#) of the CD/DVD. This can be achieved for the appropriate system using the commands below. Please see your system administrator for the correct mount device filenames. Generic device filenames are used in the following mount commands:

- a. Solaris v2.6: Will mount automatically when the disc is inserted.
- b. HP-UX 11.00: `mount -F cdrfs -o cdcase/dev/dsk/c0t2d0/cdrom`
- c. AIX v4.1.4: `mount -v cdrfs -r /dev/cd1/cdrom`

2. Once the disc is mounted, you should copy the contents of each disc to your chosen directory in your home directory. The command to use is shown in Figure 11 below, where we chose the `apps` directory in which to copy the contents of each disc.

Figure 11



The image shows a terminal window titled "Terminal" with a menu bar containing "Window", "Edit", "Options", and "Help". The terminal content is as follows:

```
root@unknown ~%> cd cdrom/  
root@unknown /cdrom%> cd sample/  
root@unknown sample%> l  
total 10  
dr-xr-xr-x  2 root    sys      2048 Dec 31  1969 .  
drwxr-xr-x  3 root    nobody   512 Apr 15 19:27 ..  
dr-xr-xr-x  2 root    sys      2048 Jun  6  2002 eis  
root@unknown sample%> pwd  
/cdrom/sample  
root@unknown sample%> cp -r eis/ /apps/.  
root@unknown sample%> █
```

- Next, change to the `eis/cdstage/` directory, and run `search`, as shown in Figure 12.

Figure 12

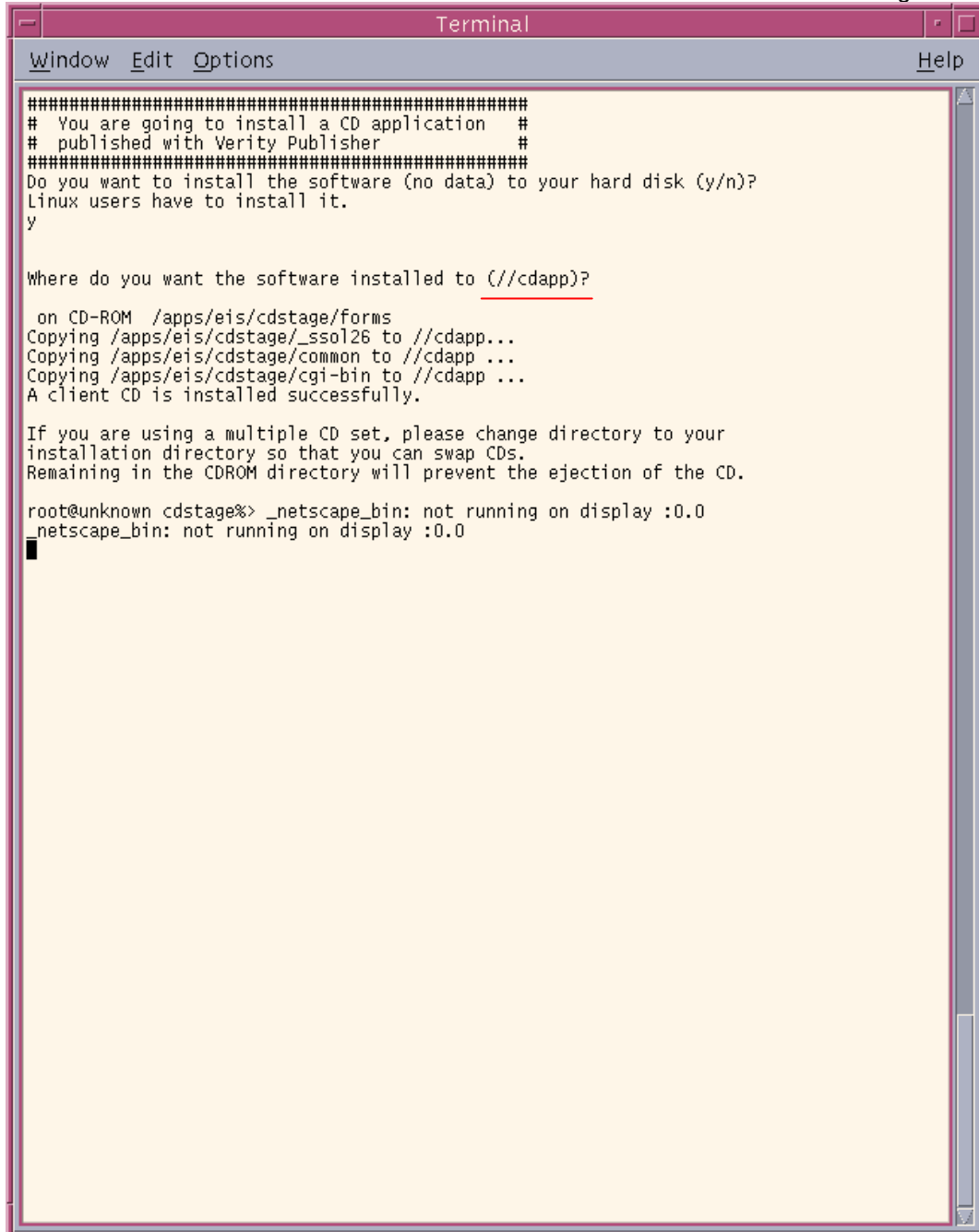
```

Terminal
Window Edit Options Help
root@unknown ~%> cd /apps/
root@unknown /apps%> cd eis/cdstage/
root@unknown cdstage%> pwd
/apps/eis/cdstage
root@unknown cdstage%> l
total 4746
dr-x----- 15 root   other    512 Apr 15 19:31 .
dr-x-----  3 root   other    512 Apr 15 19:29 ..
dr-x-----  4 root   other    512 Apr 15 19:31 _hpux11
dr-x-----  4 root   other    512 Apr 15 19:31 _ilnx21
dr-x-----  4 root   other    512 Apr 15 19:31 _nti40
dr-x-----  4 root   other    512 Apr 15 19:31 _rs6k41
dr-x-----  5 root   other    512 Apr 15 19:32 _ssol26
dr-x-----  2 root   other    512 Apr 15 19:29 cgi-bin
dr-x----- 56 root   other   1536 Apr 15 19:30 collects
dr-x-----  5 root   other    512 Apr 15 19:30 common
dr-x----- 56 root   other   1536 Apr 15 19:30 cs
dr-x-----  7 root   other    512 Apr 15 19:31 datasample
dr-x-----  3 root   other    512 Apr 15 19:31 docs
-r-x-----  1 root   other   468509 Apr 15 19:31 eis_license.pdf
-r-x-----  1 root   other   52736 Apr 15 19:31 eisinstallationandupdateinstruc
-r-x-----  1 root   other   45568 Apr 15 19:31 eisspecsnew.doc
dr-x-----  5 root   other    2560 Apr 15 19:31 forms
-r-x-----  1 root   other   995383 Apr 15 19:31 mfc42.dll
dr-x-----  3 root   other    512 Apr 15 19:31 plugins
-r-x-----  1 root   other    6687 Apr 15 19:31 search
-r-x-----  1 root   other   25658 Apr 15 19:31 search.ini
-r-x-----  1 root   other  774144 Apr 15 19:31 setup.exe
root@unknown cdstage%> ./search

```

4. Enter 'y' when prompted, and choose the location for the installation of the system files. We chose the [default](#) location as shown in Figure 13, which will be created in your home directory.

Figure 13

A terminal window titled "Terminal" with a menu bar containing "Window", "Edit", "Options", and "Help". The terminal output shows a series of messages from a CD application installer. It starts with a header, asks for confirmation to install, and then prompts for the installation directory. The user enters the default path, and the installer proceeds to copy files and complete the installation. Finally, it shows a warning about the Netscape browser not running on the current display.

```
#####
# You are going to install a CD application #
# published with Verity Publisher #
#####
Do you want to install the software (no data) to your hard disk (y/n)?
Linux users have to install it.
y

Where do you want the software installed to (//cdapp)?

 on CD-ROM /apps/eis/cdstage/forms
Copying /apps/eis/cdstage/_ssol26 to //cdapp...
Copying /apps/eis/cdstage/common to //cdapp ...
Copying /apps/eis/cdstage/cgi-bin to //cdapp ...
A client CD is installed successfully.

If you are using a multiple CD set, please change directory to your
installation directory so that you can swap CDs.
Remaining in the CDROM directory will prevent the ejection of the CD.

root@unknown cdstage%> _netscape_bin: not running on display :0.0
_netscape_bin: not running on display :0.0
█
```

5. To launch EIS, change to the cdapp directory, and run ./search



### 2.1.2.3 Install EIS on a Shared Directory

1. To *install* EIS on a shared directory, simply repeat the steps above in section [2.1.2.2](#), choosing the shared directory onto which you will copy the contents of the discs.

## 2.2 Update Install

The instructions in this section cover how to proceed when you receive a monthly update.

### 2.2.1 **Windows**

#### 2.2.1.1 Running an EIS update from CD/DVD

1. Simply insert your CD/DVD into the drive, and launch EIS as normal via the shortcut in your start menu.

#### 2.2.1.2 Installing an EIS Update on Your Local Drive

- In the '[Introduction](#)' section of this document, we stated that monthly [updates](#) no longer contain just the updated data, rather that they now contain a full set of data. From the perspective of installing data for each update, you now have two choices. [Install](#) the latest update over the top of the previous installation, or remove the previous installation, and start afresh each month.
  - We strongly recommend that you remove the previous installation as the time taken to complete either option is approximately the same, you will save disk space by removing data from previous editions that you will no longer be able to access anyway, and you will ensure you have all of the latest data and index files installed.
1. To remove the previous installation, click on the link to [uninstall](#) EIS from your start menu. Note that this removes your short cuts only. Click on the '[Uninstall](#)' button as shown in Figure 14 to continue.

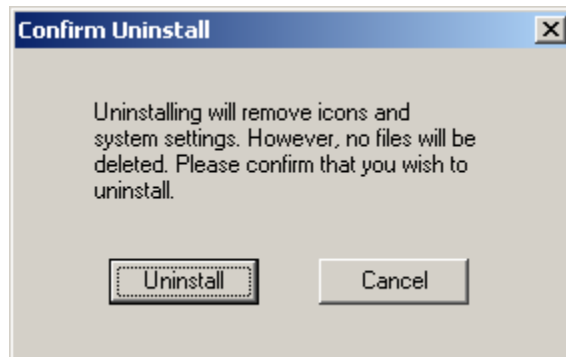


Figure 14

2. To remove the EIS application and data files, simply delete the EIS directory and subdirectories from your local drive. If you have just been using EIS, be sure you clicked on the 'Exit' link on the EIS menu bar before attempting the deletion. Launch EIS again and click on the 'Exit' link if you're unsure.
3. Windows may prompt you to confirm the deletion with the two dialog boxes shown in Figures 15 and 16. Click 'Yes' and 'Yes to All'. The time taken to complete the deletion will depend on the quantity of files, and the speed of your drive (Figure 17).

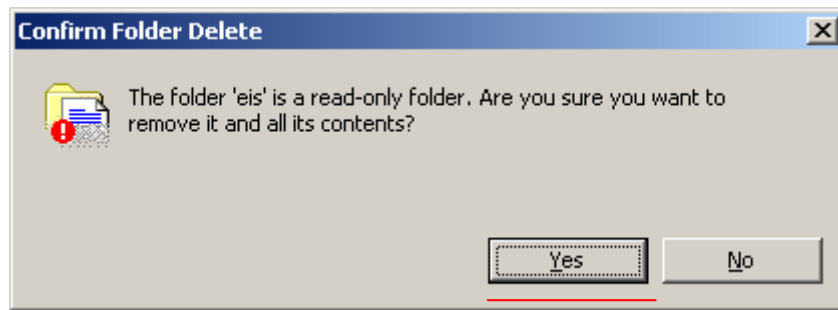


Figure 15

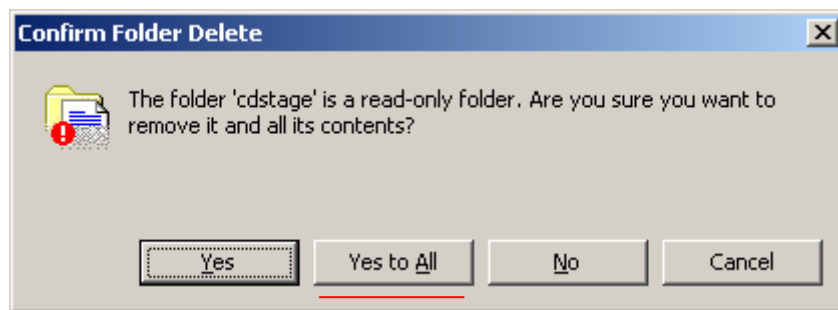


Figure 16

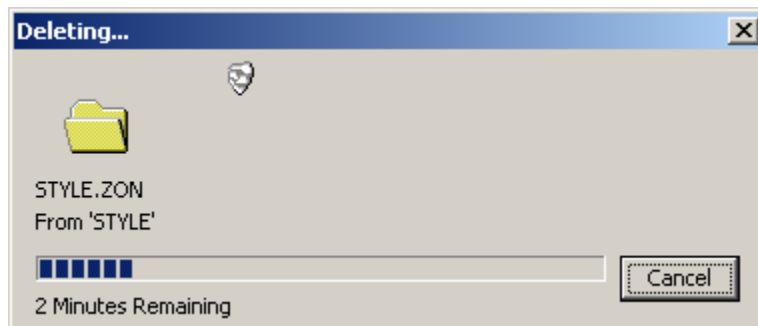


Figure 17

4. To [install](#) your latest [updates](#), simply follow the steps as listed in section [2.1.1.2](#) above.

### 2.2.1.3 Install an EIS Update on a Network Drive

1. To [\*install\*](#) an EIS update on a [\*network\*](#) drive, simply repeat the steps above in section [2.2.1.2](#), to remove the previous installation, and [2.1.1.3](#) to [\*install\*](#) EIS and create the required shortcuts to launch the application.

## 2.2.2 Unix

### 2.2.2.1 Running an EIS Update from CD/DVD

1. You must remove the previous EIS from your system, please follow step 1 in section [2.3.2.1](#).
2. To run an update directly from CD/DVD, simply repeat the steps above in section [2.1.2.1](#).

### 2.2.2.2 Installing an EIS Update in Your Home Directory

- In the '[Introduction](#)' section of this document, we stated that monthly [updates](#) no longer contain just the updated data, rather that they now contain a full set of data. From the perspective of installing data for each update, you now have two choices. [Install](#) the latest update over the top of the previous installation, or remove the previous installation, and start afresh each month.
  - We strongly recommend that you remove the previous installation as the time taken to complete either option is approximately the same, you will save disk space by removing data from previous editions that you will no longer be able to access anyway, and you will ensure you have all of the latest data and index files installed.
1. To remove EIS from your system, you will need to delete the eis, the .cdp45c\_[your\_platform] (In our case 'your\_platform' is \_ssol26, thus it is .cdp45c\_ssol26,) and the cdapp directories and everything below those in your home directory. The commands are as follows.

```
\rm -rf cdapp/
```

```
\rm -rf eis/
```

```
\rm -rf .cdp45c_[your_platform]/
```

2. To [install](#) your [updates](#), simply repeat the steps in section [2.1.2.2](#).

### 2.2.2.3 Install an EIS Update on a Shared Directory

1. To [install](#) an EIS update on the shared directory, simply repeat the steps above in section [2.2.2.2](#) to remove EIS, and the steps in section [2.1.2.2](#) to re-install.

## 2.3 **Uninstall**

This section covers how to [uninstall](#) the EIS application and data files.

### 2.3.1 **Windows**

#### 2.3.1.1 Uninstall EIS when Running from CD/DVD

1. To [uninstall](#) EIS when you run it from the CD/DVD, simply follow step 1 of section [2.2.1.2](#), and click on the link to [uninstall](#) EIS from your start menu. Click on the '[Uninstall](#)' button to complete.

#### 2.3.1.2 Uninstalling EIS from your local drive

1. To [uninstall](#) the EIS application and data from your local drive, simply follow steps 1-3 of section [2.2.1.2](#).

#### 2.3.1.3 Uninstall EIS from a network drive

1. To [uninstall](#) the EIS application and data from a [network](#) drive, simply follow steps 1-3 of section [2.2.1.2](#)
2. Each client that accesses EIS on a [network](#) drive will have to click on the link in their start menu to [uninstall](#) EIS, which will remove their short cuts.

## **2.3.2 Unix**

### **2.3.2.1 Uninstall EIS When Running EIS from CD/DVD**

1. To [uninstall](#) EIS from your system, delete the cdapp, and .cdp45c\_[your\_platform] directories and everything below those, using the following commands.

```
\rm -rf cdapp/  
\rm -rf .cdp45c_[your_platform]/
```

### **2.3.2.2 Uninstalling EIS from Your Home Directory**

1. To remove EIS from your home directory, repeat step 1 in section [2.2.2.2](#).

### **2.3.2.3 Uninstall EIS from a Shared Directory**

1. To remove EIS from a share directory, again repeat step 1 in section [2.2.2.2](#).

## 3.0 Support

This section contains contact details, supported platforms, [Frequently Asked Questions](#) (FAQs), and a [glossary](#) of terms used in this guide.

### 3.1 Contact Details

#### **Jane's Europe and Africa**

Jane's Information Group  
Sentinel House  
163 Brighton Road  
Coulsdon, Surrey CR5 2YH  
United Kingdom  
Tel: +44 (0) 20 8700 3700  
Fax: +44 (0) 20 8763 1006  
e-mail: [info@janes.co.uk](mailto:info@janes.co.uk)  
Technical Support:  
[techsupport.uk@janes.com](mailto:techsupport.uk@janes.com)

#### **Jane's North, Central and South America**

Jane's Information Group  
110 N. Royal Street  
Suite 200  
Alexandria, VA 22314  
United States  
Tel: (+1 703) 683 3700  
(+1 800) 824 0768  
Fax: (+1 703) 836 0297  
(+1 800) 836 0297  
e-mail: [info@janes.com](mailto:info@janes.com)  
Technical Support:  
[techsupport.us@janes.com](mailto:techsupport.us@janes.com)

#### **Jane's Canada**

Jane's Information Group  
PO Box 20126  
390 Rideau St.  
Ottawa, Ontario  
Canada  
K1N 5W0  
Tel: (+1 613) 851 4527  
e-mail: [geoff.mizen@janes.com](mailto:geoff.mizen@janes.com)  
Technical Support:  
[techsupport.us@janes.com](mailto:techsupport.us@janes.com)

#### **Jane's Middle East**

Jane's Information Group  
PO Box 502138  
Dubai  
United Arab Emirates  
Tel: (+971 4) 390 2335  
(+971 4) 390 2336  
Fax: (+971 4) 390 8848  
e-mail: [mideast@janes.com](mailto:mideast@janes.com)  
Technical Support:  
[techsupport.uk@janes.com](mailto:techsupport.uk@janes.com)

#### **Jane's US West Coast**

Jane's Information Group  
201 East Sandpointe Avenue  
Suite 370  
Santa Ana, CA 92707  
United States  
Tel: (+1 714) 850 0585  
Fax: (+1 714) 850 0606  
e-mail: [janeswest@janes.com](mailto:janeswest@janes.com)  
Technical Support:  
[techsupport.us@janes.com](mailto:techsupport.us@janes.com)

#### **Jane's Asia**

Jane's Information Group  
78 Shenton Way  
#10-02  
Singapore 079120  
Tel: (+65) 6325 0866  
Fax: (+65) 6226 1185  
e-mail: [info@janes.com.sg](mailto:info@janes.com.sg)  
Technical Support:  
[techsupport.uk@janes.com](mailto:techsupport.uk@janes.com)



**Jane's India**

Jane's Information Group  
Post Box No. 3806  
New Delhi 110049  
India  
Tel: (+91 11) 2651 6105  
Fax: (+91 11) 2651 6105  
e-mail: [janesindia@sify.com](mailto:janesindia@sify.com)  
Technical Support:  
[techsupport.uk@janes.com](mailto:techsupport.uk@janes.com)

**Jane's Japan**

Jane's Information Group  
Palaceside Building, 5F  
1-1-1, Hitotsubashi  
Chiyoda-ku, Tokyo 100-0003  
Japan  
Tel: (+81 3) 5218 7682  
Fax: (+81 3) 5222 1280  
e-mail: [norihisa.fukuyama@janes.jp](mailto:norihisa.fukuyama@janes.jp)  
Technical Support:  
[techsupport.uk@janes.com](mailto:techsupport.uk@janes.com)

**Jane's Australia and New Zealand**

Jane's Information Group  
PO Box 3502  
Rozelle Delivery Centre  
New South Wales 2039  
Australia  
Tel: (+61 2) 8587 7900  
Fax: (+61 2) 8587 7901  
e-mail: [janesinfo@janes.thomson.com.au](mailto:janesinfo@janes.thomson.com.au)  
Technical Support:  
[techsupport.uk@janes.com](mailto:techsupport.uk@janes.com)

### **3.2 Supported Platforms**

- Windows NT 4.0
- Windows 98, Windows 2000, Windows XP
- Solaris V2.6
- HP/UX V11.00
- AIX V4.1.4

### **3.3 Frequently Asked Questions**

Q. Do I need to be connected to the Internet to use EIS?

A. No, but you will need a web browser. Netscape 4.6 and later, or Internet Explorer 5.x and later.

Q. My EIS delivery is fulfilled on more than one disc, which do I [install](#) first?

A. It doesn't matter which disc you [install](#) first, provided that each is copied to the same location.

Q. I chose to [install](#) my update over the top of the previous installation. Is this ok?

A. Yes. Although you should be aware that once a new edition of a title such as Jane's

Fighting Ships is released; you can only access the latest edition. The previous edition will still be present on your drive, but the search and browse will only give access to the latest edition. With this in mind we recommend you remove the previous installation to save space.

### 3.4 Glossary

<b>Term</b>	<b>Definition</b>
All of These	- In EIS this refers to all of the listed datasets.
Angle Brackets	- Used to surround operators to differentiate them from keywords, angle brackets are not required for the <AND> <OR> and <NOT> operators, but are required for all others. It is therefore good practice to always use <angle brackets>.
Case Insensitive	- Search terms are NOT case sensitive in EIS, and can therefore be entered in UPPER, Mixed or lower case.
Control Key	- Also known as the Ctrl key, this is pressed in combination with the mouse button to select multiple datasets.
Datasets	- A dataset is an organized group of related information. In this case, a dataset is a publication.
Date Ascending	- Documents sorted with the oldest first.
Date Descending	- Documents sorted with the newest first.
Default	- A pre-selected option, setting, or behaviour.
Drill-Down	- The process of navigating through a series of categories until reaching a document.
Fielded Search	- Search terms entered into a specific search field such as Date, Country, Company, Section, and Article Title.
Install	- The process of placing your application on your system for use.
Keywords	- Your search terms.
Mounting	- Mounting a directory or disc on a Unix system, attaches the item to the branches of the tree-like structure that Unix uses to organize directories.
Network	- In this context, a network install is where EIS is installed on a network drive.
Operator	- An operator is used to return documents that match the operator's relationship between search terms.
Phrase Searching	- A phrase is when a match is made with two or more keywords together, with no other keywords in between. For example, 'The quick brown fox' is a phrase, but 'quick fox' is not.
Post Date	- The date on which the document was made available

to Jane's electronic services.

- Score - A score between 0.0 and 1.0 is given to all search and browse results. Scores are calculated based on whether the search term appears in the document title (scores higher if it does), how many times the term appears in the document, and as a ratio between search term frequency and document density.
- Standalone - An application installed on, for example, your desktop PC's drive, is said to be a standalone installation.
- Uninstall - The process used to remove EIS from your system.
- Updates - An update is the set of data you receive each month.
- Wildcard - The asterisk character can be used in place of an individual character, or where the user knows the beginning of a term but not the end, or vice versa.