

Rathdowney Tour Map

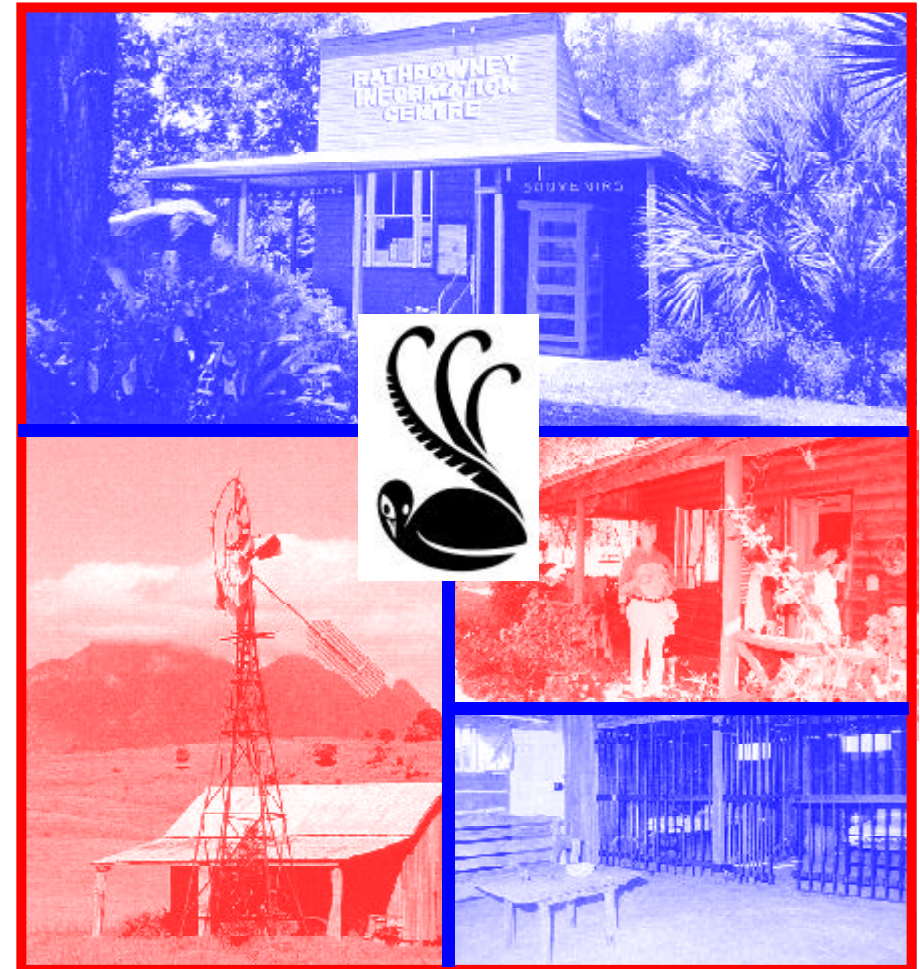


Designed and Developed by
Shire Promotions Section.

J:\PM6\299\Rathtour.P65
March 2000

A TOUR OF RATHDOWNEY

and Surrounds....



Whilst visiting Beaudesert Shire you may care to take in some of the many attractions the Shire has to offer. Outlined in this booklet are places within the area of Rathdowney which have been mentioned as part of a tourist journey. Further information on what Beaudesert Shire has to offer can be obtained by contacting Council's Shire Promotions Section on (07) 5540 5199.

R
A
T
H
D
O
W
N
E
Y

and surrounds

1. Innisplain, Lions Road

The Lions Tourist Road was built by the Kyogle and Beaudesert Lions Clubs with massive community support.

The road provides a 31km shorter and very scenic alternative route for the light traffic to Kyogle. It is a beautiful drive with some short distances of unsealed roads.

2. Innisplain Tramway Station Monument

The Beaudesert Tramway was extended to Innisplain in 1903 and closed in 1944.

3. Innisplain School Monument

The school opened in 1921 and closed in 1962. The School was re-located to Rathdowney Memorial Grounds and is now used by the Axemen and Sawyers Club and the Pony Club as their Clubhouse. The land where the School stood is now part of Glenlogan Park horse stud.

The Tramway and School Monuments were erected by the Rathdowney Area Development and Historical Association Inc in conjunction with the Beaudesert Shire Council.



Innisplain Tramway closed in 1944.

R
A
T
H
D
O
W
N
E
Y

and surrounds

17. Lutheran Church Monument

The church was built in 1910 and closed in 1966. The area is now called Abode Park, named after Pastor Arman Bode as the area is used as a church recreation area.

18. Rathdowney Hotel/Motel

Built in 1911 by the Stretton family, the hotel is now owned by the Ogilvy family and is leased by Geoff and Heather Murphy.



Abseiling and Bushwalking are two of the many activities to be enjoyed at Mount Barney National Park.

R
A
T
H
D
O
W
N
E
Y

and surrounds

13. Yellowpinch Reserve

Located on the Logan River, camping is no longer permitted. Day usage is still available.

14. Mount Barney Lodge

Mount Barney Lodge is owned by John and Jenny Larkin. the original homestead was built in the early 1900's. They also have The Foresters Hut which as been fully renovated.



Cottage at Barney Creek Tree Farm.

15. Mount Barney School Memorial

The school was opened 1901 and closed in 1962. Originally the area was known as Thulimbah. Because of the confusion with Thulimbah near Stanthorpe the area became known as Mount Barney in 1916.

16. Barney View Uniting Church and Cemetery

The church was opened in 1908 as Thulimbah Methodist Church. Services are still held once a month. (For more information see booklet on Churches).

R
A
T
H
D
O
W
N
E
Y

and surrounds

4. Interstate Railway

The Sydney to Brisbane line was opened in 1929.

5. Dulbolla Tramway Station Monument

1911-1944

6. Captain Logan's Lookout

The monument was erected to commemorate the 150th anniversary of the climbing of Mount Barney by Captain Patrick Logan in August, 1828. The monument was erected by Beaudesert Shire Council and was opened and unveiled by William Jolly in July 1978.



This plaque was erected to commemorate the 150th anniversary of the climbing of Mount Barney by Captain Patrick Logan in 1828.

R
A
T
H
D
O
W
N
E
Y

and surrounds

7. Rathdowney Information Centre and Historical Museum

The Information Centre was established in 1978 by the Beaudesert Shire Council. The original building (1911) was situated in Collins Street and was occupied by the Commercial Bank of Australia as a branch of the Beaudesert Bank.



The Historical Room was added in 1984 to house the local history collection.

Rathdowney was named after the Prior family estates in Ireland. About 1880 the Rathdowney Station passed to William Collins & Sons and the land was broken up for the township in 1906. In 1911 the Beaudesert Tramway was extended from Innisplain and development followed eg Post Office, Bank, Hotel, Shops, Blacksmith, School of Arts etc.

St Joseph's Catholic Church and St David's Anglican Church were both opened in 1929.

Timber and dairying were the main industries of the Upper Logan area.

Max and Moira Tilley own and reside at Rathdowney House.

Rathdowney State School was opened in 1915.

R
A
T
H
D
O
W
N
E
Y

and surrounds

8. Forest Home

Forest Home is 10km along the Boonah/Maroon/Rathdowney Road from Rathdowney and is owned by Mike and Val O'Callaghan and is now a Bed and Breakfast accommodation. The homestead was built by selector, Andrew Flanagan in 1913. The Logan River and Burnett Creek borders the property.

9. Bigriggan Camping Ground

(Managers, Morrie and Johanna Holland). Bigriggan is set in 100 acres of bushland and bordered by the Logan River and Burnett Creek.

10. Bigriggan School Monument

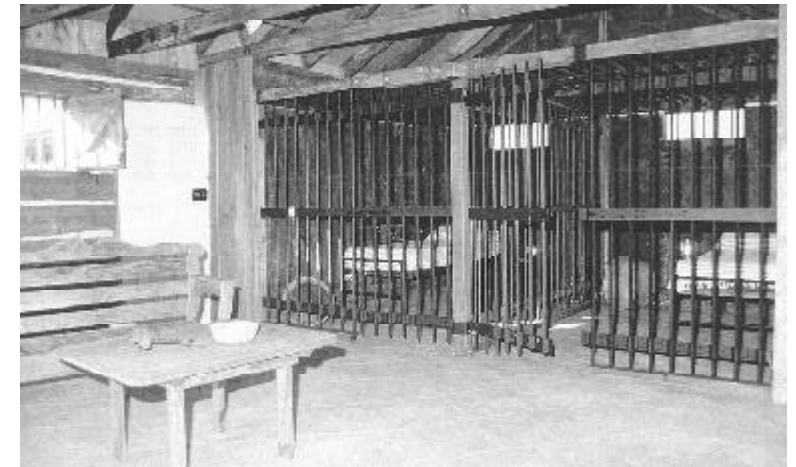
1892-1912

11. Flanagan Reserve

The Camping ground is on the Logan River and is controlled by the Beaudesert Shire Council.

12. Barney Creek Cottage and Tree Farm

The Proprietors are Barry Marshall and Jennifer Seale A.A.I.L.A. Bed and Breakfast and suppliers of native and exotic trees and shrubs.



Reconstructed Jail at Forest Home