

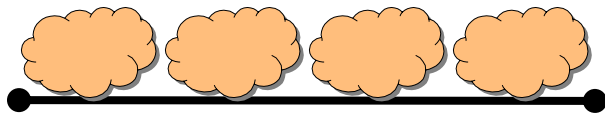
<p>SCIENCE</p> <p>Kindergarten</p> <p>Essential Vocabulary Sort</p>	<p>Sort by</p> <p>COLOR</p>
<p>Sort by</p> <p>SHAPE</p>	<p>Sort by</p> <p>Weight</p>
<p>Cat on</p> <p>TOP</p> <p>of the box</p>	<p>Cat at the</p> <p>BOTTOM</p> <p>of the box</p>
<p>FRONT</p>	<p>BACK</p>
<p>LARGEST</p> <p>to</p> <p>SMALLEST</p>	<p>SMALLEST</p> <p>to</p> <p>LARGEST</p>

Sort by
TEXTURE

Identify the next shape in
the pattern:



About how many  is
the line?



Which of the five senses is
associated with the:

EYES

Which of the five senses is
associated with the:

EARS

Which of the five senses is
associated with the:

NOSE

Which of the five senses is
associated with the:

TONGUE

Which of the five senses is
associated with the:

SKIN

Which of the five senses
allows us to experience:

**SWEET, SOUR,
BITTER, SALTY**

Which of the five senses
allows us to experience:

**SMOOTH, HARD,
SOFT, COLD, WARM.
HOT**

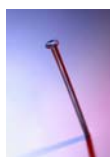
Which of the five senses allows us to experience:

LOUD, SOFT, HIGH, LOW

Which of the five senses allows us to experience:

BRIGHT, DULL, COLOR, BLACK, WHITE

Which item will be attracted to a magnet?



(IRON NAIL)

Which item will be attracted to a magnet?



(IRON PAPER CLIP)

Which item will be attracted to a magnet?



(CEREAL)

Which item will be attracted to a magnet?



(BOOK)

Which words **BEST** explain:

ATTRACTION

Which words **BEST** explain:

NONATTRACTION

Which words **BEST** explain:

PUSH

Which words **BEST** explain:

PULL

Which words **BEST**
explain:

ATTRACT

Which words **BEST**
explain:

REPEL

Which words **BEST**
explain:

METAL

Which words **BEST**
explain:

NONMETAL

Which item contains a magnet:

CANOPENER



BIRD



Which is the picture of a:

CIRCLE

Which is the picture of a:

RECTANGLE

Which is the picture of a:

SQUARE

Which is the picture of a:

TRIANGLE

A Rubber band



is

FLEXIBLE or STIFF?

A Rubber band
is



STRAIGHT or **CURVED**?

Your DESK is



SMOOTH or **ROUGH**?

Which picture shows
a **LONG** dog followed
by a **SHORT** dog?

Which picture shows
a **LITTLE** dog
followed by a **BIG**
dog?

Which picture shows
a **HEAVY** cat followed
by a **THIN** cat?

Which picture shows
a **SMALL** cat followed
by a **LARGE** cat?

Which picture shows
a triangle **OVER** a
rectangle?

Which picture shows
a triangle **IN** a
rectangle?

Which picture shows
a circle **ABOVE** a
triangle?

Which picture shows
a circle **BELOW** a
triangle?

Which picture shows a circle to the **LEFT** of a triangle?

Which picture shows a circle to the **RIGHT** of a triangle?

Which picture shows person running **FAST**?

Which picture shows a person walking **SLOW**?

Which picture shows water as a **SOLID**?

Which picture shows water as a **LIQUID**?

Which picture shows water as a **GAS**?

If Jack spills water  will the water go **UP** or **DOWN** the hill?

Which do we need to live?
FOOD or **TELEVISION**

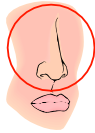


Which do we need to live?
WATER or **CANDY**



Which do we need to live?

AIR or **CARTOONS**



The Nose



The umbrella is creating a



SHADOW or a **LIGHT**
on the ground?

Which picture shows a

SUNNY

day?

Which picture shows a

CLOUDY

day?

Which picture shows a

RAINY

day?

Which picture shows a

SNOWY

day?

Which picture shows a

WINDY

day?

We put on a sweater when
the weather gets

_____?



The flowers begin to grow
when the weather gets

_____?



The snow starts to fall only
when the weather is

_____?



We go swimming to cool off when the weather is _____?



We hold on to our hats when the weather is _____?



Which picture shows the correct arrangement of meals we eat in a day?

Dinner Breakfast Lunch

Which picture shows Pedro at birth and then age six?

Washing the dishes and using them again tomorrow is an example of _____?



Drawing on paper and giving it your teacher to be turned into new paper again is an example of ____?



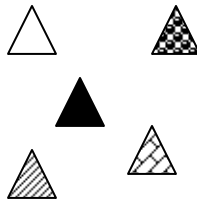
Group A

red fire truck
red ball
red hair
red car

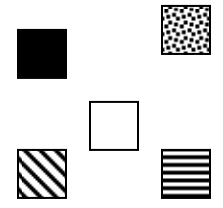
Group B

blue sky
blue chalk
blue sneakers
blue crayon

Group A



Group B

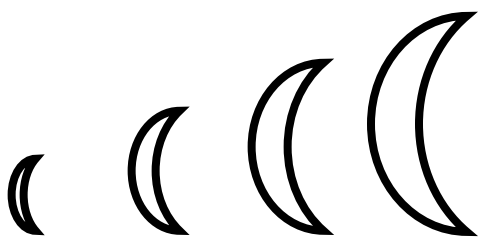
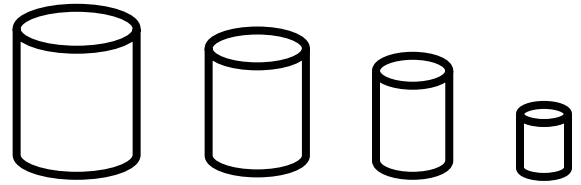
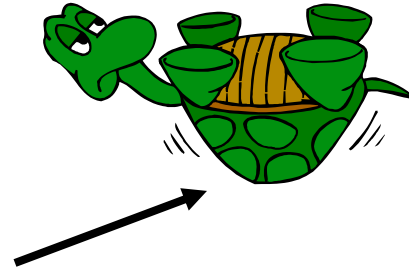
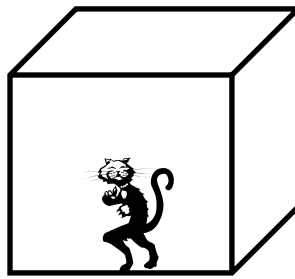


Group A

truck
house
elephant
whale

Group B

feather
pencil
baby bird
goldfish



Group A

blanket
tissue
face
pillow

Group B

road
sand
rocks
tire



4

SIGHT
(SEE THE DOG)



HEARING
(LISTEN TO THE CAT
MEOW)



SMELL
(SMELL THE FLOWER)



TASTE
(TASTE THE CANDY)



TOUCH
(FEEL THE SOFT FUR
OF THE PUPPY)



TASTE
(TASTE THE CANDY)



TOUCH
(FEEL THE SOFT FUR
OF THE PUPPY)



HEARING
(LISTEN TO THE CAT
MEOW)



SIGHT
(SEE THE DOG)



Will be attracted to a
MAGNET



Will be attracted to a
MAGNET



Will **NOT** be attracted
to a **MAGNET**



Will **NOT** be attracted
to a **MAGNET**



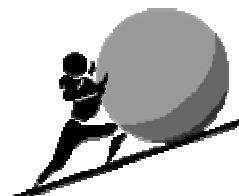
Move closer to



Do **NOT** move closer
to



Drag, haul, shove



Tow, lug, tug, yank



Pull towards you



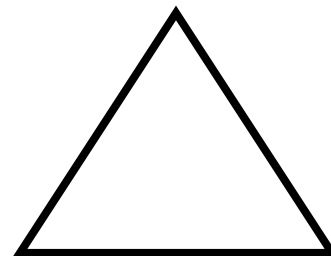
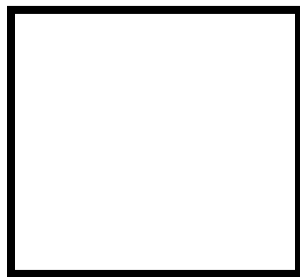
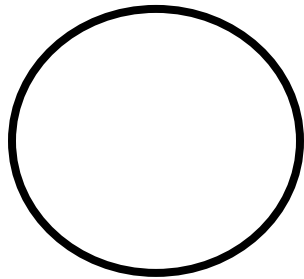
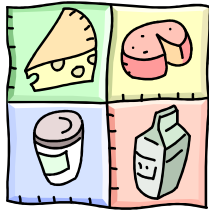
Drive away, chase off



Attracted to a magnet



NOT attracted to a magnet



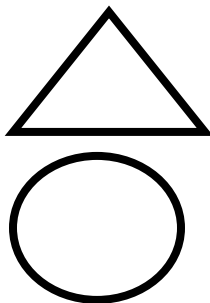
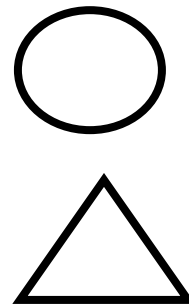
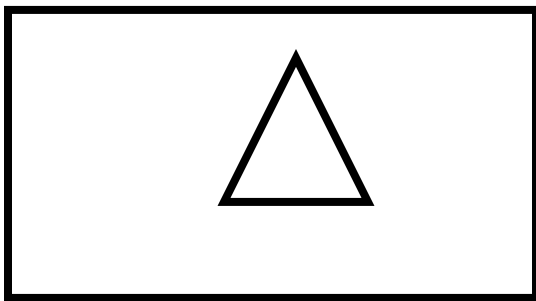
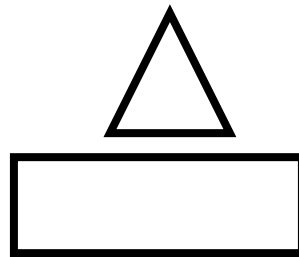
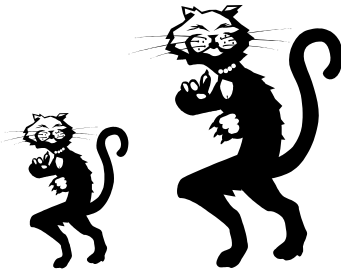
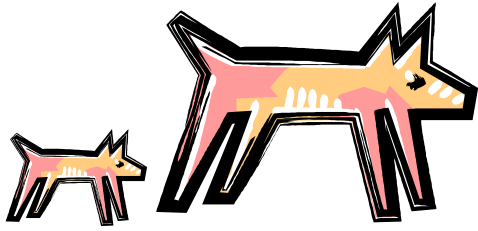
FLEXIBLE

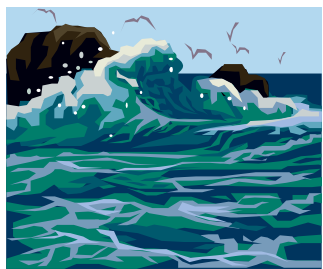
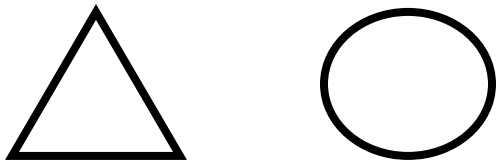


CURVED



SMOOTH





DOWN



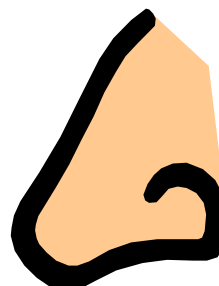
FOOD



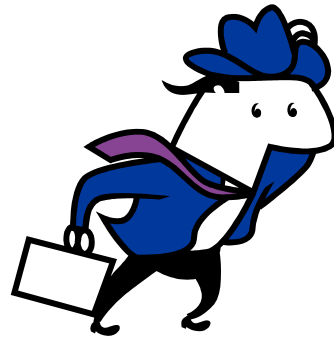
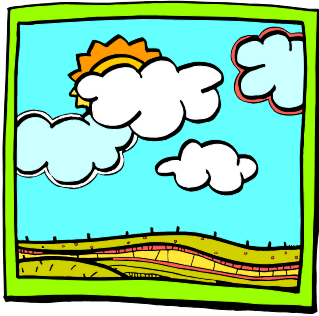
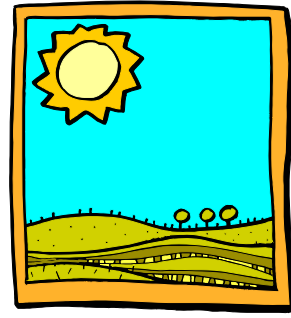
WATER



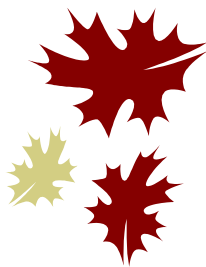
AIR



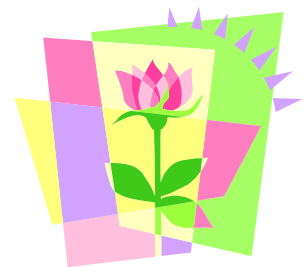
SHADOW



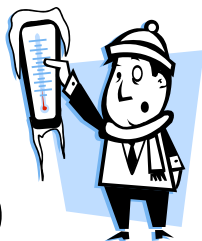
COOL



WARM



COLD



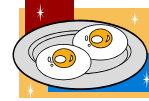
HOT



WINDY



Breakfast



Lunch



Dinner



REUSE

RECYCLE