



Discernment

DISCERNMENT GATHERINGS:

(All on Sunday afternoons, 4–6 PM)

- September 17, 2006
- October 15, 2006
- November 19, 2006
- January 21, 2007
- February 18, 2007
- March 18, 2007
- April 15, 2007

LOCATIONS:

September, January & February –

Sisters of St. Francis of Assisi
3221 S. Lake Drive
St. Francis, WI 53235

October, November, March & April –

School Sisters of Notre Dame
13105 Watertown Plank Road
Elm Grove, WI 53122

TOPICS INCLUDE:

- What is the discernment process?
- Our baptismal call to holiness and the call to religious life
- What will be different for me if I join religious life?
- Bringing balance to your life
- Moving from “job” to “ministry” – the experience of apostolic/evangelical religious life
- Contemplative, cloistered, and monastic life
- Charisms – contributions of the Church

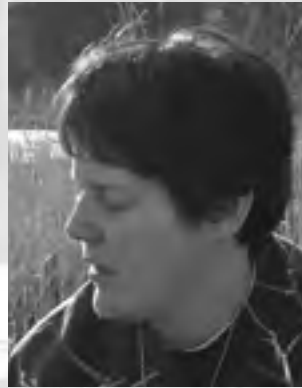
EXPLORE
the possibilities...

**WOMEN'S DISCERNMENT
GROUP**



*Sponsored by the
Vocation Ministers of the
Milwaukee Archdiocese
VMMA*

IS GOD CALLING YOU *to Religious Life?*



Do you often feel a nudge that you should consider religious life?

Has the idea of being a sister reoccurred to you over a period of time?

Do you feel a call to do more, to be involved more, to give more?

Do you enjoy being involved in ministry – as a lector, Eucharistic minister, member of a parish organization, teacher of religious education, minister of care?

Is being involved in a life-giving faith community important to you?

Do you have a desire to spend time in prayer?

Do you have a healthy self-esteem?

Are you self-motivated?

Can you laugh at yourself and your mistakes?

Do you have a desire to help others know of God's love for them?

EXPLORE

*A Discernment Group for
Women 18-35*

If you respond “yes” to many of the questions here, perhaps this is a sign that God is calling you to religious life.

Women who are interested in ongoing sharing and support spend time together in:

Prayer

Input

Dialogue

Consider joining others in a **DISCERNMENT GROUP** as you explore your life and the future to which God may be leading you.

Explore the possibilities; consider joining us for discernment.

Contact:

Sister Barbara Linke

blinke@ssnd-milw.org

262.787.1016

13105 Watertown Plank Road

Elm Grove, WI 53122-2291