



# Space Manager with LiveReorg®

## Optimize Capacity and Performance in Oracle Databases

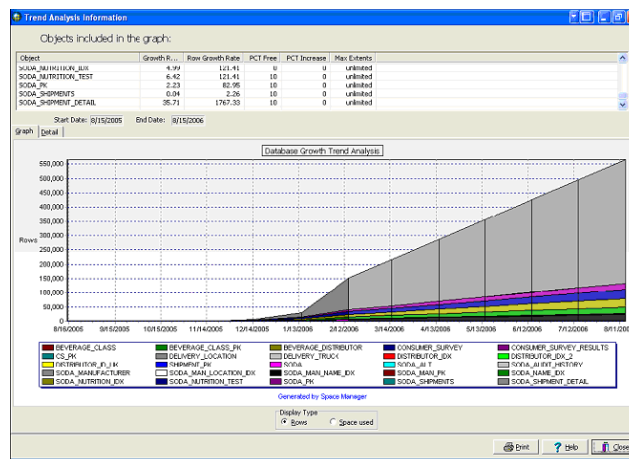
Today's databases are growing faster than ever. Over time, however, changes to your database can result in fragmentation, missing indexes and other space-related issues. As a result, database administrators (DBAs) must spend countless hours trying to manually identify and resolve space problems. Without constant attention, response times will continue to increase as storage space diminishes, resulting in availability issues and downtime.

Space Manager with LiveReorg® gives DBAs a proven tool to combat and prevent capacity problems, while maintaining database performance. It provides a proactive capacity planning solution for space management and the reorganization of your Oracle databases. Space Manager offers preventive maintenance, problem detection and resolution, as well as capacity planning across any number of databases. In addition, it combats space issues, such as fragmentation or missing indexes, with a suite of reports that allow you to detect problems before they degrade performance.

Once a space problem has been diagnosed, reorganization of one or more database objects may be the solution. Space Manager provides all types of reorganizations, including: tablespaces, tables, indexes and chained rows. Space Manager reorganizations may be targeted and scheduled to maximize application performance with minimal impact on availability. By automating the space management process, Space Manager increases DBA productivity, while improving performance and availability.

### Space Manager with LiveReorg is designed to:

- Scale reliably with your database
- Provide preventive maintenance of Oracle database space issues
- Ensure problem detection and resolution when space is a concern
- Save you time and resources when capacity planning across any number of Oracle databases



*Space Manager with LiveReorg provides proactive capacity planning with reports that help you predict out-of-space conditions and future space needs.*

*"Space Manager was by far the easiest [database reorganization product] to install and had the most intuitive interface to use. It possessed all of the requirements that we needed."*

— Dave Reinking  
Database Administrator  
Anoka County, Minnesota

- Ensures zero downtime during reorganizations
- Supports the cost-based or rules-based database optimizer
- Enables flexible background scheduling

## System Requirements:

### Client Requirements

#### • Oracle client:

Oracle SQL\*Net version 2.1 minimum, 32-bit  
Oracle Net version 8.0.6, 8.1.7, 9.2 or 10g  
(Classic Client)

Oracle 10g Instant Client

(Oracle client and database versions must be compatible)

#### • Operating system:

Windows 2000, Windows XP or  
CitriMetaframe XP

#### • CPU:

Pentium II or compatible processor (Pentium III recommended)

#### • RAM:

512 MB minimum (1 GB recommended, especially for reorganizations of a large number of objects)

#### • Disk Space:

41 MB for Space Manager; 114 MB for  
Quest Server Agent files

#### • Display settings:

1024 by 768 resolution; true color or high color; small font

### Server Requirements

• **Oracle database:** Oracle 8.0.6, 8.1.7, 9.2, 10.1 or 10.2

• **Oracle RAC / OPS:** Active-active and active-passive configurations can be used on all supported operating systems.

• **Operating system:** (32- and 64-bit supported for UNIX systems)

HP-UX 11 or 11i, HP-UX on Itanium or  
HP-UX PA-RISC

HP Tru64 UNIX 4.0, 5.0 or 5.1

Sun Solaris 2.6, 2.7, 2.8 or 2.9

IBM AIX 5L Version 5.1, 5.2 or 5.3

Red Hat Linux Advanced Server 2.1 or 3.0  
(32-bit only)

SuSe Linux Enterprise Server 8 (32-bit only)

Windows NT Server, Windows 2000 Server  
or Windows Server 2003 (32-bit only)

• **Disk Space:** 20 MB to 80 MB for statistics tables, plus 20 MB for script tables; 40 MB in the file system for Quest Server Agent executables and execution logs



[www.quest.com](http://www.quest.com)

e-mail: [info@quest.com](mailto:info@quest.com)

Please refer to our Web site for international office information.

## Zero Downtime

Space Manager allows you to reorganize objects with true zero application downtime. Tables that are being reorganized remain available, so users can continue DML transactions against the original table—including the table switch—throughout a live reorganization.

## Tablespace Reorganization

Space Manager rapidly reorganizes complete tablespaces and individual objects to reclaim space, or when your business requires a database structure change. Tablespace reorganizations optimize database layout for efficient use of disk space, enable better I/O balancing for improved query performance, plus allow you to adapt to changes required by your business.

## Graphical Tablespace Map

The graphical tablespace map provides a detailed view of space usage inside individual tablespaces. The tablespace map acts as a convenient launching pad for creating reorganization scripts, collecting statistics and performing capacity planning.

## Automated Statistics Collection

Space Manager provides flexible background scheduling of the ANALYZE and DBMS\_STATS functions for collecting statistics. Statistics are used for detecting space problems and for capacity planning to ensure that sufficient space is available at all times and that your database is performing at an optimal level.

## Capacity and Trending

The capacity and trending reports forecast the growth of individual objects or groups of objects. The data used for forecasting can be exported to popular spreadsheets and statistical packages for further modeling.

## Chained Rows Detection

Space Manager detects tables with a high degree of chaining. It can then selectively fix the chained rows without reorganizing the entire table.

## About Quest Software, Inc.

Quest Software, Inc. delivers innovative products that help organizations get more performance and productivity from their applications, databases and Windows infrastructure. Through a deep expertise in IT operations and a continued focus on what works best, Quest helps more than 18,000 customers worldwide meet higher expectations for enterprise IT. Quest Software can be found in offices around the globe and at

[www.quest.com](http://www.quest.com).