



- Provides continuous middleware data collection
- Allows you to observe actual database and operating system activity in real time
- Combines data from incompatible sources (such as Windows performance counters, SQL system tables, SQL system commands, O/S commands, registry data, SQL profiler traces) to make conclusions that are not possible using built-in tools
- Frees you from writing your own diagnostic SQL scripts
- Connects to multiple SQL Servers simultaneously
- Guides you through repair steps with the online tuner

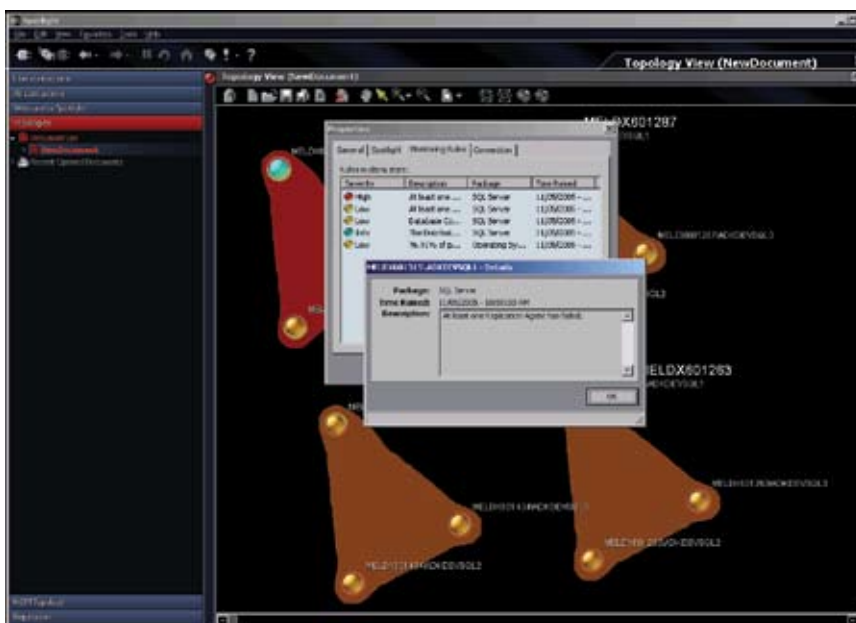
Spotlight[®] ENTERPRISE EDITION on SQL Server

Comprehensive Database Discovery, Diagnosis and Resolution

Microsoft SQL Server is gaining widespread acceptance as the database of choice for business-critical applications. With the surge in adoption of SQL Server, DBAs are under increasing pressure to ensure the availability and performance of applications and the databases behind them. Unfortunately, the root cause of performance issues is often difficult to identify, and the challenge is often compounded by DBAs with mixed expertise in problem resolution. Due to a lack of sophisticated, intuitive tools available today to assist DBAs in supporting SQL Server, businesses are looking for ways to maximize their SQL Server investment and make their cross-platform DBAs more productive.

Spotlight[®] on SQL Server Enterprise is a powerful database diagnostic and resolution tool. Its unique user interface provides an intuitive, visual representation of SQL Server database activity. Graphical flows illustrate the rate at which data is moving between server components. Icons display the value of key statistics and metrics. User-defined performance thresholds help identify bottlenecks and other potential problems. Drilldowns provide a detailed portrait of SQL Server metrics. By integrating metrics from various sources into a single display, Spotlight combines data from SQL Server system tables, SQL commands, performance monitor counters, and the Windows registry. Spotlight monitors both SQL Server and the underlying operating system on which it is running.

With the Enterprise version of Spotlight, diagnostic data can be collected continuously, even when Spotlight is not open on the desktop. Spotlight's Diagnostic Server can perform data collection continuously from a middleware machine, making database information ready for review when Spotlight is started on any client machine.



Spotlight on SQL Server Enterprise's Topology view displays at a glance the health of your complete SQL Server environment.

System Requirements*

Spotlight can diagnose SQL Server instances of the following versions

- SQL Server 2000
- SQL Server 2000 (64-bit)
- SQL Server 2005 (64-bit)

Client Minimum Hardware

- 500 Mhz pentium III PC
- 60 megabytes of free local disk space
- 256 megabytes of RAM (minimum) 512 megabytes recommended

Client Minimum Software

Windows 2000, Windows XP or Windows Server 2003

- Windows 2000 (professional, Server, Advanced Server, Data-center server) with Service pack 4
- Windows XP with SP1 or 2

SQL Server 2000 Client Tools

- Microsoft Data Access Components (MDAC) 2.7 or later
- Microsoft Internet Explorer 4.0 or later

Diagnostic Server Minimum Hardware

- 1 GHz pentium 4 PC or later running Windows 2000, Windows XP, or Windows Server 2003.
- 10 GB of free disk space (Recommend additional 15 GB per connection for history)
- 1 GB of RAM (minimum)

Diagnostic Server Minimum Software

- Windows 2000, Windows XP or Windows Server 2003.



Please refer to our Web site for regional and international office information.

Real-Time Display of Database Activity

Unlike other diagnostic tools, Spotlight displays a graphical representation of activity occurring in real time between the fundamental components of the SQL Server architecture. The main screen displays such components as memory, disk storage and SQL processes. Pulses traveling between these components represent the relative rate of data transfer and the level of activity within SQL Server. These flow rates adjust to the performance characteristics of your specific server.

Online SQL Server Tuning Guide

Spotlight's online help provides detailed instructions for tuning and diagnosing SQL Server performance problems. Material in the tuning guide was contributed by Quest Software's industry experts.

Detailed Session-Tracking Capabilities

The top sessions and session details screens allow DBAs to quickly determine the users who are consuming the most resources. Multiple panels show session details about every aspect of user activity, which allows viewing of SQL statements, SQL I/O, locks and waits over time.

Diagnostic Server

Continuous data monitoring and collection from a central middleware machine, making database information ready for review when Spotlight is started on any client machine. Historical data is saved in one place (on the Diagnostic Server), avoiding unnecessary replication of data. Also, because queries are executed only once (from the Diagnostic Server), there is no significant extra load on the database or OS as extra Spotlight clients are connected; they simply "subscribe" to the data already being collected.

About Quest Software, Inc.

Quest Software, Inc. delivers innovative products that help organizations get more performance and productivity from their applications, databases and Windows infrastructure. Through a deep expertise in IT operations and a continued focus on what works best, Quest helps more than 18,000 customers worldwide meet higher expectations for enterprise IT. Quest Software can be found in offices around the globe and at www.quest.com



©2006 Quest Software, Inc. All rights reserved. Quest and Spotlight are registered trademarks of Quest Software. All other brand or product names are trademarks or registered trademarks of their respective companies.