



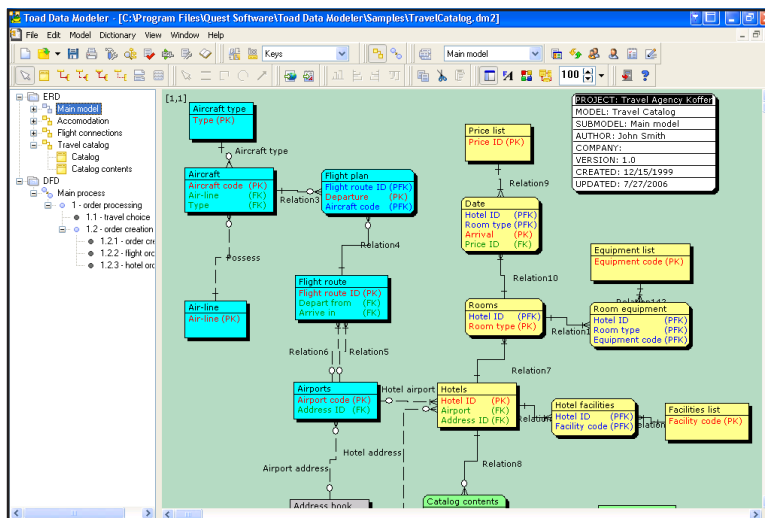
Toad™ Data Modeler

Create, Maintain and Document Quality Database Design

Many developers and database administrators require a data modeling tool to help them effectively build and manage databases. The need to see how the database is structured is critical, and it is common that a database is inherited, leaving the DBA or developer with little or no insight into its construction.

Quest Software's Toad™ Data Modeler helps organizations create, maintain and document their database systems with an easy-to-use graphical interface into new or existing database structures. Toad Data Modeler enables users to reverse engineer more than 20 different databases, design and generate SQL, create HTML or RTF reports, and generate data flow diagrams, in addition to versioning of database designs and creation of to-do lists. Highlights include:

- **Database design** — Create high-quality database structures, generated automatically, following standard best practice design methodologies
- **Documentation** — Generate high-quality, detailed reports for documenting existing database structures
- **Database redesign** — Take existing databases, redesign the model, and generate the new design SQL
- **Database migration** — Migrate existing database structures to a new database platform for migration or copy to a different database



Easy-to-use physical data modeling

Quick and Easy Database Design

With Toad Data Modeler, you can create large entity relationship diagrams for more than 20 databases with ease. The database development process is improved with features that enable users to:

- Reduce faults in development
- Improve productivity and create databases faster
- Verify data models automatically

- Design more than 20 databases
- Build entity relationship diagrams
- Generate SQL (DDL) scripts
- Reverse engineer databases
- Generate detailed HTML and RTF documentation
- Build data flow diagrams
- Export to XML and other popular formats

System Requirements

Client Requirements:

- Windows® 2000/NT/XP
- Pentium® 90 CPU 64 RAM
- 16 MB minimum available disk space

Connectivity Requirements:

Toad Data Modeler is able to use a number of different communication methods:

- ODBC
- ADO
- BDE
- Direct native connections

- Generate detailed reports
- Work with existing databases

When creating entity relationship diagrams, Toad Data Modeler considers individual database options, such as referential integrity, constraints, domains, triggers, stored procedures, functions and views.

Forward and Reverse Engineering

The reverse engineering process will extract the database's entities, attributes, relationships, indexes, triggers, procedures and other objects depending on the particular database. Not all of those features are supported by all databases. You can re-draw the database structure, convert to a new database platform and generate new SQL (DDL) scripts.

Database Documentation

Toad Data Modeler is an ideal tool for database reporting. You can easily generate entity relationship and data flow diagram reports with outputs such as: physical entity relationship diagram report, logical entity relationship diagram report, to-do list report, data flow diagram report, version comparison report and user permission report.

All reports are very detailed and contain information such as entity lists, relationship lists, entity relationship diagram snapshots, user type information, user roles, etc. Reports can be created for the entire model, just the sub models or both — or you can easily create your own extensive model reports.

Native Language Reporting

With Toad Data Modeler, you can create your own language report versions using the respective dictionary templates.

Data Flow Diagrams

In addition to entity relationship diagrams, you can create data flow diagrams with Toad Data Modeler. In the data flow diagram, you can make a layout of all data stores, processes, terminators, including data flows, and easily arrange the individual processes in your own mode.

Data flow diagram reports are simple to generate. The output document can be either an HTML report or an RTF report. The HTML report includes all images of all sub processes.

About Quest Software, Inc.

Quest Software, Inc. delivers innovative products that help organizations get more performance and productivity from their applications, databases and Windows infrastructure. Through a deep expertise in IT operations and a continued focus on what works best, Quest helps more than 18,000 customers worldwide meet higher expectations for enterprise IT. Quest Software can be found in offices around the globe and at

www.quest.com.



www.quest.com
e-mail: info@quest.com
Please refer to our Web site for international office information.