

# Quest Management Console for Exchange

## INTEGRATED EXCHANGE MANAGEMENT

### Quest products that integrate into the Management Console:

- MessageStats
- Archive Manager for Exchange
- Recovery Manager for Exchange
- Spotlight on Exchange
- ActiveGroups
- Self-Service Manager for Exchange

Exchange administrators today face an overwhelming task of trying to master numerous tools in their environment. This includes multiple consoles and Web portals, reporting engines, collection mechanisms, data stores and licensing schemes.

Quest® Management Console for Exchange provides a single administrative interface across all Quest Exchange management products. Based on the Microsoft Management Console (MMC), the interface allows Quest Exchange management products to “snap-in.” The console allows users to manage Exchange and its supporting infrastructure without having to leave the console.

This technology provides unique benefits and advantages:

### Streamline Exchange Management

With e-mail at the forefront of corporate communications, Exchange administrators have been thrust into the spotlight, knowing full well that any e-mail-related issue is usually well publicized and highly visible within their organization. With its single interface, the Management Console helps ease daily challenges that administrators or IT staff face when trying to keep Exchange running at maximum performance.

### Get More from your Existing Investments

In a typical day, an Exchange administrator must master numerous tools to effectively manage the day-to-day operations of their Exchange environment. MMC has become the administrator’s interface of choice for managing Windows-based solutions, such as Exchange. The Management Console leverages the experience you already have with MMC, reducing the need for extensive training on new tools.

Name	Last Modified	Author
Server Activity	5/25/2005	Quest Software
Server Mail Traffic	5/25/2005	Quest Software
Delivery Times	5/25/2005	Quest Software
Message Sizes	5/25/2005	Quest Software



# Quest Management Console for Exchange

## INTEGRATED EXCHANGE MANAGEMENT

### Hardware Requirements (Minimums)

- Processor- Pentium III or greater, running at a minimum speed of 800 MHz
- Ram- 512 MB
- Disk- 60 MB of free disk space
- Monitor- Video Card and Monitor - minimum resolution 800 x 600, 256 colors
- Network Connector- Network Interface Card (NIC)
- Peripheral Device- Pointing Device

### Software Requirements (Minimums)

Operating System(s)

- Microsoft Windows 2000 SP4
- Microsoft Windows XP SP1
- Microsoft Windows Server 2003 (Standard or Enterprise Edition) Peripheral
- Microsoft Windows 2000 or Microsoft Windows 2003 System Administration Tools Pack
- Microsoft Exchange 2000 or Microsoft Exchange 2003 System Manager Tool

Note: Microsoft Windows 2003 System Administration Tools Pack must be installed on Microsoft Windows XP computer.s

**Alternate Views:** The Management Console allows users to re-organize and display pieces or subsets of a snap-in's object hierarchy (i.e. Administrative View, Servers View and Routing View). This allows you to view your organization in different ways, based on the type of task you are performing. In addition, you can create dynamic alternate views based on filter criteria.

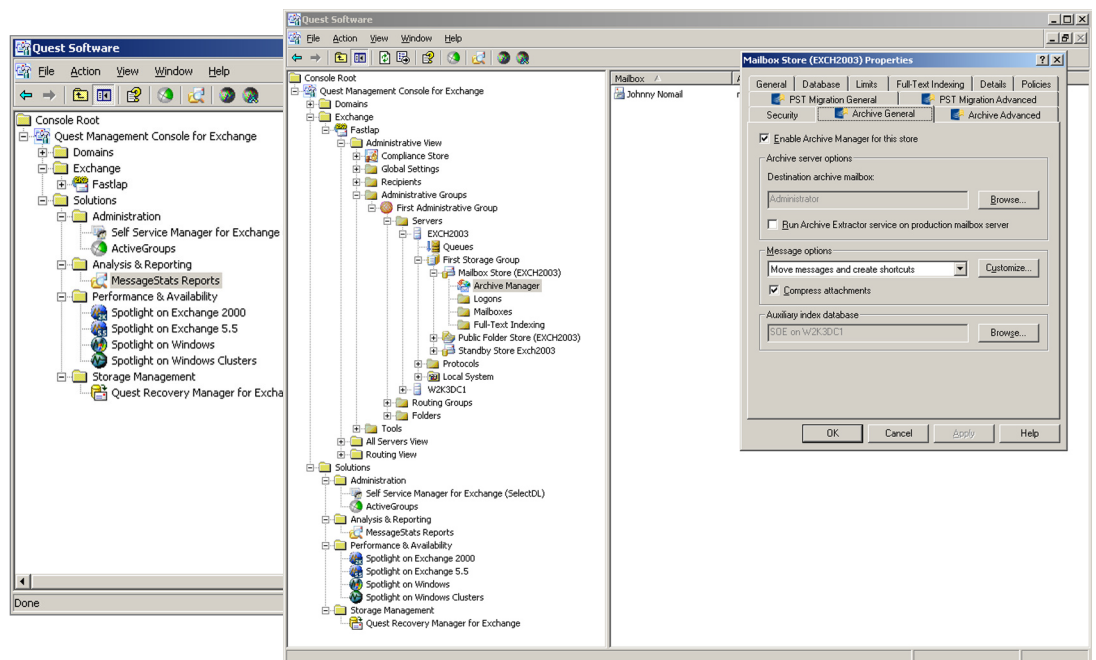
**Nested Snap-Ins:** The Management Console allows embedding Computer Management into the Exchange System Manager/Active Directory Users and Computers Servers node. Snap-ins can be inserted into the hierarchy of another snap-in and pick-up the context of that snap-in, allowing the services on an Exchange server to be managed in-place, rather than with a separate tool.

**Snap-in Extension Support:** Extensions in the Management Console are automatically exposed in the tree. This means you can create child nodes, add actions to existing nodes, and add property pages to existing nodes.

**Web Launch:** Any Web-based application can be launched from the Management Console, streamlining administrative tasks.

**Auto Populate:** The Management Console automatically detects Quest Exchange management products in your environment and populates itself accordingly.

**Comprehensive Exchange Administration:** The Management Console works with Quest Exchange management products including Quest® MessageStats, Quest® Archive Manager for Exchange, Quest® Recovery Manager for Exchange, Quest® Spotlight® on Exchange, Quest® ActiveGroups and Quest®Self-Service Manager for Exchange..



www.quest.com/microsoft  
e-mail: info@quest.com  
Please refer to our Web site for international office information.



©2005 Quest Software, Inc. All rights reserved. Quest, Management Console for Exchange are registered trademarks of Quest Software. All other brand or product names are trademarks or registered trademarks of their respective companies.

WMG\_MCEX\_DS\_EX\_12202005