

# Stat™ v4.0.4 for PeopleSoft 8.4

## A PeopleSoft 8.4 Certified Software Integration

Delivers change management and version control

Reduces overall cost of ownership

Quest Software is a leading provider of application management solutions. Quest provides customers with Application Confidence<sup>sm</sup> by delivering reliable software products to develop, deploy, manage and maintain enterprise applications without expensive downtime or business interruption. Quest products increase the performance and uptime of business-critical applications and enable IT professionals to achieve more with fewer resources. Headquartered in Irvine, Calif., the company has offices worldwide and more than 18,000 global customers.

### Integration Overview

Stat provides project team members the ability to successfully manage the evolution of their PeopleSoft applications, from initial implementation throughout ongoing enhancements and upgrades. This is accomplished through the PeopleSoft exclusive object/file locking, version control, and migration management functionalities. The Stat database becomes a knowledge repository for all enhancement, upgrade, or issue resolution information. Stat enables teams to manage complex projects from one central location providing an easy way to assemble and track a variety of activities for implementation, enhancement, or upgrade projects. Stat's workflow streamlines and controls all project activities. This is essential when a project encompasses multiple phases, requires a variety of resources, and includes people from multiple groups or business units.

### Partner company/PeopleSoft integration

Stat uses a PeopleSoft-delivered CLI, so the integration between Stat and PeopleSoft is non-intrusive and non-destructive.

- Object locking. Stat expedites the development cycle by coordinating development activities for PeopleSoft objects and flat files across all databases. During the development life cycle, you can lock PeopleSoft objects across all designated PeopleSoft databases to prevent development conflicts and overwrites.
- Version control. PeopleSoft objects and flat files can be versioned and indefinitely stored in the Stat repository. At any time, modified objects/files can be easily recovered or “rolled back” to a prior version even if the object/file no longer exists in the PeopleSoft environment.
- Migration management. Stat manages the automatic migration of objects and flat files across the development and production environments while creating a real-time, permanent audit trail that includes who performed the migration, the source and target databases, date and time, and the objects/files migrated.

### Availability

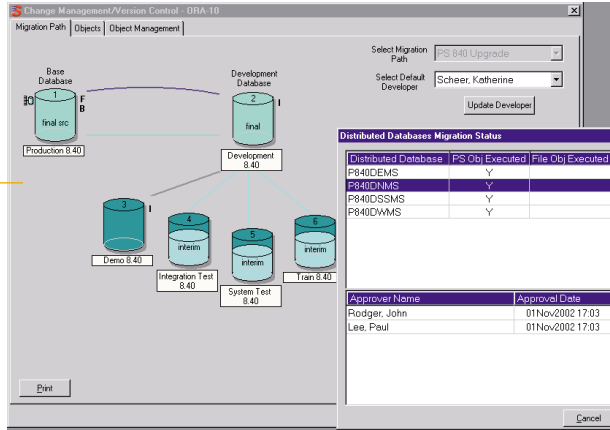
Stat 4.0.4 is available from Quest Software. Contact a Quest Software Sales Representative at 800 306 9329 or [info@quest.com](mailto:info@quest.com)

### Support

Stat is fully supported by Quest Software. For support, please call Quest Software Support at 949 754 8000 or by email at [support@quest.com](mailto:support@quest.com)

## Stat Migration Management

The Stat Migration Path screen provides an up-to-date view of all migration history for an enhancement, upgrade or fix. The distribution database provides a "one-to-many" migration option.



### Certification Environment

**Hardware:** Intel, RS6000

**Software:** PeopleTools 8.4, Stat 4.0.4

**Database platforms:** Microsoft SQL Server 2000, Oracle 8

**Operating systems:** Windows NT4, AIX 4.3

### PeopleSoft Certified Software Integrations

When PeopleSoft conducts certification testing, we verify only that the software integration functions according to the partner's test plan, and that it makes appropriate use of PeopleSoft components and integration technologies in the environment specified in the published Certification Datasheet. Certification applies only to the components providing integration between the partner's software and PeopleSoft software; it does not apply to or extend to the partner's software product(s). Certification is

performed in a lab environment using uncustomized versions of PeopleSoft and the partner's software. Certification testing is product version specific, hardware specific, database specific, and operating system specific, and is conducted in English, unless explicitly noted otherwise. Similar results may not be able to be duplicated in a production environment, including where the PeopleSoft or partner software is modified or customized upon implementation. Customers are solely responsible for the selection of all third-party software, including any integration software, used in conjunction with PeopleSoft software and for the results of such use. For the functional and environmental details on a certified integration, refer to the partner's Certification Datasheet, found in the Alliances section of the PeopleSoft Web site at [www.peoplesoft.com](http://www.peoplesoft.com).

PeopleSoft.

QUEST SOFTWARE™

PeopleSoft.  
certified  
AppConnect Version 8.4

**PeopleSoft, Inc.**  
**Corporate Headquarters**  
 4460 Hacienda Drive  
 Pleasanton, California 94588 USA  
 Toll-free 1 888 773 8277  
 Tel 925 694 3000  
[www.peoplesoft.com](http://www.peoplesoft.com)

**Quest Software, Inc.**  
 8001 Irvine Center Drive  
 Irvine, California 92618 USA  
 Tel 949 754 8000  
[www.quest.com](http://www.quest.com)

PeopleSoft, PeopleTools, PS/nVision, PeopleCode, PeopleBooks, PeopleTalk, and Vantive are registered trademarks, and Pure Internet Architecture, Intelligent Context Manager, and The Real-Time Enterprise are trademarks of PeopleSoft, Inc. All other company and product names may be trademarks of their respective owners. The information contained herein is subject to change without notice.  
 Copyright © 2002 PeopleSoft, Inc. All rights reserved.