

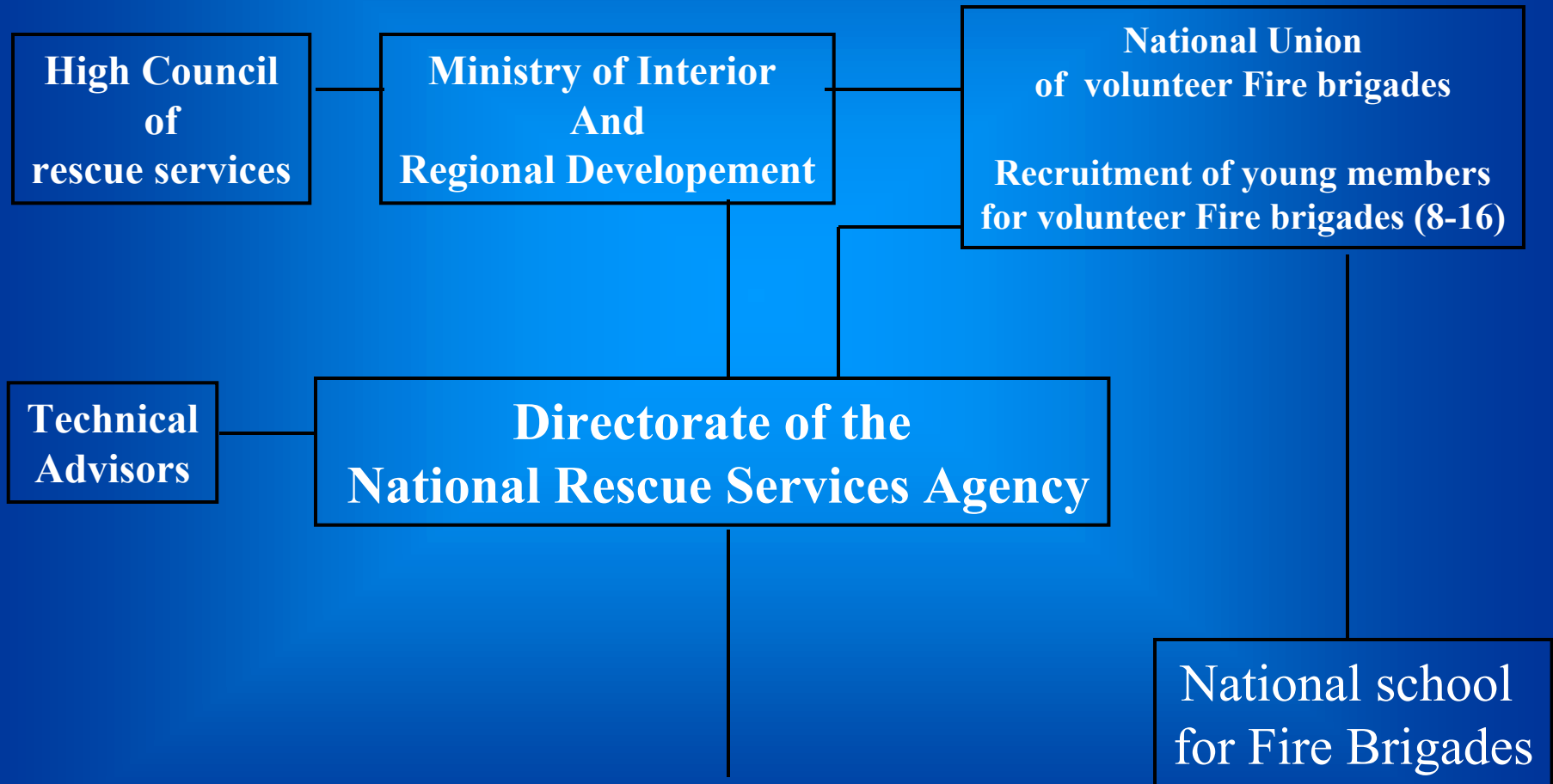


LE GOUVERNEMENT  
DU GRAND-DUCHÉ DE LUXEMBOURG  
Administration des services de secours

*Présidence luxembourgeoise  
du Conseil de l'Union européenne*

Presentation of the  
National Rescue Services Agency  
in Luxembourg

Organization chart of the National Rescue Services Agency



# National Rescue Services Agency

## Directorate of the National Rescue Services Agency

General Director: Dr. Michel FEIDER

### Division of Civil Protection

Head of Division:  
Mr Guy Bley

### Division of Fire and Rescue services

Head of division:  
Mr Georges Scheidweiler

### Administrative, Technical and Medical Division

Head of division:  
Mrs Viviane Coner

# Division of Civil Protection

First Aid Courses

Safety and Health at Work

Rescue Units

Evacuation Centres

National school of Civil Protection

National Support Base

SAMU Medical Emergency

Canine Rescue unit

Rescue Divers

Radiologic Protection Unit

Warning And Detect. group

Psych. Support unit

Hum. Interv Team

Chemical Intervent Unit

Logistics Unit Food

Regional Support Bases

Local Intervent. centres

Division  
of Fire  
and Rescue  
Services

National Union  
of volunteer  
Fire brigades

Fire  
Inspectors

National base  
of the Fire and  
Rescue services

Regional bases  
of Fire and  
Rescue services

Local  
Fire brigades

National school  
for Fire Brigades

Training for  
the Fire Brigades

Administrative,  
Technical and  
Medical  
Division

```
graph TD; A["Administrative, Technical and Medical Division"] --- B["Administrative Services (Budget, Hum. Ressources, Secretariat, calls for tender, etc)"]; A --- C["Technical Service"]; A --- D["Medical Service"]; A --- E["Vehicle Fleet, Equipment, Stocks"];
```

Administrative  
Services  
(Budget,  
Hum. Ressources,  
Secretariat, calls  
for tender, etc)

Technical  
Service

Medical  
Service

Vehicle Fleet,  
Equipment,  
Stocks

# ProCiv 2005

Priorities of the Luxembourg  
Presidency in the field of Civil  
Protection



*Présidence luxembourgeoise  
du Conseil de l'Union européenne*



# 1. Mandate of the Working Party

Discussion about an adapted mandate of  
the working party on civil protection  
(PROCIV)



*Présidence luxembourgeoise  
du Conseil de l'Union européenne*

# 1.1. Mandate PROCIV

- Initiative Italie
- Decision-making structures
  - Directors-Generals, Council Working Party, Management and Regulatory Committee
- Relationship with other European policy areas
  - Justice and Home Affairs
  - Crisis-management in the Framework of European Security and Defence Policy
  - Counter-Terrorism Coordinator



## 1.2. Discussions about Mandate

- The mandate of PROCIV in relation to the two other civil protection platforms
- The mandate of PROCIV in relation to other Council Working Parties



## 2. Terrorism Road Map

Contribute to the report on Terrorism to the  
European Council



*Présidence luxembourgeoise  
du Conseil de l'Union européenne*

## 3.1. EU-ICMA

- Joint initiative Austria, Luxembourg, Netherlands and United Kingdom
- Cross-pillar issue: Task Force Police, Directors-Generals for Civil Protection, 1st and 3rd pillar Council Working Groups should be included
- 3rd pillar have the leading role



## 3.2. Objectives of the initiative

- Setting up an integrated EU crisis arrangement for crisis with cross border effects
- Examine police cooperation between member states in crisis with cross border effects
- Strengthening coordination between police and civil protection



## 3.3. Objectives of the initiative

- Contribute to the improvement of cooperation of the member states in the field of civil protection and the further development of the EU-Mechanism
- Contribute to the development of arrangements for crisis outside the EU



# 4. Action Programme and Mechanism

First consideration of the Commission paper on the evaluation of the Civil Protection Action Programme, the Mechanism and Marine Pollution Assistance Decision



*Présidence luxembourgeoise  
du Conseil de l'Union européenne*



# 5. Cooperation with International Organisations

Information about ongoing processes: EU-UN,  
EU-NATO



*Présidence luxembourgeoise  
du Conseil de l'Union européenne*

# 6. Civil Protection Capabilities

Consider the Commission report on the assessment of civil protection capabilities



*Présidence luxembourgeoise  
du Conseil de l'Union européenne*

# 7. CIWIN/EPCIP

Critical Infrastructure Warning and Information System : Monitoring of the setting up of a network by the Commission  
Beginnings of the European Programme for Critical Infrastructure Protection



*Présidence luxembourgeoise  
du Conseil de l'Union européenne*

## 8. Directors-General Meeting

- Outcome
- Short and medium term proposals from the Commission to strengthen European Cooperation in the field of Civil Protection
- Encourage the Commission to take forward work in different areas



# 9. Improving the Civil Protection Mechanism

- CAGRE
- Discussions PROCIV: 25 mai 2005, 1  
june 2005
- Council Conclusions

