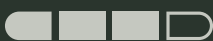




KRAEMER

Spun in
Nazareth,
Pennsylvania

EXPERIENCE



INTERMEDIATE

YARN

Summit Hill

100% Merino Superwash Wool

6 skeins Ruby or
color of your choice



Finished Size
44" wide by 37 3/4" high

GAUGE

16 sts = 4" / 10 cm



U.S. 9 / 5.5 mm 29" Circular
Needle and longer or size
needed to obtain gauge

Plus
14 Stitch Markers

KRAEMER YARNS

Summit Hill



WORSTED



Summit Hill Afghan

Designed Exclusively for Kraemer Yarns

by Marna Austin



A great afghan in Summit Hill, a superwash merino worsted weight yarn. Choose a combination of squares with a house, heart, tree or tulip design. A comfortably soft and warm afghan to cover you in your favorite chair or just as great draped over the back of your sofa.

Cast on 175 sts

Bottom & Top Border Rows

Rows 1 & 2 – K across

Row 3 – P1, (K1, P1) across

Row 4 – K1, (P1, K1) across

Rows 5-8 – K across

Row 9 – repeat Row 3

Row 10 – repeat Row 4

Rows 11-14 – K across

Row 15 – repeat Row 3

Row 16 – repeat Row 4

Rows 17-19 – K across

Pattern Rows

Row 1 – K13, PM, P17, PM, K5, *PM, P17, PM, repeat from * 5 times, K13

Row 2 - P1, (K1, P1) to next mkr, work 17 sts from row 1 of chosen graph, *P1, K1, P1, K1, P1, work 17 sts from row 1 of chosen graph, repeat from * to last mkr, P1, (K1, P1) to end of row

Row 3 - K1, (P1, K1) to next mkr, work 17 sts of row 2 from chosen graph, *K1, P1, K1, P1, K1, work 17 sts from row 2 of chosen graph, repeat from * to last mkr, K1, (P1, K1) to end of row

Row 4 - *K to next mkr, work 17 sts of row 3 of chosen graph, repeat from * to last mkr, K to end

Rows 5 – *K to next mkr, work 17 sts of row 4 of chosen graph, repeat from * to last mkr, K to end

Row 6 - *K to next mkr, work 17 sts of row 5 of chosen graph, repeat from * to last mkr, K to end

Rows 7 – *K to next mkr, work 17 sts of row 6 of chosen graph, repeat from * to last mkr, K to end

Row 8 - P1, (K1, P1) to next mkr, work 17 sts from row 7 of chosen graph, *P1, K1, P1, K1, P1, work 17 sts from row 7 of chosen graph, repeat from * to last mkr, P1, (K1, P1) to end of row

Row 9 - K1, (P1, K1) to next mkr, work 17 sts of row 8 from chosen graph, *K1, P1, K1, P1, K1, work 17 sts from row 8 of chosen graph, repeat from * to last mkr, K1, (P1, K1) to end of row

Row 10 - *K to next mkr, work 17 sts of row 9 of chosen graph, repeat from * to last mkr, K to end

Rows 11 – *K to next mkr, work 17 sts of row 10 of chosen graph, repeat from * to last mkr, K to end

Rows 12 – *K to next mkr, work 17 sts of row 11 of chosen

graph, repeat from * to last mkr, K to end

Rows 13 – *K to next mkr, work 17 sts of row 12 of chosen graph, repeat from * to last mkr, K to end

Row 14 - P1, (K1, P1) to next mkr, work 17 sts from row 13 of chosen graph, *P1, K1, P1, K1, P1, work 17 sts from row 13 of chosen graph, repeat from * to last mkr, P1, (K1, P1) to end of row

Row 15 - K1, (P1, K1) to next mkr, work 17 sts of row 14 from chosen graph, *K1, P1, K1, P1, K1, work 17 sts from row 14 of chosen graph, repeat from * to last mkr, K1, (P1, K1) to end of row

Row 16 - *K to next mkr, work 17 sts of row 15 of chosen graph, repeat from * to last mkr, K to end

Rows 17 – *K to next mkr, work 17 sts of row 16 of chosen graph, repeat from * to last mkr, K to end

Rows 18 – *K to next mkr, work 17 sts of row 17 of chosen graph, repeat from * to last mkr, K to end

Row 19 - P1, (K1, P1) to next mkr, work 17 sts from row 18 of chosen graph, *P1, K1, P1, K1, P1, work 17 sts from row 18 of chosen graph, repeat from * to last mkr, P1, (K1, P1) to end of row

Row 20 - K1, (P1, K1) to next mkr, work 17 sts of row 19 from chosen graph, *K1, P1, K1, P1, K1, work 17 sts from row 19 of chosen graph, repeat from * to last mkr, K1, (P1, K1) to end of row

Continue by working Rows 1-9 of Intermediate Border Rows

Intermediate Border Rows

Rows 1-4 – K across

Row 5 – P1 (K1, P1) across

Row 6 – K1 (P1, K1) across

Rows 7-9 – K across

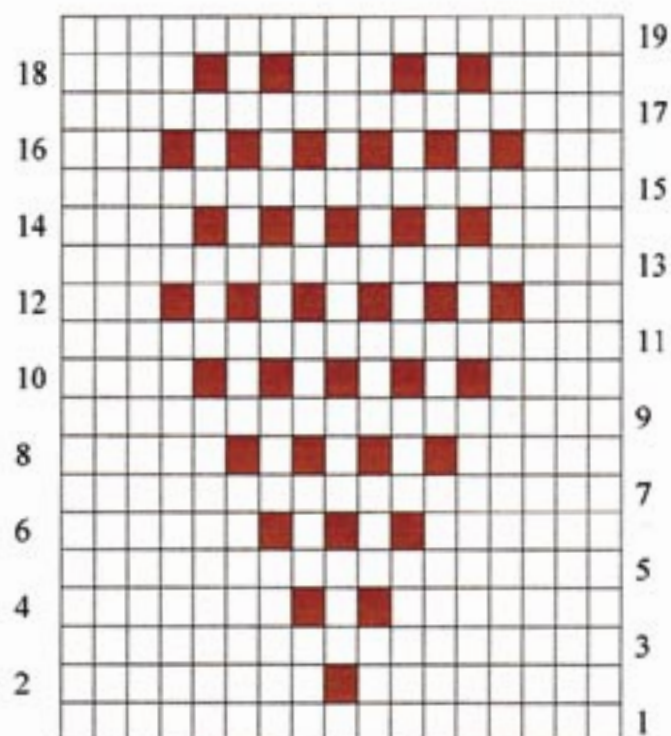
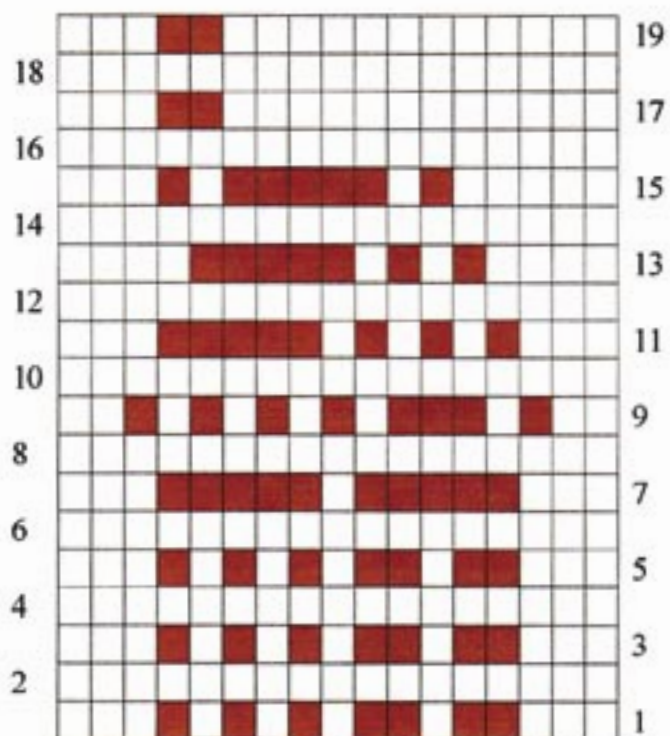
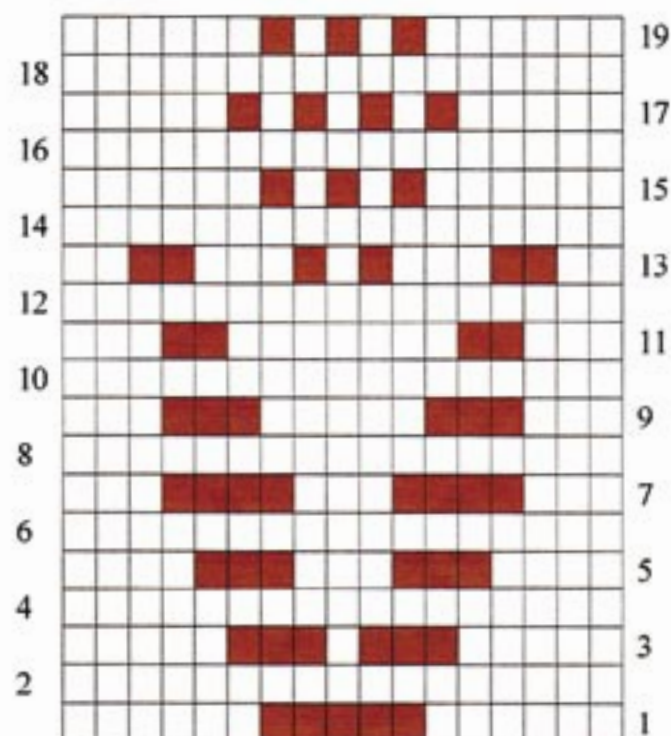
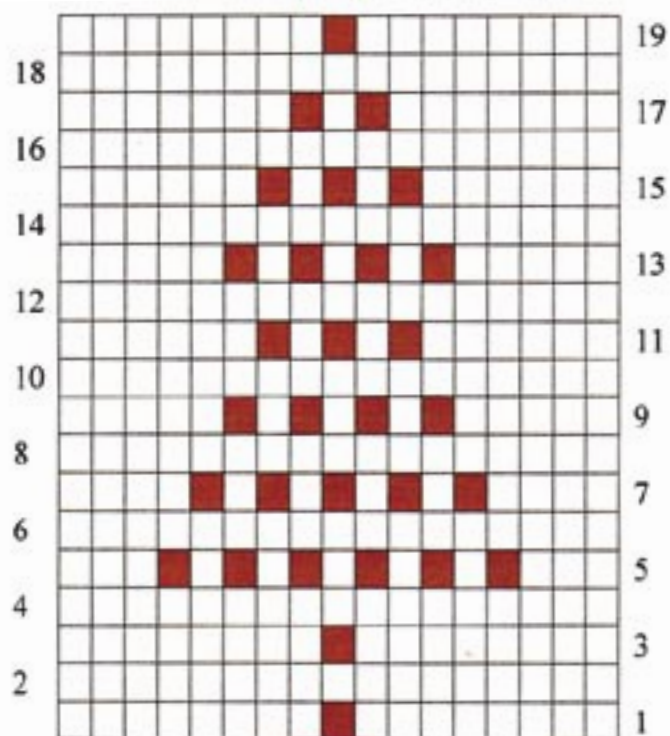
Repeat Rows 1-20 of Pattern Rows. Then repeat Rows 1-9 of Intermediate Border rows. Repeat these two sets of rows 5 more times (you will have 7 rows of pattern squares).

Now work Rows 1-19 of Bottom & Top Border Rows. Bind off

We are committed to excellence in our products and strive to make these instructions as accurate and complete as possible. However, we cannot be responsible for the variance of individual knitters and crocheters, human error, or typographical mistakes. If you have any questions, please e-mail us at info@kraemeryarns.com

COMMONLY USED KNITTING ABBREVIATIONS

beg	begin	M1	make one (increase 1 stitch)	ssk	slip 1, slip1, knit 2 slipped stitches together
BO	bind off	MC	main color	st st	stockinette (stocking) stitch (1 row K, 1 row P)
CC	contrasting color	P	purl	st(s)	stitch(es)
CN	cable needle	p2sso	pass 2 slipped stitches over	tbl	through back of loop
CO	cast on, cast off	P2tog	purl 2 stitches together (1 stitch decreased)	tog	together
cont	continue	patt rep(s)	pattern repeat(s)	WS	wrong side
dec(s)	decrease(s)/decreasing	patt(s)	pattern(s)	wyib	with yarn in back
dpn	double-pointed needles	PM	place marker	wyif	with yarn in front
g st	garter stitch (K every row)	pso	pass slipped stitch over	yo	yarn over
inc(s)	increase(s)/increasing	pwise	purlwise	yon	yarn over needle
K	knit	rem	remain(ing)	()	repeat instructions in parantheses number of times indicated
K1, s1, pssso	knit one, slip one, pass slipped stitch over	rep	repeat	*	repeat instructions following asterisk as indicated or until end of row
K2tog	knit 2 together	RH	right hand	[]	instructions in square brackets refer to larger sizes
K2tog tbl	knit 2 together through back loop	rnd(s)	round(s)		
kwise	knitwise	RS	right side		
LH	left hand	sl	slip		



	P on right side row, K on wrong side row
	K on right side row, P on wrong side row

Odd numbered rows are worked from right to left
Even numbered rows are worked from left to right