

Copyright 2004-2005 Kate Cygnar/SavvySeams. Some rights reserved.

Visit <http://www.savvyseams.com/> or email info@savvyseams.com for more information.

This work is licensed under the Creative Commons Attribution-NonCommercial-ShareAlike License.

To view a copy of this license, visit <http://creativecommons.org/licenses/by-nc-sa/2.0/>
or send a letter to Creative Commons, 559 Nathan Abbott Way, Stanford, California 94305, USA.

General Information About This Pattern

It is very important that you print this pattern out WITHOUT SCALING or RESIZING.

These options are in the print dialog box (the window that pops up when you go to print).

**To confirm the pattern is printed correctly,
measure either the large grid (should 8x10 inches)
or the small grid (should be 4x4 cm).**

After you print, using either a fabric pen, a fine-tip permanent marker or even a ball-point pen,
trace the patterns onto gridded pattern tracing paper or just plain, non-fusible interfacing.

See <http://www.savvyseams.com/gettingstarted.php> for more help.

Since the instructions are accompanied by photos rather than illustrations, these are available as a webpage.
If you wish to print out the instructions minus the photos, there is a link to a text file on each instructions page.

All patterns and instructions are available at

<http://www.savvyseams.com/>

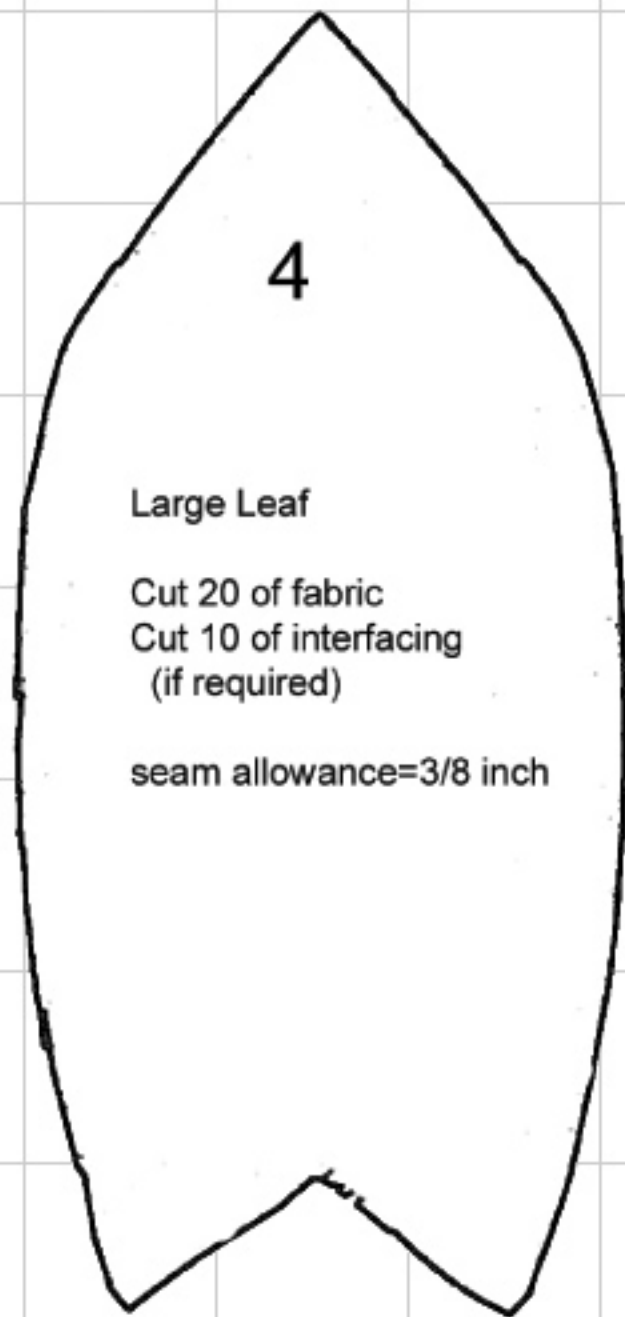
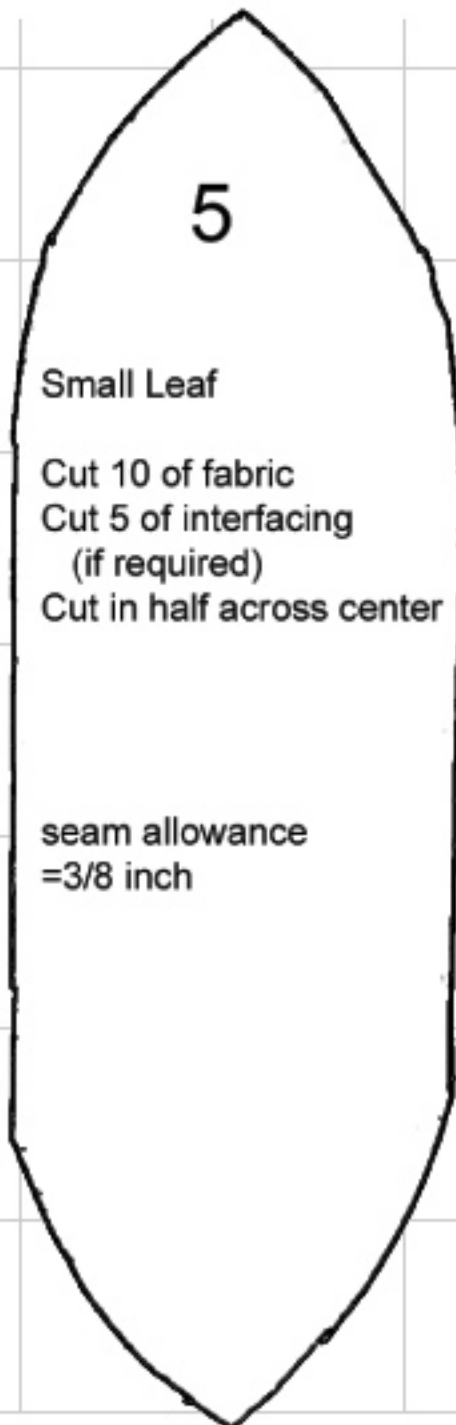
1 cm

1 inch

Tudor Rose Purse

There are 5 pieces for this pattern.

The best way to use the patterns is to trace them onto mid- or heavy weight non-fusible interfacing use a fabric pen, fine-point permanent marker or even a rollerball pen. You can also use gridded pattern-tracing paper, although the non-fusible interfacing tends to hold up better.

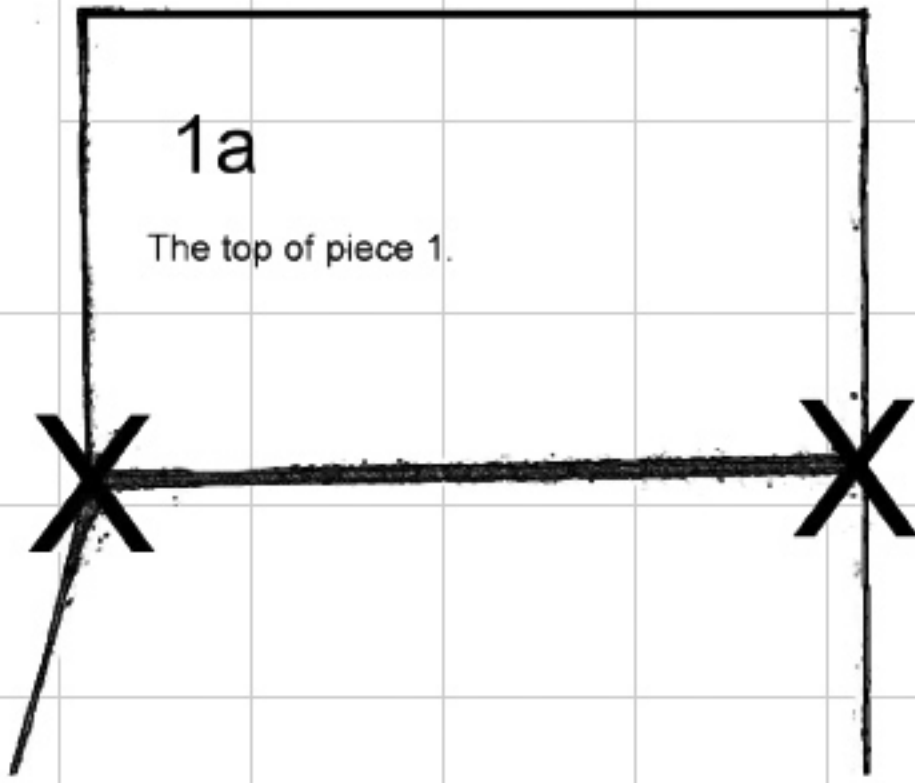


1 cm

1 inch

1a

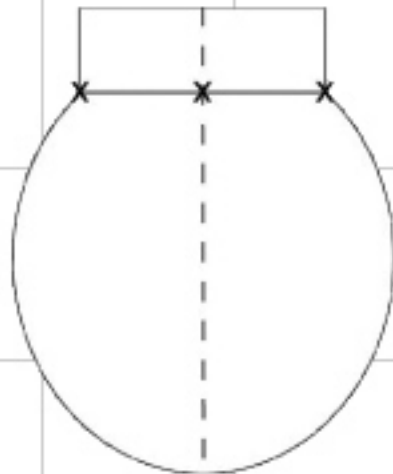
The top of piece 1.

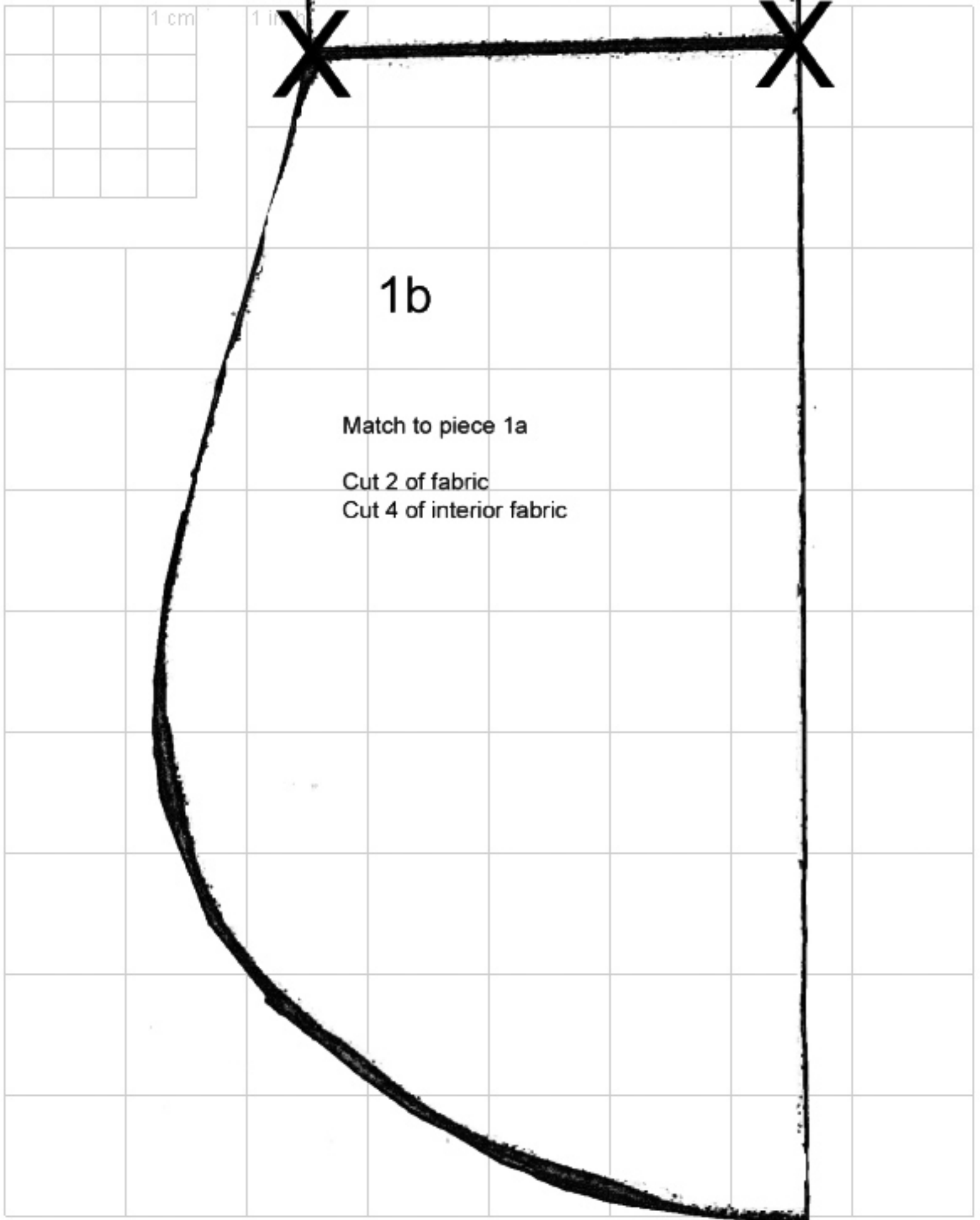
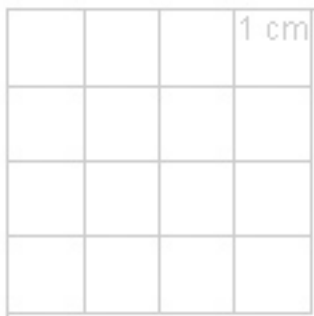


Pattern Piece 1 notes:

Match top section "1a" to bottom section "1b" on thick line and "X"s.

When tracing, flip on the vertical axis to complete the whole pattern like below:





1b

Match to piece 1a

Cut 2 of fabric

Cut 4 of interior fabric

1 cm

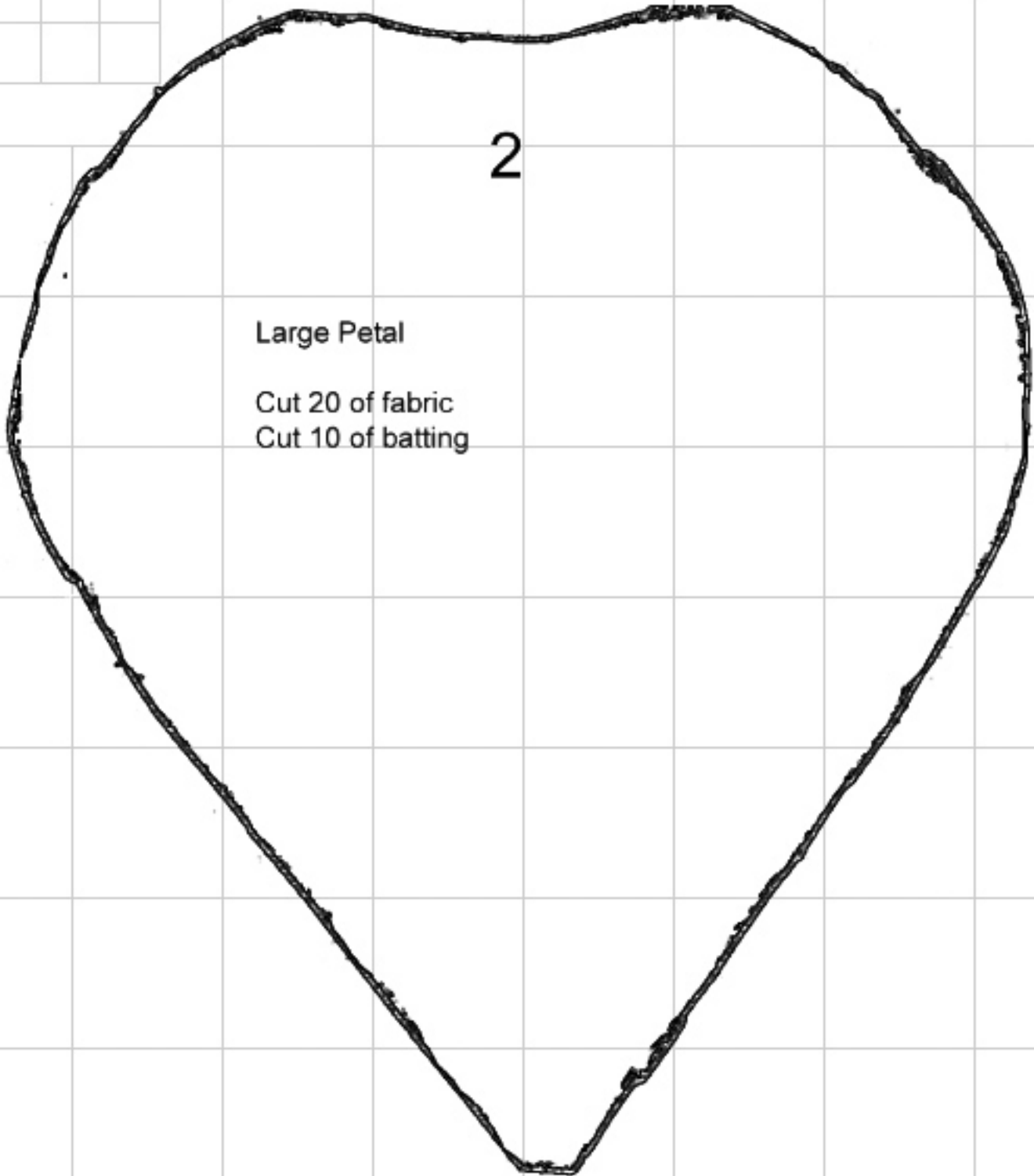
1 inch

2

Large Petal

Cut 20 of fabric

Cut 10 of batting



1 cm

1 inch

3

Small Petal

Cut 20 of fabric
Cut 10 of batting

Template For Flower Center

Whatever method you choose
to embellish the center of your purse
make sure the final product is this size