

# HSBC WARATAHS HOSPITALITY 2007



**FIXTURES**

**CLUB WARATAH**

**WARATAH WING**

**CORPORATE BOXES**

**PRIVATE SUITES**

**VANTAGE POINT**

**SEASONAL PRICING**

**TRI-PACK & CASUAL PRICING**

For more information please contact the sales and marketing team on

**1800 88 55 55**

[www.aussiestadium.com.au](http://www.aussiestadium.com.au)



# FIXTURES

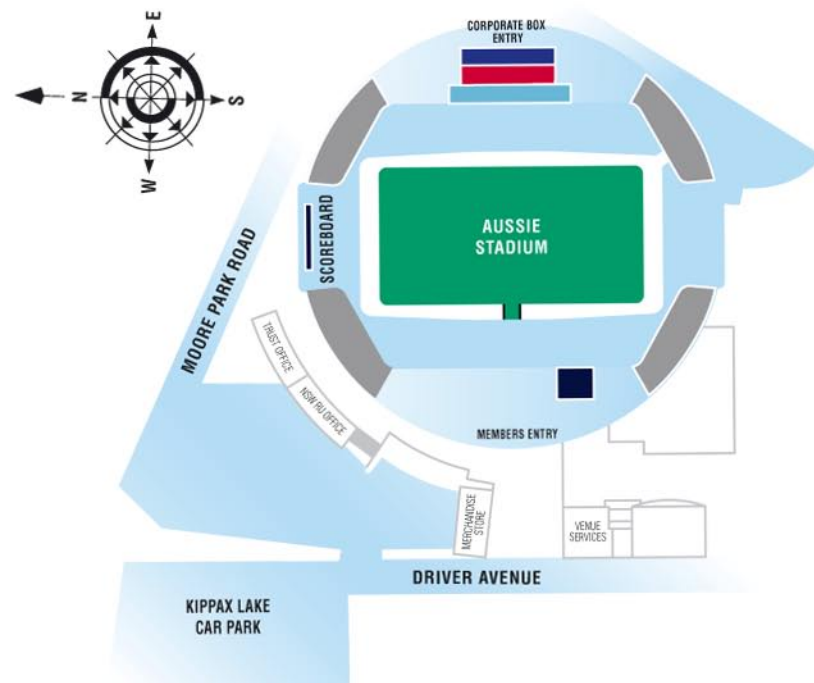
WEEK	DAY	DATE	TIME	MATCH	VENUE
<b>ROTOHAHANA CHALLENGE</b>	<b>THURSDAY</b>	<b>25 JAN</b>	<b>7.40pm</b>	<b>HSBC WARATAHS V CRUSADERS</b>	<b>SYDNEY, AUSSIE STADIUM</b>
ROUND 1	SATURDAY	3 FEB		CATS V HSBC WARATAHS	JOHANNESBURG
ROUND 2	SATURDAY	10 FEB		SHARKS V HSBC WARATAHS	DURBAN
ROUND 3	SATURDAY	17 FEB		CHEETAHS V HSBC WARATAHS	BLOEMFONTEIN
ROUND 4	FRI - SUN	23 - 25 FEB		BYE	BYE
<b>ROUND 5</b>	<b>FRIDAY</b>	<b>2 MAR</b>	<b>7.40pm</b>	<b>HSBC WARATAHS V WESTERN FORCE</b>	<b>SYDNEY, AUSSIE STADIUM</b>
<b>ROUND 6</b>	<b>SATURDAY</b>	<b>10 MAR</b>	<b>7.40pm</b>	<b>HSBC WARATAHS V BULLS</b>	<b>SYDNEY, AUSSIE STADIUM</b>
<b>ROUND 7</b>	<b>SATURDAY</b>	<b>17 MAR</b>	<b>7.40pm</b>	<b>HSBC WARATAHS V STORMERS</b>	<b>SYDNEY, AUSSIE STADIUM</b>
ROUND 8	FRIDAY	23 MAR		BLUES V HSBC WARATAHS	AUCKLAND
<b>ROUND 9</b>	<b>SATURDAY</b>	<b>31 MAR</b>	<b>7.40pm</b>	<b>HSBC WARATAHS V CRUSADERS</b>	<b>SYDNEY, AUSSIE STADIUM</b>
ROUND 10	SUNDAY	8 APR		BRUMBIES V HSBC WARATAHS	CANBERRA
<b>ROUND 11</b>	<b>SATURDAY</b>	<b>14 APR</b>	<b>7.40pm</b>	<b>HSBC WARATAHS V REDS</b>	<b>SYDNEY, AUSSIE STADIUM</b>
<b>ROUND 12</b>	<b>SATURDAY</b>	<b>21 APR</b>	<b>7.40pm</b>	<b>HSBC WARATAHS V HIGHLANDERS</b>	<b>SYDNEY, AUSSIE STADIUM</b>
<b>ROUND 13</b>	<b>FRIDAY</b>	<b>27 APR</b>	<b>7.40pm</b>	<b>HSBC WARATAHS V CHIEFS</b>	<b>SYDNEY, AUSSIE STADIUM</b>
ROUND 14	SATURDAY	5 MAY		HURRICANES V HSBC WARATAHS	WELLINGTON
SEMI FINAL	FRIDAY	11 MAY		SEMI FINAL 1	TBC
SEMI FINAL	SATURDAY	12 MAY		SEMI FINAL 2	TBC
FINAL	SATURDAY	19 MAY		FINAL, TBC	TBC
<b>TOUR MATCH</b>	<b>TBC</b>	<b>TBC</b>	<b>TBC</b>	<b>TBC</b>	<b>SYDNEY, AUSSIE STADIUM</b>

■ NSW School Holidays

## MAP

### MAP LEGEND

- Club Waratah
- Waratah Wing
- Corporate Boxes
- Private Suites
- Vantage Point



**MENU**  
**NEXT**

# CLUB WARATAH

Club Waratah is the venue of choice for dedicated rugby fans wishing to entertain guests within a relaxed, contemporary environment.

This package suits those seeking an informal entertainment experience that still provides premium hospitality with outstanding personalised service. Interviews with high profile special guests ensure an inner sanctum experience for those privileged to be a part of this exclusive club.

The match can be viewed from the seating located in front of the room, halfway between the 50m and 22m lines on level two of the Western (Members) Grandstand - considered amongst the best seats in the house.

## INCLUSIONS

- Fully transferable Club Waratah membership with level two seating immediately in front of the room
- Dedicated Club Waratah Host and MC - Toby Lawson, ABC rugby commentator
- Special guest and player interviews
- Live music
- Match day programmes in the room, one per two guests
- One car parking voucher per booking of four guests or more (this is not a reserved space)
- Business card draw
- Tipping competition for signed memorabilia
- TV monitors throughout the room
- A varied selection of canapés and substantial cocktail fare one and a half hours prior to and one hour after the match
- Half-time supper savouries and desserts
- Coffee, tea and infusions
- Premium selection of beer, wine and soft drink
- Steward service to your seating area

## PRICING

### Fully Catered

**Seasonal:** \$ 2,950 (\$368 pp per game)

**Tri-Pack:** \$ 1,350 (\$450 pp per game)

**Casual:** \$ 500 (\$500 per person)



**MENU**  
**NEXT**

# WARATAH WING

The Waratah Wing is the open-air Corporate Box seating located on the balcony on level two of the Nick Shehadie (Eastern) Grandstand between the 50m and 22m lines.

The combination of a themed on-site pre-match fine dining function, together with the best open-air box seats in the house, is ideally suited for guests who enjoy the highest level of traditional, quality hospitality.

## INCLUSIONS

- Twelve level two Bay 57 Corporate Box tickets
- Four match day programmes on your dining room table
- One car parking voucher per event (this is not a reserved space)
- Company identification on the dining table and your Corporate Box
- TV monitors throughout the dining room

## CATERING

- Two course dinner in the Eastside Dining Room prior to the match
- Half-time savouries delivered to your Corporate Box
- Premium selection of beer, wine and soft drink
- Steward service to your Corporate Box

## PRICING

Fully Catered

**Seasonal:** \$ 35,600 (\$370 pp per game)

**Tri-Pack:** \$ 16,250 (\$451 pp per game)

**Casual:** \$ 6,000 (\$500 per person)



**MENU**  
**NEXT**

# CORPORATE BOXES

Open-air Corporate Boxes are positioned between the 50m and 22m lines on level three of the Nick Shehadie (Eastern) Grandstand. Boxes include two rows of seating, an esky-style fridge and a food delivery counter.

Choose between an all inclusive, fully catered, 'in-seat' package or opt for a tickets only package where the level of catering can be arranged as required directly with All Leisure Hospitality, the Stadium's contracted caterer. The two levels of Corporate Box packages offered provide you with the flexibility to select the hospitality option most suited to your guests and your budget.

## INCLUSIONS

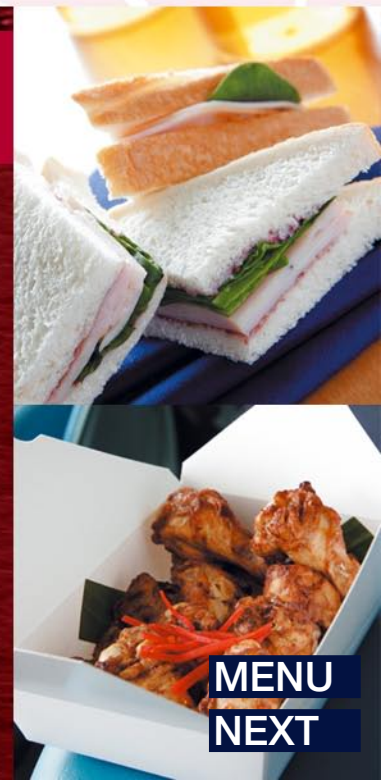
- Twelve open-air Corporate Box tickets
- Four match day programme vouchers
- One car parking voucher (this is not a reserved space)
- Company identification on your Corporate Box

## CATERING (when included)

- A substantial selection of hot and cold 'footy fare' finger food delivered to your Corporate Box
- Half-time savouries delivered to your Corporate Box
- Premium selection of beer, wine and soft drink throughout the event
- Steward service to your Corporate Box

## PRICING

	Fully Catered	Catering Additional
<b>Seasonal:</b>	\$ 29,800 (\$310 pp per game)	\$ 19,950 (\$208 pp per game)
<b>Tri-Pack:</b>	\$ 14,550 (\$404 pp per game)	
<b>Casual:</b>	\$ 5,250 (\$438 per person)	



# PRIVATE SUITES

Private Suites offer exclusivity and comfort within an indoor entertaining area. Suites are fully equipped with a colour television, buffet food service area, refrigerator and bar.

Each Suite has a superb view over the playing field from inside or from the adjoining, undercover balcony seating. Suites are the perfect option for those seeking a private facility in which to entertain their guests.

## INCLUSIONS

- Sixteen Private Suite tickets
- Four match day programme vouchers
- One car parking voucher (this is not a reserved space)
- Company identification on the door

## CATERING (when included)

- Arrival canapés, match day buffet and half-time savouries
- Premium selection of beer, wine and soft drink throughout the event
- Dedicated steward service

## PRICING

	Fully Catered	Catering Additional
Seasonal:	\$ 50,950 (\$398 pp per game)	\$36,950 (\$288 pp per game)
Tri-Pack:	\$ 23,350 (\$486 pp per game)	
Casual:	\$ 8,400 (\$525 per person)	



**MENU  
NEXT**

# VANTAGE POINT

Vantage Point provides a stand-up entertainment option, ideal for informal networking and a great view of the game.

This package is ideal for Rugby lovers wanting to make the most of their entertainment budget without having to arrange anything themselves. The seats are perfectly positioned on level three of the Nick Shehadie (Eastern) Grandstand between the 50m and 22m lines.

Vantage Point offers the flexibility to entertain as many or as few guests as desired and includes catering and drinks.

## INCLUSIONS

- Level three Premium Reserved seating
- Match day programmes in the room, one per two guests
- One car parking voucher per booking of ten guests or more (this is not a reserved space)

## CATERING

- A one hour pre-match cocktail function in the Paddington Room, level two Eastside Grandstand
- A selection of hot and cold finger food
- A premium selection of beer, wine and soft drink pre-match, at half-time and for 30 mins after the match

## AVAILABLE FOR THE FOLLOWING GAMES

Saturday	31 March	7.40pm	<b>HSBC Waratahs v Crusaders</b>
Saturday	14 April	7.40pm	<b>HSBC Waratahs v Reds</b>
Saturday	21 April	7.40pm	<b>HSBC Waratahs v Highlanders</b>

## PRICING Fully Catered

**Tri-Pack:** \$ 1,250 per person (\$416 pp per game)

**Casual:** \$ 450 per person

**Group bookings also available**



**MENU**  
**NEXT**

# SEASONAL PRICING TABLE

CLUB WARATAH	Individual Bookings	Catering Included	\$ 2,950 (\$ 368 pp per game)
WARATAH WING	12 Guests	Catering Included	\$ 35,600 (\$ 370 pp per game)
CORPORATE BOX	12 Guests	Catering Included	\$ 29,800 (\$ 310 pp per game)
		Catering Additional	\$ 19,950 (\$ 208 pp per game)
PRIVATE SUITE	16 Guests	Catering Included	\$ 50,950 (\$ 398 pp per game)
		Catering Additional	\$ 36,950 (\$ 288 pp per game)

Seasonal clients will have first option on their facility or equivalent there of should the HSBC Waratahs qualify for a home Semi-Final at Aussie Stadium.

#### Seasonal Package Events include:

Seven HSBC Waratahs Investec Super 14 Rugby games (catering included)  
 One HSBC Waratahs Inbound Tour game (catering included)  
 One HSBC Waratahs v Crusaders Rotomahana Challenge (tickets only)  
 One Tooheys New Cup Grand Final (tickets only)



# TRI-PACK AND CASUAL PRICING TABLE

			TRI-PACK	CASUAL
CLUB WARATAH	Individual Bookings	Catering Included	\$ 1,350 (\$ 450 pp per game)	\$ 500 per person
WARATAH WING	12 Guests	Catering Included	\$ 16,250 (\$ 451 pp per game)	\$ 6,000 (\$ 500 per person)
CORPORATE BOX	12 Guests	Catering Included	\$ 14,550 (\$ 404 pp per game)	\$ 5,250 (\$ 438 per person)
PRIVATE SUITE	16 Guests	Catering Included	\$ 23,350 (\$ 486 pp per game)	\$ 8,400 (\$ 525 per person)
VANTAGE POINT	Individual Bookings	Catering Included	\$ 1,250 (\$ 416 pp per game)	\$ 450 per person

#### Tri-Pack Events include:

A choice of three HSBC Waratahs Investec Super 14 Rugby games\*

Selection must include one team from A, B and C for an HSBC Waratahs home game.

**A.** One visiting Australian team - Western Force or Reds

**B.** One South African team - Bulls or Stormers

**C.** One New Zealand team - Crusaders, Highlanders or Chiefs

\*Vantage Point Tri-Pack is an exception and can only include the Crusaders, Reds and Highlanders combination.

#### Casual Packages:

Event selected on a per match or 'one off' basis.

Please note: Investec Super 14 casual packages will only be allocated after 31 January 2007. Booking forms submitted prior to this date will be waitlisted, however confirmation of casual bookings is strictly subject to availability once Seasonal bookings have been accommodated.

#### Catering:

For tickets only packages, catering is additional and can be ordered directly with All Leisure Hospitality, the Stadium's contracted catering service, on (02) 9360 0771.