

# Crossville: We're on our Way!

**Chess Federation still plans on moving to Crossville**

BY HEATHER MULLINIX  
Chronicle assistant editor

The United States Chess Federation board of directors has reaffirmed its decision to move the organization's headquarters to Crossville. In a 4-1 vote Oct. 17, the board approved a motion to move its national office to Crossville, reaffirming a 2003 decision.

Beatriz Marinello, president of the USCF, said Thursday the move was to be completed no later than March 31, 2005.

The first time the board

**"More than anything, Crossville has a good, viable chess community. And we will lower our overhead dramatically, resulting in immediate financial gains we can use for our mission."**

Beatriz Marinello  
President USCF

voted to move was in 2003," she said. "But a few months later we found we were in a difficult financial situation.

The board has been working very successfully to build up our finances, so we now have

See CHESS on page 3A

**Above:** The *Crossville Chronicle* headline says it all. Immediately after the October 17, 2004 vote, plans were set in motion to make it happen. Pat Knight, one of the movers and shakers in Tennessee scholastic chess, was hired as the relocation coordinator after the initial (and greatly appreciated) efforts of Gary Gillespie. Pat will stay on as Executive Assistant, replacing Barb Vandermark who moved to Florida.



**From left to right:** Cumberland County Mayor Brock Hill played an instrumental role in securing temporary space in downtown Crossville, while USCF's new business office is being constructed; USCF President Beatriz Marinello moved from Florida to New York in order to volunteer as Chief Operating Officer after Bill Goichberg resigned as Executive Director, spending two to three days a week in New Windsor, or Crossville, wherever she is needed; Tennessee Governor Phil Bredesen was present during the initial negotiations in 2003 with Frank Niro, and returned to Crossville after the USCF Executive Board reaffirmed its decision to make Crossville its new home; and Crossville Mayor J.H. Graham III, who played no small role in convincing the town council to donate three acres to the USCF, as part of its bid to bring the USCF to Crossville.

## TIMELINE:

\*Delegate's Meeting, Cherry Hill, NJ, 2002: Delegates agree to move USCF Headquarters out of New Windsor, New York. Bids are received from 29 cities. Executive Director Frank Niro evaluates the bids received and on July 16, 2003, came to an agreement with Crossville, Tennessee officials, to accept three acres of land as the site of the new USCF National business office.

\*Delegate's Meeting, Ft. Lauderdale, FL, 2003: Faced with a severe financial crisis, the Executive Board found itself without the funds needed to move. They re-opened the bidding process to allow competing cities to improve their bids. In the end, after holding their October meeting in Crossville, the Executive Board reaffirmed its decision to move to Crossville. March 15, 2005 was set as a target date.

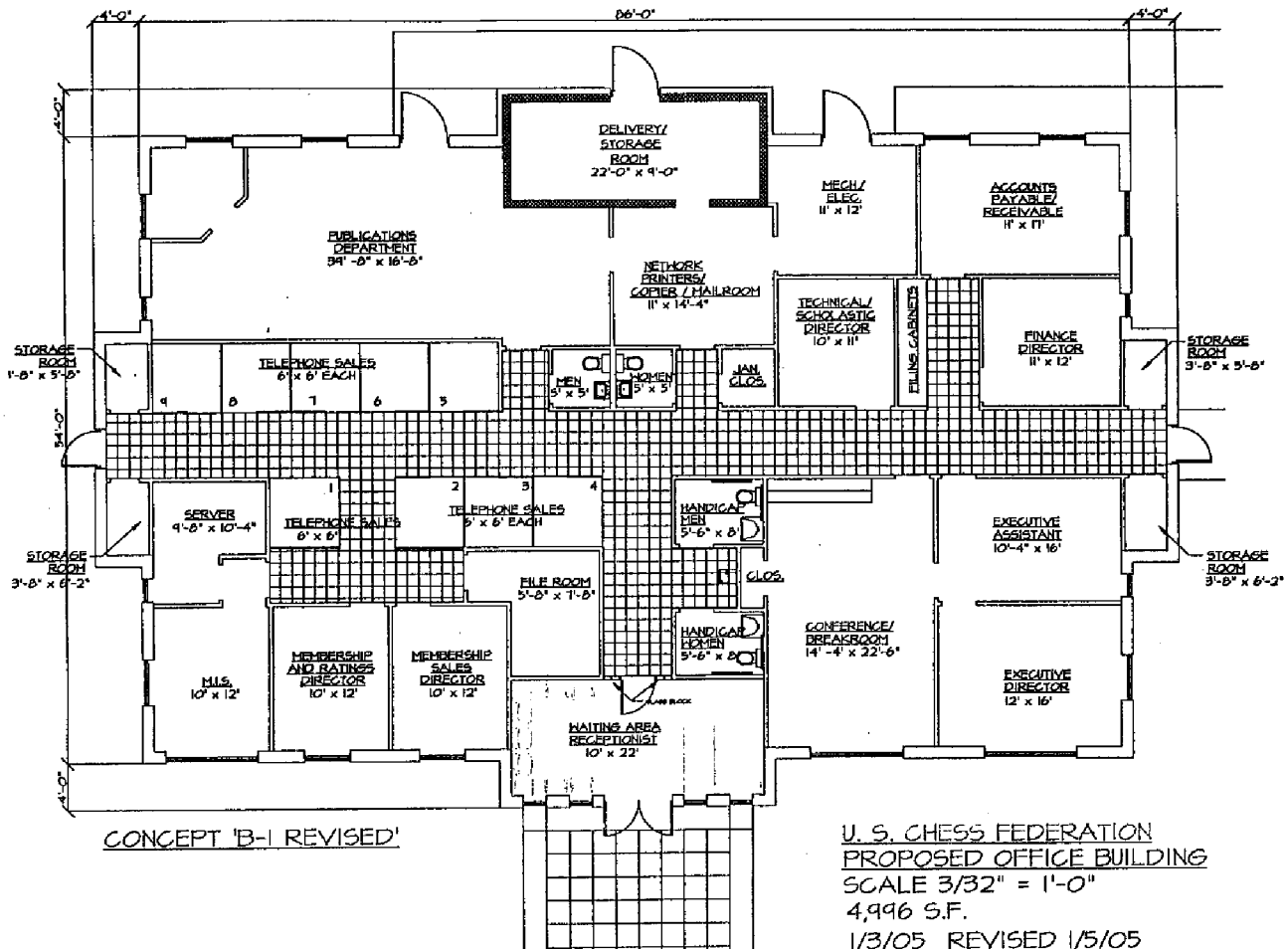
Sharp-eyed readers will notice we have changed USCF's mailing address in most places in the magazine to reflect the realization of the target date. In fact, the Crossville office opened February 14, 2005. By the time you read this, most of the membership and rating services, along with accounting, will be located in the "swing" space, a former Baptist Church, just a block off the main street of Crossville. This will serve as our business office until the new building is completed sometime in 2006.

The Publications Department (includes *Chess Life*) and correspondence chess will remain in New Windsor. After April 15, 2005, all mail directed to Suite 100, will automatically be forwarded to Crossville. Therefore, after April 15, all *Chess Life* articles, TLAs (Tournament Life announcements), display ads, and correspondence chess entries should be sent to:

USCF  
Suite 200  
3068 US Rte. 9W  
New Windsor, New York 12553  
Phone: 845-562-8350  
FAX: 845-236-4852

Starting now, all other mail, including memberships and rating reports, should be sent to:

USCF  
P.O. Box 3967  
Crossville, TN 38557  
PHONE: 931-787-1234  
FAX: 931-787-1200



It's no secret to the residents of Crossville. This sign has been up on O'Brien Drive for more than six months ...

... and this one has been in front of the old Baptist Church since January.



**Above:** The latest floor plan for the new USCF business office. Groundbreaking is tentatively scheduled for late August 2005, with a scheduled completion date in mid to late March 2006.

Correspondence chess is in the process of being outsourced to Alex Dunne. Therefore, game results, time complaints, vacation notices, etc., should be sent to Alex Dunne, P.O. Box 367, Sayre, PA 18840, or by email to: [alex.dunne@cqservices.com](mailto:alex.dunne@cqservices.com). Correspondence tournament entries are still to be sent to USCF in New Windsor at the address above, attn. Joan Dubois.

Please refer to page four for the latest e-mail addresses and extension numbers for staff members. As staff is transferred to Crossville, and as the New Windsor office is vacated, the extension numbers will change.

We further request that all change of address requests be made by e-mail [addresschange@uschess.org](mailto:addresschange@uschess.org) or mail. It will be anywhere from five to eight weeks before your address change is reflected in the main mailing list.

**WHOLESALE CHESS**  
 better prices. better products. better website.  
[www.wholesalechess.com](http://www.wholesalechess.com)



**CHESS SETS**



**TOURNAMENT SUPPLIES**



**ACCESSORIES and PRIZES**



**TEACHING EQUIPMENT**



**CLOCKS**

**[www.wholesalechess.com](http://www.wholesalechess.com)**  
**(888) 58-CHESS**