





## Notes on Electronic Edition

This edition is based on the printed edition published by Philipp Reclam jun., Leipzig in 1882.

All direct problems and selfmates have been computer tested using Matthieu Leschemelle's computer program *Problemiste*. The studies have been manually tested using *Fritz 6* with the Nalimov end-game database. The conditional problems, however, have only been checked for obvious errors.

Problems without a solution have been indicated with [†] after the stipulation, problems with short solutions with [§], and problems with multiple solutions with [\*], and an indication of the problem given after the (original) solution. Any other errors discovered in the original solutions have been added in brackets, but obvious misprints have been silently corrected.

Two oddities are worth mentioning. In two-mover 70, both black bishops are on white squares. In three-mover 58, the solution given in the original is faulty. Healey's own collection gives the correct solution, however.

Solutions have also been changed from long to short algebraic form, and slightly expanded in cases where the extremely contracted solutions of the original seemed excessive. Lines not present in the original solutions have not been added.



SAMMLUNG LEICHTERER  
SCHACHAUFGABEN

Zweiter Teil

Herausgegeben von Jean Dufresne

[1882]



## Vorrede

Die von mir im Jahre 1881 veröffentlichte „Sammlung leichter Schachaufgaben“ war ursprünglich nur dazu bestimmt, einen Anhang für mein „Kleines Lehrbuch des Schachspiels“ zu bilden. Die freundliche Aufnahme, die sie gefunden, sowie die unmittelbar an mich gerichtete Aufforderung zahlreicher Schachfreunde veranlassen mich, eine Fortsetzung folgen zu lassen, in der man jedoch auch eine Minderzahl schwierigerer Aufgaben antreffen wird. Um den inneren Zusammenhang beider Sammlungen zu unterhalten, habe ich den Titel nicht verändert.

In jene erste hatte ich viel amerikanische Aufgaben aufgenommen, welche Schönheit der Idee mit Gefälligkeit der Ausführung verbinden, namentlich, weil sie in Deutschland den Reiz der Neuheit für sich haben mußten. Ich entnahm sie theils ausländischen Schachzeitungen und Schachabschnitten, theils dem werthvollen Sammelwerke: „American chess nuts“, welches 1868 in New-York von E. B. Cook, W. R. Henry und G. A. Gilberg herausgegeben, 2400 Probleme umfaßt und die Lösungen in englischer Bezeichnung mittheilt. Die von mir daraus gewählten Meisterstücke Cheney's und Loyd's bilden, wie ich glaube, eine Zierde der ersten Sammlung.

In der Einleitung derselben ist der Werth der deutschen Problemcomposition genügend hervorgehoben.

Für die vorliegende zweite Sammlung habe ich eine größere Zahl deutscher Probleme zusammengestellt, welche gleich den übrigen fremdländischen, fast sämmtlich während der letzte beiden Jahrzehnte erschienen sind; jedoch einige ältere eingefügt, wie die des genialen englischen Problemcomponisten Graham Campbell, so wie andere, deren Ideen nachträglich häufig benutzt worden sind.

Man wird darunter vielen in Problemturnieren preisgekrönt

Compositionen begegnen. So haben z. B. die vierzügige No. 102 von Pradignat, die vierzügige von Fr. Dubbe No. 22 und von L. Noack No. 40 im Berliner Problemturnier des deutschen Schachbundes 1881 erste Preise erhalten. Der dreizügigen Aufgabe von Ehrenstein No. 42 und der vierzügigen von Dobruski No. 21 ist im Problemturnier von Brentano's Chess Monthly 1882, der vierzügigen von Schrüfer No. 46 im italienischen Problemturnier 1877 der erste Preis zuerkannt worden. Andere die Problemturniere betreffende Angaben wird man bei den Lösungen finden.

Da mir die Herren professor Johann Berger in Graz, Fr. Dubbe in Rostock, Max Kürschner in Nürnberg, Hermann Lehner in Wien, Nadebaum in Tessin, Fr. Schrüfer in Bamberg, eine Auswahl ihrer eigenen Compositionen zur Verfügung gestellt haben, halte ich es für meine Pflicht, für diese Freundlichkeit hiermit öffentlich meinen Dank auszusprechen. Ebenso danke ich Herrn Valentin für die gütige Ueberreichung vorzüglicher Ausgaben der von ihm redigierten „Frankfurter Schachzeitung.“

Berlin, 15. November 1882

Jean Dufresne

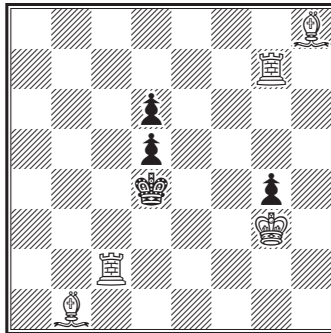


## Einleitung

Man findet in dieser Sammlung 1. Direkte Matte (zwei, drei und vierzellige Aufgaben), 2. Bedingungsaufgaben, 3. Selbstmatte, 4. Studien. — Als Ergänzung zum Inhalt der Einleitung der ersten Sammlung möge hier noch Folgendes erwähnt werden.

### I. Nebenlösung. Doppelzug.

Wenn eine Aufgabe durch zwei oder mehrere erste Züge in der angegebenen Zeitfrist gelöst werden kann, ist sie nebenlöslich. So würde dies z. B. die folgende zweizellige Loyd'sche sein, wenn auf

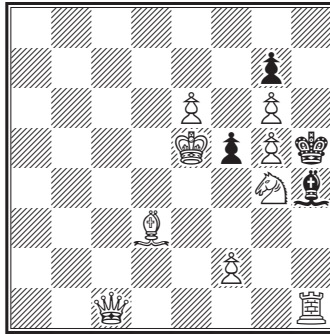


g4 der schwarze Bauer fehlte. Den alsdann würde Weiß nicht bloß durch 1. Tb2, sondern auch durch 1. Kf4 Matt mit dem zweiten Zuge erzwingen.

Im Falle die Lösung nur durch einer ersten Zug möglich ist, Weiß jedoch, nachdem Schwarz den ersten Zug beantwortet, in einer Spielart durch zwei oder mehrere Züge zum Ziel gelangen kann, so hat die Aufgabe einen Doppelzug (franz. *double coup*, engl. *dual*).



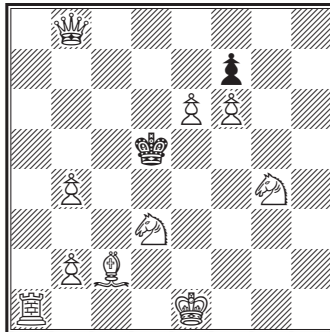
## Ph. Klett



letzt gemacht haben kann, als f5, wie man bei genauer Prüfung der Stellung leicht erkennen wird.

## III. Die Rochade mit dem ersten Zuge.

Diese ist unzulässig, weil man aus der Stellung nicht ersehen kann, ob Weiß bereits einmal der König oder Thurm gezogen hat. Die folgende Aufgabe von Loyd hat daher nach meiner Meinung keinen Anspruch auf Correctheit.



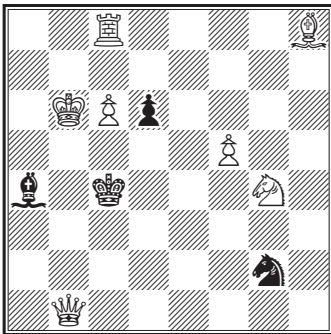
Hier spielt Weiß:

1. o-o-o, wodurch allerdings die Aufgabe in zwei Zügen gelöst wird. Mit Recht kann aber derjenige, dem sie vorgelegt wird, einwenden:

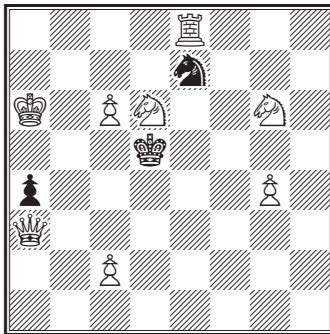
Aus der Stellung ist es nicht erkennbar, daß Weiß zu rochieren berechtigt ist. — Das Schachproblem außerhalb jedes Zusammenhangs mit der Schachpartie stellen zu wollen, halte ich für einen Mißgriff, der der Problemcomposition nicht förderlich sein kann.

# 1. Zweizügige Aufgaben

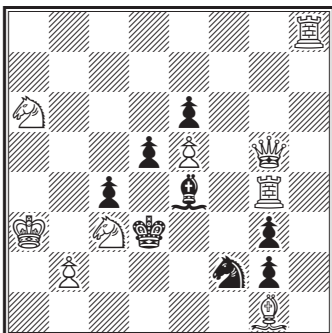
1. Aurelio Abela



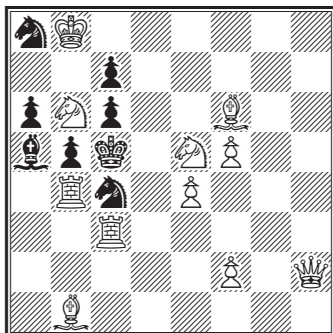
2. Aurelio Abela



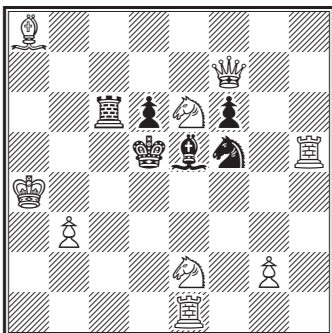
3. Aurelio Abela



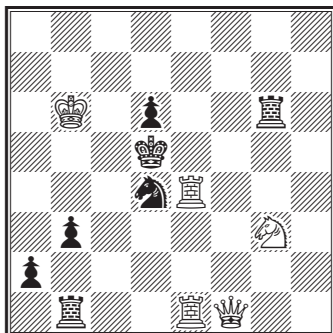
4. John Ney Babson in Newyork



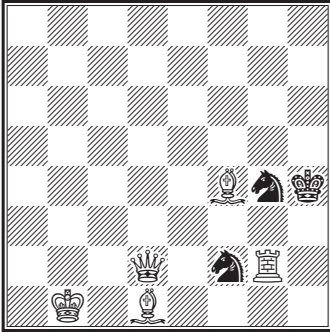
5. Conrad Bayer



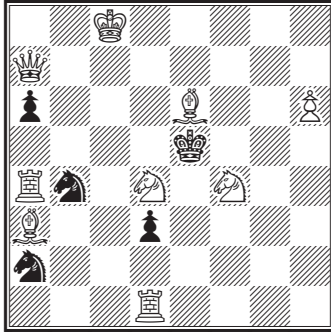
6. Conrad Bayer



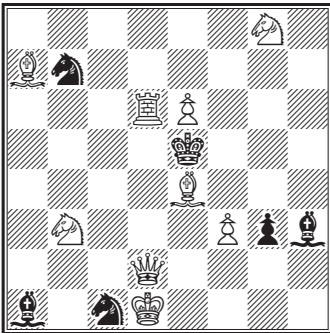
7. Conrad Bayer und J. Plachutta



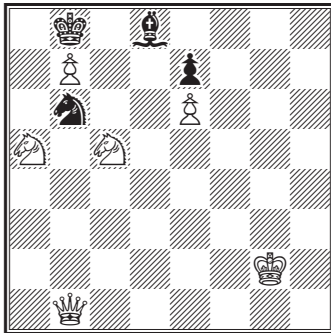
8. Miss Beechey



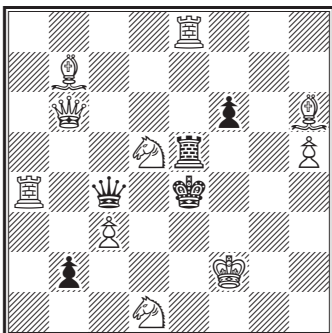
9. Johann Berger



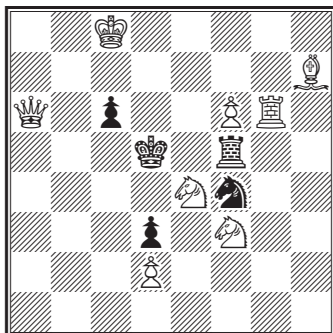
10. Oscar Blumenthal



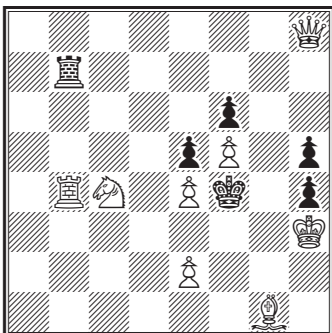
11. Harry Boardman



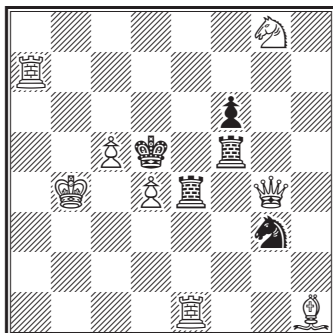
12. Robert Braune



13. Robert Braune

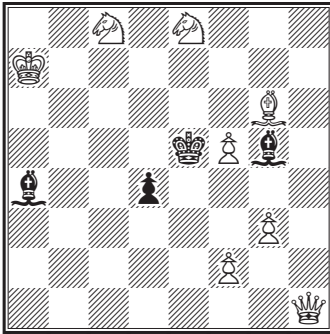


14. Robert Braune

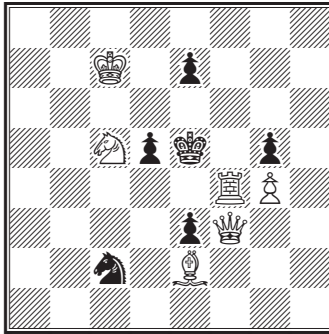




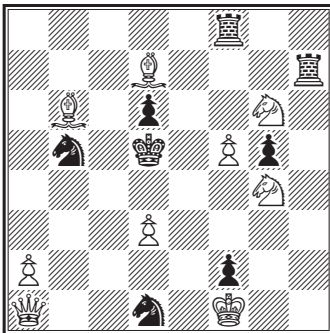
15. Budde in Christiania



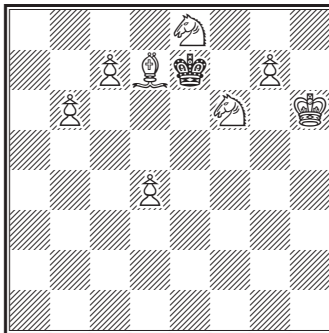
16. G. E. Carpenter



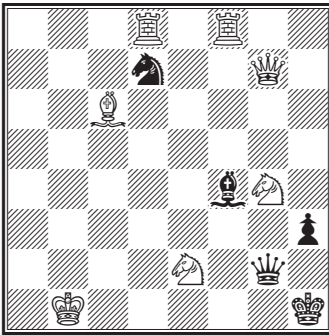
17. G. N. Cheney



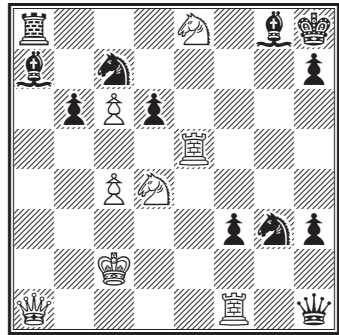
18. G. N. Cheney



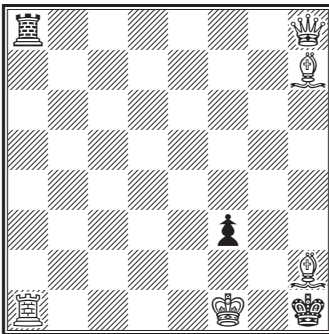
19. G. Chocholous



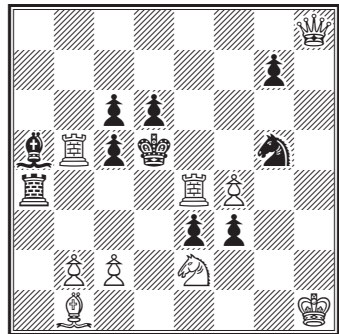
20. G. Chocholous



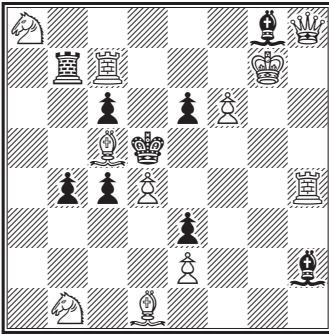
21. G. Chocholous



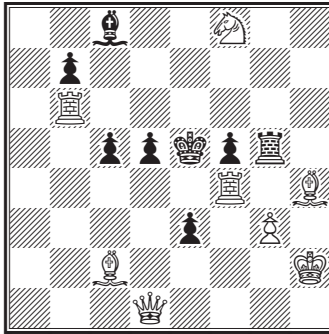
22. F. C. Collins in London



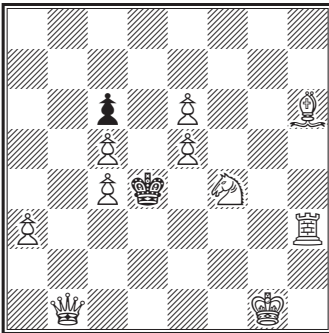
23. F. C. Collins



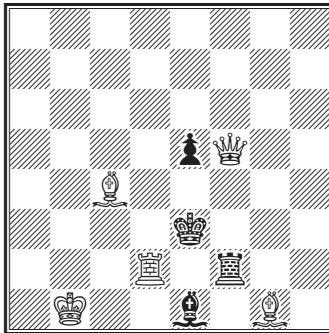
24. C. H. Coster



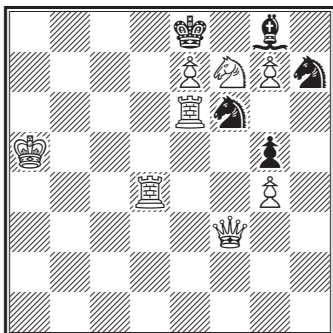
25. C. H. Coster



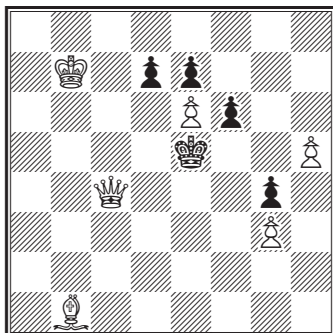
26. E. B. Cook



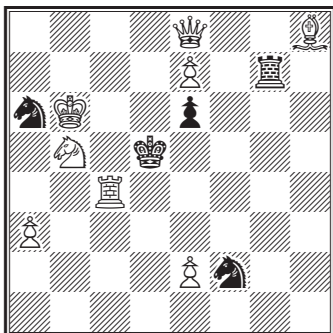
27. E. B. Cook



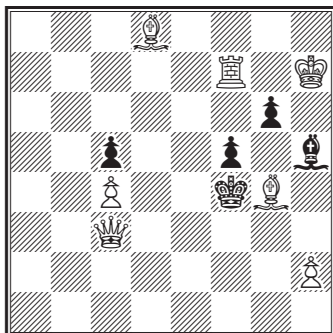
28. J. Crake



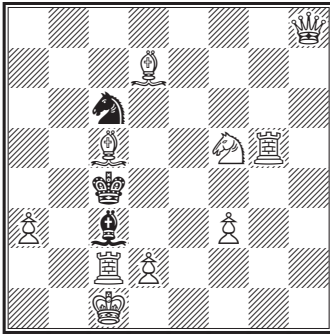
29. J. Crake



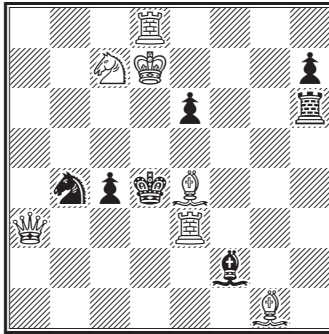
30. J. Crake



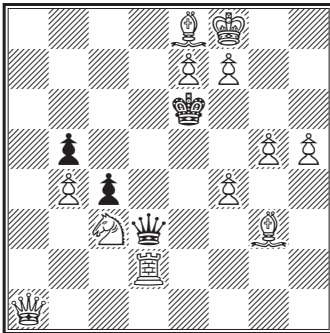
31. C. E. Dennis



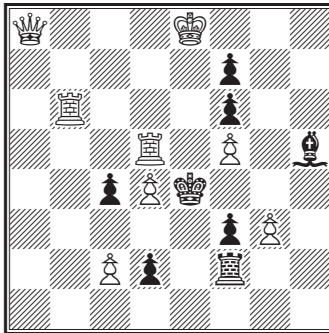
32. C. E. Dennis



33. Fr. Dubbe in Rostock

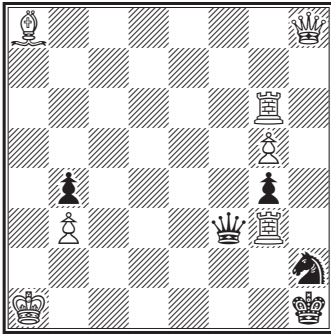


34. Fr. Dubbe

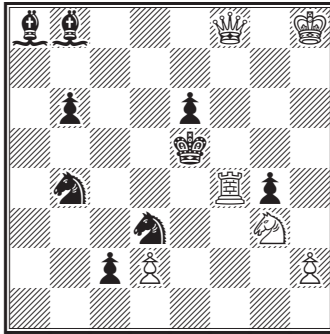




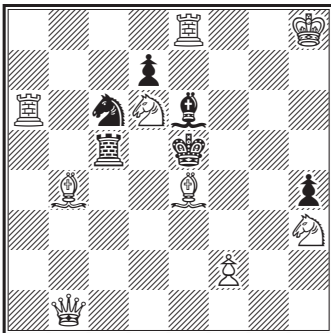
39. J. G. Finch



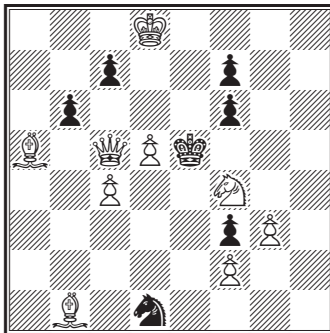
40. J. B. Fisher



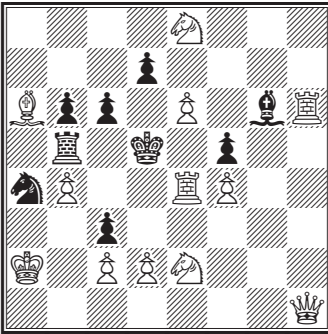
41. E. N. Frankenstein



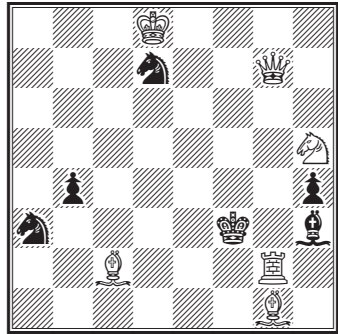
42. Fuß und Peetz in Clausthal



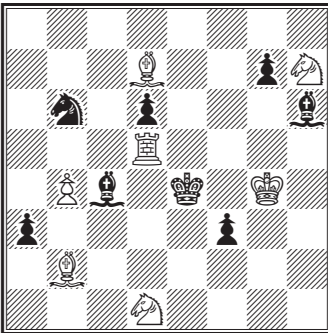
43. Fritz von Geijerstam



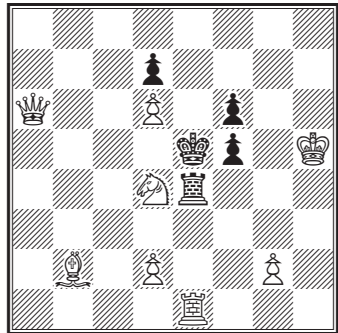
44. Fritz von Geijerstam



45. C. A. Gilberg in Newyork

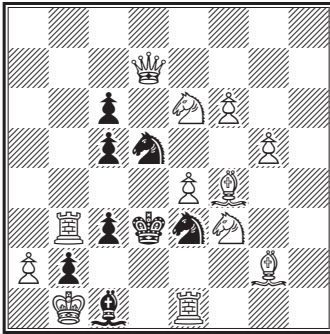


46. S. Gold in Wien

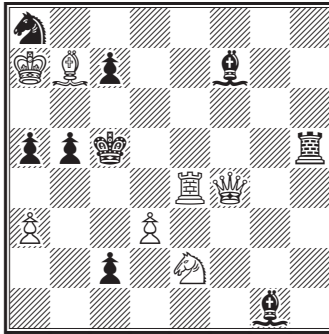




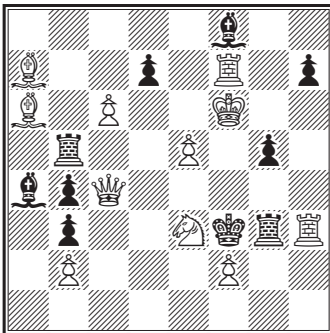
47. F. Healey



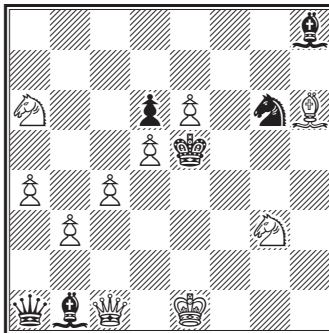
48. Hertzsprung in Kopenhagen



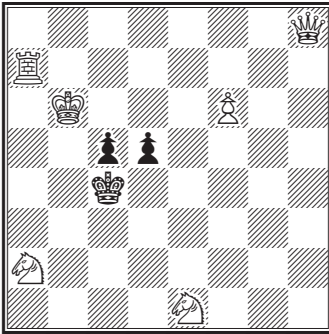
49. G. Hume



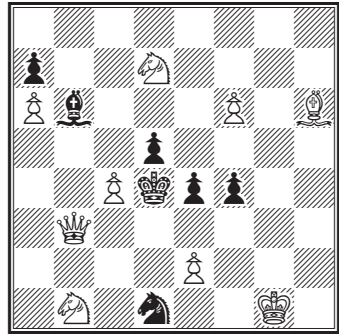
50. J. Jespersen in Dänemark



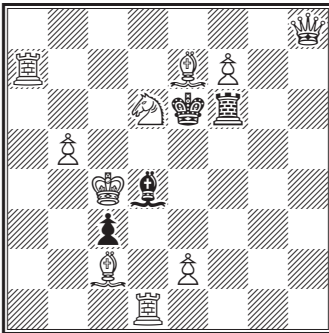
51. Albert Kauders in Wien



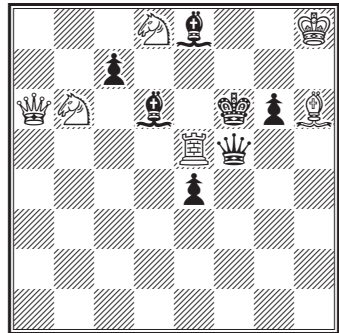
52. F. J. Kellner in Wien



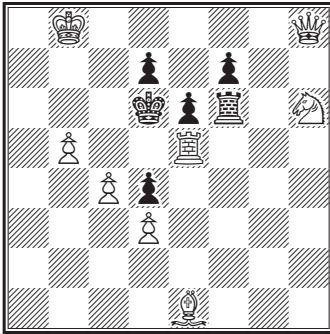
53. Kidson



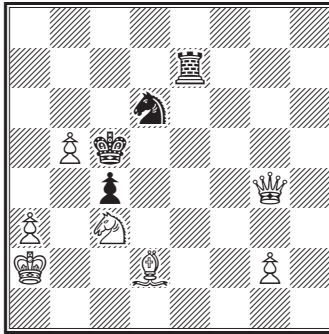
54. Carl Kondelik in Paris



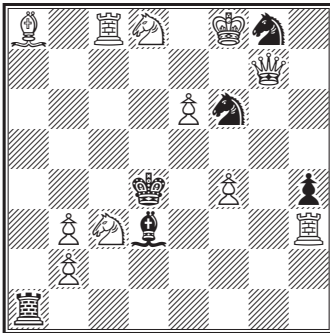
55. Carl Kondelik



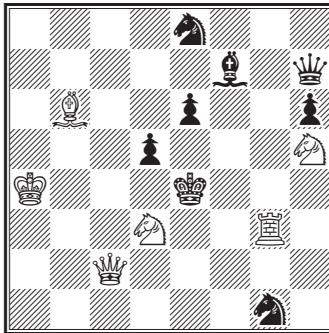
56. M. Kürschner in Nürnberg



57. M. Lansquenet

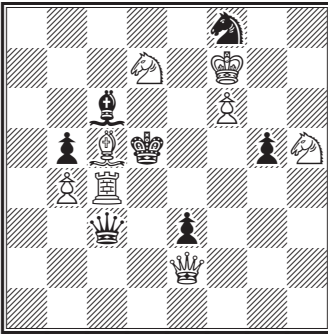


58. B. G. Laws

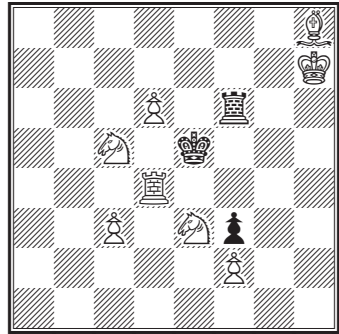


[\*]

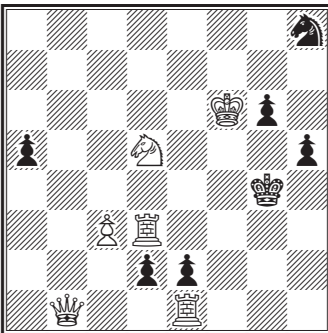
59. Hermann Lehner in Wien



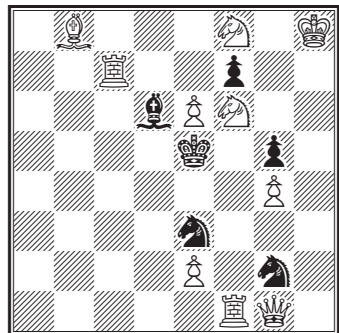
60. Hermann Lehner



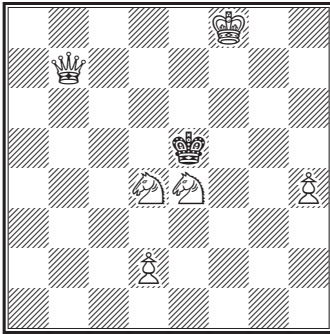
61. Hermann Lehner



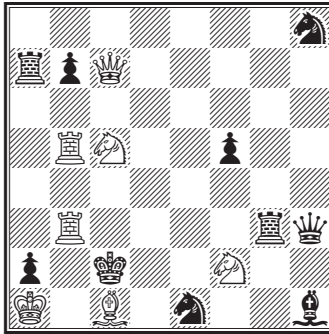
62. Rudolph L'Hermet in Magdeburg



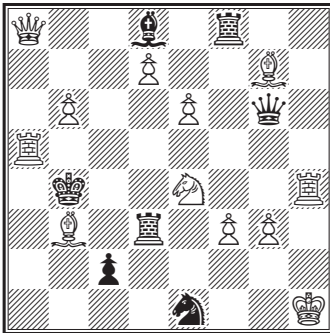
63. G. Liberali



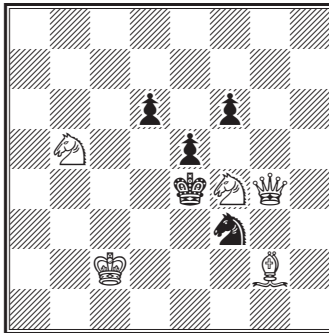
64. S. Loyd



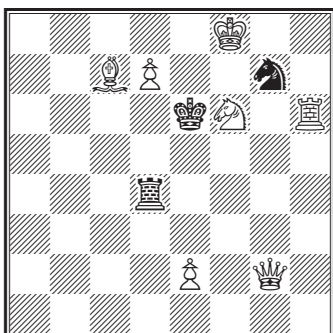
65. S. Loyd



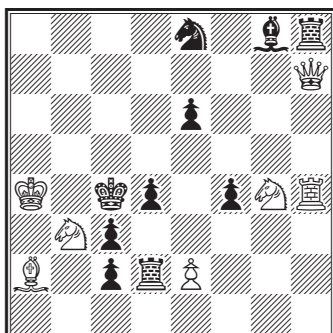
66. S. Loyd



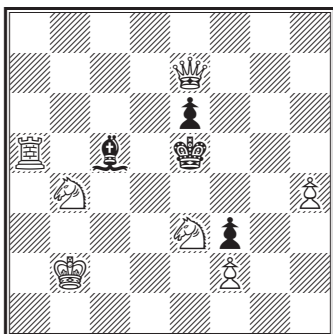
67. S. Loyd



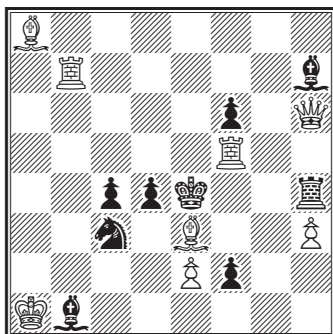
68. S. Loyd



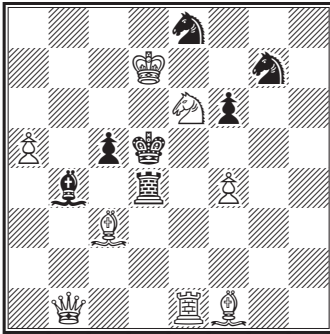
69. S. Loyd



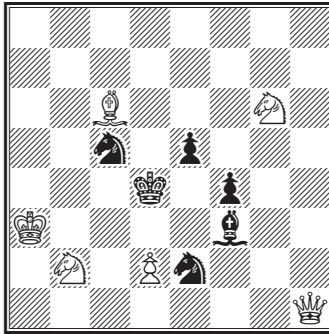
70. F. W. Martindale



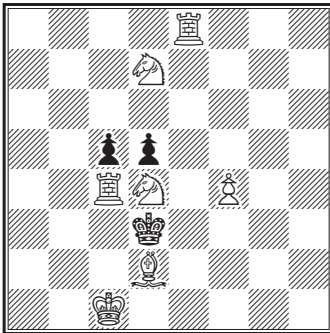
71. Melissinos in Patras



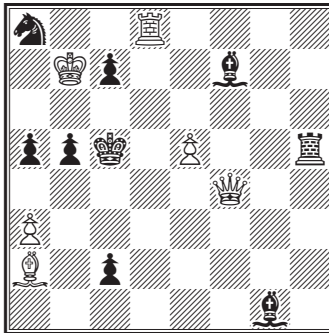
72. Heinrich Meyer



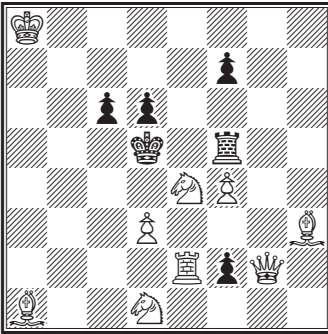
73. Heinrich Meyer



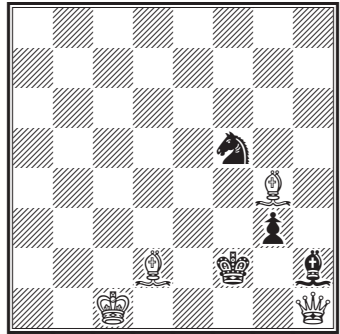
74. Heinrich Meyer



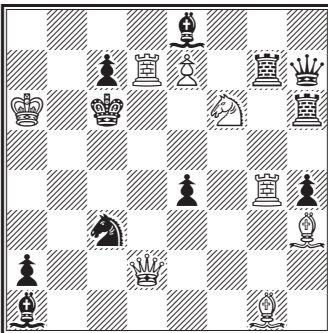
75. Heinrich Meyer



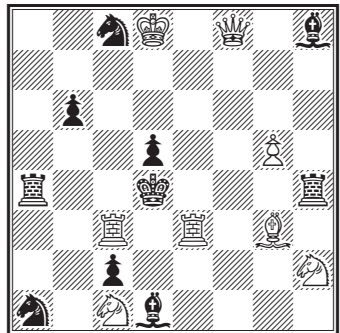
76. C. Moore



77. B. M. Neill

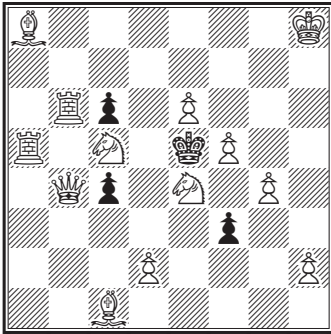


78. J. G. Nix

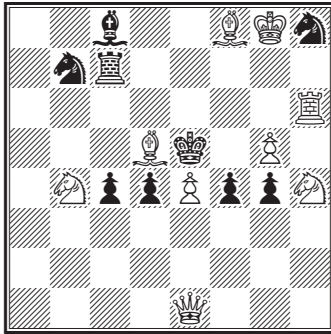




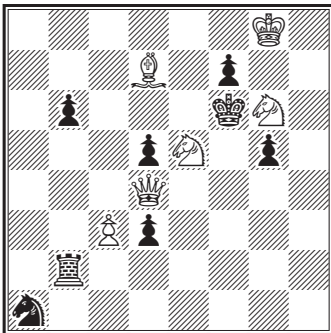
79. J. G. Nix



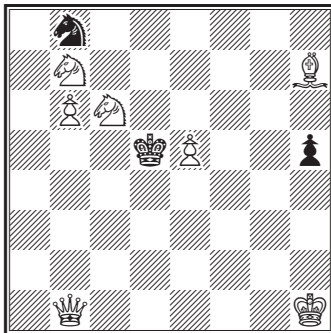
80. J. G. Nix



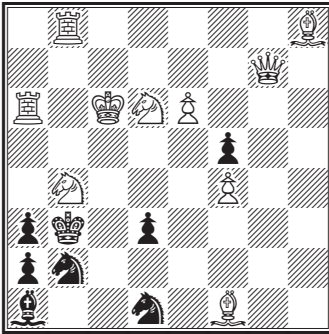
81. L. Noack in Breslau



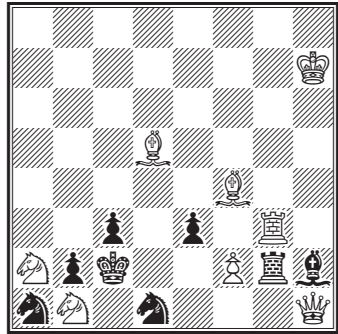
82. L. Noack



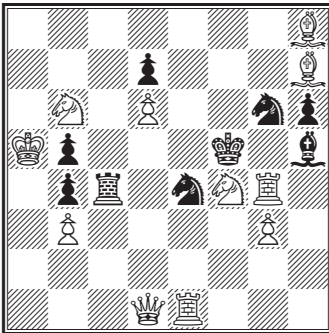
83. Pradignat



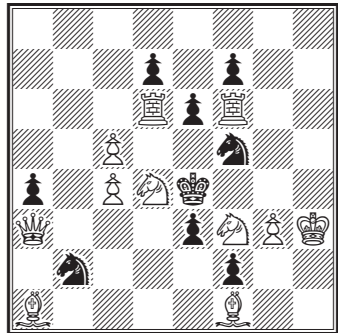
84. Pradignat



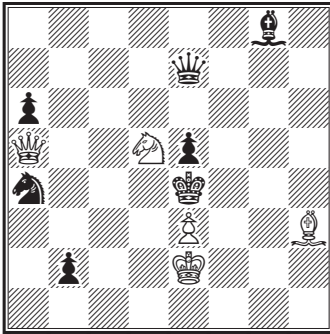
85. Pradignat



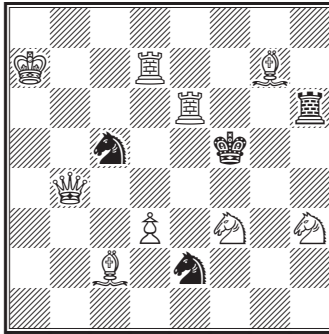
86. Pradignat



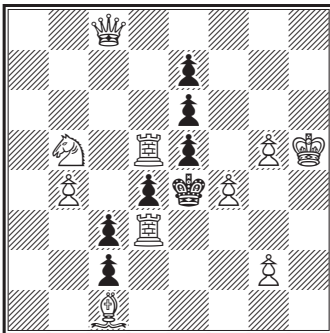
87. G. A. Reed



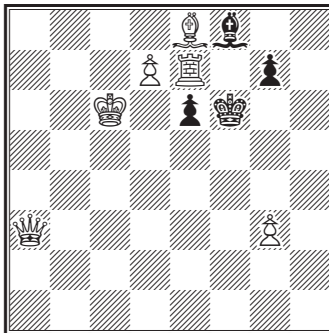
88. Robert Sahlberg in Stockholm



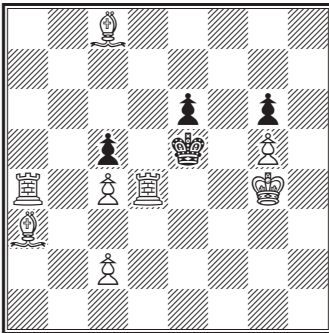
89. Nicolo Sardotsch



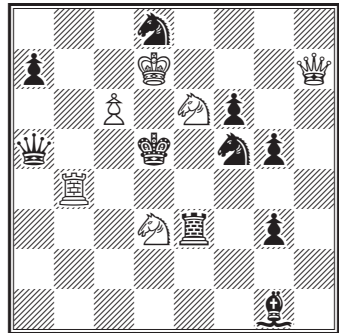
90. Nicolo Sardotsch



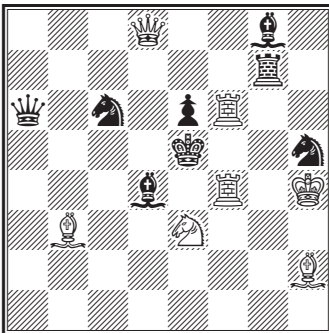
91. Nicolo Sardotsch



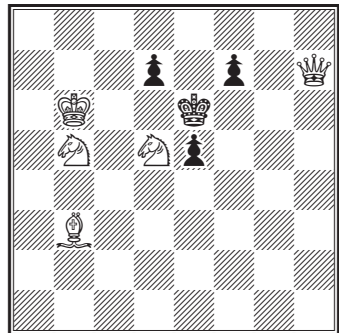
92. Frau Sophie Schett



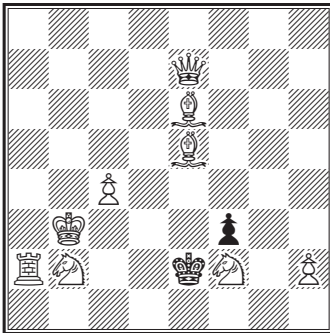
93. F. A. Schmitt



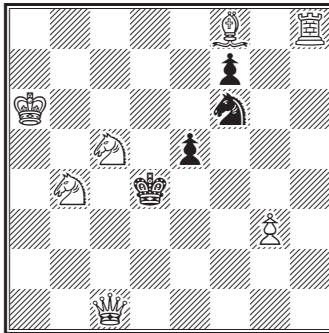
94. W. A. Shinkman



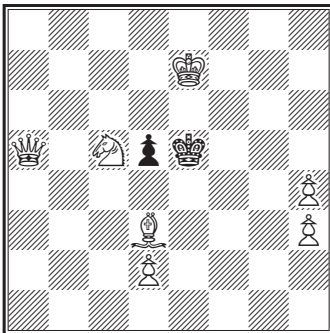
95. W. A. Shinkman



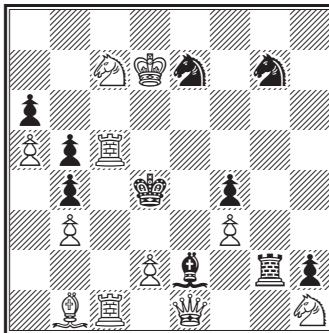
96. W. A. Shinkman



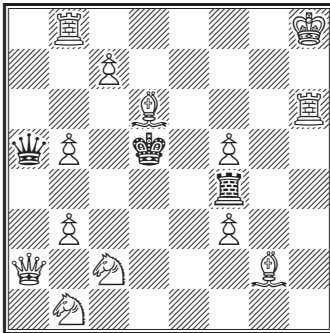
97. J. P. Taylor



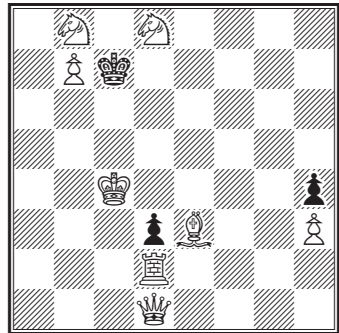
98. C. G. B. Valle



99. J. C. Wainwright

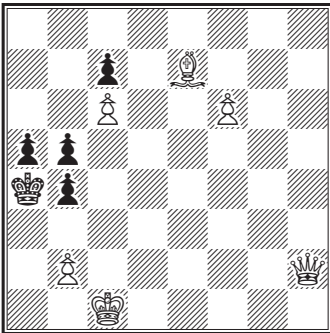


100. S. Wash

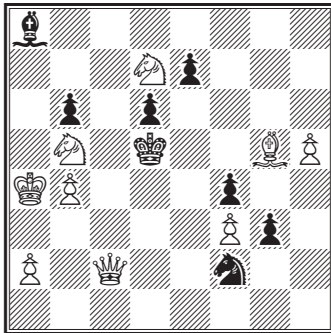


## 2. Drezügige Aufgaben

1. Aurelio Abela



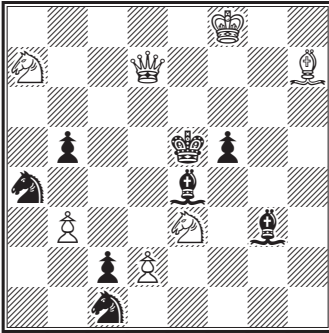
2. Aurelio Abela



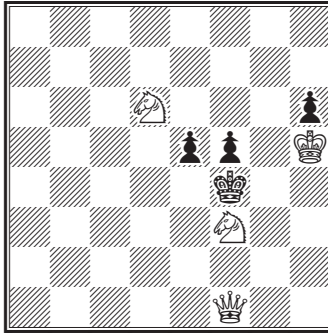




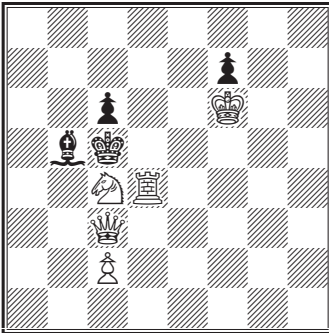
7. Conrad Bayer



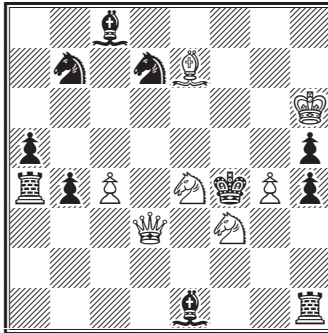
8. Conrad Bayer



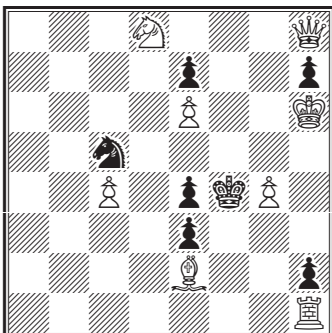
9. Conrad Bayer



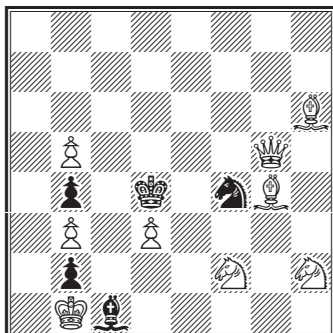
10. Johann Berger



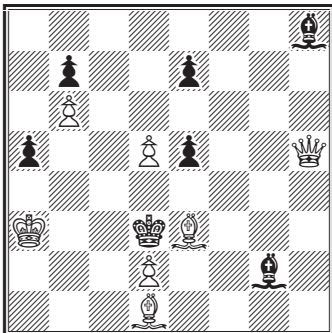
11. Johann Berger



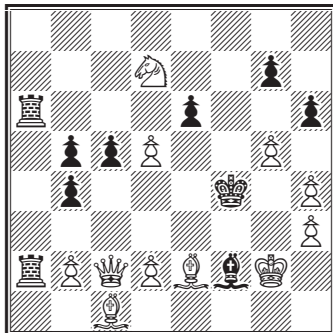
12. Johann Berger



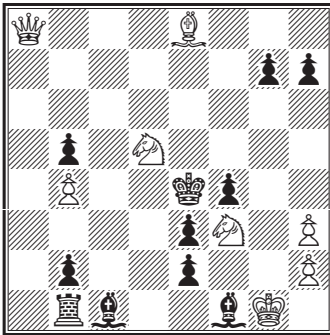
13. Johann Berger



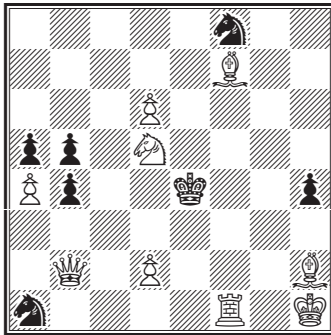
14. Johann Berger



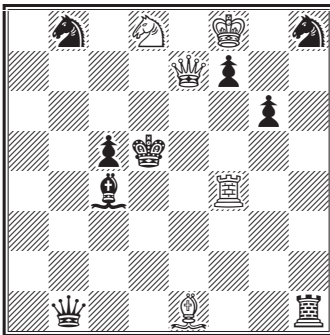
15. Johann Berger



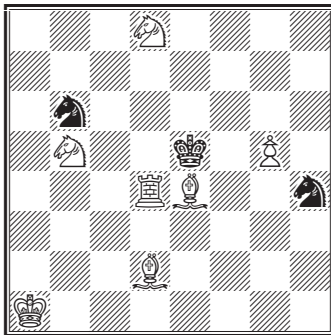
16. Johann Berger



17. Richard Beuthner

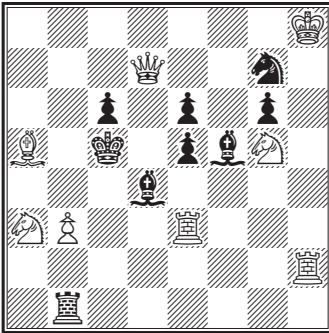


18. Oscar Blumenthal

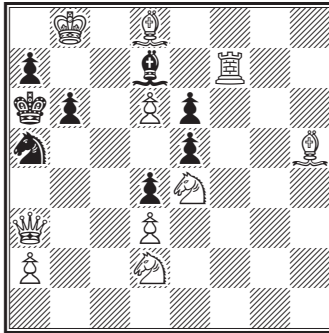




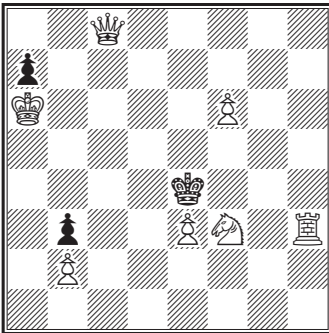
23. J. G. Campbell



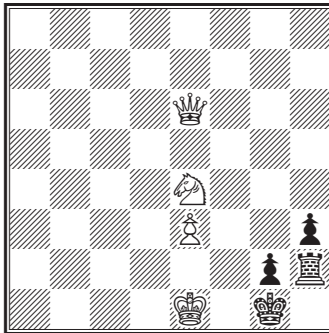
24. J. G. Campbell



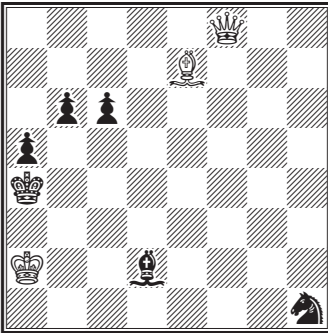
25. G. E. Carpenter



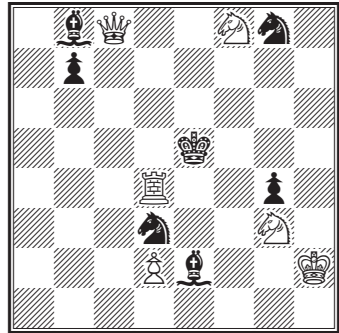
26. Chocholous und J. Dobruski



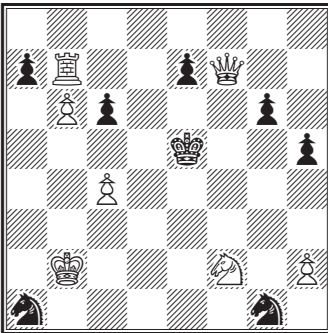
27. G. Chocholous und S. Gold



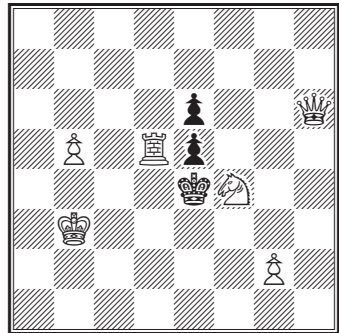
28. G. Chocholous



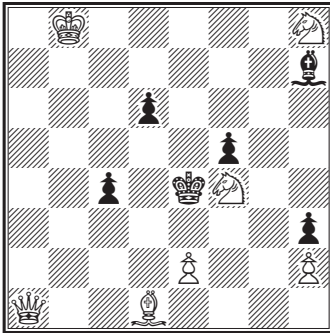
29. G. Chocholous



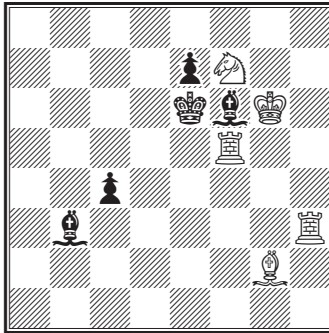
30. G. Chocholous



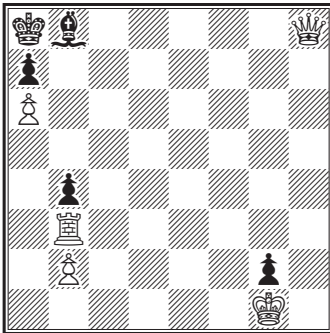
31. G. Chocholous



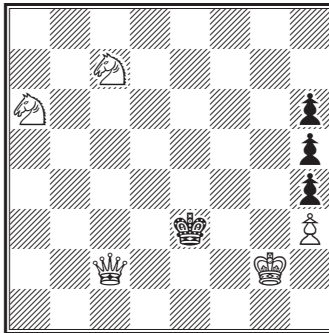
32. E. Crespi



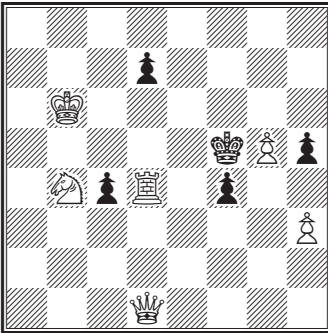
33. P. Daley



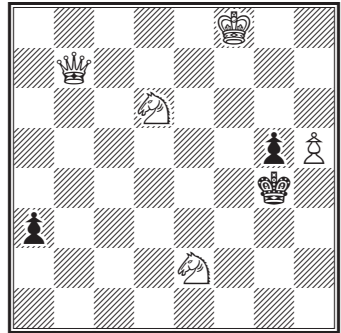
34. Johann Dobrusky



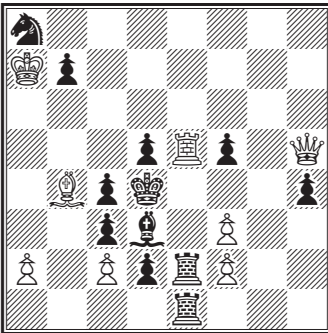
35. Johann Dobrusky



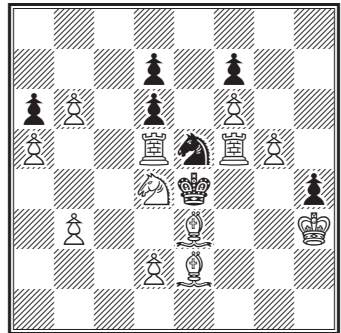
36. Fr. Dubbe in Rostock



37. Fr. Dubbe



38. Fr. Dubbe

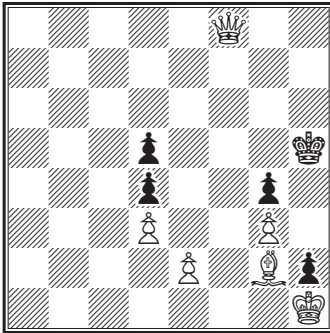


2. Pr. Berliner Problemturnier

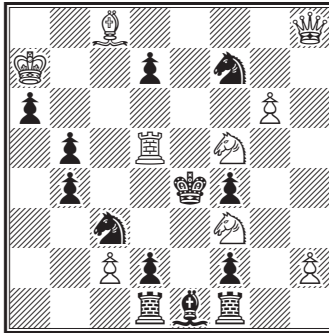
1881



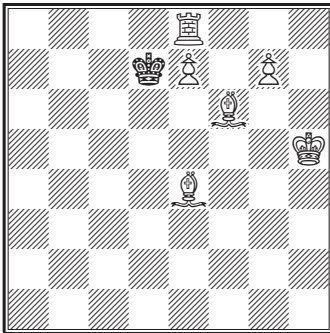
39. Fr. Dubbe



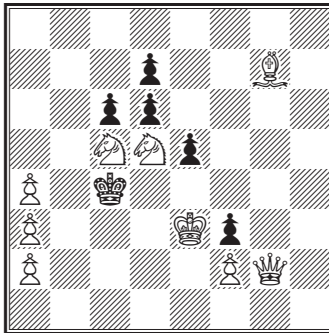
40. Fr. Dubbe



41. Moritz Ehrenstein



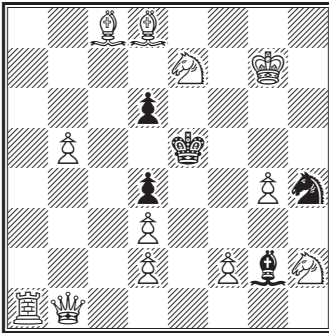
42. Moritz Ehrenstein



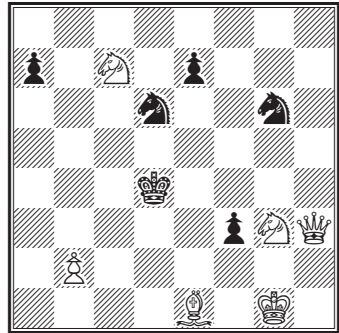
2. Pr. *Brentano's Chess Monthly*

1882

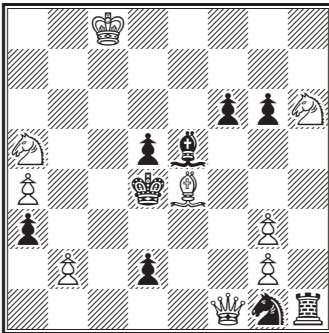
43. Moritz Ehrenstein



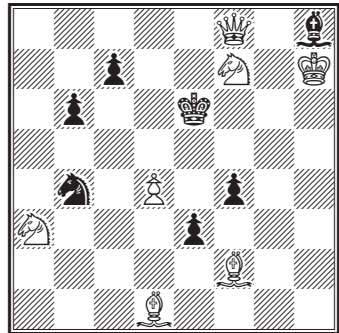
44. Moritz Ehrenstein



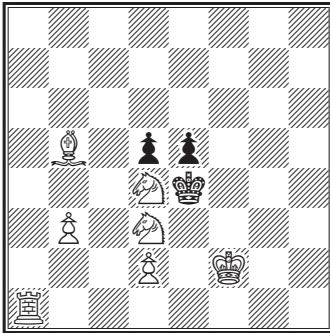
45. Einsiedler in Tyrnau



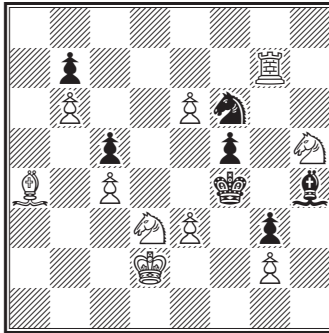
46. Einsiedler in Tyrnau



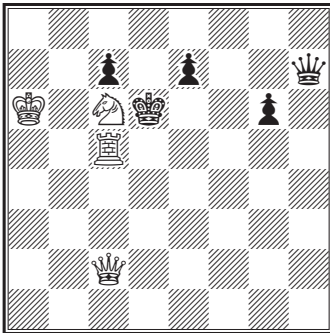
47. Einsiedler in Tyrnau



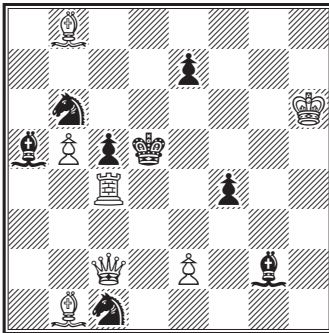
48. Einsiedler in Tyrnau



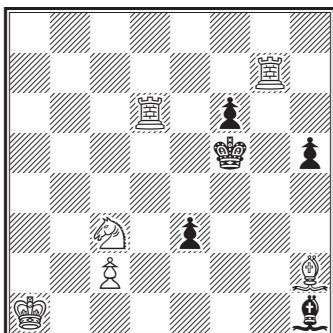
49. Hugo Faehndrich



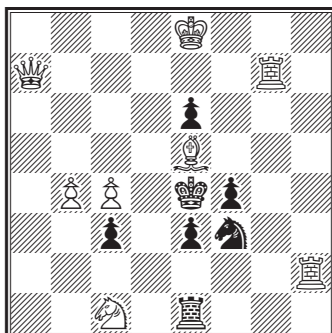
50. Fritz von Geyerstam in Upsala



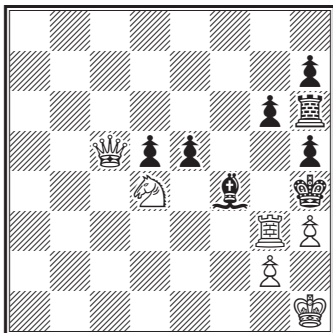
51. Fritz v. Geyerstam



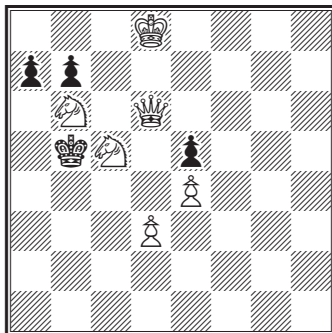
52. S. Gold



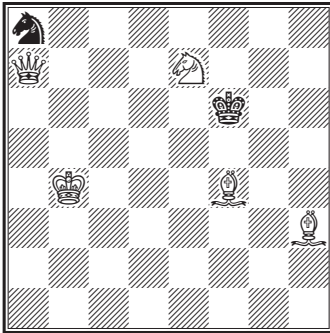
53. Hermann v. Gottschall



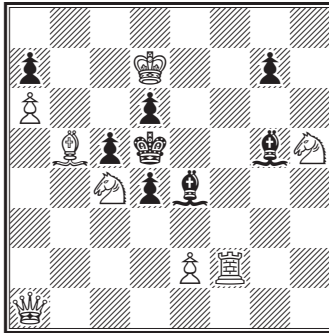
54. Hermann v. Gottschall



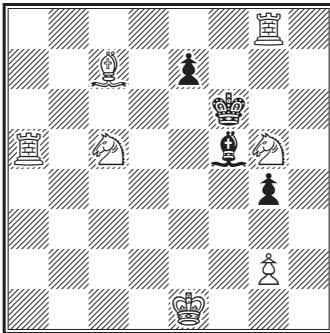
55. Hermann v. Gottschall



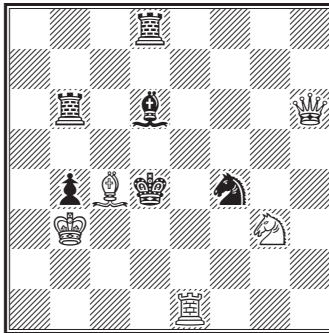
56. Healey



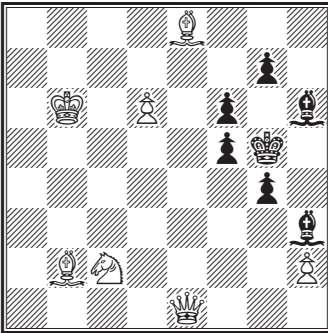
57. Healey



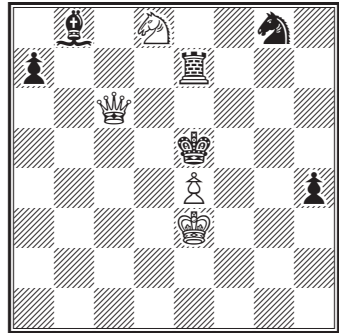
58. Healey



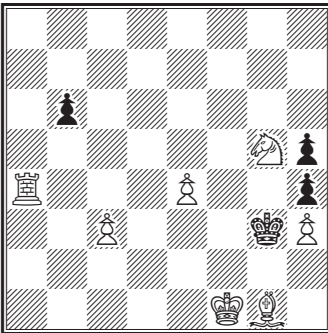
59. Joseph Heral



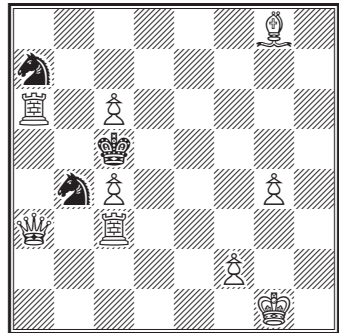
60. Hermann in Christiania



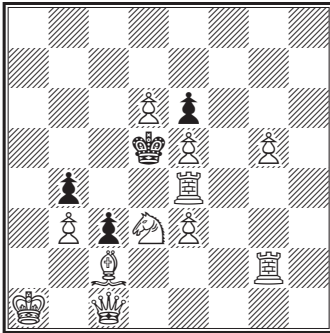
61. S. Herzsprung in Kopenhagen



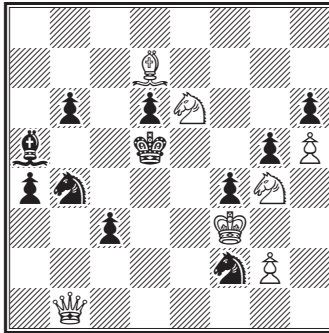
62. Albert Kauders



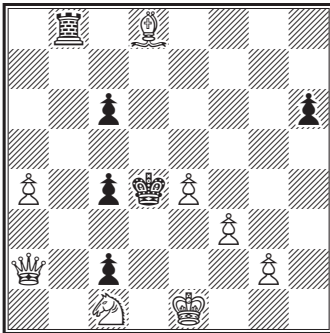
63. A. Kauders



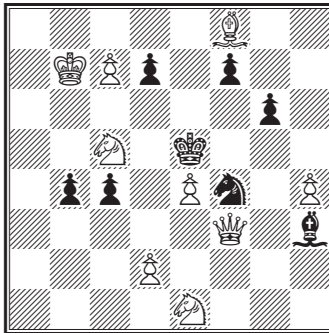
64. A. Kauders



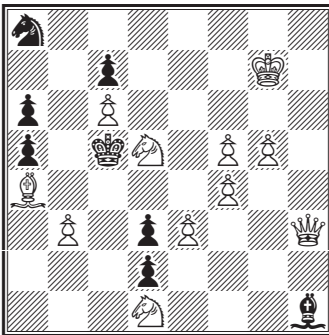
65. Fritz Kohlhasse in Cassel



66. Carl Kondelik in Prag

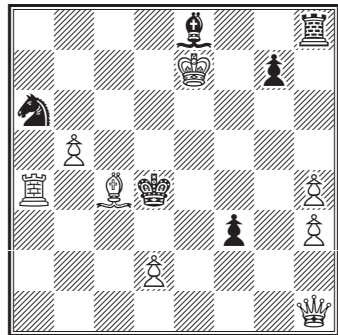


67. Carl Kondelik

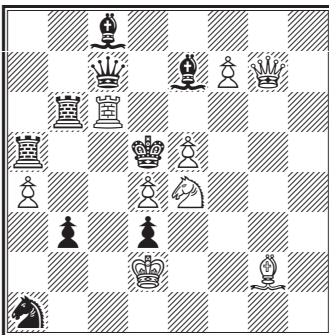


[+]

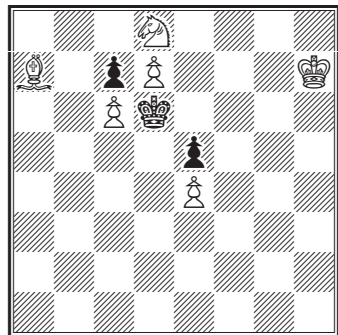
68. Carl Kondelik



69. Max Kürschner in Nürnberg

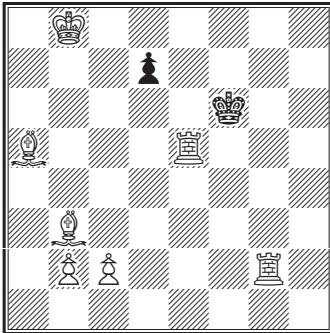


70. Max Kürschner

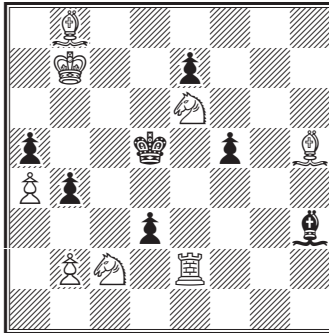




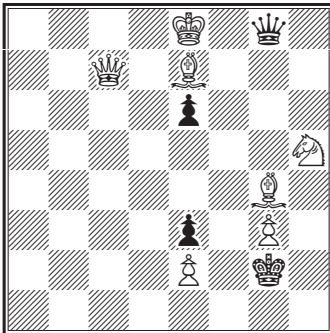
71. Max Kürschner



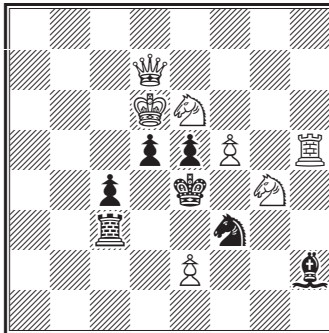
72. Max Kürschner



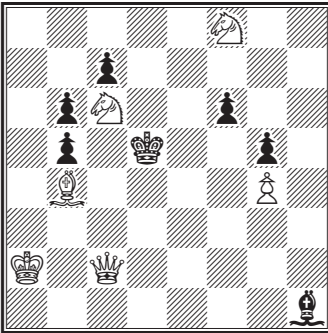
73. H. Landesmann in Wien



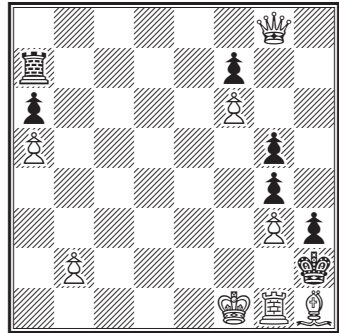
74. A. Lansquenet



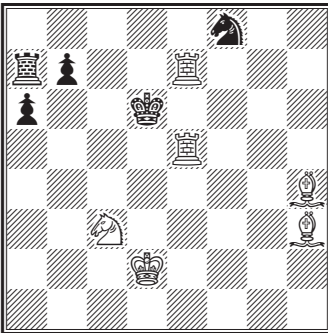
75. B. G. Laws



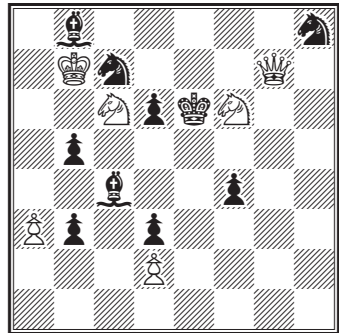
76. B. G. Laws



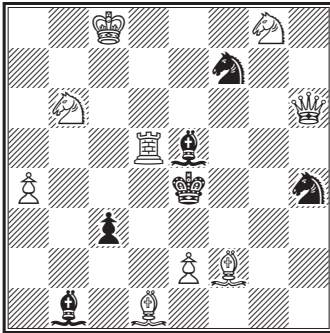
77. Hermann Lehner



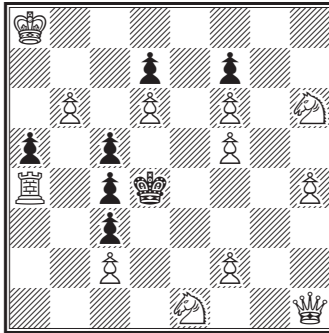
78. Hermann Lehner



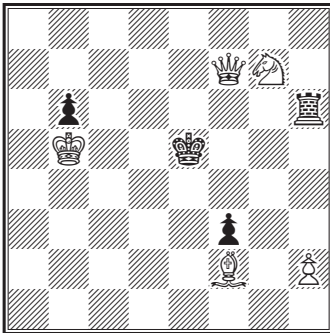
79. Leprettel in Marseille



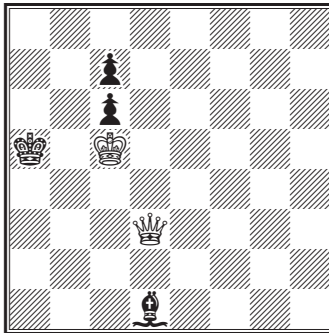
80. R. L'hermet in Magdeburg



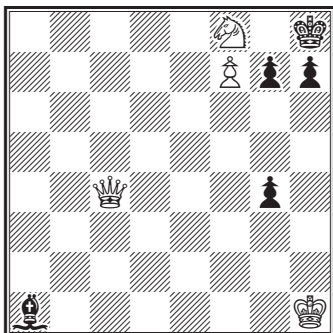
81. W. Lintz in Darmstadt



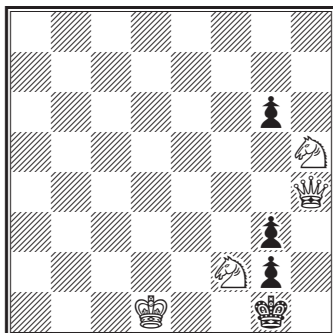
82. S. Loyd



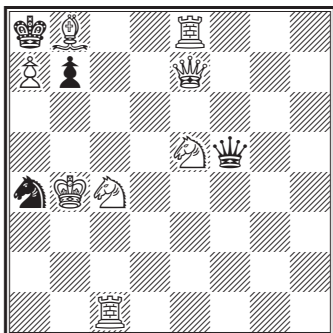
83. S. Loyd



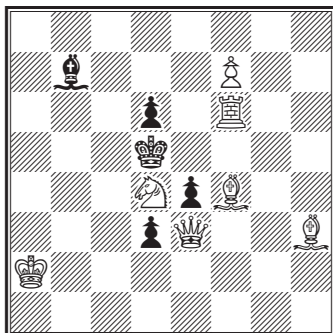
84. S. Loyd



85. S. Loyd

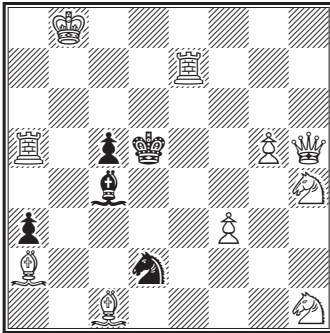


86. S. Loyd

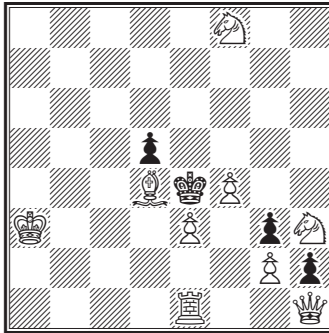


[\*]

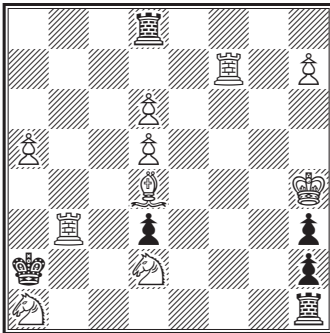
87. Arthur Mackenzie



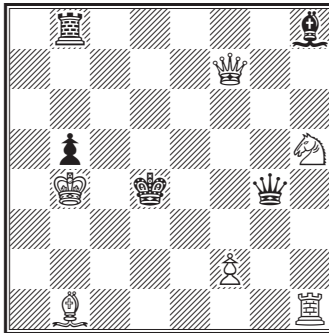
88. Heinrich Meyer



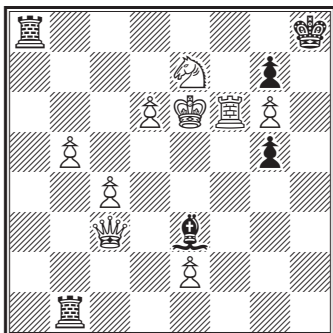
89. Heinrich Meyer



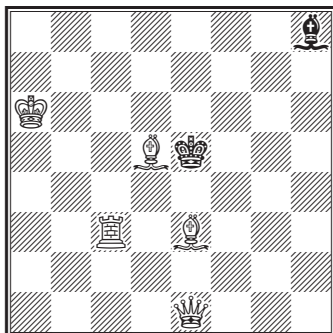
90. Johann Minckwitz



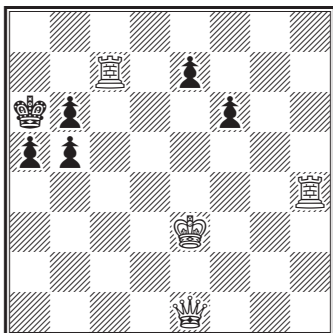
91. F. Möller in Ahlten



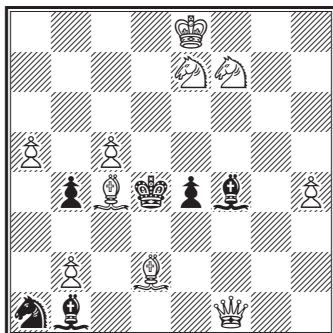
92. C. Moore



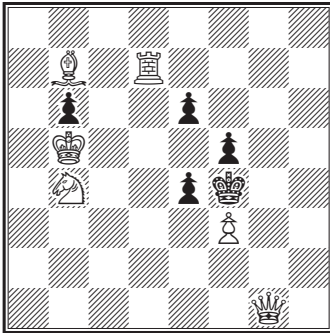
93. C. Moore



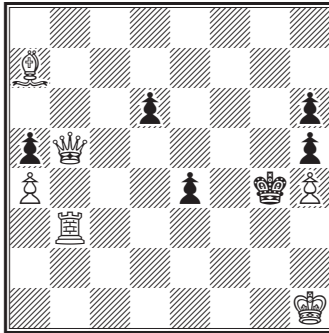
94. M. Nielsen in Kopenhagen



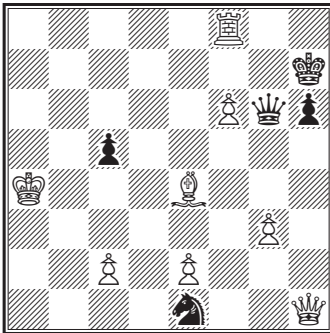
95. J. G. Nix



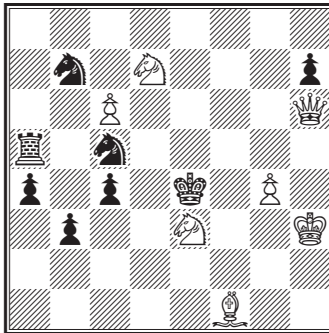
96. J. G. Nix



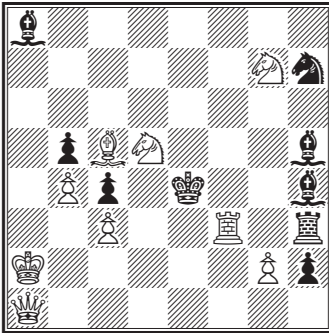
97. L. Noack



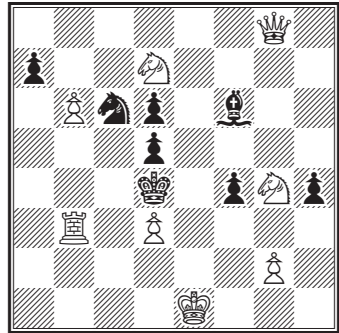
98. L. Noack



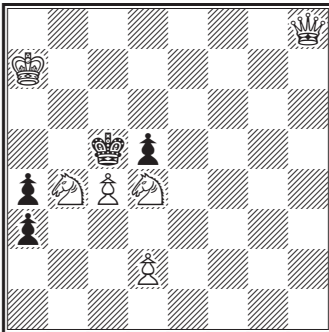
99. Johann Obermann in Leipzig



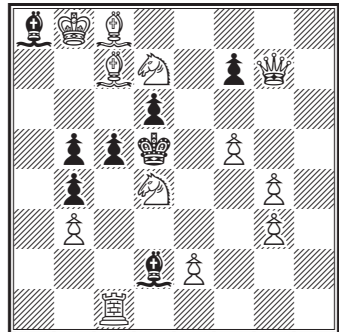
100. J. Obermann



101. G. Orsini in Livorno

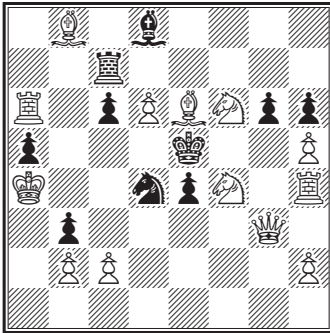


102. Pradignat

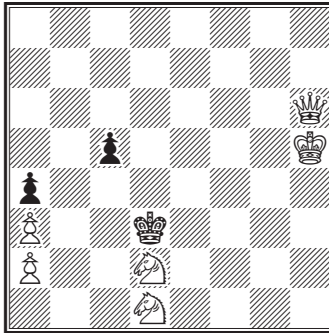




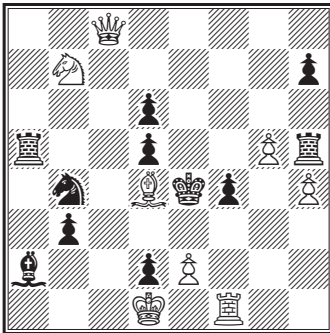
103. Robert Sahlberg



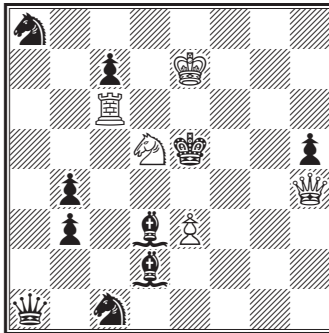
104. Nicolo Sardotsch in Triest



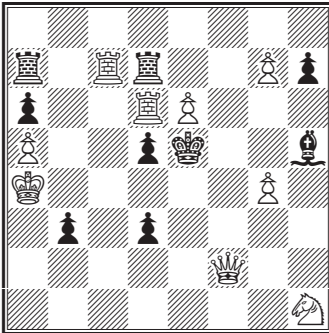
105. Nicolo Sardotsch



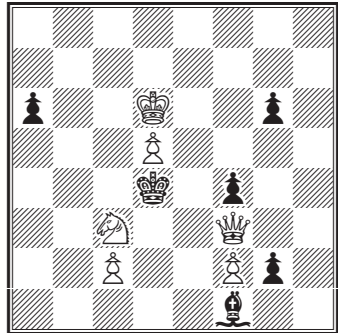
106. Nicolo Sardotsch



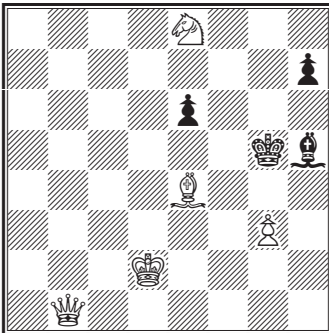
107. Nicolò Sardotsch



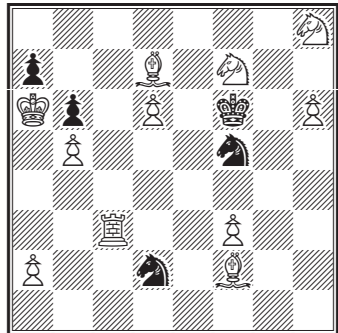
108. Frau Sophie Schett



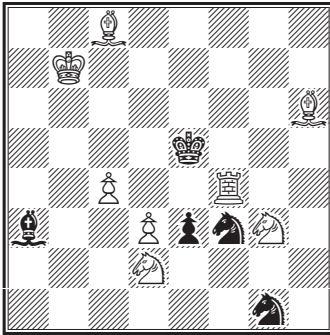
109. Fr. Schröder



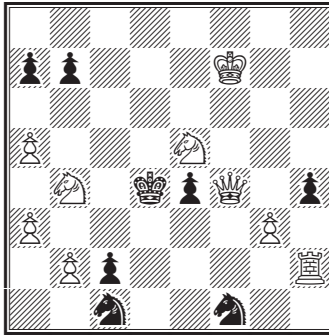
110. Fr. Schröder



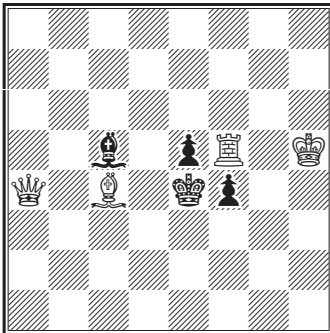
111. Fr. Schrüfer



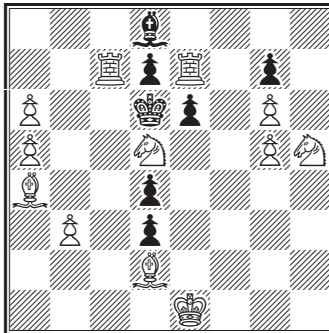
112. Fr. Schrüfer



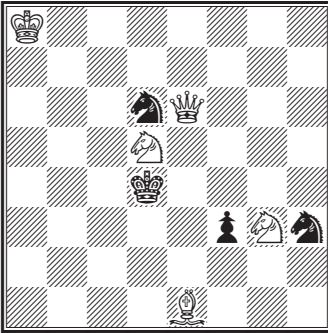
113. Fr. Schrüfer



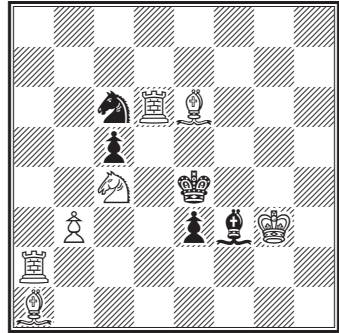
114. Fr. Schrüfer



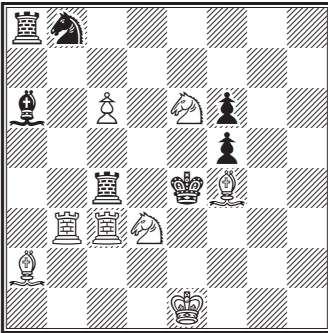
115. Fr. Schrüfer



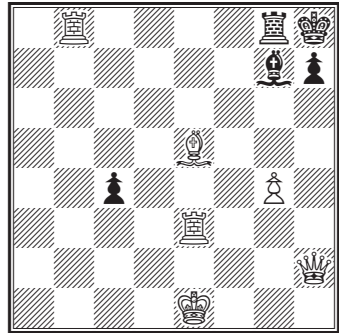
116. Fr. Schrüfer



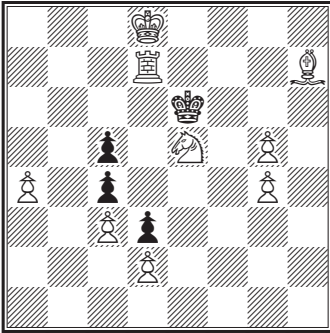
117. Fr. Schrüfer



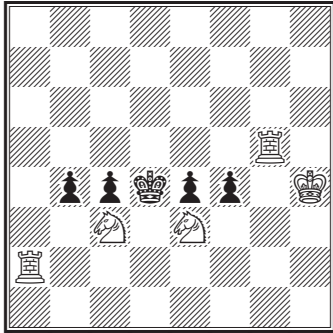
118. Fr. Schrüfer



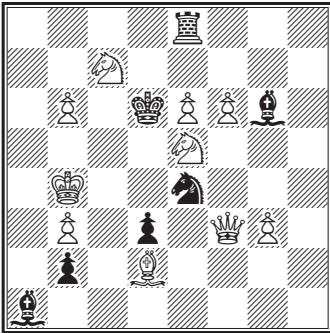
119. Fr. Schrüfer



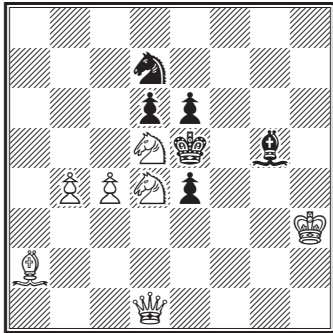
120. Fr. Schrüfer



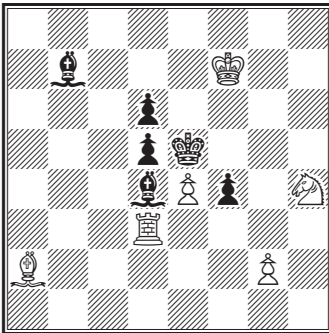
121. Fr. Schrüfer



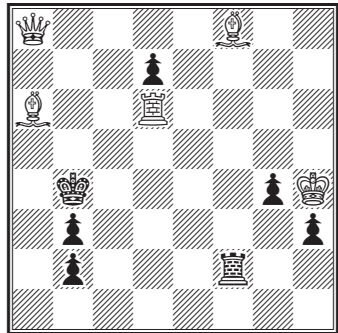
122. Fr. Schrüfer



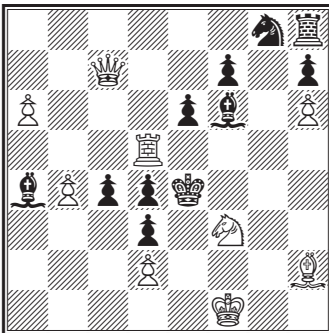
123. Fr. Schrüfer



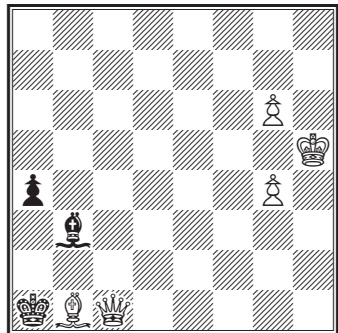
124. Constantin Schwede



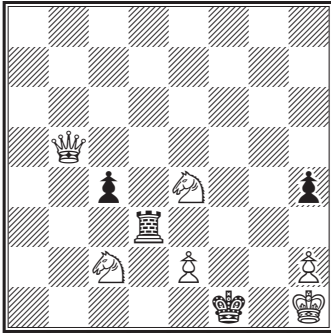
125. Constantin Schwede



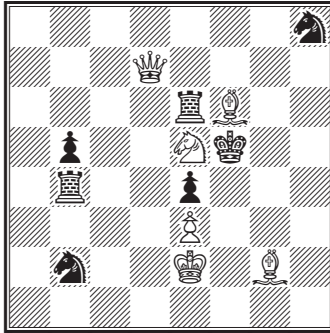
126. W. A. Shinkman



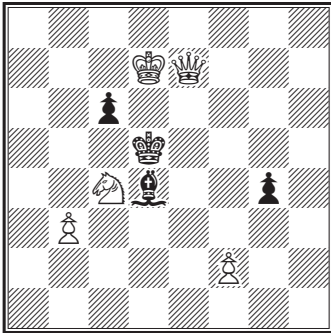
127. W. A. Shinkman



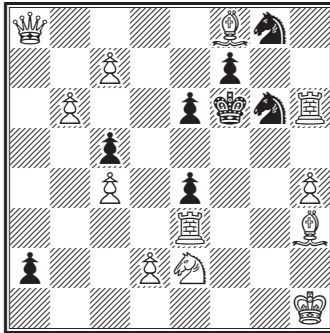
128. C. G. B. Valle



129. C. G. B. Valle

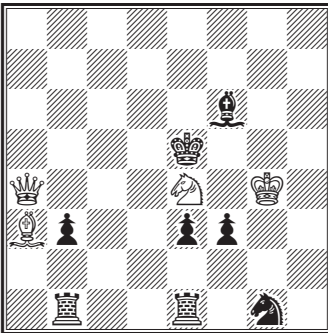


130. Wainwright

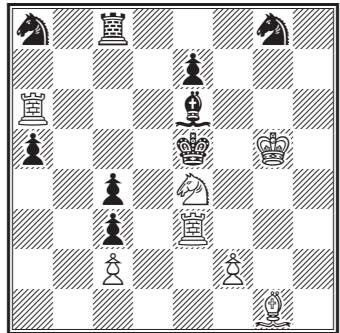


### 3. Vierzügige Aufgaben

1. Conrad Bayer

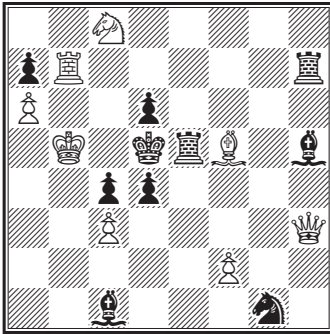


2. Conrad Bayer

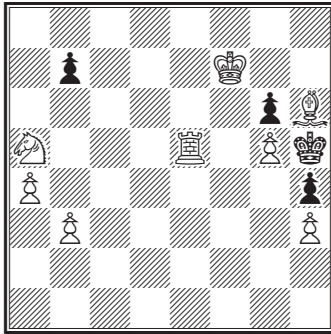




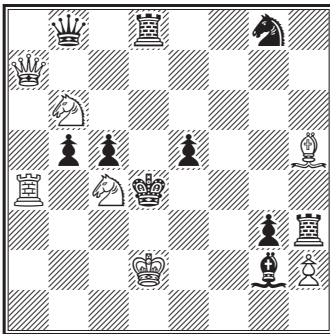
3. Conrad Bayer



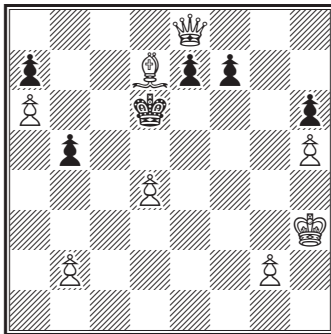
4. Conrad Bayer



5. Conrad Bayer

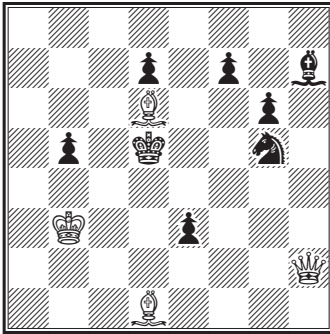


6. Conrad Bayer

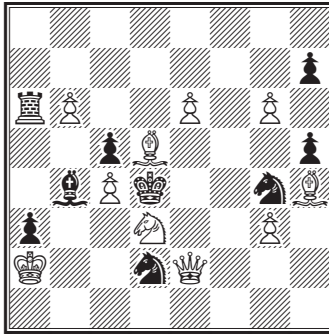




11. Johann Berger

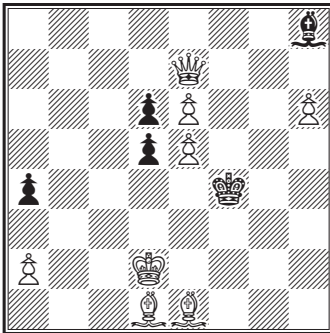


12. Johann Berger

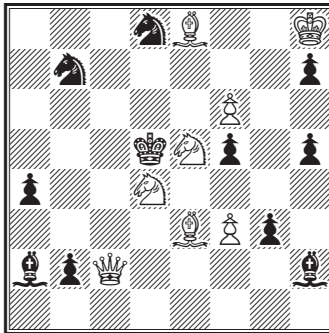


[\*]

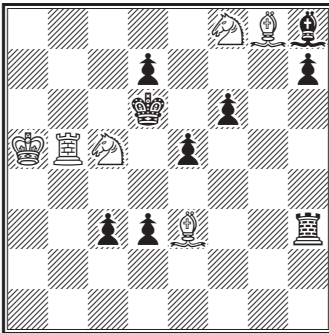
13. Johann Berger



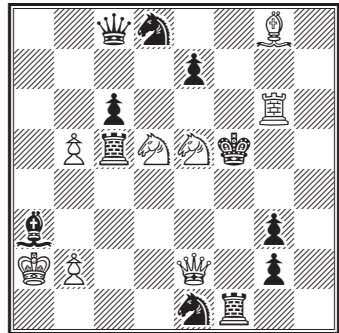
14. Johann Berger



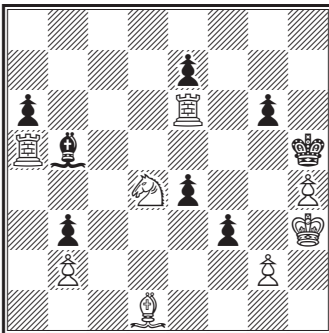
15. Robert Braune



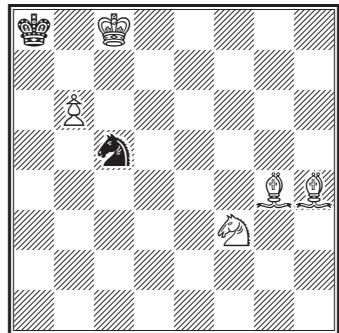
16. Robert Braune



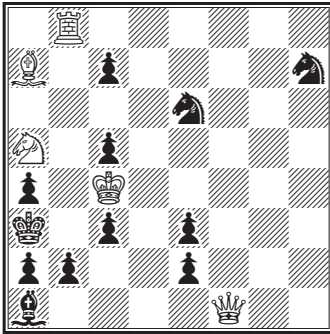
17. G. N. Cheney



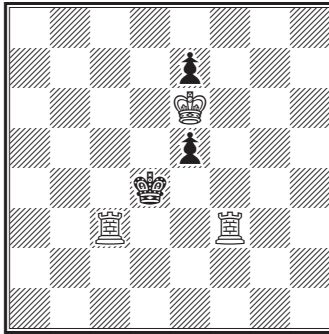
18. G. N. Cheney



19. G. N. Cheney

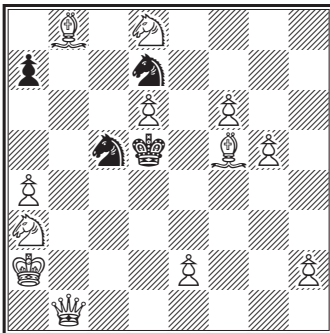


20. E. B. Cook

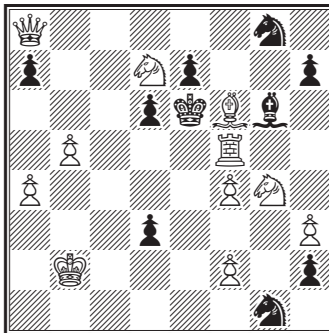


[\*]

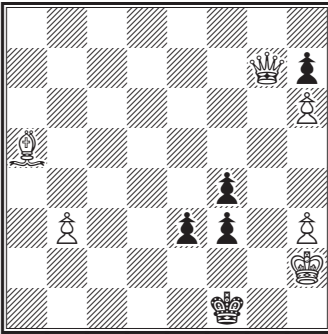
21. Johann Dobrusky



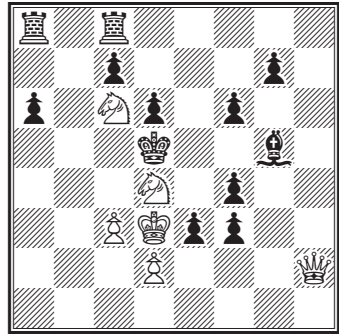
22. Fr. Dubbe



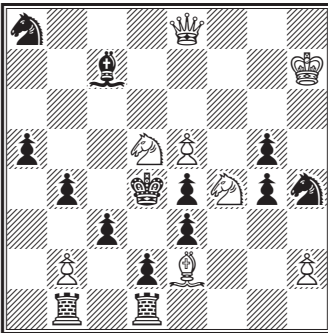
23. Fr. Dubbe



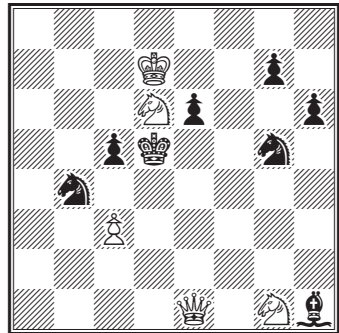
24. Moritz Ehrenstein



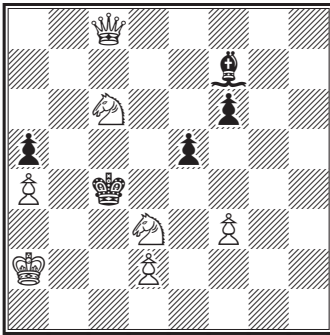
25. Moritz Ehrenstein



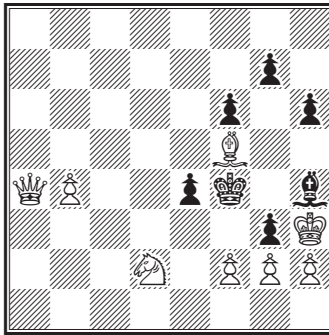
26. Frank Healey



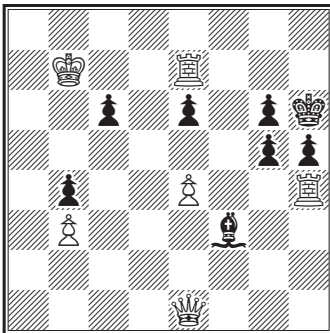
27. Herlin



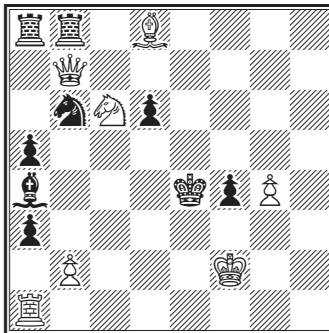
28. Albert Kauders



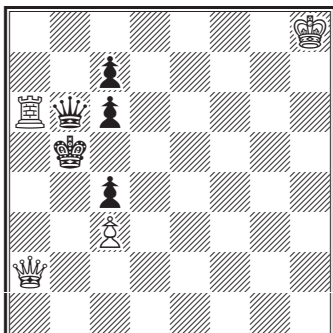
29. Ph. Klett



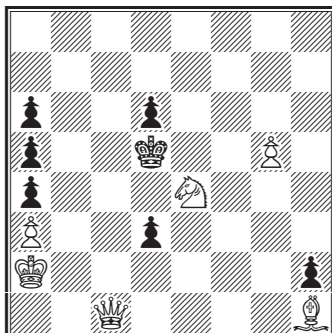
30. Max Kürschner in Nürnberg



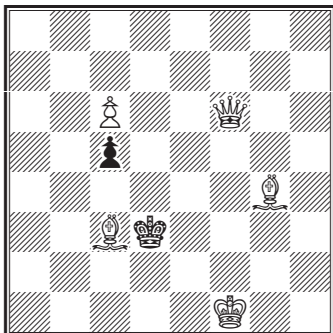
31. Hermann Lehner



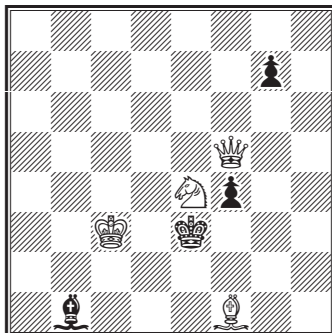
32. S. Loyd



33. S. Loyd

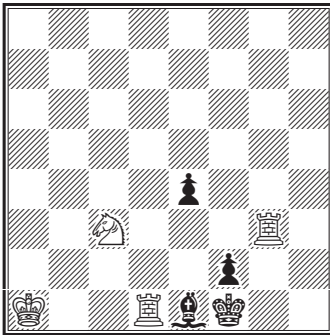


34. S. Loyd

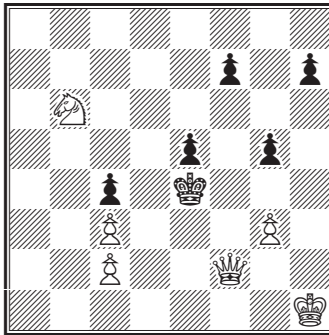




35. S. Loyd

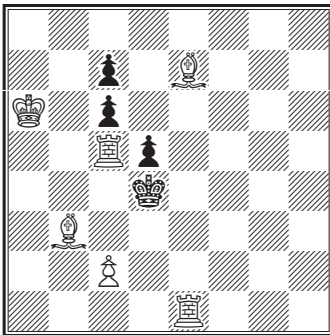


36. S. Loyd

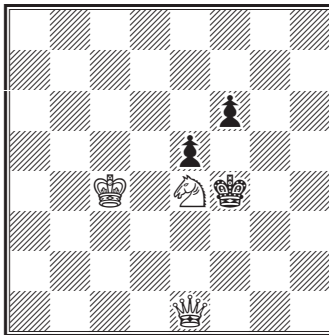


[S]

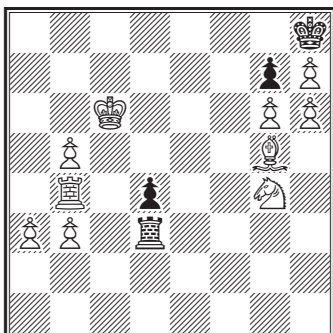
37. S. Loyd



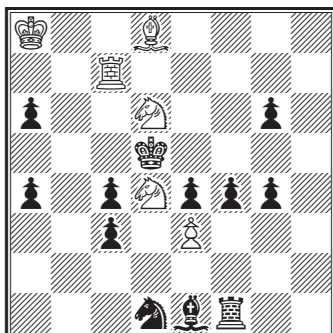
38. S. Loyd



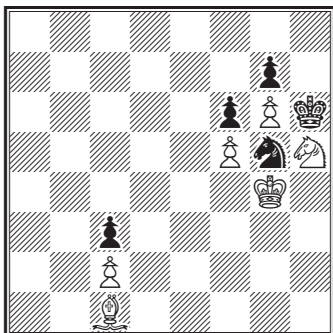
39. Heinrich Meyer



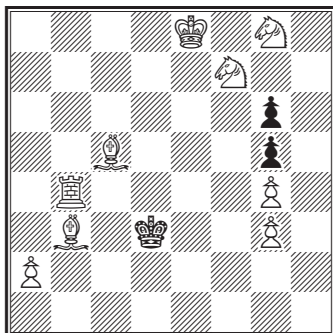
40. L. Noack



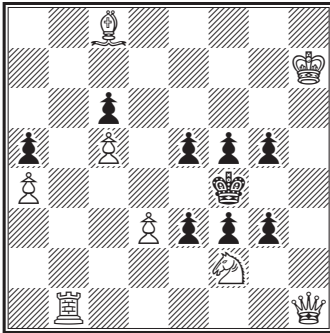
41. E. Pradignat



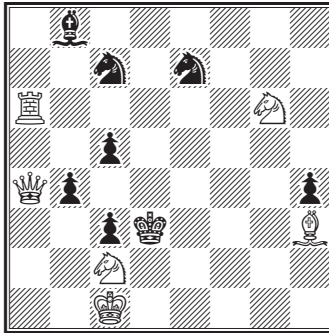
42. E. Pradignat



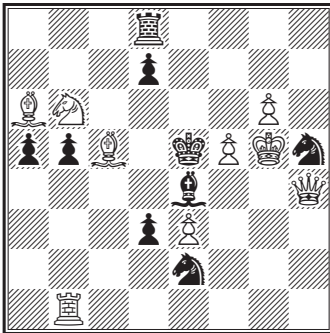
43. E. Pradignat



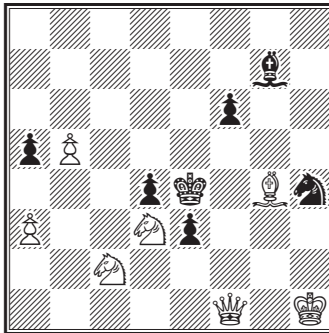
44. Fr. Schrifer



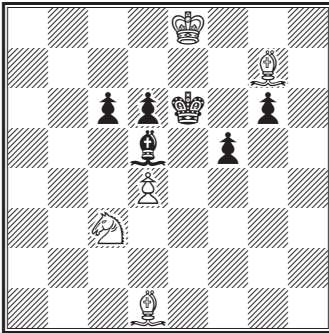
45. Fr. Schrifer



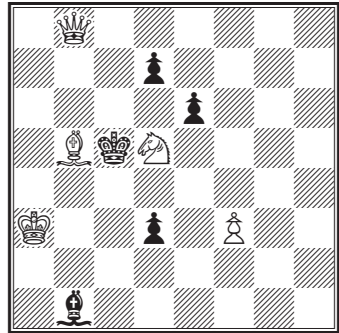
46. Fr. Schrifer



47. Fr. Schrüfer

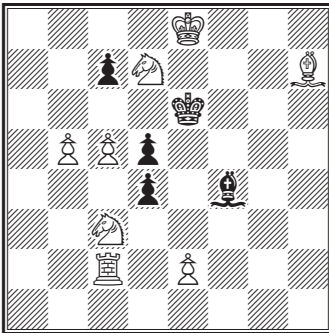


48. Fr. Schrüfer

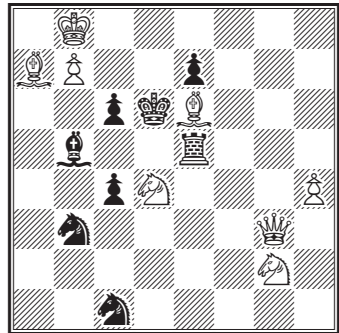


[\*]

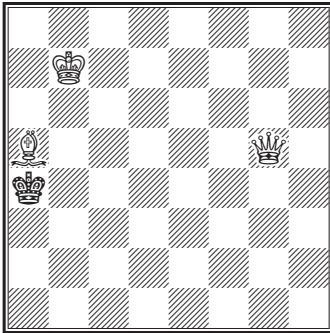
49. Fr. Schrüfer



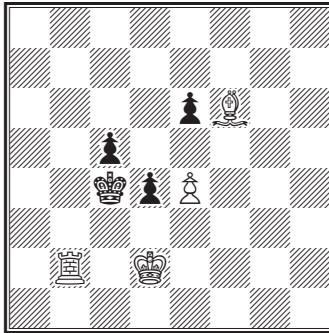
50. Fr. Schrüfer



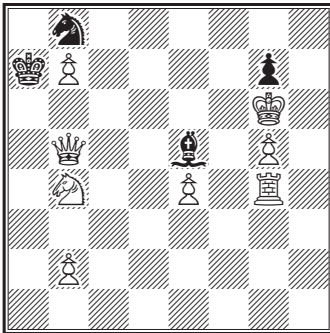
51. W. A. Shinkman



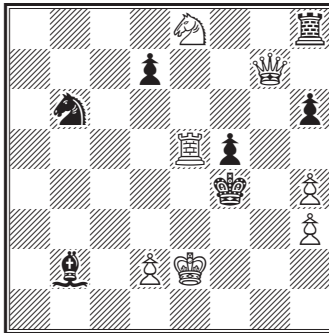
52. W. A. Shinkman



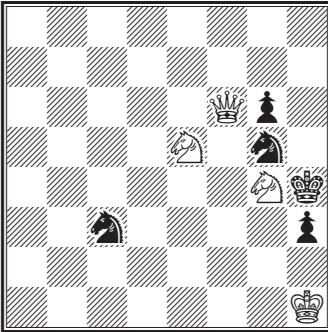
53. C. G. B. Valle



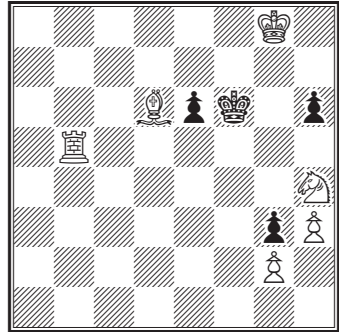
54. Rudolph Willmers



55. R. Willmers

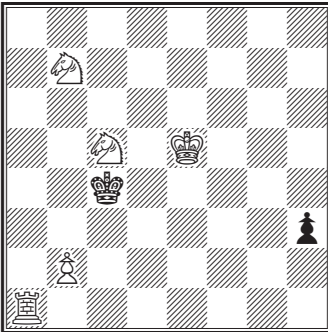


56. R. Willmers

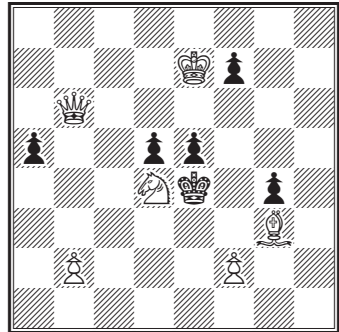


[\*]

57. R. Willmers

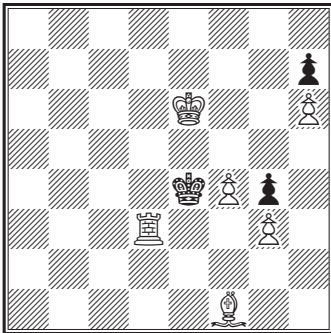


58. R. Willmers



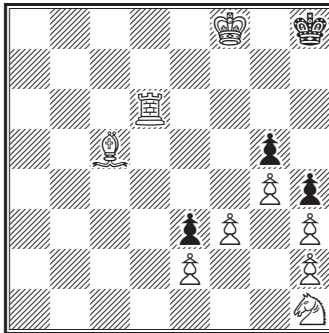
## 4. Bedingungsaufgaben

1. Alfred Herz



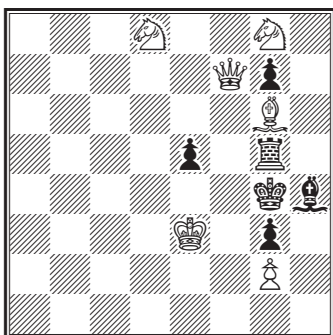
Weiß setzt spätestens mit dem 7. Zuge Matt, ohne Thurm oder Bauer zu ziehn.

2. Horwitz



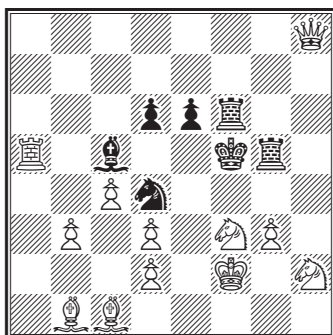
Weiß setzt in 10 Zügen mit dem Springer Matt, ohne einen Bauer zu ziehn oder zu schlagen.

## 3. Horwitz



Weiß soll mit dem Springer d8 mattsetzen, ohne einen feindlichen Stein zu schlagen. [§]

## 4. Heinrich Meyer

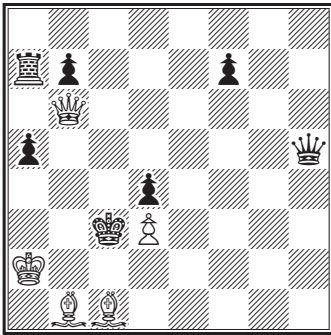


Weiß setzt mit dem 6. Zuge Matt, bei jedem Zuge Schach bietend und Schwarz zwingend, dies ebenfalls mindestens bei den ersten 4 Zügen zu thun, im Fall Schwarz nicht früher matt gesetzt sein will.



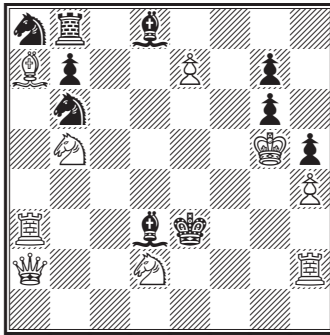
## 5. Selbstmatte

1. Robert Braune



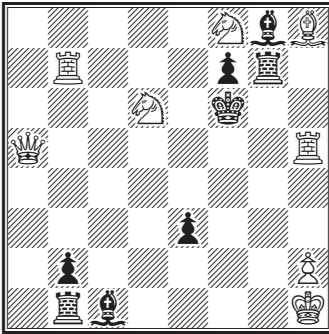
Selbstmatt in 2. Zügen

2. C. A. Gilberg



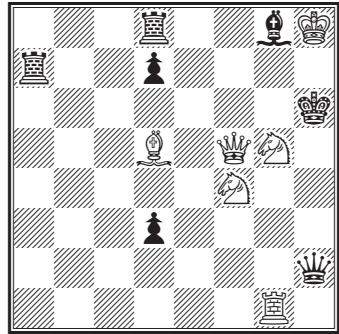
Selbstmatt in 2. Zügen

3. C. A. Gilberg



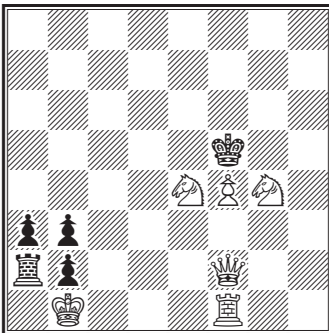
Selbstmatt in 2. Zügen

4. W. A. Shinkman



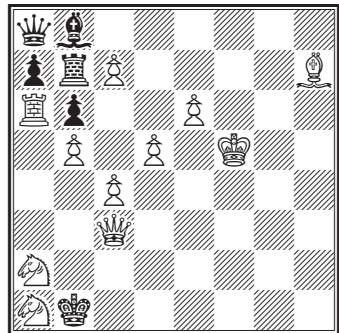
Selbstmatt in 2. Zügen

5. W. A. Shinkman



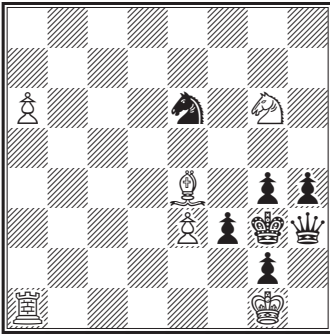
Selbstmatt in 2. Zügen

6. W. A. Shinkman



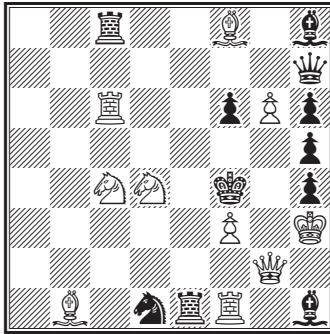
Selbstmatt in 3. Zügen

7. Johann Dobrusky in Prag



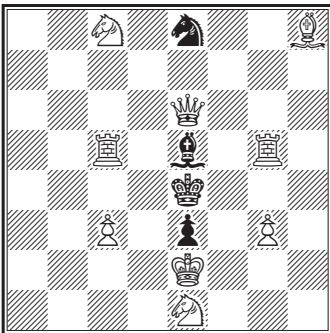
Selbstmatt in 3. Zügen

8. S. Loyd



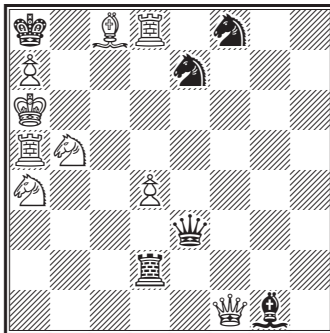
Selbstmatt in 3. Zügen

9. Karl Kondelik



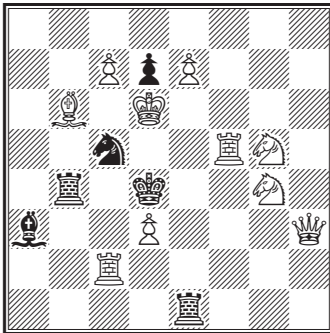
Selbstmatt in 5. Zügen

10. Heinrich Meyer



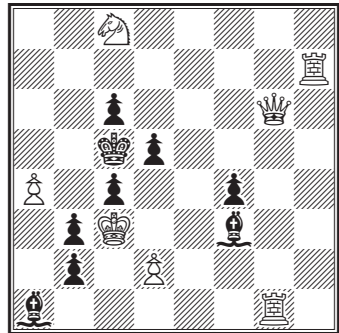
Selbstmatt in 5. Zügen

11. Nadebaum in Tessin



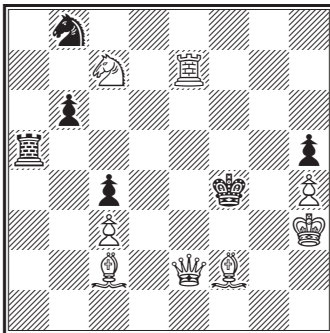
Selbstmatt in 3. Zügen

12. Nadebaum



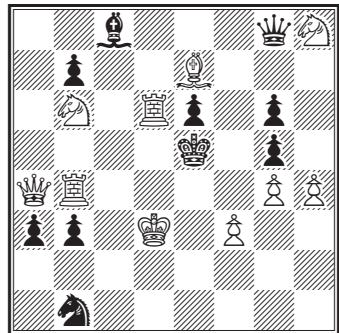
Selbstmatt in 4. Zügen

13. Nadebaum



Selbstmatt in 4. Zügen

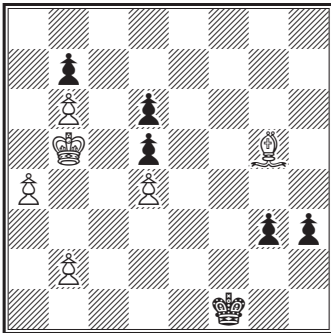
14. Nadebaum



Selbstmatt in 4. Zügen

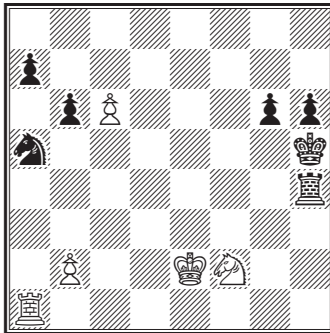
## 6. Studien

1. J. G. Campbell



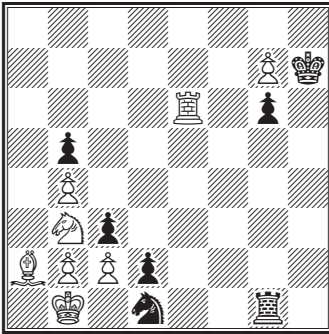
Weiss zieht und macht das Spiel  
unentschieden

2. Coster



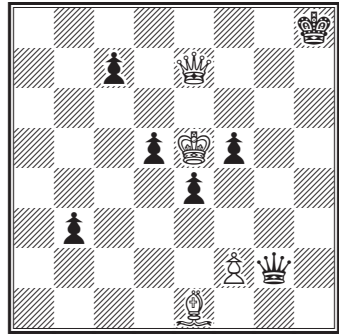
Weiss zieht und gewinnt

3. J. Dufresne



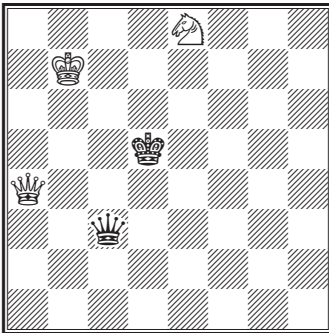
Weiss zieht und macht das Spiel  
unentschieden

4. Emil Feyerfeil in Wien



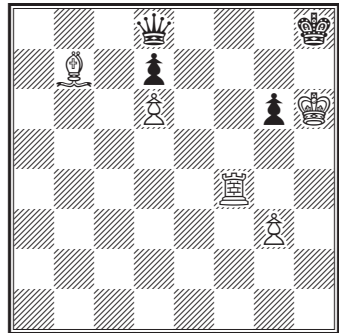
Weiss zieht und gewinnt

5. Carl Heller in Barmen



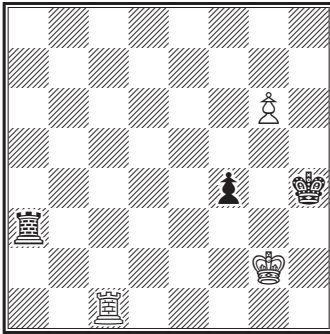
Weiss zieht und gewinnt

6. Horwitz



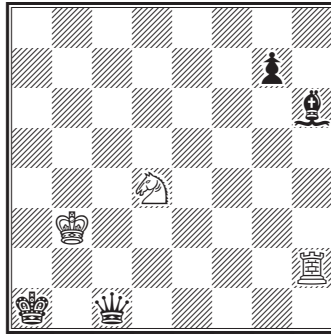
Weiss zieht und gewinnt

7. Horwitz



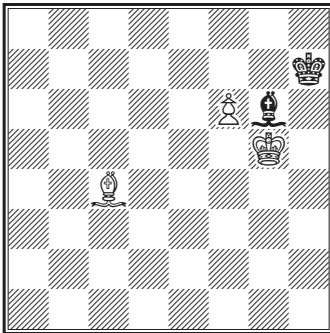
Weiss zieht und gewinnt

8. Horwitz



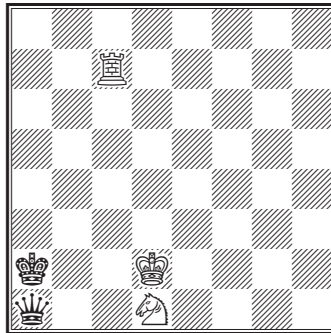
Weiss zieht und gewinnt

9. Horwitz



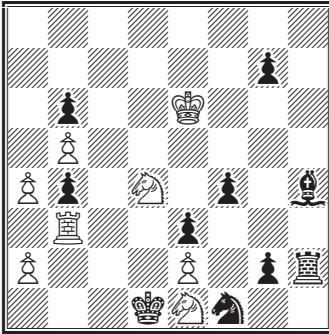
Weiss zieht und gewinnt

10. Horwitz



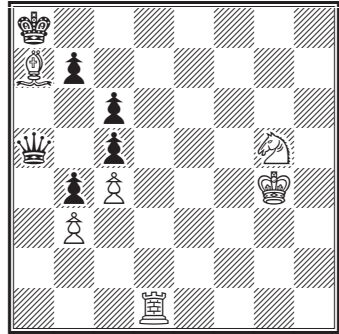
Weiss zieht und gewinnt

11. Horwitz



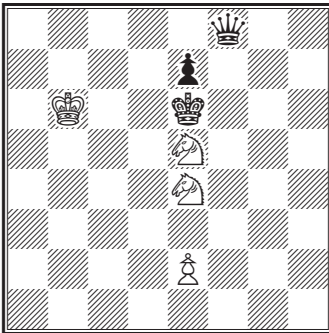
Weiss zieht und gewinnt

12. Horwitz



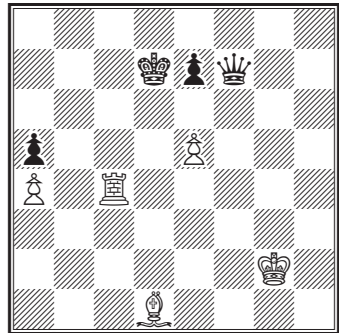
Weiss zieht und gewinnt

13. Kling und Horwitz



Weiss zieht und macht Remis

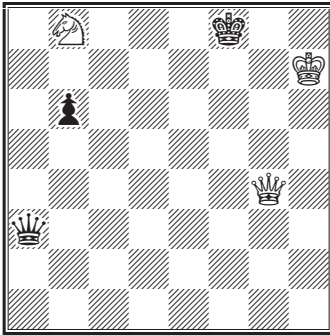
14. Kling und Horwitz



Weiss zieht und gewinnt

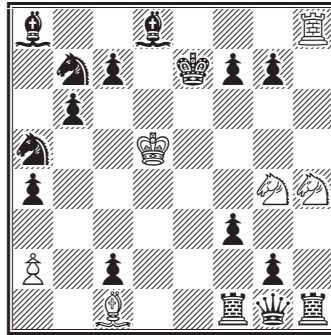


15. Kling und Horwitz

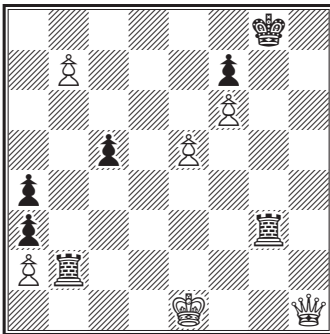


Weiss zieht und gewinnt [\*]

16. Heinrich Meyer

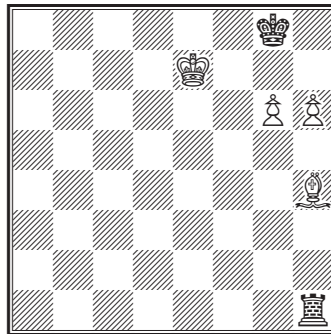
Weiss zieht und macht das Spiel  
unentschieden

17. C. Salvioi in Venedig



Weiss zieht und gewinnt

18. Steinitz



Weiss zieht und gewinnt



# Lösung der Aufgaben

## 1. Lösung der zweizügigen Aufgaben

- |    |                 |                 |             |                    |
|----|-----------------|-----------------|-------------|--------------------|
| 1. | 1. La1, Kd5     | 2. Dd3‡         | 1. ... S×c2 | 2. Dg7‡            |
|    | 1. ... Lb3      | 2. De4‡         | 1. ... d×c2 | 2. Dd4‡            |
|    | 1. ... L~       | 2. D(×)b5‡      | 9.          | 1. Dh6, K×d6       |
|    | 1. ... S~       | 2. S ‡          |             | 1. ... S×d6        |
| 2. | 1. Se4, Ke6     | 2. Da2‡         |             | 2. Lb8‡            |
|    | 1. ... Kd4/×e4  | 2. Dd3‡         |             | 2. Df6‡            |
|    | 1. ... K×c6     | 2. Dd6‡         |             | 1. ... L×e6        |
|    | 1. ... Kc4/~    | 2. Dc5‡         |             | 1. ... ~           |
|    |                 |                 |             | 2. T×e6‡           |
| 3. | 1. Th5, Kd4     | 2. Dd2‡         | 10.         | 1. Dg1, 1. ... Kc7 |
|    | 1. ... Kc2/~    | 2. Sb4‡         |             | 1. ... ~           |
|    |                 |                 |             | 2. Dh2‡            |
| 4. | 1. Lg7, Kd6     | 2. Lf8‡         | 11.         | 1. Db5, Kf5        |
|    | 1. ... Kd4/~    | 2. S ‡          |             | 1. ... Kd3         |
|    |                 |                 |             | 1. ... Dd4‡/D~     |
|    |                 |                 |             | 1. ... T~          |
|    |                 |                 |             | 2. S5e3‡           |
|    |                 |                 |             | 2. Sb4‡            |
|    |                 |                 |             | 2. S5e3‡           |
|    |                 |                 |             | 2. Sf4‡            |
| 5. | 1. Dh7, Ke4/×e6 | 2. S2f4‡        | 12.         | 1. Tg4, K×e4       |
|    | 1. ... ~        | 2. S2(×)f4/Sc3‡ |             | 1. ... ~           |
|    |                 |                 |             | 2. D×c6‡           |
|    |                 |                 |             | 2. D/S/L ‡         |
| 6. | 1. Se2, K×e4    | 2. Sc3‡         | 13.         | 1. Da8, K×e4       |
|    | 1. ... Kc4      | 2. T×d4‡        |             | 1. ... Kg5/T~      |
|    | 1. ... S×e2/~   | 2. D(×)f5/Sc3/  |             | 2. Se3‡            |
|    | Sf4 ‡           |                 |             | 2. Le3‡            |
| 7. | 1. Dd7, Kh3     | 2. Th2‡         | 14.         | 1. T×e4, Kc6       |
|    | 1. ... Kh5      | 2. Dh7‡         |             | 1. ... ~           |
|    | 1. ... ~        | 2. L/D ‡        | 15.         | 1. Sf6, ~          |
|    |                 |                 |             | 2. D/S/P ‡         |
| 8. | 1. Sc2, Ke4/×f4 | 2. De3‡         | 16.         | 1. Dh3, K×f4       |
|    | 1. ... Kf6      | 2. Dg7‡         |             | 1. ... d4          |
|    | 1. ... Kd6      | 2. Dc7‡         |             | 1. ... e6          |
|    |                 |                 |             | 1. ... g×f4        |
|    |                 |                 |             | 1. ... S~          |
|    |                 |                 |             | 2. Dh8‡            |
|    |                 |                 |             | 2. D×e3‡           |

17. 1. Dh8, ~ 2. D/S † 1. ... S×d7 2. Sd6†  
1. ... Sf~ 2. Td8†
18. 1. Sd6, K×d6 2. c8S† 1. ... Sf8 2. e×f8S†  
1. ... K×f6 2. g8S† 1. ... L×f7 2. Td8†
19. 1. Dh6, ~ 2. D/T/S/L † 28. 1. Lf5, ~ 2. D †
20. 1. Sb3, ~ 2. D/T (durch  
entsprechendes Abzug-  
schach) setzt Matt. 29. 1. Dg6, ~ 2. D/T †
21. 1. Lc7 Wenn Weiss diesen Läufer  
auf ein anderes Feld stellt,  
hindert Ta7 des sofortige  
Matt.  
1. ... T×h8 2. Kf2†  
1. ... Ta6 2. Lg6†  
1. ... Ta5 2. Lf5†  
1. ... Ta4 2. Le4†  
1. ... Ta2 2. Lc2†  
1. ... T×a1† 2. Lb1†  
1. ... T~ 2. L †  
1. ... f2 2. Le4/g8†
22. 1. b4, T×b4 2. Sc3†  
1. ... L×b4 2. c4†  
1. ... S×e4 2. Dg8†  
1. ... K×e4 2. c4†  
1. ... c×b5 2. Da8†  
1. ... ~ 2. c4/Sc3 †
23. 1. Tf4, ~ 2. D/T/S/L †
24. 1. Tc4, f4 2. g×f4†  
1. ... ~ 2. D/T/S/L †
25. 1. Th4, Kc3 2. Se2†  
1. ... K×c5 2. Sd3†  
1. ... K×c4 2. Db4†  
1. ... Ke3 2. Dd3†  
1. ... K×e5 2. Lg7†
26. 1. Le2, K×d2 2. Dd3†  
1. ... L×d2 2. D×e5†  
1. ... e4 2. Dg5†
27. 1. Td7, K×d7 2. Dc6†  
1. ... K×f7 2. e8D†
31. 1. Da8, K~ 2. D/S/L †  
1. ... S~ 2. T †
32. 1. Lc6, S×c6 2. K×c6†  
1. ... Sd5 2. Sb5†  
1. ... S~ 2. Te4†  
1. ... Th5 2. S×e6†  
1. ... ~ 2. D †
33. 1. Db1, Kf5 2. Ld7†  
1. ... Kd6 2. f5†  
1. ... ~ 2. D/L/f5 †
34. 1. Tb7, K×d5 2. Tbd7†  
1. ... Ke3/~ 2. Te7†
35. 1. Db7, ~ 2. D/T/L †  
durch entsprechendes  
Abzugschach.
36. 1. Sc3, ~ 2. D/T/S/f3/  
f×e3 †
37. 1. Sc7, Kc5 2. Se6†  
1. ... ~ 2. S/L †
38. 1. Kb7, D×b3† 2. L×b3†  
1. ... L×d5† 2. L×d5†  
1. ... a6 2. L(×)a6  
1. ... ~ 2. L/S/D †
39. 1. Tc6, Dd1†/f1† 2. Tc1†  
1. ... Dc3† 2. T×c3†  
1. ... Df6† 2. T×f6†  
1. ... ~ 2. T/L †
40. 1. Dd8, K×f4 2. Df6†  
1. ... S×f4 2. d4†  
1. ... ~ 2. D/T †

- |  |  |   |  |
|--|--|---|--|
| 41. 1. Qg1, K×d6<br>1. ... Kd4<br>1. ... Kf6/~   | 2. Qh2‡<br>2. f4‡<br>2. Qg7‡   | 1. ... Q×f1<br>1. ... ~   | 2. Bg7‡<br>2. D/T/S/L ‡                              |
| 42. 1. Se2, fxe2<br>1. ... ~   | 2. f4‡<br>2. D/L ‡   | 55. 1. Bh4, Ke7<br>1. ... K×e5<br>1. ... T~                           | 2. Sf5‡<br>2. Bg3‡<br>2. c5‡                         |
| 43. 1. Qb1, c×d2<br>1. ... ~   | 2. c4‡<br>2. D/T/S/L ‡   | 56. 1. Qd7, Kb6<br>1. ... Kd4<br>1. ... ~                             | 2. Sa4‡<br>2. Q×d6‡<br>2. D/L/S ‡                    |
| 44. 1. Qa1, K×g2<br>1. ... B×g2<br>1. ... Sa~<br>1. ... ~                                  | 2. Be4‡<br>2. Qd1‡<br>2. Qa8‡<br>2. Qf1‡                             | 57. 1. Bh1, Ta1~<br>1. ... ~<br>[ 1. b4 ]                             | 2. Dg1/a7 ‡<br>2. D/T/S ‡                            |
| 45. 1. Bf6,  | 2. T/L/S ‡   | 58. 1. Rf3, K×f3<br>1. ... S×f3<br>1. ... d4<br>1. ... e5<br>1. ... ~ | 2. Se5‡<br>2. Sg3‡<br>2. Qc6‡<br>2. Se1‡<br>2. D/T ‡ |
| 46. 1. Qc4, Kf4<br>1. ... K×d6<br>1. ... f4/T~   | 2. Se2‡<br>2. S×f5‡<br>2. Qc5/Sb5‡                                   | 59. 1. Qc2, ~   | 2. D/T/S ‡   |
| 47. 1. Qf7, K×e4<br>1. ... ~   | 2. Qh7‡<br>2. Se5/c5‡  | 60. 1. Kg7, R~  | 2. K×T/T/S/‡   |
| 48. 1. Re6, ~  | 2. D/T ‡   | 61. Qd1, exd1<br>1. ... d×e1/Kh4<br>1. ... h4<br>1. ... ~             | 2. Re4‡<br>2. Qa4‡<br>2. Q×e2‡<br>2. Q(×)a4‡         |
| 49. 1. Qd3, ~<br>Abzugschach).   | 2. D/K ‡ (durch  | 62. 1. Rf4, B×f8<br>1. ... ~  | 2. Re7‡<br>2. D/T/L/S ‡                              |
| 50. 1. Sb8, Qd4<br>1. ... Bf6<br>1. ... Bg7<br>1. ... ~                                    | 2. Sd7‡<br>2. Sc6‡<br>2. B×g7‡<br>2. D ‡                             | 63. 1. Sf6, ~   | 2. Q ‡   |
| 51. 1. Qb8, Kb3<br>1. ... Kd4<br>1. ... d4   | 2. K×c5‡<br>2. Qf4‡<br>2. Qg8‡                                       | 64. 1. Rf3, ~<br>durch entsprechendes<br>Abzugschach Matt             | 2. S setzt stets                                     |
| 52. 1. Qb4, e3/f3<br>1. ... ~  | 2. c5‡<br>2. Q ‡   | 65. 1. Rf5, R×b3<br>1. ... K×b3<br>1. ... ~                           | 2. Sg5‡<br>2. Sc5‡<br>2. Qa4‡                        |
| 53. 1. Sb7, K×e7<br>1. ... Kd7<br>1. ... Ke5<br>1. ... K×f7<br>1. ... Tf6~<br>1. ... Le5/~ | 2. Qe8‡<br>2. Sc5‡<br>2. Q×f6‡<br>2. Sd8‡<br>2. Sd8‡<br>2. Sd8/Q×f6‡ | 66. 1. Bh1, d5<br>1. ... ~  | 2. Sg2‡<br>2. Q ‡                                    |
| 54. 1. Qf1, K×e5<br>1. ... B×e5  | 2. Qa1‡<br>2. Sd5‡   | 67. 1. Bf4, Kf5<br>1. ... T~<br>1. ... S~                             | 2. Qg4‡<br>2. D(×)e4/(×)e5 ‡<br>2. Qg4/g8 ‡          |

- |     |   |  |  |   |
|-----|---|--|--|---|
| 68. | 1. e, Kd3<br>1. ... dxe3 ep./fxe3 ep.<br>1. ... ~                                   | 2. Sc1†<br>2. Sxe3†<br>2. S(×)e5†                                  | 1. ... c3<br>80. 1. Rg6, ~<br>81. 1. c4, ~   | 2. Sd7†<br>2. D/T/S/L †<br>2. D/S †                                 |
| 69. | 1. Qh7, Kf4<br>1. ... Kd4<br>1. ... Kf6<br>1. ... Kd6                               | 2. Sd3†<br>2. Sc6†<br>2. Sg4†<br>2. Sc4†                           | 82. 1. e6, ~<br>83. 1. Sb7, Kxb4<br>1. ... Kc4<br>1. ... Sa4<br>1. ... Sc4/d2              | 2. Dd3/e4/f5/Le4†<br>2. Sd6†<br>2. Sa5†<br>2. Sa5†<br>2. Sc5†       |
| 70. | 1. Rg5, Kxe3<br>1. ... fxg5<br>1. ... dxe3<br>1. ... Sxe2/~                         | 2. Re5†<br>2. Qe6†<br>2. Qxh4†<br>2. Rb3/e7 †                      | 84. 1. Kh8, ~<br>85. 1. Se6, ~   | 2. D/S/L †<br>2. D/T/S †  |
| 71. | 1. Ba6, Rc4<br>1. ... Re4<br>1. ... Rxf4<br>1. ... Rd3<br>1. ... Rd2/d1<br>1. ... ~ | 2. Bb7†<br>2. Qxe4†<br>2. Sxf4†<br>2. Qxd3†<br>2. Qe4†<br>2. D/S † | 86. 1. Sb3, Kxf3<br>1. ... ~<br>87. 1. Qc5, Qxc5<br>1. ... Sxc5<br>1. ... Bxd5<br>1. ... ~ | 2. Sbd2†<br>2. D/T/S †<br>2. Sf6†<br>2. Sc3†<br>2. Qc2†<br>2. D/S † |
| 72. | 1. Sxf4, exf4   | 2. Qh8†  | 88. 1. Bd1, S2~<br>1. ... ~  | 2. S(×)d4†<br>2. D/T/S †  |
| 73. | 1. Re4, Kxc4<br>1. ... Kxe4<br>1. ... dxc4<br>1. ... dxe4                           | 2. Se5†<br>2. Sxc5†<br>2. Sxc5†<br>2. Se5†                         | 89. 1. Qa6, Kxd5<br>1. ... Kxd3<br>1. ... Kf5<br>1. ... exd5<br>1. ... exf4                | 2. Sxc3†<br>2. Sd6†<br>2. Rxe5†<br>2. Qg6†<br>2. R3xd4†             |
| 74. | 1. e6, ~  | 2. D/T †   | 90. 1. Qe3, g6<br>1. ... ~   | 2. Rf7†<br>2. D †   |
| 75. | 1. Re1, Ke6<br>1. ... c5<br>1. ... ~  | 2. Sc5†<br>2. Sf6†<br>2. D/S †                                     | 91. 1. Kf3, Kxd4<br>1. ... Kf5<br>1. ... cxd4  | 2. Bb2†<br>2. Rd5†<br>2. Ra5†                                       |
| 76. | 1. Bc3, Ke3/Bg1<br>1. ... g2<br>1. ... Se3<br>1. ... S~                             | 2. Qf3†<br>2. Qe1†<br>2. Be1†<br>2. B(×)d4†                        | 92. 1. Qh4, ~<br>93. 1. Bd5, ~   | 2. D/T/S †<br>2. D/S/L/T †  |
| 77. | 1. Sd5, Kxd7†<br>1. ... ~   | 2. Rg6†<br>2. D/T/S †  | durch Abzugschach  |   |
| 78. | 1. Bc7, ~   | 2. D/T/S/L †   | 94. 1. Ba4, Kxd5<br>1. ... d6<br>1. ... f6<br>1. ... f5<br>1. ... e4                       | 2. Bb3†<br>2. Sbc7†<br>2. Sdc7†<br>2. Qg8†<br>2. Qxe4†              |
| 79. | 1. Sf2, Kf6<br>1. ... Kd6<br>1. ... Kd4<br>1. ... Kf4                               | 2. Sce4†<br>2. Sa6†<br>2. Sb3†<br>2. d4†                           |  |   |

95. 1. Bh3, K×f2      2. Bd4‡      99. 1. Rb6, D~      2. D/S †  
1. ... Kd2      2. Bf4‡      1. ... Ra4      2. b×a4‡  
1. ... Ke1      2. Sbd3‡      1. ... Rb4      2. Sc3 †  
1. ... Ke3      2. Sbd1‡      1. ... Rc4      2. b×c4‡  
1. ... Rd4      2. Se3‡  
1. ... Re4      2. f×e4‡  
1. ... Rg4      2. f×g4‡  
1. ... Rh4      2. f4‡
96. 1. Bg7, Se4      2. Sb3‡      100. 1. Qe2, K×b8      2. Qh2‡  
1. ... Sd5      2. Sc6‡      1. ... K×d8      2. Bb6‡  
1. ... S~      2. Rh4/d8 †      1. ... Kd6      2. Bf4‡  
1. ... e4      2. B×f6‡      1. ... d×e2      2. Sa6‡
97. 1. Be4, d×e4      2. Se6‡  
1. ... Kd4      2. Qc3‡  
1. ... d4/Kf4      2. Qc7‡
98. 1. Rd1, K×c5      2. d4‡  
1. ... ~      2. D/T/S †

## 2. Lösung der dreizügigen Aufgaben

- |    |   |   |  |
|----|---|---|--|
| 1. | 1. Dg1, b3<br>1. ... Kb3  | 2. Lb4, Kxb4<br>2. ... axb4<br>2. Dg8† &c.  | 3. Dd4‡<br>3. Da7‡   |
| 2. | 1. Lh4, Ke6<br>1. ... e5<br>1. ... Lb7<br>1. ... e6<br>1. ... Sd3 | 2. Df5†, Kxf5<br>2. Sxb6†, Ke6<br>2. Db3†, Kc6<br>2. Dc3, ~<br>2. Dc4†, Kxc4        | 3. Sd4‡<br>3. Dg6‡<br>3. Sb8‡<br>3. S ‡<br>3. Sxb6‡                  |
| 3. | 1. Lf5, e5<br>1. ... e6   | 2. Dc8, Ke7<br>2. ... e4<br>2. Dc5, exf5<br>2. ... e5                               | 3. Df8‡<br>3. De6‡<br>3. Dd6‡<br>3. Df8‡                             |
| 4. | 1. Sg5, Kxe5<br>1. ... dxe5                                       | 2. c3, Kd5<br>2. ... d5<br>2. Se4, K-   | 3. Db5‡<br>3. Df4‡<br>3. Dd3‡/Db5‡/Df7‡                              |
| 5. | 1. Ld4, Lxd4<br>1. ... d1D<br>1. ... d1S                          | 2. Te5, ~<br>2. Dh2† &c.<br>2. Df1† &c  | 3. D/T ‡   |
| 6. | 1. Sc3, Kxd6<br>1. ... Txf7<br>1. ... Dxf7<br>1. ... b5/c5        | 2. Dc6†, Kxc6<br>2. ... Ke5/Ke7<br>2. Td5† &c.<br>2. De4† &c.<br>2. Dxg3†, Kf5      | 3. b5‡<br>3. Df6‡<br>3. Tf6‡   |
| 7. | 1. Sd5, Lxd5<br>1. ... Kd4  | 2. Sxb5, Le4<br>2. ... Le6<br>2. ... ~<br>2. Sxb5†, Kd3<br>2. ... Kc5<br>2. ... Ke5 | 3. Dd6‡<br>3. Dd4‡<br>3. D(x)f5‡<br>3. Sf4‡<br>3. d4‡<br>3. Dd6, d4‡ |
| 8. | 1. Sxf5, e4<br>1. ... Ke4   | 2. Dc4, Kxf3<br>2. ... Kxf5<br>2. Sd2†, Kd5   | 3. Df1‡<br>3. Df7‡<br>3. Dc4‡  |



9. 1. Db2, Lxc4 2. Db8, Kxd4 3. De5‡  
2. ... Lb5 3. Da7‡  
2. ... ~ 3. Db4‡
10. 1. Se5, Kxe5 2. De3, ~ 3. S setzt durch entsprechendes Ab-  
zugschach Matt.  
1. ... ~ 2. Sg6†/Lg5† &c.
11. 1. De8, Ke5 2. Db5, Kf4/Kd6 3. Db8‡  
2. ... Kd4/Kf6 3. Db2‡  
1. ... Kg3 2. Dh5, Kf2/~ 3. D×h2‡  
1. ... S~ 2. Dh5, ~ 3. D×h2‡
12. 1. Se4, Kxd3 2. Dc5, Kxe4 3. Lf5‡  
2. ... S~ 3. Dc4‡  
2. ... Ld2 3. Sf2‡  
2. ... Le3 3. Dc4‡  
1. ... Sd5 2. De5†, Kxe5 3. Sf3‡  
2. ... Kxd3 3. Sf2‡
- Andere Varianten leicht.
13. 1. De8, Kc4 2. Db5†, Kxb5 3. Le2‡  
1. ... Lf3 2. Db5†, Ke4 3. Lc2‡  
1. ... Lxd5 2. Db5†, ~ 3. Db1‡  
1. ... ~ 2. Da4, ~ 3. Dc2‡
14. 1. Ld3, Lxh4 2. Dc3, bxc3 3. dxc3‡  
2. ... ~ 3. D ‡  
1. ... Ta7 2. Lg6, ~ 3. De4/Df5 ‡  
1. ... ~ 2. Dd1, ~ 3. D ‡
15. 1. Lc6, e1 2. Sxf4†, K~ 3. Df8‡  
1. ... Lxh3 2. Sxe3†, K~ 3. Da3‡  
1. ... Kf5 2. De8, ~ 3. Ld7‡  
1. ... Kd3 2. Lxb5†, Kc2 3. Da4‡  
2. ... Ke4 3. Se7‡
16. 1. Sf4, Kf5 2. Df6†, Kxf6 3. Se6‡  
2. ... Ke4 3. Ld5‡  
2. ... Kg4 3. Lh5‡  
1. ... Sb3 2. Dc2†, Kd4/Ke5 3. Se2‡  
1. ... bxa4 2. Df6, ~ 3. Ld5/Lg6 ‡
17. 1. Lg3, Db6/De6 2. D(×)e4†, Kd6 3. Txf7‡  
1. ... Sd7† 2. Dxd7†, Ke5 3. Sc6‡  
1. ... ~ 2. Dd6†, Kxd6 3. Td4‡

- |     |  |  |   |
|-----|--|--|---|
| 18. | 1. Sd6, K×d4<br>1. ... Sh~   | 2. Sc6†, Kc5<br>2. Sc6†, Ke6   | 3. Lb4‡<br>3. Lf5‡  |
| 19. | 1. Sc5, Sc4<br>1. ... Sc6<br>1. ... T×c7<br>1. ... Tg7†<br>1. ... Th7              | 2. Td5†, K×d5<br>2. Td5†, K×d5<br>2. Lg6†, f5<br>2. Lg6†, f5<br>2. L×h7†, f5   | 3. Le4‡<br>3. Le6‡<br>3. T×f5‡<br>3. T×f5‡<br>3. T×f5‡                        |
| 20. | 1. Sc5, K×d4<br>1. ... ~   | 2. Df4†, Kc3<br>2. Df4†, K×f4  | 3. Sa4‡<br>3. Sd3‡  |
| 21. | 1. Tc1, Se4<br><br>1. ... Le5<br><br>1. ... S~                                     | 2. Db3, c×b3<br>2. ... ~<br>2. Td1†, Ke4<br>2. ... S×d1<br>2. ... Ld4<br>2. Dg2†, Se4                                    | 3. c4‡<br>3. Db7/S(x)c7 ‡<br>3. Dg2‡<br>3. Dg2‡<br>3. S×f6‡<br>3. S(x)c7‡     |
| 22. | 1. Se1, K×e5<br><br>1. ... e3<br>1. ... S×d7<br>1. ... Sf7<br>1. ... g5/g×h5       | 2. Td4, K×d4<br>2. ... K×f4<br>2. ... Ke6/~<br>2. Sif3, ~<br>2. S×d7, ~<br>2. S×f7, ~<br>2. Lc4†, K×e5                   | 3. Sf3‡<br>3. Sd3‡<br>3. Td(x)e4‡<br>3. Lc4‡<br>3. Lc4‡<br>3. Lc4‡<br>3. Tf5‡ |
| 23. | 1. Teh3, La1<br>1. ... Le3<br>1. ... Tb2<br>1. ... T×b3<br>1. ... S~<br>1. ... Ld3 | 2. Tb2, ~<br>2. T×e3, ~<br>2. T×b2, &c.<br>2. T×b3, &c.<br>2. Tc2†, ~<br>2. T×d3, &c.                                    | 3. b4/Tc3‡<br>3. Tc3/T×e5 ‡<br><br><br>3. S×e6/T×c3 ‡                         |
| 24. | 1. Tf4, Kb5<br><br>1. ... e×f4<br><br>1. ... Lc6<br><br>1. ... Lc8<br>1. ... Le8   | 2. Da4†, K×a4<br>2. ... Ka6<br>2. Sc5†, Kb5<br>2. ... b×c5<br>2. Sc5†, Kb5<br>2. ... b×c5<br>2. Da4, &c.<br>2. L×e8, &c. | 3. Sc3‡<br>3. Sb4‡<br>3. S×d4‡<br>3. D×a5‡<br>3. Db4‡<br>3. D×a5‡             |
| 25. | 1. Th2, K×f3<br>1. ... K×e3<br>1. ... Kd3<br>1. ... Kd5                            | 2. De6, Kg3<br>2. Dg4, Kd3<br>2. De8, Kc4<br>2. Th4, Kd6   | 3. Dh3‡<br>3. Dd4‡<br>3. Db5‡<br>3. Td4‡                                      |

26. 1. Kd2, Kh1      2. Dc6, g1      3. Sf2‡  
     1. ... Kf1      2. ... Kg1      3. Dc1‡  
     1. ... Th1      2. Df6‡, Kg1    3. Da1‡  
                     2. De5, ~      3. Da1‡
27. 1. Dd8, b5      2. Lb4, K×b4      3. Dd4‡  
                     2. ... L×b4      3. Dd1‡  
                     2. ... a×b4      3. Da8‡  
     1. ... ~      2. D×b6/Dd3, ~    3. D ‡
28. 1. Dd8, Lf3      2. Tf4, S×f4      3. d4‡  
                     2. ... K×f4      3. Sg6‡  
                     2. ... Ld6      3. Dg5‡  
                     2. ... Ld5      3. D×b8‡  
                     2. ... ~      3. Dd4/Tf5 ‡  
     1. ... Sf2/Sc5    2. Td5‡, Kf4      3. Tf5‡  
     1. ... Sf6      2. Sg6‡ &c.  
     1. ... Se7      2. Te4‡ &c.
29. 1. Df8, e6      2. Dc5‡, Kf6      3. Se4‡  
                     2. ... Kf4      3. Tf7‡  
     1. ... Kd4      2. Df4‡, Kc5      3. Sd3‡  
     1. ... ~      2. T×e7‡, ~      3. D/T/S ‡
30. 1. Sd3, e×d5    2. Sf2‡, Kf5      3. g4‡  
                     2. ... Kd4      3. Db6‡  
     1. ... K×d5      2. Dh4, Kd6/e4    3. Dd8‡  
     1. ... Kf5      2. T×e5‡, Kg4      3. Dh3‡
31. 1. Da7, K×f4    2. De7, ~      3. e3‡  
     1. ... Ke5      2. De3‡, Kf6      3. Sh5‡  
     1. ... ~      2. e3, ~      3. D ‡
32. 1. Td3, c×d3    2. Tfd5, L×d5    3. Lh3‡  
                     2. ... ~      3. Sd8‡
33. 1. Th3, b3      2. Th1, g×h1(‡)    3. D×h1‡
34. 1. Se8, Kf4      2. Sc5, Kg5      3. Se6‡  
                     2. ... Ke3      3. Df2‡  
                     2. ... Ke5      3. De4‡  
     1. ... Kd4      2. Kf3, ~      3. De4‡
35. 1. D×h5, K×d4    2. Df3, Ke5      3. Dd5‡  
                     2. ... c3      3. D×f4‡  
                     2. ... d6/d5      3. Sc6‡  
     1. ... Kf5      2. Dh6, &c.  
     1. ... d6      2. Td5‡, &c.



- |                               |                  |              |
|-------------------------------|------------------|--------------|
| 1. ... d1S                    | 2. Sb3†, Ke3     | 3. Sg4‡      |
| 1. ... g×f5                   | 2. S×f5†, K~     | 3. Db1/Db5 † |
| 1. ... a×b2                   | 2. Df2†, &c/     |              |
| 46. 1. Lf3                    |                  |              |
| Es droht 2. Sd8† und 3. Lg4‡. |                  |              |
| 1. ... Lf6                    | 2. d5†, ~        | 3. Dc8/Lg4 † |
| 1. ... L×d4                   | 2. Sd8†, ~       | 3. Sc4/Lg4 † |
| 1. ... Kd7                    | 2. Lg4†, &c.     |              |
| 1. ... Kf5                    | 2. Dh6, &c.      |              |
| 1. ... Kf6                    | 2. Sd8†, &c.     |              |
| 1. ... Sc6                    | 2. Sg5†, &c.     |              |
| 1. ... c5                     | 2. Dd6†, &c.     |              |
| 47. 1. Ta2, e×d4              | 2. Ld7, K×d3     | 3. Lf5‡      |
| 48. 1. Le8, S×e8              | 2. Tg5, L×g5     | 3. S×g3‡     |
|                               | 2. ... f4        | 3. Te5‡      |
|                               | 2. ... ~         | 3. S(×)f6‡   |
| 49. 1. De4, K×c5              | 2. Sd8, Kd6      | 3. Dd4‡      |
|                               | 2. ... ~         | 3. Sb7‡      |
| 50. 1. La2, S×a2              | 2. Td4†, ~       | 3. D †       |
| 1. ... Ke6                    | 2. Df5†, K×f5    | 3. T×f4‡     |
| 1. ... e6                     | 2. e4†, f×e3 ep. | 3. D×g2‡     |
| 51. 1. Sb5, Ld5               | 2. Te6, K×e6     | 3. Sd4‡      |
|                               | 2. ... L×e6      | 3. Sd6‡      |
| 1. ... ~                      | 2. Sd4†, ~       | 3. Te7‡      |
| 52. 1. Tg4, S×e5              | 2. Dd4†, K×d4    | 3. T×f4‡     |
|                               | 2. ... K~        | 3. D×f4‡     |
| 1. ... Td1                    | 2. D×e3†, K×e3   | 3. Te2‡      |
|                               | 2. ... Kf5       | 3. D×f4‡     |
| 1. ... T×c1                   | 2. T×f4†, Kd3    | 3. Dh7‡      |
|                               | 2. ... K×e5      | 3. Dc7‡      |
| 1. ... Kf5                    | 2. T×f4†, &c.    |              |
| 53. 1. Tg5, e4                | 2. Db4, ~        | 3. D/S †     |
| 1. ... L×g5                   | 2. Sf5†, g×f5    | 3. Df2‡      |
| 1. ... e×d4                   | 2. De7, L×g5     | 3. De1‡      |
|                               | 2. ... ~         | 3. Tg4‡      |
| 54. 1. Sa6, a×b6              | 2. Db4†, K×a6    | 3. Da4‡      |
|                               | 2. ... Kc6       | 3. Sb8‡      |
| 1. ... b×a6                   | 2. Sd5, a5       | 3. Sc3‡      |
| 1. ... Ka5                    | 2. Sc7, &c.      |              |

1. ...  $K \times a6$       2.  $Db4, \&c.$
55. 1.  $Df2, K \times e7$       2.  $Ld6 \dagger, K \times d6$       3.  $Dc5 \ddagger$   
     2. ...  $K \sim$       3.  $Df8 \ddagger$   
 1. ...  $Kg7$       2.  $Le5 \dagger, K \sim$       3.  $Dh4 \ddagger$   
 1. ...  $\sim$       2.  $Lh6 \dagger, \sim$       3.  $Df4/Df8 \ddagger$
56. 1.  $Dh1, g6$       2.  $Tf3, \sim$       3.  $D/T/S \ddagger$   
 1. ...  $L \times h1$       2.  $Tf5 \dagger, Ke4$       3.  $Sg3 \ddagger$   
 1. ...  $d3$       2.  $Tf5 \dagger, Kd4$       3.  $Da1 \ddagger$
57. 1.  $Lb6, Ke5$       2.  $Sce4 \dagger, Kf4$       3.  $g3 \ddagger$   
 1. ...  $e6$       2.  $Sce4 \dagger, L \times e4$       3.  $Ld8 \ddagger$   
     2. ...  $Ke7$       3.  $Ta7 \ddagger$   
 Auf 1. ...  $e5$  folgt 2.  $Ld8 \ddagger$ , ebenso auf 1.  $Lf5$  beliebig, 2.  $Sd7$  oder  $Se4 \ddagger$   
 1. ...  $g3$       2.  $Sce6, \&c.$
58. 1.  $Te5, Tf8$       2.  $Dh2, K \times e5$       3.  $Db2 \ddagger$   
     2. ...  $L \times e5$       3.  $Df2 \ddagger$   
     2. ...  $Sd3/e2/g2$       3.  $S(\times)e2 \ddagger$   
     [ 2. ...  $Sd5!$  ]  
 [ 1.  $Te5, Tf8$     2.  $Dh1, \sim$     3.  $D \ddagger$  ]
59. 1.  $Ka7, f4$       2.  $Da5 \dagger, f5$       3.  $Dd8 \ddagger$   
     2. ...  $Kh4$       3.  $Dh5 \ddagger$   
 1. ...  $Lg2/Lf1$       2.  $h4 \dagger, \&c.$   
 1. ...  $g3$       2.  $D \times g3 \dagger, Lg4$       3.  $h4 \ddagger$   
 1. ...  $g6$       2.  $L \times f6 \dagger, \&c.$
60. 1.  $Da6, Sf6$       2.  $De6 \dagger, T \times e6$       3.  $Sf7 \ddagger$   
 1. ...  $h3$       2.  $Dg6, Sf6$       3.  $Dg3 \ddagger$   
     2. ...  $\sim$       3.  $D/S \ddagger$   
 1. ...  $Lc7$       2.  $Da1 \dagger, Kd6$       3.  $Dd4 \ddagger$
61. 1.  $Ta6, Kf4$       2.  $L \times b6, Kg3/Ke5$       3.  $Lc7 \ddagger$   
     2. ...  $K \times g5$       3.  $Le3 \ddagger$   
 1. ...  $b5$       2.  $Tf6, b4$       3.  $Tf3 \ddagger$
62. 1.  $Te3, Kd4$       2.  $Te4 \dagger, K \times e4/Kc5$       3.  $De3 \ddagger$   
 1. ...  $Sac6$       2.  $Te7, K \times d6$       3.  $D \times b4 \ddagger$   
     2. ...  $Sd4$       3.  $Te5 \ddagger$   
     2. ...  $Kd4/\sim$       3.  $De3 \ddagger$   
 1. ...  $Sa \sim$       2.  $Te5 \dagger, Kd4$       3.  $De3 \ddagger$
63. 1.  $Da3, b \times a3$       2.  $Tc4, a2$       3.  $e4 \ddagger$   
 1. ...  $K \times e4$       2.  $Da7, Kd5$       3.  $Db7 \ddagger$   
     2. ...  $Kf5$       3.  $Dh7 \ddagger$   
     2. ...  $Kf3$       3.  $Se1 \ddagger$

1. ... Kc6            2. Da8†, Kb5/Kb6    3. T×b4‡  
                           2. ... Kd7            3. Sc5‡
64. 1. Lxa4, Kxe6    2. Df5†, Kxf5        3. Ld7‡  
                           2. ... Ke7            3. Df6‡  
 1. ... Kc4            2. g3, ~              3. D/S/L ‡
65. 1. Da3, Tb4        2. Dc3†, Kxc3        3. Lf6‡  
                           2. ... Kc5            3. De5‡  
 1. ... Ke5            2. Dc5†, &c.         3. De7‡  
 1. ... Txd8          2. Se2†, Ke5         3. De7‡
66. 1. Df2, Lg4        2. Dxf4†, Kxf4        3. Ld6‡  
                           2. ... Kd4            3. Dd6‡  
 1. ... Lg2/Lf1       2. d4†, cxd3 e.p.    3. Db2‡  
                           2. ... Kf6            3. Dxf4‡  
 1. ... Sd3/Se2/Sg2   2. Lg7†, f6          3. Dxf6‡  
                           2. ... Kd6            3. c8S‡  
 1. ... Se6            2. Df6†, Kxf6        3. Sxd7‡  
 1. ... Sd5            2. d4†, cxd3 e.p.    3. Sexd3‡  
 1. ... ~              2. Dd4†/Sf3†, &c.
67. 1. Dh8, Lxd5      2. Kh6, ~             3. Df8/Dd4 ‡  
                           [ 2. ... Lc4! ]  
 1. ... Kxd5          2. Kg6, ~             3. D ‡  
 1. ... Kd6            2. Df8†, Kxd5        3. S1c3‡
68. 1. Dh2, Ke4        2. Ld5†, Kxd5        3. Dd6‡  
                           2. ... Kf5/Kd3        3. Le4‡  
 1. ... Sb4            2. Dd6†, Ke4         3. Ld3‡  
                           2. ... Kxc4            3. T×b4‡  
                           2. ... Sd5†            3. Dxd5‡  
 1. ... ~              2. Df4†/Dd6†, &c.
69. 1. Dg5, Lxg5†    2. Kc3, ~             3. S ‡  
 1. ... Ld6            2. Sxd6†, Ke6        3. f8S‡  
 Andere Varianten leicht.
70. 1. Lf2, Ke7        2. Le1, ~             3. L ‡
71. 1. Ld5, Kxe5      2. Tgg5†, K~         3. Ld2‡  
 1. ... d6            2. Tgg5, &c.
72. 1. Lf7, Lg2        2. Te4, ~             3. T/S ‡  
 1. ... Kc4            2. Se3†, Kb3         3. Sc5‡  
 1. ... dxe2          2. Sf4†, &c.  
 1. ... dxc2          2. b3, &c.

- |     |   |  |   |
|-----|---|--|---|
| 73. | 1. Ld6, Dg5<br>1. ... Df8                                     | 2. Kg1, ~<br>2. Dc8†, Kf7  | 3. D/S †<br>3. D×e6‡                                |
| 74. | 1. Kc7, Td3<br><br>1. ... Sg5/~                               | 2. e3, T×e3<br>2. ... S~<br>2. ... ~<br>2. D×d5†, &c.                        | 3. Sf2‡<br>3. S(×)g5‡<br>3. D/S †                   |
| 75. | 1. Ka1, Lg2<br>1. ... f5<br><br>1. ... Lf3                    | 2. De2, ~<br>2. Se6, K×e6<br>2. ... ~<br>2. Dd3†, &c.                        | 3. D †<br>3. D×f5‡<br>3. S×c7‡                      |
| 76. | 1. Lb7, T×b7<br>1. ... Ta8                                    | 2. Da8, T~<br>2. Kf2, &c.  | 3. Dh1‡   |
| 77. | 1. Tc7, K×c7<br>1. ... K×e5<br>1. ... Sd7/Se6/b6              | 2. Tec5†, K~<br>2. Tcc5†, &c.<br>2. Tec5, ~                                  | 3. T/S †<br>3. S/L †                                |
| 78. | 1. Sh7, Se8<br><br>1. ... Kf5/Kd5<br>1. ... Sf7<br>1. ... Sg6 | 2. Dd7†, K×d7<br>2. ... Kd5<br>2. Se7†, &c.<br>2. Sf8†, &c.<br>2. D×g6†, &c. | 3. Sf8‡<br>3. Df5‡                                  |
| 79. | 1. Sc4, K×d5<br>1. ... S×h6<br>1. ... c2<br>1. ... Ld3        | 2. Dc6†, K×c6<br>2. T×e5†, Kf4<br>2. Sd2†, ~<br>2. exd3†, &c.                | 3. Se7‡<br>3. e3‡<br>3. Se7/e4 †                    |
| 80. | 1. Ka7, Ke5   | 2. Da8, K×f6<br>2. ... K×d6<br>2. ... Kd4<br>2. ... Kf4                      | 3. Dh8‡<br>3. S×f7‡<br>3. Sf3‡<br>3. Sd3‡           |
| 81. | 1. h4, Tf6<br><br>1. ... Tg6<br><br>1. ... Tc6                | 2. Dd7, Tf4<br>2. ... Td6<br>2. D×g6, Kd5<br>2. ... Kf4<br>2. K×c6, ~        | 3. De6‡<br>3. Df5‡<br>3. De6‡<br>3. Df5‡<br>3. Df5‡ |
| 82. | 1. Dg3, Ka4<br>1. ... Ka6<br>1. ... Lf3/Lc2<br>1. ... Lb3     | 2. Dc3, ~<br>2. D×c7, ~<br>2. Dg8, ~<br>2. D×c7†, Ka4<br>2. ... Ka6          | 3. Db4‡<br>3. Db6‡<br>3. D †<br>3. Da7‡<br>3. Db6‡  |



83. 1. Df1, Lb2      2. Db1, ~      3. D ♯  
 1. ... Lc3/Ld4    2. Dd3, ~      3. D ♯  
 1. ... Le5/Lf6    2. Df5, ~      3. D ♯  
 1. ... g3          2. Sg6†, h×g6    3. Dh3♯  
 1. ... h6/h5      2. Db1, &c.
84. 1. Sg4, g×h5    2. Sh2, Kf2      3. Dd4♯  
                          2. ... Kh1      3. Sf3♯  
                          2. ... g×h2      3. De1♯  
 1. ... g5          2. D×g3, &c.  
 1. ... Kf1          2. S×g3†, &c.
85. 1. Dh4, ~      2. ~×D, ~      3. D/S ♯  
 [ 1. Ld6† ]
86. 1. Se6, Kc6      2. Dc5†, d×c5    3. Sc7♯  
                          2. ... Kd7      3. Dc7♯  
 1. ... Kc4          2. Db6, &c.  
 1. ... d2          2. Dc3, &c.  
 1. ... L~          2. D×e4†, K×e4    3. Lg2♯
87. 1. Dh7, Kd4    2. Te3, ~      3. D/S ♯  
 1. ... Kd6          2. Ta6†, &c.  
 1. ... Kc6          2. Te6†, &c.  
 1. ... L~          2. Dd3†, Kc6      3. Ta6♯  
 1. ... S~          2. D(×)e4†, K~    3. Sf5♯
88. 1. Tg1, Kf5      2. Sf2, g×f2      3. g4♯  
                          2. ... h×g1      3. Dh7♯  
 1. ... h×g1D      2. Sf2†, Kf5      3. D ♯  
                          2. ... g×f2      3. Dh7♯  
 1. ... Kd3          2. Ta1, Kc4      3. Df1♯  
                          2. ... Ke4      3. Db1♯  
                          2. ... K~        3. Dd1♯
89. 1. Tf4, ~      2. L zieht so, daß, wie auch Schwarz spielt 3. Ta4♯
90. 1. De6, D×e6    2. Td1†, Ke5      3. f4♯  
 1. ... Le5          2. Dd7†, D×d7    3. Td1♯  
                          2. ... Ld6†      3. D×d6♯  
 1. ... Tb6/Td8    2. Td1†, D×d1    3. De4♯
91. 1. Tf2, Th1      2. Da1, ~      3. D/T ♯  
 1. ... L×f2          2. Df3, &c.  
 1. ... g4            2. Th2†, &c.
92. 1. Tc6, K×d5    2. Lb6, Le5      3. Dh1♯  
                          2. ... K×c6/~    3. De6♯

1. ... Kf5            2. Dh4, ~            3. Dh5/De4 †  
 1. ... Lg7            2. Dh1, ~            3. D †
93. 1. T×e7, f5        2. D×a5†, K×a5     3. Ta7‡  
                           2. ... b×a5            3. Th6‡  
 1. ... a4/b4        2. Dfi(†), &c.
94. 1. Se5, K×e5        2. Le3, Kf6            3. Ld4‡  
                           2. ... L×e3            3. Sc6‡  
                           2. ... ~                3. D †  
 1. ... K×c5        2. Sd7†, &c.  
 1. ... L×e5        2. Df7, &c.  
 1. ... L×d2/Le3    2. S7c6†, &c.  
 Andere Varianten ähnlich.
95. 1. Sa2, K×f3        2. Td3†, Ke2            3. Sc1‡  
                           2. ... Kf4                3. Dg3‡  
 1. ... e5            2. L×e4, f×e4        3. Tf7‡  
 1. ... e×f3        2. Td3, &c.  
 1. ... Ke5        2. Dg3†, &c.
96. 1. Th3, K×h3        2. Df5†, K~            3. Lf2‡  
                           2. Le3†, &c.  
 1. ... Kf4            2. Dd7†, &c.  
 1. ... d5            2. Dfi, &c.  
 1. ... e3
97. 1. c4, Sg2            2. Lb1, S~            3. Db7‡  
                           2. ... ~                3. D/L †  
 1. ... Sc2            2. Dh5, &c.  
 1. ... Sf3            2. D×f3, &c.  
 1. ... Sd3            2. e×d3, &c.
98. 1. Sf5, Kd5        2. De6†, K×e6        3. L×c4‡  
                           2. ... S×e6            3. Lg2‡  
 1. ... T~/P~        2. L×c4, ~            3. De3‡  
 1. ... S×d7        2. De3†, Kd5        3. Lg2‡  
 Andere Varianten ähnlich.
99. 1. Dh1, K×d5        2. g3, Kc6            3. Tf7‡  
                           2. ... Ke4                3. Te3‡  
                           2. ... ~                3. Tf5‡  
 1. ... T×f3            2. g×f3†, &c.  
 Andere Varianten ähnlich.
100. 1. Dd8, L×d8        2. Sf8, ~                3. Se6‡  
                           2. Sh6, ~                3. Sf5‡  
 1. ... S×d8        2. Sf8, ~                3. Sf5‡  
 Andere Varianten leichter.

101. 1. Dd8, K×b4    2. Da5†, K×a5    3. Sc6‡  
       2. ... K×c4    3. Dc3‡  
       1. ... K×c4    2. D×d5†, &c.  
       1. ... a2      2. Sdc2, &c.
102. 1. Sc2, L×c1    2. Da1, ~        3. D/S/L ‡  
       1. ... Ke4      2. De5†, &c.  
       1. ... Kc6      2. Dd4, &c.  
       Andere Varianten leichter.
103. 1. Dc3, K×d6    2. Dc5†, K×c5    3. S×e4‡  
       1. ... e3        2. D×d4†, &c.  
       1. ... b×c2     2. Sg4†, &c.  
       1. ... K×f6     2. D×d4†, &c.
104. 1. Sf3, Ke4      2. Dg6†, Kf4/K×f3 3. Dg4‡  
       2. ... Kd5      3. Se3‡  
       1. ... Kc4      2. Da6†, Kd5     3. Sc3‡  
       1. ... Ke2      2. De3†, &c.  
       1. ... Kc2      2. Dd2†, &c.  
       1. ... c4        2. Sc3, &c.
105. 1. Tf3, Sd3      2. e×d3†, K×f3    3. Dh3‡  
       2. ... K×d4     3. Dh8‡  
       1. ... Sc6       2. Dg4, ~        3. D/T ‡  
       1. ... Th6       2. Te3†, &c.  
       1. ... Tc5       2. S×d6†, &c.  
       Andere Varianten leicht.
106. 1. Tc4, K×d5    2. Dh1†, K×c4    3. Dc6‡  
       2. ... Ke5      3. Tc5‡  
       2. ... Le4      3. D×e4‡  
       1. ... L×c4     2. Sf6, ~        3. De4/Df4‡  
       1. ... Lf5       2. Td4, D×d4    3. D×d4‡  
       2. ... ~        3. Df4/Df6‡  
       Andere Varianten leicht.
107. 1. e7, K×d6      2. Tcc6†, K×c6    3. Db6‡  
       2. ... K×e7     3. Df8‡  
       2. ... Ke5      3. De3‡  
       1. ... T~×c7    2. Df6†, Ke4    3. Te6‡  
       1. ... d2        2. Tc4, &c.  
       1. ... Lf7       2. Tf6, &c.  
       1. ... L×g4     2. De3†, &c.
108. 1. Dh3, g1D     2. Dc8, Lc4      3. Dh8‡  
       2. ... ~        3. Dc5‡

1. ... Lb5            2. Sxb5†, &c.  
 1. ... Le2            2. Sxe2†, &c.  
 1. ... Kc4            2. Dc8†, &c.
109. 1. Dh1, e5        2. Kc3, Kh6            3. Dc1‡  
       2. ... ~            3. Dh4‡  
       1. ... Kh6        2. Lf3, &c.
110. 1. Tc1, Sxf3      2. Tf1, ~              3. L ‡  
 Auf 1. ... Sd~, schlägt im 2. Zuge den S und 3. L Matt.
111. 1. Lg5, Sxg5        2. d4†, Kxf4            3. Sh5‡  
       2. ... Kd6            3. Sf5‡  
       1. ... Sxd2        2. d4†, Kd6            3. Sf5‡  
       1. ... exd2        2. Te4†, Kd6            3. Le7‡  
       1. ... Lf8            2. Lf6†, &c.  
       1. ... Kd6            2. Sf5†, &c.
112. 1. Dg5, Sxh2      2. Sc4, ~              3. Dd5‡  
       1. ... Se3            2. Dxe3†, Kxe3        3. Sxc2‡  
                               2. ... Kxe5            3. Dc5‡  
 Andere Varianten leicht.
113. 1. Dd1, Le3        2. Txf4†, Kxf4            3. Dg4‡  
       2. ... exf4            3. Dd5‡  
       2. ... Lxf4            3. Dd3‡  
       1. ... Kxf5        2. Dd7†, Kf6            3. Df7‡  
                               2. ... Ke4            3. Dd3‡
114. 1. Sg3, exd5        2. Lxd7, ~              3. Lb4/Lf4 ‡  
       1. ... Lxc7/Lxe7    2. Texd7†, K~        3. L ‡  
       1. ... Kxd5        2. Texd7†, Ke5        3. Tc5‡  
       1. ... Ke5            2. Lf4†, Kxd5            3. Texd7‡  
       1. ... e5            2. Tcxd7†, &c.
115. 1. Sc7, Sf4        2. De5†, Kxe5            3. Lc3‡  
                               2. ... K~            3. Dc3‡  
       1. ... Kd3        2. Db3†, Kd4            3. Dc3‡
116. 1. Te2, Lxe2      2. Td3, Kxd3            3. Lf5‡  
                               2. ... Lxd3            3. Sd6‡
117. 1. Tb7, Lxb7      2. Sb4, ~              3. Te3/Ld5/Lb1 ‡  
       1. ... Kf3            2. Sf2†, &c.  
       1. ... Sxc6        2. Sdc5†, &c.  
       1. ... Kd5            2. Sb4†, &c.  
       1. ... Txc3        2. Sf2†, Kf3            3. Ld5‡  
 Andere Varianten entsprechend.

118. 1. Teb3, c×b3    2. Lb2, ~    3. D/T/L †  
 1. ... c3    2. T3b7, &c.
119. 1. Td5, K×d5    2. S×c4, ~    3. L †
120. 1. Tga5, K×e3    2. Scd1†, Kf3    3. Tf2‡  
 2. ... Kd3    3. Td5‡  
 2. ... Kd4    3. Td2‡  
 1. ... K×c3    2. Sedi†, &c.  
 1. ... Kd3    2. S~d1, &c.  
 1. ... b×c3    2. Sf5†, &c.  
 1. ... f×e3    2. Se2†, &c.  
 1. ... b3    2. Sedi  
 1. ... f3    2. Scd1
121. 1. Kc4, S×d2†    2. Kb5, ~    3. D/S †  
 1. ... Sc3    2. Sf7†, L×f7    3. Lf4‡  
 1. ... Lf5    2. D×d3†, K×e5    3. Dd4‡  
 1. ... ~    2. Lb4†, &c.
122. 1. Df3, e×f3    2. Sc6†, Ke4/Kf5    3. Lb1‡  
 1. ... e×d5    2. Sc6†, Ke6    3. c×d5‡  
 1. ... Sb8    2. Dg3†, &c.
123. 1. Te3, L×e3    2. Sf3†, K×e4    3. Lb1‡  
 1. ... f×e3    2. Sg6†, K×e4    3. Lb1‡  
 1. ... d×e4    2. Sf3†, Kf5    3. Le6‡
124. 1. Ld3, Tf4    2. Da5†, K×a5    3. Ta6‡  
 1. ... T×f8    2. De4†, K~    3. D/T †
125. 1. D×f7, K×d5    2. Sg5, ~    3. Dd3/De6/Db7/Dd7 †  
 1. ... K×f3    2. T×d4, ~    3. D/T †  
 1. ... e×d5    2. De6†, &c.
126. 1. g7, Lc4    2. Ld3†, Ka2    3. L×c4‡  
 1. ... Ld5    2. Le4†, Ka2    3. L×d5‡  
 1. ... Le6    2. Lf5†, Ka2    3. L×e6‡  
 1. ... Lf7†    2. Lg6†, Ka2    3. L×f7‡  
 1. ... Lg8    2. Lh7†, Ka2    3. L×g8‡  
 1. ... Lc2    2. L×c2†, Ka2    3. g8D‡  
 1. ... Ld1    2. Lc2†, Ka2    3. g8D‡  
 1. ... La2    2. Lc2†, Lb1    3. D×b1‡
127. 1. e3, Td4    2. S×d4, ~    3. Db1‡  
 1. ... T×e3    2. Db1†, Ke2    3. Sd4‡  
 1. ... Tc3    2. S×c3, ~    3. Df5‡  
 1. ... Td2    2. Df5†, ~    3. D/S †

- |      |  |               |                     |
|------|--|---------------|---------------------|
|      | 1. ... T~                              | 2. D×c4†, Td3 | 3. D×d3‡            |
|      | 1. ... Ke2                             | 2. Dh5†, Kf1  | 3. Df3‡             |
|      | 1. ... h3                              | 2. Sg3†, Kf2  | 3. Df5‡             |
| 128. | 1. Le7, K×e5                           | 2. L×e4, K×e4 | 3. D×e6‡            |
|      |  | 2. ... T×e4   | 3. D×b5‡            |
|      |  | 2. ... ~      | 3. Dd5/Df5/D(×)d4 ‡ |
|      | 1. ... ~                               | 2. Lh3†, &c.  |                     |
| 129. | 1. Ke8, Ld2 in der Diagonale a1 bis h8 |               |                     |
|      |  | 2. Sb6†, Kd4  | 3. De3‡             |
|      | 1. ... Le5/L~                          | 2. D ‡        |                     |
|      | 1. ... c5                              | 2. Db7†, Ke6  | 3. Df7‡             |
|      | 1. ... g3                              | 2. f3, &c.    |                     |
| 130. | 1. Tg3, S×h6                           | 2. Dd8†, Ke5  | 3. Ld6‡             |
|      |  | 2. ... Se7    | 3. Lg7‡             |
|      | 1. ... S8e7                            | 2. Lg7†, K×g7 | 3. Dh8‡             |
|      | 1. ... e3                              | 2. Le7†, &c.  |                     |
|      | 1. ... Ke5                             | 2. D×e4†, K~  | 3. Te3/D ‡          |
|      | 1. ... a1D†                            | 2. D×a1†, e5  | 3. Df1‡             |

## 3. Lösung der vierzügigen Aufgaben

- |     |                   |                   |                  |               |
|-----|-------------------|-------------------|------------------|---------------|
| 1.  | 1. Sg3, Lg5       | 2. Kh5, Ld8       | 3. Df4†, K×f4    | 4. Ld6‡       |
|     |                   | 2. ... Sh3        | 3. ... Ke6       | 4. Df5‡       |
|     |                   | 2. ... Kf6        | 3. De4†, Kf6     | 4. De7‡       |
|     |                   | 2. ... Ke6        | 3. Dd7, &c.      |               |
|     | 1. ... Ke6        | 2. De8†, &c.      | 3. Dc6†, &c.     |               |
| 2.  | 1. Td6, e×d6      | 2. Sf6†, Kd4      | 3. Te5, ~        | 4. f4‡        |
| 3.  | 1. Td7, T×d7      | 2. Sb6†, a×b6     | 3. Dd3, ~        | 4. D×c4/c4 ‡  |
|     | 1. ... Te1        | 2. Le6†, T×e6     | 3. Df5†, Te5     | 4. T×d6‡      |
| 4.  | 1. Tb5, b6        | 2. Lf8, b×a5      | 3. Lc5, K×g5     | 4. Le3‡       |
| 5.  | 1. Dh7, g×h2      | 2. Lf3, T×f3      | 3. De4†, K×e4†   | 4. Sd6‡       |
|     |                   | 2. ... T×h7       | 3. Sa5†, &c.     |               |
|     | 1. ... Le4        | 2. D×e4†, &c      |                  |               |
|     | 1. ... e4         | 2. Dg7†, Sf6      | 3. D×f6†, De5    | 4. D×e5‡      |
| 6.  | 1. Le6, K×e6      | 2. Dc6†, Kf5      | 3. Dd5†, ~       | 4. D(×)e5‡    |
|     | 1. ... f×e6       | 2. Dd8†, Kc6      | 3. b4, e5        | 4. d5‡        |
|     | 1. ... Kc7        | 2. Dc8†, &c.      |                  |               |
| 7.  | 1. Ta5, T×d4      | 2. Te5, K×e5      | 3. De7†, Kd5/Kf5 | 4. Se3‡       |
|     |                   | 2. ... c5         | 3. Te6†, &c.     |               |
|     | 1. ... Te4        | 2. Lc5†, Ke5      | 3. Le7†, &c.     |               |
|     | 1. ... Tg5        | 2. T×g5, &c.      |                  |               |
| 8.  | 1. Se7, D×e7      | 2. Td5†, K×d5     | 3. Db5†, Ke4/Ke6 | 4. Df5‡       |
|     | 1. ... Tc8        | 2. Da5†, &c.      |                  |               |
| 9.  | 1. Tfe8, d2       | 2. Ld8, K×c8      | 3. c6, Kb8       | 4. Lb6‡       |
|     |                   | 2. ... K×e8       | 3. c6, Kf8       | 4. Lg5‡       |
| 10. | 1. Tc3 (Zugzwang) | 2. Tb3 (Zugzwang) |                  |               |
|     | 1. ... c6         | 2. ... Le5        | 3. Dd4†, ~       | 4. Sge4/Se6 ‡ |
|     |                   | 2. ... Lc7        | 3. Sd7†, Kd6     | 4. De6‡       |
|     |                   | 2. ... Lf4        | 3. D×f4, &c.     |               |
|     |                   | 2. ... La7        | 3. Df4, &c.      |               |
|     |                   | 2. ... Sb-        | 3. D(×)d3, &c.   |               |

2. ... Kd6                    3. Dd4†, &c.
1. ... Kb4/Kb5/Kb6    2. Tb3†, &c.
1. ... La7                2. Dd5†, K~                3. Tb3†, &c
1. ... Sb~                2. Txc4†
11. 1. Lb8, Se4            2. Lf3, Kc5                3. Dd6†, Sxd6                4. La7‡
2. ... Kc6                3. Dc7†, Kd5                4. Dd6‡
2. ... Kd4                3. De5†, Kd3                4. Dd5‡
1. ... f6                2. Dd6†, Ke4                3. Kc2, ~                4. D †
1. ... e2                2. Dd6†, Ke4                3. Lc2†, &c.
1. ... Kc6                2. Dd6†, &c.
12. 1. Sc1, La5            2. Le7, Txb6                3. De3†, Kxe3                4. Lxc5‡
3. ... Sxe3                4. Lf6‡
1. ... Txb6            2. Lc6, Se5                3. Lf6, ~                4. Dd3‡
- Andere varianten ähnlich.  
[ 1. Sf2 ]
13. 1. Lc2, a3            2. Da7, Kxe5                3. De3†, Kf6                4. Lh4‡
1. ... Kxe5            2. Lg3†, Kd4                3. Dc7, &c.
1. ... d4                2. Dh4†, Kxe5                3. De4†, &c.
1. ... Lxe5            2. Dh4†, Kf3                3. Df2†, &c.
14. 1. Sb5, g2            2. Sd7, b1D                3. Dc6†, Kxc6                4. Sb6‡
2. ... Ke6                3. ... Sxc6                4. Lf7‡
2. ... Lc4                3. Dxf5†, Kxf5                4. Sd4‡
2. ... Sb~                3. Dxf5†, ~                4. Sb6‡
1. ... b1D            2. Sc7†, Kd6                3. D(×)c5†, &c.                4. Sd3/S(×)f7 †
2. ... Kxe5                3. Lf4, ~                4. Lf4‡
1. ... Se6            2. Dxf5, Sd4/Sed8            3. Dc3†, Kd6                3. De4†, &c.
1. ... Ke6            2. Ld7†, &c.
1. ... Kxe5            2. Dc3†, &c.
1. ... Lc4            2. Dxc4†, &c.
1. ... b1S            2. Sd7, &c.
15. 1. Tb7, Txe3            2. Txd7†, Kxc5/Kc6. Ld5, ~                4. Se6‡
1. ... Ke7            2. Txd7†, Kxf8/Ke8    3. Lf7, ~                4. Se6‡
1. ... Kc6            2. Txd7, &c.
1. ... e4            2. Txd7†, &c.
16. 1. Lh7, cxd5            2. Te6†, Kxe6                3. Sc6†, K~                4. Dxe7‡
1. ... De6            2. Txc3†, Dg6                3. Sd7, &c.
1. ... Txd5            2. Sc4, Tf3/Sf3                3. De4†, Kxe4                4. Tg4‡
2. ... Kf4                3. Tg4†, &c.



17. 1. Sf5, gxf5      2. Kg3, f4†      3. Kh3, e3      4. Lxf3‡  
 1. ... Lf1      2. Sxe7†, Kh6      3. T×g6†, Kh7      4. Th5‡
18. 1. Le6, Sxe6      2. Sd4, Sxd4      3. Lf2, S~      4. b7‡  
 2. ... Sc5      3. Sb5, S~      4. b7Sc7‡  
 1. ... Sb7      2. Kc7, S~      3. Ld5†, &c.
19. 1. Dc1, e1D      2. Lxc5†, Sxc5      3. Kxc5, ~      4. Sc4/Dxc3 ‡  
 1. ... bxc1S      2. Kd5, Sf6†      3. Kxe6, ~      4. Sc4‡  
 2. ... c6†      3. Kd6, ~      4. S(x)c4‡  
 2. ... Sf4†      3. Kc6, ~      4. Sc4‡  
 1. ... bxc1D      2. Lxc5†, &c.
20. 1. Tc8, Ke4      2. Tg3, Kd4      3. Tgc3, e4/Ke4      4. T8c4‡  
 2. ... Kf4      3. Tcg8, ~      4. T8g4‡  
 [ 1. Tfe3 ]
21. 1. Lxa7, Kxd6      2. Sc4†, Kc7      3. Db8†, Sxb8      4. Lb6‡  
 2. ... Kd5      3. De4†, Sxe4      4. Le6‡  
 1. ... Ke5      2. Sc4†, Kf4      3. Se6†, Sxe6      4. Le3‡  
 2. ... Kd4      3. Dd3‡  
 2. ... Kd5      3. De4†, Sxe4      4. Le6‡  
 1. ... Kd4      2. De4†, ~      3. Sb1 ‡  
 1. ... Sxf6      2. Sc4, Kxc4      3. Dc2†, Kb4      4. Sc6‡  
 1. ... Sb6      2. Dxb6, &c.  
 1. ... Sf8      2. Sc4, &c.  
 1. ... Sb8      2. Sf7, Sc6      3. Db3†, ~      4. Dd3/e4 ‡  
 2. ... Sb~      3. Dd1†, ~      4. D/S ‡  
 1. ... Se5      2. De4†, Sxe4      3. Le6†, Kxd6      4. Sb5‡
22. 1. Lc3, Lxf5      2. Dc8, Kd5      3. Dc4†, Kxc4      4. Se3‡  
 2. ... Kf7      3. D×g8†, K×g8      4. Sh6‡  
 2. ... ~      3. Sdf6†/Sde5†, &c.  
 1. ... Kxf5      2. Sc5, Sxh3/Sf6/h1D      3. Se3†, Kxf4      4. Se6‡  
 1. ... Sf6      2. Sh6, Kxd7      3. Dc6†, &c.  
 1. ... h1D      2. Sf8†, Kxf5      3. Se3†, Kxf4      4. Se6‡  
 1. ... Sxh3      2. Dd5†, Kxd7      3. Dc6†, &c.  
 1. ... Le8      2. Sc5†, &c.
23. 1. Dc7, f2      2. Dxf4, e2      3. Le1, Kxe1      4. Dc1‡  
 2. ... Ke2      3. Dg4†, &c.  
 1. ... Kf2      2. Dc2†, e2      3. Dd2, Kf1      4. De1‡
24. 1. Dh5, g6      2. Sb8, g×h5/Te8      3. Sd7, ~      4. c4‡  
 2. ... Kc5      3. Sd7†, &c.  
 2. ... ~      3. Dxf3†, &c.  
 1. ... Kc5      2. Df7, Kb6      3. Dc4, &c.

- |     |                          |                  |                     |             |
|-----|--------------------------|------------------|---------------------|-------------|
|     |                          | 2. ... d5        | 3. De7†, Kb6        | 4. Db4‡     |
|     | 1. ... Te8               | 2. Df7†, Te6     | 3. Sb4†, &c.        |             |
| 25. | 1. Se7, c×b2             | 2. Db5, Sb6      | 3. Dc5†, K×c5       | 4. Se6‡     |
|     | 1. ... K×e5              | 2. Dd7, K×f4     | 3. Df5†, S×f5       | 4. Sg6‡     |
|     |                          | 2. ... g×f4      | 3. Dd5†, &c.        |             |
|     |                          | 2. ... Sb6       | 3. Sc6†, &c.        |             |
|     |                          | 2. ... Tg1       | 3. De6†, &c.        |             |
|     | 1. ... ~                 | 2. Db5           |                     |             |
| 26. | 1. Sh3, Sd3              | 2. Sf4†, S×f4    | 3. Da1, ~           | 4. c4/Da5 ‡ |
|     | Andere Varianten leicht. |                  |                     |             |
| 27. | 1. Df5, Ld5              | 2. Sd×e5†, Kc5†  | 3. Sc4, K×c4        | 4. Dc2‡     |
|     |                          |                  | 3. ... K×c6 4. Dc8‡ |             |
| 28. | 1. De8, Kg5              | 2. Dh5†, K×h5    | 3. S×e4, ~          | 4. S/L/g4 ‡ |
|     |                          | 2. ... Kf4       | 3. Sc4, &c.         |             |
|     | 1. ... h5                | 2. K×h4, g5†     | 3. K×h5, ~          | 4. D(×)e4 ‡ |
| 29. | 1. Df2, e5               | 2. Df1, c5       | 3. T×h5†, g×h5      | 4. Da6‡     |
|     |                          |                  | 3. ... L×h5         | 4. Df8‡     |
|     |                          |                  | 3. ... K×h5         | 4. Dh3‡     |
|     |                          | 2. ... g×h4      | 3. Dc1†, &c.        |             |
|     | 1. ... g×h4/g4           | 2. De3†, g5      | 3. Dd4, e5          | 4. Dd6‡     |
|     |                          |                  | 3. ... ~            | 4. Dg7‡     |
|     | 1. ... c5                | 2. D×f3, g×h4/g4 | 3. Df4†, g5         | 4. Df6‡     |
| 30. | 1. b3, L×b3              | 2. Df7, L×f7     | 3. Td1, ~           | 4. Td4‡     |
|     |                          | 2. ... Kd3       | 3. D×b3†, &c.       |             |
|     | 1. ... L×c6              | 2. Td1, L×b7     | 3. Lf6, ~           | 4. Td4‡     |
|     | 1. ... Kd3               | 2. Dh7†, &c.     |                     |             |
|     | 1. ... Kd5               | 2. Td1†, &c.     |                     |             |
| 31. | 1. Da3, Db8†             | 2. Kg7, Db6      | 3. Kh7, ~           | 4. D ‡      |
|     | 1. ... Dd4†              | 2. c×d4, &c.     |                     |             |
| 32. | 1. Df4, Kd4              | 2. Dg3, Kc4      | 3. De3, Kb5/d2      | 4. S×d6‡    |
|     |                          |                  | 3. ... Kd5          | 4. Sd2‡     |
|     |                          |                  | 3. ... d5           | 4. Dc5‡     |
|     |                          | 2. ... Kd5       | 3. D×d6†, &c.       |             |
|     |                          | 2. ... d5        | 3. Df2†, &c.        |             |
|     |                          | 2. ... d2        | 3. Dc3†, &c.        |             |
|     | 1. ... Ke6               | 2. Sc5†, d×c5    | 3. Lc6, ~           | 4. Df6‡     |
|     |                          | 2. ... Ke7       | 3. Df6†, Ke8        | 4. Lc6‡     |
|     | 1. ... d2                | 2. S×d6†, Kc5    | 3. De5†, Kb6        | 4. Sc8‡     |
|     |                          | 2. ... Ke6       | 3. Lc6, ~           | 4. Df6‡     |

1. ... Kc6      2. Dxd6†, Kb7      3. Sc5†, K~      4. D/L †
33. 1. Ld2, Kxd2      2. Lf5, Ke3      3. Dh4, ~      4. Df2/De1 †  
     2. ... Kc1/Kd1      3. Da1†, Kd2      4. De1 †  
     2. ... c4      3. Db2†, K~      4. Lg4/Df2 †  
     1. ... Kc2      2. Dc3†, Kb1      3. Lc1, ~      4. Db2 †  
     1. ... Kc4      2. Le2†, Kd5      3. Le3, Ke4      4. De6 †  
     2. ... Kb3      3. ... c4      4. Lf3 †  
     3. Da1, c4      4. Ld1 †  
     3. ... Kc2      4. Da2 †
34. 1. Dh5, Kxe4      2. Lc4, g5      3. De2†, Kf5      4. De6 †  
     2. ... f3      3. Dg5, &c.      4. De6 †  
     1. ... f3      2. Dg5†, Kxe4      3. Lc4, &c.
35. 1. Ka2, e3      2. Ta1, e2      3. Sb1, ~      4. S(x)d2 †
36. 1. Sxc4, h5      2. Df6, h4      3. Dc6†, Kf5      4. Se3 †  
     1. ... Kd5      2. Db6, Ke4      3. Dc6†, Kf5      4. Se3 †  
     2. ..., B~      3. Dd6†, &c.  
     1. ... g4/f6      2. Df6, &c.  
     [1. ... g4!]
37. 1. Lxd5, cxd5      2. Lf8, c6      3. Te7, Kxc5      4. Te4 †
38. 1. Dg1, Kxe4      2. Df2, f5      3. Dg3, f4      4. Dd3 †  
     1. ... f5      2. Df2†, &c.  
     1. ... Kf5      2. Kd5, Kf4      3. Dg3†, Kf5      4. Sd6 †  
     1. ... Kf3      2. Kd3, Kf4      3. Dg6, &c.
39. 1. Txd4, Txd4      2. Sf2, T~      3. ~xT, gxh6      4. L †  
     1. ... Tc3†      2. Kb7, Tc8      3. Kxc8, gxh6      4. Lf6 †
40. 1. Td7, fxe3      2. Lb6, Ke5      3. Lc7, Kxd4/Kd5      4. Sb7 †  
     3. ... Kf6      4. Sxe4 †  
     3. ... Kf4      4. Sf7 †  
     3. ... Tf8†      4. Se8 †  
     3. ... Tf6      4. Sxc4/Sf7 †  
     1. ... c2/Sxe3      2. Sc8†, Ke5      3. Se7, Kf6      4. Sec6 †  
     3. ... fxe3      4. Sxg6 †  
     3. ... ~      4. Sec6/Sxg6 †  
     2. ... Kc5      3. Le7 †  
     1. ... Lh4      2. Lb6, Ke5      3. Sxc4†, Kf6      4. Ld8 †
41. 1. Sf4, Sf7/Sh7      2. Sd3†, Sg5      3. Se5, fxe5      4. Lxg5 †  
     1. ... Sf7/Sh7      2. Se6†, Sg5      3. Sxg5, fxg5      4. Lxg5 †  
     1. ... Sf7/Sh7      2. Sh3†, Sg5      3. Sxg5, fxg5      4. Lxg5 †  
     1. ... Sf3/Se4      2. Sd3†, Sd2      3. Sb2, cxb2      4. Lxd2 †

2. ... Sg5, wie vorher

- |     |   |   |  |   |
|-----|---|---|--|---|
| 42. | 1. Te4, K×e4<br>1. ... Kd2  | 2. Se5, K×e5<br>2. Se5, K~  | 3. Sf6, K×f6<br>3. Sc4(†), K~  | 4. Ld4‡<br>4. T ‡   |
| 43. | 1. Se4, f×e4<br>1. ... Kg4<br>1. ... f2<br><br>1. ... e2<br>1. ... g2   | 2. Tf1, e2<br>2. Dh5†, K×h5<br>2. Dh5, g2<br><br>2. Dc1†, &c.<br>2. Dh2†, &c.   | 3. T×f3†, e×f3<br>3. Sf6†, Kh4<br>3. Dh3, ~<br>3. D×g5†, &c.   | 4. Dc1‡<br>4. Th1‡<br>4. D ‡  |
| 44. | 1. Db3, S×a6<br><br>1. ... S×g6<br><br>1. ... Sf5<br>1. ... Sc6<br>1. ... Sed5<br>1. ... Sb5/Se6<br>1. ... c4<br>1. ... Ke4/Ke2 | 2. Df7, Sf5<br>2. ... S×g6<br>2. ... Lf4†<br>2. ... Ke4<br>2. Df7, Sf4/Se5/Se7<br>2. ... S×a6<br>2. Lf1†, Ke4<br>2. Lg2, Se6/Sb5<br>2. Dc4†, K×c4<br>2. T(x)e6, Le5<br>2. Lf1†, Ke4<br>2. Dc4†, &c. | 3. Lf1†, Ke4<br>3. Df1†, Ke4<br>3. D×f4, &c.<br>3. Lg2†, Kd3<br>3. D×f4, &c.<br>3. Df1†, Ke4<br>3. Lg2†, Kd3<br>3. Dd5†, &c.<br>3. Lf1†, Kb3<br>3. T×e5, &c.<br>3. D×c4†, K~ | 4. Db7‡<br>4. Df5‡<br>4. Df1‡<br>4. Df5‡<br>4. Sf4‡<br>4. Sa1‡<br>4. Df4‡ |
| 45. | 1. Te1, Tb8<br><br>1. ... Tf8<br>1. ... d5<br>1. ... d6   | 2. Lb7, L×b7<br>2. ... T×b7<br>2. S×d7†, Kd5<br>2. T×e2, &c.<br>2. Ld4†, &c.  | 3. Dd4†, S×d4<br>3. Dh2†, ~<br>3. D×e4†, K×e4  | 4. e×d4‡<br>4. Db2/Dh8 ‡<br>4. Lb7‡                                       |
| 46. | 1. Sa1, Lf8<br><br>1. ... Kd5<br>1. ... Sf3<br>1. ... e2  | 2. Lf5†, S×f5<br>2. ... Kd5<br>2. Dc1, Ke4<br>2. L×f3†, Kf5<br>2. D×e2†, &c.  | 3. Dg2†, K×d3<br>3. Dc1, ~<br>3. Dc6†, K×d3<br>3. Dh3†, K~   | 4. Dc2‡<br>4. D ‡<br>4. Dc2‡<br>4. Dh5‡                                   |
| 47. | 1. Lf3, L×f3<br><br>1. ... g5   | 2. d5†, L×d5<br>2. ... c×d5<br>2. Lh5, &c.  | 3. Se2, ~<br>3. Sb5, &c.   | 4. S ‡  |
| 48. | 1. Lc6, d×c6<br>1. ... e×d5<br><br>1. ... d2<br>1. ... K×c6<br>1. ... Kd4   | 2. Se3, Kd4<br>2. La4, d4<br>2. ... Kd4<br>2. La8, Kd4<br>2. Se7†, &c.<br>2. Db4†, &c.  | 3. Df4†, K~<br>3. Dc7†, Kd5<br>3. Df4†, &c.<br>3. Db4†, K~   | 4. Db4‡<br>4. Lb3‡<br>4. D ‡  |

1. ... La2            2. La8, &c.  
[ 1. Dc7† 1. Sb6 ]
49. 1. Tc1, L×c1      2. e4, d×e4            3. Sd5, K×d5            4. Lg8‡  
3. ... ~            4. S ‡  
2. ... d×e3 ep      3. Se2, ~            4. S ‡  
1. ... d×c3            2. Tf1, &c.
50. 1. h5, S×d4            2. Lc5†, K×c5            3. Da3†, Kb6            4. Da7‡  
2. ... K×e6            3. Dg8†, K~            4. D ‡  
1. ... c5            2. Sf5†, K×e6            3. Dg8†, &c.            3. Df3†, &c.
51. 1. Dc1, Kb3            2. Lb6, Kb4            3. Dc2, Kb5            4. Db3‡  
3. ... Ka3            4. Lc5‡  
2. ... Ka2            3. Dc2†, &c.            4. Db3‡  
2. ... Ka4            3. Dc3, Kb5            4. Da3‡  
1. ... K×a5            2. Db2, Ka4            3. Kc6, Ka5
52. 1. Tb1, e5            2. Ld8, d3            3. Lb6, Kd4            4. Tb4‡  
1. ... d3            2. La1, e5            3. Tb2, Kd4            4. Tb4‡
53. 1. Tg1, L×b2            2. Tb1, L~            3. Da6†, S×a6            4. Sc6‡
54. 1. d4, L×d4            2. Sf6, K×e5            3. De7†, Kf4            4. Sh5‡  
1. ... T×e8            2. T×e8, L×d4/d6      3. Dg2, &c.            3. Ddg1, &c.
55. 1. Df4, Se2/Sd5      2. Sf6†, S×f4            3. Kh2, ~            4. S(×)f3/S×g6 ‡  
1. ... Kh5            2. Sf7, Se4            3. Sf6†, S×f6            4. D(×)g5‡
56. 1. Te5, h5            2. Tg5, K×g5            3. Le5, K×h4            4. Lf6‡  
3. ... Kh6            4. Lf4‡  
[ 1. Lb4 1. La3 ]
57. 1. Ta7, ~            2. Sa5(†), ~            3. Tb7(†), ~            4. b4‡
58. 1. L×e5, K×e5      2. b3, ~            3. Dh6(†), ~            4. De3‡  
2. ... f6/f5            3. De6† &c.            4. De2‡  
1. ... Kd3            2. D×a5, Ke4            3. De1†, Kd3            4. De3‡  
1. ... g3            2. Db3, g×f2            3. Df3†, K×e5            4. De3‡  
1. ... a4            2. Dh6, &c.

## 4. Lösung der Bedingungsauflagen

1. 1. Ke7, Kf5 2. Lg2, Kg6 3. Le4†, Kh5 4. Kf6, K×h6 5. Kf7, Kh5 6. Kg7, h6  
7. Lg6‡  
3. ... K×h6 4. Kf6, &c.
2. 1. Tg6, Kh7 2. Tg8, Kh6 3. Th8†, Kg6 4. La3, Kf6 5. Th6†, Ke5 6. Td6,  
Kf4 7. Ke7, Ke5 8. Lc1, Kf4 9. Sf2, Ke5 10. Sd3‡
3. 1. Sh6†, g×h6 2. Lh5†, T×h5 3. Df3†, Kg5 4. Ke4, Kg6 5. Df7†, Kg5 6. Sb7,  
Kg4 7. Df3†, Kg5 8. Sd6, Kg6 9. Df7†, Kg5 10. Sc4, Kg4 11. Se3†,  
Kg5 12. Dg8†, Kf6 13. Sd5‡  
[ 1. Le4, Th5 2. Lf3†, Kg5 3. Se6‡ ]
4. 1. Sh4†, Ke5† 2. S2f3†, S×f3† 3. d4†, S×d4† 4. Sf3†, S×f3†  
5. d4†, S×d4† 6. Lf4‡  
5. ... K×d4 6. Lb2‡  
3. ... K×d4 4. Lb2‡

## 5. Lösung der Selbstmatte

1. 1. Lg5, D×g5      2. D×a5†, T×a5/D×a5‡  
    1. ... De2†/Dh2†    2. Db2†, D×b2‡  
    1. ... a4            2. Db3†, a×b3‡
2. 1. Dc4, Tc8        2. Dc5†, T×c5‡  
    1. ... Sc7            2. De6†, S×e6‡  
    1. ... Lc7            2. Df4†, L×f4‡
3. 1. Db5, Ta1        2. D×b2†, L×b2‡  
    1. ... Lh7            2. Se4†, L×e4‡  
    1. ... e2            2. Th6†, L×h6‡  
    1. ... Ld2†         2. Dfi†, T×fi‡
4. 1. La8, Le6† bis La2†  
    1. ... Db2†            2. Df8†, T×f8‡  
    1. ... D×g1/Dg2/Dg3    2. Df6†, D×f6‡  
    1. ... d6/d5            2. Sf7†, L×f7‡  
    1. ... ~                2. De6†, L×e6‡  
                               2. Dh7†, L×h7‡
5. 1. Da7, K×e4        2. Dd7, Ta1‡  
    1. ... K×g4            2. Dh7, Ta1‡  
    1. ... Ke6            2. Se3, Ta1‡  
    1. ... Kg6            2. Sg3, Ta1‡
6. 1. Dg7, T×c7        2. Ke5†, K×a1/Kb2    3. Kd6†, T×g7‡  
    1. ... L×c7            2. Kf6†, K×a1/Kb2    3. Ke7†, Le5‡
7. 1. Sf8, S×f8        2. Lf5, S~            3. L×S, D/B ‡  
    1. ... Sc7            2. Lc6, &c.  
    1. ... Sc5            2. Lc2, &c.  
    1. ... Sd8            2. Ld5, &c.  
    1. ... Sg7            2. Lg6, &c.  
    1. ... Sf4            2. Ta5, &c.
8. 1. K×h4, L×g2        2. L×h6†, D×h6        3. T×f6†, L×f6‡  
    1. ... D×g6            2. Ld6†, Te5            3. Dg3†, D×g3‡  
    1. ... T×c6/Tcf8        2. Se2†, T×e2            3. Dh2†, T×h2‡  
    1. ... T×fi            2. L×h6†, D×h6        3. Dg4†, h×g4‡  
    1. ... Sf2            2. L×h6†, D×h6        3. Dg5†, D/B ‡

9. 1. Se7, Sg7/Sd6 2. Df5†, Sxf5 3. Tg4†, Lf4 4. Tc4†, Sd4† 5. Kd1†, e2‡  
1. ... Sc7/Sf6 2. Dd5†, Sxd5 3. Tc4†, Ld4 4. Tg4†, Sf4† 5. Kf1†, e2‡
10. 1. Ld7†, Sc8 2. Df5, Da3/Dh3/Df2 3. Df3†, Dxf3 4. Lc6†, Dxc6†  
5. Sb6†, Dxb6‡  
2. ... Db3/Dg5 3. Dd5†, Dxd5 4. Lc6†, Dxc6† 5. Sb6†, Dxb6‡  
2. ... D~ 3. De4†, Dxe4 4. Lc6†, Dxc6† 5. Sb6†, Dxb6‡  
2. ... Sxd7 3. Sb6†, Sdxb6 4. Dd5†, Sxd5 5. Sc7†, Sxc7‡
11. 1. Se5, Td1/Tf1 2. De3†, Kxe3 3. Lxc5†, Td4‡  
1. ... Txe5 2. Lxc5†, Txc5 3. Td5†, Txd5‡  
1. ... Txb6† 2. Sc6†, dxc6 3. Td5†, cxd5‡  
1. ... Lc1 2. Sc6†, dxc6 3. Se6†, Txe6‡
12. 1. Tc1, Le2/Le4 2. d4†, cxd3 ep 3. Dxc6†, Kxc6 4. Kd4†, bxc1‡  
1. ... Ld1 2. Txd1, f3 3. Tf7, f2 4. Txf2, d4/b1‡  
Andere Varianten ähnlich.
13. 1. Le1, Ta4 2. Dh2†, Kf3 3. Lf5, ~ 4. Lg4†, hxg4‡  
1. ... Ta2 2. Dxc4†, Kf3 3. Ld1†, Te2 4. Dg4†, hxg4‡  
1. ... Ta5 bis g5 2. Sd5†, Txd5 3. Ld2†, Txd2 4. Dg4†, hxg4‡
14. 1. Da7, Sc3 2. Sd7†, Lxd7 3. De3†, Se4 4. Tb5†, Lxb5‡  
1. ... Dxb8 2. f4†, gxf4 3. Sd7†, Lxd7 4. Tb5†, Lxb5‡  
1. ... Ld7 2. f4†, gxf4 3. Sxg6†, Dxg6† 4. Te4†, Dxe4‡  
1. ... gxh4 2. Sf7†, Dxf7 3. f4†, Dxf4 4. Te4†, Dxe4‡



## 6. Lösung der Studien

1. 1. Ld2  
Nur dieser Zug rettet das verlorene Spiel.  
1. ... ~ 2. La5, ~ 3. b4, ~ Patt
2. 1. c7, Tc4 2. Th1†, Kg5 3. Tc1, T×c1 4. Se4†, Kf4 5. Sc3 gewinnt
3. 1. g8D†, K×g8 2. T×g6†, T×g6 3. Sa1†, ~ 4. b3, ~ Patt  
2. ... K~ 3. T×g1, &c.  
1. ... Kh6 2. Dh8†, Kg5 3. De5† &c.
4. 1. Lc3, Dg7† 2. K×f5, D×c3 3. Kg6, Dc6† 4. Kf7, Kh7 5. Dh4†, Dh6 6. Dg4  
und erzwingt Matt  
1. ... c5 2. K×d5†, Kg8 3. De8† &c.  
1. ... Df3 2. Df8†, Kh7 3. Df7†, Kh8 4. Ld4, c5 5. Kf6, Dg4 6. Le5, f4  
7. Ke7† &c  
1. ... Kg8 2. Ke6 &c  
1. ... Dg6 2. Kf4† &c.
5. 1. Sc7†, Ke5 2. De8†, Kf5 3. Dh5†, Ke4 4. Dh7†, Kd4 5. Sb5†  
4. ... Kf4/Ke3 5. Sd5†  
4. ... Kf3 5. Dh3†  
4. ... Ke5 5. Dg7†  
2. ... ~ Auf andere Züge gewinnt Weiss die Dame durch Springer-  
schach.  
1. ... Kd6 2. Sb5†  
1. ... Kc5 2. Dc6† und 3. Sb5†/Sd5†
6. 1. Tf7, Dg8 2. Ld5, g5 3. Te7, Df8† 4. Kg6  
3. ... D×d5 4. Te8†  
Falsch wäre 3. ... g4 wegen Dg7† Patt erzwingend.
7. 1. Tg1, Ta8 2. g7, Kh5 3. Kf3, Tg8 4. K×f4, Kh6 5. Kf5, Kh7 am besten.  
6. Kf6 gewinnt. Auf 6. ... Tf8† folgt 7. g×f8T
8. 1. Ta2†, Kb1 2. Sc2, De3† 3. S×e3, L×e3 4. Te2, Lh6 5. Te1†, Lc1 6. Th1,  
g6 7. Te1, g5 8. Th1, g4 9. Te1, g3 10. Th1 und setzt im nächsten  
Zuge Matt.  
2. ... D×c2† 3. T×c2, Lg5 4. Tg2, Le3 5. Te2 gewinnt. Falsch wäre 5. T×g7  
wegen 5. ... Kc1.

9. 1. Lg8†, Kh8 2. Le6, Ld3 3. Kf4, Lb5 4. Ke5, Le8 5. Kd6, Kh7 6. Ke7, Kg6  
7. Ld7, Lf7 8. Lf5†  
2. ... Le8 3. Kf5, Kh7 4. Ld5, Kh6 5. Ke6, Kg6 6. Ke7, Kg5 7. Le6, Lh5  
8. Lf7, Ld1 9. Le8, Lb3 10. Ld7, Lg8 11. Le6  
Auf 2. K×g6, K×g8 Remis; auf 2. Kh6, Lf7 Remis
10. 1. Ta7†, Kb1 2. Tb7†, Ka2 3. Kc2, Dd4 4. Sc3† gewinnt
11. 1. Tb1†, Kd2 2. Sef3†, Kc3 3. Tb3†, Kc4 4. Se5†, K×d4 5. Td3†, Ke4 am  
besten 6. Sf3, Lf6 7. Td4†, L×d4 8. Sg5 Matt  
4. ... Kc5 5. Td3, b3 6. a3, Sd2 7. S×b3†, S×b3 8. Td5 Matt
12. 1. Lb6, D×b6 2. Ta1†, Kb8 3. Se6, Kc8 4. Kf5, Kd7 5. Kf6, Ke8 6. Ta2, Kd7  
7. Ta8 gewinnt  
5. ... Kc8 6. Ke7, Kb8 7. Kd7 gewinnt
13. 1. Sc5†, Kd6 2. Sc4†, Kd5 3. Se3† &c.  
Wenn 1. ... Kf5/Kd5 2. e4† und gewinnt mit dem nächsten Zuge die  
Dame.
14. 1. e6†  
1. ... K×e6 2. Lb3 gewinnt mit dem nächsten Zuge die Dame und das  
Spiel.  
Auf 1. ... D×e6 gewinnt 2. Lg4.
15. 1. Dg8†, Ke7 2. Sc6†, Kd7 3. Se5†, Kc7 4. Df7†, Kb8 5. De8†, Ka7 6. Dd7†,  
Ka6 7. Dc8†, Kb5 8. Dc4†, Ka5 9. Sc6 Matt  
4. ... Kc8 5. Dd7†, Kb8 6. Sc6† &c.  
3. ... Ke7 4. Df7†, Kd8 5. Dd7 Matt oder 4. ... Kd6 5. Sc4† gewinnt  
die Dame.  
2. ... Kf6 3. Dg6 Matt; 2. ... Kd6 3. Df8† gewinnt die Dame.  
Andere Varianten ähnlich.  
[1. Dg7†!]
16. (Nur die Züge für Weiss werden angegeben)  
1. Sf5† 2. Se5† 3. Se7† 4. Sd7† 5. Sc8† 6. Sb8† 7. Sa7† 8. Sa6† 9. Sb5†  
10. Sb4† 11. Sc3† (Schwarz muss Kf2 spielen, weil auf Ke1 12. Sd3  
mattsetzt) 12. Sd3† 13. Se4† 14. Se5† 15. Sg3† 16. Sg4† Spielt nun  
Schwarz Kg6, so wiederholt Weiss wiederum 17. Se5† &c; spielt  
Schwarz jedoch 16. ... Ke7, so folgt 17. Sf5† unter König wird wie-  
derum über das ganze Brett getrieben wie vorher &c. In beiden Fäl-  
len also Remis
17. 1. e6, Te3† 2. Kf1, T×e6 3. Dg2†, R×g2 4. b8D†, Kh7 5. K×g2, T×f6 6. De5,  
Te6 7. D×c5, Te2† 8. Kf3 gewinnt.  
Auf 1. ... f×e6 gewinnt 2. Dh2.
18. 1. h7†, Kg7 2. h8D†, K×h8 3. Kf7 gewinnt.

