

RONDAR BOATS
LIMITED

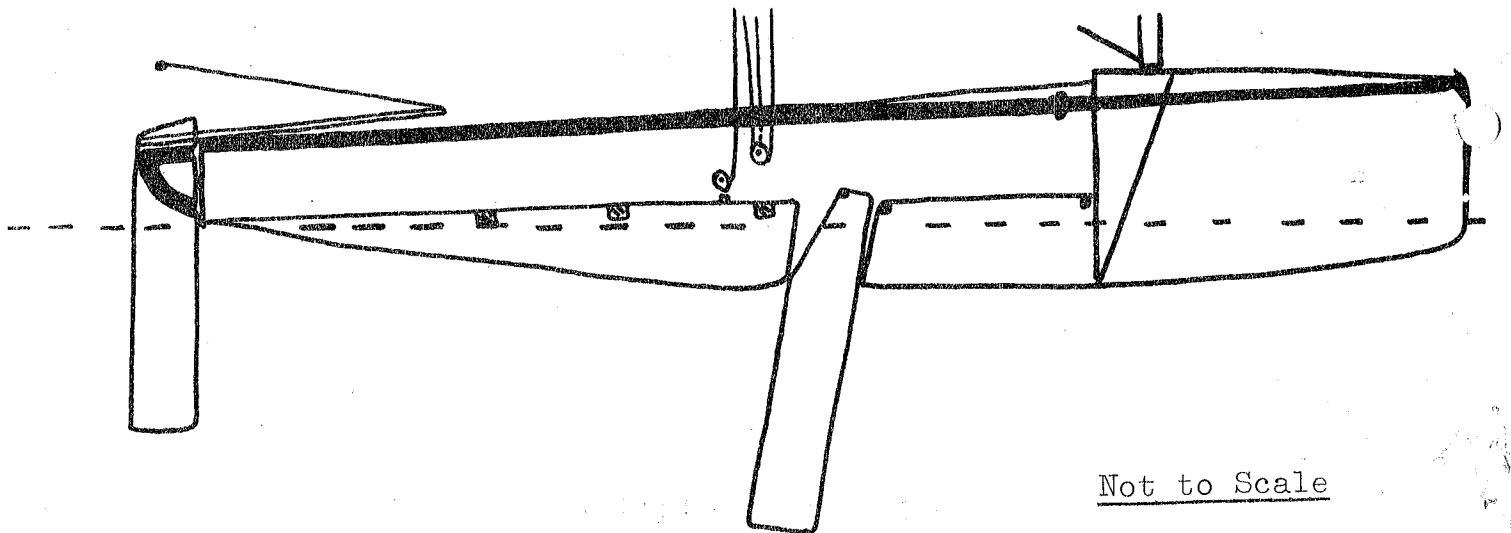
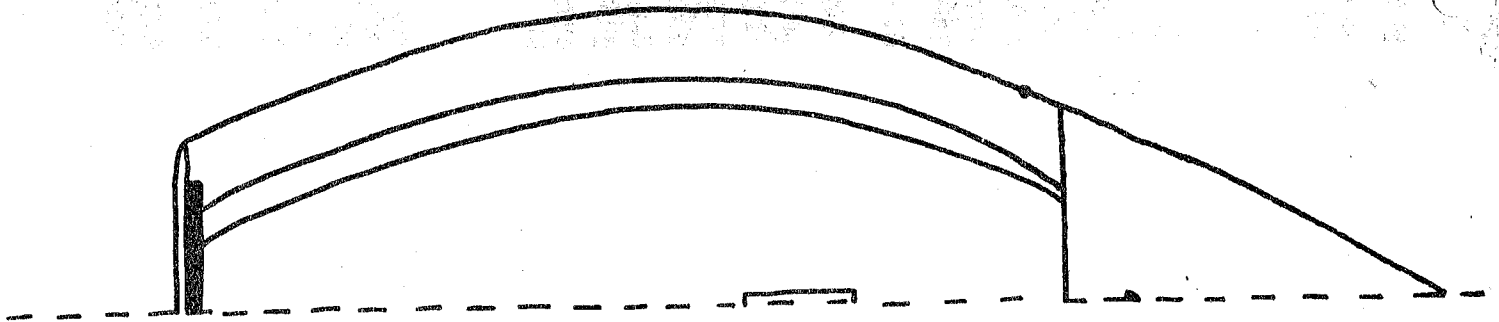
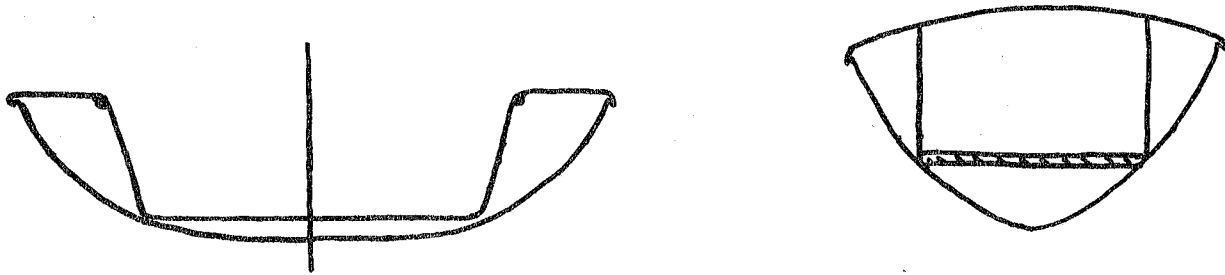
INTERNATIONAL MOTH

SKOL MK.III

SPECIFICATION
AND
PRICE LIST

WOODEN MOTH KIT LAY OUT FINISHED

Fig.1.



Not to Scale

THE SKOL MK.III INTERNATIONAL MOTH

THE INTERNATIONAL MOTH CLASS

The official "International" status of the Moth Class was recognised by I.Y.R.U. in November 1970 under Group A(R) - i.e., as one of the high performance racing dinghy Classes from which the Olympic Classes are chosen - the (R) means that it is a "Restricted" Class, which allows free development of design, materials and construction.

The principal measurement limitations of the International Moth Class are --

Maximum hull length	- 11 feet	(3.353 metres)
Maximum sail area	- 85 square feet	(7.897sq.ft.)
Maximum luff length of sail	- 17 feet	(5.182 metres)

THE SKOL INTERNATIONAL MOTH

The original SKOL design specifications were to produce an International Moth -

- a. of fibreglass construction, to combine maximum strength and rigidity with minimum weight.
- b. suitable for helmsmen from 8½ stone to 12½ stone.
- c. giving the highest average performance over a range of winds from force 1 to 6 and in all sea conditions.
- d. with an attractive, simple, uncluttered layout, easy to sail, safe, and reasonably cheap.
- e. which will win races.

THE SKOL MK.III

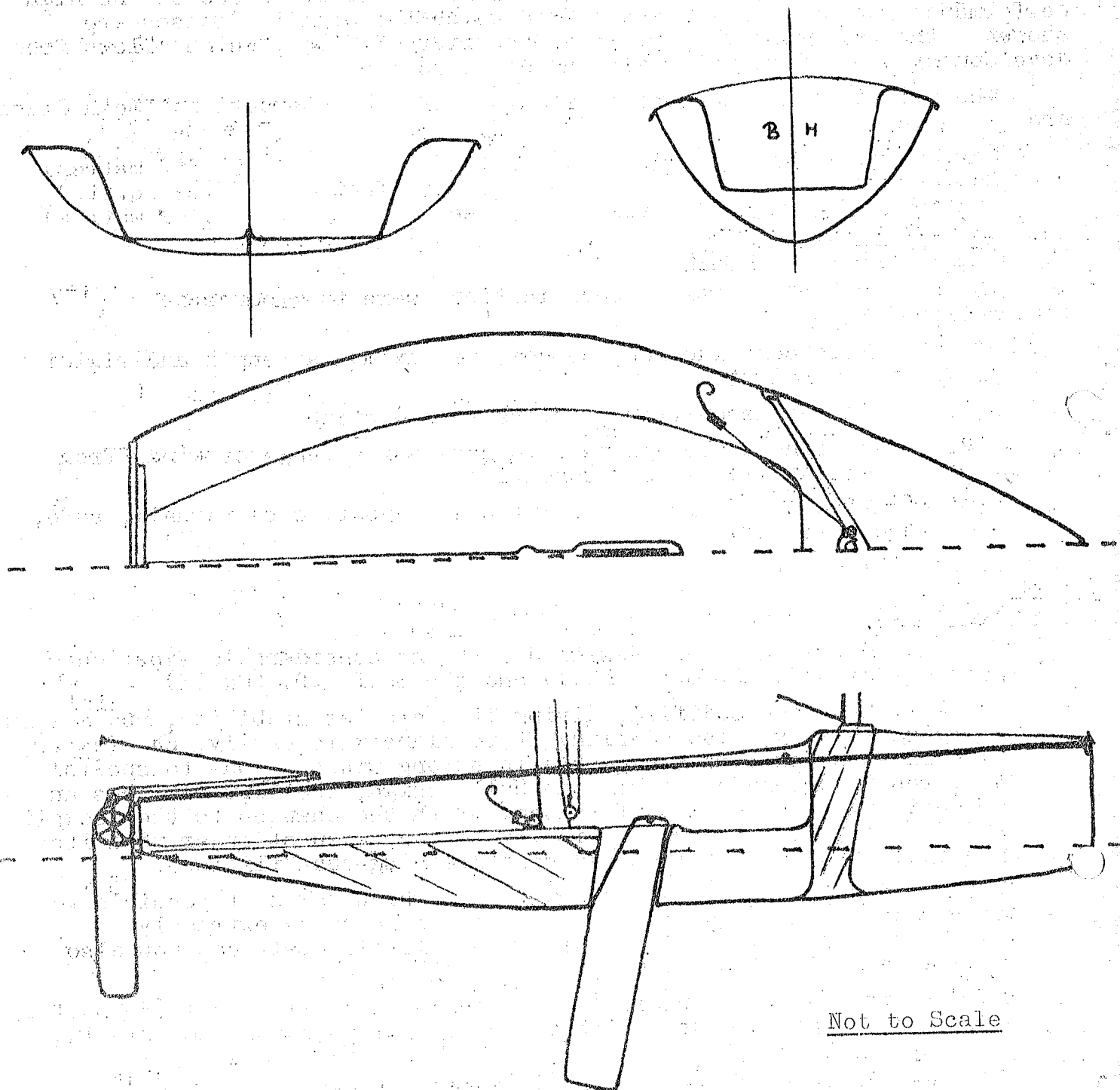
- a. The SKOL Mk.III has been designed with the considerable experience gained from the SKOL S.L. (Mk.I) and the SKOL S.D. (Mk.II).
- b. The Hull has been modified, giving it a greater stability, and weight carrying ability, also enabling it to plane more easily, and faster, as well as being more manageable in strong winds. Due to special features incorporated within the Hull design, the boat also has an exceptional light wind performance. With the changes to the cockpit and Deck layouts, the Mk.III is lighter and even stronger than its predecessors, and has improved self-draining capabilities.
- c. The new design gives more internal room which makes it possible to carry more than one person, so as well as being an extremely competitive racing machine, this superb little craft can now also be used as a 'fun' boat.
- d. To make it easier for beginners to manage, a smaller sail (55 sq.ft.) can be purchased and used without any modification to the existing rig.
- e. We have considerable experience in building high performance International racing dinghies and regard the SKOL Mk.III International Moth as the best value for money, and one of the finest lightweight sailing boats available today, whether the boat is used for 'fun' purposes or campaigned hard in National and International competitions.

SERVICE

Your local Agent will give you first-class service and have spares readily available should they be required, or, if there is no Agent in your immediate vicinity, we will be happy to be of service should you contact the Works direct.

ALL GLASS SKOL MK.III LAY OUT

Fig.2.



THE SKOL MK.III INTERNATIONAL MOTH

SPECIFICATION

STAGE I

The bare fibreglass Hull complete with corner transoms, centrebox moulding and two transport-only stiffeners.

STAGE II

The kit version of the SKOL Mk.III (as shown in line drawing Fig.1). It consists of a Stage I Hull, together with plywood sheets for decking and cockpit floor, marked out ready for cutting, all timber work cut roughly to size, together with glue, screws, resin and fibreglass strip and all necessary items to complete. Full instructions are supplied. Also included are all fittings, together with Needlespar Mast and Boom in kit form. The rigging comes ready made up, together with all ropes and sheets.

The boat is very easy to complete for the amateur, and should not take more than a few weekends and evenings to put together. When finished, the Hull weight should be around 70 lbs. Only the usual carpentry tools will be necessary, together with a few 'G' clamps. Previous knowledge of boat building would be useful, but not absolutely essential.

STAGE III

The Hull and Deck unit. This consists of the fibreglass Hull and centrebox moulding (as shown in line drawing Fig.2) with an all-fibreglass Deck bonded to it.

This is a fully sealed unit which is completely self-draining and has 200 lbs. of foam buoyancy contained within the Hull giving complete security should the Hull be holed. (Thus conforming to the new I.M.C.A. Buoyancy Rules.)

The cockpit is fully self-draining. A king post is built in to take the Deck-stepped mast. All ply pads are bonded to the underside of the deck to take cleats and other fittings. This Stage has S/S forestay and shroud plates fitted.

STAGE IV

SKOL Mk.III - complete boat.

This Stage is complete in every way ex Sail.

The fittings layout used is as shown in line drawing Fig.2 with an aluminium tapered mast and boom by Needlespar to fit a 16ft. 3in. luff sail. Multi-laminate ply is used on the lifting rudderblade and the dagger centreplate.

A 4-1 kicking strap is supplied which is attached to the base of the mast allowing it to rotate.

A 4-1 non-sliding centre mainsheet is used, the final lead being through a swivelling mainsheet jammer. 1 1/4" plait is supplied for the sheet. The rudderhead is in aluminium and is very light yet exceptionally strong. A flexible tiller extension with a universal joint is used and all rigging is stainless steel.

COLOURS

Standard : Hull - Anchusa Blue
Deck - Pale Blue

Other Colours Available :
At Extra Cost of \$5.00 per colour.

White, Pale Green, British Racing Green, Pale Yellow, Golden Yellow, Tangerine, Flame Red, Blood Red, Maroon, Bright Blue, Navy Blue.

SKOL MK.III ORDER FORM

Customer's Name
 Address
 Telephone No.

Date of Order Delivery Date
 Hull Colour Deck Colour

Price List Effective from November 1971.

STAGE I.	Hull only with centrebox	£53.50
STAGE II.	Kit complete	£130.00
STAGE III.	Hull and Deck	£120.00
STAGE IV.	Complete Boat Ex Sail	£205.00
	With Sail (85sq.ft.)	£232.00

Extras Available

Road Trailer, with fibreglass Cradle & Mast Support	£36.00
Launching Trolley, with Pneumatic Tyres & Cradle	£15.60
Over Cover in Blue Terylene	£12.50
Under Cover in Blue Terylene	£7.50
Centre Mainsheet Track, Traveller & Control Lines	£8.90
Sail (55 sq.ft.)	£18.00

Spares

Rudder Blade. Varnished	£6.50
Rudder Head with Tiller and Extension	£8.50
Centre Plate. Varnished	£8.50

Balance

Deposit

Total

(Prices are subject to alteration without notice.)

Sold subject to standard conditions of trading.

I hereby agree to purchase goods specified and to abide by the terms of business of 'Rondar Boats Ltd.' and conditions of sale as under, which I understand to form part of the Agreement.

Signature

Conditions of Sale

- All prices are quoted ex works New Milton, unless otherwise stated.
- Payment:- U.K. - deposit of 25% with order; balance before collection or on despatch of goods.
 Export - Deposit one third on order; balance before collection or on despatch of goods.
- Prices and estimates are given in good faith. Rondar reserve the right at any time and without notice to vary any price or estimate given to the buyer but quotations shall expire 30 days after submission unless expressly agreed otherwise.
- Any delivery date quoted is given in good faith but is not guaranteed, but delivery shall be within a reasonable time of the date specified, bearing in mind all the circumstances of the particular case.

(Cont'd.....)