

## APPENDIX L

### SFN Network Coverage (CH 51, B2H, With Antenna Discrimination)

No.	Mark	Location	Freq. (MHz)	Polar.	Long.	Lat.	High Effec.	Antenna High	Power ERP	Gain	Freq. Offset	Antenna Pattern	Time Delay
1	R	Ulu Tembeling (F2)	714	H	102E38 44	04N29 42	17	40	1	0	0	D	200
2	R	Telipot (F2)	714	H	102E14 14	06N06 37	47	40	50	0	0	D	0
3	R	Bt. Pelindong (F2)	714	H	103E21 42	03N49 44	281	40	50	0	0	D	0
4	R	Bt. Tinggi (F2)	714	H	103E40 22	02N17 08	322	40	50	0	0	D	0
5	R	Bt. Bakar (F2)	714	H	102E17 01	05N42 18	515	40	30	0	0	D	0
6	R	G. Jerai (F2)	714	H	100E26 00	05N47 11	1162	40	60	0	0	D	0
7	R	G. Kledang (F2)	714	H	101E00 50	04N35 33	686	40	30	0	0	D	0
8	R	Bt. Bauk (F2)	714	H	103E24 44	04N41 38	352	40	40	0	0	D	0
9	R	Bt. Besar (F2)	714	H	103E08 06	05N18 19	159	40	40	0	0	D	0
10	R	G. Ulu Kali (F2)	714	H	101E47 19	03N25 40	1349	40	50	0	0	D	0
11	R	Menara KL (F2)	714	H	101E42 14	03N09 11	453	40	30	0	0	D	0
12	R	G. Pulai (F2)	714	H	103E32 56	01N36 08	647	40	50	0	0	D	0
13	R	G. Ledang (F2)	714	H	102E36 30	02N22 17	1186	40	30	0	0	D	60
14	R	G. T. Burok (F2)	714	H	102E04 06	02N50 20	970	40	10	0	0	D	20
15	R	Bt. Istana (F2)	714	H	102E21 43	03N55 45	131	40	20	5.2	0	D	125
16	R	Bt. Bintang (F2)	714	H	102E38 54	05N37 38	571	40	5	0	0	D	0
17	R	Bt. Larut (F2)	714	H	100E48 21	04N51 24	1334	40	10	0	0	D	40
18	R	Bt. Paloh (F2)	714	H	102E12 53	05N01 40	88	40	10	0	0	D	220
19	R	Bt. T. Air, Jeli (F2)	714	H	101E50 19	05N42 12	66	40	5	7.6	0	D	50
20	R	Bt. Sembilan (F2)	714	H	102E57 23	03N10 08	366	40	30	0	0	D	175

21	R	G. Brinchang (F2)	714	H	101E23 02	04N31 04	734	40	1	5.6	0	D	100
22	R	Penawar (F2)	714	H	104E14 55	01N32 46	100	40	20	0	0	D	0
23	R	Kg. Ulu Slim (F2)	714	H	101E28 59	03N53 40	191	40	1	0	0	D	150
24	R	Bt. Botak (F2)	714	H	102E11 40	03N52 35	172	40	10	0	0	D	150
25	R	Bt. Penara (F2)	714	H	100E15 40	05N22 31	567	40	30	0	0	D	0
26	R	Bt. K. Ara (F2)	714	H	102E12 21	02N43 34	64	40	5	0	0	D	10
27	R	Felda Tenang (F2)	714	H	102E29 17	05N33 46	71	40	5	5.6	0	D	0
28	R	Sg. Lembing (F2)	714	H	103E00 42	03N55 23	114	40	2	0	0	D	0
29	R	Kg. Ulu Sungai (F2)	714	H	101E43 50	04N01 06	92	40	2	0	0	D	220
30	R	Bt. Grik (F2)	714	H	101E08 11	05N25 41	131	40	2	5.6	0	D	80
31	R	Bt. Tampin (F2)	714	H	102E12 29	02N29 26	535	40	20	0	0	D	10

### Sabah and Sarawak

No.	Mark	Location	Freq. (MHz)	Polar.	Long.	Lat.	High Effec.	Antenna High	Power ERP	Gain	Freq. Offset	Antenna Pattern	Time Delay
1	R	Bt. Lima (F2)	714	H	111E49 32	02N21 21	42	40	30	0	0	D	170
2	R	Bt. Nyabau (F2)	714	H	113E05 09	03N13 10	576	40	30	0	0	D	0
3	R	Bt. Tampalagus (F2)	714	H	115E37 28	05N08 16	262	40	10	0	0	D	0
4	R	Bt. Timbalai (F2)	714	H	115E10 23	05N16 11	41	40	2	0	0	D	0
5	R	G. Serapi (F2)	714	H	110E11 14	01N35 02	146	40	30	0	0	D	100
6	R	L. Mandau (F2)	714	H	116E13 39	06N02 52	40	40	30	0	0	D	0
7	R	Layang2 (F2)	714	H	116E34 48	06N01 43	137	40	10	0	0	D	0
8	R	Bt. Temudok (F2)	714	H	111E27 05	01N10 35	89	40	30	0	0	D	100
9	R	Hotel Perkasa (F2)	714	H	115E54 11	05N04 18	136	40	1	0	0	D	0
10	R	Off Spaoh (F2)	714	H	111E27 39	01N32 38	52	40	2	0	0	D	50

11	R	Bt. X (F2)	714	H	116E22 01	06N18 19	232	40	30	0	0	D	0
12	R	Tangki Air (F2)	714	H	117E30 12	04N30 11	415	40	1	0	0	D	150
13	R	Semporna (F2)	714	H	118E03 47	04N27 41	434	40	2	10.5	0	D	250
14	R	Song (F2)	714	H	112E34 50	01N59 13	109	40	1	0	0	D	100
15	R	Seratok (F2)	714	H	111E21 41	01N47 02	55	40	30	0	0	D	150
16	R	L. Antu (F2)	714	H	111E49 00	01N03 40	47	40	10	0	0	D	100
17	R	Mukah (F2)	714	H	112E04 11	02N54 31	41	40	10	0	0	D	200
18	R	Bt. Ampangan (F2)	714	H	110E37 14	01N09 07	100	40	30	0	0	D	50
19	R	Bt. Lambir (F2)	714	H	114E01 54	04N12 50	85	40	30	0	0	D	0
20	R	Bt. Mas (F2)	714	H	115E00 29	04N44 40	49	40	10	0	0	D	80
21	R	Bt. Ancharang (F2)	714	H	113E46 53	03N49 01	105	40	10	5.6	0	D	30
22	R	Bt. Kapit (F2)	714	H	112E55 23	02N02 26	90	40	30	0	0	D	50
23	R	Belaga (F2)	714	H	113E47 53	02N45 07	40	40	5	0	0	D	220
24	R	Bt. Gadong (F2)	714	H	115E41 17	05N22 02	64	40	5	0	0	D	0
25	R	Bt. S. Rudang (F2)	714	H	114E55 49	04N30 22	263	40	5	0	0	D	70
26	R	Bt. Trig (F2)	714	H	118E04 00	05N50 30	46	40	30	0	0	D	220
27	R	G. Andrassy (F2)	714	H	117E58 45	04N20 14	412	40	30	0	0	D	220
28	R	G. Silam (F2)	714	H	118E10 32	04N57 30	117	40	30	0	0	D	220
29	R	Felda Sahabat (F2)	714	H	119E03 43	05N05 06	148	40	30	10.5	0	D	220
30	R	Bt. Kelapa (F2)	714	H	116E49 07	06N53 51	41	40	30	0	0	D	0
31	R	Nabawan (F2)	714	H	116E26 57	05N02 41	216	40	2	10.5	0	D	100
32	R	Bt. Tiong (F2)	714	H	115E23 40	04N52 50	150	40	5	0	0	D	25

**SFN Network Coverage** (CH 57, B2H, With Antenna Discrimination)

No.	Mark	Location	Freq. (MHz)	Polar.	Long.	Lat.	High Effec.	Antenna High	Power ERP	Gain	Freq. Offset	Antenna Pattern	Time Delay
1	R	Ulu Tembeling (F)	762	H	102E38 44	04N29 42	17	40	10	0	0	D	150
2	R	Telipot (F)	762	H	102E14 14	06N06 37	47	40	50	0	0	D	0
3	R	Bt. Pelindong (F)	762	H	103E21 42	03N49 44	281	40	30	0	0	D	100
4	R	Bt. Tinggi (F)	762	H	103E40 22	02N17 08	322	40	50	0	0	D	0
5	R	Bt. Bakar (F)	762	H	102E17 01	05N42 18	515	40	50	0	0	D	100
6	R	G. Jerai (F)	762	H	100E26 00	05N47 11	1162	40	60	0	0	D	75
7	R	G. Kledang (F)	762	H	101E00 50	04N35 33	686	40	50	8.9	0	D	170
8	R	Bt. Bauk (F)	762	H	103E24 44	04N41 38	352	40	30	0	0	D	0
9	R	Bt. Besar (F)	762	H	103E08 06	05N18 19	159	40	30	0	0	D	0
10	R	G. Ulu Kali (F)	762	H	101E47 19	03N25 40	1349	40	50	0	0	D	100
11	R	Menara KL (F)	762	H	101E42 14	03N09 11	453	40	30	0	0	D	150
12	R	G. Pulai (F)	762	H	103E32 56	01N36 08	647	40	50	0	0	D	0
13	R	G. Ledang (F)	762	H	102E36 30	02N22 17	1186	40	30	0	0	D	50
14	R	Bt. Istana (F)	762	H	102E21 43	03N55 45	131	40	30	0	0	D	200
15	R	Bt. Bintang (F)	762	H	102E38 54	05N37 38	571	40	5	0	0	D	0
16	R	Bt. Larut (F)	762	H	100E48 21	04N51 24	1334	40	2	0	0	D	200
17	R	Bt. Senggora (F)	762	H	102E46 48	03N33 46	214	40	10	8.9	0	D	180
18	R	Bt. Paloh (F)	762	H	102E12 53	05N01 40	88	40	20	8.9	0	D	200
19	R	Bt. T. Air, Jeli (F)	762	H	101E50 19	05N42 12	66	40	10	10.5	0	D	0

20	R	Bt. Sembilan (F)	762	H	102E57 23	03N10 08	366	40	30	0	0	D	100
21	R	G. Brinchang (F)	762	H	101E23 02	04N31 04	734	40	10	10.5	0	D	200
22	R	Penawar (F)	762	H	104E14 55	01N32 46	100	40	20	10.5	0	D	180
23	R	Kg. Ulu Slim (F)	762	H	101E28 59	03N53 40	191	40	2	10.5	0	D	170
24	R	Bt. Botak (F)	762	H	102E11 40	03N52 35	172	40	20	0	0	D	150
25	R	Bt. Penara (F)	762	H	100E15 40	05N22 31	567	40	30	10.5	0	D	170
26	R	Bt. K. Ara (F)	762	H	102E12 21	02N43 34	55	40	30	0	0	D	80
27	R	Felda Tenang (F)	762	H	102E29 17	05N33 46	71	40	2	10.5	0	D	0
28	R	Sg. Lembing (F)	762	H	103E00 42	03N55 23	114	40	5	10.5	0	D	100
29	R	Kg. Ulu Sungai (F)	762	H	101E43 50	04N01 06	92	40	5	10.5	0	D	200
30	R	Bt. Grik (F)	762	H	101E08 11	05N25 41	100	40	1	10.5	0	D	200
31	R	Bt. Tampin (F)	762	H	102E12 29	02N29 26	535	40	30	0	0	D	100

### Sabah and Sarawak

No.	Mark	Location	Freq. (MHz)	Polar.	Long.	Lat.	High Effec.	Antenna High	Power ERP	Gain	Freq. Offset	Antenna Pattern	Time Delay
1	R	Bt. Lima (F)	762	H	111E49 32	02N21 21	42	40	30	0	0	D	70
2	R	Bt. Nyabau (F)	762	H	113E05 09	03N13 10	576	40	30	0	0	D	0
3	R	Bt. Tampalagus (F)	762	H	115E37 28	05N08 16	262	40	10	0	0	D	0
4	R	Bt. Timbalai (F)	762	H	115E10 23	05N16 11	41	40	2	0	0	ND	0
5	R	G. Serapi (F)	762	H	110E11 14	01N35 02	146	40	30	0	0	D	100
6	R	L. Mandau (F)	762	H	116E13 39	06N02 52	40	40	30	0	0	D	0
7	R	Layang2 (F)	762	H	116E34 48	06N01 43	137	40	10	0	0	D	0
8	R	Bt. Temudok (F)	762	H	111E27 05	01N10 35	89	40	30	0	0	D	100
9	R	Hotel Perkasa (F)	762	H	115E54 11	05N04 18	136	40	1	0	0	D	0
10	R	Off Spaoh (F)	762	H	111E27 39	01N32 38	52	40	2	0	0	D	100

11	R	Bt. X (F)	762	H	116E22 01	06N18 19	232	40	30	0	0	D	0
12	R	Tangki Air (F)	762	H	117E30 12	04N30 11	415	40	1	0	0	D	150
13	R	Semporna (F)	762	H	118E03 47	04N27 41	434	40	2	10.5	0	D	220
14	R	Song (F)	762	H	112E34 50	01N59 13	109	40	1	0	0	D	100
15	R	Seratok (F)	762	H	111E21 41	01N47 02	55	40	30	0	0	D	150
16	R	L. Antu (F)	762	H	111E49 00	01N03 40	47	40	10	0	0	D	100
17	R	Mukah (F)	762	H	112E04 11	02N54 31	41	40	10	0	0	D	120
18	R	Bt. Ampangan (F)	762	H	110E37 14	01N09 07	100	40	30	0	0	D	50
19	R	Bt. Lambir (F)	762	H	114E01 54	04N12 50	85	40	30	0	0	D	0
20	R	Bt. Mas (F)	762	H	115E00 29	04N44 40	49	40	10	0	0	D	80
21	R	Bt. Ancharang (F)	762	H	113E46 53	03N49 01	105	40	10	5.6	0	D	30
22	R	Bt. Kapit (F)	762	H	112E55 23	02N02 26	90	40	30	0	0	D	50
23	R	Belaga (F)	762	H	113E47 53	02N45 07	40	40	5	0	0	D	220
24	R	Bt. Gadong (F)	762	H	115E41 17	05N22 02	64	40	5	0	0	D	0
25	R	Bt. S. Rudang (F)	762	H	114E55 49	04N30 22	263	40	5	0	0	D	70
26	R	Bt. Trig (F)	762	H	118E04 00	05N50 30	46	40	30	0	0	D	300
27	R	G. Andrassy (F)	762	H	117E58 45	04N20 14	412	40	30	0	0	D	220
28	R	G. Silam (F)	762	H	118E10 32	04N57 30	117	40	30	0	0	D	220
29	R	Felda Sahabat (F)	762	H	119E03 43	05N05 06	148	40	30	10.5	0	D	220
30	R	Bt. Kelapa (F)	762	H	116E49 07	06N53 51	41	40	30	0	0	D	0
31	R	Nabawan (F)	762	H	116E26 57	05N02 41	216	40	2	10.5	0	D	100
32	R	Bt. Tiong (F)	762	H	115E23 40	04N52 50	150	40	5	0	0	D	25

**SFN Network Coverage** (CH 59, B2H, With Antenna Discrimination)

No.	Mark	Location	Freq. (MHz)	Polar.	Long.	Lat.	High Effec.	Antenna High	Power ERP	Gain	Freq. Offset	Antenna Pattern	Time Delay
1	R	Ulu Tembeling (F3)	778	H	102E38 44	04N29 42	17	40	1	0	0	D	150
2	R	Telipot (F3)	778	H	102E14 14	06N06 37	47	40	50	0	0	D	0
3	R	Bt. Pelindung (F3)	778	H	103E21 42	03N49 44	281	40	50	0	0	D	40
4	R	Bt. Tinggi (F3)	778	H	103E40 22	02N17 08	322	40	50	0	0	D	0
5	R	Bt. Bakar (F3)	778	H	102E17 01	05N42 18	515	40	30	0	0	D	0
6	R	G. Jerai (F3)	778	H	100E26 00	05N47 11	1162	40	60	0	0	D	0
7	R	G. Kledang (F3)	778	H	101E00 50	04N35 33	686	40	30	0	0	D	0
8	R	Bt. Bauk (F3)	778	H	103E24 44	04N41 38	352	40	40	0	0	D	0
9	R	Bt. Besar (F3)	778	H	103E08 06	05N18 19	159	40	40	0	0	D	0
10	R	G. Ulu Kali (F3)	778	H	101E47 19	03N25 40	1349	40	50	0	0	D	25
11	R	Menara KL (F3)	778	H	101E42 14	03N09 11	453	40	30	0	0	D	0
12	R	G. Pulai (F3)	778	H	103E32 56	01N36 08	647	40	50	0	0	D	0
13	R	G. Ledang (F3)	778	H	102E36 30	02N22 17	1186	40	30	0	0	D	60
14	R	G. T. Burok (F3)	778	H	102E04 06	02N50 20	970	40	10	0	0	D	70
15	R	Bt. Istana (F3)	778	H	102E21 43	03N55 45	131	40	20	5.2	0	D	100

16	R	Bt. Bintang (F3)	778	H	102E38 54	05N37 38	571	40	5	0	0	D	0
17	R	Bt. Larut (F3)	778	H	100E48 21	04N51 24	1334	40	10	0	0	D	60
18	R	Bt. Paloh (F3)	778	H	102E12 53	05N01 40	88	40	10	0	0	D	200
19	R	Bt. T. Air, Jeli (F3)	778	H	101E50 19	05N42 12	66	40	5	7.6	0	D	0
20	R	Bt. Sembilan (F3)	778	H	102E57 23	03N10 08	366	40	30	0	0	D	220
21	R	G. Brinchang (F3)	778	H	101E23 02	04N31 04	734	40	1	5.6	0	D	75
22	R	Penawar (F3)	778	H	104E14 55	01N32 46	100	40	20	0	0	D	0
23	R	Kg. Ulu Slim (F3)	778	H	101E28 59	03N53 40	191	40	1	0	0	D	50
24	R	Bt. Botak (F3)	778	H	102E11 40	03N52 35	172	40	10	0	0	D	100
25	R	Bt. Penara (F3)	778	H	100E15 40	05N22 31	567	40	30	0	0	D	0
26	R	Bt. K. Ara (F3)	778	H	102E12 21	02N43 34	64	40	5	0	0	D	70
27	R	Felda Tenang (F3)	778	H	102E29 17	05N33 46	71	40	5	5.6	0	D	0
28	R	Sg. Lembing (F3)	778	H	103E00 42	03N55 23	114	40	2	0	0	D	0
29	R	Kg. Ulu Sungai (F3)	778	H	101E43 50	04N01 06	92	40	2	0	0	D	100
30	R	Bt. Grik (F3)	778	H	101E08 11	05N25 41	131	40	2	5.6	0	D	125
31	R	Bt. Tampin (F3)	778	H	102E12 29	02N29 26	535	40	20	0	0	D	0

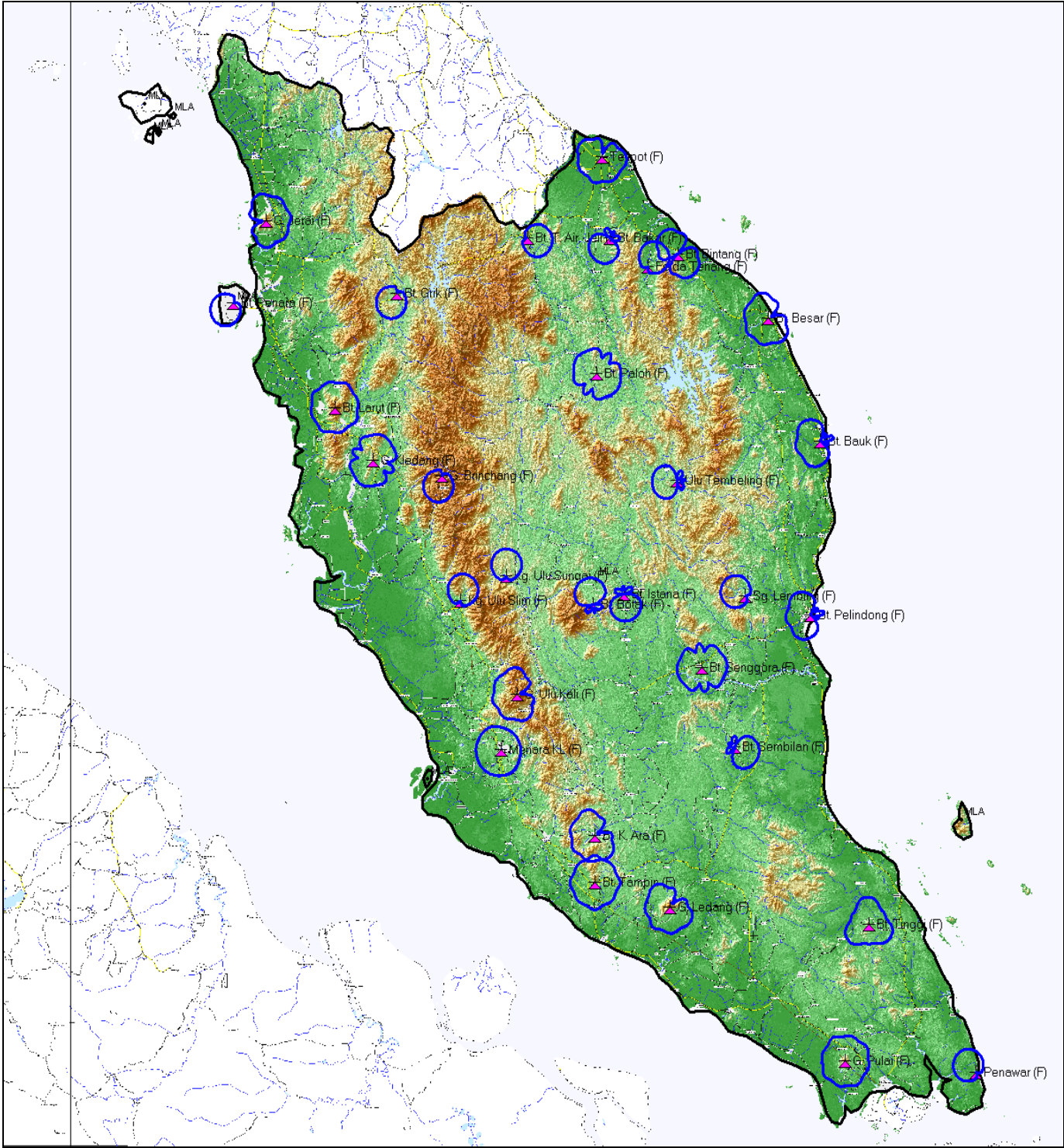
### Sabah and Sarawak

No.	Mark	Location	Freq. (MHz)	Polar.	Long.	Lat.	High Effec.	Antenna High	Power ERP	Gain	Freq. Offset	Antenna Pattern	Time Delay
1	R	Bt. Lima (F3)	778	H	111E49 32	02N21 21	42	40	50	0	0	D	70
2	R	Bt. Nyabau (F3)	778	H	113E05 09	03N13 10	576	40	30	0	0	D	0
3	R	Bt. Tampalagus (F3)	778	H	115E37 28	05N08 16	262	40	10	0	0	D	0
4	R	Bt. Timbalai (F3)	778	H	115E10 23	05N16 11	41	40	2	0	0	D	0
5	R	G. Serapi (F3)	778	H	110E11 14	01N35 02	146	40	30	0	0	D	130
6	R	L. Mandau (F3)	778	H	116E13 39	06N02 52	40	40	30	0	0	D	280

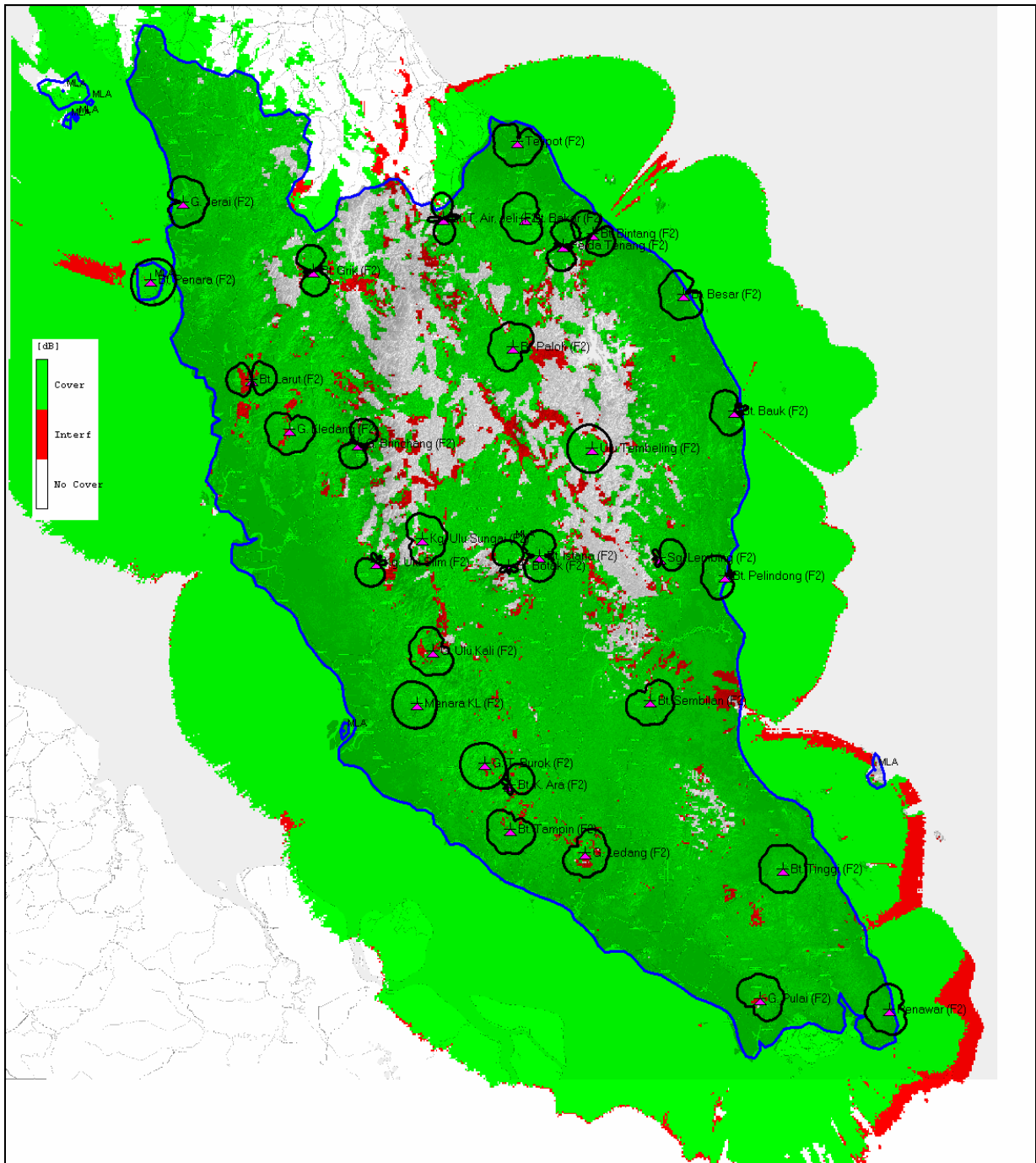


7	R	Layang2 (F3)	778	H	116E34 48	06N01 43	137	40	10	0	0	D	250
8	R	Bt. Temudok (F3)	778	H	111E27 05	01N10 35	89	40	30	0	0	D	100
9	R	Hotel Perkasa (F3)	778	H	115E54 11	05N04 18	136	40	1	0	0	D	0
10	R	Off Spaoh (F3)	778	H	111E27 39	01N32 38	52	40	10	0	0	D	100
11	R	Bt. X (F3)	778	H	116E22 01	06N18 19	232	40	20	0	0	D	200
12	R	Tangki Air (F3)	778	H	117E30 12	04N30 11	415	40	1	0	0	D	350
13	R	Semporna (F3)	778	H	118E03 47	04N27 41	434	40	2	10.5	0	D	430
14	R	Song (F3)	778	H	112E34 50	01N59 13	109	40	1	0	0	D	250
15	R	Seratok (F3)	778	H	111E21 41	01N47 02	55	40	50	0	0	D	80
16	R	L. Antu (F3)	778	H	111E49 00	01N03 40	47	40	30	0	0	D	0
17	R	Mukah (F3)	778	H	112E04 11	02N54 31	41	40	10	0	0	D	130
18	R	Bt. Ampangan (F3)	778	H	110E37 14	01N09 07	100	40	30	0	0	D	170
19	R	Bt. Lambir (F3)	778	H	114E01 54	04N12 50	85	40	30	0	0	D	0
20	R	Bt. Mas (F3)	778	H	115E00 29	04N44 40	49	40	10	0	0	D	80
21	R	Bt. Ancharang (F3)	778	H	113E46 53	03N49 01	105	40	10	5.6	0	D	100
22	R	Bt. Kapit (F3)	778	H	112E55 23	02N02 26	90	40	30	0	0	D	160
23	R	Belaga (F3)	778	H	113E47 53	02N45 07	40	40	2	0	0	D	350
24	R	Bt. Gadong (F3)	778	H	115E41 17	05N22 02	64	40	5	0	0	D	0
25	R	Bt. S. Rudang (F3)	778	H	114E55 49	04N30 22	263	40	5	0	0	D	70
26	R	Bt. Trig (F3)	778	H	118E04 00	05N50 30	46	40	30	0	0	D	525
27	R	G. Andrassy (F3)	778	H	117E58 45	04N20 14	412	40	20	0	0	D	410
28	R	G. Silam (F3)	778	H	118E10 32	04N57 30	117	40	20	0	0	D	390
29	R	Felda Sahabat (F3)	778	H	119E03 43	05N05 06	148	40	20	10.5	0	D	330
30	R	Bt. Kelapa (F3)	778	H	116E49 07	06N53 51	41	40	30	0	0	D	140
31	R	Nabawan (F3)	778	H	116E26 57	05N02 41	216	40	5	10.5	0	D	350
32	R	Bt. Tiong (F3)	778	H	115E23 40	04N52 50	150	40	5	0	0	D	25

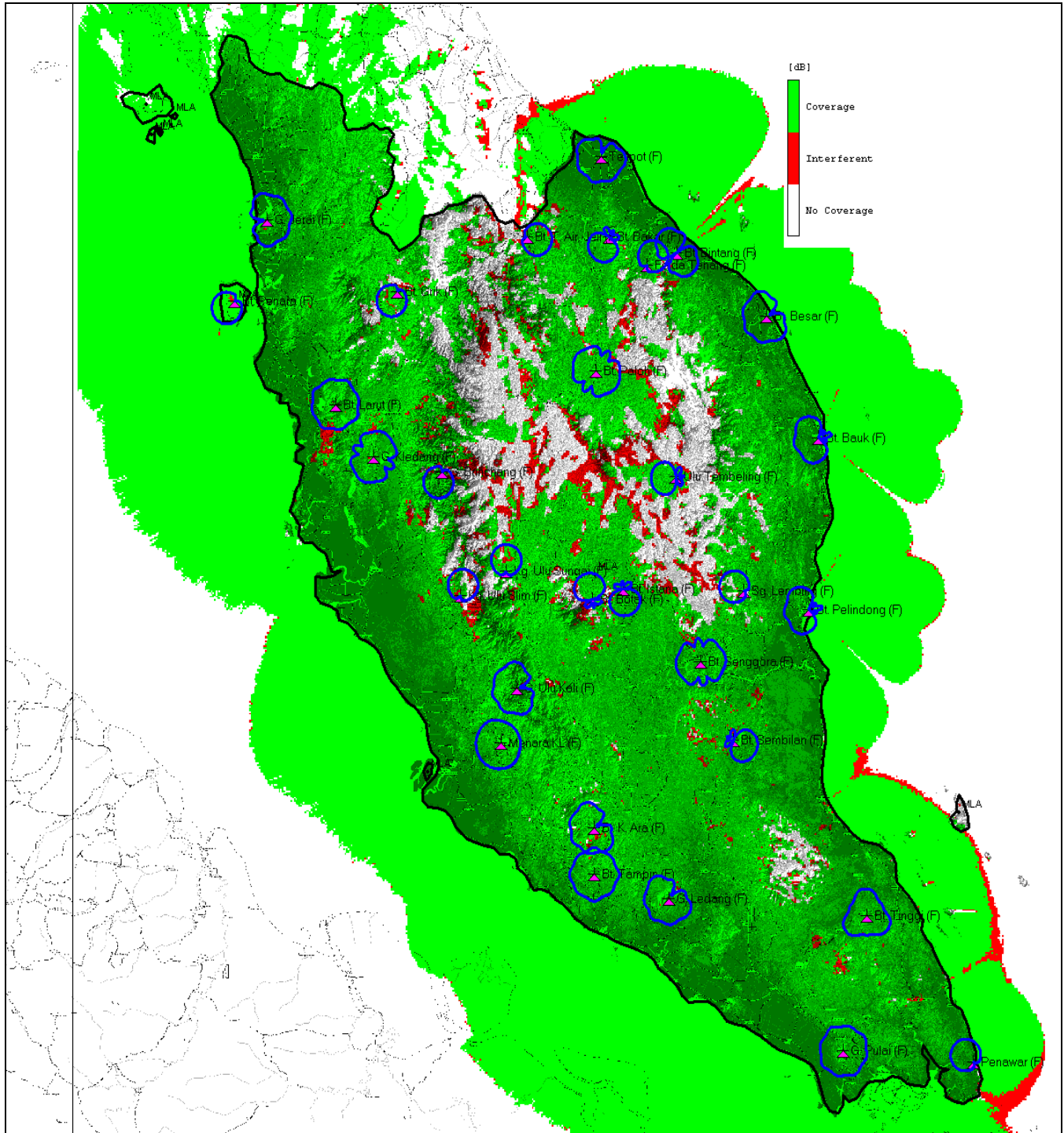
# Location of transmitters & Antenna Pattern (Using 100 meters street map)



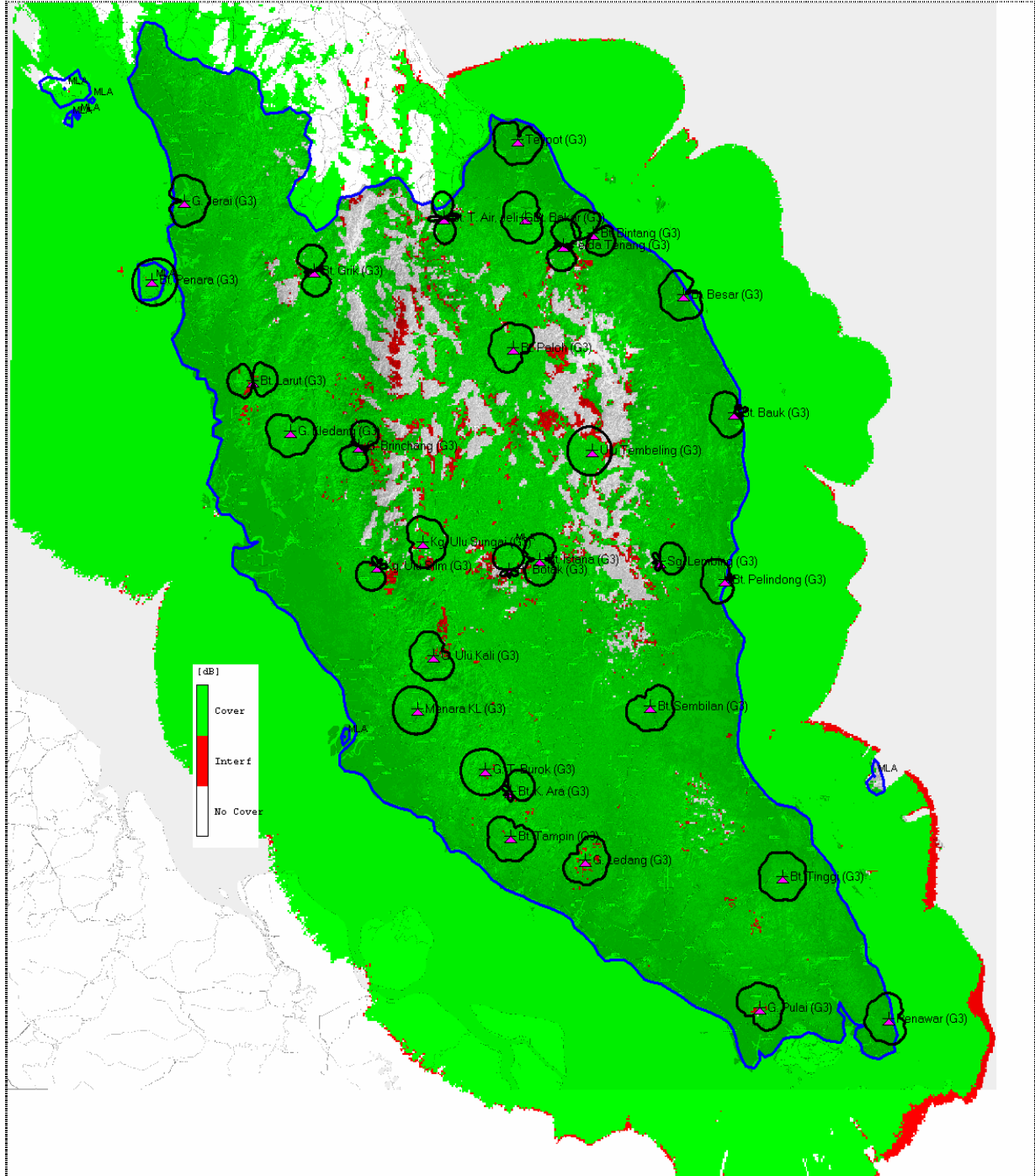
# Coverage Map (CH 51, B2H System variant & Fixed rooftop antenna)



# Coverage Map (CH 57, B2H System variant & Fixed rooftop antenna)

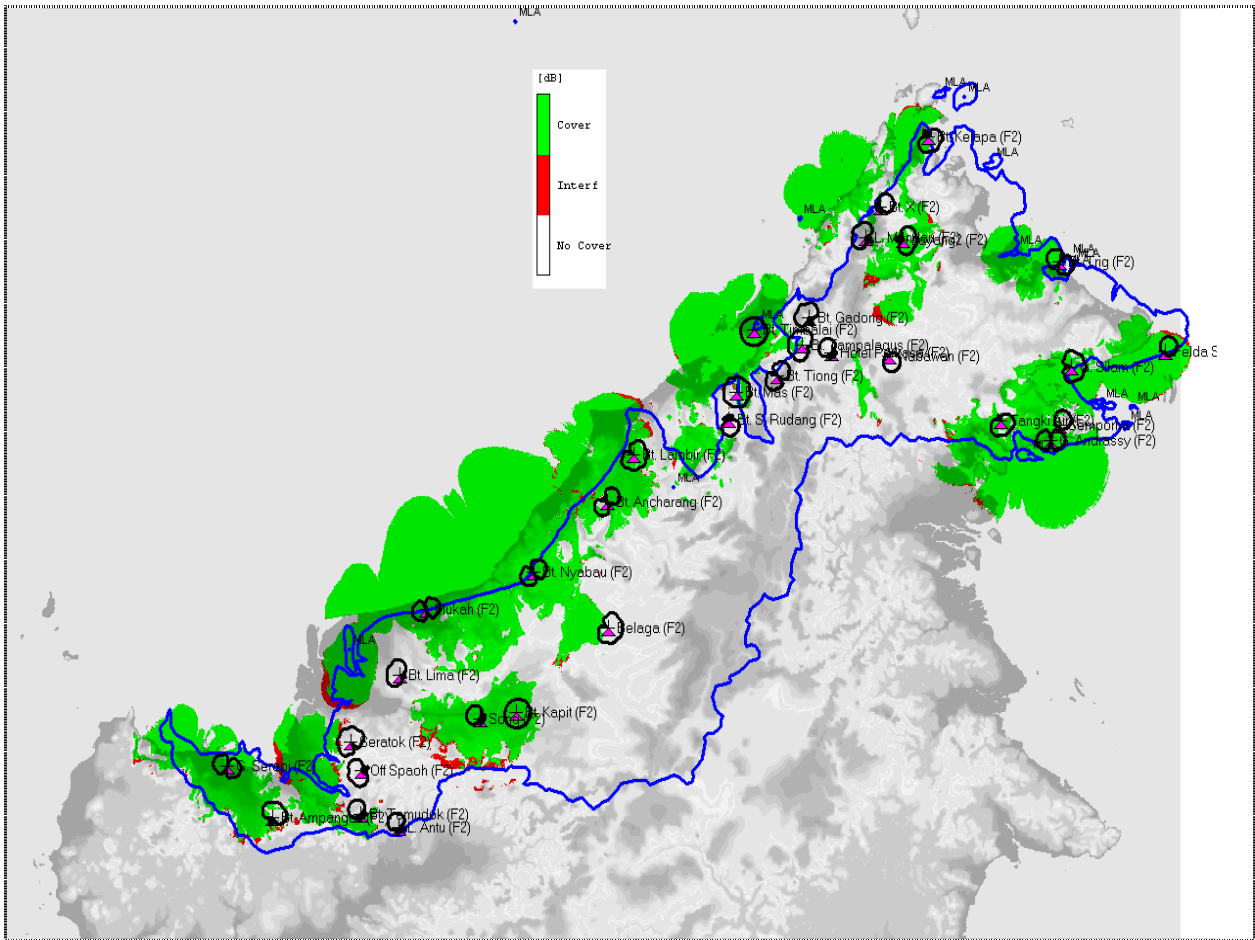


# Coverage Map (CH. 59, B2H System Variant & Fixed rooftop antenna)



# East Malaysia

## Coverage Map (CH 51, B2H System Variant & Fixed Rooftop Antenna)





# Coverage Map (CH 59, B2H System Variant & Fixed Rooftop Antenna)

