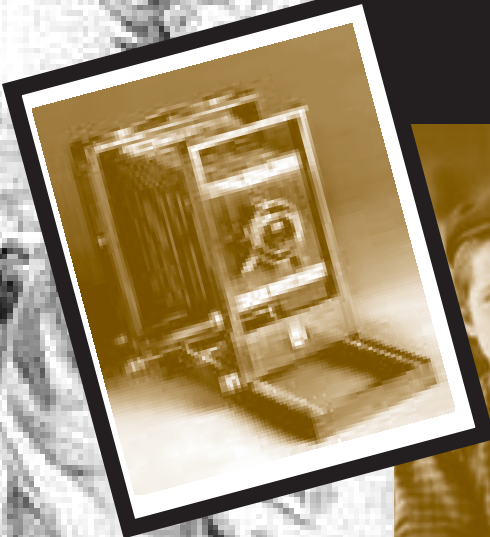




NEW JERSEY LEGISLATURE PASTIMES AND TRIVIA

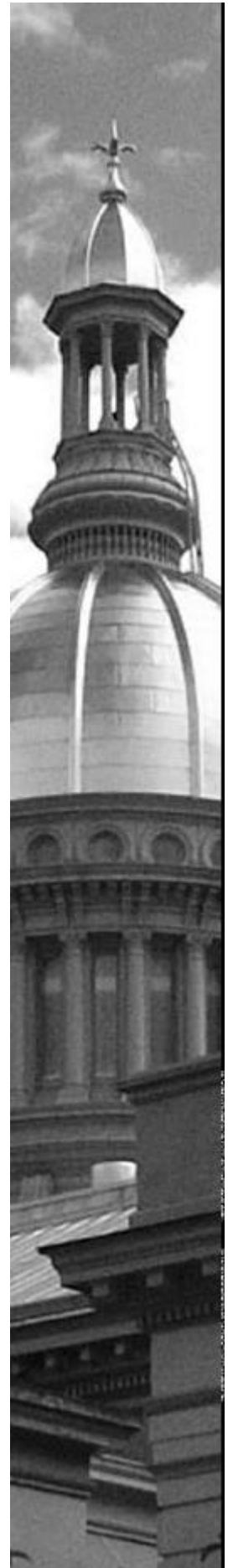


*Compliments
of your
State Legislature*

Any reuse of this material in part or its entirety,
must credit the New Jersey Office of Legislative Services, Office of Public Information.

Contents

About Your Legislature	2
Just for the Fun of It	4
New Jersey Firsts	4
Word Search	5
Jersey Jumble	6
Site Seeing	7
County Crossword	8
Trivia and Teasers	10
State House Word Builder	11
County Lines	12
Big News	13
Help “Bill” Become A Law	14
Get Involved	15
Answer Pages	16
Hotlines	19





About Your Legislature

THE BRANCHES OF GOVERNMENT

The government of the State of New Jersey, like that of the United States, is divided into three coequal branches: the legislative, the executive and the judicial. The principal function of the Legislature is to enact laws. The Executive branch (the Governor and State agencies) carries out the programs established by law. The Judiciary (the Supreme Court and lower courts) punishes violators, settles controversies and disputes, and is the final authority on the meaning and constitutionality of laws.

LEGISLATORS

The Legislature consists of two Houses: a 40-member Senate and an 80-member General Assembly. Senators must be at least 30 years old and residents of the state for at least four years prior to election. Members of the General Assembly must be at least 21 years old and state residents for at least two years. All legislators must live in the districts they represent.

While legislators spend a considerable amount of their time on legislative matters, service in the Legislature is considered to be part-time, and most legislators also hold other employment.

LEGISLATIVE DISTRICTS


Legislators are elected from 40 legislative districts of approximately equal population. The voters in each district elect one Senator and two members of the General Assembly. Every ten years, after the Federal census, the boundaries of the 40 districts are redrawn to maintain an equal population in each district.

LEGISLATIVE ELECTIONS

Legislative elections are held in November of each odd-numbered year. Members of the Assembly serve two-year terms. Senators serve four-year terms, except for the first term of a new decade, which is only two years. This 2-4-4 cycle allows for elections from new districts soon after each reapportionment.

LEGISLATIVE SESSIONS

The New Jersey Constitution provides that each Legislature is constituted for a term of two years, split into two annual sessions. Because the Constitution also specifies that all business from the first year may be continued into the second year, the distinction between the two annual sessions is more ceremonial than actual. The two-year legislative term begins at noon on the second Tuesday in January of each even-numbered year. At the end of the second year, all unfinished business expires.



In recent years, each House has held an average of 40 sessions a year, usually on Mondays and Thursdays. Members typically confer in party conferences prior to the voting sessions. The members also may convene for committee meetings, public hearings or quorums calls—an organizational procedure which allows for certain administrative activity to occur. The Senate and General Assembly occasionally meet in joint session, most often for an address by the Governor. Party conferences are closed to the public, and sometimes attendance at joint sessions is by invitation only. Otherwise, all activity is open to the public with no prior arrangements necessary.

LEGISLATIVE ORGANIZATION

Each House elects a presiding officer from among its members—the President of the Senate and the Speaker of the General Assembly. They are respectively first and second in line of succession to the governorship, and serve as Acting Governor when the Governor is out of the state.

The President and the Speaker have broad powers within their Houses. They decide the meeting schedules and the daily calendar of bills to be considered, preside over the sessions in their respective chambers, appoint committee chairs and members, refer bills to committees for consideration and direct the business of their Houses. The Senate elects a Secretary of the Senate and the General Assembly elects a Clerk of the General Assembly to supervise business operations.

Each party in each House also chooses party leaders: the Majority Leader, the Minority Leader, assistant leaders and whips. The party leaders help develop party policy on the issues before the Legislature.

Each House establishes a number of standing reference committees to review legislation. Much of the discussion on the merits of a bill takes place in committee. Representatives of interest groups and members of the public are generally given the opportunity to present their views at committee meetings.

LEGISLATIVE POWERS

The chief function of the Legislature is to enact laws. A proposal to make a new law, or to change or repeal an existing law, is presented to the Legislature as a bill. To become law, a bill must pass both Houses by a majority vote and be approved by the Governor.

The Legislature can also propose amendments to the New Jersey Constitution. Such an amendment must be passed by a vote of 3/5 of each House (24 votes in the Senate and 48 votes in the Assembly). No action by the Governor is required. If passed, the proposed amendment is placed on the ballot in November for a public vote. An amendment may also be presented to the voters if the Legislature passes it two years in a row by a simple majority vote.

Just for the fun of it..

New Jersey Firsts

1. New Jersey was the first state to ratify the --
a. Bill of Rights b. Emancipation Proclamation c. Equal Rights Amendment
2. This “stop” on the “Underground Railroad” was the first African-American community to become a municipality. Can you name it?
a. Batsto b. Camden c. Lawnside
3. Which of the following firsts happened in New Jersey? (*May be more than one.*)
a. Baseball Game b. Inter-collegiate Football Game c. Pro Basketball League
4. Thomas Edison invented all of the following except --
a. Lightbulb b. Refrigerator c. Moving Pictures d. Phonograph
5. Thomas Mundy Peterson was the first African-American to cast a vote. Where did he do it?
a. Perth Amboy b. Elizabeth c. New Brunswick
6. All of these food inventions had their first home in New Jersey. Can you put them in order of the earliest to the most recent?
a. “M&M’s”® b. Campbell® Soup c. Minute Steak d. Oyster Crackers
7. Margaret Gorman was crowned as the first Miss America in Atlantic City in what year?
a. 1908 b. 1921 c. 1932
8. The first trans-continental telephone call originated from --
a. the State House (Trenton) b. Bell Labs (Holmdel) c. Newark City Hall
9. In 1925, New Jersey was the first state to use a traffic circle. Where was it located?
a. Freehold b. Pennsauken c. Trenton
10. Can you put these New Jersey-based products in order of earliest to most recent according to when they first became available to the public?
a. Colgate® Toothpaste b. Band-Aids® c. Pepcid® AC d. Listerine®

(Answers on page 16)

Word Search

Find the following hidden words:

Appropriations...Automobile...Business...Community...Education...Health Care
Insurance...Investing...Gambling...Jobs...Open Space...Pensions
Prescriptions...Property...Public Safety...Resources...Shore...Taxes...Turnpike

J	P	E	L	I	B	O	M	O	T	U	A	G	T	M
B	R	F	G	A	M	B	L	I	N	G	N	L	S	Y
M	O	B	L	O	M	P	E	N	S	I	O	N	S	T
W	P	U	B	E	D	U	C	A	T	I	O	N	E	I
R	E	S	O	U	R	C	E	S	W	I	U	Z	N	N
Q	R	V	T	W	B	X	E	J	T	N	P	R	I	U
H	T	H	W	T	C	V	Q	A	R	S	W	P	S	M
K	Y	T	U	R	N	P	I	K	E	U	A	E	U	M
L	J	K	D	I	C	R	Z	B	T	R	X	V	B	O
O	P	E	N	S	P	A	C	E	N	A	R	Q	M	C
H	Y	G	H	O	O	M	R	X	T	N	S	B	O	J
U	W	O	R	H	E	A	L	T	H	C	A	R	E	O
C	R	P	I	Q	I	H	U	Y	W	E	G	E	T	R
E	P	R	E	S	C	R	I	P	T	I	O	N	S	Y
A	H	Y	T	E	F	A	S	C	I	L	B	U	P	J

(Answers on page 16)

Jersey Jumble

Unscramble the jumbled words, one letter to each square.
Arrange the letters in the circled boxes to answer the question below.

B E S S A M L Y

○ □ □ □ □ ○ □ □

C R I T I D S T

□ □ □ □ □ □ ○ □

T E A N E S

○ □ □ ○ □ □

L G D O N H I F C

□ □ ○ □ □ □ □ ○ □ □

N O H E Y E B E

○ □ ○ □ □ □ □ □ ○ □

E R D K A O

□ ○ □ □ □ ○

C L O I T I P S

□ □ □ □ □ □ ○ ○

What do banks and government have in common?

○ ○ ○ ○ ○ ○ and ○ ○ ○ ○ ○ ○ ○ ○

(Answers on page 17)

Site Seeing

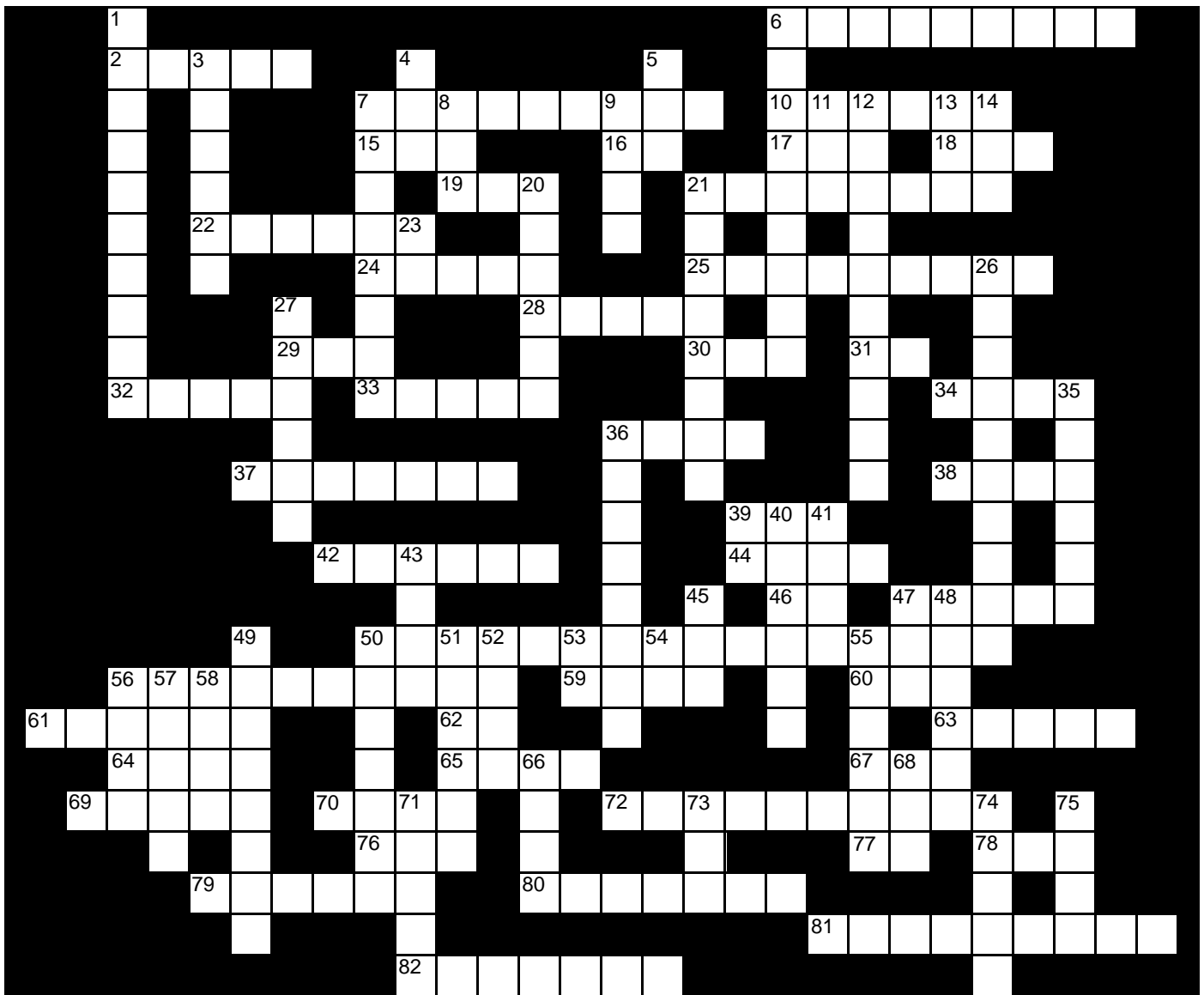
Can you name these famous New Jersey sites?



Photos courtesy of New Jersey Office of Travel and Tourism

(Answers on page 17)

County Crossword



ACROSS

- 2. The 1664 Elizabethtown Purchase in this county led to the first English settlement in America.
- 6. County home of Rutgers University
- 7. County made famous by the Lindbergh Case

- 10. County home of the State capital
- 15. Old fashioned word for "over"
- 16. Opposite of "out"
- 17. Cleaving tool
- 18. Hearing aid
- 19. Newspaper classifieds
- 21. 1930's Atlantic City

- inspired board game
- 22. County named for a revolutionary war hero & doctor
- 24. Letter closing: Sincerely -----
- 25. Lapel item of identification
- 28. County name same as site of Massachusetts witch trials
- 29. Center of a storm
- 30. Possess

31. Contraction meaning "I am"
32. Nudged aside
33. County where Newark Airport is located
34. In a hurry
36. State cultural organization: Council on the ----
37. Victorian seashore resort
38. ---- money: start-up funds
39. Consumed
42. County home of AT&T
44. Reposition
46. Myself
47. County by the sea
50. War of US independence
56. US form of government
59. Famous pirate captain who visited Northern NJ
60. Common shade tree
61. Minimum number of members present to conduct business
62. Abbr. for overtime
63. NJ folklore character: The Jersey -----
64. Husband or wife
65. Not found
67. Landmark abortion rights case: --- v. Wade
69. Taxi fare calculator
70. Expression of preference in an election
72. County home of NJ's historic glassmaking industry
76. A player on NJ's NBA basketball team
77. Abbr. for year
78. Computer memory abbr.
79. One of the four original counties in colonial NJ
80. County name derived from Native American word meaning "valley"
81. Official State bird
82. Capital of NJ
- DOWN**
1. County home of Clara Barton & James Fenimore Cooper
3. Frequent source of family discord
4. Expected birth time: --- date
5. Home state candidate: favorite ---
6. 1973 Assemblyman Francis ----- introduced legislation to establish the state bug
7. Official NJ insect that uses flowers to make a syrup
8. Powerful gun association
9. Coin collected to restore the State House dome
11. "outer" in anatomy
12. One of the two primary political parties
13. Slippery fish
14. Beam of light
20. Northernmost county
21. Shore county home of the Sandy Hook lighthouse
23. Opposite of "yes"
26. Southwestern county and NJ's chief food producers
27. Official State tree
35. County named after a colonial explorer
36. County home to a famous gaming destination
39. Descartes' quote: "I think, therefore I --".
40. Famous red NJ "fruit"
41. Eternity: for----
43. Abbr. for rhetorical
45. --- off: sleep
47. Bird: A symbol of wisdom
48. County home of the WWII New York shipyards
49. County location of the Duke Estate
50. Evaluate as superior
51. Official State flower
52. Prefix: eight
53. Abbr. for Britain
54. Form of validation
55. Term for annually
56. NJ State House golden topper
57. Greek Muse of lyric poetry and mime
58. Unable to vocalize
66. Cease
68. Paddle
71. Doctrine widely held to be true
73. Military abbr. for missing person
74. Write legislation
75. End to a Christian prayer

(Answers on page 17)

Trivia and Teasers

- Captain Kidd's treasure is rumored to be buried in the marsh areas near --
 - Belmar
 - Cape May
 - Sandy Hook
- The site of General George Washington's two winter encampments during the Revolutionary War is located in --
 - Morristown
 - Titusville
 - Stanhope
- The official residence of the Governor of NJ is located in Princeton and called --
 - Trent House
 - Drumthwacket
 - Stockton Hall
- All of these writers were born in New Jersey. Can you match them to their famous works?
 - Dorothy Parker
 - James Fenimore Cooper
 - Allen Ginsberg
 - Joyce Kilmer
 - Howl*
 - The Last of the Mohicans*
 - Trees*
 - Big Blonde*
- Where is the home of the "New Jersey Devil?"
 - the Meadowlands
 - the Pine Barrens
 - the Watchung Mountains
- The Monopoly® game board uses street names from --
 - Ocean City
 - Atlantic City
 - Sea Isle City
- Can you match these famous New Jersey performers with their nickname?
 - Bill Basie
 - Sarah Vaughan
 - Frank Sinatra
 - Bruce Springsteen
 - The Boss
 - Old Blue Eyes
 - Sassy
 - The Count
- In Margate, you can climb inside Lucy, a 65-foot, 100-year-old house, built to look like --
 - an elephant
 - a seashell
 - a whale
- How many exits are there on the New Jersey Turnpike?
 - 16
 - 24
 - 32
- All of these celebrities are from New Jersey. Can you match them to their famous works?
 - Jack Nicholson
 - Meryl Streep
 - Susan Sarandon
 - Danny DeVito
 - Sophie's Choice*
 - Taxi*
 - Five Easy Pieces*
 - Thelma and Louise*
- What is the State motto?
 - The Jewel is Jersey
 - Goodness from the Land
 - Liberty and Prosperity
- New Jersey has an official one of each of the following except --
 - Dinosaur
 - Animal
 - Song
 - Dance

(Answers on page 18)

State House Word Builder

Use only the letters S T A T E H O U S E to make as many words as you can. Put each word in the column with other words beginning with the same letter.

S

1. _____
2. _____
3. _____
4. _____
5. _____
6. _____
7. _____
8. _____
9. _____
10. _____
11. _____
12. _____

T

1. _____
2. _____
3. _____
4. _____
5. _____
6. _____
7. _____
8. _____
9. _____
10. _____
11. _____
12. _____

A

1. _____
2. _____
3. _____
4. _____

T

1. _____
2. _____
3. _____
4. _____

E

H

1. _____
2. _____
3. _____
4. _____
5. _____
6. _____
7. _____
8. _____
9. _____
10. _____
11. _____
12. _____

O

1. _____
2. _____
3. _____
4. _____

U

1. _____
2. _____

S

E

(Answers on page 18)

County Lines

Can you unscramble the names of the New Jersey counties?
Write them on the lines provided.

MORRIS

Delaware River

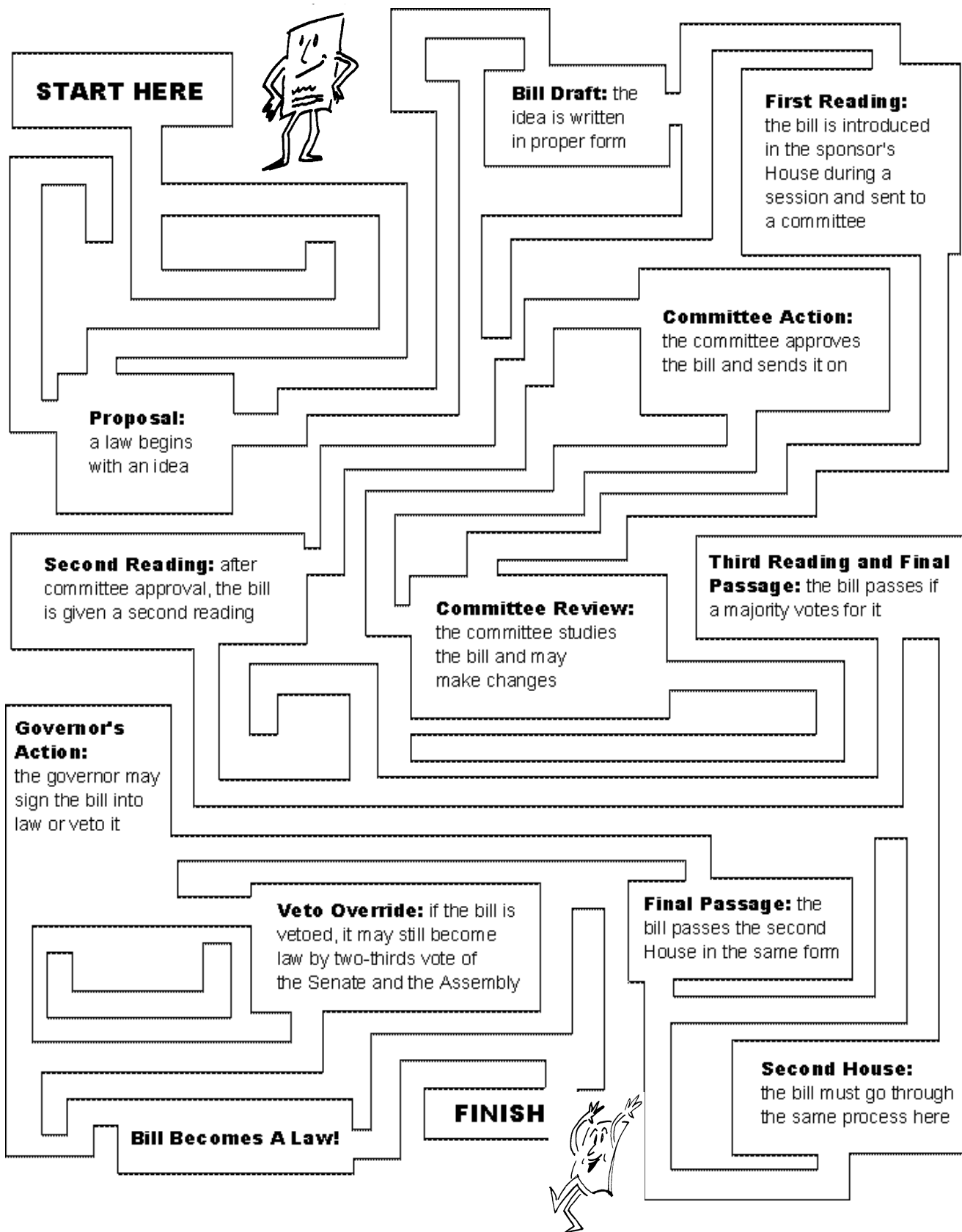
Trenton

Atlantic Ocean

N
W ← → E
S

(Answers on page 18)

Help "Bill" Become A Law



(Answers on page 18)

Get Involved!

Your legislators represent you, and the laws enacted by them are intended to foster the health, safety and welfare of all New Jersey citizens. As active participants in the legislative process, we can truly make State government one for and by the people. Here's what you can do:

LOOK, LISTEN AND LEARN

Stay informed of public policy issues. Read the papers. Watch the news. Legislative sessions and major speeches are often televised. Check out weekly television shows on State issues. Hear other opinions -- there are always two sides to an issue. Start or join a current events discussion group.

GET SPECIFICS

The New Jersey Legislature makes its information available free of charge. Even the call is free for residents! The non-partisan staff of the Legislative Information and Bill Room can answer questions about legislative activity and supply copies of bills, a legislative calendar and many helpful publications. Legislative information also is available from the Legislature's web site. www.njleg.state.nj.us

WRITE A LETTER, CALL OR E-MAIL

Your legislators value your opinions, but it's up to you to contact them. Phone numbers and addresses for your three representatives are available from the Legislative Information and Bill Room and the Legislature's web site. Address letters to "Honorable (first and last name)." The salutation should read "Dear Senator (last name)," or "Dear Assemblyman/Assemblywoman (last name)."

JOIN FORCES

Join a group with similar concerns as yours. If none exists, start one! Sign or start a petition. Attend rallies and public demonstrations to show support.

VISIT THE SITE OF LEGISLATIVE ACTIVITY

Public hearings and committee meetings are the best opportunities to observe and participate in public policy debates. Most bills are reviewed by a legislative committee during an open meeting at the State House Annex. You can learn more about the lawmaking process during a free State House tour. Get a group together and come visit. Call 609-633-2709 for scheduling help.

VOTE!

Elections are a chance to express approval or dissatisfaction. Contact your county election office for registration and absentee ballot information.

(Phone numbers are on the last page.)



Answer Pages

New Jersey Firsts (pg. 4)

- | | | |
|-------------|--------------------|---------------------|
| 1. a | 5. a | 8. a |
| 2. c | 6. d-1848, b-1895, | 9. b |
| 3. a, b & c | a-1941, c-1946 | 10. a-1873, d-1914, |
| 4. b | 7. b | b-1921, c-1995 |

Word Search (pg. 5)

J	P	E	L	I	B	O	M	O	T	U	A	G	T	M
B	R	F	G	A	M	B	L	I	N	G	N	L	S	Y
M	O	B	L	O	M	P	E	N	S	I	O	N	S	T
W	P	U	B	E	D	U	C	A	T	I	O	N	E	I
R	E	S	O	U	R	C	E	S	W	I	U	Z	N	N
Q	R	V	T	W	B	X	E	J	T	N	P	R	I	U
H	T	H	W	T	C	V	Q	A	R	S	W	P	S	M
K	Y	T	U	R	N	P	I	K	E	U	A	E	U	M
L	J	K	D	I	C	R	Z	B	T	R	X	V	B	O
O	P	E	N	S	P	A	C	E	N	A	R	Q	M	C
H	Y	G	H	O	O	M	R	X	T	N	S	B	O	J
U	W	O	R	H	E	A	L	T	H	C	A	R	E	O
C	R	P	I	Q	I	H	U	Y	W	E	G	E	T	R
E	P	R	E	S	C	R	I	P	T	I	O	N	S	Y
A	H	Y	T	E	F	A	S	C	I	L	B	U	P	J

Jersey Jumble (pg. 6)

- 1) ASSEMBLY 4) GOLD FINCH 7) POLITICS
 2) DISTRICT 5) HONEY BEE
 3) SENATE 6) RED OAK

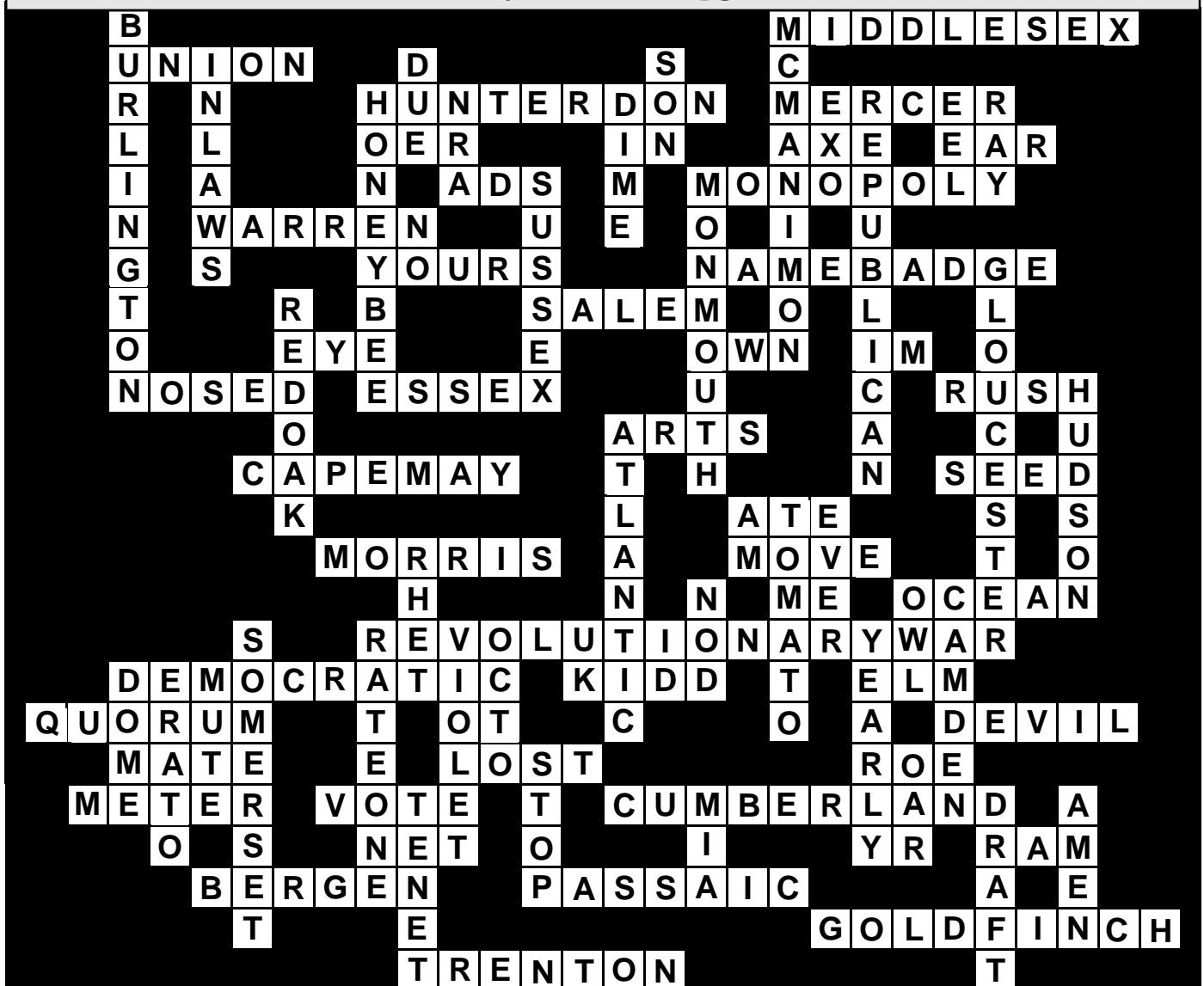
C H E C K S and

B A L A N C E S

Site Seeing (pg. 7)

- 1) Liberty State Park 5) Atlantic City Boardwalk
 2) Delaware Water Gap 6) Princeton University
 3) Victorian Cape May 7) New Jersey State House
 4) Barnegat Lighthouse 8) Ellis Island

County Crossword (pg. 8)



Answer Page

Trivia and Teasers (pg. 10)

- | | | | |
|--------|--------|---------|-------|
| 1. a | 5. b | 8. a | 11. c |
| 2. a | 6. b | 9. b | 12. c |
| 3. b | 7. a-4 | 10. a-3 | |
| 4. a-4 | b-3 | b-1 | |
| b-2 | c-2 | c-4 | |
| c-1 | d-1 | d-2 | |
| d-3 | | | |

State House Word Builder (pg. 11)

S

sat	she	shout/shouts	stash
seat/seats	sheet/sheets	shut/shuts	stout
see/sees	shoe/shoes	so	
set/sets	shot/shots	south	

T

taste/tastes	test/tests	thou	tot/tots
tea/teas	that	thus	tote/totes
tease/teases	the	to	
tee/tees	thee	toast/toasts	
teeth	those	toe/toes	

A

as	ash/ashes	at	ate
----	-----------	----	-----

E

ease/eases	eat/eats	estate/estates
------------	----------	----------------

H

has	hate/hates	hoe/hoes	hot
haste	he	hose/hoses	hue/hues
hat/hats	heat/heats	host/hosts	hut/huts

O

oat/oats	oh	oust/ousts	out
----------	----	------------	-----

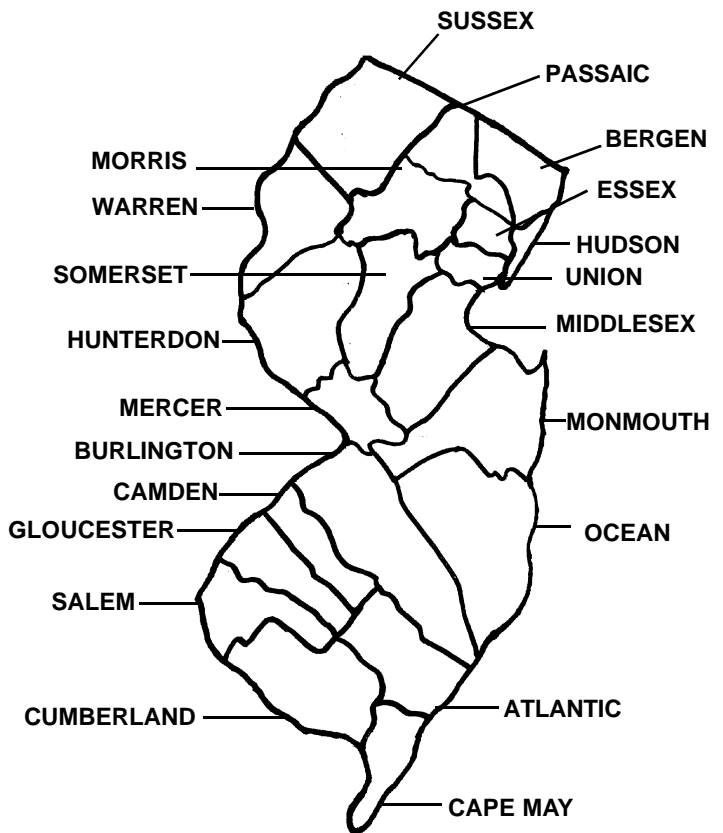
U

us	use/uses
----	----------

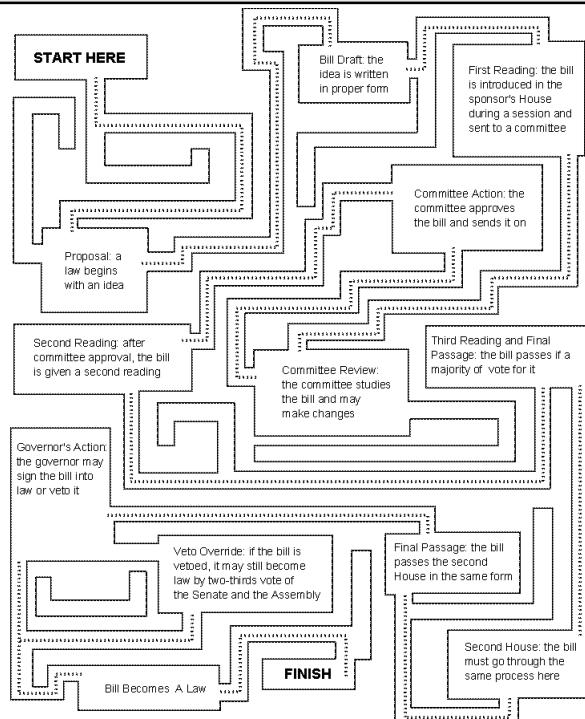
Big News (pg. 13)

- | | | |
|----------|------|-------|
| 1. b | 5. a | 9. b |
| 2. a | 6. a | 10. c |
| 3. c | 7. b | 11. a |
| 4. a & c | 8. a | 12. c |

County Lines (pg. 12)



Help "Bill" Become A Law (pg. 14)



Hotlines

Legislative Information (toll-free in NJ)	1-800-792-8630 609-292-4840
Hearing Impaired Users (TDD) (toll-free in NJ)	1-800-257-7490 609-777-2744
State House Tour Office	609-633-2709
Office of Travel and Tourism	1-800-847-4865
NJ Department of Military and Veterans' Affairs	609-530-6957
NJ Higher Education Student Assistance Authority (Information on Financial Aid, Student Loans or Scholarships)	1-800-792-8670
NJ Veterans' Benefits Information Hotline	1-888-865-8387
Taxpayer Hotline (Assistance concerning State taxes)	609-292-6400
Hearing Impaired Users (TDD) (toll-free in NJ, NY, PA)	1-800-286-6613 609-984-7300
TAXFAX for forms	609-826-4500
Property Tax Reimbursement Infoline	1-800-882-6597
Automated Tax Information System (toll-free in NJ)	1-800-323-4400 609-826-4400
Motor Vehicle Commission (General information)	609-292-6500 609-292-7500
NJ Transit (Schedules and general information)	973-275-5555
Governor's Office of Volunteerism	1-800-286-6528
NJ Division of Elections (Voter registration information)	609-292-3760
Atlantic County	609-343-2246
Bergen County	201-336-6100
Burlington County	609-265-5111
Camden County	856-661-3555
Cape May County	609-465-1050
Cumberland County	856-453-5801
Gloucester County	856-384-4500
Essex County	973-621-5061
Hudson County	201-795-6555
Hunterdon County	908-788-1190

(continued on the next page)



Mercer County	609-989-6769
Middlesex County	732-745-3471
Monmouth County	732-431-7785
Morris County	973-285-6715
Ocean County	732-929-2167
Passaic County	973-881-4515
Salem County	856-935-7510
Somerset County	908-231-7084
Sussex County	973-579-0950
Union County	908-527-4123
Warren County	908-475-6313

Web sites:

The New Jersey State Legislature: www.njleg.state.nj.us

New Jersey Online, Executive Branch Information: www.state.nj.us

New Jersey Courts Online: www.judiciary.state.nj.us