



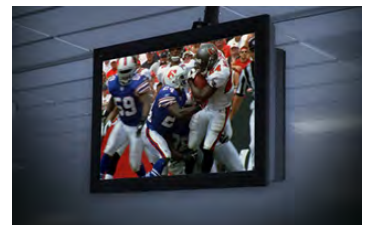
history

Launched in **1992**

CNN Airport Network is now offered in 41 of the nation's busiest airports, covering more than 1,900 gates and other viewing areas. Our success is based on our excellence in programming, our technical expertise, and our response to passenger, airport and airline needs.



Programming includes breaking news, business and financial reports, sports updates, weather, lifestyle and travel segments. Also featured is live sporting events from the NFL, NBA and college football.





CNN Airport Network is the **only live, satellite-delivered airport television service** that provides up-to-the-minute news, information and entertainment to airline passengers.

standards

CNN Airport Network broadcasts 24 hours a day, seven days a week, with round-the-clock technical and editorial staffing. Because we broadcast in public waiting areas CNN Airport Network **will not air graphic video coverage of commercial air accidents or incidents**, unless the incident involves a national emergency or threat to security. CNN Airport Network also **screens out material that is either sexually explicit or portrays graphic violence.**



service

92%

of viewers believe CNN Airport Network enhances the airport environment

90%

of viewers feel CNN Airport Network helps them stay in touch with what's happening in the world

87%

of viewers believe having CNN Airport Network available makes the time they spend in the airport more worthwhile

Source: 2004 Nielsen Survey



With increased security requirements causing passengers to spend more time waiting at the gate, CNN Airport Network provides airlines and airports a significant opportunity to **improve customer service and satisfaction.**

- keeps passengers informed and entertained while traveling
- reduces stress caused by travel
- shortens perceived waiting time



opportunities

Local commercial time is provided for your unique, custom messages and revenue-producing advertising, creating a **direct line of communication** with air travelers.

- additional revenue stream through local advertising sales
- promotion for concessions within the airport
- promotion for your airport, city and region
- public service information on security, accessibility and other issues



installation



Take advantage of CNN's technical expertise, system design experience, buying power and vendor relationships to put together a top notch television network in your airport.



- latest display screen technology-large LCD flat panel display screens
- select either ceiling mounted or floor stand display screen installation
- audio distributed from ceiling mounted speakers located directly above passenger seating areas and away from passenger transaction areas
- program audio level automatically tracks the ambient noise level in each viewing area to deliver intelligible, non-intrusive audio
- audio system interfaces with airport and airline paging systems to enable passengers to hear pages and boarding announcements
- viewing area equipment placed with consideration for those who might prefer a quiet seating zone within the gate hold room area
- satellite system installed to receive live programming 24/7
- complete turnkey equipment and installation package offered to airports
- technical support available from CNN 24/7





programming

monday-friday

6:00a CNN American Morning
9:00a CNN Headline News *
10:00a CNN Headline News*
11:00a CNN Headline News*
12:00p CNN Headline News *
1:00p CNN Headline News*
2:00p CNN Headlines News*
3:00p CNN Newsroom
4:00p CNN Situation Room
6:00p Lou Dobbs Tonight
7:00p CNN Situation Room
8:00p Paula Zahn Now
9-12a NFL(Mon)/ NBA on TNT (seasonal)
9:00p Larry King Live
10:00p Anderson Cooper 360
12:00a HLN Showbiz replay *
1:00a Anderson Cooper 360
3:00a Larry King Live
4:00a Lou Dobbs Tonight
5:00a CNN Headline News

saturday

6:00a CNN Headline News *
7:00a CNN Saturday Morning
9:30a Open House
10:00a CNN Newsroom
11:00a CNN Newsroom
12:00p CNN Newsroom
1:00p CNN In the Money
2:00p CNN Headline News *
3:00p CNN Presents
4:00p CNN Headline News *
5:00p CNN Headline News*
6:00p HLN Prime News *
7:00p This Week at War
8:00p CNN Presents *
9:00p Larry King Live
10:00p CNN Saturday Night
11:00p HLN Showbiz *
12:00a Larry King Live
1:00a CNN Newsroom (replay)
2:00a CNN Presents
3:00a CNN Headline News *
4:00a CNN Headline News *
5:00a CNN Headline News

sunday

6:00a CNN Headline News *
7:00a CNN Sunday Morning
10:00a Reliable Sources
11:00a Late Edition with Wolf Blitzer
1:00p This Week at War
2:00p CNN Headline News *
3:00p CNN In the Money
(NFL Football in Season)
4:00p CNN Headline News *
5:00p CNN Headline News*
6:00p HLN Prime News *
7:00p CNN Newsroom
8:00p CNN Presents *
9:00p Larry King Live
10:00p CNN Newsroom
11:00p HLN Showbiz *
12:00a Larry King Live
1:00a CNN Newsroom (replay)
2:00a CNN Presents
3:00a Larry King Live
4:00a CNN Headline News *
5:00a CNN Headline News

***Effective 09/04/2006 All Times Eastern. Programming subject to preemption.

*Headline News



airports

Albany International
Anchorage International
Asheville Regional Airport
Atlanta Hartsfield-Jackson International
Bermuda International
Boston Logan International
Chicago O'Hare International
Cincinnati/Northern Kentucky International
Dallas/Ft. Worth International
Dayton International
Denver International
Detroit Metro Wayne County International
Houston Bush Intercontinental
Houston William P. Hobby Airport
Huntsville Madison County Airport
Jacksonville International
Kansas City International
Knoxville McGhee Tyson Airport
Lubbock International
Memphis International
Miami International
Minneapolis/St. Paul International
Moline Quad City International
Myrtle Beach International
Nashville International
New York John F. Kennedy International
New York LaGuardia Airport
Newark Liberty International
Orlando International
Philadelphia International
Phoenix Sky Harbor International
Raleigh/Durham International
Saint Louis Lambert International
Salt Lake City International
San Francisco International
Sarasota Bradenton International
Savannah International
Seattle -Tacoma International
Tallahassee Regional Airport
Washington Dulles International
Washington Reagan National Airport