

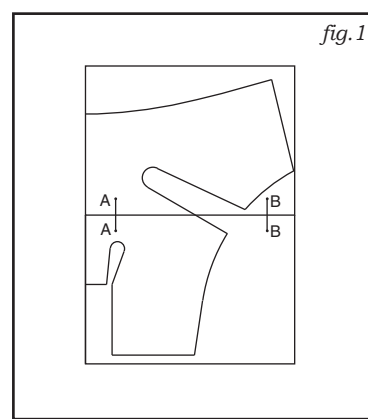
OK whether you are a beginner or an experienced rider trying to land your first 540 rodeo, you have found a simple way to ease your pain for very little cost. The Bumpad is designed to simply fit on the inside of your snowboard trousers and with the aid of the legs it should stay in position and provide comfort all day without moving.

The first step is to head to your local sports store and purchase a camping mat. These do vary in thickness, obviously the thicker the better, so choose the one you like and head to the checkout armed with your money and a smile on your face knowing you will be protected this season.

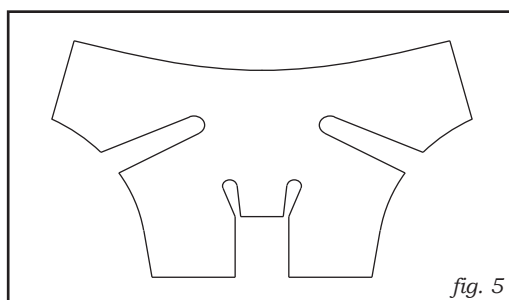
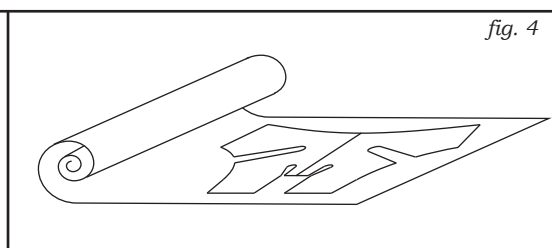
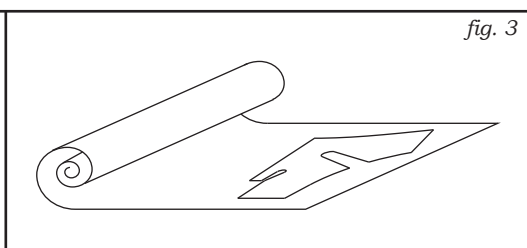
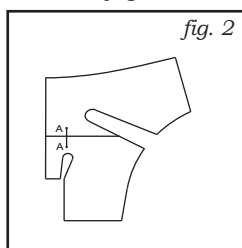
MAKE THE PATTERN.

On returning home take sheets 2 and 3 of this document and tape them together aligning marks A and B as shown in fig.1. Some trimming may be required of one sheet to see the line.

This will now form half the pattern, as it is symmetrical the pattern can be used again as the second half.



The next step is to carefully cut out the pattern to look like that shown in fig.2 below. Once complete, roll out your camping mat as it is time to transfer the pattern on to the foam. Place the pattern to the edge of the foam as shown in fig. 3, carefully mark around the pattern using a ball point pen. You now have half of the Bumpad marked out, by flipping the pattern over and positioning it to the centreline you can now mark out the second half as shown in fig. 4. Now take your scissors and carefully cut out the complete Bumpad profile to resemble that in fig. 5.



So there you have it, now try on your snowboard trousers and try the fit of the Bumpad. It may feel a little strange at first but once the foam adapts to your form you can make any final adjustments to the profile.

Have a great season.....

Disclaimer:

Remember! Snowboarding is a dangerous sport. Take care and pay attention at all times. Never, under any circumstances, take risks that could lead to personal injury to yourself or others. Always look where you are going and always check behind you before you make a turn.

B



A



B



A

