



WHO / UNICEF

**Joint Monitoring Programme
for Water Supply and Sanitation**

Coverage Estimates

Improved Drinking Water

Updated in June 2006

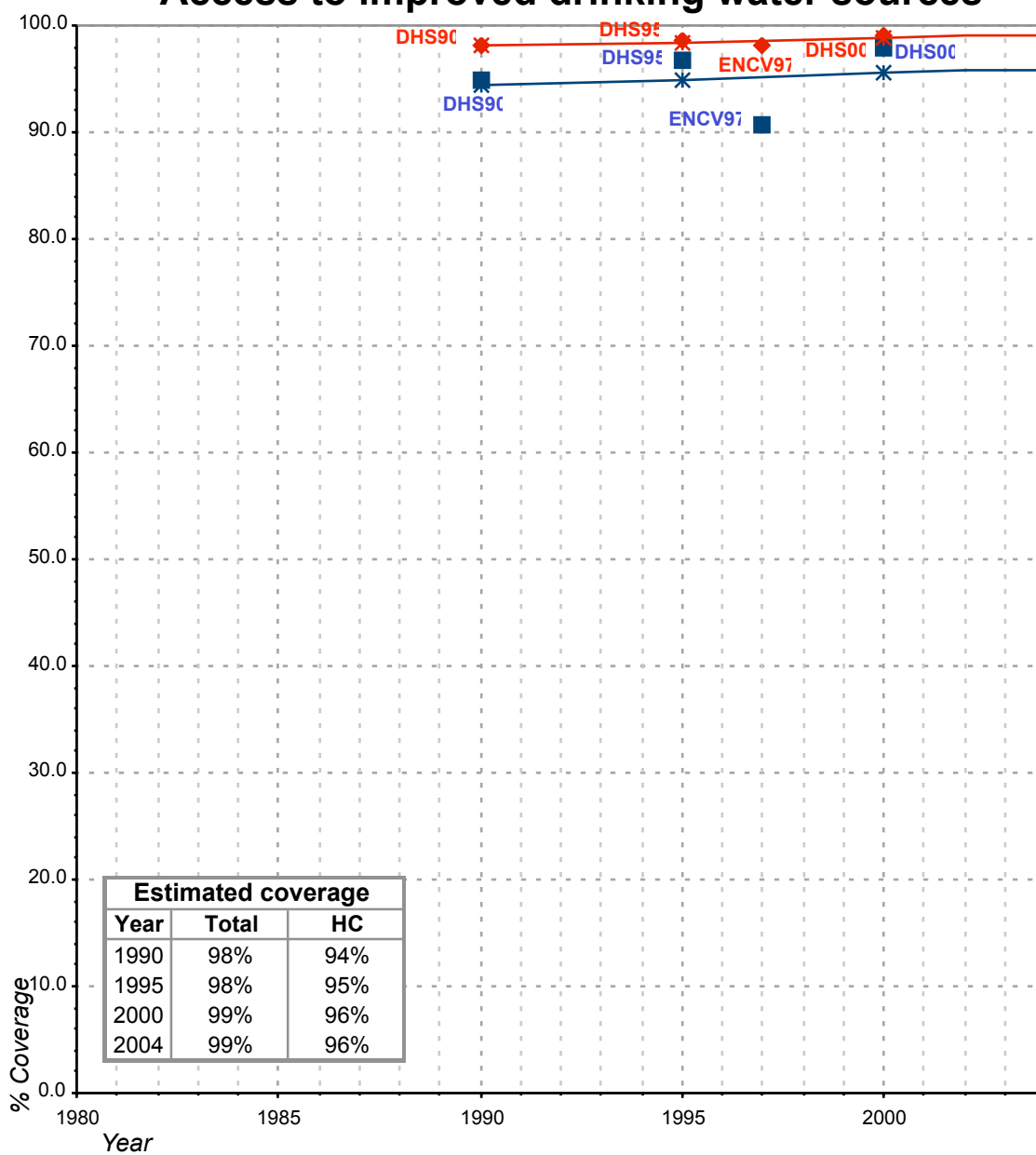
Colombia

Urban and Rural Water - Colombia

Survey				Estimate										
DHS	1990		DHS	1995		ENCV	1997		DHS	2000		FORM-6/WHO	1999	
(Population in thousands)														
WATER	Urban	Rural	WATER	Urban	Rural	WATER	Urban	Rural	WATER	Urban	Rural	WATER	Urban	Rural
Red publica	94.3	16.0	Red publica	94.9	11.9	Acueducto publico dentro de la vivienda	90.1	18.0	Red publica (acueducto)	96.5	27.3	Population served with household connection	25'031	5'542
Acueducto veredal	0.7	27.2	Acueducto veredal	1.8	27.3	Acueducto comunal o veredal dentro de la vivienda	0.5	32.5	Acueducto privado	1.4	22.8	Population without household connection but with reasonable access to a public water point		
Otra fuente con tuberia	2.3	22.4	Otra fuente con tuberia	0.8	17.1	Acueducto publico fuera de la vivienda, pero en el lote o terreno	6.4	6.8	Pila publica	0.1	0.2	Total population served	25'031	5'542
Pila publica	0.3	1.7	Pila publica	0.5	0.4	Acueducto comunal o veredal fuera de la vivienda	0.2	19.4	Pozo o aljibe	1.3	18.7	Total population unserved	3'030	6'411
Pozo o aljibe	0.4	13.4	Pozo o aljibe	0.5	20.8	Acueducto publico fuera de la vivienda y del lote o terreno	0.2	0.3	Rio, acqueuia, manantial	0.0	24.6			
Rio, acqueuia, manantial	0.2	14.5	Rio, acqueuia, manantial	0.1	14.6	Acueducto comunal o veredal fuera de la vivienda y del lote o terreno	0.0	0.4	Agua lluvia	0.4	4.1			
Camion, tanque aguatero	0.4	0.4	Agua lluvia	0.3	4.9	Pozo con bomba	0.1	1.7	Camion tanque aguatero	0.1	1.2			
Agua lluvia	0.3	1.3	Camion	0.8	1.1	Pozo sin bomba, aljibe {tank} o barreno {drilled hole}	0.8	9.5	Otro	0.2	1.0			
Otro	1.2	2.9	Sin informacion/ no sabe	0.3	1.2	Agua lluvia	0.2	1.8						
Missing	0.0	0.0				Pila publico	0.1	1.1						
						Carrotanque	0.5	1.0						
						Aguatero	0.1	0.0						
						Rio, quebrada, manantial, nacimiento	0.0	6.4						
						Otro	0.8	1.1						
TOTAL	100.1	99.8	TOTAL	100	99.3	TOTAL	100.0	100.0	TOTAL	100	99.9	TOTAL	28'062	11'953
All wells/ cistern	0.40	13.40	All wells/ cistern	0.5	20.8	All wells/ cistern	0.8	9.5	All wells/ cistern	1.3	18.7			
protected wells or cisterns (=estimated at 50%)	0.20	6.70	protected wells or cisterns (=estimated at 50%)	0.3	10.4	protected wells or cisterns (=estimated at 50%)	0.4	4.8	protected wells or cisterns (=estimated at 50%)	0.7	9.4			
Improved drinking water (excl. wells)	97.90	68.60	Improved drinking water (excl. wells)	98.3	61.6	Improved drinking water (excl. wells)	97.8	82.0	Improved drinking water (excl. wells)	98.4	54.4			
Improved drinking water (incl. Wells)	98.30	82.00	Improved drinking water (incl. Wells)	98.8	82.4	Improved drinking water (incl. Wells)	98.6	91.5	Improved drinking water (incl. Wells)	99.7	73.1			
Access to improved water supply (incl. % protected wells)	98%	75%	Access to improved water supply (incl. % protected wells)	99%	73%	Access to improved water supply (incl. % protected wells)	98%	87%	Access to improved water supply (incl. % protected wells)	99%	64%	Population with safe drinking water	89%	46%
% House connections	95%	43%	% House connections	97%	39%	% House connections	91%	51%	% House connections	98%	50%	% House connections	89%	46%
Source: Encuesta de Prevalencia, Demografia y Salud, 1990			Source: Colombia Demographic & Health Survey 1995			Source: Desigualdades en el acceso, uso y gasto con el agua potable en America Latina y el Caribe, Colombia, PAHO, Feb 2001, using data of ENCV 1997			Source: Salud sexual y reproductiva en Colombia, Encuesta Nacional de Demografia y Salud, 2000			Source: Global Water Supply and Sanitation Assessment 2000. Water Supply and Sanitation Sector Questionnaire - 1999 (Form 6 -sent to WHO)		

Colombia			DRINKING WATER							
			URBAN				RURAL			
			HC		Total		HC		Total	
Source	Code	Year	Used for estimates	Not used for estimates	Used for estimates	Not used for estimates	Used for estimates	Not used for estimates	Used for estimates	Not used for estimates
The International Drinking Water Supply and Sanitation Decade. Review of National Baseline Data (as at December 1980). WHO 1984	WHO80	1980		74.0		100.0				79.0
The International Drinking Water Supply and Sanitation Decade. Review of National Progress (as at December 1983). WHO 1986.	WHO83	1983		77.0						
The International Drinking Water Supply and Sanitation Decade. Review of Mid-Decade Progress (as at December 1985). WHO 1987.	WHO85	1985		75.0						20.0
The International Drinking Water Supply and Sanitation Decade. Review of National Progress (as at December 1988). WHO 1990.	WHO88	1988		66.0		88.0				87.0
The International Drinking Water Supply and Sanitation Decade. End of Decade Review (as at December 1990). WHO1992.	WHO90	1990		66.0		87.0				82.0
Encuesta de Prevalencia, Demografia y Salud, 1990	DHS90	1990	95.0		98.1		43.2		75.3	
Water Supply and Sanitation Sector Monitoring Report 1993 (Sector Status as of 31 December 1991)	JMP93	1991				85.0				
Water Supply and Sanitation Sector Monitoring Report - 1996. Sector Status as of 31 December 1994. WHO/UNICEF 1996.	JMP96	1993				85.0				48.0
Colombia Demographic & Health Survey, 1995.	DHS95	1995	96.7		98.6		39.2		72.5	
Desigualdades en el acceso, uso y gasto con el agua potable en America Latina y el Caribe, Colombia, PAHO, Feb 2001, using data of ENCV 1997	ENCV97	1997	90.6		98.2		50.5		86.8	
Global Water Supply and Sanitation Assessment 2000. Water Supply and Sanitation Sector Questionnaire - 1999. (Form 6 sent to WHO)	JMP99	1998		89.0		98.0		46.4		73.0
Salud sexual y reproductiva en Colombia, Encuesta Nacional de Demografia y Salud, 2000	DHS00	2000	97.9		99.1		50.1		63.8	

Colombia - urban - Access to improved drinking water sources



Estimated coverage		
Year	Total	HC
1990	98%	94%
1995	98%	95%
2000	99%	96%
2004	99%	96%

Total improved access

Household connections (HC)

◆ Used for estimates

■ Used for estimates

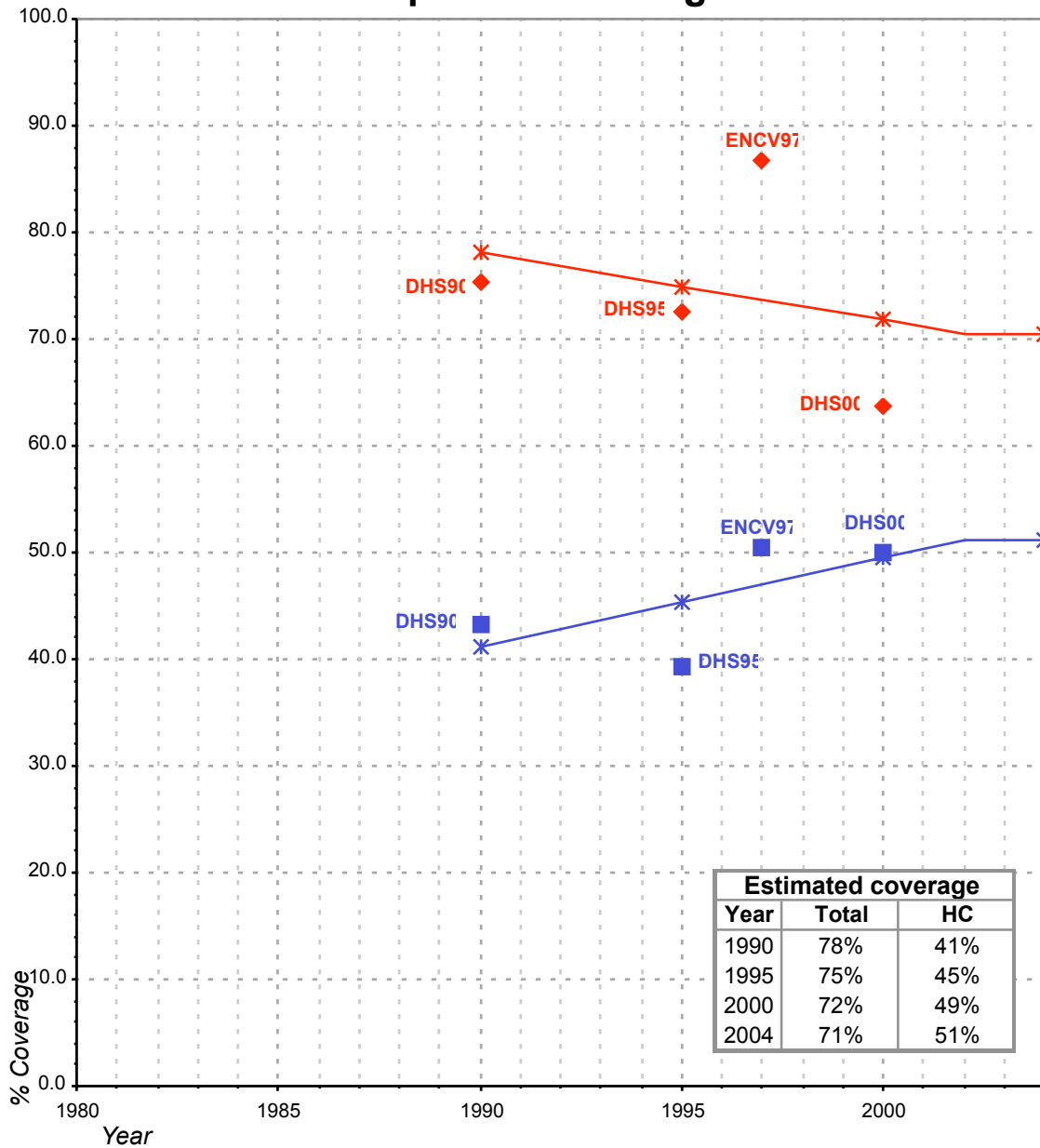
—*— Estimates

—*— Estimates

Total access :

Household connections :

Colombia - rural - Access to improved drinking water sources



Estimated coverage		
Year	Total	HC
1990	78%	41%
1995	75%	45%
2000	72%	49%
2004	71%	51%

Total improved access

Household connections (HC)

◆ Used for estimates

■ Used for estimates

—*— Estimates

—*— Estimates

Total access :

Household connections :