



**WHO / UNICEF**

**Joint Monitoring Programme  
for Water Supply and Sanitation**

**Coverage Estimates  
Improved Sanitation**

Updated in June 2006

---

**Colombia**

---

## Urban and Rural Sanitation - Colombia

### Survey

DHS 1990		
SANITATION	Urban	Rural
Inodoro-alcantarillado	89.3	16.9
Inodoro-pozo septico	5.0	33.3
Letrina	2.5	9.1
Otro	0.4	4.5
No tiene sanitario	2.8	36.2
<b>TOTAL</b>	<b>100</b>	<b>100</b>
50% of letrina considered improved	1.3	4.6
Access to improved sanitation	96%	55%
% House connections	89%	17%

Source: Encuesta de Prevalencia, Demografia y Salud, 1990

DHS 1995		
SANITATION	Urban	Rural
Inodoro (alcantarilla)	90.0	13.3
Inodoro (pozo septico)	4.8	22.6
Inodoro a otros	1.0	10.2
Letrina	1.5	10.7
No tiene sanitario	2.5	41.4
Otro/ no sabe	0.1	1.7
<b>TOTAL</b>	<b>100</b>	<b>100</b>
50% of letrina considered improved	0.8	5.4
Access to improved sanitation	96%	41%
% House connections	90%	13%

Source: Colombia Demographic & Health Survey 1995

RPAHO 1997		
ENCV		
SANITATION	Urban	Rural
Inodoro a alcantarillado	87.6	30.1
Inodoro a tanque septico	7.2	27.6
Inodoro sin connexion	1.6	10.2
Letrina o bajamar {low tide?}	1.8	9.0
No tiene	1.7	23.1
<b>TOTAL</b>	<b>100</b>	<b>100</b>
50% of letrina considered improved	0.9	4.5
Access to improved sanitation	96%	62%
% House connections	88%	30%

Source: Desigualdades en el acceso, uso y gasto con el agua potable en America Latina y el Caribe, Colombia, PAHO, Feb 2001, using data of ENCV 1997

DHS 2000		
SANITATION	Urban	Rural
Inodoro a alcantarillado	90.7	14.3
Inodoro a pozo septico	4.2	32.6
Inodoro a quebrada, campo abierto	1.3	11.3
Letrina (pozo negro, hoyo)	2.4	13
No tiene servicio sanitario	1.4	28.7
<b>TOTAL</b>	<b>100</b>	<b>100</b>
50% of letrina considered improved	1.2	6.5
Access to improved sanitation	96%	53%
% House connections	91%	14%

Source: Salud sexual y reproductiva en Colombia, Encuesta Nacional de Demografia y Salud, 2000

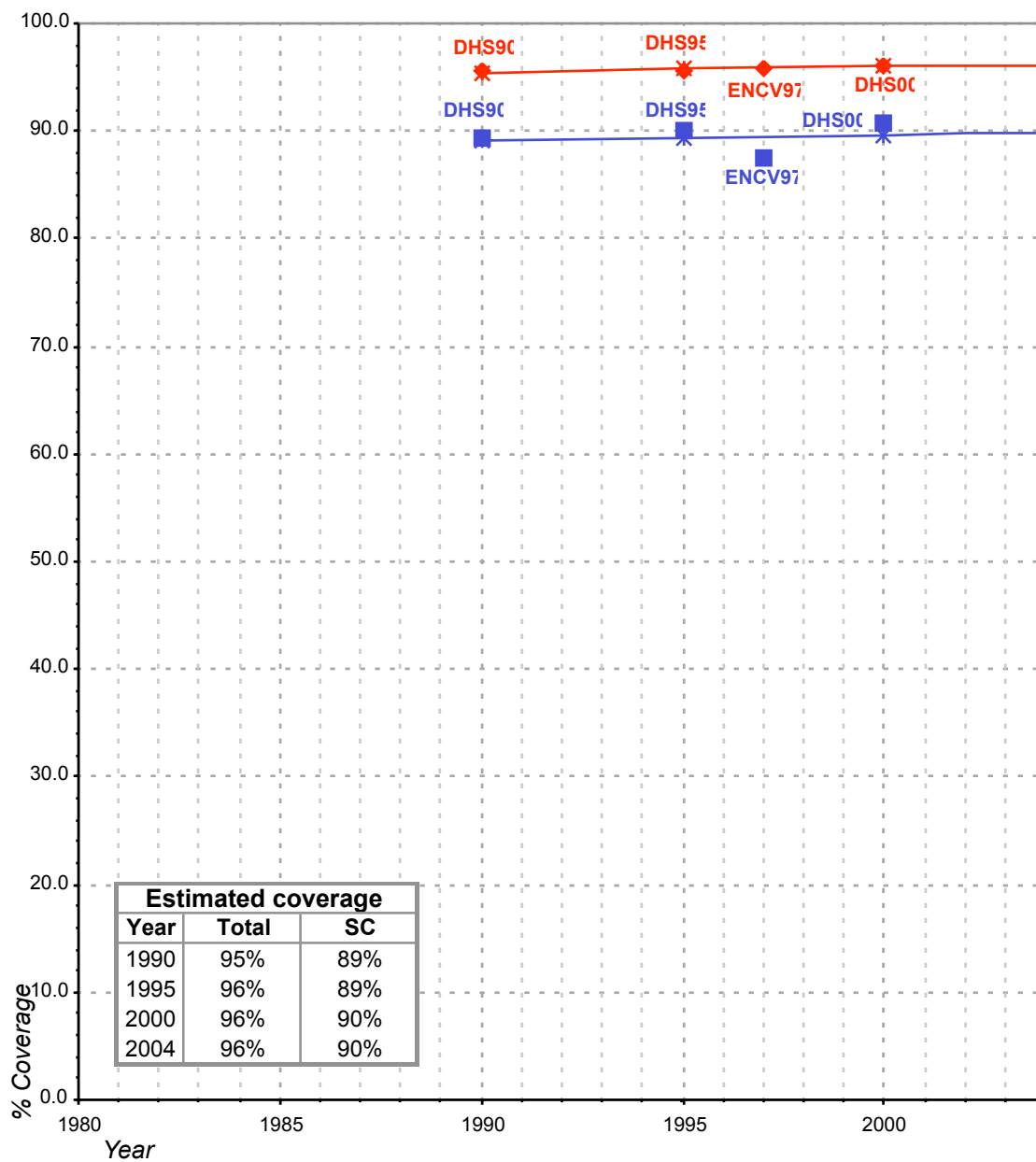
### Estimate

FORM6/WHO 1999		
(Population in thousands)		
SANITATION	Urban	Rural
Population served with household connections to conventional sewers	18'494	2'393
Population without household connections but served with adequate, private or shared on-site system		
<b>Total population served</b>	<b>18'494</b>	<b>2'393</b>
Total population unserved	9'568	9'560
<b>Total population</b>	<b>28'062</b>	<b>11'953</b>
Access to improved sanitation	66%	20%
% House connections	66%	20%

Source: Global Water Supply and Sanitation Assessment 2000. Water Supply and Sanitation Sector Questionnaire - 1999 (Form 6 -sent to WHO)

Colombia			SANITATION							
			URBAN				RURAL			
			HC		Total		HC		Total	
Source	Code	Year	Used for estimates	Not used for estimates	Used for estimates	Not used for estimates	Used for estimates	Not used for estimates	Used for estimates	Not used for estimates
The International Drinking Water Supply and Sanitation Decade. Review of National Baseline Data (as at December 1980). WHO 1984	WHO80	1980		61.0		100.0				4.0
The International Drinking Water Supply and Sanitation Decade. Review of National Progress (as at December 1983). WHO 1986.	WHO83	1983		62.0		96.0				13.0
The International Drinking Water Supply and Sanitation Decade. Review of Mid-Decade Progress (as at December 1985). WHO 1987.	WHO85	1985		55.0						12.0
The International Drinking Water Supply and Sanitation Decade. Review of National Progress (as at December 1988). WHO 1990.	WHO88	1988		54.0		85.0				18.0
The International Drinking Water Supply and Sanitation Decade. End of Decade Review (as at December 1990). WHO1992.	WHO90	1990		51.0		84.0				18.0
Encuesta de Prevalencia, Demografia y Salud, 1990	DHS90	1990	89.3		95.6		16.9		54.8	
Water Supply and Sanitation Sector Monitoring Report 1993 (Sector Status as of 31 December 1991)	JMP93	1991								
Water Supply and Sanitation Sector Monitoring Report - 1996. Sector Status as of 31 December 1994. WHO/UNICEF 1996.	JMP96	1993				76.0				33.0
Colombia Demographic & Health Survey, 1995.	DHS95	1995	90.0		95.6		13.3		41.3	
Desigualdades en el acceso, uso y gasto con el agua potable en America Latina y el Caribe, Colombia, PAHO, Feb 2001, using data of ENCV 1997	ENCV97	1997	87.6		95.8		30.1		62.2	
Global Water Supply and Sanitation Assessment 2000. Water Supply and Sanitation Sector Questionnaire - 1999. (Form 6 sent to WHO)	JMP99	1998		79.0		97.0		17.0		51.0
Salud sexual y reproductiva en Colombia, Encuesta Nacional de Demografia y Salud, 2000	DHS00	2000	90.7		96.1		14.3		53.5	

# Colombia - urban - Access to improved sanitation coverage



**Total improved access**

**Sewerage connections (SC)**

◆ Used for estimates

■ Used for estimates

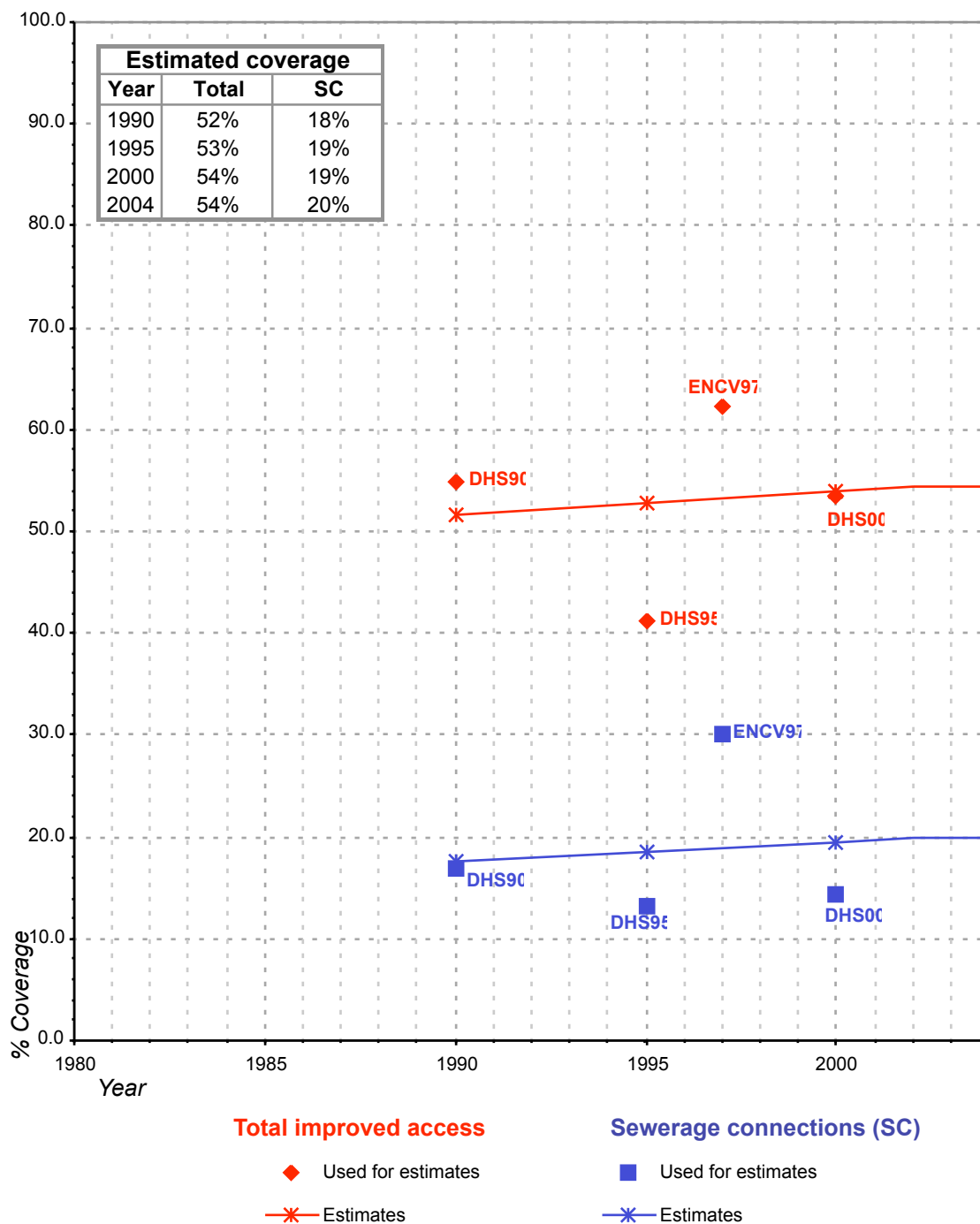
—\*— Estimates

—\*— Estimates

**Total access :**

**Sewerage connections :**

# Colombia - rural - Access to improved sanitation coverage



Total access :

Sewerage connections :