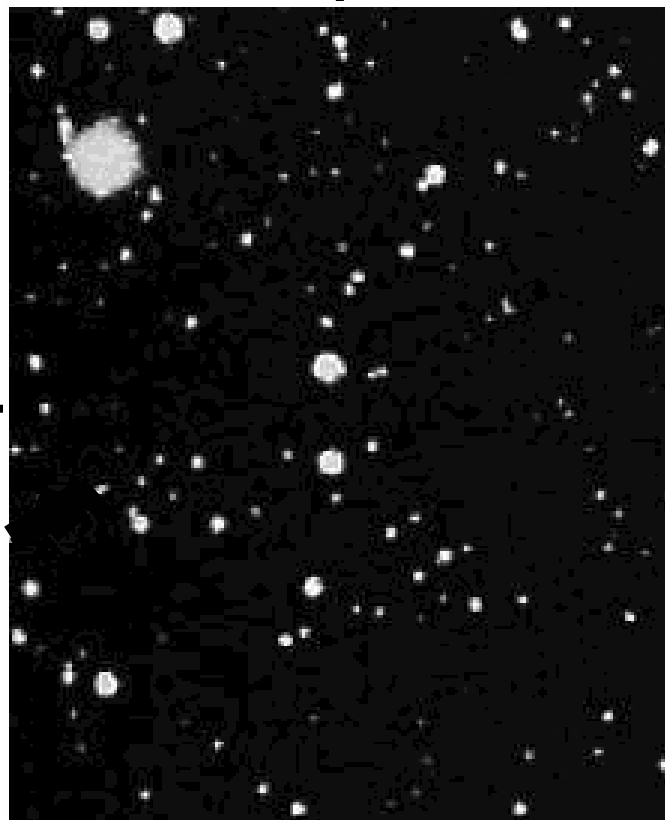


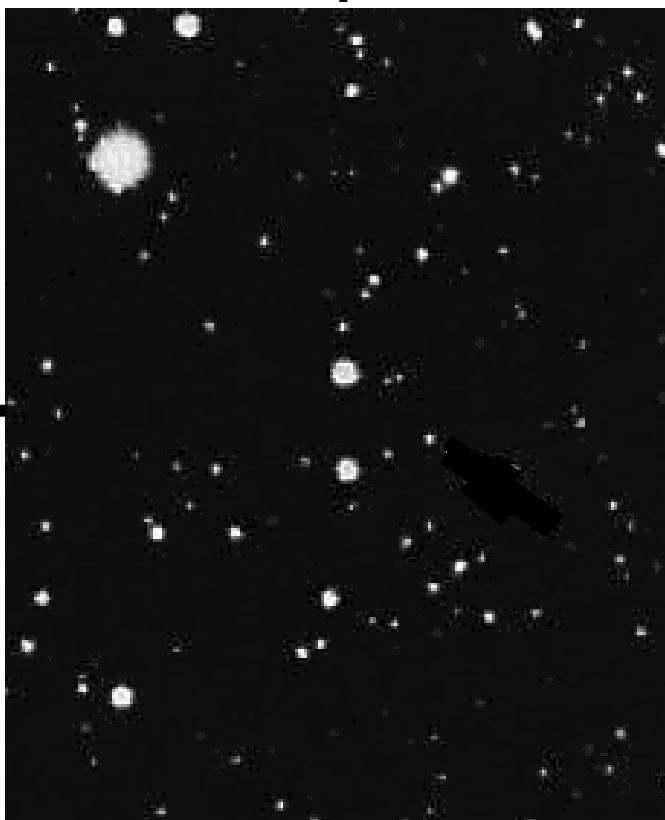
ACTIVITY IV: Find Pluto

Copies of the actual photographs used by Clyde Tombaugh with his blink comparator are shown below. Use your computer blink comparator to determine which faint point of light is not a star, but actually the tiny planet Pluto.

Pluto Discovery Photo Plate A



Pluto Discovery Photo Plate B



Once you have found the blinking point of light and discovered the planet Pluto, locate it with a circle in each of the photographs above.

To learn more about Clyde Tombaugh and the discovery of Pluto, visit the following Web site:

http://www.kshs.org/people/tombaugh_clyde.htm

