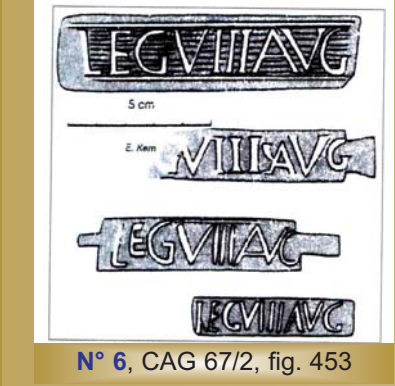
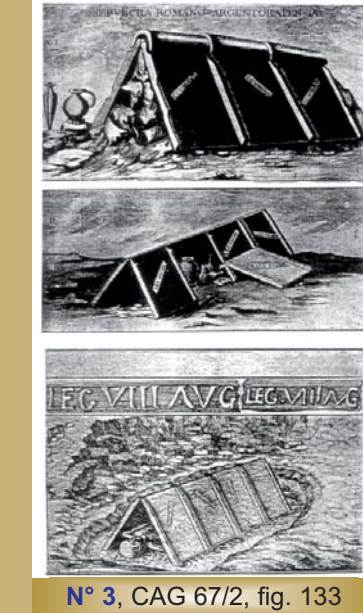


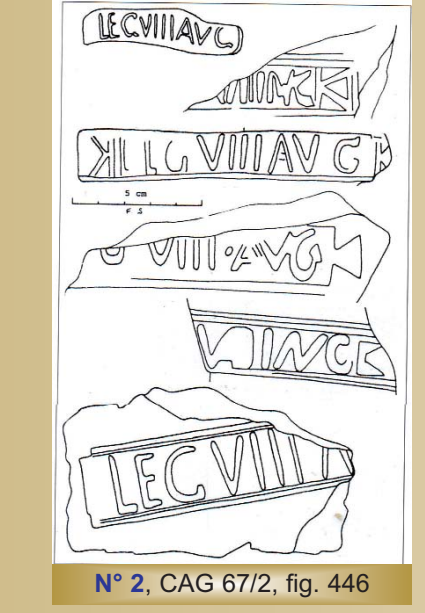
INVENTAIRE DES SITES ARCHEOLOGIQUES



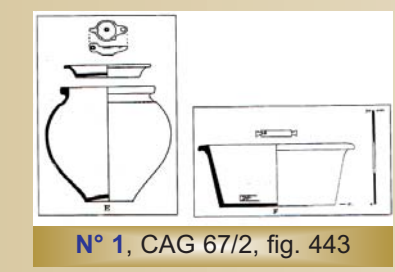
N° 6, CAG 67/2, fig. 453



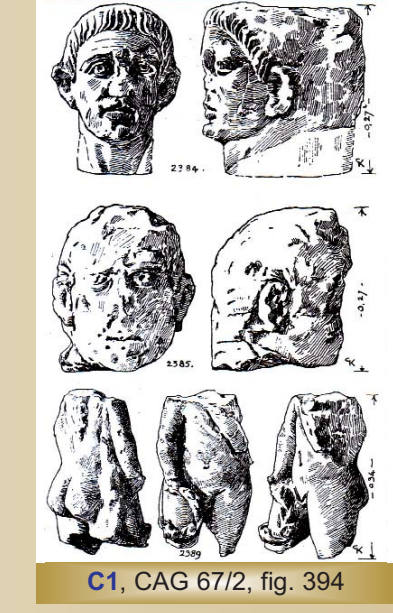
N° 3, CAG 67/2, fig. 133



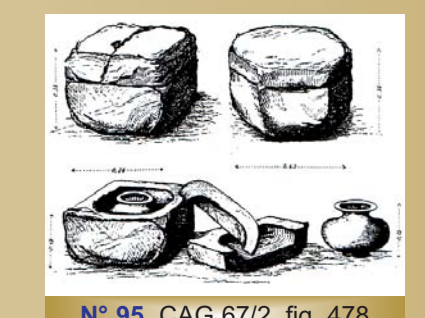
N° 2, CAG 67/2, fig. 446



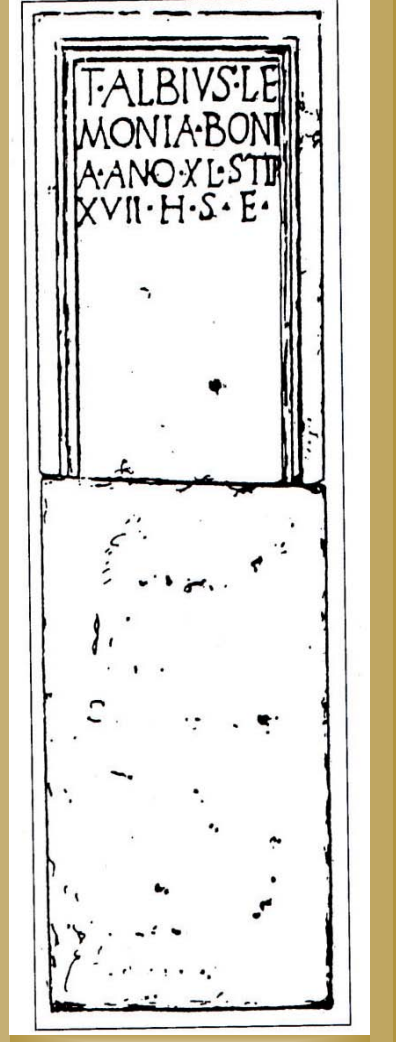
N° 1, CAG 67/2, fig. 443



C1, CAG 67/2, fig. 394



N° 95, CAG 67/2, fig. 478



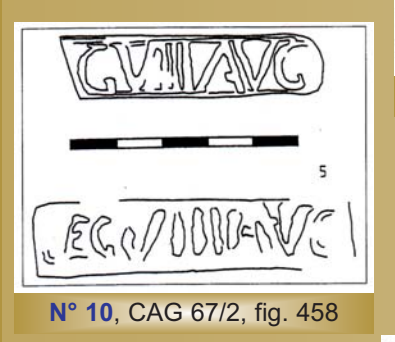
N° 91, CAG 67/2, fig. 475



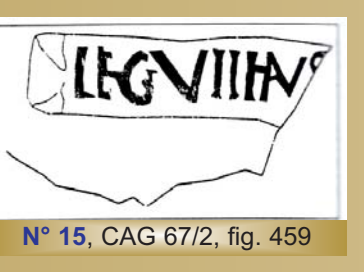
N° 8, CAG 67/2, fig. 426



N° 9, CAG 67/2, fig. 454



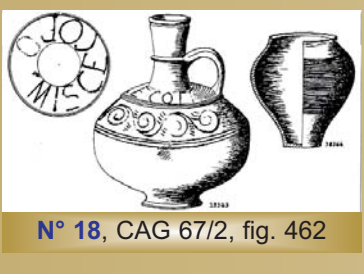
N° 10, CAG 67/2, fig. 458



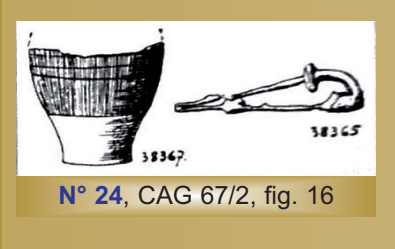
N° 15, CAG 67/2, fig. 459



N° 19, CAG 67/2, fig. 463



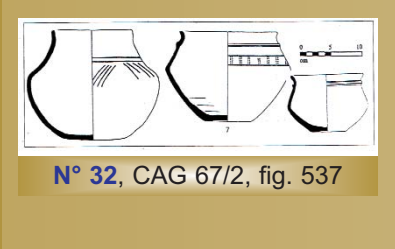
N° 18, CAG 67/2, fig. 462



N° 24, CAG 67/2, fig. 416



N° 34, CAG 67/2, fig. 435



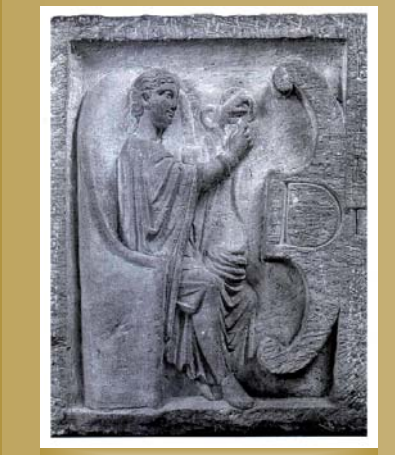
N° 32, CAG 67/2, fig. 437



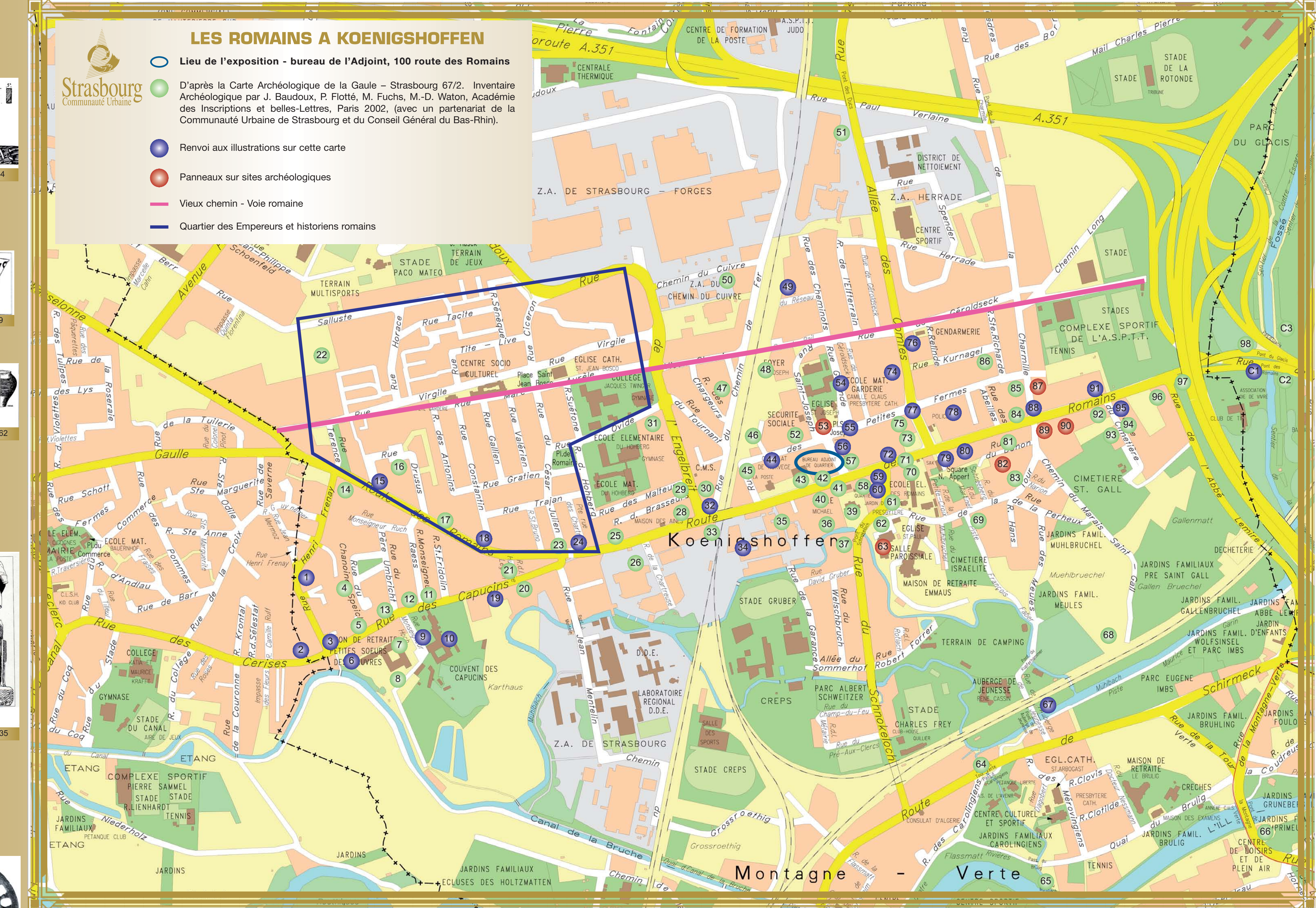
N° 44, CAG 67/2, fig. 439



N° 49, CAG 67/2, fig. 442



N° 53, CAG 67/2, fig. 205



LES ROMAINS A KOENIGSHOFFEN

- Lieu de l'exposition - bureau de l'Adjoint, 100 route des Romains
- D'après la Carte Archéologique de la Gaule - Strasbourg 67/2. Inventaire Archéologique par J. Baudoux, P. Flotté, M. Fuchs, M.-D. Waton, Académie des Inscriptions et belles-Lettres, Paris 2002, (avec un partenariat de la Communauté Urbaine de Strasbourg et du Conseil Général du Bas-Rhin).
- Renvoi aux illustrations sur cette carte
- Panneaux sur sites archéologiques
- Vieux chemin - Voie romaine
- Quartier des Empereurs et historiens romains



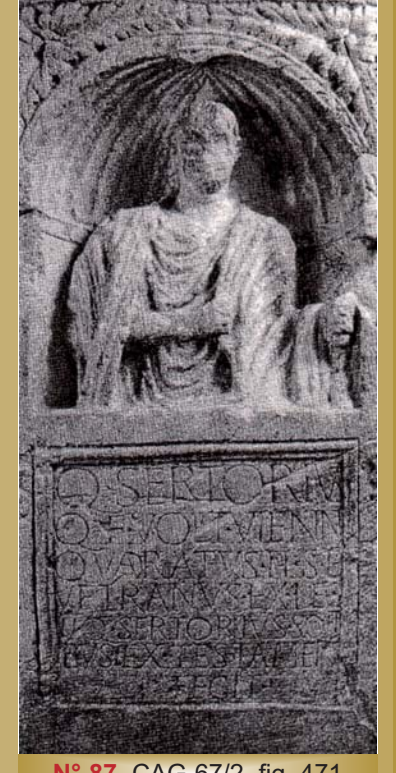
N° 90, CAG 67/2, fig. 475



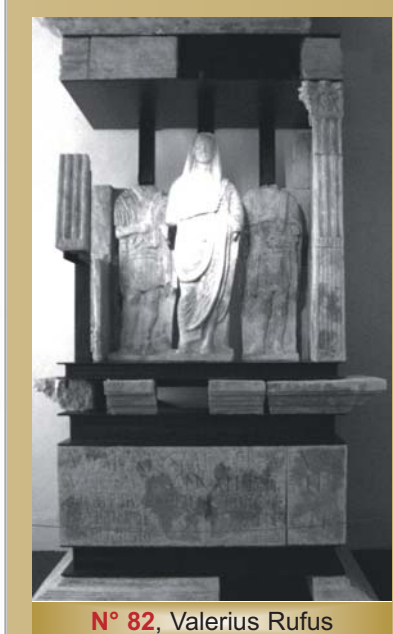
N° 88, CAG 67/2, fig. 474



N° 89, CAG 67/2, fig. 474



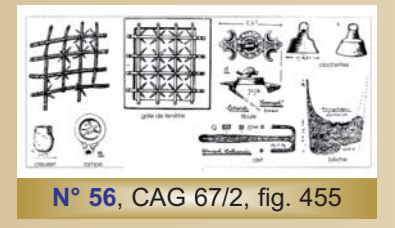
N° 87, CAG 67/2, fig. 471



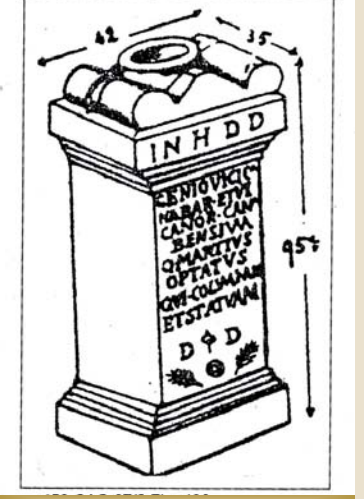
N° 82, Valerius Rufus



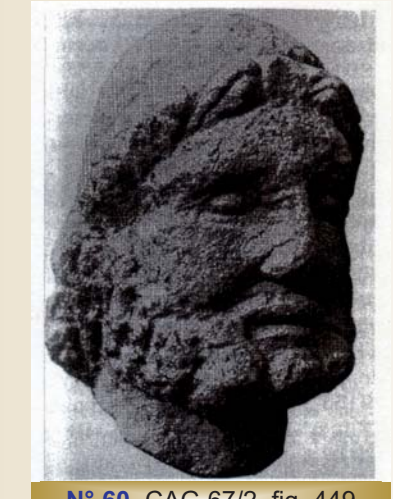
N° 80, CAG 67/2, fig. 463



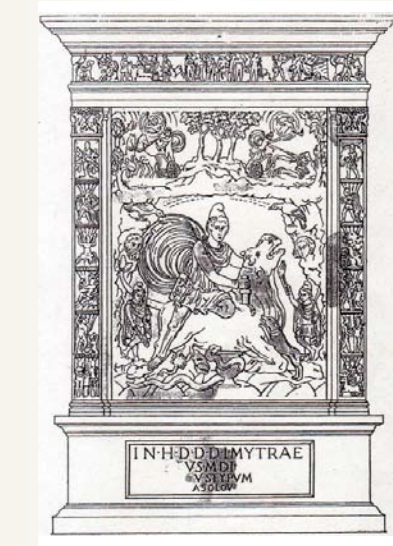
N° 56, CAG 67/2, fig. 455



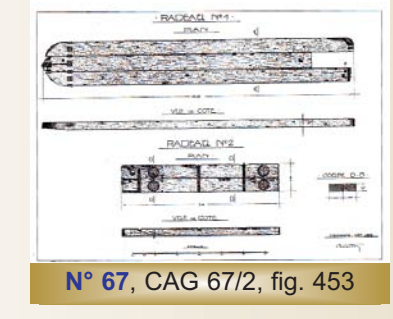
N° 59, CAG 67/2, fig. 446



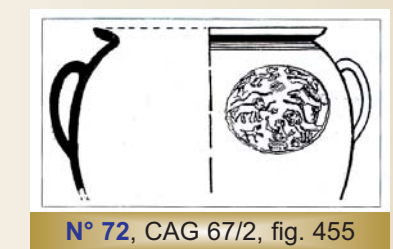
N° 60, CAG 67/2, fig. 449



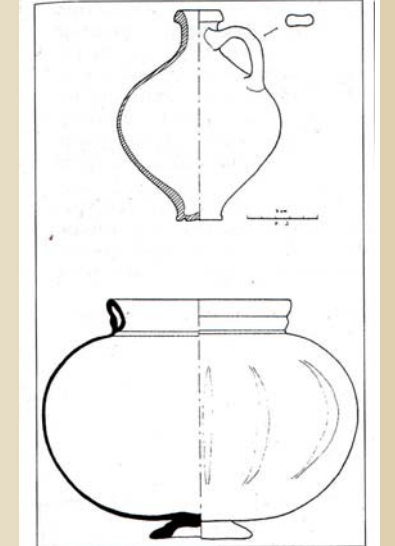
N° 63, CAG 67/2, fig. 449



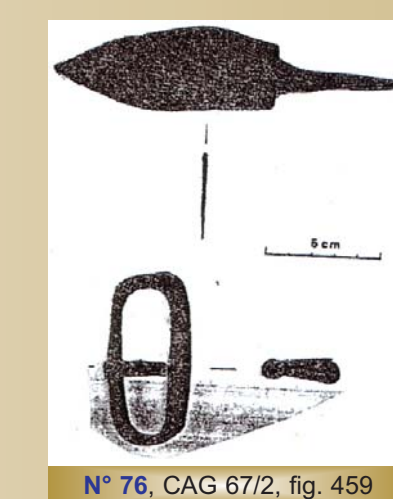
N° 67, CAG 67/2, fig. 453



N° 72, CAG 67/2, fig. 455



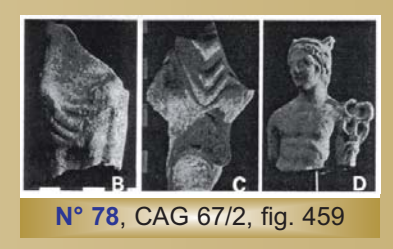
N° 74, CAG 67/2, fig. 457



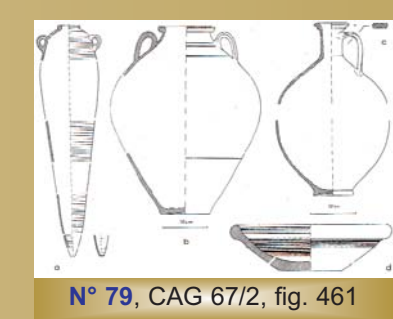
N° 76, CAG 67/2, fig. 459



N° 77, CAG 67/2, fig. 459



N° 78, CAG 67/2, fig. 459



N° 79, CAG 67/2, fig. 461