

Government Structure

Support Services

County Executive

L. Brooks Patterson (248) 858-1000

Community & Econ. Development Dir

Doug Smith (248) 858-1278

Planning & Econ. Development Mgr

Daniel Hunter (248) 858-0720

2006 Tax Rates

School District	Homestead	Non Homestead
Oakland County	\$34.03	\$49.61

Source: www.oakgov.com/equal; rates per \$1000 State Equalized Value and published in December of each tax year

Private Schools / Colleges

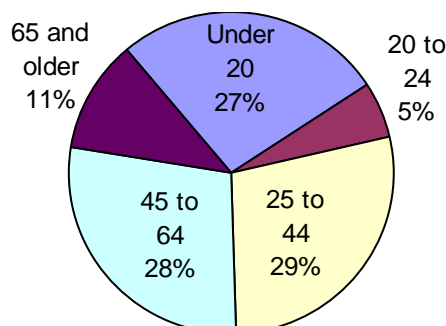
Private Schools

Over 80 private schools servicing the county

Colleges and Universities

Oakland University, 13 Colleges, 3 Satellite Campuses - Wayne State University, Michigan State University, Central Michigan University

Population by Age



Source: ACS 2005

OAKLAND COUNTY PLANNING AND ECONOMIC DEVELOPMENT

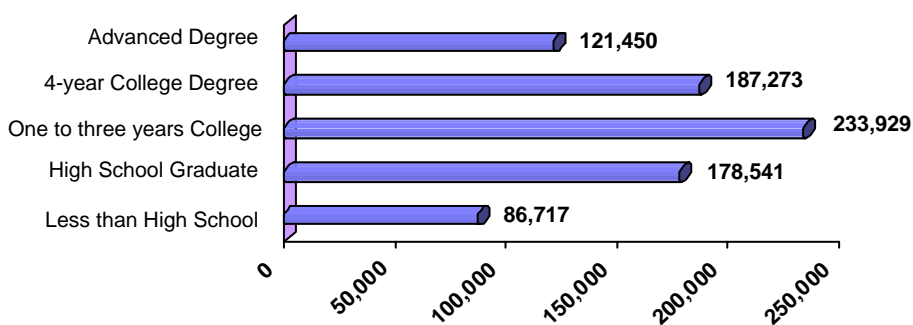
Oakland County, home to a mix of urban and rural communities, with its 30 downtown areas and many scenic natural settings, provides a high quality of life for any lifestyle. Countless outdoor recreation opportunities are available including: 3 ski areas, 27 public fishing sites, over 60 public golf courses, more than 1468 lakes and approximately 89,000 acres of public recreation land. Significant entertainment and sports venues include DTE and Meadowbrook outdoor theaters, the Palace of Auburn Hills -- home to the Detroit Pistons, Cranbrook Institutions and the Detroit Zoological Park. Oakland County also ranks as the fourth wealthiest county in the nation among counties with populations of more than one million people. Like all of Michigan, the County enjoys the variety of four distinct seasons with an average temperature of 51 degrees Fahrenheit, a high of 77 degrees in July and a low of 23 in January.

Public School Enrollment

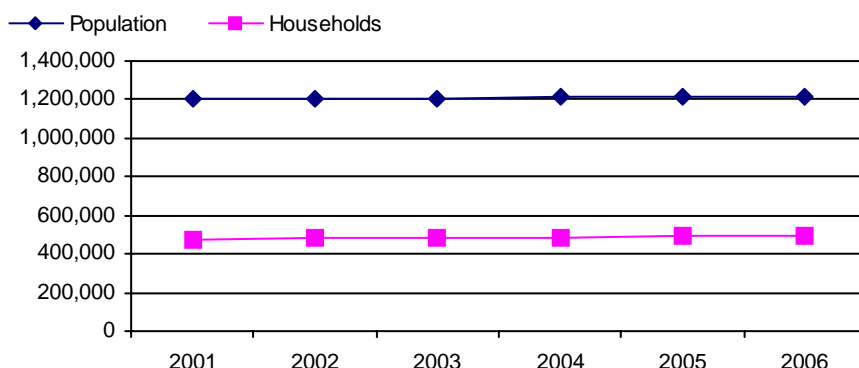
Does not include public school academies

Community	School District	Year	Enrollment
Oakland County	Oakland County	2006	193371

Educational Attainment of People Over 25 Years of Age



Population and Household Growth



Source: SEMCOG



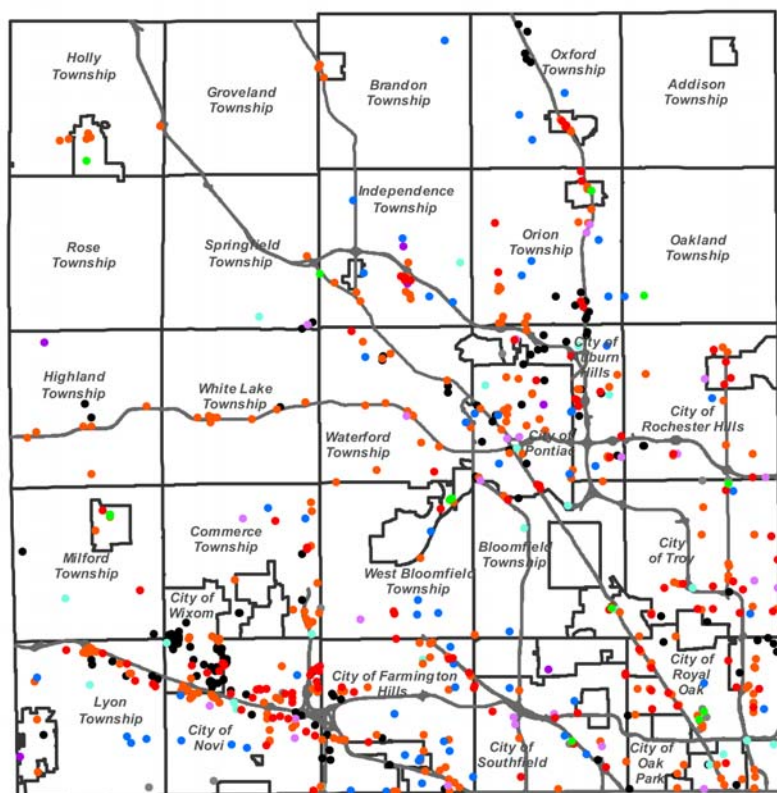
WHERE PEOPLE & TECHNOLOGY PROSPER

Oakland County
Michigan

Planning & Economic Development Services

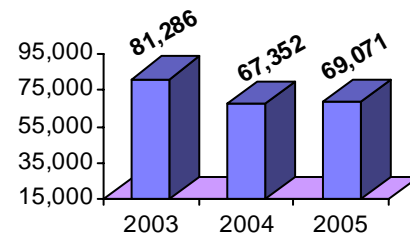
Local New Development Activity

Quality of Life



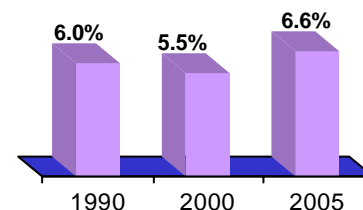
- Mixed-Use
- Office Bldg.
- Trans./Utility
- Medical Facility
- Institutional Facility
- Retail/Commercial Bldg.
- Residential/Commercial
- Leisure Activity/Accommodations
- Industrial/Warehouse/Hi-Tech

Median Household Income

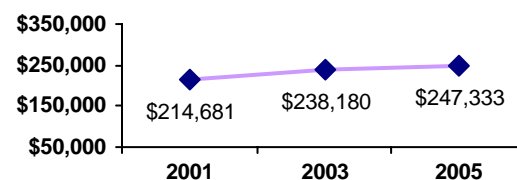


Source: Claritas

Poverty as a percent of Total Population



Average Housing Costs



Values based on number of homes sold
Source: O.C. Equalization

Top Employers

Rank	CompanyName	Industry
1	General Motors Corporation	Automotive manufacturer
2	William Beaumont Hospital	Private nonprofit hospital
3	Chrysler Group	Automotive manufacturer
4	Oakland County Government	Government services
5	EDS Corporation	Information technology
6	St. John Health	Health care organization
7	AT&T Michigan	Telecommunications
8	U.S. Postal Service	Postal service
9	Blue Cross Blue Shield of Michigan	Health care insurer
10	Trinity Health	Health care system

Manufactured Housing

Year	# of Parks	# of Units
2000	64	18663
2003	65	18893
2005	65	18897

Source: SEMCOG

For more information contact:
Daniel P. Hunter, Manager
Oakland County Planning and Economic
Development Services
1200 North Telegraph Road, Dept. 412
Pontiac, Michigan 48341
www.oakgov.com
ph: 248 858 0720 fax: 248 975 9555