




The ideal starting point for exploring Chester featuring:

- The Rows Café
- DVD Shows
- Tourist Information Centre 
- Roman Amphitheatre Exhibition
- Changing of Roman Guard Parade starting point (Various Sundays, May–October)
- Guided Walks – see separate panel in this leaflet
- Busybus adventure tours exploring Cheshire and North Wales with fun and laughter en route
- National Express main ticket office
- Gift Shop
- Fully accessible toilets
- Baby change/feeding facilities

For further information contact:

Chester Visitor Centre, Vicars Lane, Chester CH1 1QX.

Tel. 01244 351609 Email. tis@chester.gov.uk

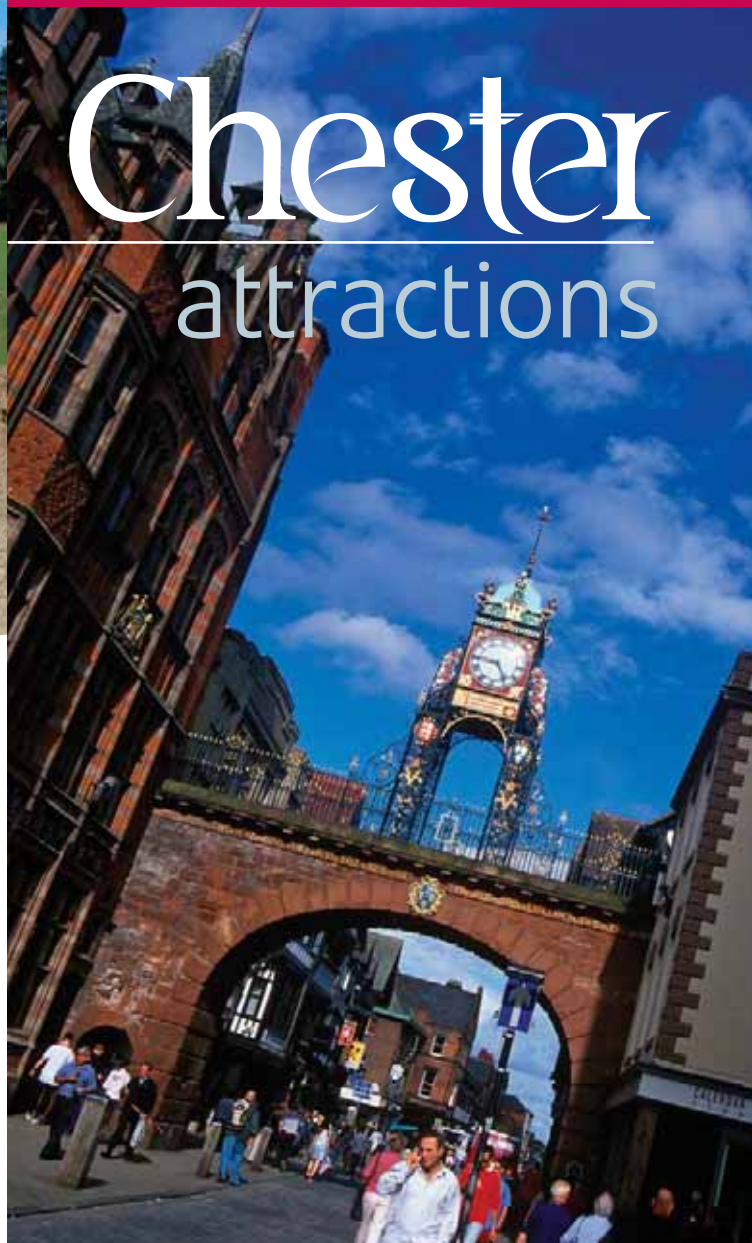
www.chestertourism.com

Designed by www.kmcreative.co.uk • 01244 320677

WIN A WEEKEND BREAK

Chester

attractions



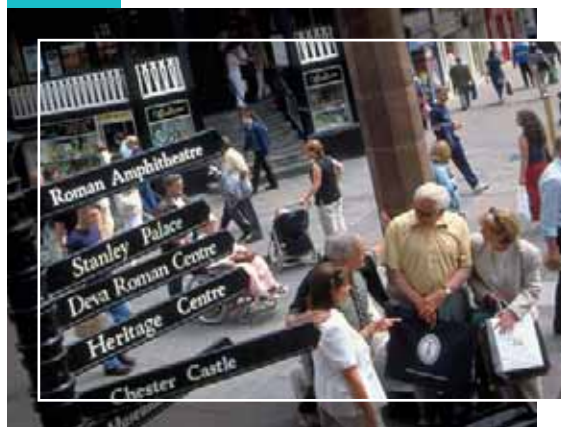
Chester has been welcoming visitors since the Romans came here 2,000 years ago and it's easy to see why it's so popular today!

Here you can enjoy great treasures from the past including the unique world-famous Row galleries and the most complete City Walls in Britain!

Chester has many other claims to fame including the Eastgate Clock – probably the most photographed in the world after Big Ben – and the largest stone-built Roman Amphitheatre in the country.

Chester is one of the most compact and walkable cities in Britain. Join one of the many guided walking tours that leave the Chester Visitor Centre (CVC) or Town Hall Tourist Information Centre (TIC) daily or follow the waymarked Millennium Festival Trail that links the City's best-loved historic buildings. Trail guides are on sale at the CVC or TIC.

In summertime head for the city centre Cross where the Town Crier welcomes visitors from across the world at 12 noon, Tuesday to Saturday, May to August. It's a tradition dating back over 500 years.



Chester entertains with a fiesta of festivals all year including Summer Music, Literature, Folk, Food and Drink and Fashion as well as a host of street processions including the Midsummer & Midwinter Watch (spectacular recreations of a medieval entertainment), the Lord Mayor's Show and Christmas Lantern Parades. Pick up your free 'Welcome to Chester' guide available at the CVC or TIC for details.

The City also hosts Chester Races (the oldest in Britain) and Chester Regatta – the oldest rowing competition in the world. And if that seems too much like hard work, relax on a river trip or enjoy a leisurely canal cruise.

The City is the most complete shopping centre in Britain thanks to the Rows, two-tier medieval galleries of shops. Here you'll find well-known high street names and a host of specialist shops. The City is also a Mecca for antique lovers and collectors. The Three Old Arches is said to be the oldest shop front in England. The Mall Grosvenor and Forum Shopping Centre with indoor market provide great undercover shopping all year.



Shopping will give you a great appetite for the City's magical menu of mouthwatering restaurants and a host of cosy teashops, chic café bars and traditional half-timbered inns. Here you can savour delicious dishes from across the world including Tex-Mex, South American, Thai and Caribbean as well as French, Italian, Spanish and Swedish. Simply scrumptious! You can pick up a free Chester Food and Drink guide from Chester Visitor Centre.

Chester is also the ideal base to stay and explore the castles, coast and countryside of North Wales; the canals, country houses and gardens of Cheshire including Chester Zoo, the largest garden zoo in Britain, and Lyme Park (the location for BBC TV's *Pride and Prejudice*); and the Wirral Peninsula, home to the magnificent Lady Lever Art Gallery, a treasure-house of great paintings, furniture and ceramics.

Just outside Chester is McArthur Glen Designer Outlet, Cheshire Oaks the largest in Europe. Nearby is the Blue Planet, Britain's biggest aquarium, and a gigantic Iwerks 3-D Cinema – the first in Britain.

Chester is not just a magnificent heritage city, it's also the gateway to some of the finest countryside in England dotted with picturesque villages like Malpas, Tattenhall and Farndon.

There's so much to see and do in Chester and the surrounding area that you may want to stay longer and explore more. Chester offers a great choice of accommodation ranging from de-luxe hotels and warm and friendly B&Bs to superb self-catering and budget hostels.

You can book accommodation at Chester Visitor Centre or Town Hall Tourist Information Centre or click on our website at www.visitchester.com where the latest vacancy information is displayed. You can book on-line or use our Easybook© room reservation service by telephoning: 01244 402506.

**Enjoy your visit
and come back again soon!**

For further information contact:

Chester Visitor Centre, Vicars Lane, Chester CH1 1QX.
Tel. 01244 351609

Email. tis@chester.gov.uk

www.chestertourism.com



Café Bar by day, sophisticated music venue by night

Situated in a picturesque courtyard, we are open all day serving food, cask ales, fine wines, teas & coffees in a mellow ambience with newspapers available. Al fresco dining outside in the courtyard or large garden.

Chill out to Sunday afternoon jazz.

In the evening the doors open for concerts of Blues & Rock, dancing to Soul & Funk, appreciate the jazz nights or participate in the acoustic open mic night. Saturdays bring Alexander's famous comedy cabaret followed by a disco.



Ring for one of our diaries to check out the current acts on offer. Tickets for the major events can be bought in advance. Our renowned 'Jazz Banquet' can be booked in advance to ensure your reserved table.

Now open, Alexander's sister establishment, Juice, with freshly squeezed juices & smoothies, organic beers, fairtrade wines & the best coffee in Chester. Internet access.

OPENING TIMES 11am - 2am Mon - Sat, 12.00 - 12.30am Sun

alexandersjazz
THEATRE BAR & RESTAURANT

Alexanders Jazz, Rufus Court,
Northgate Street, Chester CH1 2JW
Tel. 01244 340005 Email. info@alexandersjazz.com
www.alexandersjazz.com



Visit the Soldiers of Cheshire, past and present, on display after a £1½ million refurbishment

- An exciting place for all the family
- Hands-on exhibits
- Exhibitions and events throughout the year

Adults £3.00 - Concessions £2.00



OPENING TIMES daily 10am - 5pm (last entry 4.30pm).
Closed 22nd December - 2nd January.
Schools welcome.

Cheshire Military Museum,
The Castle, Chester CH1 2DN
Tel. 01244 327617
www.chester.ac.uk/militarymuseum





No visit to Chester is complete without a cruise on the River Dee

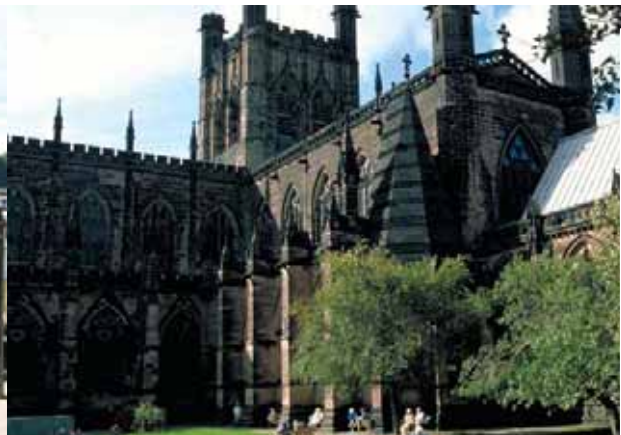
The very best way to appreciate the beauty and character of this ancient city.

- Half hour cruises leave The Groves between 11am and 5pm
- A particularly attractive 2 hour cruise for the more discerning to the Iron Bridge through Eaton Estate, home of the Duke and Duchess of Westminster. Weekends only May. Daily June, July, August and September. 2 hour cruise leaves at 12 noon and 2.30pm.
- Showboats available for private charter, daytime and evenings for that special occasion with a nautical theme throughout the year. Themed BBQ evening cruises on Sunday throughout the season.
- The Lady Diana and Mark Twain showboats are fully enclosed and offer hot and cold beverages on day and evening cruises.
- Save money and buy a combined open top bus tour and boat ticket onboard the boat.

OPENING TIMES Cruises of half hour duration, every 30 minutes during the season.
Open daily April – October.
Weekends only November – March.



Chesterboat, Souters Lane, The Groves, Chester CH1 1SD
Tel. 01244 325394 Email. chesterboats@aol.com
www.chesterboat.co.uk



Saxon Minster - Benedictine Abbey - Magnificent Cathedral

There has been a church on this site for over 1,000 years. Originally a Saxon Minster, then rebuilt as a Benedictine Abbey, this magnificent building has been the Cathedral of the Diocese of Chester since 1541.

- The Cloisters and Church form one of the most complete medieval monastic complexes in the country
- Digital audio guidePORT tour
- Intricately carved Quire stalls are the finest in the UK, almost 800 years old
- Medieval shrine of St. Werburgh
- Modern works of art and stained glass
- Licensed Refectory Restaurant
- Cathedral Shop for gifts and souvenirs
- Disabled access and facilities including toilets and induction loop.

An admission charge is payable

OPENING TIMES

Monday - Saturday 09.00 - 17.00
Sunday 13.00 - 17.00



Chester Cathedral

Chester Cathedral Office, 12 Abbey Square, Chester CH1 2HU
Tel. 01244 324756 Fax. 01244 341110
www.chestercathedral.com



Much more than you bargained for

Chester Market provides undercover shopping in the heart of the city, following a tradition dating back to the 14th century.

With over 70 shops, you're sure to find just about everything you need, from lingerie to liquorice, shoes to sink plungers, tomatoes to tarot cards.

Not only will you receive outstanding customer service from our friendly traders, you'll be able to tap into a wealth of local knowledge and product expertise that you won't find anywhere else.

So why not come and visit us at Chester Indoor Markets? You'll get much more than you bargained for.



OPENING TIMES Chester Indoor Market
Open Monday to Saturday 8am – 5.30pm



Access from Princess Street Chester,
also via The Forum Shopping Centre
Tel. 01244 402340 www.visitchester.com/markets



The only way to see Chester

Join us and experience Chester aboard this "Must Do" city sightseeing tour. Travel back in time on one of the Worlds only double-decker vintage omnibus's of its type with our fully costumed tour guides – guaranteed to give you a day to remember!

- Operates daily (except Fridays)
- Great value
- From Chester Visitor Centre, opposite Amphitheatre
- Tours of 30-minute durations, every half-hour
- See Chester's main sights and attractions
- Fully narrated by live, costumed guide
- Fun for all the family (family tickets available)
- Available for private hire, weddings, functions & film/tv work
- Group discounts available

OPENING TIMES

March - October:
Daily, 10:00am - 5:00pm
November - March:
Weekends, 10:30am - 4:00pm
See board at Visitor Centre for additional information
Subject to weather & operational conditions



Tel. 0870 765 6840 www.chesterheritagetours.co.uk

where to find us



Across the Chester District you can explore many other places of interest including:

- Beeston Castle perched on a lofty crag towering above the Cheshire Plain
- the 17th century water-powered Stretton Mill at Farndon, that has been grinding corn for over 350 years
- the real taste of Chester at Tattenhall's scrumptious Cheshire Ice-Cream Dairy
- the Golden Age of Motoring at the Mouldsworth Motor Museum

Just call into Chester Visitor Centre for information...
Have fun!

- | | |
|----------------------------|-------------------------------------|
| 1 Alexanders | 9 Grosvenor Museum |
| 2 Cheshire Military Museum | 10 Grosvenor Park Miniature Railway |
| 3 Chesterboat | 11 Guided Walks |
| 4 Chester Cathedral | 12 The Mall |
| 5 Chester Market | 13 The Mill Hotel Canal Cruise |
| 6 Chester Heritage Tour ● | 14 Chester Quasar |
| 7 City Sightseeing Tour ● | 15 Rufus Court |
| 8 Dewa Roman Experience | |



Fully guided open-top sightseeing tours

One of the best ways to appreciate Chester's 2,000 years of history is to take one of our fully guided open-top sightseeing tours. Tours last 55 minutes but your ticket is valid for 24hrs so you may get on and off the tour as you please.

Frequent departures every day between March and November from various stops around the city including the station, The Groves for the River Dee, Town Hall, Chester Visitor Centre and Lower Bridge Street. Buy your ticket on the bus; from Town Hall Tourist Information Centre; Chester Visitor Centre or ChesterBoat.

Why not combine a ChesterBoat River Cruise with an open-top bus tour. Great savings with a combined ticket.

SPECIAL DEAL Keep your ticket for discounts in Chester and money off over 70 CitySightseeing Tours worldwide.

OPENING TIMES Daily April to October, Weekends March & November. Regular departures up to every 12 minutes in main summer season. Full details at each stop (see map).



Tel. 01244 347457 or 07786 657225
Email. info@city-sightseeing.com
www.city-sightseeing.com



Experience the sights, sounds and smells of Roman Chester

Deva is the Roman fortress built almost 2,000 years ago which now lies buried beneath the hustle and bustle of modern day Chester. Now you too can visit the Roman fortress of Deva - pronounced 'Dewa' in Roman times. Here you stroll along a reconstructed street, experiencing some of the sights, sounds and smells of life inside the Roman fortress.

Next, you return to the present day on an extensive archaeological 'dig'. This is a unique opportunity to discover the substantial Roman, Saxon and Medieval remains beneath Chester. A superb collection of artefacts from Chester and elsewhere in the Roman Empire are on display in the on-site museum.

Touch the past yourself in our 'hands-on' studio. This area has activities for everyone, which range from trying on a replica suit of Roman armour, to handling Roman pottery and animal bones.

OPENING TIMES 9am-5pm Mon-Sat,
10am-5pm Sunday. Winter times may vary

Dewa Roman Experience, Pierpoint Lane,
off Bridge Street, Chester
Tel. 01244 343407





Making Chester Come to Life!

- Fascinating displays that build up a picture of Roman Chester - watch out for the Roman Soldiers along the way!
- Go back in time to home life from the 17th century to the 1930s.
- Explore 'hands-on' the geology and natural history of the area.
- Enjoy the beauty of art, and discover the city's important place in silver history.

With an active programme of special exhibitions and events there's something for everyone at the Grosvenor Museum!



- Facilities include the Conservatory Shop and tea and coffee in the Kings Arms Kitchen.
- There is independent access to the ground floor galleries, stairs to first floor.

SPECIAL DEAL Admission is Free
10% discount in Museum Shop with this leaflet

OPENING TIMES Monday - Saturday 10.30 am - 5 pm.
Sunday 1 - 4 pm. Closed Christmas,
New Year's Day, Good Friday.

The Grosvenor Museum,
27 Grosvenor Street, Chester CH1 2DD
Tel. 01244 402008
www.grosvenormuseum.co.uk



Fun for all the family!

Children just love to ride on the miniature railway set in the beautiful surroundings of Chester's Grosvenor Park. Complete with the long wooden bridge, and pond with ducks, moorhens and a noisy white goose.

- One of Chester's premier attractions for children.
- Souvenir shop for all of your Thomas the Tank goodies.
- No age limit. 9 days to 90 years old.
- Steam trains most summer Sundays (from July 2004).
- Glorious park setting ideal for picnics.
- Rides from 50p children, £1 adults.
- Multi ride and family tickets available.
- Play area for children.
- Children's party bookings available.



SPECIAL DEAL A free car sticker on production
of this leaflet

OPENING TIMES 10.30am-5.00pm Sat, Sun & School
Holidays April - October. Sundays 11.00am-4.00pm Winter
(weather permitting)

Tel. 07813 709674 www.gpmr.co.uk



A great way to discover Chester's 2000 years of treasures

History Hunter

Step back in time across 2,000 years of action-packed history and discover a world, where....

- The 20th Roman Legion built Fortress Deva to repel Welsh tribes
- Alfred the Great's daughter ruled an Anglo-Saxon kingdom and fought Viking raiders
- William the Conqueror's armies built a Norman strong-hold
- Cromwell's troops clashed with Royalist forces

Daily, all year 10.15 from Chester Visitor Centre, 10.30 from Town Hall Tourist Information Centre



Ghosthunter

Re-opening Chester's very own X-files exploring phantom phenomena, spine-chilling happenings and macabre, sinister and supernatural events. 19.30 from Town Hall Tourist Information Centre, Thurs, Fri, Sat, June-Oct (except Halloween). Sat only, Nov-May. (Tickets also from The Shropshire Arms pub on night)

Roman Legionary Patrol

Come and share the adventures of a front-line defender of the Roman Empire on a route-march around the Fortress Deva 2000 years ago, battling the elements and fierce Welsh tribes across the border.

Thurs - Sat, June - August 13.45 from Chester Visitor Centre, 14.00 from Town Hall Tourist Information Centre.

Admission charge for all tours.

Tel. 01244 351609 Fax. 01244 403188
Email. tis@chester.gov.uk



Shopping as it should be...

The Mall Grosvenor is situated in the heart of historic Chester, with entrances on Eastgate Street, Bridge Street and Pepper Street. With over 70 stores we offer an exciting mixture, from major high street names like River Island, H&M, Laura Ashley and The Pier to smaller, specialist retailers, top quality jewellers and excellent boutiques.

The Mall is open 7 days a week, to ensure we provide convenience and choice for all of our customers.



OPENING TIMES Mon - Sat 9am - 5.30pm
Sun 11am - 5pm

The Mall Grosvenor, Eastgate Street, Chester
Tel. 01244 353065
www.themall.co.uk/grosvenor





A touch of Paris and Amsterdam alive in Chester

Canal Cruise Adventure. Going through and up Locks, and returning down Locks. With a four-course meal.

The Mill brings a touch of Paris and Amsterdam to Chester. New at the Mill, specially built broad-beam restaurant boat. Lunch, dinner and weekend brunch. Imagine dining in a Restaurant.

Watching the world go by.
Reaching the parts of Chester other transport cannot reach.

A unique concept of serving food. All the food served direct from the hotel's kitchen. The starter course is served. You sail away then return for the main course.

Fully Licensed Bar. Draught beers and lager. Seating up to 60, 40 with dancing. Ideal for a romantic meal. Private parties. Anniversaries. Corporate entertaining.

Lunches from £15. Evenings from £20.95.



Reservations, Mill Hotel, Milton Street, Chester CH1 3NF
Tel. 01244 350035 Fax. 01244 345635
www.millhotel.com



Put yourself in the game!

- All action adrenaline pumping fun with a laser gun.
- From age 6 upwards anyone can enjoy our unique arena.
- Its a fast paced and exciting experience packed with twists and turns.
- After playing check your scores with your own personal score cards.
- Chester Quasar is the ultimate laser tag adventure!

SPECIAL DEAL
3-4-2 games on
production of this
leaflet

OPENING TIMES
Mon - Sun 10am - 10pm



Chester Quasar, 4 Volunteer Street
(behind Habitat and Pepper St. NCP), Chester.
Tel. 01244 400500 www.laneleisure.co.uk





Shopping for crafts & collectables – restaurants, bars and entertainment

Rufus Court won a Civic Award for its setting in the heart of the city. It was designed to provide a unique environment to retail unique objects. But it's hidden treasure, you'll need to explore a little bit to find it.

It's worth it! The old buildings on the City Walls dating back to 1730 are cleverly integrated with a new courtyard and the row level is in keeping with Chester's historic building style. Here you'll find individual, independent shops including jewellery, sports, hairdressing & beauty, galleries & bookshops. A delicatessen, five eateries (restaurants, bars & tea shop) complete the agenda. Internet access available.

Find us on the Civic Trust Millennium Trail.



OPENING TIMES Daily

Rufus Court & City Walls, off Northgate St
Tel. 01244 313400 Email. info@thompsoncoxon.co.uk
www.rufuscourt.co.uk

WIN a fabulous weekend in Chester

- 2 nights stay in one of Chester's fine Hotels or B&Bs for 2 people or family of up to 4 (sharing).
- FREE Chester Attractions Pass for attractions in this leaflet.
- £50.00 Shopping Vouchers for The Mall Grosvenor

To enter the draw please complete the questions below fully and answer the quiz.

Please tick the attractions visited on this trip to Chester.

- | | |
|---|--|
| <input type="checkbox"/> Alexanders | <input type="checkbox"/> Grosvenor Museum |
| <input type="checkbox"/> Cheshire Military Museum | <input type="checkbox"/> Grosvenor Park |
| <input type="checkbox"/> Chesterboat | <input type="checkbox"/> Miniature Railway |
| <input type="checkbox"/> Chester Cathedral | <input type="checkbox"/> Guided Walks |
| <input type="checkbox"/> Chester Market | <input type="checkbox"/> The Mall |
| <input type="checkbox"/> Chester Heritage Tour | <input type="checkbox"/> The Mill Hotel Canal Cruise |
| <input type="checkbox"/> City Sightseeing Tour | <input type="checkbox"/> Chester Quasar |
| <input type="checkbox"/> Dewa Roman Experience | <input type="checkbox"/> Rufus Court |

Where did you pick up this leaflet?

Questions

1. What is the date on the Eastgate Clock?

2. What is the name of Chester's river?

3. What time does the Ghosthunter tour depart?

Name:

Address:

Post Code:

Daytime Telephone Number:

Email:

Please hand in to one of the attractions shown on this leaflet or post to the address below (excludes bus and boat tours). The draw will take place every 3 months. Hotels reserve the right to select the dates of the weekend break. Only winners will be notified. Details of rules and conditions are available from the Place Marketing Unit, Chester City Council, The Forum, Chester CH1 2HS.

Data Protection Act. Please tick this box if you do not want to be contacted ☐

Please tick this box if you are willing to receive additional information about Chester Attractions and consent that your details will be held on a database of Chester Place Marketing Unit for a period not exceeding 5 years ☐