

Race and Income in California: Census 2000 Profiles

No. 13, June 2003

Report Author: Alejandra Lopez
Series Advisors: Matthew Snipp & Al Camarillo

© 2003 by CCSRE

Center for Comparative Studies in Race and Ethnicity
Stanford University
Building 240
Stanford, CA 94305-2152

The *CCSRE Race and Ethnicity in California: Demographics Report Series* documents the current socioeconomic, educational, and demographic status of ethnic and racial minority populations in California. Census 2000 data are being used as they become available to examine racial/ethnic diversity, residential segregation, household and family composition, language use, educational attainment, occupation and work status, income, and poverty. The series is made possible by a grant from the James Irvine Foundation, and is accessible on-line at the CCSRE website: www.stanford.edu/dept/csre.

As part of a legacy of racial inequality in the United States, income levels continue to vary across race. To detail such variations in California, this report summarizes Census 2000 income data for families and households, as well as per capita. Information was collected on the last U.S. decennial survey regarding *money income* in the year 1999, defined by the Census Bureau (DaNavas-Walt & Cleveland, 2002) as follows:

Money income data are collected for all people in the sample 15 years and over. Money income includes earnings, unemployment compensation, workers' compensation, social security, supplemental security income, public assistance, veterans' payments, survivor benefits, pension or retirement income, interest, dividends, rents, royalties, estates, trusts, educational assistance, alimony, child support, assistance from outside the household, and other miscellaneous money income. It is income before deductions for taxes or other expenses and does not include lump-sum payments or capital gains.

Measures discussed in this report include income distributions for families and households, median incomes for families and households, and per capita income (definitions paraphrased from U.S. Department of Commerce, 2002):

Family income – includes income of all family members 15 years and older related to the householder.

Household income – includes income of all individuals 15 years and older in the household, regardless of whether they are related to the householder. Because many households consist of only one person, average household income is usually less than average family income (see Table 1 below).

Median income – divides the income distribution into two equal parts, one half of the cases falling below the median income and one half above the median; computed for families and households.

Per capita income – the mean income computed for every man, woman, and child in a particular group; derived by dividing the total income of a particular group by the total population in that group.

Table 1 lists median incomes at the family, household, and per capita levels for each group identified by race as well as the total population in California and the nation as a whole. In general, income levels are higher in California than in the U.S. overall; the exceptions to this are per capita incomes for Latinos and individuals identified as Some Other Race, both of which are lower in California compared to the nation at large.

Examining family income data in California across race, Whites and Asians have the highest median incomes (at \$65,342 and \$61,383, respectively), followed by Pacific Islanders (\$50,641) and families with householders identified with Two or More Races (\$42,566). Blacks, American Indians, Latinos, and Some Other Race families all have lower median incomes (ranging between \$34,079 and \$39,726). The same general pattern holds at the national level.

Table 1: Median and Per Capita Income (Dollars) by Race

Race of Householder or Individual	California	United States
<i>Family</i>	53,025	50,046
White, not Latino	65,342	54,698
Asian	61,383	59,324
Pacific Islander	50,641	45,915
Two or More Races	42,566	39,432
Black	39,726	33,255
American Indian	38,547	33,144
Latino	35,980	34,397
Some Other Race	34,079	32,398
<i>Household</i>	47,493	41,994
Asian	55,366	51,908
White, not Latino	53,734	45,367
Pacific Islander	48,650	42,717
Two or More Races	40,371	35,587
American Indian	36,547	30,599
Latino	36,532	33,676
Some Other Race	35,265	32,694
Black	34,956	29,423
<i>Per Capita</i>	22,711	21,587
White, not Latino	31,700	24,819
Asian	22,050	21,823
Black	17,447	14,437
Pacific Islander	15,610	15,054
American Indian	15,226	12,893
Two or More Races	14,573	13,405
Latino	11,674	12,111
Some Other Race	10,579	10,813

Source: Census 2000 SF3

In these analyses, race of the householder is used as a proxy for race of the family and race of the household since these are the only race-specific income data available from the Census Bureau. It should be kept in mind that there are families and households for whom the race of the householder is not representative of all its members.

Family Income

Income levels also vary in different parts of the state. Using county level data, Map Set 1 visually displays differences in median family income for each race group, with darker shading indicating higher incomes. Note that a standardized shading scheme has been used to facilitate comparison across groups. For specific county data, see Appendix Table 3.

Another way to compare family income levels across race groups is to examine the distribution of incomes. In Figure 1, sixteen income categories are used, ranging from “Less than \$10,000” at one

Map Set 1: Family Median Income (in Dollars) by Race

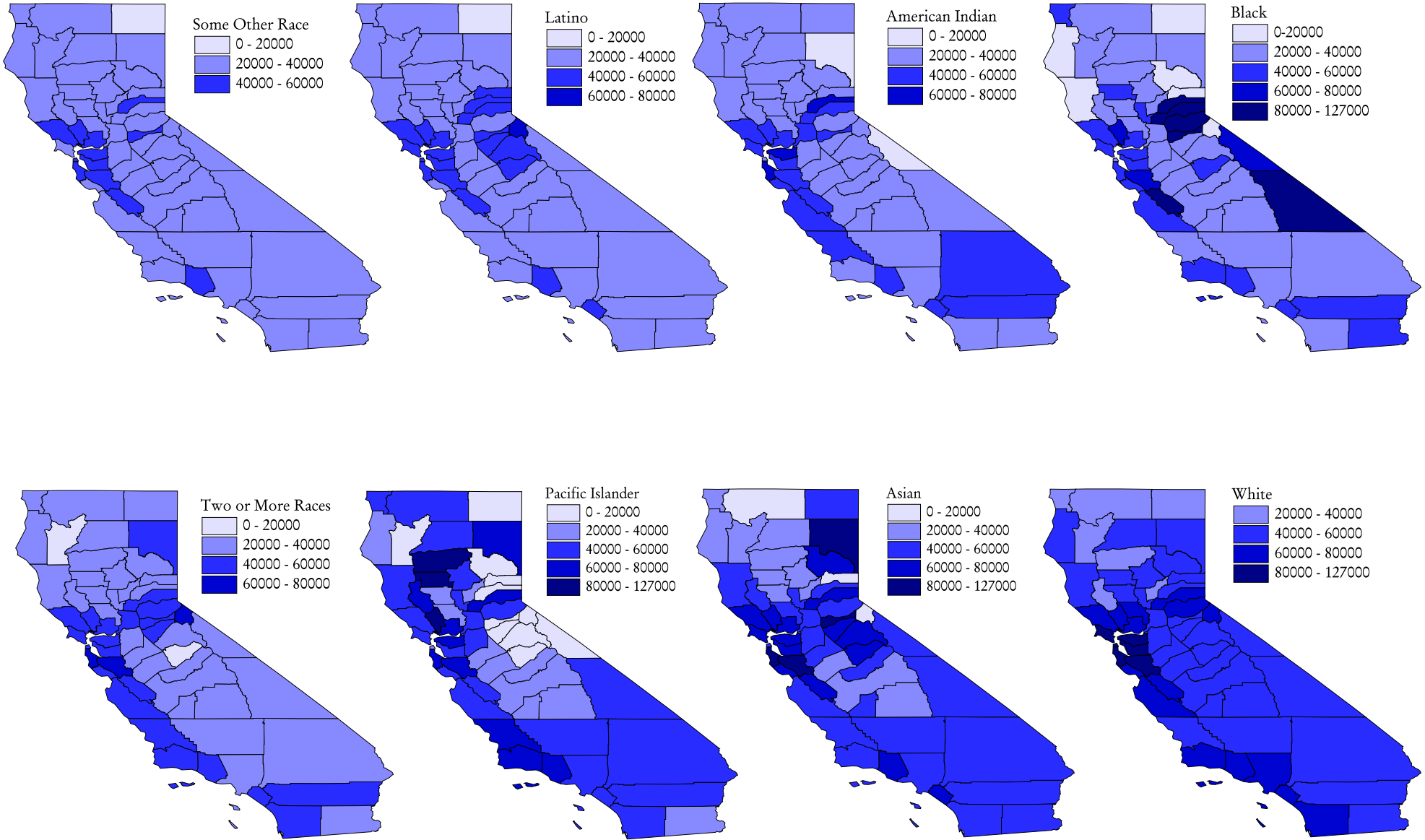


Figure 1: Family Income Distribution by Race in California

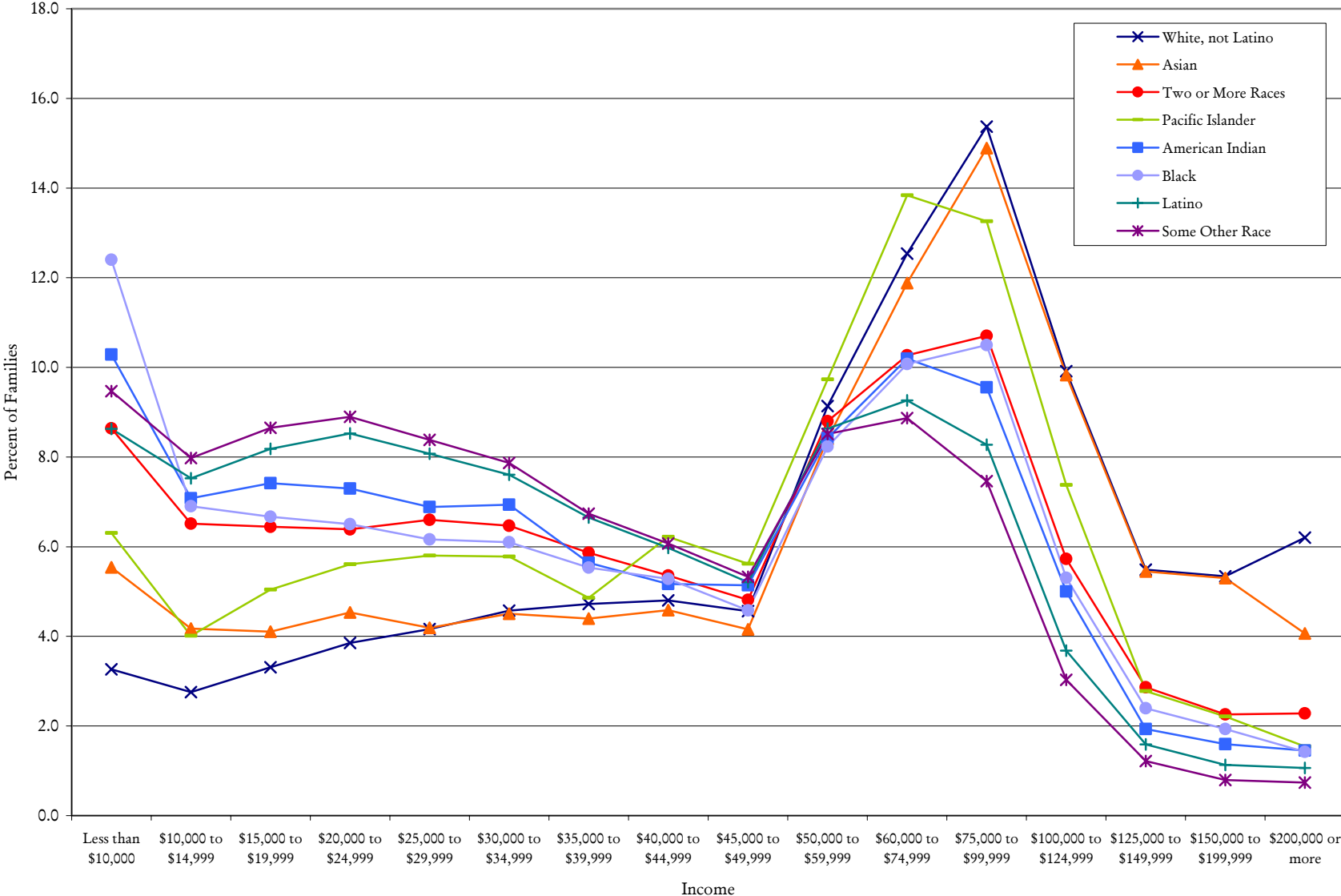


Figure 2: Family Income Distribution by Region in California -- Total Population

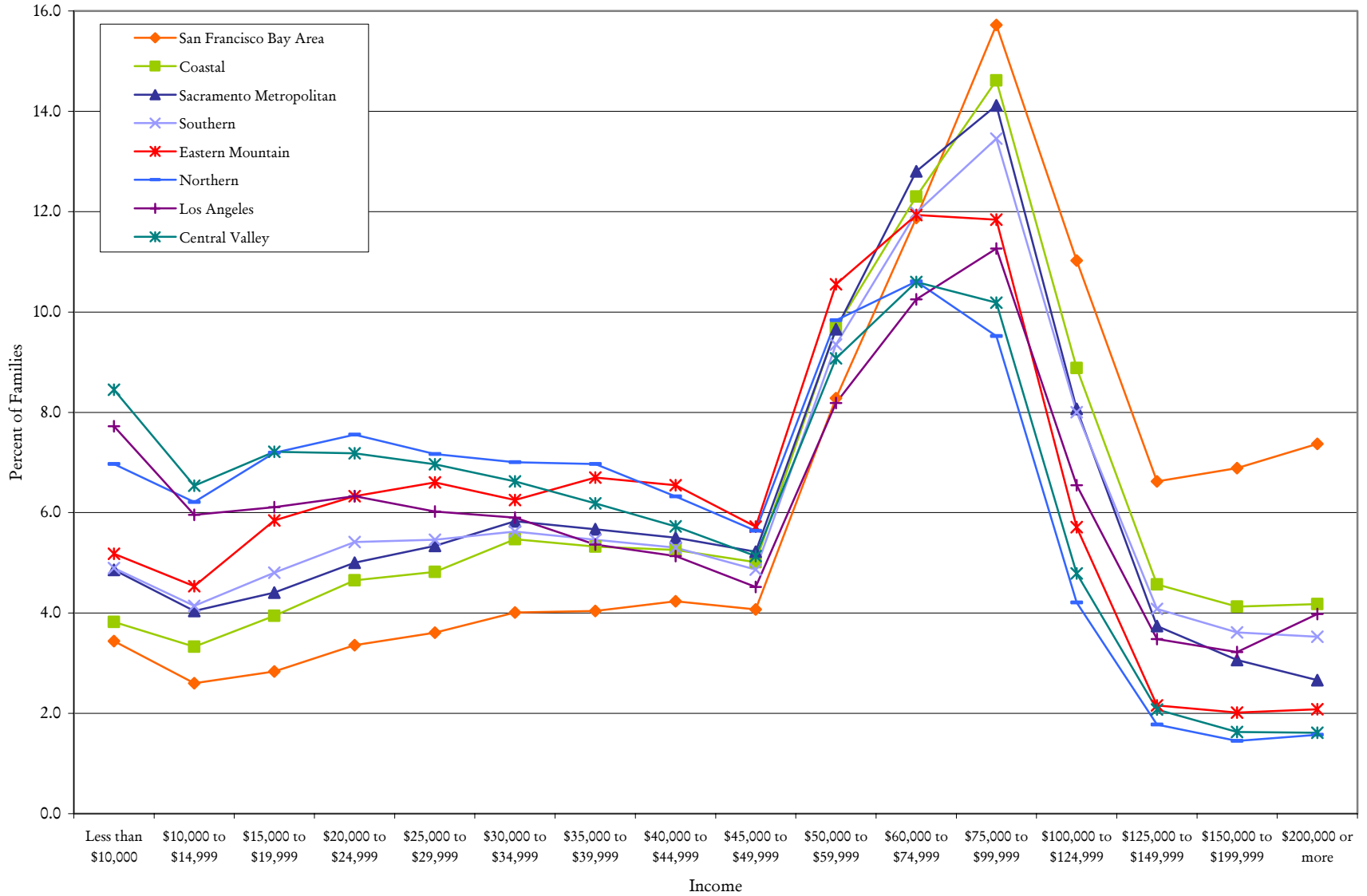
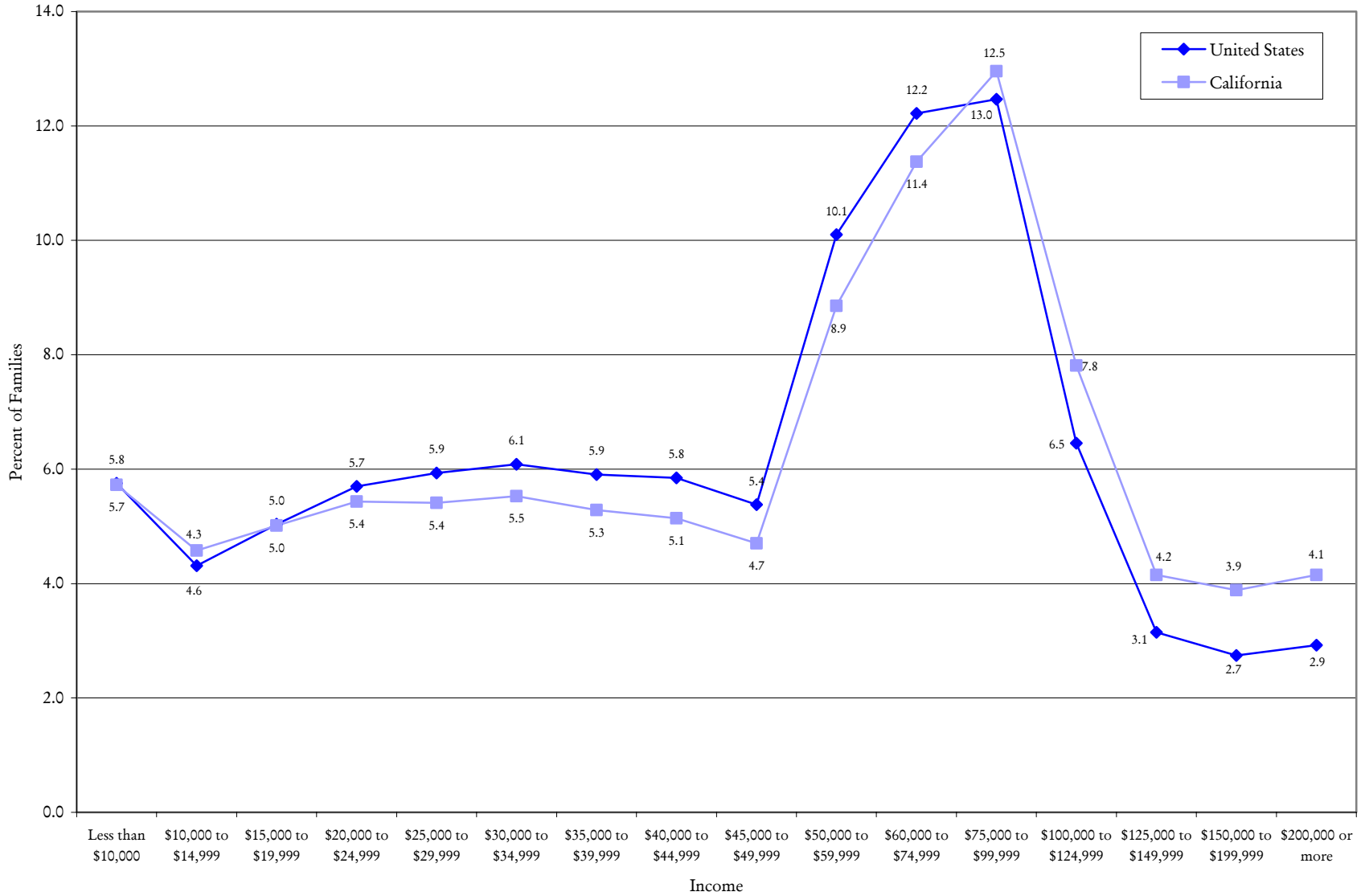


Figure 3: Family Income Distribution in California and the U.S. -- Total Population



end of the spectrum to “\$200,000 or more” at the other. This illustration indicates that there is a greater range in the percentage of each race population in the lowest income bracket, compared with other income categories, especially those close to the state median, \$53,025.

To help contextualize the family income data for California, Figure 2 illustrates regional differences in the income distribution for the statewide population (see Appendix Table 1 for specific regional data used to create this graph); similarly, Figure 3 offers a national comparison.

Household Income

Returning to Table 1, data are presented regarding median household income. A similar pattern as that for median family income is evident across race groups in California: Asians and Whites with the highest income levels (\$55,366, and \$53,734, respectively), followed by Pacific Islanders (\$48,650) and households headed by individuals identified with Two or More Races (\$40,371); and, American Indians, Latinos, Some Other Race households, and Blacks have the lowest income levels (ranging from \$34,956 to \$36,547). Again, the same general pattern holds at the national level as well, the only difference being that American Indians have a lower median than Latinos and Some Other Race households, whereas the reverse is true in California.

Map Set 2 summarizes median household income across race group in California, similar to Map Set 1 with regard to median family income; again, darker shading indicating higher incomes. For specific county data, see Appendix Table 4. Figure 4 summarizes household income distributions for each race population in the state. As was the case with family income distributions, the largest range is evident at the lowest income bracket, “Less than \$10,000”, especially compared with income categories near the median household income, \$47,493.

Also, to help contextualize the household income data for California, Figures 5 and 6 illustrate regional and national data, respectively. (Note: Appendix Table 2 lists specific regional data used to create Figure 5.)

Per Capita Income

The bottom portion of Table 1 lists per capita income rates for the total population and each race group. Though the same general pattern held for family and household median incomes, the ordering at the per capita level is a bit different. Whites and Asians in California maintain the highest per capita income levels (\$31,700 and \$22,050, respectively), following them are Blacks

¹ The state’s 58 counties were divided into the following eight geographic areas:

- Northern: Butte, Colusa, Del Norte, Glenn, Humboldt, Lassen, Lake, Mendocino, Modoc, Nevada, Plumas, Shasta, Sierra, Siskiyou, Sutter, Tehama, Trinity, Yuba;
- Sacramento Metropolitan: El Dorado, Placer, Sacramento, and Yolo;
- San Francisco Bay Area: Alameda, Contra Costa, Marin, Napa, San Francisco, San Mateo, Santa Clara, Solano, Sonoma;
- Eastern Mountain: Alpine, Amador, Calaveras, Inyo, Mariposa, Mono, Tuolumne;
- Central Valley: Fresno, Kern, Kings, Madera, Merced, San Joaquin, Stanislaus, Tulare;
- Coastal: Monterey, San Benito, San Luis Obispo, Santa Barbara, Santa Cruz, Ventura;
- Los Angeles: Los Angeles;
- Southern: Imperial, Orange, Riverside, San Bernardino, San Diego.

Map Set 2: Household Median Income (in Dollars) by Race

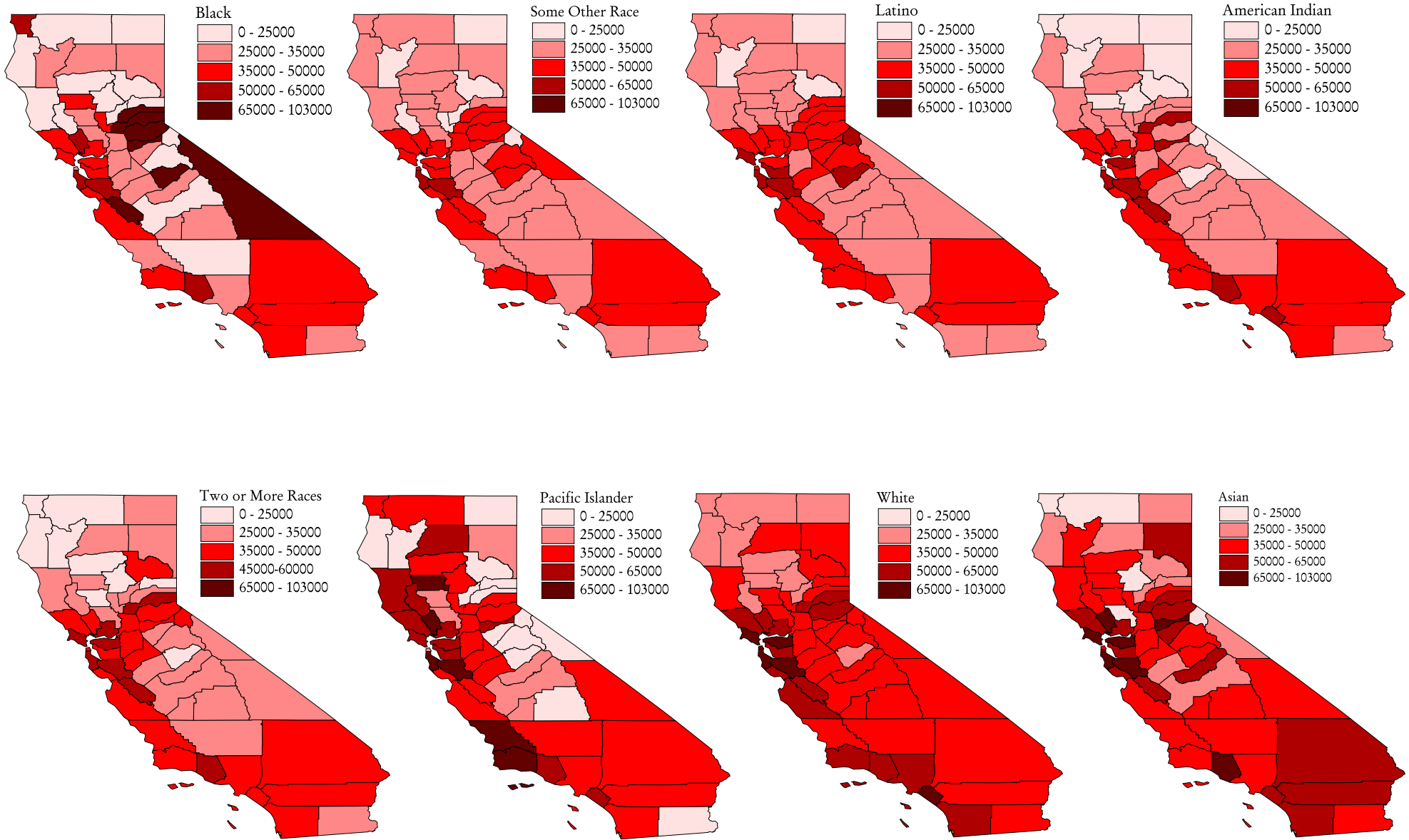


Figure 4: Household Income Distribution by Race in California

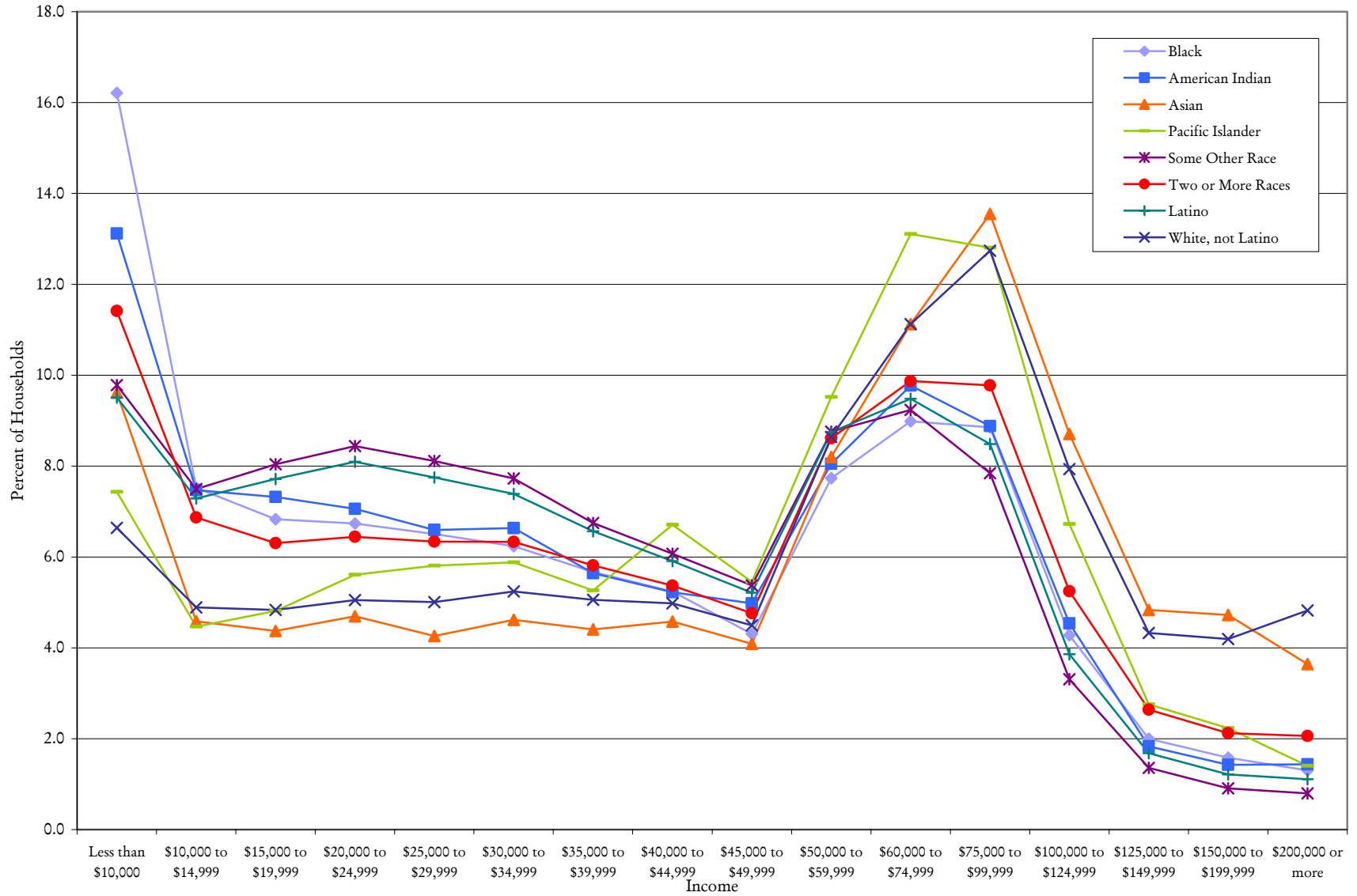


Figure 5: Household Income Distribution by Region in California -- Total Population

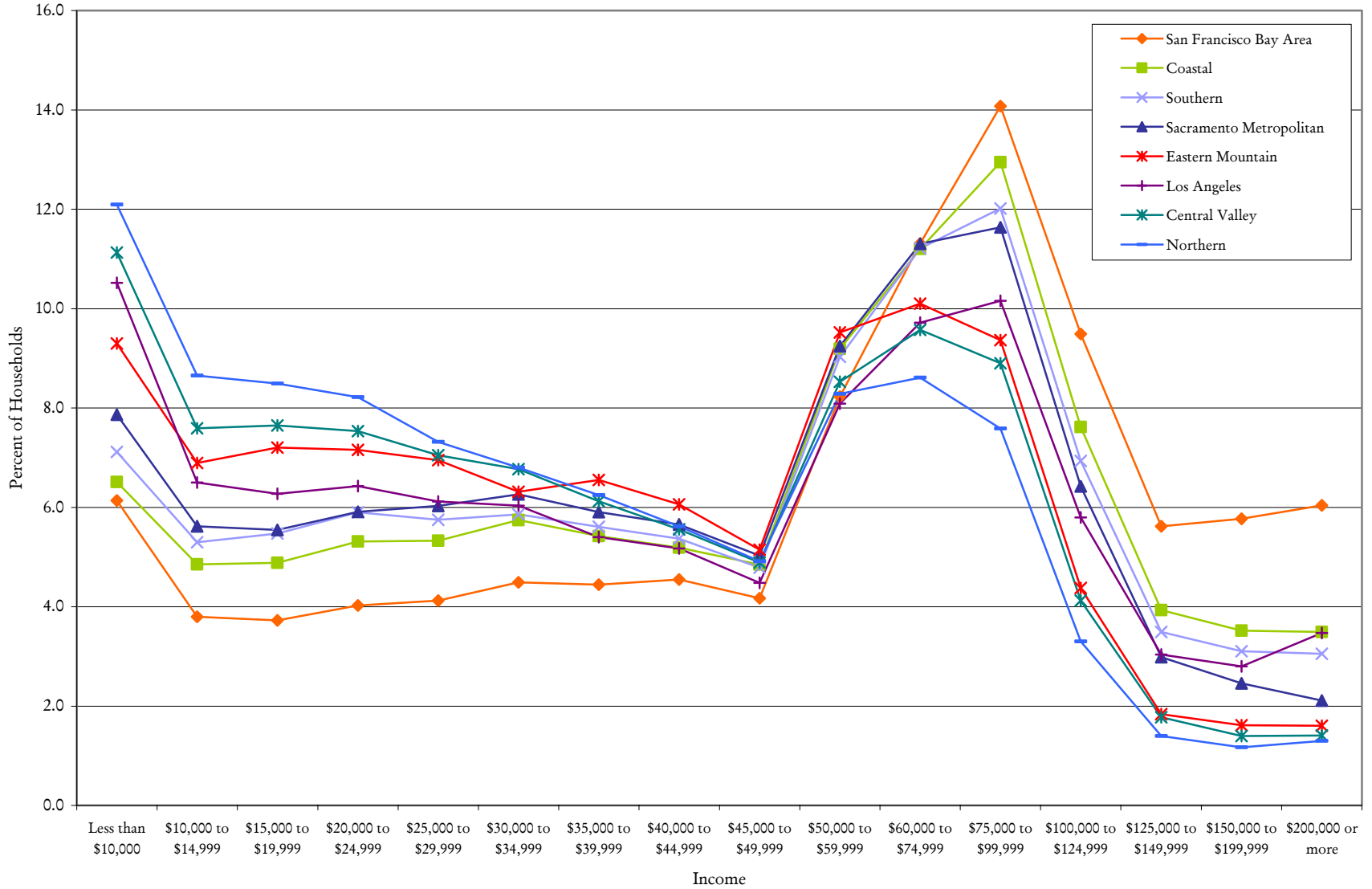
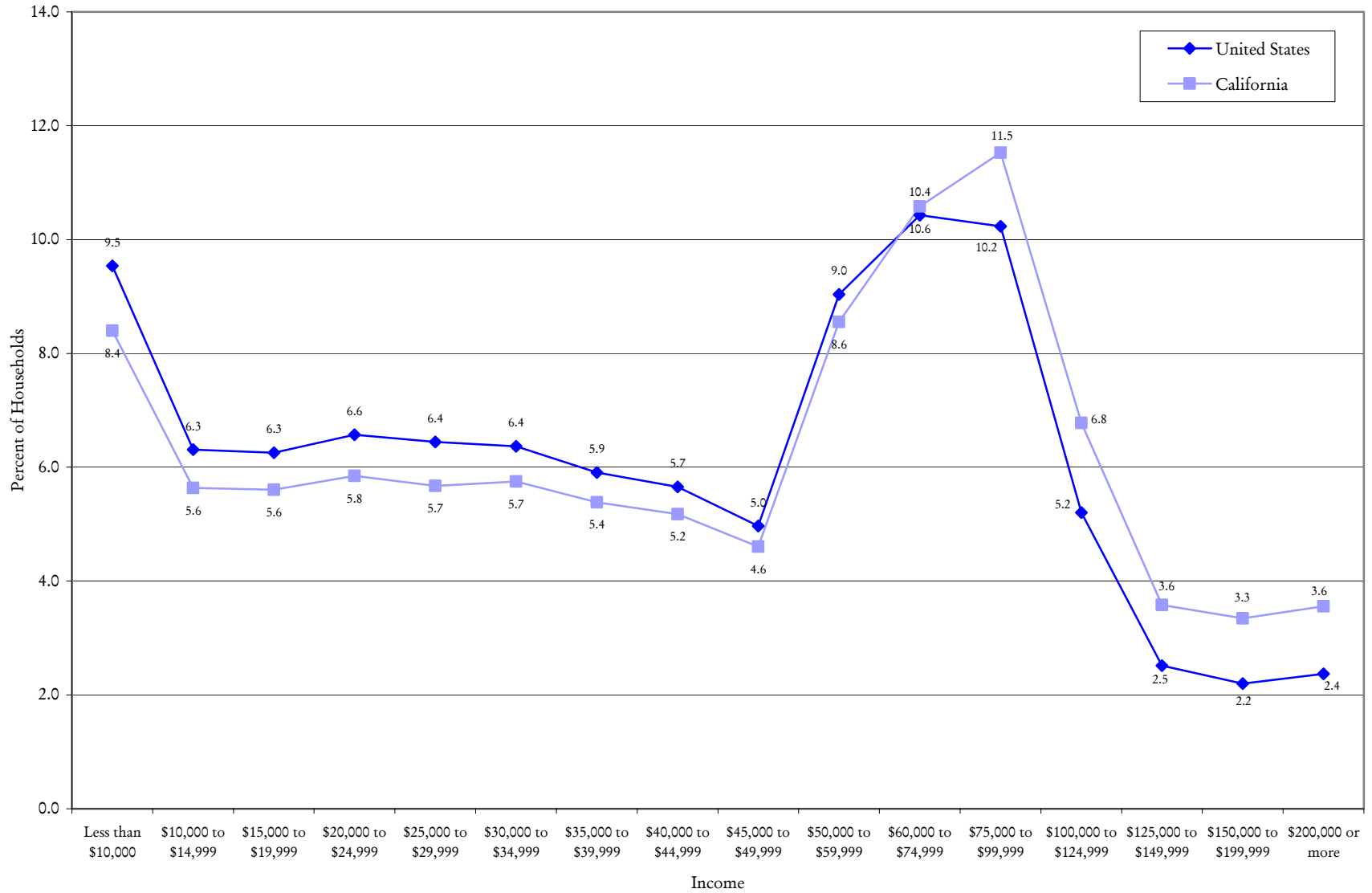


Figure 6: Household Income Distribution in California and the U.S. -- Total Population

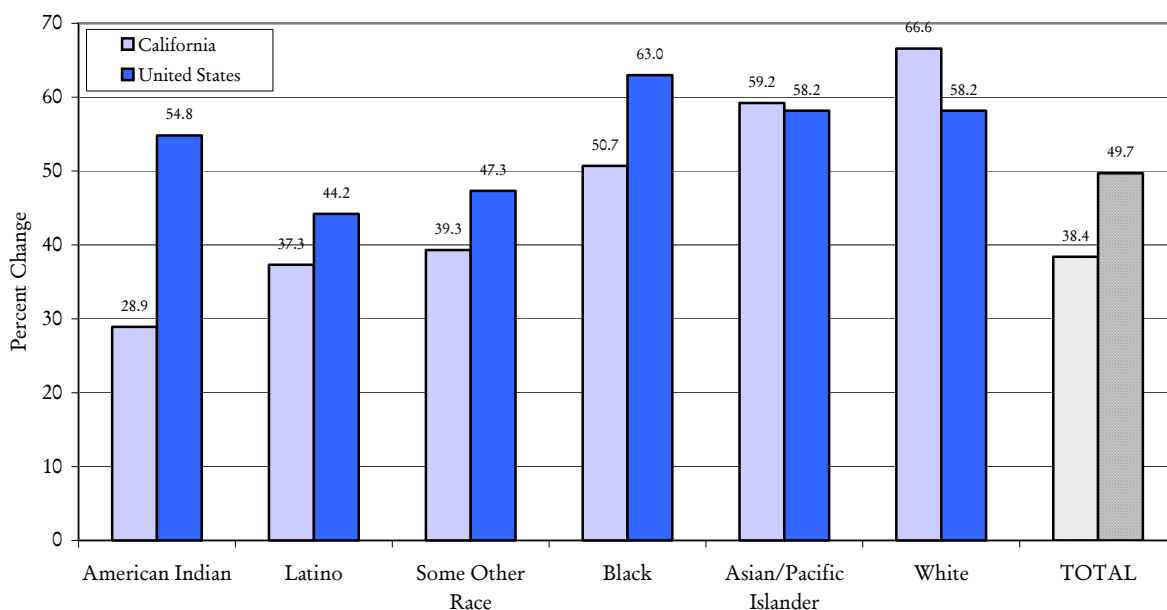


(\$17,447), Pacific Islanders (\$15,610), American Indians (\$15,226), and Two or More Races (\$14,573) individuals; Latinos and Some Other Race individuals have the lowest per capita income levels (\$11,674 and \$10,579, respectively). At the national level, Whites and Asians also have the highest per capita incomes, and Latinos and Some Other Race individuals the lowest, with the other groups ranking in a slightly different order (see table).

To illustrate per capita income levels in various parts of the state, Map Set 3 summarizes county data for each race population, again, with darker shading indicating higher incomes. For specific county data, see Appendix Table 5.

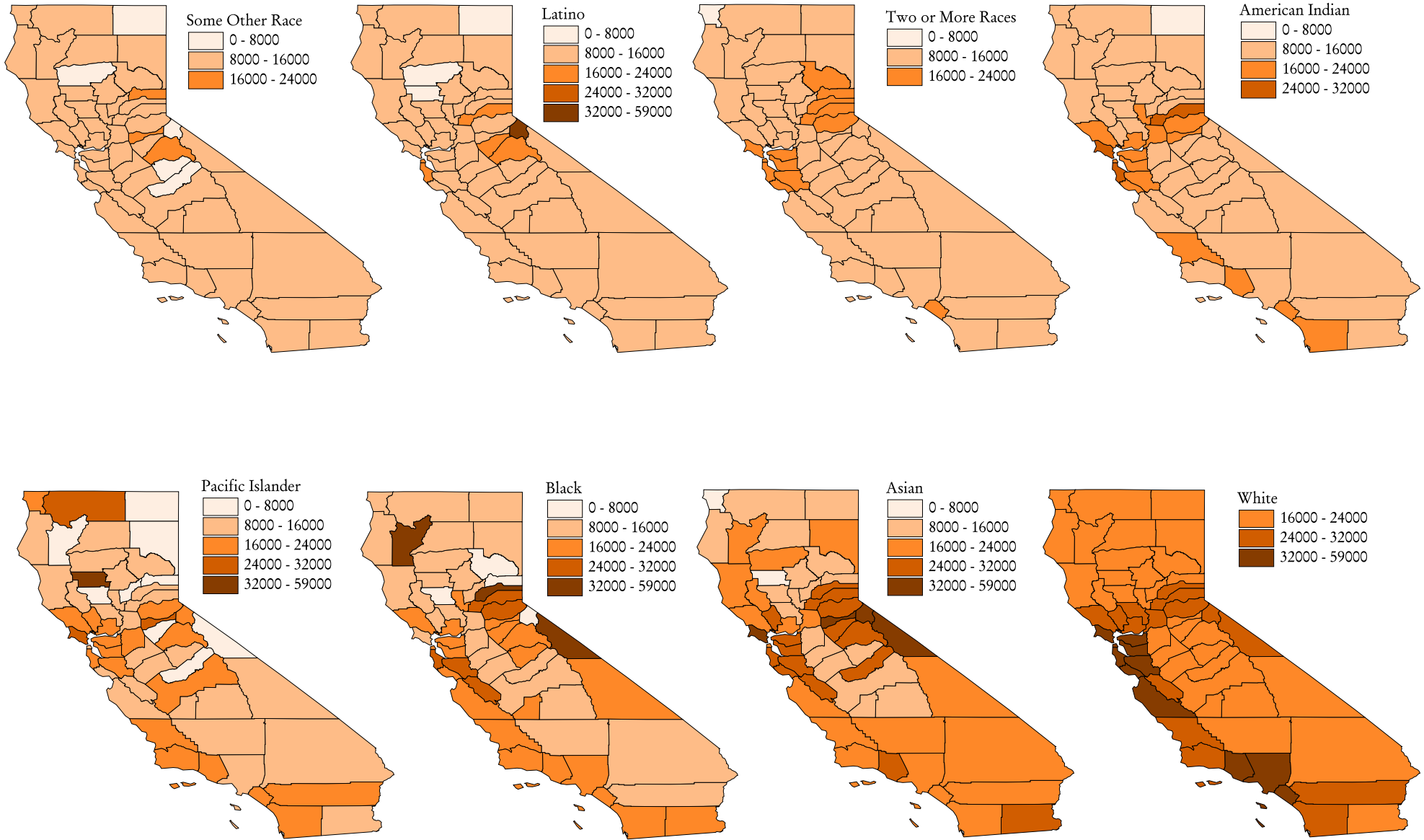
Another way to evaluate per capita income differences across race groups is to consider the percent change that has occurred over the past decade. Thus, Figure 7 illustrates growth rates in the per capita income for each race as well as for the total population, in California and the U.S. overall. While the national per capita income grew 49.7 percent between 1990 and 2000 (as measured in 1989 and 1999 on the census surveys), the state per capita income growth was less, at 38.4 percent. Changes in national median income levels for both families and households were also higher than those for California: for families, 39.7 percent in the U.S. versus 32.7 percent in California; and for households, 42.1 percent in the U.S. versus 30.7 percent in the state (these growth rates for family and household medians are not shown in any data summaries).

Figure 7: Change in Per Capita Income 1990 to 2000, by Race



Focusing on the California data, American Indians experienced less growth (28.9 percent) in per capita income over the past decade than other groups; this is also the only group with a lower change rate in per capita income than the state overall. Latinos and people identified as Some Other Race had growth rates similar to the state (37.3 and 39.3 percent, respectively); the other groups all experienced more growth in their per capita income than the state as a whole, with

Map Set 3: Per Capita Income (in Dollars) by Race



Whites and Asian/Pacific Islanders² at the top (66.6 and 59.2 percent, respectively), followed by Blacks (50.7 percent).

Examining changes in per capita income at the national level present, Blacks experienced the largest growth between 1990 and 2000, 60.3 percent, followed closely by Whites and Asians/Pacific Islanders (both with growth rates of 58.2 percent). Unlike California, American Indians in the U.S. overall experienced greater growth in their per capita income, 54.8 percent, compared to the nation overall (49.7 percent). Latinos (44.2 percent) and people identified as Some Other Race (47.3 percent) had the lowest growth in per capita income over the past decade.

References

DaNavas-Walt, C., & Cleveland, R. (2002). *Money income in the United States: 2001*. U.S. Census Bureau, Current Population Reports, P60-218. Washington, DC: U.S. Government Printing Office.

U.S. Department of Commerce, Bureau of the Census. (2002). *Census 2000 Summary File 3*. Technical Documentation.

² Asians and Pacific Islanders were grouped together for this analysis to make the per capita income data from the 2000 Census comparable with data from the 1990 Census.

Appendix Table 1: Regional Family Income Distribution -- Total Population

REGION	San Francisco Bay Area	Coastal	Sacramento Metropolitan	Southern	Eastern Mountain	Northern	Los Angeles	Central Valley
Less than \$10,000	3.4	3.8	4.9	4.9	5.2	7.0	7.7	8.5
\$10,000 to \$14,999	2.6	3.3	4.0	4.1	4.5	6.2	6.0	6.5
\$15,000 to \$19,999	2.8	3.9	4.4	4.8	5.8	7.2	6.1	7.2
\$20,000 to \$24,999	3.4	4.7	5.0	5.4	6.3	7.6	6.3	7.2
\$25,000 to \$29,999	3.6	4.8	5.3	5.5	6.6	7.2	6.0	7.0
\$30,000 to \$34,999	4.0	5.5	5.8	5.6	6.3	7.0	5.9	6.6
\$35,000 to \$39,999	4.0	5.3	5.7	5.5	6.7	7.0	5.4	6.2
\$40,000 to \$44,999	4.2	5.3	5.5	5.3	6.5	6.3	5.1	5.7
\$45,000 to \$49,999	4.1	5.0	5.2	4.9	5.7	5.6	4.5	5.1
\$50,000 to \$59,999	8.3	9.7	9.7	9.4	10.6	9.8	8.2	9.1
\$60,000 to \$74,999	11.9	12.3	12.8	12.0	11.9	10.6	10.3	10.6
\$75,000 to \$99,999	15.7	14.6	14.1	13.5	11.8	9.5	11.3	10.2
\$100,000 to \$124,999	11.0	8.9	8.1	8.0	5.7	4.2	6.5	4.8
\$125,000 to \$149,999	6.6	4.6	3.7	4.1	2.2	1.8	3.5	2.1
\$150,000 to \$199,999	6.9	4.1	3.1	3.6	2.0	1.4	3.2	1.6
\$200,000 or more	7.4	4.2	2.7	3.5	2.1	1.6	4.0	1.6
<i>Total Number of Families</i>	<i>1,609,540</i>	<i>493,061</i>	<i>449,157</i>	<i>2,157,157</i>	<i>47,977</i>	<i>288,521</i>	<i>2,154,311</i>	<i>785,765</i>

Source: Census 2000 SF3

Appendix Table 2: Regional Household Income Distribution -- Total Population

REGION	San Francisco Bay Area	Coastal	Southern	Sacramento Metropolitan	Eastern Mountain	Los Angeles	Central Valley	Northern
Less than \$10,000	6.1	6.5	7.1	7.9	9.3	10.5	11.1	12.1
\$10,000 to \$14,999	3.8	4.9	5.3	5.6	6.9	6.5	7.6	8.7
\$15,000 to \$19,999	3.7	4.9	5.5	5.5	7.2	6.3	7.6	8.5
\$20,000 to \$24,999	4.0	5.3	5.9	5.9	7.2	6.4	7.5	8.2
\$25,000 to \$29,999	4.1	5.3	5.7	6.0	6.9	6.1	7.0	7.3
\$30,000 to \$34,999	4.5	5.7	5.9	6.3	6.3	6.0	6.8	6.8
\$35,000 to \$39,999	4.4	5.4	5.6	5.9	6.5	5.4	6.1	6.2
\$40,000 to \$44,999	4.5	5.2	5.4	5.7	6.1	5.2	5.6	5.6
\$45,000 to \$49,999	4.2	4.8	4.8	5.0	5.2	4.5	4.9	4.9
\$50,000 to \$59,999	8.2	9.2	9.0	9.2	9.5	8.1	8.5	8.3
\$60,000 to \$74,999	11.3	11.2	11.2	11.3	10.1	9.7	9.6	8.6
\$75,000 to \$99,999	14.1	12.9	12.0	11.6	9.4	10.2	8.9	7.6
\$100,000 to \$124,999	9.5	7.6	6.9	6.4	4.4	5.8	4.1	3.3
\$125,000 to \$149,999	5.6	3.9	3.5	3.0	1.8	3.0	1.8	1.4
\$150,000 to \$199,999	5.8	3.5	3.1	2.5	1.6	2.8	1.4	1.2
\$200,000 or more	6.0	3.5	3.1	2.1	1.6	3.5	1.4	1.3
<i>Total Number of Households</i>	<i>2,468,024</i>	<i>701,358</i>	<i>3,006,699</i>	<i>665,722</i>	<i>70,099</i>	<i>3,136,279</i>	<i>1,033,880</i>	<i>429,959</i>

Source: Census 2000 SF3

Appendix Table 3: County Median Family Income (in Dollars), by Race

	TOTAL	Some Other Race	Latino	American Indian	Black	Two or More Races	Pacific Islander	Asian	White, not Latino
Alameda	65,857	47,644	49,841	54,858	40,248	54,363	52,917	70,866	80,522
Alpine	50,250	33,750	61,250	24,167	--	60,417	--	--	62,031
Amador	51,226	46,250	45,179	54,821	80,057	47,200	--	98,529	51,316
Butte	41,010	26,424	28,265	30,190	25,417	29,491	55,469	25,741	42,943
Calaveras	47,379	39,688	42,500	32,167	38,438	40,833	--	77,635	48,123
Colusa	40,138	33,064	32,470	26,685	28,750	25,625	33,438	40,000	50,625
Contra Costa	73,039	46,036	49,337	61,891	49,468	59,876	65,945	75,176	83,334
Del Norte	36,056	38,438	27,287	23,600	40,208	21,359	44,886	23,333	38,138
El Dorado	60,250	37,138	39,358	32,917	85,000	50,333	48,929	55,282	61,743
Fresno	38,455	26,663	27,945	28,180	26,201	29,803	27,500	33,034	52,928
Glenn	37,023	31,330	28,657	20,921	47,969	33,750	102,264	31,985	41,450
Humboldt	39,370	29,659	28,604	27,325	16,875	27,614	21,250	27,500	41,451
Imperial	35,226	28,611	29,666	26,838	40,929	31,790	20,625	50,903	53,413
Inyo	44,970	25,313	29,531	29,453	102,264	31,429	55,833	49,028	50,195
Kern	39,403	26,548	27,261	30,566	25,564	34,292	53,333	45,380	50,060
Kings	38,111	27,387	28,486	33,750	30,393	26,622	33,929	41,806	49,427
Lake	35,818	24,740	26,630	26,354	20,833	27,366	63,352	41,058	37,875
Lassen	43,398	26,458	29,375	19,345	35,833	42,292	60,469	90,541	45,396
Los Angeles	46,452	31,800	33,363	36,522	37,190	38,313	45,471	54,108	69,396
Madera	39,226	27,927	28,653	33,942	36,250	29,157	29,688	51,071	48,264
Marin	88,934	39,643	45,845	50,833	40,197	55,063	48,846	75,746	97,087
Mariposa	42,655	37,431	44,861	33,333	54,643	19,792	--	73,750	43,355
Mendocino	42,168	26,566	29,359	26,410	19,500	33,571	51,071	53,833	45,942
Merced	38,009	29,447	30,025	37,667	27,226	33,807	36,563	30,618	48,514
Modoc	35,978	17,857	16,369	23,250	--	25,208	--	46,250	38,651
Mono	50,487	34,318	27,689	15,000	66,250	25,714	--	52,159	54,157
Monterey	51,169	36,189	37,006	43,151	50,135	46,539	49,167	52,547	66,514
Napa	61,410	45,396	42,862	48,000	63,594	54,779	126,788	69,575	66,806
Nevada	52,697	46,016	47,528	63,750	100,702	37,212	17,159	55,761	53,116
Orange	64,611	38,977	41,010	48,542	54,181	50,353	58,107	61,785	78,354
Placer	65,858	39,806	46,403	58,750	81,484	55,446	66,875	71,610	67,215
Plumas	46,119	21,518	27,250	23,667	15,893	26,625	--	65,000	47,432
Riverside	48,409	35,928	36,289	44,172	42,482	42,140	41,994	58,443	56,195
Sacramento	50,717	35,797	38,443	42,184	36,539	40,465	42,105	49,392	56,843
San Benito	60,665	45,396	47,388	47,083	91,169	54,583	46,696	68,281	71,436
San Bernardino	46,574	36,491	38,070	40,820	38,750	39,050	47,724	58,750	53,495
San Diego	53,438	31,641	33,993	38,868	39,913	40,951	49,631	56,764	63,330
San Francisco	63,545	46,683	46,809	35,000	35,943	51,571	31,985	56,679	89,316
San Joaquin	46,919	32,198	33,956	34,188	36,100	38,947	42,989	40,454	56,979
San Luis Obispo	52,447	32,742	36,098	50,588	33,333	47,639	73,250	57,649	55,030
San Mateo	80,737	51,554	54,030	65,865	57,886	68,327	67,500	82,232	93,132
Santa Barbara	54,042	34,256	35,983	38,819	46,658	43,915	69,205	56,120	65,548
Santa Clara	81,717	51,410	53,017	53,817	65,596	65,407	67,375	86,508	94,761
Santa Cruz	61,941	36,878	39,405	46,524	44,239	47,197	51,750	67,917	71,621
Shasta	40,491	29,375	31,209	29,250	34,625	27,808	55,921	32,237	41,402
Sierra	42,756	29,107	46,083	31,250	--	32,500	--	--	42,796
Siskiyou	36,890	25,341	27,112	23,583	30,000	31,875	44,904	19,191	38,722
Solano	60,597	43,429	46,551	46,136	52,000	53,905	60,517	68,996	65,050
Sonoma	61,921	42,542	44,069	50,856	51,234	46,822	57,750	61,392	65,777
Stanislaus	44,703	33,995	35,134	38,786	36,269	36,553	38,125	41,238	50,296
Sutter	44,330	25,021	29,874	31,042	47,112	34,605	55,938	44,211	50,615
Tehama	37,277	24,981	26,895	37,813	27,188	24,688	85,215	38,155	39,235
Trinity	34,343	22,500	22,500	22,450	28,750	20,000	--	35,833	35,948
Tulare	36,297	25,973	26,807	29,643	30,744	31,444	23,750	37,109	47,227
Tuolumne	44,327	35,000	41,190	22,375	29,107	38,056	9,688	60,385	44,929
Ventura	65,285	41,892	44,575	55,000	55,075	51,840	65,764	75,720	74,967
Yolo	51,623	35,403	37,051	38,462	32,234	39,688	29,559	51,786	60,535
Yuba	34,103	26,689	28,965	32,083	25,341	30,224	26,458	32,010	36,070

Source: Census 2000 SF3

Appendix Table 4: County Median Household Income (in Dollars), by Race

	<i>TOTAL</i>	Black	Some Other Race	Latino	American Indian	Two or More Races	Pacific Islander	White, not Latino	Asian
Alameda	55,946	35,909	49,091	50,001	47,525	49,814	54,231	64,200	62,450
Alpine	41,875	--	7,500	63,750	24,583	46,667	--	46,591	--
Amador	42,280	80,057	36,000	37,750	53,482	39,861	63,750	41,935	92,778
Butte	31,924	17,000	25,065	26,443	24,511	24,453	49,028	33,442	21,777
Calaveras	41,022	29,500	29,286	40,833	30,298	33,063	--	41,439	58,438
Colusa	35,062	28,472	31,921	31,883	26,250	21,492	33,438	40,421	39,792
Contra Costa	63,675	44,270	47,405	49,423	57,500	53,942	63,589	69,846	69,600
Del Norte	29,642	55,192	32,500	27,335	21,369	21,339	44,886	31,601	23,333
El Dorado	51,484	71,797	38,191	38,869	32,105	40,074	49,107	52,541	53,667
Fresno	34,725	23,301	27,156	27,948	26,919	28,753	31,250	42,931	31,542
Glenn	32,107	48,011	30,793	27,450	20,804	28,625	102,264	33,970	37,622
Humboldt	31,226	21,091	25,700	25,826	25,281	20,776	25,000	32,233	30,145
Imperial	31,870	33,269	27,705	28,097	25,378	31,263	20,625	42,544	44,706
Inyo	35,006	102,264	28,125	30,341	25,380	27,639	43,750	37,270	48,750
Kern	35,446	22,489	26,956	27,263	27,312	31,136	43,846	41,368	44,113
Kings	35,749	28,592	27,571	28,641	33,371	27,286	32,500	42,370	37,986
Lake	29,627	16,694	23,375	25,362	26,133	25,089	63,352	30,540	36,786
Lassen	36,310	30,750	31,029	30,526	23,571	31,813	27,143	37,108	51,406
Los Angeles	42,189	31,905	32,616	33,820	36,201	36,292	42,363	53,978	47,631
Madera	36,286	31,886	28,385	28,964	33,716	29,360	29,688	41,404	51,964
Marin	71,306	37,314	45,652	50,221	41,681	52,567	56,442	75,341	70,815
Mariposa	34,626	65,357	37,431	51,125	23,542	17,308	11,250	34,877	40,000
Mendocino	35,996	23,958	27,532	30,023	25,688	28,375	51,071	37,644	47,083
Merced	35,532	25,454	29,556	29,884	30,964	31,990	40,917	41,906	30,500
Modoc	27,522	8,750	18,083	16,012	20,179	29,375	--	29,459	31,875
Mono	44,992	66,250	35,272	29,301	20,357	25,179	--	48,644	34,286
Monterey	48,305	44,423	38,557	39,240	39,934	45,255	43,839	55,007	48,243
Napa	51,738	62,969	46,110	43,717	47,596	46,599	87,339	53,018	69,555
Nevada	45,864	78,592	45,450	46,667	34,464	32,188	17,159	46,078	45,395
Orange	58,820	49,972	42,824	44,676	50,833	49,521	53,929	65,160	58,501
Placer	57,535	70,458	39,892	44,976	53,918	50,432	49,219	58,648	64,167
Plumas	36,351	9,018	17,692	21,538	22,750	38,750	--	38,101	28,906
Riverside	42,887	38,644	36,389	36,469	41,011	39,714	41,815	46,729	50,923
Sacramento	43,816	33,219	35,181	37,171	38,281	39,245	41,047	47,133	44,501
San Benito	57,469	74,000	45,676	47,694	52,917	54,896	46,696	64,555	59,250
San Bernardino	42,066	35,730	36,819	38,068	37,329	37,125	45,134	45,555	54,704
San Diego	47,067	36,389	32,755	34,555	36,385	38,486	47,097	52,089	51,981
San Francisco	55,221	29,640	47,651	46,553	30,994	49,040	33,750	65,431	49,596
San Joaquin	41,282	30,511	32,489	33,282	32,074	36,366	44,356	47,075	36,952
San Luis Obispo	42,428	30,712	33,012	35,233	38,169	35,682	73,250	44,302	39,688
San Mateo	70,819	51,870	53,497	55,089	54,886	60,502	65,510	75,507	78,263
Santa Barbara	46,677	39,219	35,368	36,413	36,462	37,722	66,467	51,864	42,800
Santa Clara	74,335	58,918	55,318	55,572	53,903	61,098	65,275	80,027	82,804
Santa Cruz	53,998	43,967	38,507	41,130	46,602	41,274	46,094	58,583	56,176
Shasta	34,335	26,042	26,607	29,080	25,541	25,507	57,105	35,071	32,039
Sierra	35,827	--	29,107	38,750	31,250	20,000	--	36,138	31,250
Siskiyou	29,530	21,083	25,052	25,040	20,641	20,952	42,885	30,594	18,910
Solano	54,099	47,830	45,065	46,668	40,371	50,833	57,125	56,360	64,569
Sonoma	53,076	48,033	46,370	46,580	47,563	44,273	59,188	54,492	58,333
Stanislaus	40,101	31,741	34,463	35,015	35,165	35,548	37,167	42,590	41,641
Sutter	38,375	38,173	24,417	28,815	29,966	33,355	43,750	41,341	41,274
Tehama	31,206	22,313	25,195	26,638	30,586	20,948	40,500	32,123	39,107
Trinity	27,711	28,409	22,375	22,656	20,714	19,348	--	28,587	35,833
Tulare	33,983	25,598	27,090	27,437	29,750	29,588	22,708	40,612	36,637
Tuolumne	38,725	22,361	35,781	37,316	26,053	28,125	9,688	39,292	40,341
Ventura	59,666	51,382	44,951	46,404	51,410	51,385	62,054	64,568	71,851
Yolo	40,769	26,117	34,327	35,299	32,115	29,702	31,406	46,314	24,200
Yuba	30,460	24,952	24,577	27,208	26,346	29,038	17,232	31,047	31,284

Source: Census 2000 SF3

Appendix Table 5: County Per Capita Income (in Dollars), by Race

	<i>TOTAL</i>	Some Other Race	Latino	Two or More Races	American Indian	Pacific Islander	Black	Asian	White, not Latino
Alameda	26,680	14,312	15,280	17,553	20,525	16,584	19,195	24,335	36,792
Alpine	24,431	7,507	42,209	10,361	9,015	20,000	--	36,900	27,333
Amador	22,412	16,948	15,972	11,733	20,835	25,559	22,924	58,692	22,986
Butte	17,517	10,048	10,389	11,746	13,137	15,993	14,114	8,422	19,163
Calaveras	21,420	13,663	18,376	11,528	12,227	--	22,662	25,040	22,094
Colusa	14,730	8,648	8,837	8,516	8,573	4,995	7,907	13,689	20,929
Contra Costa	30,615	14,277	15,821	16,609	23,422	19,330	20,472	26,674	38,372
Del Norte	14,573	10,598	8,516	7,230	9,638	16,647	11,595	7,624	16,956
El Dorado	25,560	12,715	14,296	18,378	18,133	21,645	30,938	30,460	26,818
Fresno	15,495	8,684	9,533	10,616	11,238	19,634	11,843	11,524	23,653
Glenn	14,069	8,873	7,916	11,148	8,391	50,000	14,782	7,629	17,404
Humboldt	17,203	11,168	12,731	10,557	11,532	10,911	10,031	12,074	18,429
Imperial	13,239	9,477	9,927	11,596	10,700	10,128	16,198	24,655	23,497
Inyo	19,639	9,279	9,327	11,732	10,464	15,800	17,812	23,155	22,615
Kern	15,760	9,192	9,393	10,978	12,813	14,320	12,857	16,608	21,066
Kings	15,848	11,177	10,926	9,260	14,130	10,271	17,009	14,477	21,118
Lake	16,825	8,322	10,493	10,613	9,962	13,862	15,258	17,779	18,108
Lassen	14,749	9,920	10,076	13,844	9,132	7,655	8,342	17,192	16,737
Los Angeles	20,683	9,972	11,100	14,782	14,629	13,344	17,341	20,595	35,785
Madera	14,682	7,641	8,806	13,113	10,839	5,115	10,999	24,435	20,239
Marin	44,962	12,775	15,776	21,408	31,785	26,560	15,442	37,371	51,395
Mariposa	18,190	7,777	13,172	9,810	10,608	10,600	17,906	12,688	19,311
Mendocino	19,443	10,881	10,280	11,993	9,511	11,866	15,836	21,621	22,205
Merced	14,257	9,147	9,627	11,393	14,675	14,309	12,592	9,899	20,287
Modoc	17,285	7,078	6,830	10,316	6,369	--	10,228	8,291	19,613
Mono	23,422	11,780	10,156	14,485	12,176	--	33,333	36,272	26,674
Monterey	20,165	10,250	10,524	13,551	15,285	15,253	17,096	19,634	32,012
Napa	26,395	11,585	12,235	14,593	15,854	19,709	14,431	27,414	31,861
Nevada	24,007	14,508	15,824	16,880	14,639	8,013	34,150	28,721	24,718
Orange	25,826	10,730	12,122	16,535	17,692	16,373	22,322	21,137	35,739
Placer	27,963	14,288	17,366	17,993	25,368	14,103	29,065	26,402	29,502
Plumas	19,391	11,710	9,787	16,511	10,449	12,857	4,138	15,187	20,378
Riverside	18,689	10,328	10,717	11,460	14,601	17,415	15,301	18,589	24,999
Sacramento	21,142	12,610	13,533	12,757	16,175	13,768	15,486	17,333	25,596
San Benito	20,932	12,483	13,162	14,667	14,547	12,007	29,233	27,272	28,672
San Bernardino	16,856	10,873	11,395	11,468	14,463	12,580	14,822	19,557	22,033
San Diego	22,926	10,445	11,738	13,083	16,144	17,080	16,770	19,039	30,150
San Francisco	34,536	15,730	18,584	22,091	22,588	12,476	19,275	22,357	51,986
San Joaquin	17,365	10,046	10,655	11,430	14,160	20,236	14,096	13,506	23,351
San Luis Obispo	21,864	11,099	12,798	14,695	19,604	19,315	17,646	16,552	24,258
San Mateo	36,045	14,669	16,351	21,037	24,528	16,470	26,079	30,119	49,157
Santa Barbara	23,059	10,041	11,334	13,938	13,063	19,145	18,813	18,441	30,898
Santa Clara	32,795	14,278	15,730	18,973	18,562	21,014	26,612	29,926	45,055
Santa Cruz	26,396	10,278	11,829	16,572	16,317	15,763	20,573	26,472	32,831
Shasta	17,738	11,256	10,863	11,059	11,827	15,891	14,237	13,487	18,650
Sierra	18,815	19,406	11,042	17,970	12,101	--	--	13,636	19,585
Siskiyou	17,570	9,081	10,922	9,875	8,305	28,928	10,557	13,923	18,860
Solano	21,731	13,154	13,768	13,194	18,196	17,089	19,234	20,543	26,463
Sonoma	25,724	12,736	13,295	15,094	17,493	19,283	18,580	21,533	29,264
Stanislaus	16,913	9,712	10,225	12,163	14,695	9,656	14,784	15,658	21,029
Sutter	17,428	8,263	9,298	10,131	22,563	15,004	18,434	14,013	21,269
Tehama	15,793	7,494	7,928	10,146	10,233	13,232	11,519	21,792	17,616
Trinity	16,868	9,042	13,669	10,997	8,941	7,086	36,604	20,016	17,662
Tulare	14,006	8,138	8,528	11,563	12,530	9,904	10,509	11,418	20,863
Tuolumne	21,015	21,839	16,527	11,262	13,377	17,376	21,890	27,335	21,764
Ventura	24,600	11,288	12,424	14,816	17,280	18,766	21,934	26,188	32,074
Yolo	19,365	11,113	11,600	11,371	15,004	11,064	13,788	13,837	24,526
Yuba	14,124	10,066	9,407	9,032	11,749	5,296	11,454	8,485	16,419

Source: Census 2000 SF3