

# CODE OF CONDUCT FOR THE OPERATION OF COMMERCIAL ADVENTURE VESSELS ON SYDNEY HARBOUR

## 1. PURPOSE

The purpose of this Code of Conduct is to facilitate the safe operation of Commercial Adventure Vessels on Sydney Harbour by prescribing;

- (a) Approved areas of operation;
- (b) 'Distance off' requirements; and
- (c) Speed and wash restrictions.

## 2. DEFINITIONS

Ahead	In relation to the 'Distance off' requirement, ahead means forward of abeam.
Approved Vessel	A Commercial Adventure Vessel (CAV) subject to a valid Certificate of Survey issued by the Waterways Authority which authorises the operation of the vessel as a CAV.
Approved Area of Operation	The area of operation designated in the Certificate of Survey issued by the Waterways Authority for the vessel in which the CAV may be used.
Irregular Manoeuvres	The operation of CAV in high-speed manoeuvres including 180/360 degree turns, power stops, zig zags etc.
Commercial Adventure Vessels (CAV)	Commercial Vessels that rely on the speed or manoeuvres of the vessel as the principal means of entertaining passengers.

## 3. BACKGROUND

Due to the increased number of commercial vessel operators on Sydney Harbour, including those involved in niche market activities such as thrill rides, it has become necessary, for safety reasons, for the Authority to restrict the areas in which such vessels may be operated and to apply special conditions to the conduct of certain commercial operations.

The Authority is mindful of the fact that Sydney Harbour is used for a number of non-commercial purposes including vessel mooring,

cruising, sailing and racing and is of the view that it is important that the commercial operators do not unreasonably restrict the ability of other users to use the Harbour.

#### **4. OPERATION OF COMMERCIAL ADVENTURE VESSELS**

A CAV may only be operated on Sydney Harbour when it;

- (a) has the status of an Approved Vessel; and
- (b) is being operated in full compliance with the conditions specified in its Certificate of Survey issued by the Authority in relation to the vessel, including crewing requirements, speed restrictions and area of operation.

#### **5. APPROVED AREA OF OPERATIONS**

- a. The Waterways Authority will designate the approved area of operation for CAV in the Certificate of Survey issued for the vessel after taking into consideration local traffic conditions, conflicting user issues, proximity of residential areas and any environmental issues.
- b. Notwithstanding the area of operation specified the operator of a CAV must only use it to conduct an irregular manoeuvre if the vessel is within a designated area listed in Schedule A to this Code.
- c. The operator of a CAV must ensure that it is not used to conduct an irregular manoeuvre within 500 metres of another Approved Vessel.

#### **6. DISTANCE OFF**

The operator of a CAV must ensure that the 'Distance Off' requirements specified in Schedule B to this Code are maintained as a minimum when the vessel is being used to conduct an irregular manoeuvre including;

- a. 200 meters from a person in the water;
- b. 200 meters forward of any other vessel;
- c. 100 metres from any fixed object; and
- d. 60 metres abeam and astern of any fixed object or other vessel underway.

## **7. SPEED / WASH / SIGN RESTRICTIONS**

The operator of a CAV must adhere to all speed restrictions and comply with all 'No Wash' and other signage requirements whilst operating on Sydney Harbour.

## **8. RESPONSIBILITIES**

The operator of a CAV must be aware that nothing in this Code shall exonerate the owner, agent, master or crew of any vessel from the consequences of any neglect to comply with the requirements of The Navigation (Collision) Regulations – NSW, The Water Traffic Regulations – NSW, or any other legislative provision contained in the NSW Marine Legislation.

## **9. COMPLIANCE WITH THIS CODE**

- a. Compliance with this Code will promote adherence to the Legislative requirements for the maintenance of safety and good seamanship and will also promote the equitable use of Sydney Harbour for navigational pursuits. Any failure to comply with this Code is likely to involve breaches of Marine Legislation.
- b. As the Code is introduced with the commitment of all users compliance with it will also be a condition of the Certificate of Survey issued by the Authority in relation to a CAV.

## **10. AMENDMENTS**

Any suggested amendments or variations to this Code should be submitted to the Sydney Regional Manager of the Waterways Authority in the first instance. They will be adopted if deemed appropriate after consultation with the users.

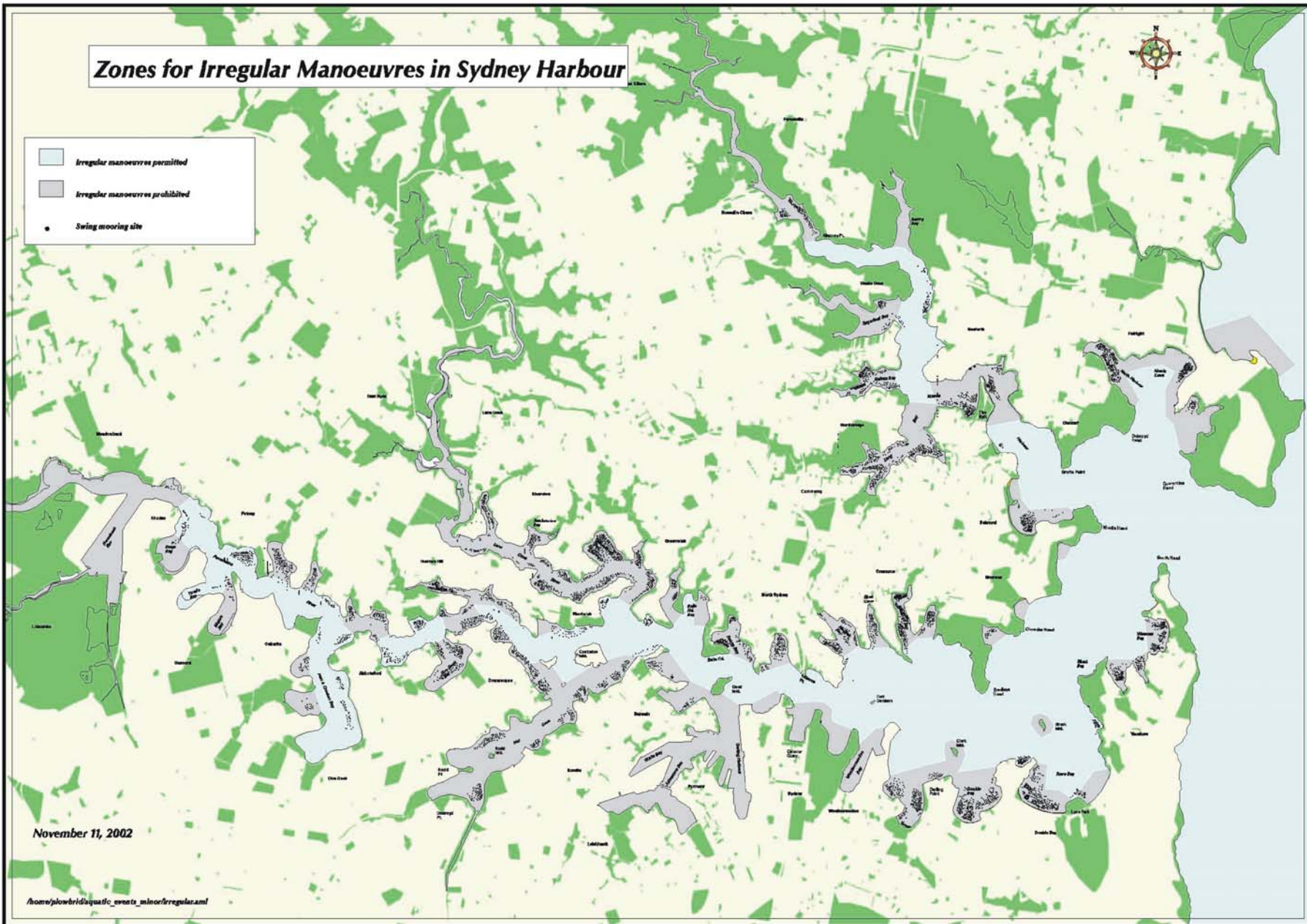
***Original Signed by M Taylor  
11 December 2003***

**MATTHEW TAYLOR  
CHIEF EXECUTIVE  
WATERWAYS AUTHORITY**

Dated at Sydney this            day of December 2003

### Zones for Irregular Manoeuvres in Sydney Harbour

-  Irregular manoeuvres permitted
-  Irregular manoeuvres prohibited
-  Swing mooring site



November 11, 2002

[/home/plowbirds/aquatic\\_events\\_minor/irregular.html](#)

SCHEDULE B

**ZONE FOR IRREGULAR MANOEUVRES**

