

POPULATION AND EMPLOYMENT PROFILE OF MUMBAI METROPOLITAN REGION

CONTENTS

	Preface	
	Population and Employment in MMR : Observations and Trends	
Table No.	Title	Page no
	Population	
1	Population Growth of MMR during 1971-2001	1
2	Spatial Growth Profile of Greater Mumbai	3
3	Slum Population in Municipal Urban Area of MMR (2001)	5
4	Population Growth of Greater Mumbai , MMR, Maharashtra and India	7
5	Comparative Growth of Four Major Urban Agglomerations in India	7
6	Population Growth of Greater Mumbai over the Last Century	9
7	Composition of Population of Greater Mumbai	11
8	Distribution of Sex-ratio of Population in Wards of Greater Mumbai	13
9	Literate Population of Greater Mumbai	15
10	Population and Resident Workers in Urban MMR -2001	17
	Employment	
11	Employment in MMR (1998)	19
12	Growth of Population, Resident Workers and Employment in Greater Mumbai	21
13	Number of Establishments and Employment in Gr. Mumbai According to NIC Divisions	23
14	Ward-wise Distribution of Establishments and Employment for office sector in Greater Mumbai over 1980-1998 Period	25
15	Distribution of Establishments by Employment Size-Class in MMR (1998)	29
16	Size-wise Office Sector Employment in Greater Mumbai (1998)	31
17	Change in Office Sector Employment in Greater Mumbai 1990-1998	33
18	Employment in Agriculture Establishments in MMR (1998)	35
19	Employment and Establishments by Nature of Operation in MMR (1998)	37
20	Employment and Establishments with Premises Status in MMR (1998)	39
21	Employment and Establishments by Type of Power Fuel Used in MMR (1998)	41
22	Employment and Establishments by Type of Ownership in MMR (1998)	43
23	Employment and Establishments by Number of Years of Operation in MMR (1998)	45
24	Employment and Establishments by Social Groups in MMR (1998)	47
25	Ward-wise Population, Establishments and Employment of Greater Mumbai	49
26	Rural Total Workers in Thane District in MMR (1998)	51
27	Rural Hired Workers in Thane District in MMR (1998)	51
28	Rural Total Workers in Raigad District in MMR (1998)	53
29	Rural Hired Workers in Raigad District in MMR (1998)	53
30	Distribution of Total Workers in Greater Mumbai, Thane, Raigad (1998)	55
31	Distribution of Hired Workers in Greater Mumbai, Thane, Raigad (1998)	55
32	Sectorwise Net District Domestic Product at Constant (1993-94) Prices for MMR	57

PREFACE

Population and employment by place-of-work are the two key parameters necessary for planning of infrastructure and other activities. The Mumbai Metropolitan Region as defined by the Mumbai Metropolitan Region Development Authority Act 1974, covers full Districts of Mumbai City and Mumbai Suburbs and part of the Districts of Thane and Raigad. It is a highly urbanised area with 13 Municipal Councils, 7 Municipal Corporations and a few non-municipal towns. In addition, there are more than 900 villages in this region. Considerable changes in the growth and distribution of population and employment are observed in the Region over the last couple of decades.

In this publication an attempt is made to present population and employment in various administrative units of the Mumbai Metropolitan Region. Provisional figures released by Census 2001 and data obtained from Economic Census 1998 are the main sources. Data have been compiled in various tables to reflect the status. A comparison with available data for previous years is made wherever found useful. Observations to highlight the tabulated information are given at suitable places. The population data, in particular, would be revised once the final figures are available for Census 2001.

Suggestions are solicited to improve and expand this publication to serve the wider community.

September 1, 2003
Mumbai

S.P. Pendharkar
Chief, Planning Division

Population and Employment in MMR :

Observations and Trends

Introduction

Development of the hinterland surrounding Greater Mumbai was considered necessary by the Government of Maharashtra, in the light of the rapid growth of population observed in 1960s. With this view, delineation of Mumbai Metropolitan Region (MMR), which includes area of Navi Mumbai across Thane Creek and undertaking preparation of the Regional Plan 1970-91, were the actions taken in early 1970s. Following the sanctioning of the Regional Plan for MMR in 1973, the Mumbai Metropolitan Region Development Authority (MMRDA) was established to co-ordinate and implement the development of the MMR in accordance with the Regional Plan. In 1971, City and Industrial Development Corporation (CIDCO), was established to plan and develop Navi Mumbai with target population of 2 million. Decentralisation of economic activities and population by developing other parts of the Mumbai Metropolitan Region were the main planks of that strategy. On this background it would be useful to study the trends in population and employment as per the data available from the General Census 2001 and Economic Census 1998 that are tabulated in the following pages.

Population Growth in MMR

It is seen from Table-1 that, population of MMR has increased from 77.92 lakhs in 1971 to 188.90 lakhs in the year 2001. However the annual compound growth rate for population in MMR has declined from 3.59% during 1971-81 to 2.66% in 1991-2001. It is further seen that MMR is a highly urbanised area where growth in urban population is around 3% during 1971-2001 period, whereas rural population has remained stagnant. Rural population decline is also accounted by incorporation of several villages in the surrounding respective Municipal Corporation or Municipal Council area in the last three decades.

It may be observed from Table-1 that though there is a continuous growth of population of Greater Mumbai in absolute number, the annual compound growth rate has drastically reduced from that of 3.28% during 1971-81 to 1.84% in 1991-2001. On the other hand Municipal Corporations of Thane, Kalyan-Dombivali, Bhiwandi-Nizampur, Mira-Bhayandar and Navi Mumbai have registered substantial growth in their population, particularly during 1981-2001 period. The share of Greater Mumbai's population in that of MMR, which was 76.63% in the year 1971 is found reduced to 63.06% in 2001. This indicates that the growth of population in outer MMR has taken place at faster pace than that in Greater Mumbai.

Population Distribution within Greater Mumbai

Within Greater Mumbai a distinct change in the spatial distribution of population is observed in the last quarter of the 20th century (Table-6). Over 1901-1971 period, the population in island-city is found steadily increasing and was always more than that in the suburbs in that period. However, during the last three decades population growth in island city is found negligible, whereas, that in the suburbs is increasing at fairly high rate. In the suburbs it is observed that the western suburbs (wards H, K, P & R) have more population than that residing in eastern suburbs (wards L, M, N, S & T). Gross density of Greater Mumbai is naturally increasing and is found to be 27,715 persons per sq. km. in 2001 (Table-2). The highest density of 107,723 is found in 'C' ward.

It is seen from Table-7 that there has been a gradual improvement in the sex ratio over 1901 to 2001 period in Greater Mumbai. That is an indication of the increasing female migration along with the male migration over the years. However Greater Mumbai fares badly in the sex ratio when compared to that of India all through the last century. It is heartening to note that literacy rate for both male and female is increasing in Greater Mumbai since 1981. The proportion of the literate population in the total population, which was 68.16% in 1981 has increased to 77.45% in 2001 (Table-9). Availability of educational facilities and realisation of the importance of education by the people in Greater Mumbai may be the reasons.

Slum Population

Proliferation of slums is a bane of urbanisation. The MMR, which is a highly urbanised region, is not free from it. This is brought out in Table-3. It is seen that approximately half of the population of Greater Mumbai in 2001 is found living in slums (48.88 %). Similarly one third of the population in Thane Municipal Corporation is found living in slums. More than 38% of the urban population in MMR in 2001 is found to be residing in slums. This brings out pressing need for improving the affordable housing stock supply in most of the urban settlements of MMR.

Resident Workers and Employment

Census gives information about the resident workers classified as main and marginal workers. In Table-10 distribution of resident workers in urban MMR in 2001 is presented. It is seen that out of total population of 178.46 lakhs in urban MMR, the total resident workers were 66.16 lakhs in the year 2001 i.e. 37.07%. In case of Greater Mumbai, share of total resident worker in its total population, which was 36.81% in the year 1971 has varied over the years namely, to 34.69% in 1981, 34.59% in 1991 and 38.00% in 2001.

Employment is one important indicator of the economic growth. For this purpose data from Economic Census is found relevant. Economic census gives the status of employment in a town or village because data on employees are collected at the workplace unlike the general census, which collects data at the residence. Overall picture of employment in MMR in 1998 when the last Economic Census was conducted is given in Table-11. The total employment in MMR has increased from 28.08 lakh in 1980 to 32.22 lakh in 1990 and to 35.54 lakh in 1998. It is thus seen that the employment has registered a modest growth rate of 1.23% during 1980-90 period and 1.38% during 1990-98 period. The total employment in Greater Mumbai is found increasing marginally since 1980. This can be seen from the fact that employment in Greater Mumbai, which was 15.28 lakh in 1971, increased to 21.99 lakh in 1980, 24.26 lakh in 1990 and 26.26 lakh in 1998. The compound growth rate of employment was 3.71 % during 1971-80, which has remained constant at about 1% during both 1980-90 and 1990-1998 period (Table-12). It is seen from Table-13 that there is a substantial increase in number of establishments as well as employment in finance, banking and personal service sector in Greater Mumbai over 1980-1998 period. However increase in total number of establishments during 1990-98 period is found marginal.

Employment in Wholesale Trade

It may be noted that there has been a decline both in number of establishments and employment in wholesale trade sector over the 1990-98 period. This is seen from the fact that number of establishments in the wholesale trade sector has reduced from 26,986 in 1990 to

24,639 in 1998 and employment from 1,51,219 to 1,18,925 during this period. This may partly be on account of implementing the policy of shifting of some of the wholesale trade activities from Mumbai to Navi Mumbai. The retail trade sector however shows the growth in number of establishments and employment during 1990-98 period. The number of establishments in retail trade sector has increased from 1,71,017 to 2,28,545 and employment has increased from 4,39,032 to 4,98,819 over the 1990-98 period.

Office Sector Employment

Employment in office sector in Greater Mumbai with its distribution across the wards for 1980-98 period is given in Table-14. It is noted that share of office sector employment in its Central Business District (wards A, B, C, and D) has decreased from 54% to 47% in the total office sector employment during 1980-98 period. The employment in the rest of island-city has substantially increased in absolute number namely from 70,435 in 1980 to 2,03,583 in 1998. Distribution of establishments by size class of employment in MMR in 1998 shows that in Greater Mumbai employment in large establishments (employing more than 50 persons), constitutes 41% of its total employment. In MMR the employment is found equally divided in establishments employing less than 20 persons and the rest of the categories (Table-15). Average of 20 employees per office is observed in Greater Mumbai in 1998 (Table-16). It may be noted that there are 180 offices in Greater Mumbai in 1998 employing more than 500 employees per office. These offices are confined largely to banking and allied activities (NIC code 80 & 81) and public administration and defence services (NIC code 90). Employment in the offices of professional and labour organisation (NIC code 94), recreational and cultural services (NIC code 95), international and extra territorial bodies (NIC code 99) has declined but there is a steady growth in rest of the office sectors over the period 1990-98 (Table 17).

Nature of Employment in MMR

It is observed that in 1998 more than 97% of the total establishments in MMR are perennial in nature and 86 % of the total operate from premises (Table 19 & 20). Further, 75 % of the establishments operate without power, while 15 % use electricity (Table 21). Out of the total establishments in MMR, 97 % are in private sector employing 71% of the total employment. About 2% establishments are in Government sector, employing 26% of the total employment. On an average a private sector establishment employs 4 persons, while Government sector establishment employs 64 persons (Table 22). It is found that 58% of the total establishments in MMR are in operation for more than 6 years (Table 23). It is observed that the employment in Raigad district in MMR is just about 1 lakh, whereas that in Thane District is 8.2 lakhs (Table 30). From the analysis of the data available from Census 2001 and Economic Census 1998 it is found that though the rate of growth for population in Greater Mumbai is reduced, addition of population in absolute number (about 2 million) during the decade 1991-2001 is still very substantial. Growth of population in the rest of urban MMR is also significant. Provision of infrastructure and services in Greater Mumbai and the rest of urban settlements is therefore needed on sustained basis. Growth of employment in Greater Mumbai as well as rest of MMR is not increasing at a desired pace and efforts to create more job opportunities in formal sector will have to be stepped up.

Table 1 : Population Growth of MMR during 1971 - 2001

Sr. no	Unit	1971	1981	1991	2001	Annual Comp.Gr. rate		
						1971-1981	1981-1991	1991-2001
A	Municipal Corporation							
1	Greater Mumbai	5,970,575	8,243,405	9,925,891	11,914,398	3.28	1.87	1.84
2	Thane	170,675	474,366	803,389	1,261,517	10.76	5.41	4.62
3	Kalyan-Dombivali	150,655	578,353	820,089	1,193,266	14.40	3.55	3.82
4	Navi Mumbai	+	+	318,447	703,947			8.26
5	Mira Bhayander	+	+	175,605	520,301			11.47
6	Bhiwandi-Nizampur	79,576	115,298	379,070	598,703	3.78	12.64	4.68
7	Ulhasnagar	168,462	273,668	369,077	472,943	4.97	3.04	2.51
	Sub-total (A)	6,539,943	9,685,090	12,791,568	16,665,075	4.00	2.82	2.68
B	Municipal Council							
	Thane District							
1	Ambernath	56,276		125,801	203,795			4.94
2	Kulgaon-Badlapur	+	+	52,154	97,917			6.50
3	Nallasopara	+	+	67,732	184,664			10.55
4	Vasai	30,594	34,940	39,781	49,346	1.34	1.31	2.18
5	Virar	+	+	57,600	118,945			7.52
6	Navghar Manikpur	+	+	59,324	116,700			7.00
	Sub-total (B)	86,870	34,940	402,392	771,367	-8.71	27.68	6.72
	Raigad District							
7	Alibag	11,913	14,051	16,289	19,491	1.66	1.49	1.81
8	Karjat	+	+	19,904	25,544			2.53
9	Khopoli	18,152	32,102	45,039	58,657	5.87	3.44	2.68
10	Matheran	3,397	3,920	4,708	5,139	1.44	1.85	0.88
11	Panvel	26,602	37,073	58,986	104,031	3.37	4.75	5.84
12	Pen	11,754	14,772	21,588	30,203	2.31	3.87	3.42
13	Uran	12,616	15,168	17,775	23,254	1.86	1.60	2.72
	Sub-total (C)	84,434	117,086	184,289	266,319	3.32	4.64	3.75
C	Urban MMR (A+B+C)	6,711,247	9,837,116	13,378,249	17,845,935 #	3.90	3.12	2.92
D	Rural MMR	1,080,341	1,254,676	1,156,115	1,047,124 \$	1.51	-0.81	-0.99
E	Grand Total	7,791,588	11,091,792	14,534,364	18,893,059 \$	3.59	2.74	2.66

Includes population of non-municipal Census towns of Sandor, Khoni, Kopharad, Gokhiware, Waliv, Kon, # Kegaon, Taloje Panchnand, Kalundre, Ambivali Tarf Wankhal, Mohpada alias Wasambe, Nera

\$ Estimated

+ Included in Rural MMR

Table 2 : Spatial Growth Profile of Greater Mumbai

Wards	Area (Sq.Kms.)	Population ('000)				Gross Density (Persons /Sq.km)			
		1971	1981	1991	2001	1971	1981	1991	2001
A	10.46	184.10	168.22	194.84	207.51	17,600	16,082	18,627	19,838
B	2.44	175.13	147.31	117.73	140.48	71,775	60,373	48,250	57,574
C	1.77	312.47	270.70	197.22	190.67	176,537	152,938	111,424	107,723
D	6.62	382.74	384.04	344.88	378.61	57,816	58,012	52,097	57,192
E	7.38	528.74	517.07	467.50	439.39	71,645	70,064	63,347	59,538
F	21.15	662.52	814.70	847.83	922.47	31,325	38,520	40,087	43,616
G	17.85	824.68	983.00	1004.91	1047.71	46,201	55,070	56,297	58,695
Mumbai Island	67.67	3070.38	3285.04	3174.91	3326.84	45,373	48,545	46,918	49,163
H	19.56	523.63	706.84	798.74	915.17	26,770	36,137	40,835	46,788
K	47.23	573.69	925.68	1242.68	1500.51	12,147	19,599	26,311	31,770
P	63.67	372.34	663.73	928.69	1226.56	5,848	10,425	14,586	19,264
R	76.64	235.83	561.92	977.88	1453.44	3,077	7,332	12,759	18,965
Western Suburbs	207.10	1705.49	2858.17	3947.99	5095.68	8,235	13,801	19,063	24,605
L	13.30	273.51	434.02	616.6	774.81	20,565	32,633	46,361	58,256
M	54.28	316.37	565.77	822.91	1080.85	5,828	10,423	15,160	19,912
N	53.09	347.49	599.42	686.76	614.95	6,545	11,291	12,936	11,583
S	15.97	132.17	278.46	373.50	691.11	8,276	17,436	23,388	43,276
T	34.45	125.17	222.55	303.26	330.17	3,633	6,460	8,803	9,584
Eastern Suburbs	171.09	1194.71	2100.22	2803.03	3491.89	6,983	12,276	16,383	20,410
Greater Mumbai	445.86	5970.58	8243.43	9925.93	11914.41	13,391	18,489	22,262	26,722

Observations :

- (1) Population of the Island part of Greater Mumbai is relatively stabilised
- (2) Gross density of the Western and Eastern Suburbs has registered three fold increase over 1971-2001 period
- (3) Gross density of Greater Mumbai has doubled over 1971-2001 period.

Table 3 : Slum Population in Municipal Urban Area of MMR (2001)

(Population in '000)

Sr. No	Urban Area (Mun.Corpns/Councils)	Slum Population	Total Population	Percentage of slum population
1	Greater Mumbai	5823.51	11914.40	48.88
2	Thane	420.27	1261.52	33.31
3	Kalyan-Dombivali	34.85	1193.27	2.92
4	Navi Mumbai	138.62	703.95	19.69
5	Bhiwandi	111.30	598.70	18.59
6	Mira Bhayander	37.24	520.30	7.16
7	Ulhasnagar	53.72	472.94	11.36
8	Ambarnath	64.19	203.80	31.50
9	Nallasopara	3.17	184.66	1.72
10	Virar	18.1	118.95	15.22
11	Navghar Manikpur	NA	116.70	
12	Panvel	7.54	104.03	7.25
13	Kulgaon-Badlapur	7.67	97.92	7.83
14	Khopoli	NA	58.66	
15	Vasai	NA	49.34	
16	Pen	NA	30.20	
17	Karjat	NA	25.54	
18	Uran	NA	23.25	
19	Alibag	NA	19.49	
20	Matheran	NA	5.14	
	Total	6720.18	17702.76	37.96

Observations :

- (1) About half of the population in Greater Mumbai lives in slums
- (2) One third of the population in Thane Municipal Corporation area is living in slums
- (3) Among the Municipal Councils , more than 30% of population of Ambarnath Municipal Council lives in slums .
- (4) More than one third population of Urban MMR lives in slums.

Table 4: Population Growth of Greater Mumbai, MMR, Maharashtra and India

(Population in lakhs)

Unit	1971	1981	1991	2001
Greater Mumbai	59.71	82.43	99.26	119.14
MMR	77.78	110.78	145.34	188.93
Maharashtra	504.12	627.15	789.21	967.52
Urban India	1091.13	1594.63	2175.52	2853.55
India	5481.60	6851.85	8443.24	10270.15

Observations :

(1) Share of population of Greater Mumbai in that of MMR is reduced from 77 % in 1971 to 63% in 2001.

(2) Share of population of MMR in Maharashtra is increased from 15 % in 1971 to 20% in 2001

(3) Share of population of MMR in urban India has remained 7% over 1971-2001 period.

Table 5: Comparative Growth of Four Major Urban Agglomerations in India

(Population in lakhs)

Urban Agglomerations	1971	1981	1991	2001
Gr.Mumbai *	65.92	94.22	125.72	163.68
Delhi	36.47	57.29	83.75	127.91
Kolkatta	74.20	91.94	109.10	132.17
Chennai	31.70	42.89	53.61	64.24

* Covers Municipal Corporations of Greater Mumbai, Thane , Kalyan-Dombivali, Navi Mumbai, Bhiwandi, Mira-Bhayander and Ulhas Nagar

Observation :

Greater Mumbai Urban Agglomeration is the largest in terms of population among four major Urban Agglomerations in India since 1981

Table 6: Population Growth of Greater Mumbai over the Last Century

(Population in lakhs)

Year	Island Population	Comp. Grwth rate	Suburbs population	Comp. Growth rate	Total population	Comp. Growth rate
1901	7.76		1.52		9.28	
1911	9.79	2.36%	1.69	1.09%	11.49	2.16%
1921	11.76	1.84%	2.05	1.91%	13.80	1.85%
1931	11.61	-0.12%	2.36	1.46%	13.98	0.13%
1941	14.90	2.52%	3.11	2.79%	18.01	2.57%
1951	23.29	4.57%	6.65	7.89%	29.94	5.21%
1961	27.72	1.76%	13.80	7.57%	41.52	3.32%
1971	30.70	1.03%	29.00	7.71%	59.71	3.70%
1981	32.85	0.68%	49.58	5.51%	82.43	3.28%
1991	31.75	-0.34%	67.51	3.13%	99.26	1.87%
2001	33.27	0.47%	85.88	2.44%	119.14	1.84%

Greater Mumbai Population (1901-2001)

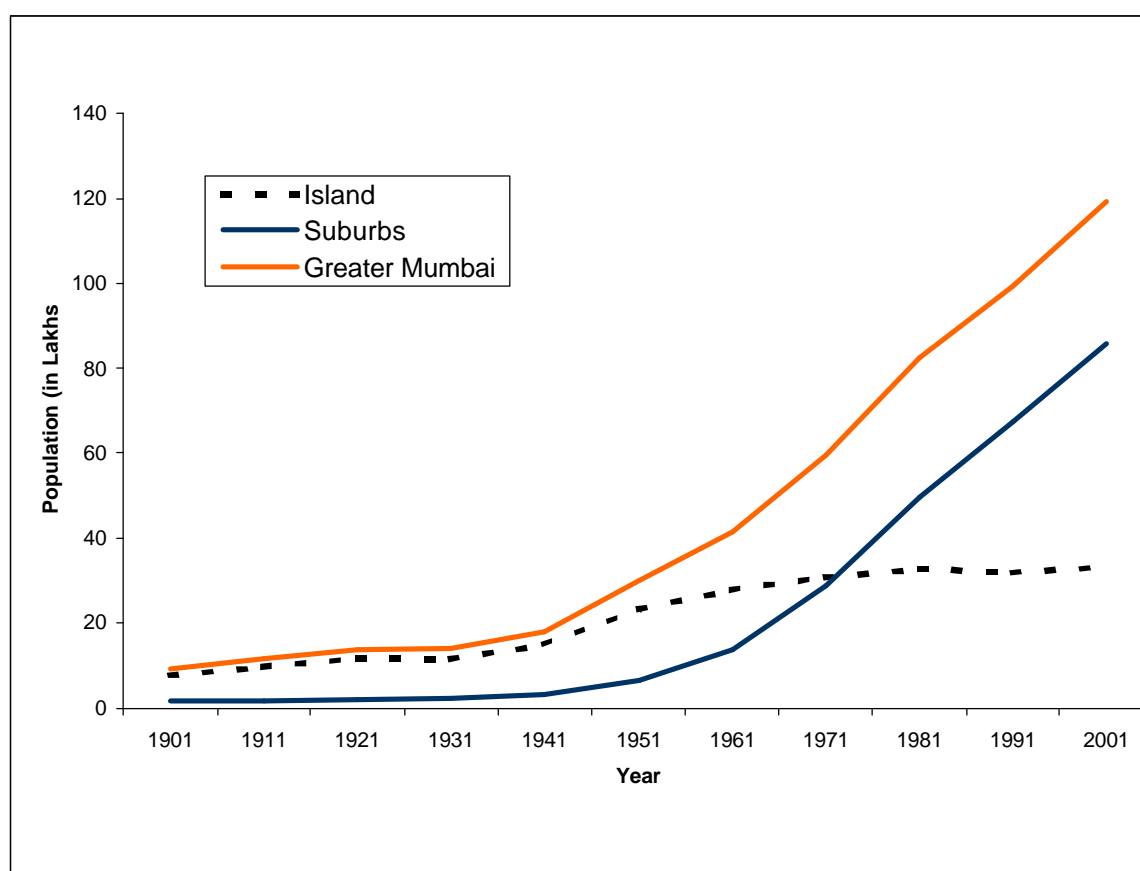


Table 7 : Composition of Population of Greater Mumbai

Year	Males	Females	Total	Sex Ratio (females/ '000 males) Gr. Mumbai	Sex Ratio (females/ '000 males) India
1901	561,825	366,169	927,994	652	972
1911	731,634	417,123	1,148,757	570	964
1921	884,301	496,147	1,380,448	561	955
1931	878,102	519,710	1,397,812	592	950
1941	1,114,983	686,373	1,801,356	616	945
1951	1,868,335	1,125,109	2,993,444	602	946
1961	2,496,176	1,655,880	4,152,056	663	941
1971	3,478,378	2,492,197	5,970,575	716	930
1981	4,652,646	3,590,759	8,243,405	772	934
1991	5,460,145	4,465,746	9,925,891	818	927
2001	6,577,902	5,336,496	11,914,398	811	933

Observations :

- (1) There has been a gradual improvement in Sex ratio for Greater Mumbai.
- (2) The sex ratio of Greater Mumbai has remained inferior to that of India throughout the last century.

Table 8 : Distribution of Sex-ratio of Population in Wards of Greater Mumbai

Ward	Name	1981	1991	2001
A	Colaba	721	761	756
B	Sandhurst Rd	723	813	736
C	Marine Lines	659	732	579
D	Grant Road	810	866	866
E	Byculla	681	776	733
F/S	Parel	720	769	839
F/N	Matunga	800	819	789
G/N	Dadar/Plaza	795	822	791
G/S	Elphinstone	663	734	762
Island		729	791	774
H/W	Bandra	920	912	895
H/E	Khar- Santacruz	797	817	800
K/W	Andheri-W	845	872	863
K/E	Andheri-E	779	832	839
P/S	Goregaon	785	815	792
P/N	Malad	812	818	824
R/S	Kandivli	794	783	761
R/N	Borivali	807	859	859
L	Kurla	733	767	758
M/E	Chembur-E	831	812	802
M/W	Chembur-W	784	840	841
N	Ghatkopar	812	849	851
S	Bhandup	740	813	823
T	Mulund	853	888	893
Suburbs		801	831	826
Gr. Mumbai		772	818	811

Observations:

- (1) The sex ratio of Greater Mumbai declined from the figure of 818 females to 1000 males in 1991 to the corresponding figure of 811 females in 2001
- (2) The sex-ratio of the Suburbs is greater than Island city over 1981-2001 period

Table 9 : Literate Population of Greater Mumbai

Year	Population			Literate Population			Literacy Rate		
	Males	Females	Total	Males	Females	Total	Males	Females	Total
1	2	3	4	5	6	7	(8)=(5)/(2)	(9)=(6)/(3)	(10)=(7)/(4)
1981	4,652,646	3,590,759	8,245,386	3,438,771	2,181,386	5,620,157	73.91	60.75	68.16
1991	5,460,095	4,465,746	9,927,832	4,183,991	2,890,937	7,074,928	76.63	64.74	71.26
2001	6,577,902	5,336,496	11,916,399	5,412,674	3,816,053	9,228,727	82.29	71.51	77.45

Observations :

- (1) Total literacy rate of Greater Mumbai has gradually increased between 1981-2001
- (2) As compared to literacy rate of 67% of Maharashtra in 2001 the literacy rate for Greater Mumbai is 77 %
- (3) Male and female literacy rate has gradually increased during 1981-2001 in Greater Mumbai

Table 10 : Population and Resident Workers in Urban MMR - 2001

Sr. No.	Unit	Total Population	Main Workers	Marginal Workers	Total Workers
A	Municipal Corporation				
1	Greater Mumbai	11,914,398	4,272,902	255,024	4,527,926
2	Thane	1,261,517	393,413	25,891	419,304
3	Ulhasnagar	472,943	145,721	9,447	155,168
4	Kalyan-Dombivali	1,193,266	381,702	21,735	403,437
5	Mira-Bhayander	520,301	185,979	7,101	193,080
6	Bhiwandi-Nizampur	598,703	243,073	6,990	250,063
7	Navi Mumbai	703,947	238,259	17,196	255,455
	Sub-Total (A)	16,665,075	5,861,049	343,384	6,204,433
B	Municipal Council Thane District				
8	Ambernath	203,795	59,605	6,934	66,539
9	Kulgaon-Badlapur	97,917	32,129	1,860	33,989
10	Nallasopara	184,664	60,416	3,637	64,053
11	Vasai	49,346	15,494	1,264	16,758
12	Virar	118,945	40,352	3,369	43,721
13	Navghar Manikpur	116,700	41,364	1,163	42,527
	Sub-Total (B)	771,367	249,360	18,227	267,587
	Raigad district				
14	Alibag	19,491	6,640	679	7,319
15	Karjat	25,544	7,230	1,113	8,343
16	Khopoli	58,657	16,156	2,462	18,618
17	Matheran	5,139	2,050	297	2,347
18	Panvel	104,031	34,112	2,182	36,294
19	Pen	30,203	9,349	778	10,127
20	Uran	23,254	6,771	1,102	7,873
	Sub-Total (C)	266,319	82,308	8,613	90,921
C	Census Town Thane District				
21	Sandor	8,336	2,710	762	3,472
22	Khoni	22,687	10,246	184	10,430
23	Kopharad	5,267	2,203	187	2,390
24	Gokhiware	19,772	7,082	522	7,604
25	Waliv	15,312	5,806	597	6,403
26	Kon	15,167	4,175	659	4,834
	Sub-Total (D)	86,541	32,222	2,911	35,133
	Raigad District				
27	Kegaon	7,924	1,967	310	2,277
28	Taloje Panchnand	10,858	3,199	528	3,727
29	Kalundre	7,581	2,076	260	2,336
30	Ambivali Taraf Wankhal	6,796	2,104	226	2,330
31	Mohpada alias Wasambe	8,735	2,776	111	2,887
32	Neral	14,739	3,950	593	4,543
	Sub-Total (E)	56,633	16,072	2,028	18,100
D	Urban MMR (A+B+C+D+E)	17,845,935	6,241,011	375,163	6,616,174

Note: Resident worker in MMR means who resides in MMR and is reported working .

Table 11 : Employment in MMR (1998)

Sr. No.	Unit	Adult male	Adult female	Child male	Child female	Total
A	Municipal Corporation					
1	Greater Mumbai	2,217,073	368,500	32,581	7,594	2,625,748
2	Thane	150,892	24,234	1,389	378	176,893
3	Ulhasnagar	64,792	4,427	297	89	69,605
4	Kalyan-Dombivali	87,960	11,706	1,184	228	101,078
5	Mira-Bhayander	56,668	6,757	2,849	556	66,830
6	Bhiwandi-Nizampur	178,987	1,441	1,369	141	181,938
7	Navi Mumbai	76,834	8,633	2,263	172	87,902
	Sub-Total (A)	2,833,206	425,698	41,932	9,158	3,309,994
B	Municipal Council					
	Thane District					
8	Ambarnath	13,246	1,699	1,151	67	16,163
9	Kulgaon-Badlapur	5,478	733	134	26	6,371
10	Nallasopara	8,822	1,527	245	57	10,651
11	Vasai	4,841	726	42	28	5,637
12	Virar	6,645	781	158	98	7,682
13	Navghar Manikpur	8,743	959	64	10	9,776
	Sub-Total (B)	47,775	6,425	1,794	286	56,280
	Raigad District					
14	Alibag	5,937	1,271	32	7	7,247
15	Karjat	2,568	355	331	31	3,285
16	Khopoli	7,582	681	5	1	8,269
17	Matheran	2,083	180	13	0	2,276
18	Panvel	29,959	3,085	151	24	33,219
19	Pen	4,796	873	39	13	5,721
20	Uran	3,601	544	83	2	4,230
	Sub-Total (C)	56,526	6,989	654	78	64,247
C	Urban MMR (A+B+C) and Census towns	2,955,856	440,552	44,742	9,631	3,450,781
D	Rural MMR	87,985	18,814	1,828	723	109,350
E	Grand Total	3,043,841	459,366	46,570	10,354	3,560,131

Source : Economic Census 1998

Table 12 : Growth of Population, Resident Workers and Employment in Greater Mumbai

Year	Population	Comp. Gr. Rate	Resident Workers	Comp. Gr. Rate	Total Employment	Comp. Gr. Rate
1971	5,970,575		2,198,098		1,528,264	
1981	8,243,405	3.28	2,902,503	2.82	2,199,381	3.71
1991	9,925,891	1.87	3,498,876	1.89	2,425,882	0.99
2001	11,914,398	1.84	4,527,926	2.61	2,625,748 *	0.99

* For the year 1998

Observations :

- (1) About one third of the population in Greater Mumbai is found working during 1971-2001
- (2) Growth of the resident workers in Greater Mumbai declined during the period 1981-1991 whereas it has increased during 1991-2001.
- (3) Employment in Greater Mumbai has stagnated during 1980-1998 period with growth rate just around 1%

Table 13: Number of Establishments and Employment in Greater Mumbai According to NIC Divisions

NIC Code	Description	1980		1990		1998	
		Est.	Emp.	Est.	Emp.	Est.	Emp.
0	Agriculture, hunting, forestry and fishing	2,881	23,119	1,982	10,491	1,240	6,877
1	Mining and quarrying	31	920	60	348	26	182
2 & 3	Manufacturing & Repair Services	71,411	791,120	73,495	690,621	59,433	468,409
4	Electricity, Gas and Water	796	14,388	566	10,997	119	7,620
5	Construction	2,772	14,028	5,656	20,082	4,677	16,001
6	Wholesale & Retail Trade and Restaurants and Hotels	139,926	545,591	212,916	705,127	278,038	747,654
7	Transport, Storage and Communication	11,708	209,883	23,414	131,472	33,038	263,493
8	Financing, Insurance, Real Estate and Business Services	11,382	138,849	19,738	248,541	27,789	352,055
9	Communication, Social and Personal Services	31,501	303,557	81,612	578,945	79,255	753,624
10	Others	11,798	157,996	3,979	29,257	1,811	9,833
	Total	284,206	2,199,451	423,418	2,425,881	485,426	2,625,748

Observations :

- 1) There is substantial decrease in the employment in manufacturing sector during the period 1980-1998 .
- 2) Growth in total number of establishments during 1990-98 period is marginal .
- 3) Employment in tertiary sector (NIC codes 8,9 & 10 together) has nearly doubled over 1980-98 period.

Table 14: Ward-wise Distribution of Establishments and Employment for Office Sector in Greater Mumbai over 1980-1998 period

Ward		Office Sector					
		1980	% of total	1990	% of total	1998	% of total
A	Est.	4,575	19.61%	8,721	20.58%	9,398	19.05%
	Emp.	126,608	35.92%	226,171	35.97%	328,391	37.73%
B	Est.	2,022	8.67%	2,602	6.14%	2,851	5.78%
	Emp.	16,425	4.66%	18,888	3.00%	23,021	2.64%
C	Est.	2,954	12.66%	2,684	6.33%	3,219	6.53%
	Emp.	20,805	5.90%	19,871	3.16%	26,593	3.06%
D	Est.	2,265	9.71%	2,612	6.16%	2,468	5.00%
	Emp.	29,050	8.24%	33,786	5.37%	36,647	4.21%
C.B.D.	Est.	11,816	50.66%	16,619	39.22%	17,936	36.36%
	Emp.	192,888	54.72%	298,716	47.50%	414,652	47.64%
E	Est.	1,075	4.61%	2,026	4.78%	1,738	3.52%
	Emp.	14,494	4.11%	27,523	4.38%	48,635	5.59%
F	Est.	1,353	5.80%	2,710	6.39%	3,125	6.34%
	Emp.	20,947	5.94%	51,387	8.17%	79,742	9.16%
G	Est.	1,822	7.81%	3,672	8.66%	4,111	8.33%
	Emp.	34,994	9.93%	57,113	9.08%	75,206	8.64%
Rest of Island	Est.	4,250	18.22%	8,408	19.84%	8,974	18.19%
	Emp.	70,435	19.98%	136,023	21.63%	203,583	23.39%
H	Est.	1,077	4.62%	2,303	5.43%	2,181	4.42%
	Emp.	16,397	4.65%	32,132	5.11%	46,738	5.37%
K	Est.	1,266	5.43%	3,434	8.10%	5,679	11.51%
	Emp.	19,328	5.48%	41,668	6.63%	61,200	7.03%
L	Est.	656	2.81%	1,417	3.34%	1,563	3.17%
	Emp.	5,080	1.44%	12,131	1.93%	15,645	1.80%
M	Est.	705	3.02%	2,342	5.53%	1,904	3.86%
	Emp.	8,750	2.48%	25,981	4.13%	27,507	3.16%
N	Est.	766	3.28%	1,685	3.98%	1,905	3.86%
	Emp.	9,067	2.57%	20,097	3.20%	22,580	2.59%
P	Est.	1,584	6.79%	2,453	5.79%	3,214	6.52%
	Emp.	17,652	5.01%	21,623	3.44%	34,365	3.95%
R	Est.	930	3.99%	2,056	4.85%	3,600	7.30%
	Emp.	8,607	2.44%	17,937	2.85%	34,451	3.96%
S	Est.		0.00%		0.00%	880	1.78%
	Emp.		0.00%		0.00%	8,209	0.94%
T	Est.	275	1.18%	1,662	3.92%	1,487	3.01%
	Emp.	4,264	1.21%	22,508	3.58%	1,487	0.17%
Suburbs	Est.	7,259	31.12%	17,352	40.94%	22,413	45.44%
	Emp.	89,145	25.29%	194,077	30.86%	252,182	28.97%
Greater Mumbai	Est.	23,325	100%	42,379	100%	49,323	100%
	Emp.	352,468	100%	628,816	100%	870,417	100%

Note	Office sector is defined by the following code numbers :
73	Transport services : Packing, Carting, Travel Agencies etc.
80 & 81	Banking and allied activities , Provident and Insurance Business, Professional & Legal Services, Operation of Lotteries, Renting & Leasing not elsewhere classified & Auctioneering Services
82-85 & 89	
90	Public Administration and Defense Services
92	Education, Scientific & Research Services
94	Welfare, Business, Professional & Labour Organisations
95	Recreational & Cultural Services
99	International & Extra Territorial Bodies

Observations :

- 1) Share of office sector employment in the total in CBD has decreased from 54 % to 48 % while the share of establishments has reduced from 51% to 36% over 1980-1998 period.
- 2) Office sector employment in Rest of Island city (wards E,F &G) has substantially increased over 1980-98 period.
- 3) Share of both establishments and employment in office sector is steadily increasing over 1980-98 period.

Spatial Distribution of Office Establishments in Greater Mumbai 1980, 1990, 1998

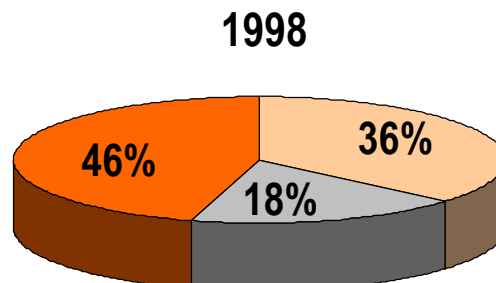
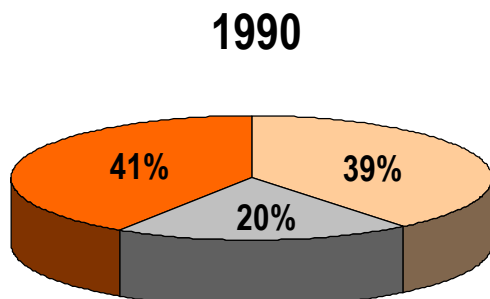
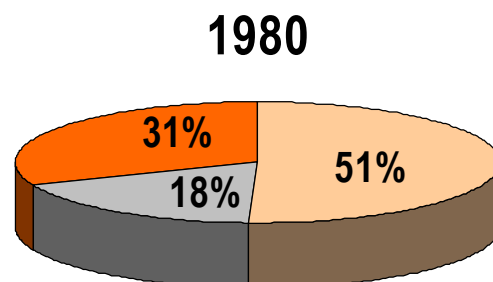
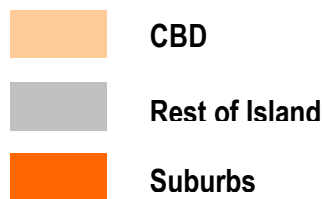


Table 15: Distribution of Establishments by Employment Size-Class in MMR (1998)

Unit		1	2-5	6-19	20-49	50-199	200+	Total
URBAN								
Greater Mumbai	Est.	194,797	225,385	51,946	8,504	3,762	1,032	485,426
	Emp.	194,797	645,464	479,589	241,755	325,394	738,749	2,625,748
Thane	Est.	67,267	78,112	17,362	4,955	725	165	168,586
	Emp.	67,267	216,560	160,876	136,059	63,317	112,577	756,656
Raigad	Est.	5,954	6,393	1,291	351	126	26	14,141
	Emp.	5,954	17,028	13,199	9,999	10,661	11,536	68,377
Sub-total (A)	Est.	268,018	309,890	70,599	13,810	4,613	1,223	668,153
	Emp.	268,018	879,052	653,664	387,813	399,372	862,862	3,450,781
RURAL								
Thane	Est.	7,770	6,228	2,083	344	29	24	16,478
	Emp.	7,770	15,930	20,782	8,963	2,877	6,693	63,015
Raigad	Est.	4,742	7,324	1,212	96	15	13	13,398
	Emp.	4,742	19,047	10,990	2,567	1,201	35,708	46,335
Sub-total (B)	Est.	12,512	13,552	3,295	440	44	37	29,876
	Emp.	12,512	34,977	31,772	11,530	4,078	42,401	109,350
Total (A+B)	Est.	280,530	323,442	73,894	14,250	4,657	1,260	698,029
	Emp.	280,530	914,029	685,436	399,343	403,450	905,263	3,560,131

Observations :

- (1) In Greater Mumbai employment in large establishments (having more than 50 employees) constitutes 41 % of its total employment.
- (2) In Thane and Raigad rural about 70 % of the total employment is found in establishments having less than 20 employees .
- (3) In total MMR the employment is equally divided in establishments employing less than 20 persons and in the rest.

Table 16: Size-wise Office Sector Employment in Greater Mumbai 1998

NIC Code	Year	1		2-4		5-19		20-49		50-99		100-249		250-499		500 +		TOTAL	
		Est.	Emp.	Est.	Emp.	Est.	Emp.	Est.	Emp.	Est.	Emp.	Est.	Emp.	Est.	Emp.	Est.	Emp.	Est.	Emp.
73	1998	563	563	1,849	5,267	1,192	9,667	225	6,832	44	2,647	5	807	1	307	0	0	3,879	26,090
80	1998	246	246	775	2,296	1,650	19,405	1,496	43,841	474	31,492	154	22,085	38	12,695	24	31,477	4,857	163,537
81	1998	110	110	102	281	138	1,425	75	2,345	59	3,842	20	2,836	2	816	3	2,079	509	13,734
82	1998	558	558	725	1,955	316	2,505	36	1,053	4	233	0	0	1	301	0	0	1,640	6,605
83	1998	430	430	576	1,537	291	2,148	138	4,507	11	643	2	259	0	0	0	0	1,448	9,524
84	1998	518	518	283	656	16	122	0	0	0	0	0	0	0	0	0	0	817	1,296
85	1998	451	451	700	1,882	177	1,288	15	475	0	0	0	0	0	0	0	0	1,343	4,096
89	1998	2,369	2,369	7,526	21,602	5,711	46,986	1,153	34,563	295	19,826	90	13,429	22	7,658	9	6,830	17,175	153,263
90	1998	103	103	347	1,033	1,127	13,343	632	17,990	476	33,073	431	69,358	155	53,037	138	181,054	3,409	368,991
92	1998	2,272	2,272	2,147	5,943	1,784	18,233	724	20,675	436	30,202	182	25,878	20	6,180	6	3,528	7,571	112,911
94	1998	1,880	1,880	1,342	3,559	781	6,471	146	4,315	32	2,068	7	898	1	321	0	0	4,189	19,512
95	1998	676	676	931	2,524	499	4,236	60	1,706	19	1,193	8	1,185	2	727	0	0	2,195	12,247
99	1998	91	91	135	371	63	470	1	30	1	79	0	0	0	0	0	0	291	1,041
Total		10,267	10,267	17,438	48,906	13,745	126,299	4,701	138,332	1,851	125,298	899	136,735	242	82,042	180	224,968	49,323	892,847

Table 17: Change in Office Sector Employment in Greater Mumbai 1990-1998

NIC Code	Year	1		2-4		5-19		20-49		50-99		100-249		250-499		500 +		TOTAL	
		Est.	Emp.	Est.	Emp.	Est.	Emp.	Est.	Emp.	Est.	Emp.	Est.	Emp.	Est.	Emp.	Est.	Emp.	Est.	Emp.
73	1990	415	415	1,586	4,599	1,274	10,455	142	3,953	22	1,447	7	904	2	555	1	593	3,449	22,921
	1998	563	563	1,849	5,267	1,192	9,667	225	6,832	44	2,647	5	807	1	307	0	0	3,879	26,090
80	1990	274	274	603	1,677	1,041	11,604	989	30,802	283	18,677	89	12,425	20	6,639	12	22,391	3,311	104,489
	1998	246	246	775	2,296	1,650	19,405	1,496	43,841	474	31,492	154	22,085	38	12,695	24	31,477	4,857	163,537
81	1990	116	116	53	151	53	504	43	1,469	51	3,458	11	1,668	2	728	5	3,810	334	11,904
	1998	110	110	102	281	138	1,425	75	2,345	59	3,842	20	2,836	2	816	3	2,079	509	13,734
82	1990	344	344	439	1,175	159	1,245	11	315	5	338	1	150	0	0	0	0	959	3,567
	1998	558	558	725	1,955	316	2,505	36	1,053	4	233	0	0	1	301	0	0	1,640	6,605
83	1990	434	434	707	1,944	298	2,195	17	521	4	223	2	242	0	0	0	0	1,462	5,559
	1998	430	430	576	1,537	291	2,148	138	4,507	11	643	2	259	0	0	0	0	1,448	9,524
84	1990	158	158	51	126	17	125	1	44	0	0	0	0	0	0	0	0	227	453
	1998	518	518	283	656	16	122	0	0	0	0	0	0	0	0	0	0	817	1,296
85	1990	367	367	443	1,144	140	1,022	11	323	2	113	0	0	0	0	0	0	963	2,969
	1998	451	451	700	1,882	177	1,288	15	475	0	0	0	0	0	0	0	0	1,343	4,096
89	1990	1,733	1,733	4,965	14,447	4,745	39,979	760	22,202	184	12,540	62	9,461	22	7,343	11	11,895	12,482	119,600
	1998	2,369	2,369	7,526	21,602	5,711	46,986	1,153	34,563	295	19,826	90	13,429	22	7,658	9	6,830	17,175	153,263
90	1990	557	557	1,188	3,341	1,431	14,026	697	21,731	369	25,326	288	45,519	92	30,529	71	91,472	4,693	232,501
	1998	103	103	347	1,033	1,127	13,343	632	17,990	476	33,073	431	69,358	155	53,037	138	181,054	3,409	368,991
92	1990	789	789	1,275	3,520	1,233	12,128	581	17,566	272	18,804	118	16,547	13	3,970	4	2,385	4,285	75,709
	1998	2,272	2,272	2,147	5,943	1,784	18,233	724	20,675	436	30,202	182	25,878	20	6,180	6	3,528	7,571	112,911
94	1990	2,548	2,548	2,039	5,432	1,053	8,804	162	4,588	39	2,617	15	1,901	2	583	0	0	5,858	26,473
	1998	1,880	1,880	1,342	3,559	781	6,471	146	4,315	32	2,068	7	898	1	321	0	0	4,189	19,512
95	1990	1,513	1,513	1,842	4,895	806	6,624	121	3,424	18	1,132	17	2,338	4	1,317	1	610	4,322	21,853
	1998	676	676	931	2,524	499	4,236	60	1,706	19	1,193	8	1,185	2	727	0	0	2,195	12,247
99	1990	576	576	557	1,564	305	2,465	37	1,030	9	557	2	273	0	0	0	0	1,486	6,465
	1998	91	91	135	371	63	470	1	30	1	79	0	0	0	0	0	0	291	1,041
Total	1990	9,824	9,824	15,748	44,015	12,555	111,176	3,572	107,968	1,258	85,232	612	91,428	157	51,664	105	133,156	43,831	634,463
	1998	10,267	10,267	17,438	48,906	13,745	126,299	4,701	138,332	1,851	125,298	899	136,735	242	82,042	180	224,968	49,323	892,847

Observation : There is a substantial decline in the employment of the following NIC divisions

94 Welfare, Business, Professional & Labour Organisations

95 Recreational & Cultural Services

99 International & Extra Territorial Bodies

Table 18: Employment in Agriculture and Other Establishments in MMR (1998)

		Agriculture	Non-Agriculture	Total
URBAN				
Greater Mumbai	Est.	-	485,426	485,426
	Emp.	-	2,625,748	2,625,748
Thane	Est.	2,764	165,822	168,586
	Emp.	8,222	748,434	756,656
Raigad	Est.	181	13,960	14,141
	Emp.	669	67,708	68,377
Sub-Total (A)	Est.	2,945	665,208	668,153
	Emp.	8,891	3,441,890	3,450,781
RURAL				
Thane	Est.	2,467	14,011	16,478
	Emp.	5,305	57,710	63,015
Raigad	Est.	1,491	11,907	13,398
	Emp.	6,621	39,714	46,335
Sub-Total (B)	Est.	3,958	25,918	29,876
	Emp.	11,926	97,424	109,350
Grand Total (A+B)	Est.	6,903	691,126	698,029
	Emp.	20,817	3,539,314	3,560,131

Observation: 99 % of the total Establishments and employment are in non-agriculture in MMR.

Table 19: Employment and Establishments by Nature of Operation in MMR (1998)

		Perennial	Non-Perennial	Total
URBAN				
Greater Mumbai	Est.	480,927	4,499	485,426
	Emp.	2,615,323	10,425	2,625,748
Thane	Est.	166,805	1,781	168,586
	Emp.	752,490	4,166	756,656
Raigad	Est.	13,774	367	14,141
	Emp.	67,016	1,361	68,377
Sub-Total (A)	Est.	661,506	6,647	668,153
	Emp.	3,434,829	15,952	3,450,781
RURAL				
Thane	Est.	15,849	629	16,478
	Emp.	56,407	6,608	63,015
Raigad	Est.	1,210	12,188	13,398
	Emp.	6,418	39,917	46,335
Sub-Total (B)	Est.	17,059	12,817	29,876
	Emp.	62,825	46,525	109,350
Grand Total (A+B)	Est.	678,565	19,464	698,029
	Emp.	3,497,654	62,477	3,560,131

Observation: More than 97 % of the total establishments and employment in MMR are perennial in Nature.

Table 20: Employment and Establishments with Premises Status in MMR (1998)

		With Premises	Without Premises	Total
URBAN				
Greater Mumbai	Est.	427,305	58,121	485,426
	Emp.	2,534,647	91,101	2,625,748
Thane	Est.	149,142	19,444	168,586
	Emp.	721,615	35,041	756,656
Raigad	Est.	11,451	2,690	14,141
	Emp.	63,380	4,997	68,377
Sub-Total (A)	Est.	587,898	80,255	668,153
	Emp.	3,319,642	131,139	3,450,781
RURAL				
Thane	Est.	4,156	12,322	16,478
	Emp.	11,409	51,606	63,015
Raigad	Est.	10,406	2,992	13,398
	Emp.	33,065	13,270	46,335
Sub-Total (B)	Est.	14,562	15,314	29,876
	Emp.	44,474	64,876	109,350
Grand Total (A+B)	Est.	602,460	95,569	698,029
	Emp.	3,364,116	196,015	3,560,131

Observation : 86% of the total establishments in MMR operate from premises.

Table 21: Employment and Establishments by Type of Energy Used in MMR (1998)

		Without Power	Electricity	Petrol/Diesel	Others	Total
URBAN						
Greater Mumbai	Est.	383,282	58,493	17,219	26,432	485,426
	Emp.	1,887,404	534,213	36,922	167,209	2,625,748
Thane	Est.	114,069	36,510	8,956	9,051	168,586
	Emp.	357,847	337,820	18,792	42,197	756,656
Raigad	Est.	9,057	2,221	1,171	1,692	14,141
	Emp.	33,055	26,169	3,384	5,769	68,377
Sub-Total (A)	Est.	506,408	97,224	27,346	37,175	668,153
	Emp.	2,278,306	898,202	59,098	215,175	3,450,781
RURAL						
Thane	Est.	10,582	2,665	1,867	1,364	16,478
	Emp.	23,360	26,813	3,620	9,222	63,015
Raigad	Est.	9,342	1,415	1,661	980	13,398
	Emp.	23,089	12,573	6,315	4,358	46,335
Sub-Total (B)	Est.	19,924	4,080	3,528	2,344	29,876
	Emp.	46,449	39,386	9,935	13,580	109,350
Grand Total (A+B)	Est.	526,332	101,304	30,874	39,519	698,029
	Emp.	2,324,755	937,588	69,033	228,755	3,560,131

Observation : Out of the total establishments in MMR, 75% operate without power, 15% use electricity and 5% use petrol/diesel.

Table 22: Employment and Establishments by Type of Ownership in MMR (1998)

		Pvt. Non-Profit Institution	Private Others	Co-operative	Government	Total
URBAN						
Greater Mumbai	Est.	2,196	471,953	2,238	9,039	485,426
	Emp.	21,252	1,736,149	60,503	807,844	2,625,748
Thane	Est.	1,070	164,602	580	2,334	168,586
	Emp.	7,369	653,817	9,863	85,607	756,656
Raigad	Est.	241	13,266	107	527	14,141
	Emp.	960	51,979	1,632	13,806	68,377
Sub-Total (A)	Est.	3,507	649,821	2,925	11,900	668,153
	Emp.	29,581	2,441,945	71,998	907,257	3,450,781
RURAL						
Thane	Est.	159	15,117	60	1,142	16,478
	Emp.	456	58,204	289	4,066	63,015
Raigad	Est.	827	11,057	177	1,337	13,398
	Emp.	1,020	35,122	741	9,452	46,335
Sub-Total (B)	Est.	986	26,174	237	2,479	29,876
	Emp.	1,476	93,326	1,030	13,518	109,350
Grand Total (A+B)	Est.	4,493	675,995	3,162	14,379	698,029
	Emp.	31,057	2,535,271	73,028	920,775	3,560,131

Observations :

- (1) Out of the total establishments in MMR , 97% are in private sector employing 71% of the total employment.
- (2) Out of the total establishments in MMR, 2% are in Government sector employing 26% of the total employment.
- (3) Employment per private sector establishment in MMR is 3.75 while that in Government establishments is 64 .

Table 23: Employment and Establishments by Number of Years of Operation in MMR (1998)

		Less than 1 year	1-5 yrs	6-8 yrs	More than 9 years	Total
URBAN						
Greater Mumbai	Est.	16,632	166,769	52,909	249,116	485,426
	Emp.	48,351	440,156	158,073	1,979,168	2,625,748
Thane	Est.	6,173	87,845	21,968	52,600	168,586
	Emp.	17,340	253,692	91,638	393,986	756,656
Raigad	Est.	382	4,654	1,936	7,169	14,141
	Emp.	1,466	11,774	7,820	47,317	68,377
Sub-Total (A)	Est.	23,187	259,268	76,813	308,885	668,153
	Emp.	67,157	705,622	257,531	2,420,471	3,450,781
RURAL						
Thane	Est.	162	6,956	1,719	7,641	16,478
	Emp.	424	19,229	9,240	34,122	63,015
Raigad	Est.	275	5,154	1,775	6,194	13,398
	Emp.	663	14,097	5,206	26,369	46,335
Sub-Total (B)	Est.	437	12,110	3,494	13,835	29,876
	Emp.	1,087	33,326	14,446	60,491	109,350
Grand Total (A+B)	Est.	23,624	271,378	80,307	322,720	698,029
	Emp.	68,244	738,948	271,977	2,480,962	3,560,131

Observation : Out of the total establishments in MMR, 58% are in operation for more than 6 years

Table 24: Distribution of Private Enterprises According to Social Group and Gender of Owner

		URBAN			RURAL		Total
		Gr.Mumbai	Thane	Raigad	Thane	Raigad	
ST female	Est.	472	152	19	72	28	743
	Emp.	2,860	327	44	160	87	3,478
ST male	Est.	12,578	3,612	228	510	767	17,695
	Emp.	33,243	10,000	598	1,050	4,220	49,111
SC female	Est.	1,609	359	21	73	22	2,084
	Emp.	3,212	2,750	57	98	57	6,174
SC male	Est.	23,426	7,378	526	594	510	32,434
	Emp.	59,309	18,002	1,208	1,319	1,267	81,105
OBC female	Est.	3,961	882	184	404	306	5,737
	Emp.	18,625	2,005	769	726	584	22,709
OBC male	Est.	37,014	17,834	2,302	3,933	3,485	64,568
	Emp.	84,683	48,610	6,076	9,269	8,534	157,172
Total (SC+ST+OBC)	Est.	79,060	30,217	3,280	5,586	5,118	123,261
	Emp.	201,932	81,694	8,752	12,622	14,749	319,749
Others female	Est.	10,592	2,858	281	342	204	14,277
	Emp.	22,649	6,660	522	491	394	30,716
Others male	Est.	382,301	131,527	9,705	9,189	5,735	538,457
	Emp.	1,511,568	565,463	42,705	45,091	19,979	2,184,806
Other than Pvt. Enterprises	Est.	13,473	3,984	875	1,361	2,341	22,034
	Emp.	889,599	102,839	16,398	4,811	11,213	1,024,860
Grand Total	Est.	485,426	168,586	14,141	16,478	13,398	698,029
	Emp.	2,625,748	756,656	68,377	63,015	46,335	3,560,131

Observation : Out of the total establishments in MMR, 18 % have employees belonging to SC,ST and OBC categories and share of these employees together is 9% in the total employment.

Table 25: Ward-wise Population, Establishments and Employment of Greater Mumbai

Ward	(2001) Total Population	(1998) No. of Establishments	(1998) Total Employment
Island City			
A	207,149	34,419	563,840
B	140,188	22,125	94,277
C	190,672	44,745	143,643
D	355,912	31,901	133,692
E	439,393	30,853	158,477
F/N	526,839	11,460	76,246
F/S	392,895	13,511	136,750
G/N	640,509	29,534	117,291
G/S	454,245	21,548	164,521
Sub-Total (A)	3,347,802	240,096	1,588,737
Western Suburb			
H/E	525,873	12,678	85,849
H/W	336,051	6,124	34,496
K/E	865,735	35,836	151,299
K/W	694,151	13,054	70,541
P/N	789,545	26,273	89,519
P/S	436,907	12,060	71,517
R/N	875,058	27,223	98,836
R/S	579,954	12,397	52,079
Sub-Total (B)	5,103,274	145,645	654,136
Eastern Suburb			
L	774,812	20,368	88,814
M/E	673,871	17,452	69,461
M/W	406,973	12,412	43,013
N	602,609	23,202	75,060
S	675,007	12,380	36,921
T	330,050	13,871	69,606
Sub-Total (C)	3,463,322	99,685	382,875
Gr. Mumbai (A+B+C)	11,914,398	485,426	2,625,748

Observation : 51 % of the establishments of the total are located in Island City but they have 61% of the total employment in Greater Mumbai .

Table 26: Ward-wise Employment in Greater Mumbai in 1990 and 1998

Ward	1990	1998	% Gr. Rate
Island City			
A	361,285	563,840	5.72
B	93,363	94,277	0.12
C	147,361	143,643	-0.32
D	113,835	133,692	2.03
E	165,161	158,477	-0.52
F	198,169	212,996	0.91
G	270,193	281,812	0.53
Sub-Total (A)	1,349,367	1,588,737	2.06
Western Suburb			
H	115,933	120,345	0.47
K	231,923	221,840	-0.55
P	166,210	161,036	-0.39
R	123,902	150,915	2.50
Sub-Total (B)	637,968	654,136	0.31
Eastern Suburb			
L	120,976	88,814	-3.79
M	110,024	112,474	0.28
N	90,834	75,060	-2.36
S	62,843	36,921	-6.43
T	53,869	69,606	3.26
Sub-Total (C)	438,546	382,875	-1.68
Gr. Mumbai (A+B+C)	2,425,881	2,625,748	0.99

Ward-wise Growth of Employment in Greater Mumbai during 1990-1998

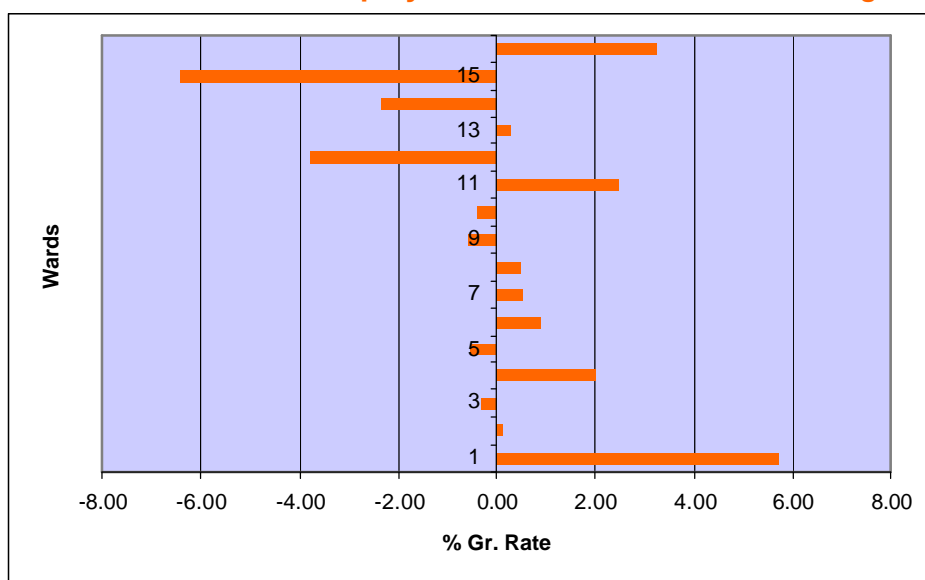


Table 27: Rural Total Workers in Thane District in MMR (1998)

Name of Tehsil	Adults (Male)	Adults (Female)	Child (Male)	Child (Female)	Total
Bhiwandi	21,856	4,539	187	29	26,611
Kalyan	1,647	674	56	8	2,385
Ulhasnagar	2,561	1,138	5	10	3,714
Vasai	24,281	4,345	1,082	597	30,305
Total	50,345	10,696	1,330	644	63,015

Note : Total workers denotes number of persons usually working including hired workers

Table 28: Rural Hired Workers in Thane District in MMR (1998)

Name of Tehsil	Adults (Male)	Adults (Female)	Child (Male)	Child (Female)	Total
Bhiwandi	14,623	3,288	150	22	18,083
Kalyan	636	426	5	1	1,068
Ulhasnagar	974	655	-	-	1,629
Vasai	17,575	3,095	996	546	22,212
Total	33,808	7,464	1,151	569	42,992

Note : Total workers denotes number of persons usually working including hired workers

Table 29: Rural Total Workers in Raigad District in MMR (1998)

Name of Tehsil	Adults (male)	Adults (Female)	Child (male)	Child (Female)	Total
Alibag	9,033	1,988	36	27	11,084
Uran	6,006	1,417	410	36	7,869
Panvel	11,539	2,121	45	7	13,712
Karjat	2,900	629	2	-	3,531
Khalapur	4,599	835	1	1	5,436
Pen	3,563	1,128	4	8	4,703
Total	37,640	8,118	498	79	46,335

Note : Total workers denotes number of persons usually working including hired workers

Table 30: Rural Hired Workers in Raigad District in MMR (1998)

Name of Tehsil	Hired Adult (male)	Hired Adult (female)	Hired Child (male)	Hired Child (female)	Total
Alibag	5,999	942	8	-	6,949
Uran	3,472	585	359	6	4,422
Panvel	7,920	1,476	12	2	9,410
Karjat	1,022	379	2	-	1,403
Khalapur	3,062	519	1	-	3,582
Pen	1,841	601	1	-	2,443
Total	23,316	4,502	383	8	28,209

Table 31: Distribution of Total Workers in Greater Mumbai, Thane and Raigad (1998)

	URBAN			RURAL		Total
	Greater Mumbai	Thane	Raigad	Thane	Raigad	
Adult male	2,217,073	678,436	60,347	50,345	37,640	3,043,841
Adult female	368,500	64,756	7,296	10,696	8,118	459,366
Child male	32,581	11,505	656	1,330	498	46,570
Child female	7,594	1,959	78	644	79	10,354
Total	2,625,748	756,656	68,377	63,015	46,335	3,560,131

Table 32: Distribution of Hired Workers in Greater Mumbai, Thane and Raigad (1998)

	URBAN			RURAL		Total
	Greater Mumbai	Thane	Raigad	Thane	Raigad	
Hired adult male	1,680,530	491,306	43,702	33,808	23,316	2,272,662
Hired adult female	334,643	55,719	5,919	7,464	4,502	408,247
Hired Child male	24,978	10,341	327	1,151	383	37,180
Hired child female	4,406	1,349	43	569	8	6,375
Total	2,044,557	558,715	49,991	42,992	28,209	2,724,464

Table 33: Sector-wise Net Domestic Product at Constant (1993-94) Prices

Year	1993-94		1994-95		1995-96		1996-97		1997-98		1998-99	
Description	Mumbai	MMR	Mumbai	MMR	Mumbai	MMR	Mumbai	MMR	Mumbai	MMR	Mumbai	MMR
Agriculture	13,201	96,685	16,432	96,404	20,944	107,325	26,973	118,723	33,429	122,062	42,094	138,224
Forestry & logging	0	8,878	0	6,445	0	2,865	0	5,686	0	6,356	0	9,645
Fisheries	18,915	27,881	15,569	26,104	21,270	41,661	27,242	45,215	16,645	34,276	16,524	30,825
Mining & Quarrying	0	265	0	187	0	259	0	206	0	174	0	175
Primary Sector	32,116	133,709	32,001	129,140	42,214	152,110	54,215	169,830	50,074	162,868	58,618	178,869
Manufacturing	788,499	1,414,331	739,127	1,364,388	829,744	1,578,967	881,024	1,491,998	988,666	1,773,084	1,058,041	1,894,454
Construction	97,582	162,772	98,497	164,299	98,549	164,386	105,147	175,392	114,652	191,246	128,152	213,765
Elect. Gas & Water supply	67,066	85,348	74,640	94,056	102,025	124,921	96,091	120,561	109,922	137,809	119,832	144,653
Secondary sector	953,147	1,662,451	912,264	1,622,743	1,030,318	1,868,274	1,082,262	1,787,951	1,213,240	2,102,139	1,306,025	2,252,872
Railway	20,358	37,063	21,012	38,253	23,240	41,638	30,064	53,020	72,927	84,758	35,912	61,397
Transport	207,205	245,429	232,210	278,460	258,714	314,097	266,581	322,373	274,778	338,206	294,408	365,611
Communication	68,952	98,097	80,561	114,717	95,846	136,606	118,049	168,403	135,821	193,868	159,668	228,062
Trade , Hotel & Restaurant	371,626	513,178	379,672	524,289	457,613	631,918	494,313	682,597	547,451	755,976	611,339	844,198
Banking & Insurance	549,277	741,755	562,914	760,171	615,661	831,402	565,175	763,224	640,166	864,493	666,951	900,667
Real Estate , O.Dwelling,B/S	117,119	159,433	122,750	166,777	130,471	176,905	138,651	187,608	145,890	196,889	154,063	207,541
Public Adm.	74,126	109,528	78,833	116,030	84,750	124,799	90,285	132,922	104,533	154,141	104,112	153,517
Other services	138,781	194,267	143,447	199,241	153,497	212,424	167,086	230,469	162,223	225,251	200,029	276,592
Tertiary sector	1,547,444	2,098,750	1,621,399	2,197,938	1,819,792	2,469,789	1,870,204	2,540,616	2,083,789	2,813,582	2,226,482	3,037,585
Total	2,532,707	3,894,910	2,565,664	3,949,821	2,892,324	4,490,173	3,006,681	4,498,397	3,347,103	5,078,589	3,591,125	5,469,326

Note : MMR covers Districts of Mumbai City, Mumbai Suburbs, Thane and Raigad.

Source : Government of Maharashtra: District Domestic product of Maharashtra 1993-94 to 1998-99 (Base Year 1993-94) , Mumbai 2001

Observations : 1. The share of net domestic product of Greater Mumbai in that of MMR has remained constant at 65% over the period 1993-94 to 1998-99

2. Contribution of a secondary and tertiary sector to the total NDP of MMR has remained constant at 57% and 73% respectively over the period 1993-94 to 1998-99.

