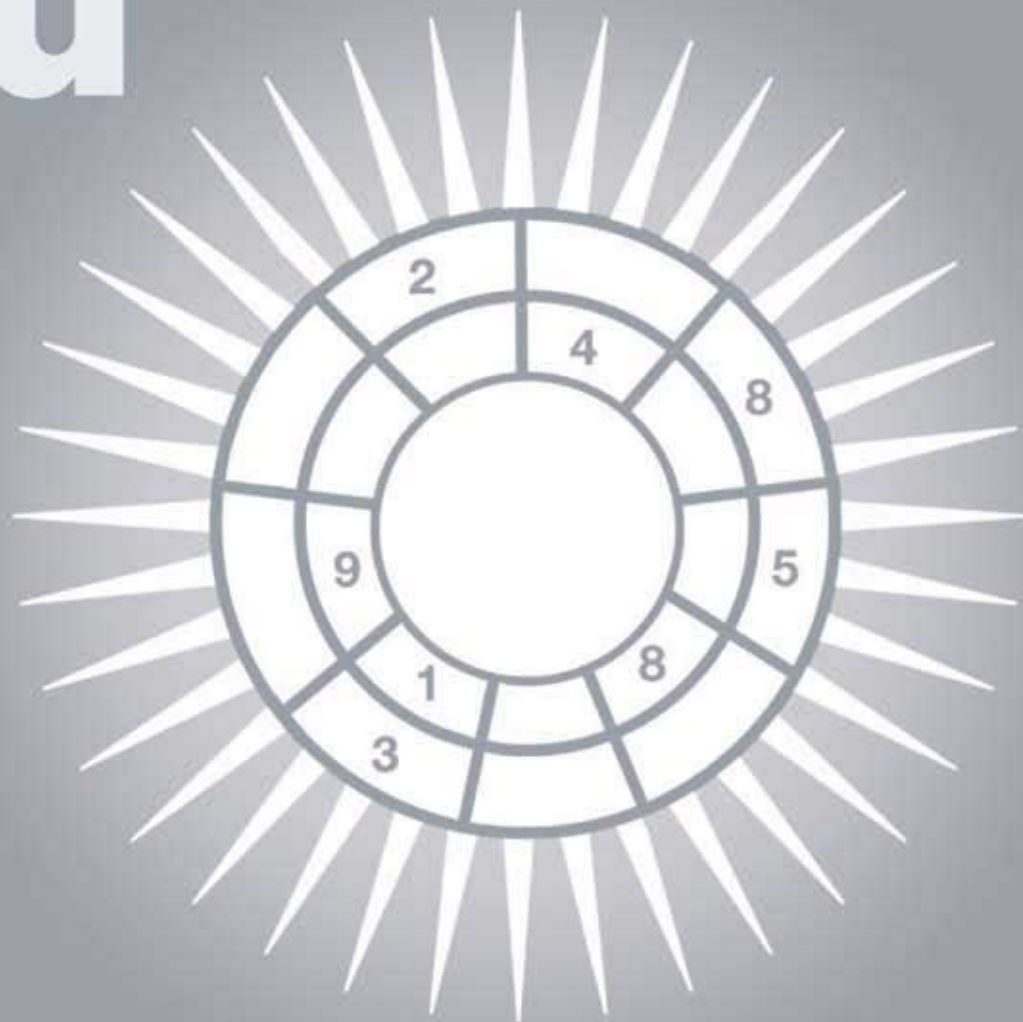


summer sudoku

Eight pages of puzzles
Polygon, Codeword,
Classic and Killer



Fill in the grid so that both rings contain the digits 1 to 9. There are no neighbouring cells with the same or consecutive digits



WIN THE NEW CITROËN C2

polygon

Summer Su Doku

Welcome to another eight pages of the best puzzles in Britain. And welcome in particular to Codeword, the new puzzle (to *The Times*) that will become a regular fixture on the back page of *times2* from next month. Codeword was by far and away the most popular choice when we recently asked readers to suggest a new puzzle for *The Times*. We feel that it will provide a nice balance for the Su Doku puzzles, the Crossword and the Polygon on the back page on Monday to Friday. We have also listened to fans of the Polygon who have been asking for a Saturday fix of their favourite word game. It will appear in the puzzle pages of the Books section from next Saturday.



Rachel Roth, 2006 champion

More news for Su Doku players. *The Times National Su Doku Championships* are coming round again and this time the finals will be in London in September. Qualifying puzzles will be published in *times2* all next week from Monday and in Books on Saturday. Don't miss your chance to become our champion and walk away with a big silver cup and £1,000. And even if you think you may not have a shot at the title, enter anyway. Those that take part say it is a great way to pit your wits against others and the clock in a fun day out. In particular, if you are under 16 and do Su Doku (and I know thousands of schools use it), have a go at the Junior Championships. There are lots of prizes to be won.

Also keep an eye on timesonline.co.uk/sudoku. We will be launching a new interactive game very soon.

And finally — don't forget the Su Doku Challenge on page 4. Solve the puzzle, text or call in your answer and win a Citroen C2. Good luck.

MICHAEL HARVEY
Features editor, *times2*

Using the given letters no more than once, make as many words as possible of four or more letters, always including the central letter. Capitalised words, plurals, conjugated verbs (past tense etc), adverbs ending in LY, comparatives and superlatives are disallowed.
Full rules and tips: timesonline.co.uk/games

Number: 1



How you rate: 16 words, average; 22, good; 27, very good; 33, excellent.

Number: 2



How you rate: 19 words, average; 25, good; 31, very good; 38, excellent.

Number: 3



How you rate: 17 words, average; 22, good; 28, very good; 34, excellent.

Number: 4



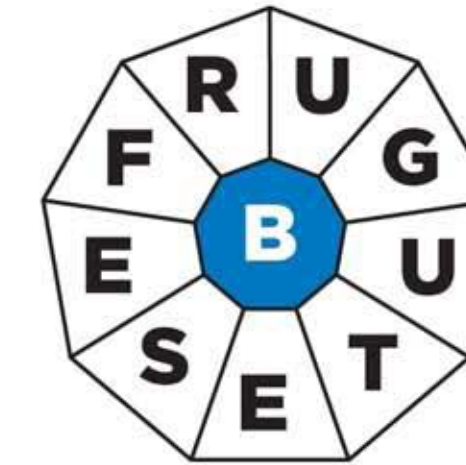
How you rate: 18 words, average; 24, good; 30, very good; 37, excellent.

Number: 5



How you rate: 19 words, average; 26, good; 32, very good; 39, excellent.

Number: 6



How you rate: 15 words, average; 20, good; 25, very good; 30, excellent.

codeword

Numbers are substituted for letters in this crossword grid. Below the grid is the key and you will see that some letters are solved. When you have completed your first word or phrase, you will have the clues to more letters. Enter them in the key grid and the main grid and check the letters on the alphabet list as you complete them.

Number: 7

4	3	1	17	2	11	26	23		10	26	5	12
13		2		26		9		5		16		26
17	2	19	14	11		14	5	20	11	26	4	11
5		13		11		25		20		15		11
25	20	19	23		15	20	2	7	26	11	11	17
	5		9		18		11					2
11	20	26	15	19	14		12	20	8	17	2	6
20			6		23		14		9			
20	5	17	26	2	11	19	25		22	17	2	15
11		2		17		21		19		11		25
21	19	11	26	7	1	25		25	26	19	24	26
26		26		18		17		4		11		19
23	19	5	10		4	19	12	20	11	26	1	5

~~X~~ B C D ~~X~~ F G H I J K L M N O P Q R S T U ~~X~~ W X Y Z
 1 2 3 4 5 6 7 8 9 10 11 12 13
 14 15 16 17 18 19 **A** 20 21 22 23 24 **V** 25 26 **E**

Number: 8

	7		12		9		9		23		22	
	4	13	20	9	17	2	4	13	26	26	14	
	19		2		13		13		20		7	
1	7	16	4	7	25		26	2	10	23	2	22
	10		18		24		23		I	M	P	16
21	13	24	7	25	7	25	9		20	25	11	7
			16						16			
15	7	17	9		1	5	20	25	17	7	7	16
	8			5		16		25			10	
5	4	20	26	13	25		4	6	20	3	3	14
	2		13		10		5		17		25	
9	12	20	7	13	10	2	9	6	26	14		
7		22		17		26		9			5	

A B C D E F G H ~~X~~ J K L ~~X~~ N O ~~X~~ Q R S T U V W X Y Z
 1 2 3 4 5 6 7 8 9 10 11 12 13
 14 15 **I** 16 17 18 19 20 21 22 23 **M** 24 25 26 **P**

Number: 9

22	4	15	5	24	3		12	26	24	22	23	11
	22		1		24		26		8		16	
22	26	25	22		25	3	22	13	16	25	15	3
	R	I	A									
6		5		12		3		26		22		
7	22	3	25	23	1	24	9		22	2	16	15
	16			10		9		13				
12	1	24	16	16	15		22	26	16	25	23	16
			4		17		17				20	
22	13	18	24		26	25	12	1	16	19	17	2
	26		22		1		1		17		22	
14	22	13	5	10	15	15	16		3	17	2	2
	21		24		15		24		25		25	
4	24	2	9	24	9		26	24	13	24	9	24

~~X~~ B C D E F G H ~~X~~ J K L M N O P Q ~~X~~ S T U V W X Y Z
 1 2 3 4 5 6 7 8 9 10 11 12 13
 14 15 16 17 18 19 20 21 22 **A** 23 24 25 26 **I** **R**

Number: 10

1	15	13	10	16		13	16	20	9	5	6	16	
	15		25		23		23		18		8		
2	13	3	24	13	5	6	5		15	4	23	14	
	10		24		13		25		4		6		
11	13	4	15	9	21		1	15	4	2	21		
			6		16		23				19		
13	12	13	5		24	15	25		16	13	16	14	
	4			6		5		22					
	16	4	15	13	5		13	19	25	15	23	16	
	23		4		13		15		6		14		
24	15	13	2		7	6	E	L	I	6	17	6	5
	6		6		15		3		26		10		
13	19	4	5	21	6	19		18	6	21	6	16	

A B C D ~~X~~ F G H ~~X~~ J K ~~X~~ M N O P Q R S T U V W X Y Z
 1 2 3 4 5 6 7 8 9 **E** 10 **I** 11 12 13
 14 15 16 17 18 19 20 21 22 23 24 25 26 **L**

Number: 11

1	4	7	8	3	18		14	E	C	A	13	3
	12		24		3		26		9		23	
13	23	20	3		11	18	26	21	7	5	8	3
	17		23		3				6		18	
16	3	23	11	3	18		16	3	6	3	23	10
			9		10		3				13	
26	14	3	19		26	23	6		8	18	3	2
	4			18		3		24				
26	8	8	4	11	19		8	24	3	2	3	16
	22		5		10		15		25			
17	9	23	16	7	26	9	7		4	5	7	10
	3		4		9		5		3		9	
23	12	8	3	5	16		17	23	12	24	3	12

~~X~~ B ~~X~~ D ~~X~~ F G H I J K L M N O P Q R S T U V W X Y Z
 1 2 3 **E** 4 5 6 7 8 **C** 9 10 11 12 13
 14 15 16 17 18 19 20 21 22 23 **A** 24 25 26

Number: 12

26	14	10	7	2	10	1		11	18	23	14	23
14		14		4		25		2		2		25
10	2	18	24	14		26	11	17	23	15	11	12
13		25		9		26		23		2		14
22	6	26	25	22	10	14	9		8	16	14	9
14			23		9		17		25			
10	22	26	26	14	9		18	24	14	10	2	15
		16		9		15		11			16	
6	14	25	16		18	25	6	14	16	16	22	25
25		5		3		17		16		25	19	
18	11	2	21	25	10	17		25	21	10	14	14
25		14		20		14		18		21		10
3	22	17	26	1		17	14	14	9	14	10	17

~~X~~ B C D E F G H ~~X~~ J K L M N O P Q ~~X~~ S T U V W X Y Z
 1 2 3 4 5 6 7 8 9 10 **R** 11 12 13
 14 15 16 17 18 19 20 21 22 **I** 23 24 25 **A** 26

Number: 13

	9	1	16	24	25		20	10	12	18	21		
4		2		19		18		24		24		4	
7	18	1	E	L	T		26	3	20	19	21	1	7
21		10		4		24		26		19		4	
1	24	19		10	12	23	16	4		6	12	12	
		12			17		1					10	
22	3	23	4	17	15		11	23	12	21	21	15	
23			4		24					24			
12	7	7		23	4	7	16	1		10	12	12	
14		23		1		3		13		5		10	
22	24	4	25	17	3	21		22	12	3	10	26	
19		9		21		19		1		1		1	
	11	1	23	15	21		10	21	1	23	6		

A B C D ~~X~~ F G H I J K ~~X~~ M N O P Q R S ~~X~~ U V W X Y Z
 1 2 3 4 5 6 7 8 9 10 11 12 13
 14 15 16 17 18 19 **T** 20 21 **L** 22 23 24 25 26

Number: 14

	15	25	3	1	19		19	23	23	19	1		
2		19		16		25		12		18		12	
15	21	3	20	19		13	8	25	5	15	16	1	
11		4		15		12		25		13		3	
6	11	8		26	8	22	5	3		5	12	12	
		16			22		19				8		
24	19	19	1	19	1		13	16	12	13	8	25	
3				9		2				16			
11	3	21		J	17	19	16	14		12	24	19	
19		15		E	C		15		19		10		17
16	19	7	8	5	19	1		15	13	8	5	19	
14		19		19		14		16		19		11	
	23	21	15	1	19		8	11	3	5	14		

~~X~~ B ~~X~~ D ~~X~~ F G H I ~~X~~ K L M N O P Q R S T U V W X Y Z
 1 2 3 4 5 6 7 8 9 **J** 10 11 12 13
 14 15 16 17 18 19 **E** 20 21 22 **C** 23 24 25 26

classic

How to play: fill the grid so that every column, every row and every 3x3 box contains the digits 1 to 9.

WIN A NEW CITROËN C2



Not only has the C2 head-turning good looks but also performance to match.

The groundbreaking design is about more than just good looks. You will be impressed to see how clever the C2 is. The emphasis on the intelligent application of innovation has created a modular interior with a split opening tailgate and independent sliding and folding rear seats.

Compact, easy to handle and very much at ease in the city, the C2 offers much more space than you would ever have expected. In terms of safety, the C2 is a front runner in its segment with ABS, ESP and up to 6 airbags available.

This new black C2 Airplay+ adds air conditioning and electric door mirrors to the equipment list of the 1.1i Design on which it is based.

All of Citroën's Airplay+ models come with a latest generation 4Gb iPod Nano, capable of storing around 1,000 tracks, and an integrated docking station that charges the iPod and allows music to be played via the head unit and speakers.

For further information www.citroen.co.uk

SU DOKU CHALLENGE

7	8	5	6			1
	2	6		1		4 7
				9		2
	7			8 6		
8			6			1
		9 7				3
2			1			
	6 3		2		5 8	
	5			6 1 2 7		

Text **CAR** followed by a space and the numbers in the shaded cells in any order to 84900 (eg. CAR 123) or call 0901 2942422, by midnight on Friday, June 22. Each entry (text or phone) costs £1. All correct answers go into a draw. See timesonline.co.uk/sudoku for terms and conditions and winner's name. ROI text 57501 or call 1515606065. €1 per entry. Helpline 0870 8920000.

Number: 15

EASY

4	6		5	2		7 8
3		2		1		6 5
6 5			8	4		3 1
		3			4	
2 9			3	1		8 6
7		8		4		1 9
1 3			9 8			6 4

Number: 16

MILD

8		5		6		7		1
2 9								8 6
				1				
	1 8	9			2	5 6		
5								8
	6 4	8			1 2	9		
				8				
6 8							4 7	
1	3		2		8			9

Number: 17

DIFFICULT

1 3		4				
			5			
7 6 8		2 3				4
9 4					7 5 8	
5 2 7						3 9
	1		6 3	5 7 4		
				7		
				5	1 6	

Number: 18

DIFFICULT

		9		1		3		
			2		5			
	5 1					9 7		
	7			4			5	
1			9		6			7
	6			5				1
	1 6					7 8		
			3		1			
		7		8		5		

Number: 19

FIENDISH

5 3			2 8			4
		2		6		5
						1
6 2			9 4			
3						9
			2 1		6 3	
	1					
9			3		8	
7			6 1			9 2

Number: 20

FIENDISH

3			2					1
	8 6			3				9
		9 1				3 6		
							1 8	
	6							7
8	2							
	9 4				3 7			
	5			4		8 3		
7					2			5

super fiendish

How to play: fill the grid so that every column, every row and every 3x3 box contains the digits 1 to 9.

Number: 21

		2	5		7	6		
	4			3				9
8	9							7 3
			9	1	6			
		1					7	
			2	7	3			
2	1							8 6
	5			6				1
		9	1		5	4		

Number: 22

8	7							5
					8			2 3
3		5	9					
		6		3				7
			1	8	7			
	3			6			2	
					2	5		1
4	9		3					
	5					3		4

Number: 23

5			2	3				7
	8	1		7			5	6
		2	6	1	7	3		
		7					1	
		8	3	5	4	7		
	1	4		2			6	7
7			9	1				4

Number: 24

	7							
		9	5		2			8
		4			9	2	7	
	4	8	3		1		5	
				2				
	2		7		8	4	1	
	5	2	6			3		
3			2		5	9		
								2

Number: 25

				3	7		4	
			8					
		6		4		9		8
	1		6		2			3
		3		1		4		
2			4		9			8
1		4		6		3		
					1			
7	9	2						

Number: 26

9	4					2		3
			2	3				
	3		6		9		5	
4				2				1
	8	5				3	4	
1				3				6
	4		3		1		7	
			7		8			
5	7					6		8

Number: 27

	9			7			1	
5			6					3
			3	9	5			
6	9					4	8	
		8				1		
	7	2				3		6
			4	7	6			
7					1			2
	1		2					6

Number: 28

	9	7			6	5	2	
5	2				7	9		
				5			7	
				7	9		3	1
	4	3		2	1			
	1			6				
		2	9				8	1
	8	6	3			7	5	

Number: 29

3	4			7				6
	9		8					3 7
				2				
1			6		4		5	
		2				6		
	3		2		5			1
				3				
7	1				2		8	
4			1				9	2

killer

How to play: fill the grid so that every column, every row and every 3x3 box contains the digits 1 to 9. The digits within the cells joined by dotted lines add up to the printed top left-hand figure. Within each dotted-line "shape", a digit **CANNOT** be repeated.

Number: 30 Time 11 mins GENTLE

A 9x9 grid for Killer Sudoku puzzle 30. The grid is divided into 3x3 boxes. Dotted lines indicate cages with their sums: (1,1)-(1,2)-(1,3) sum 27; (1,4)-(1,5)-(1,6) sum 17; (1,7)-(1,8)-(1,9) sum 4; (2,1)-(2,2)-(2,3) sum 4; (2,4)-(2,5)-(2,6) sum 12; (2,7)-(2,8)-(2,9) sum 8; (3,1)-(3,2)-(3,3) sum 16; (3,4)-(3,5)-(3,6) sum 13; (3,7)-(3,8)-(3,9) sum 8; (4,1)-(4,2)-(4,3) sum 17; (4,4)-(4,5)-(4,6) sum 9; (4,7)-(4,8)-(4,9) sum 12; (5,1)-(5,2)-(5,3) sum 10; (5,4)-(5,5)-(5,6) sum 13; (5,7)-(5,8)-(5,9) sum 10; (6,1)-(6,2)-(6,3) sum 11; (6,4)-(6,5)-(6,6) sum 4; (6,7)-(6,8)-(6,9) sum 10; (7,1)-(7,2)-(7,3) sum 20; (7,4)-(7,5)-(7,6) sum 13; (7,7)-(7,8)-(7,9) sum 5; (8,1)-(8,2)-(8,3) sum 10; (8,4)-(8,5)-(8,6) sum 15; (8,7)-(8,8)-(8,9) sum 5.

Number: 31 Time 15 mins MODERATE

A 9x9 grid for Killer Sudoku puzzle 31. The grid is divided into 3x3 boxes. Dotted lines indicate cages with their sums: (1,1)-(1,2)-(1,3) sum 17; (1,4)-(1,5)-(1,6) sum 7; (1,7)-(1,8)-(1,9) sum 4; (2,1)-(2,2)-(2,3) sum 11; (2,4)-(2,5)-(2,6) sum 17; (2,7)-(2,8)-(2,9) sum 9; (3,1)-(3,2)-(3,3) sum 13; (3,4)-(3,5)-(3,6) sum 3; (3,7)-(3,8)-(3,9) sum 15; (4,1)-(4,2)-(4,3) sum 12; (4,4)-(4,5)-(4,6) sum 8; (4,7)-(4,8)-(4,9) sum 16; (5,1)-(5,2)-(5,3) sum 10; (5,4)-(5,5)-(5,6) sum 6; (5,7)-(5,8)-(5,9) sum 6; (6,1)-(6,2)-(6,3) sum 10; (6,4)-(6,5)-(6,6) sum 16; (6,7)-(6,8)-(6,9) sum 7; (7,1)-(7,2)-(7,3) sum 8; (7,4)-(7,5)-(7,6) sum 17; (7,7)-(7,8)-(7,9) sum 3; (8,1)-(8,2)-(8,3) sum 9; (8,4)-(8,5)-(8,6) sum 8; (8,7)-(8,8)-(8,9) sum 11; (9,1)-(9,2)-(9,3) sum 17; (9,4)-(9,5)-(9,6) sum 8; (9,7)-(9,8)-(9,9) sum 16.

Number: 32 Time 42 mins TRICKY

A 9x9 grid for Killer Sudoku puzzle 32. The grid is divided into 3x3 boxes. Dotted lines indicate cages with their sums: (1,1)-(1,2)-(1,3) sum 16; (1,4)-(1,5)-(1,6) sum 10; (1,7)-(1,8)-(1,9) sum 13; (2,1)-(2,2)-(2,3) sum 11; (2,4)-(2,5)-(2,6) sum 11; (2,7)-(2,8)-(2,9) sum 21; (3,1)-(3,2)-(3,3) sum 10; (3,4)-(3,5)-(3,6) sum 26; (3,7)-(3,8)-(3,9) sum 8; (4,1)-(4,2)-(4,3) sum 4; (4,4)-(4,5)-(4,6) sum 15; (4,7)-(4,8)-(4,9) sum 8; (5,1)-(5,2)-(5,3) sum 27; (5,4)-(5,5)-(5,6) sum 15; (5,7)-(5,8)-(5,9) sum 25; (6,1)-(6,2)-(6,3) sum 19; (6,4)-(6,5)-(6,6) sum 20; (6,7)-(6,8)-(6,9) sum 26; (7,1)-(7,2)-(7,3) sum 11; (7,4)-(7,5)-(7,6) sum 13; (7,7)-(7,8)-(7,9) sum 13; (8,1)-(8,2)-(8,3) sum 11; (8,4)-(8,5)-(8,6) sum 6; (8,7)-(8,8)-(8,9) sum 14; (9,1)-(9,2)-(9,3) sum 9; (9,4)-(9,5)-(9,6) sum 15; (9,7)-(9,8)-(9,9) sum 11.

Number: 33 Time 48 mins TOUGH

A 9x9 grid for Killer Sudoku puzzle 33. The grid is divided into 3x3 boxes. Dotted lines indicate cages with their sums: (1,1)-(1,2)-(1,3) sum 17; (1,4)-(1,5)-(1,6) sum 7; (1,7)-(1,8)-(1,9) sum 15; (2,1)-(2,2)-(2,3) sum 9; (2,4)-(2,5)-(2,6) sum 13; (2,7)-(2,8)-(2,9) sum 21; (3,1)-(3,2)-(3,3) sum 31; (3,4)-(3,5)-(3,6) sum 12; (3,7)-(3,8)-(3,9) sum 17; (4,1)-(4,2)-(4,3) sum 9; (4,4)-(4,5)-(4,6) sum 7; (4,7)-(4,8)-(4,9) sum 19; (5,1)-(5,2)-(5,3) sum 26; (5,4)-(5,5)-(5,6) sum 11; (5,7)-(5,8)-(5,9) sum 9; (6,1)-(6,2)-(6,3) sum 13; (6,4)-(6,5)-(6,6) sum 6; (6,7)-(6,8)-(6,9) sum 6; (7,1)-(7,2)-(7,3) sum 7; (7,4)-(7,5)-(7,6) sum 23; (7,7)-(7,8)-(7,9) sum 12; (8,1)-(8,2)-(8,3) sum 5; (8,4)-(8,5)-(8,6) sum 11; (8,7)-(8,8)-(8,9) sum 13.

Number: 34 Time 50 mins TOUGH

A 9x9 grid for Killer Sudoku puzzle 34. The grid is divided into 3x3 boxes. Dotted lines indicate cages with their sums: (1,1)-(1,2)-(1,3) sum 17; (1,4)-(1,5)-(1,6) sum 18; (1,7)-(1,8)-(1,9) sum 15; (2,1)-(2,2)-(2,3) sum 12; (2,4)-(2,5)-(2,6) sum 18; (2,7)-(2,8)-(2,9) sum 27; (3,1)-(3,2)-(3,3) sum 11; (3,4)-(3,5)-(3,6) sum 13; (3,7)-(3,8)-(3,9) sum 14; (4,1)-(4,2)-(4,3) sum 18; (4,4)-(4,5)-(4,6) sum 10; (4,7)-(4,8)-(4,9) sum 12; (5,1)-(5,2)-(5,3) sum 18; (5,4)-(5,5)-(5,6) sum 8; (5,7)-(5,8)-(5,9) sum 11; (6,1)-(6,2)-(6,3) sum 15; (6,4)-(6,5)-(6,6) sum 7; (6,7)-(6,8)-(6,9) sum 17; (7,1)-(7,2)-(7,3) sum 12; (7,4)-(7,5)-(7,6) sum 12; (7,7)-(7,8)-(7,9) sum 16.

Number: 35 Time 1 hour DEADLY

A 9x9 grid for Killer Sudoku puzzle 35. The grid is divided into 3x3 boxes. Dotted lines indicate cages with their sums: (1,1)-(1,2)-(1,3) sum 16; (1,4)-(1,5)-(1,6) sum 11; (1,7)-(1,8)-(1,9) sum 10; (2,1)-(2,2)-(2,3) sum 11; (2,4)-(2,5)-(2,6) sum 16; (2,7)-(2,8)-(2,9) sum 17; (3,1)-(3,2)-(3,3) sum 29; (3,4)-(3,5)-(3,6) sum 9; (3,7)-(3,8)-(3,9) sum 13; (4,1)-(4,2)-(4,3) sum 6; (4,4)-(4,5)-(4,6) sum 19; (4,7)-(4,8)-(4,9) sum 9; (5,1)-(5,2)-(5,3) sum 18; (5,4)-(5,5)-(5,6) sum 13; (5,7)-(5,8)-(5,9) sum 25; (6,1)-(6,2)-(6,3) sum 11; (6,4)-(6,5)-(6,6) sum 9; (6,7)-(6,8)-(6,9) sum 6; (7,1)-(7,2)-(7,3) sum 14; (7,4)-(7,5)-(7,6) sum 11; (7,7)-(7,8)-(7,9) sum 25; (8,1)-(8,2)-(8,3) sum 20; (8,4)-(8,5)-(8,6) sum 14; (8,7)-(8,8)-(8,9) sum 18; (9,1)-(9,2)-(9,3) sum 7; (9,4)-(9,5)-(9,6) sum 7; (9,7)-(9,8)-(9,9) sum 7.

Number: 36 Time 1 hour 5 mins DEADLY

A 9x9 grid for Killer Sudoku puzzle 36. The grid is divided into 3x3 boxes. Dotted lines indicate cages with their sums: (1,1)-(1,2)-(1,3) sum 11; (1,4)-(1,5)-(1,6) sum 11; (1,7)-(1,8)-(1,9) sum 12; (2,1)-(2,2)-(2,3) sum 15; (2,4)-(2,5)-(2,6) sum 14; (2,7)-(2,8)-(2,9) sum 8; (3,1)-(3,2)-(3,3) sum 17; (3,4)-(3,5)-(3,6) sum 17; (3,7)-(3,8)-(3,9) sum 20; (4,1)-(4,2)-(4,3) sum 11; (4,4)-(4,5)-(4,6) sum 8; (4,7)-(4,8)-(4,9) sum 13; (5,1)-(5,2)-(5,3) sum 12; (5,4)-(5,5)-(5,6) sum 12; (5,7)-(5,8)-(5,9) sum 12; (6,1)-(6,2)-(6,3) sum 12; (6,4)-(6,5)-(6,6) sum 11; (6,7)-(6,8)-(6,9) sum 21; (7,1)-(7,2)-(7,3) sum 9; (7,4)-(7,5)-(7,6) sum 23; (8,1)-(8,2)-(8,3) sum 19; (8,4)-(8,5)-(8,6) sum 3; (8,7)-(8,8)-(8,9) sum 12; (9,1)-(9,2)-(9,3) sum 21; (9,4)-(9,5)-(9,6) sum 14; (9,7)-(9,8)-(9,9) sum 14; (9,9) sum 15.

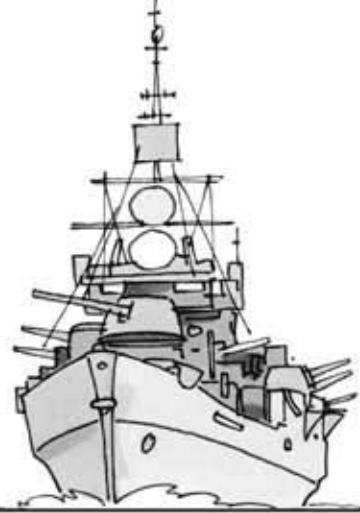
Number: 37 Time 1 hour 5 mins DEADLY

A 9x9 grid for Killer Sudoku puzzle 37. The grid is divided into 3x3 boxes. Dotted lines indicate cages with their sums: (1,1)-(1,2)-(1,3) sum 30; (1,4)-(1,5)-(1,6) sum 7; (1,7)-(1,8)-(1,9) sum 13; (2,1)-(2,2)-(2,3) sum 12; (2,4)-(2,5)-(2,6) sum 7; (2,7)-(2,8)-(2,9) sum 25; (3,1)-(3,2)-(3,3) sum 19; (3,4)-(3,5)-(3,6) sum 15; (3,7)-(3,8)-(3,9) sum 11; (4,1)-(4,2)-(4,3) sum 19; (4,4)-(4,5)-(4,6) sum 19; (4,7)-(4,8)-(4,9) sum 11; (5,1)-(5,2)-(5,3) sum 15; (5,4)-(5,5)-(5,6) sum 10; (5,7)-(5,8)-(5,9) sum 14; (6,1)-(6,2)-(6,3) sum 7; (6,4)-(6,5)-(6,6) sum 14; (6,7)-(6,8)-(6,9) sum 15; (7,1)-(7,2)-(7,3) sum 11; (7,4)-(7,5)-(7,6) sum 11; (7,7)-(7,8)-(7,9) sum 19; (8,1)-(8,2)-(8,3) sum 5; (8,4)-(8,5)-(8,6) sum 12; (8,7)-(8,8)-(8,9) sum 17; (8,9) sum 17.

Number: 38 Time 1 hour 35 mins DEADLY

A 9x9 grid for Killer Sudoku puzzle 38. The grid is divided into 3x3 boxes. Dotted lines indicate cages with their sums: (1,1)-(1,2)-(1,3) sum 37; (1,4)-(1,5)-(1,6) sum 32; (1,7)-(1,8)-(1,9) sum 4; (2,1)-(2,2)-(2,3) sum 11; (2,4)-(2,5)-(2,6) sum 9; (2,7)-(2,8)-(2,9) sum 17; (3,1)-(3,2)-(3,3) sum 11; (3,4)-(3,5)-(3,6) sum 11; (3,7)-(3,8)-(3,9) sum 14; (4,1)-(4,2)-(4,3) sum 12; (4,4)-(4,5)-(4,6) sum 13; (4,7)-(4,8)-(4,9) sum 10; (5,1)-(5,2)-(5,3) sum 14; (5,4)-(5,5)-(5,6) sum 10; (5,7)-(5,8)-(5,9) sum 19; (6,1)-(6,2)-(6,3) sum 31; (6,4)-(6,5)-(6,6) sum 31; (6,7)-(6,8)-(6,9) sum 19; (7,1)-(7,2)-(7,3) sum 11; (7,4)-(7,5)-(7,6) sum 7; (7,7)-(7,8)-(7,9) sum 9; (8,1)-(8,2)-(8,3) sum 15; (8,4)-(8,5)-(8,6) sum 15; (8,7)-(8,8)-(8,9) sum 12; (8,9) sum 12.

battleships



How to play:

Do you remember the old game of Battleships? These puzzles are based on that idea. Your task is to find the vessels in the diagram. Some parts of ships or sea squares have already been filled in. A number next to a row or column refers to the number of occupied squares in that row or column. The ships may be positioned horizontally or vertically, but no two ships or parts of ships are in adjacent squares — either horizontally, vertically or diagonally.

Each grid has:

AIRCRAFT CARRIER: 1

CRUISERS: 3

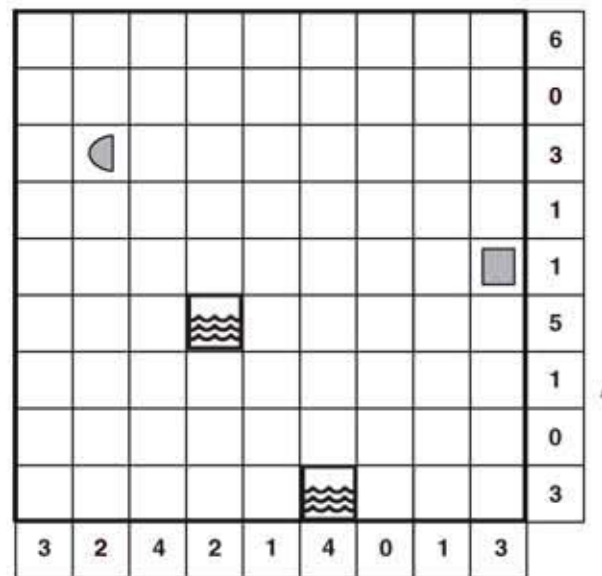


BATTLESHIPS: 2

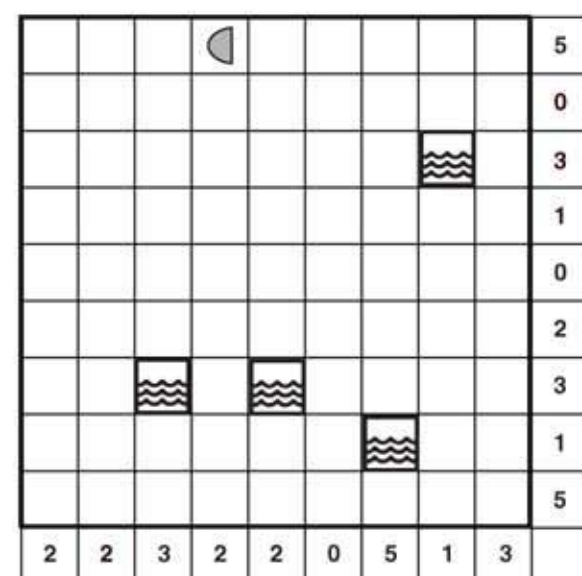
DESTROYERS: 4



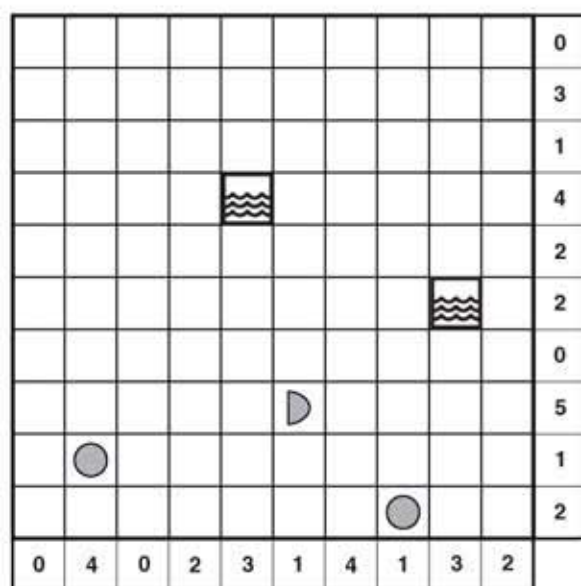
Number: 39



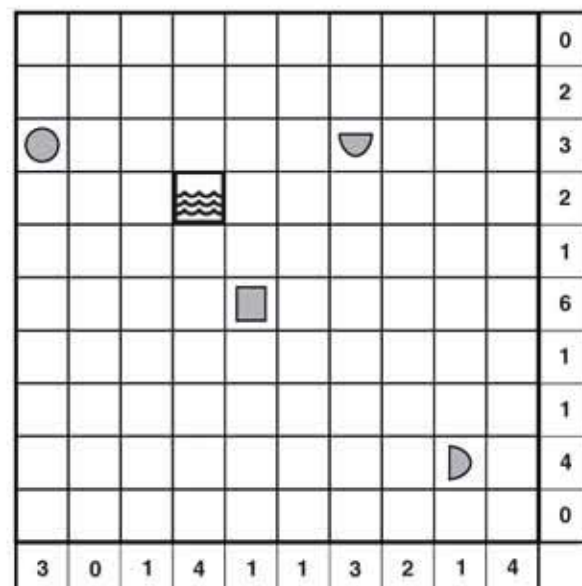
Number: 40



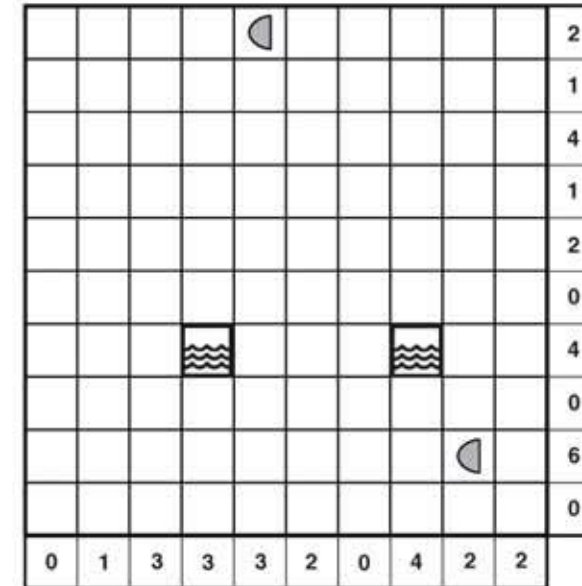
Number: 41



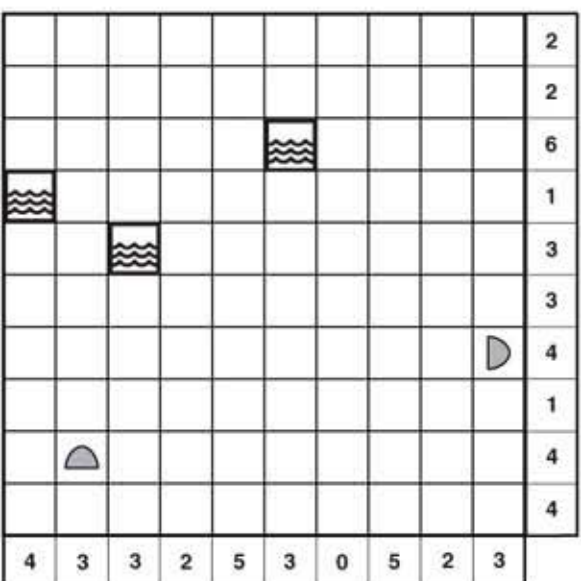
Number: 42



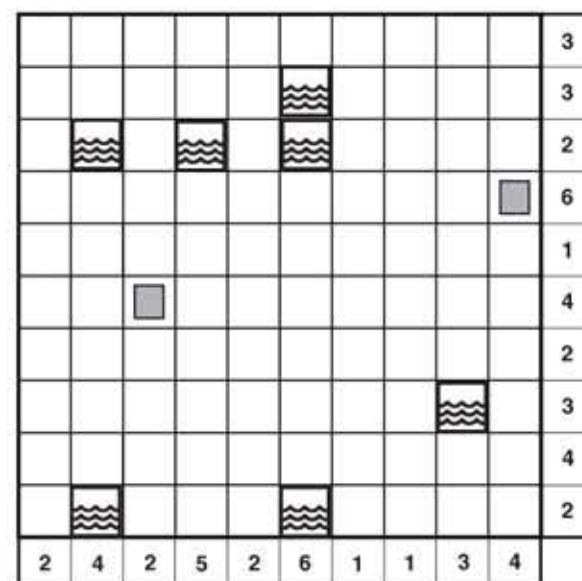
Number: 43



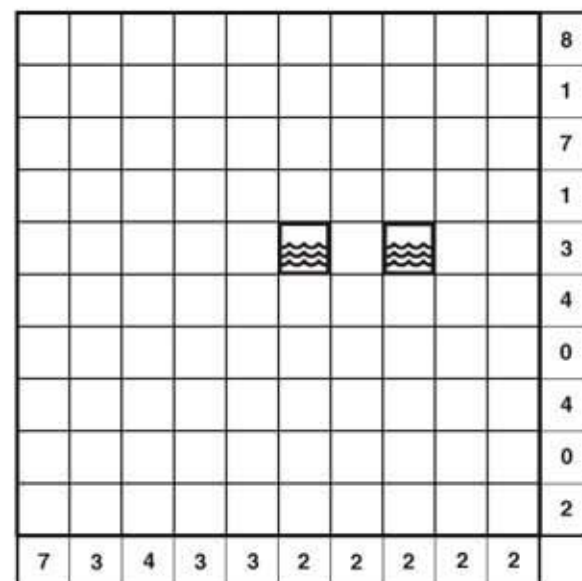
Number: 44



Number: 45



Number: 46



solutions

Polygon Number 1 abbreviate, aerie, aria, aviate, bait, barbie, barite, boira, bier, bite, biter, brass, bribe, irate, rabbi, rabbit, raita, reive, retie, rite, rive, rivet, tabi, terai, bara, tier, tire, tribe, vair, variate, vérite, vibe, vibrate

Number 2 ephor, hero, hoer, hoke, hope, hoper, hopper, horse, hose, hoser, kosher, pekoe, pepo, peso, poke, poker, pope, pore, pork, pose, poser, posh, prepose, prop, prose, repo, repose, rope, rose, shoe, shop, shopkeeper, shopper, shore, soke, sore, spoke, spore

Number 3 peer, peery, peewit, pére, peri, perry, pert, peter, petit, petite, petter, petty, pewit, pewter, pier, piety, pity, preterit, pretty, prey, preyer, pyre, pyrite, retype, ripe, trip, tripe, twerp, type, typewriter, weep, weepy, wipe, wiper

Number 4 inquisitor, nitrous, nous, nuts, nutso, onus, ours, oust, quin, quint, quirt, quit, quits, quoin, quoit, roust, rout, ruin, runt, rust, rutin, snout, sour, squint, squirt, squit, stour, sturn, suint, suit, sutor, torus, tour, turion, turn, unit, unto

Number 5 ding, dingo, dink, dirt, doing, dong, doting, gink, goon, hind, hint, hong, honk, hoon, ikon, ingot, into, kind, king, kinhood, kino, knight, kinhood, knit, knot, nigh, night, nook, oink, onto, thin, thing, think, thong, bgon, ting, tondo, tong, toon

Number 6 beef, beer, beet, beget, bereft, beret, berg, beset, best, brut, brute, buret, burg, burgee, burse, burst, bust, bustee, buster, feeb, grebe, grub, rebus, rebut, rube, stub, subterfuge, tube, tuber, urbs

Code words Number 7

Number 8

Number 9

Number 10

Number 11

Number 12

Number 13

Number 14

Classic Number 15

Number 16

Number 17

Number 18

Number 19

Number 20

Super fiendish Number 21

Number 22

Number 23

Number 24

Number 25

Number 26

Number 27

Number 28

Number 29

Killer Number 30

Number 31

Number 32

Number 33

Number 34

Number 35

Number 36

Number 37

Number 38

Number 39

Number 40

Number 41

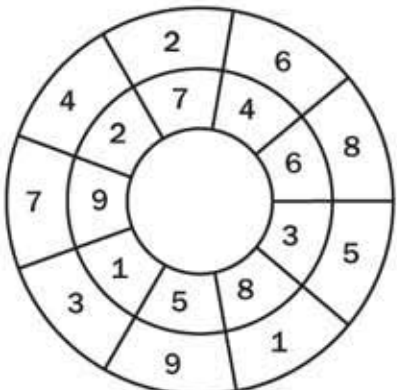
Number 42

Number 43

Number 44

Number 45

Number 46



Double ring Su Doku on cover supplied by Caroline Higgins
 Cover design: Nathalie Lees
 Codeword and Battleships: © Puzzler Media Ltd – www.puzzlermedia.com
 All Su Doku puzzles © www.sudokusolver.com
 Polygon supplied by Roger Phillips