



On Pins & Needles



Soft Baby Shoes

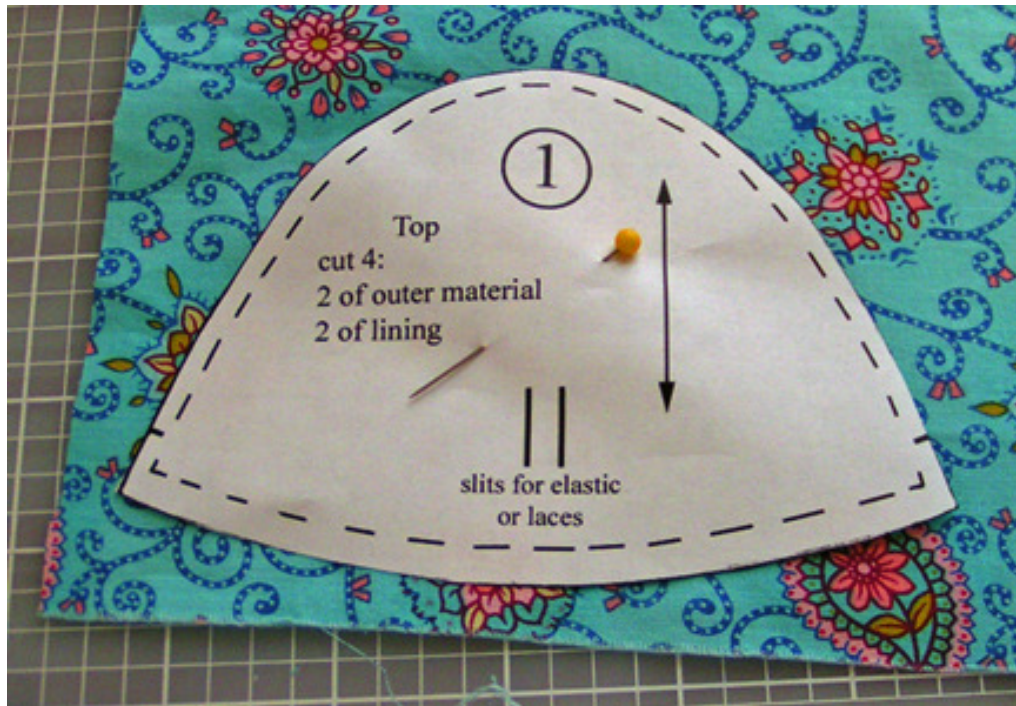
Pattern and Tutorial

<http://family-centered.com/needleworks/soft-baby-shoes/>
copyright © 2007 Michele M. Quigley | All Rights Reserved
For Personal Use Only

Materials needed:

- **Pattern** (included on the last page) The pattern when printed will make a shoe that fits approx. 6-9 months. To get a good fit measure the foot from toe to heel and compare it to the sole piece (#3) and adjust up or down as needed. *Remember that these are soft shoes that should be roomy in the toe area.
- **Fabric and/or Leather** - A piece of fabric 18" x 22" (commonly known as a Fat Quarter) is the perfect amount for this little shoe but even just scraps will do nicely. Mix and match however you'd like - there are no rules. The soles can be made with fabric or leather (I've done both). If you want leather you only need a small amount. Leather scraps can be found by checking thrift stores for old leather purses etc. Craft stores sell pieces of leather for about \$8. One piece would be plenty for two soles.
- **14 inches of 1/4 in.- wide elastic.**
- **Interfacing (optional)** -If you want a stiffer shoe you can fuse medium weight interfacing to the heel and top pieces.

Cut 4 pieces of the top (piece #1): 2 of the main material and 2 of the lining.

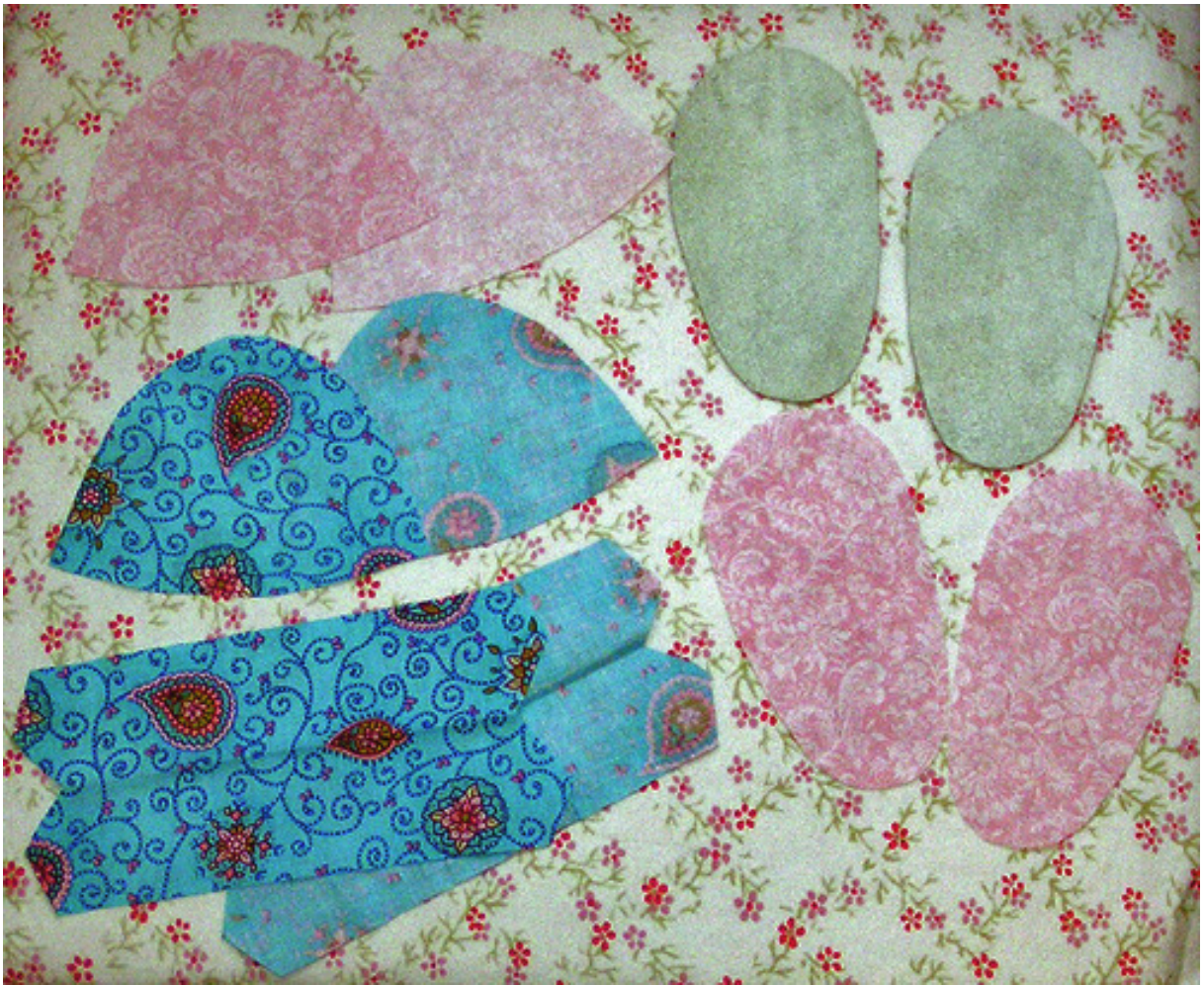


Cut 4 pieces of the sole (#3): in mirror images (right sides together) marking the left and right pieces of each.

Next, cut 2 pieces of the heel (#2): on the fold:



All your pieces cut out will look something like this:



Cut slits for elastic or laces in the 2 top lining pieces only.
OR, for a nicer finish, make buttonholes and then cut the slits.



Place each top lining piece on top of each top outer piece with right sides together.



Sew 1/4 inch seam across the curve of the top only.





Turn and press.





Sew side seams of heel piece at seam lines inside out.



turn right side out



Press



Sewing casing for elastic from point to point along the top of the heel.



Attach lining to outer sole material.

If using leather, quilt basting spray works well. * If using fabric for both lining and sole, baste.



**For best results use a leather needle when sewing with leather.*

Lay top piece on sole and match markings, follow with the heel piece and pin or clip (if using leather) in place.



Remember that you are assembling the shoe inside out. If you want the leather on the bottom of the shoe be sure it is on the inside - facing you when you put the shoe together.

Sew a 1/8 inch seam around the entire shoe.



Insert elastic into casing and through slits/buttonholes.



Tighten to desired size and secure with a hand stitching.



Turn the shoe right side out.



Roll the edges where the sole meets the shoe between your fingers to smooth it out.





That's it - you're done!

Embellish the shoes or leave them as is.



Soft Baby Shoe Pattern

