



**Ibanez®**  
**SIGNATURE & ARTCORE**  
*Full & Semi-Acoustic  
Electric Guitars*

**Ibanez®**

1726 Winchester Road, Bensalem, PA 19020  
327 Broadway, Idaho Falls, ID 83402  
\$3.00 in U.S.A. ©2009 Printed in the U.S.A. (25m)

Special Thanks to:  
Dan Electro's Guitar bar - [www.danelectroguitarbar.com](http://www.danelectroguitarbar.com)  
John Evans - [www.myspace.com/johnevsband](http://www.myspace.com/johnevsband)  
Kenyon White - [www.myspace.com/kenyonwhite](http://www.myspace.com/kenyonwhite)



[ibanez.com](http://ibanez.com)

## CONTENTS

- 4-5 George Benson Signature
- 6-7 Pat Metheny Signature
- 8-9 John Scofield Signature
- 10-11 Artcore Custom
- 12-15 AF, AFS & AK
- 16-17 AG & AGS
- 18-22 AS, AM & AJD
- 23 Neck Dim, Pickups  
Switching Systems,  
Hard Shell Cases  
& Finishes



**F**or more than three decades, Ibanez has been crafting and refining instruments for the likes of Jazz titans such as George Benson, Pat Metheny and John Scofield, as well as a new generation of improvisers such as Eric Krasno and UNAM. This experience has given Ibanez a special perspective on how to build jazz guitars that spans a broad range of shapes, styles, musical tastes...and how to build them affordably, without sacrificing tone, response or appearance.

When first released in 2002, unsuspecting players around the world were shocked by the artistry, the versatility, and accessibility associated with Artcore guitars. Never before had so much been factored into a jazz guitar at such an affordable price. The world was shocked once again in 2005 when Ibanez introduced Artcore Custom—a collection of ornately appointed guitars within the Artcore line that offer even more features and versatility than their predecessors.

For 2009, Ibanez once again showcases a variety of jazz guitars, each unique in its styling and sound. And while we hope this catalog will give you some idea of how you can expand your playing potential, we know you'll never really quite understand just how much until you actually play one of our guitars.

**DIG IN AND ENJOY.**



## FULL HOLLOWBODY *Construction*

All Ibanez full-hollow guitars are truly full-hollow construction for rich, complex tones. There are no soundblocks in the body as often found in "full-hollow" guitars in the Artcore price range. Full-hollows are most associated with traditional jazzers, but they have their more aggressive rockabilly and rock adherents who simply must have those full-hollow tones.



# GEORGE BENSON

*Signature Guitar*



## Beyond The Box

- Made in Japan by our most experienced luthiers, the GB10 is our longest running artist signature model.
- Floating pickups, thicker top, and a smaller acoustic body reject feedback.
- GB15TR adds single pickup configuration with coil tapping to the original GB10 design.
- GB200 features a full-acoustic body and standard pickup installation for more traditional jazz gigs.
- Deluxe hardshell case included. GB15 also includes deluxe gig bag.



### GB200BS

- 3pc Mahogany/ Maple GB Prestige set-in neck
- Spruce top, Maple back/sides
- Medium frets
- Super 58 neck pu
- Super 58 bridge pu
- Ebony bridge
- Max width at lower bout: 16 1/2"
- Max body thickness: 4 1/4"
- Finish: BS



### GB15TR

- 3pc Maple GB15 GB Prestige set-in neck
- Spruce top, Maple back/sides
- Medium frets
- GB Special neck pu
- Ebony bridge
- Max width at lower bout: 14 3/4"
- Max body thickness: 3 1/4"
- Finish: TR



### GB10BS

- 3pc Maple GB Prestige set-in neck
- Spruce top, Maple back/sides
- Medium frets
- GB Special neck pu
- GB Special bridge pu
- Ebony bridge
- Max width at lower bout: 14 3/4"
- Max body thickness: 3 1/4"
- Finishes: BS, NT



### GB10NT

- 3pc Maple GB Prestige set-in neck
- Spruce top, Maple back/sides
- Medium frets
- GB Special neck pu
- GB Special bridge pu
- Ebony bridge
- Max width at lower bout: 14 3/4"
- Max body thickness: 3 1/4"
- Finishes: BS, NT

George Benson's taste, tone, bluesy phrasing and incomparable sense of swing has ensured his place in the history of jazz guitar. Ibanez is extremely proud of our long and fruitful relationship, now celebrating over 30 years of collaboration. The GB models are some of the finest jazz guitars on the market today.

Floating pickups on the GB10 eliminate feedback.



*PM*



# PAT METHENY

*Signature Guitar*



### PM120NT

- Mahogany PM Prestige set-in neck
- Maple top/back/sides
- Medium frets
- Silent 58 neck pu
- Silent 58 bridge pu
- GB103B bridge
- Max width at lower bout: 16"
- Max body thickness: 3 1/4"
- Finishes: BK, NT

### PM100BK

- Mahogany PM Prestige set-in neck
- Maple top/back/sides
- Medium frets
- Super 58 neck pu
- GB103B bridge
- Max width at lower bout: 16"
- Max body thickness: 3 7/8"
- Finish: BK

### PM35NT

- 5pc Maple/ Walnut PM Custom set-in neck
- Maple top/back/sides
- Medium frets
- Custom 58 neck pu
- ART1 Bridge
- Max width at lower bout: 15 3/4"
- Max body thickness: 3 5/8"
- Finish: NT

PM35NT's 5pc maple/bubinga PM set-in neck.



Intro

## Beyond The Box

- The PM100 and PM120 are made in Japan by our most experienced luthiers.
- The size of the traditional jazz guitar but slimmer for better comfort projection and feedback rejection.
- Body joint at the 17th fret for easier fret access than traditional jazz boxes (PM100/120).
- The PM120 features extra quiet Silent 58 pickups and an even slimmer body than the PM100 (3 1/4" vs. 3 7/8") for enhanced midrange punch.
- PM35NT, the most affordable model, features a specially treated neck and frets designed to Pat Metheny's exacting specifications.
- Deluxe hardshell case included.

*An Ibanez Signature artist since 1996, Pat's adventurous forays into jazz, pop, folk and Latin music have enthralled audiences all over the world. At the core of these journeys are, of course, Pat's sumptuous guitar playing and his Ibanez Signature instruments.*





# JOHN SCOFIELD

*Signature Guitar*

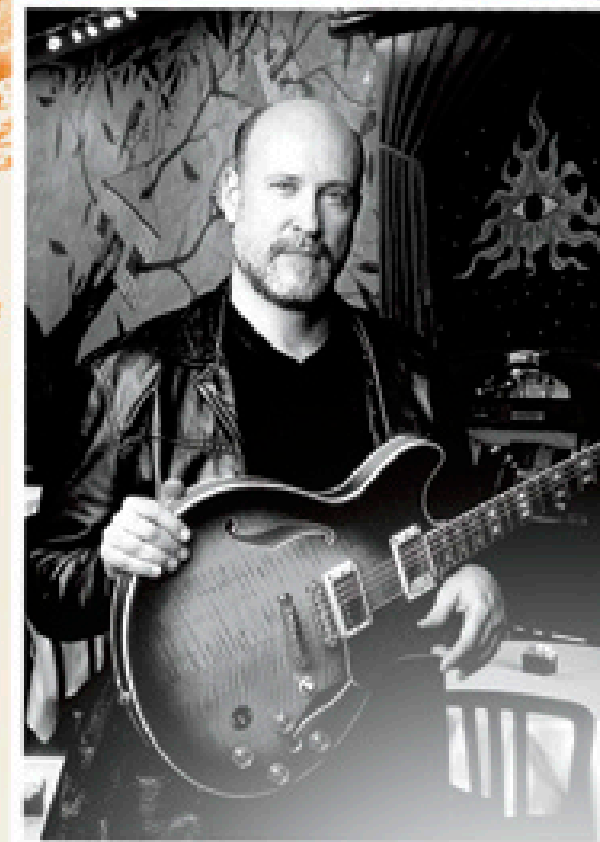
## Beyond The Box

- The JSM100VT is made in Japan by our most experienced luthiers.
- Faithful digitized reproduction of the body and neck of John's original Ibanez AS200AV.
- Substantial soundblock and a rigid top and body reject feedback.
- Compound radius fretboard for more accurate intonation.
- Super 58 pickups produce a classic, warm and versatile tone perfect for all genres.
- Deluxe hardshell case included.

Classic Ibanez half-bone, half-brass nut on the magical JSM100 provides a balance of highs and lows.

## JSM100VT

- Mahogany JSM Prestige set-in neck
- Flamed Maple top/back/sides
- Medium frets
- Super 58 neck pu
- Super 58 bridge pu
- G510BN bridge
- Max width at lower bout: 15 3/4"
- Max body thickness: 2 3/8"
- Finish: VT



*G*uitarist John Scofield has blazed a fearless trail, moving effortlessly in and out of bop, fusion, rock, funk, blues and soul. Since becoming an Ibanez Signature artist in 2001, John's trusted JSM100 has been at the ready, waiting for the next adventurous musical turn in the road.



# AF

large, true  
full-hollow

## Beyond The Box

- Traditional large jazz box with 22 instead of 20 frets.
- All Ibanez full-hollow guitars are truly full-hollow for full, traditional tones. There are no soundblocks as found in some "full-hollow" boxes.
- Two distinct versions: Traditional standard bridge models for jazz. Trem models for rockabilly and roadhouse twang.
- Roller saddles on the AF75T's VBF70 Vintage Vibrato (licensed by Fred Gretsch Enterprises in the U.S) eliminate the tuning problems of traditional systems.



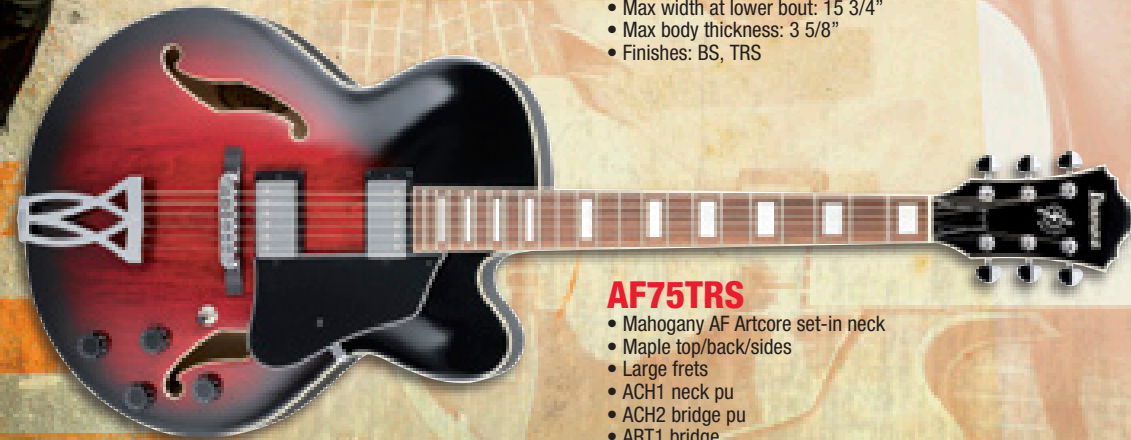
### AF95TK

- 3pc Maple/ Mahogany AF Artcore DX set-in neck
- Flamed Maple top/back/sides
- Large frets
- ACH1 neck pu
- ACH2 bridge pu
- ART1 bridge
- Max width at lower bout: 15 3/4"
- Max body thickness: 3 5/8"
- Finish: TK



### AF75BS

- Mahogany AF Artcore set-in neck
- Maple top/back/sides
- Large frets
- ACH1 neck pu
- ACH2 bridge pu
- ART1 bridge
- Max width at lower bout: 15 3/4"
- Max body thickness: 3 5/8"
- Finishes: BS, TRS



### AF75TRS

- Mahogany AF Artcore set-in neck
- Maple top/back/sides
- Large frets
- ACH1 neck pu
- ACH2 bridge pu
- ART1 bridge
- Max width at lower bout: 15 3/4"
- Max body thickness: 3 5/8"
- Finishes: BS, TRS

The AF series is one of our most traditional full-acoustic lines with a large, true full-hollow body and Ibanez ACH pickups for smooth, classic tones. From classic jazz to twanged-out rockabilly styles, the AF has the sound you need.



The AF75TDG's Vintage Vibrato summons all your favorite hard-edged twang riffs as well as sensitive, jazzy tremolo shivers.



### AF75DTOR

- Mahogany AF Artcore set-in neck
- Maple top/back/sides
- Large frets
- ACH1 neck pu
- ACH2 bridge pu
- ART1 bridge
- Max width at lower bout: 15 3/4"
- Max body thickness: 3 5/8"
- Finish: TOR



### AF75TDGBK

- Mahogany AF Artcore set-in neck
- Maple top/back/sides
- Large frets
- ACH1 neck pu
- ACH2 bridge pu
- ART2 with VBF70 Vintage Vibrato
- Max width at lower bout: 15 3/4"
- Max Body Thickness: 3 5/8"
- Finish: BK, IV



### AF75TDGIV

- Mahogany AF Artcore set-in neck
- Maple top/back/sides
- Large frets
- ACH1 neck pu
- ACH2 bridge pu
- ART2 with VBF70 Vintage Vibrato
- Max width at lower bout: 15 3/4"
- Max Body Thickness: 3 5/8"
- Finish: BK, IV

CHRIS CAMOZZI



# ARTCORE

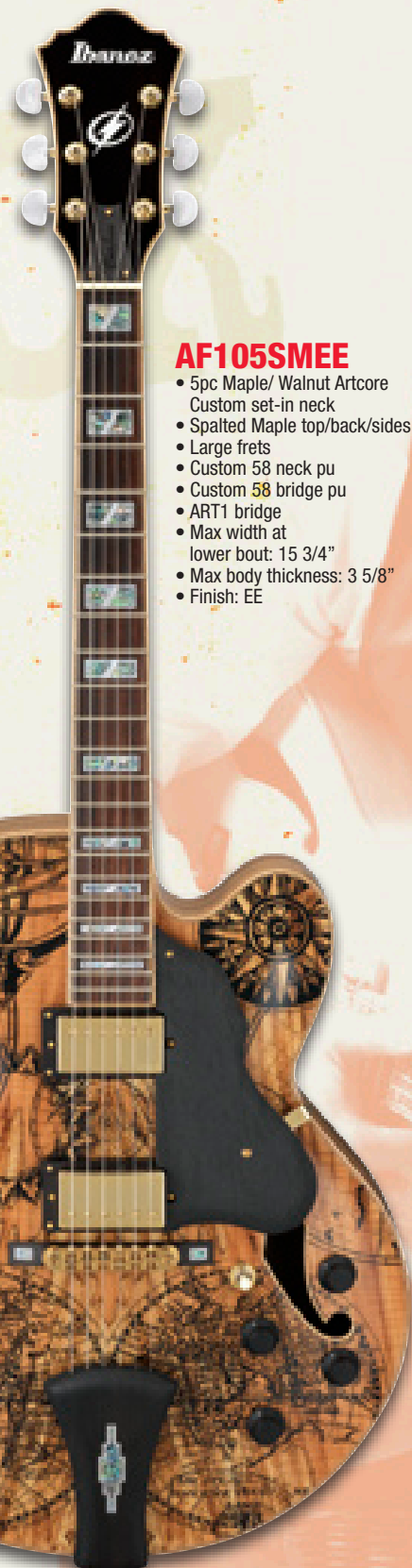
## Custom

### Beyond The Box

- The looks, the sound, and the construction that rival jazz boxes of many times the price.
- AF models offer traditional full-hollow construction. AS103 offers semi-hollow body for feedback resistance and sustain.
- The acclaimed comfort of Ibanez Artcore Custom's strong and stable 5pc maple/walnut necks is the result of extra neck treatments and finishing.
- Wood control knobs and wood tailpieces enhance the exquisite appearance of the Artcore Custom line-up.
- Deluxe hardshell case included.



As the Exotic Explorer graphic on the AF105MEE suggests, Artcore Custom guitars will lead you to exciting, uncharted musical territories.



#### AF105MEE

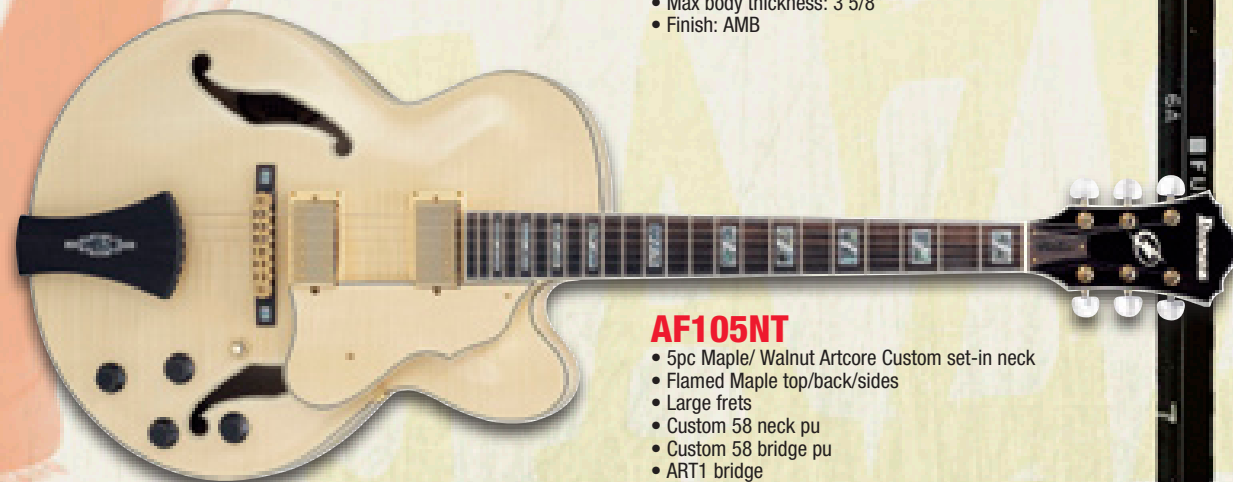
- 5pc Maple/ Walnut Artcore Custom set-in neck
- Spalted Maple top/back/sides
- Large frets
- Custom 58 neck pu
- Custom 58 bridge pu
- ART1 bridge
- Max width at lower bout: 15 3/4"
- Max body thickness: 3 5/8"
- Finish: EE

When the smoke had cleared in 2002, players, music store owners and the music industry press were stunned by the debut of the beautiful yet affordable Artcores. And in 2005, when Ibanez lifted the curtain on the exquisite Artcore Customs, shock turned to disbelief. How could such fine instruments be produced at such approachable prices?



#### AF125AMB

- 5pc Maple/ Walnut Artcore Custom set-in neck
- Quilted Maple top/back/sides
- Large frets
- Super 58 neck pu
- Super 58 bridge pu
- ART1 Bridge
- Max width at lower bout: 15 3/4"
- Max body thickness: 3 5/8"
- Finish: AMB



#### AF105NT

- 5pc Maple/ Walnut Artcore Custom set-in neck
- Flamed Maple top/back/sides
- Large frets
- Custom 58 neck pu
- Custom 58 bridge pu
- ART1 bridge
- Max width at lower bout: 15 3/4"
- Max body thickness: 3 5/8"
- Finish: NT



#### AS103NT

- 5pc Maple/ Walnut Artcore Custom set-in neck
- Flamed Maple top/back/sides
- Large frets
- Custom 58 neck pu
- Custom 58 bridge pu
- ART1 bridge
- Max width at lower bout: 15 7/8"
- Max body thickness: 2 5/8"
- Finish: NT

**U-NAM**

U-NAM Photo by Bettie Grace Miner



# AFS

*thinner, true  
full-hollow*

## Beyond The Box

- True-full hollow body construction.
- The same body width as the Artcore AF, but one inch thinner for increased comfort and more midrange punch.
- Ibanez Vintage Vibrato (licensed by Fred Gretsch Enterprises in the U.S.) with roller saddles eliminates the tuning problems of traditional systems.
- New 2009 AFS75TNWB with Neo Western graphic on black visually augments the roadhouse tonal vibe.



AFS75TNWB  
Neo-Western  
graphic guitar.



### AFS75TNWB

- Mahogany Artcore set-in neck
- Maple top/back/sides
- Large frets
- ACH1 neck pu
- ACH2 bridge pu
- ART2 with VBF70 Vintage Vibrato
- Max width at lower bout: 15 3/4"
- Max body thickness: 2 5/8"
- Finish: NWB



### AFS75TTRD

- Mahogany Artcore set-in neck
- Maple top/back/sides
- Large frets
- ACH1 neck pu
- ACH2 bridge pu
- ART2 with VBF70 Vintage Vibrato
- Max width at lower bout: 15 3/4"
- Max body thickness: 2 5/8"
- Finish: TRD

Traditions are made to be improved upon. Ibanez's AFS Series starts with the large body width of the AF series, but utilizes a one-inch thinner depth for increased comfort and more mid-range punch. Smoky jazz, retro twang, rocking blues and swinging country: it's all inside these finely-appointed instruments.



### AK95DHS

- 3pc Maple/ Mahogany Artcore DX set-in neck
- Spruce top, Flamed Maple back/sides
- Large frets
- ACH1 neck pu
- ACH2 bridge pu
- Rosewood bridge
- Max width at lower bout: 15 3/4"
- Max body thickness: 3 5/8"
- Finish: DHS

# AK

*traditional  
full-hollow*

The large-bodied jazz guitars reveal the love and craftsmanship of the old masters. The true full hollow AK continues this artisan tradition with respect and detail. The AK95 features a spruce top and all-wood bridge for the warmer sound favored in small group and jazz trio formats.



# AG

*smaller full-hollow*

## *Beyond The Box:*

- Traditional full hollow construction, but in a more compact and comfortable size.
- Two distinct versions: AG95D Ultra-Deluxe and AG75 working player standard.



### **AG95DBS**

- 3pc Maple/ Mahogany Artcore DX set-in neck
- Figured Bubinga top/back/sides
- Large frets
- ACH1 neck pu
- ACH2 bridge pu
- ART1 bridge
- Max width at lower bout: 15 3/4"
- Max body thickness: 3 5/8"
- Finish: DBS



### **AG75BS**

- Mahogany Artcore set-in neck
- Maple top/back/sides
- Large frets
- ACH1 neck pu
- ACH2 bridge pu
- ART1 bridge
- Max width at lower bout: 15 3/4"
- Max body thickness: 3 5/8"
- Finish: BS

Ibanez's AG Series takes classic shapes and superior hollowbody construction and creates a smaller, but no less potent instrument, capable of summoning both the tones of yesteryear and the modern textures that all guitarists want in their toolshed. Our AG95, with its figured Bubinga top, back and sides, is comfortable to play and elegantly-appointed with a wood tailpiece and powerful ACH pickups.

# AGS

*smaller semi-hollow*

## *Beyond The Box:*

- Semi-acoustic construction features a soundblock that rejects feedback and increases sustain.
- Superior upper-fret access.
- Quik Change tailpiece offers easy string-changes.

The AGS ("S" as in semi-hollow) features the same basic shape as the AG series, but adds a soundblock that rejects feedback without impeding the AGS's full and luxurious sustain. A 17th fret to the body joint allows easy access to the upper frets. The AGS83 has the classic beauty of flamed maple top, back and sides and the modern stability of a 3pc maple/mahogany Artcore DX set-in neck.



### **AGS83BATF**

- 3pc Maple/ Mahogany Artcore DX set-in neck
- Flamed Maple top/back/sides
- Large frets
- ACH1 neck pu
- ACH2 bridge pu
- ART1 bridge
- Max width at lower bout: 15 3/4"
- Max body thickness: 2 5/8"
- Finish: ATF



## **SEMI HOLLOWBODY** *Construction*

Semi-acoustic construction features a block of wood (called a sustain block or sound block) into which the pickups are mounted for increased sustain and feedback elimination. This design gives semi-acoustic guitars extraordinary versatility, which explains their popularity in rock, jazz and many other genres.

# AS

*traditional  
semi-acoustic*

## Beyond The Box

- The classic semi-acoustic size and sound.
- New 2009 AS73IV offers the Ivory finish, one of the most demanded finishes for semi-acoustics.
- Quik Change tailpiece offers easy string-changes.
- New left-handed AS73TCRL model.

The AS is one of the most versatile electric guitars made and can be found in every genre of popular music from jazz to rock and pop to punk. The AS's semi-acoustic construction allows for high-volume playing without feedback, at no expense to the rich tone of the woods and ACH pickups.



Classic gold hardware and Blue Sunburst finish make for a stunning combination.



### AS93BLS

- 3pc Maple/ Mahogany AS Artcore set-in neck
- Flamed Maple top/back/sides
- Large frets
- ACH1 neck pu
- ACH2 bridge pu
- ART1 bridge
- Max width at lower bout: 15 7/8"
- Max body thickness: 2 5/8"
- Finish: BLS



### AS73IV

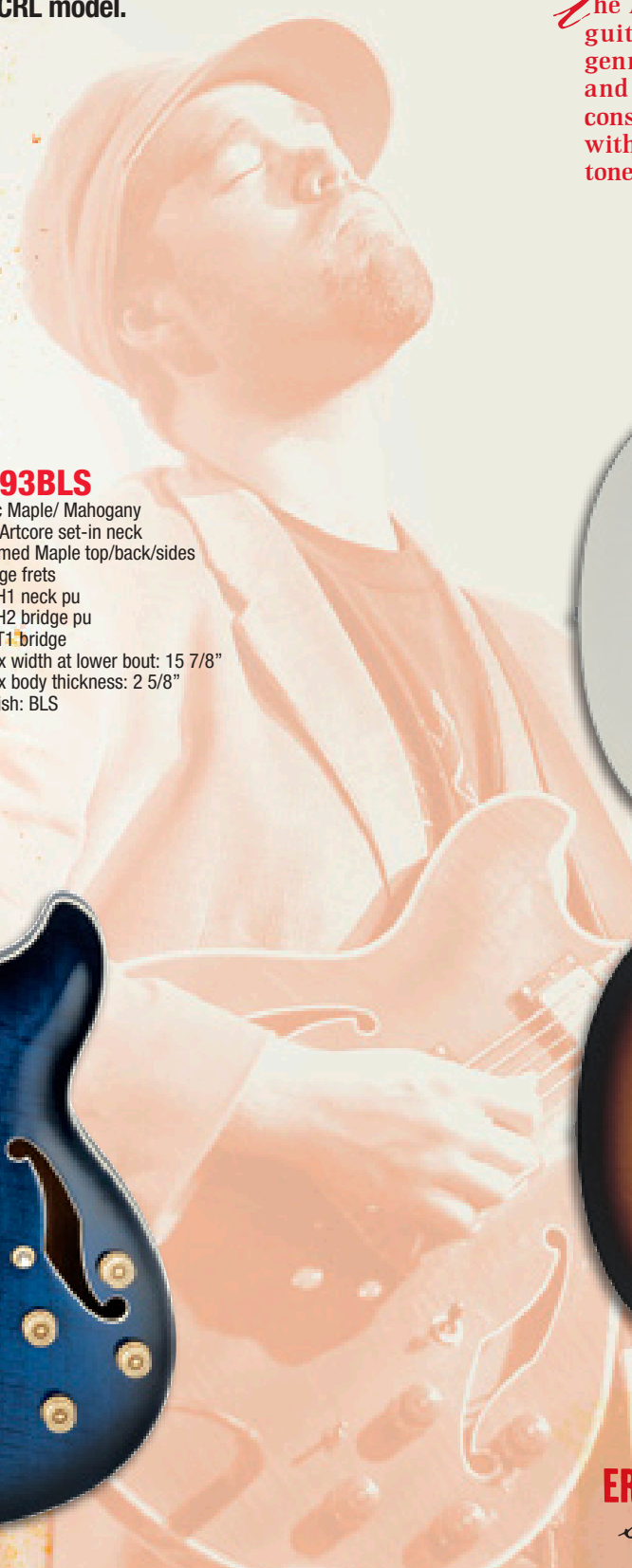
- Mahogany AS Artcore set-in neck
- Maple top/back/sides
- Large frets
- ACH1 neck pu
- ACH2 bridge pu
- ART1 bridge
- Max width at lower bout: 15 7/8"
- Max body thickness: 2 5/8"
- Finishes: IV, BS, TCR



### AS73BS

- Mahogany AS Artcore set-in neck
- Maple top/back/sides
- Large frets
- ACH1 neck pu
- ACH2 bridge pu
- ART1 bridge
- Max width at lower bout: 15 7/8"
- Max body thickness: 2 5/8"
- Finishes: IV, BS, TCR

**ERIC KRASNO**  
*soulive*





# AS

*traditional  
semi-acoustic*



## AS73TCR

- Mahogany AS Artcore set-in neck
- Maple top/back/sides
- Large frets
- ACH1 neck pu
- ACH2 bridge pu
- ART1 bridge
- Max width at lower bout: 15 7/8"
- Max body thickness: 2 5/8"
- Finishes: IV, BS, TCR



## AS73TCRL

- Mahogany AS Artcore set-in neck
- Maple top/back/sides
- Large frets
- ACH1-S neck pu
- ACH2-S bridge pu
- ART1 bridge
- Max width at lower bout: 15 7/8"
- Max body thickness: 2 5/8"
- Finish: TCR



## AS73BBKF

- Mahogany AS Artcore set-in neck
- Maple top/back/sides
- Large frets
- ACH1-S neck pu
- ACH2-S bridge pu
- ART1 bridge
- Max width at lower bout: 15 7/8"
- Max body thickness: 2 5/8"
- Finish: BKF

**MIKE DEWOLF**  
*taproot*

# AM

*compact  
semi-acoustic*



## AM73BBKF

- Mahogany AM Artcore set-in neck
- Maple top/back/sides
- Large frets
- ACH1-S neck pu
- ACH2-S bridge pu
- ART1 Bridge
- Max width at lower bout: 14 3/4"
- Max body thickness: 2 5/8"
- Finish: BKF

## Beyond The Box

- The full tone, strong sustain, lightweight body and feedback resistance of a semi-acoustic in an original Ibanez compact design.
- Double cutaway offers effortless upper fret access.
- Quik Change tailpiece offers easy string-changes.



*Don't* be fooled by its smaller size—the AM model has all the power, presence and features of its larger cousins. It's perfect for smaller players or anyone else who wants the traditional semi-acoustic elements but not the traditional size.

1pc mahogany AM set-in neck and multiple binding creates a clean, classic and streamlined look.

# AJD

rock semi-acoustic

## Beyond The Box

- The full tones, strong sustain, and light weight of a semi-acoustic.
- The comfortable size and stand out rock shape normally associated with a solid-body.
- Designed for easier access to the upper frets.

Beautiful flamed maple top and Quik Change Ultra tailpiece.



### AJD91VLS

- 3pc Maple/Mahogany AJD set-in neck
- Flame Maple top, Maple back/sides
- Large frets
- ACH1 neck pu
- ACH2 bridge pu
- ART1 Bridge
- Max width at lower bout: 13"
- Max body thickness: 1 3/4"
- Finish: VLS

The AJD is a relative of the big jazz guitar, but is neither big nor boxy. It is, however, an unbeatable and ingenious combination of features: solid-body electric guitar profile and set-in neck, but with a semi-hollow's tone.

## NECK DIMENSIONS

NECK MODEL	SCALE LENGTH	WIDTH AT NUT	WIDTH AT LAST FRET	THICKNESS AT 1ST FRET	THICKNESS AT 12TH FRET	RADIUS
<b>GUITAR NECK DIMENSIONS</b>						
ARTCORE (AF/AFS/AG/AK)	628mm/24.75"	43mm	58.5mm	20mm	26.5mm	305mm
ARTCORE (AGS/AM/AS/AJD)	628mm/24.75"	43mm	58.5mm	20mm	22.5mm	305mm
GB	628mm/24.75"	43mm	57mm	20mm	23mm	305mm
GB15	628mm/24.75"	44mm	58mm	20mm	23mm	305mm
JSM	628mm/24.75"	43.5mm	57mm	20.2mm	23.3mm	COMPOUND
PM	628mm/24.75"	43mm	57mm	21mm	23mm	305mm
PM35	648mm/24.75"	43mm	57mm	20mm	26.5mm	305mm

## PICKUPS

MODEL NO.	NAME	RECOMM. POSITION	CONSTRUCTION	MAGNET	DESCRIPTION
<b>IBANEZ GUITAR PICKUPS</b>					
ACH1	ARTCORE 1	N	H	C	Clean sounding with a slight overdrive.
ACH2	ARTCORE 2	B	H	C	Bridge version of ACH1.
GB SPECIAL	GB SPECIAL	B	H	AL	Floating pickup co-designed by George Benson for hollow bodies at higher volumes. Warm, well rounded output with less feedback.
GB SPECIAL	GB SPECIAL	N	H	AL	Neck version of above.
S58	SUPER 58	ALL	H	AL	Classic, warm and versatile. Handles both jazz and rock without feedback.
SL58	SILENT 58	ALL	H	AL	Classic, warm and versatile. Handles both jazz and rock without feedback.
C58	CUSTOM 58	N/B	H	C	Classic, warm and versatile

(B) BRIDGE, (M) MIDDLE, (N) NECK, (H) HUMBUCKING, (S) SINGLE COIL, (AL) ALNICO, (C) CERAMIC

## SWITCHING SYSTEM

Two Humbucker Pickup Models



## HARD SHELL CASES

CASE ITEM #	MODELS
AF100C	AF, AK
AF200C	AF, AK
AG100C	AG
AGS100C	AGS
AM100C	AM
AS100C	AS, AFS
AS200C	AS, AFS
TM100C	AJD
GB100C	AG, GB



## FINISHES

