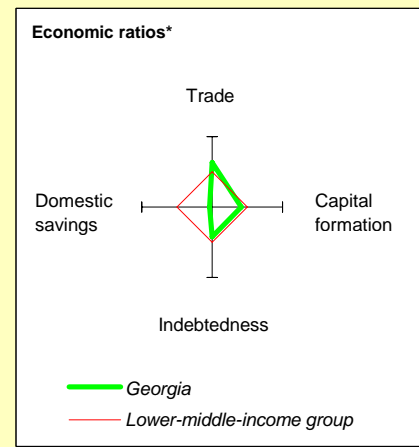
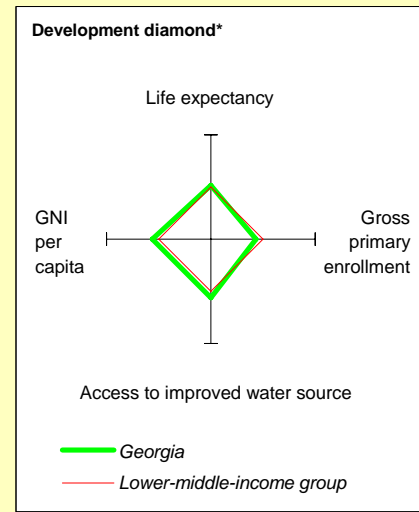


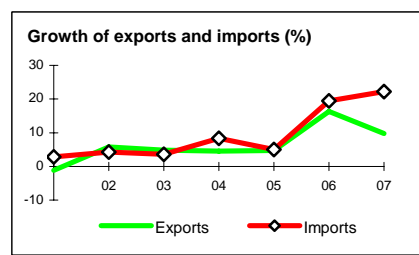
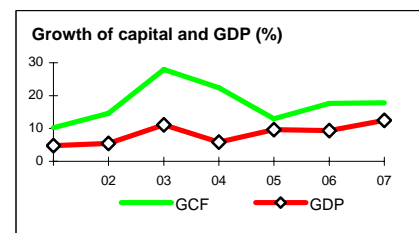
Georgia at a glance

9/24/08

	Georgia	Europe & Central Asia	Lower-middle-income		
POVERTY and SOCIAL					
2007					
Population, mid-year (millions)	4.4	445	3,437		
GNI per capita (Atlas method, US\$)	2,120	6,052	1,887		
GNI (Atlas method, US\$ billions)	9.3	2,694	6,485		
Average annual growth, 2001-07					
Population (%)	-1.0	0.0	1.1		
Labor force (%)	-1.7	0.5	1.5		
Most recent estimate (latest year available, 2001-07)					
Poverty (% of population below national poverty line)	55		
Urban population (% of total population)	53	64	42		
Life expectancy at birth (years)	71	69	69		
Infant mortality (per 1,000 live births)	28	23	41		
Child malnutrition (% of children under 5)	25		
Access to an improved water source (% of population)	99	95	88		
Literacy (% of population age 15+)	..	97	89		
Gross primary enrollment (% of school-age population)	96	97	111		
Male	94	98	112		
Female	97	96	109		
KEY ECONOMIC RATIOS and LONG-TERM TRENDS					
	1987	1997	2006	2007	
GDP (US\$ billions)	..	3.5	7.7	10.2	
Gross capital formation/GDP	28.6	17.8	26.7	29.0	
Exports of goods and services/GDP	41.6	15.6	32.9	31.5	
Gross domestic savings/GDP	29.7	-8.7	2.5	2.8	
Gross national savings/GDP	..	0.8	13.0	12.0	
Current account balance/GDP	..	-10.4	-13.5	-13.9	
Interest payments/GDP	..	1.0	0.4	..	
Total debt/GDP	..	41.3	25.4	..	
Total debt service/exports	..	5.4	7.1	..	
Present value of debt/GDP	18.4	..	
Present value of debt/exports	37.5	..	
	1987-97	1997-07	2006	2007	2007-11
<i>(average annual growth)</i>					
GDP	-16.3	6.5	9.4	12.4	7.3
GDP per capita	-15.3	7.7	10.4	13.4	6.8
Exports of goods and services	..	8.1	16.3	9.8	5.9



	1987	1997	2006	2007
STRUCTURE of the ECONOMY				
<i>(% of GDP)</i>				
Agriculture	24.2	29.2	12.8	10.9
Industry	38.0	23.6	24.9	24.1
Manufacturing	..	16.1	12.7	12.3
Services	37.8	47.1	62.3	65.0
Household final consumption expenditure	56.9	98.5	82.1	75.3
General gov't final consumption expenditure	13.4	10.2	15.3	21.9
Imports of goods and services	40.4	42.1	57.0	57.7
	1987-97	1997-07	2006	2007
<i>(average annual growth)</i>				
Agriculture	-14.2	0.6	-9.3	4.0
Industry	-21.1	9.1	14.5	5.0
Manufacturing	..	5.8	17.0	5.0
Services	-9.0	7.9	15.4	8.3
Household final consumption expenditure	..	5.2	12.3	21.6
General gov't final consumption expenditure	..	0.7	30.9	28.7
Gross capital formation	-26.8	10.5	17.7	17.9
Imports of goods and services	..	5.4	19.5	22.2



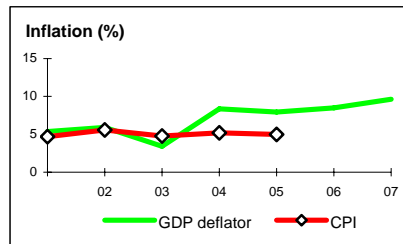
Note: 2007 data are preliminary estimates.

This table was produced from the Development Economics LDB database.

* The diamonds show four key indicators in the country (in bold) compared with its income-group average. If data are missing, the diamond will be incomplete.

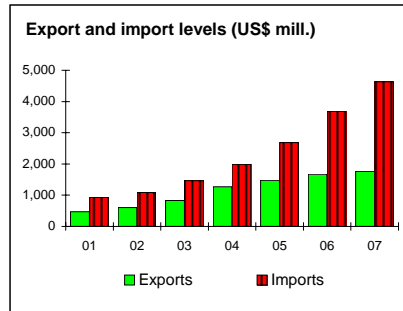
PRICES and GOVERNMENT FINANCE

	1987	1997	2006	2007
Domestic prices				
<i>(% change)</i>				
Consumer prices	..	7.1
Implicit GDP deflator	2.3	6.5	8.5	9.6
Government finance				
<i>(% of GDP, includes current grants)</i>				
Current revenue
Current budget balance	..	-1.9	2.4	3.6
Overall surplus/deficit	..	-4.4	-2.9	-2.6



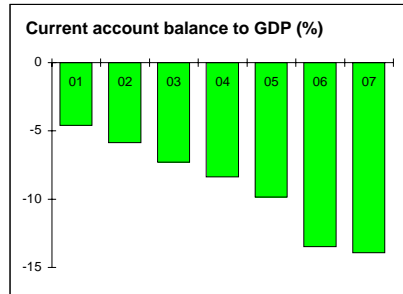
TRADE

	1987	1997	2006	2007
<i>(US\$ millions)</i>				
Total exports (fob)	..	493	1,667	1,760
Aircraft, spacecraft and parts thereof (HS88)	..	1	277	304
Beverages, spirits and vinegar (HS 22)	..	46	201	217
Manufactures	..	355	351	328
Total imports (cif)	..	1,052	3,686	4,634
Food	..	318	518	636
Fuel and energy	..	266	883	1,138
Capital goods	..	73	779	1,059
Export price index (2000=100)	..	111	212	214
Import price index (2000=100)	..	109	206	212
Terms of trade (2000=100)	..	101	103	101



BALANCE of PAYMENTS

	1987	1997	2006	2007
<i>(US\$ millions)</i>				
Exports of goods and services	..	661	3,311	3,934
Imports of goods and services	..	1,368	4,727	5,748
Resource balance	..	-707	-1,416	-1,813
Net income	..	139	-266	-318
Net current transfers	..	204	638	713
Current account balance	..	-364	-1,044	-1,418
Financing items (net)	..	303	1,451	2,071
Changes in net reserves	..	61	-407	-653
Memo:				
Reserves including gold (US\$ millions)	..	174	883	1,497
Conversion rate (DEC, local/US\$)	..	1.3	1.8	1.7



EXTERNAL DEBT and RESOURCE FLOWS

	1987	1997	2006	2007
<i>(US\$ millions)</i>				
Total debt outstanding and disbursed	..	1,450	1,964	..
IBRD	..	0	0	0
IDA	..	212	785	885
Total debt service	..	46	268	..
IBRD	..	0	0	0
IDA	..	1	10	13
Composition of net resource flows				
Official grants	..	53	147	..
Official creditors	..	94	-26	..
Private creditors	..	0	37	..
Foreign direct investment (net inflows)	..	243	1,060	..
Portfolio equity (net inflows)	..	2	118	..
World Bank program				
Commitments	..	155	58	55
Disbursements	..	64	76	72
Principal repayments	..	0	4	7
Net flows	..	64	72	65
Interest payments	..	1	6	6
Net transfers	..	63	67	59

