

14 December 2007

Coverage
United Kingdom
Theme
Economy

Regional, sub-regional and local gross value added

Regional GVA (NUTS1)

In 2006, London's gross value added (GVA) per head of population was 41 per cent above the average for the United Kingdom (UK) while that of Wales was 23 per cent below, calculated on a residence basis. The 2006 headline estimates also show total GVA, before allowing for inflation, has been increasing in all UK regions.

Overall UK (excluding the statistical discrepancy and Extra-Regio) growth in 2006 was 5.1 per cent. The highest growths were in London (5.7 per cent), Northern Ireland (5.6 per cent) and the North East (5.5 per cent). The lowest growth was in the North West (4.5 per cent).

The NUTS1 figures for the nine English government office regions and devolved countries of the UK are given in the table below.

NUTS1 Regional GVA^{1,2} 2006³

Region	Total (£bn)	Share of UK (%)	Growth on 2005 (%)	Per head (£)	Per head index (UK=100)
United Kingdom⁴	1,128.8	100.0	5.1	18 631	100
North East	38.8	3.4	5.5	15 177	81
North West	111.3	9.9	4.5	16 234	87
Yorkshire and The Humber	82.1	7.3	4.6	15 968	86
East Midlands	74.1	6.6	5.0	16 982	91
West Midlands	89.0	7.9	5.0	16 583	89
East of England	109.9	9.7	4.7	19 599	105
London	196.8	17.4	5.7	26 192	141
South East	177.2	15.7	5.1	21 514	115
South West	89.5	7.9	5.4	17 467	94
England	968.6	85.8	5.1	19 082	102
Wales	42.7	3.8	4.9	14 396	77
Scotland	91.0	8.1	5.4	17 789	95
Northern Ireland	26.4	2.3	5.6	15 175	81

Issued by National Statistics
1 Drummond Gate
London SW1V 2QQ

Telephone
Press Office 020 7533 5725
Public Enquiries 0845 601 3034

Statistician
Pete Lee
020 7533 5048
Email
pete.lee@ons.gov.uk

Internet
www.statistics.gov.uk

Next publication date
December 2008

1 GVA at current basic prices on residence basis.

2 Figures may not sum due to rounding in totals, per head (£) figures are rounded to the nearest pound.

3 2005 and 2006 estimates are provisional.

4 Excluding statistical discrepancy and Extra-Regio (off-shore contribution to GVA that cannot be assigned to any region).

Sub-regional GVA (NUTS2)

Inner London had the largest GVA per head on a workplace basis (£44,982) for 2005, the latest year for which estimates are available, within the 37 NUTS2 areas of the United Kingdom (mainly groups of counties); Cornwall and the Isles of Scilly had the lowest (£11,510). These figures compare to the UK average (excluding Extra-Regio) of £17,827.

NUTS2 Regions: Top five and bottom five GVA^{1,2} per head, 2005⁴

Region	Share of UK (%)	Growth on 2004 (%)	Per head (£) ³	Per head index (UK=100)
United Kingdom	100.0	4.1	17 827	100
Top five GVA per head				
Inner London	12.3	5.5	44 982	252
Berkshire, Bucks & Oxon.	5.0	4.3	25 213	141
North Eastern Scotland	1.0	3.6	22 315	125
Gloucester-, Wiltshire & North Somerset	4.2	3.9	20 295	114
Bedford- & Hertfordshire	3.1	3.7	20 051	112
Bottom five GVA per head				
Lincolnshire	0.8	2.3	13 227	74
Tees Valley & Durham	1.4	5.1	13 097	73
Merseyside	1.6	2.7	12 784	72
West Wales & Valleys	2.0	3.7	11 598	65
Cornwall & Isles of Scilly	0.6	3.6	11 510	65

1 GVA at current basic prices on workplace basis.

2 Excluding Extra-Regio.

3 Per head figures are rounded to the nearest pound.

4 2005 estimates are provisional.

Local GVA (NUTS3)

The 2005 estimates for the 133 NUTS3 areas (principally individual counties and unitary authorities) of the UK show Inner London West had the largest GVA per head (£78,285) and the Isle of Anglesey had the smallest (£9,392).

NUTS3 Regions: Top five and bottom five GVA^{1,2} per head, 2005⁴

Region	Share of UK (%)	Growth on 2004 (%)	Per head (£) ³	Per head index (UK=100)
United Kingdom	100.0	4.1	17 827	100
Top five GVA per head				
Inner London West	7.9	5.4	78 285	439
Berkshire	2.2	4.3	29 235	164
Edinburgh, City of	1.2	4.7	28 432	159
Swindon	0.5	4.0	27 354	153
Milton Keynes	0.6	4.3	26 934	151
Bottom five GVA per head				
South West Wales	0.4	4.7	10 859	61
East & West Dunbartonshire	0.2	2.4	10 819	61
Gwent Valleys	0.3	3.8	10 298	58
Wirral	0.3	2.2	10 115	57
Isle of Anglesey	0.1	4.3	9 392	53

1 GVA at current basic prices on workplace basis.

2 Excluding Extra-Regio.

3 Per head figures are rounded to the nearest pound.

4 2005 estimates are provisional.

Regional, sub-regional and local GVA estimates

GVA estimates are available for 12 regions and countries of the UK plus Extra-Regio (off-shore GVA that cannot be assigned to any region - see background note 7), 37 sub-regions (NUTS2) and 133 local areas (NUTS3). These estimates are consistent with Blue Book 2007.

Regional GVA estimates (NUTS1) for 2006 are being released for the first time along with revisions for the period 1989 to 2005. These estimates update those published in December 2006.

At the more detailed level of geography (NUTS2 and NUTS3) estimates for 2005 are being released for the first time along with revisions for the period 1995 to 2004 and update estimates published in December 2006.

Regional GVA estimates (1989 to 2006)

Growth rates of total GVA

Total GVA has been increasing in all UK regions. At current prices, the regions that experienced the highest growth in total GVA between 2005 and 2006 were London (5.7 per cent), Northern Ireland (5.6 per cent) and the North East (5.5 per cent). Most regions experienced a growth rate similar to the UK average of 5.1 per cent. Growth in the North West was the lowest (4.5 per cent).

GVA per head of population

GVA per head of population for the UK as a whole, excluding Extra-Regio, was £18,631 in 2006. London had the highest GVA per head (£26,192). The South East and East of England were also above the UK average at £21,514 and £19,599 respectively. All other regions had a GVA per head value below the UK average. Wales had the lowest (£14,396) followed by Northern Ireland (£15,175) and the North East (£15,177). However, GVA per head has been increasing in all regions.

Shares of GVA

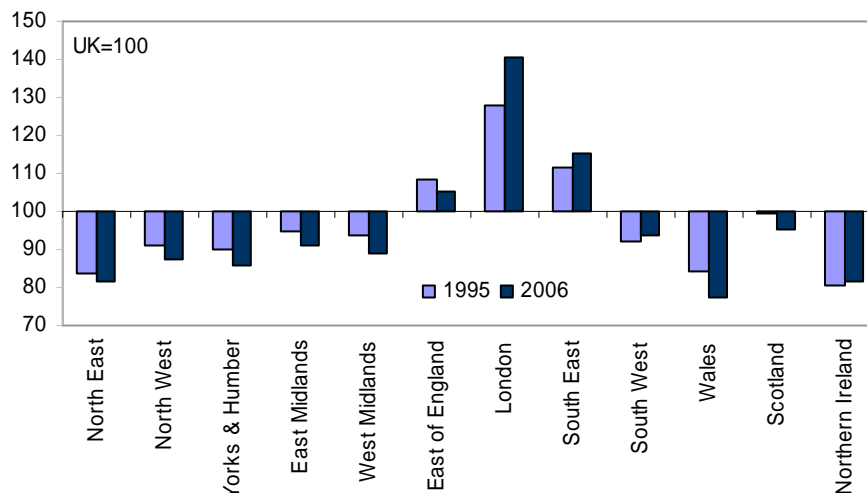
London (17.4 per cent) and the South East (15.7 per cent) had the largest share of total UK GVA in 2006. London's and the South East's share of UK GVA has increased since 1995 when it accounted for 15.3 per cent and 14.9 per cent respectively. Northern Ireland (2.3 per cent) and the North East (3.4 per cent) had the smallest share of UK GVA in 2006.

GVA per head indices

London had the highest regional GVA per head of population index in 2006 (141, where UK=100) – more than a third greater than the UK average and 12 index points above the 1995 estimate (128), as calculated on a residence basis.

Wales had the lowest index (77), 23 index points below the UK average.

Figure 1: Per head indices across NUTS1 regions



Sub-regional and local GVA estimates (1995 to 2005)

Growth rates of total GVA

Total GVA has been increasing in all UK NUTS2 (37 sub-regions) and NUTS3 (133 districts and unitary authorities) areas. Within NUTS2 areas, growth in total GVA between 2004 and 2005 was highest in Inner London (5.5 per cent) and Tees Valley and Durham (5.1 per cent).

The NUTS2 areas with the lowest growth between 2004 and 2005 in total GVA were Merseyside (2.7 per cent) and North Yorkshire (2.7 per cent).

GVA per head of population

The NUTS2 areas with the highest GVA per head of population in 2005 were Inner London (£44,982), Berkshire, Buckinghamshire & Oxfordshire (£25,213) and North Eastern Scotland (£22,315). The NUTS3 areas with the highest GVA per head in 2005 were Inner London – West (£78, 285), Berkshire (£29,235) and Edinburgh (£28,432).

These estimates compare to the UK average GVA per head of £17,827 in 2005.

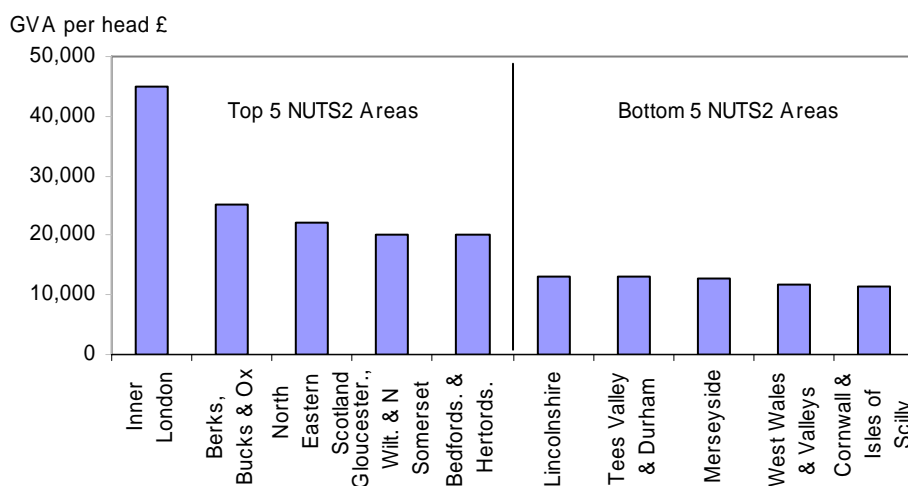
Within NUTS2, the areas with the lowest GVA per head were Cornwall & Isles of Scilly (£11,510), West Wales & the Valleys (£11,598), Merseyside (£12,784) and Tees Valley & Durham (£13,097). The Isle of Anglesey (£9,392), Wirral (£10,115) and Gwent Valleys (£10,298) were the NUTS3 areas with the lowest GVA per head in 2005.

GVA per head indices

The NUTS2 area of Inner London had the largest GVA per head index in 2005 (252) showing GVA per head to be two and half times greater than the UK average. Inner London – West had the largest GVA per head index within NUTS3 areas (439).

In contrast, the GVA per head index for the NUTS2 area Cornwall & the Isles of Scilly was 65, while that of the NUTS3 area Isle of Anglesey (53) was little over half of the UK average.

Figure 2: NUTS2 areas with the highest and lowest GVA per head of population



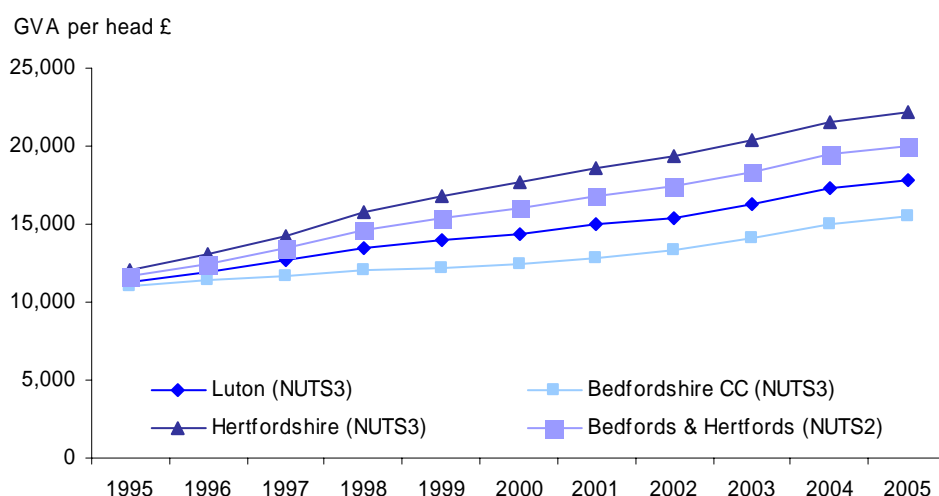
Variation within NUTS regions

Within the 12 regions and countries of the United Kingdom (NUTS1), the GVA of the 37 sub-regions (NUTS2) and 133 districts and unitary authorities (NUTS3) areas can vary considerably. For example, the GVA per head of the NUTS1 region of London in 2005 was £24,978; the GVA per head for the NUTS2 areas Inner London was £44,982 and Outer London, £16,376. While the GVA per head for NUTS3 Inner London – West and Outer London – East and North East were £78,285 and £12,210 respectively.

Over time differences in regional economic activity can become apparent. For example in the East of England GVA per head on a workplace basis was £10,483 in 1995 and £16,980 in 2005. The component NUTS2 sub-regions of East Anglia, Bedfordshire and Hertfordshire and Essex have GVA per head values of £10,568, £11,705 and £9,163 respectively in 1995. All these are within 13 per cent of the NUTS1 value. In 2005 these had changed to East Anglia £16,196, Bedfordshire and Hertfordshire £20,051 and Essex £15,020. Bedfordshire and Hertfordshire GVA per head is 34 per cent greater than Essex in 2005 compared to 28 per cent in 1995.

Looking at the NUTS3 areas within Bedfordshire and Hertfordshire the divergence becomes more apparent. In 1995 the three NUTS3 areas that make up Bedfordshire and Hertfordshire had similar GVA per head values: £11,282 in Luton, £10,977 in Bedfordshire CC and £12,045 in Hertfordshire. By 2005 the spread of GVA per head had changed substantially, with Luton (£17,844) 11 per cent below the NUTS2 value, Bedfordshire (£15,554) 22 per cent below the NUTS2 value and Hertfordshire (£22,153) 11 per cent higher than the NUTS2 value.

Figure 3: NUTS3 areas within Bedfordshire and Hertfordshire



GVA estimates can be found in the tables attached. For more on regional diversity see annex A *Diversity of the NUTS1 regions*.

Revisions

Revisions to regional GVA estimates in this release cover the period 1989 to 2005. Estimates at lower geographical level are being revised for the period 1995 to 2004 with the starting point of the NUTS2 and NUTS3 time series being 1995.

The main reasons for revisions are:

Revisions to the UK national accounts (Blue Book 2007): the only change to the national controls for 2004 and earlier is due to the incorporation of an improved method for estimating investment in own-account software, amounting to an increase of £7.8 billion in 2004 and a decreasing amount to previous years.

Revised data from Her Majesty's Revenue and Customs (HMRC) for use in the calculation of Mixed Income (Sole Traders), Partnerships Income and Compensation of Employees became available. Income data of Sole Traders and Partnerships have been revised for 2004/05 and new estimates supplied for 2005/06. Data from pay-as-you-earn (PAYE), used in the compilation of compensation of employees estimates, have been revised for 2004/05 and new estimates supplied for 2005/06.

Final estimates for 2005 have become available from the Annual Survey of Hours and Earnings (ASHE), Annual Business Inquiry and other data sets.

Future work plans

ONS plans to publish estimates of regional GVA for 1989 to 2007 and sub-regional and local GVA for 1995 to 2006 in December 2008. The publication of regional household income estimates for the period 1995 to 2006 is currently planned for April 2008.

Further detail

The full range of GVA estimates published today can be found on the National Statistics website: <http://www.statistics.gov.uk/statbase/Product.asp?vlnk=14650>.

Annex A: Diversity of the NUTS1 regions

Scotland, Wales, Northern Ireland and the regions of England are all different in character, industrial structure and economic performance. The following table shows some of the differences.

Scotland has the largest area, but a small population; London has by far the smallest area, but the second largest percentage of the population - over 12 per cent. (The South East has the largest population – nearly 14 per cent.) At the other extreme, Northern Ireland has the smallest population: 2.9 per cent of the UK total. These large variations in the regions' populations are reflected in the size of regional GVA and incomes.

The wide variation in the size of the regions makes it difficult to compare the regions' economic performance using cash totals. Comparisons are therefore usually expressed in terms of amounts per head of the population. However, it is important to note that the growth in totals may be quite different from the growth per head in regions where the population has increased or decreased. Furthermore, the level per head is determined both by the average amount of cash of the working population and by the proportion of dependants. Northern Ireland households have a high proportion of children (23 per cent of the population were aged 16 or under in 2006 compared with 19 to 21 per cent in other regions). This will tend to depress amounts per head. Ideally the age structure of the population should, therefore, be taken into account when comparing figures on a per head basis.

Diversity of NUTS1 Regions

Key Regional Statistics – Percentages of the UK

Region	Area 2006 (% of total)	Population ¹ 2006 (% of total)	Total Economically Active ² 2006 (% of total)	Gross Value Added ³ 2006 (% of total)	Total Gross Disposable Household Income ⁴ 2005 (% of total)
North East	3.5	4.2	4.1	3.4	3.6
North West	5.8	11.3	11.0	9.9	10.4
Yorkshire & The Humber	6.3	8.5	8.3	7.3	7.7
East Midlands	6.4	7.2	7.3	6.6	6.7
West Midlands	5.3	8.9	8.8	7.9	8.1
East of England	7.8	9.3	9.4	8.8	9.8
London	0.7	12.4	13.0	19.3	14.9
South East	7.8	13.6	14.1	14.8	15.3
South West	9.8	8.5	8.4	7.9	8.4
England	53.4	83.8	84.3	85.8	85.1
Wales	8.5	4.9	4.6	3.8	4.4
Scotland	32.3	8.4	8.5	8.1	8.0
Northern Ireland	5.8	2.9	2.6	2.3	2.5
United Kingdom (=100%)	244,167 sq km	60.6m	30.6m	£1,128.8bn	£799.5bn

1 Mid-year population estimates.

2 Labour Market Statistics 2006 (average of four quarters, seasonally adjusted).

3 Excluding Extra-Regio and statistical discrepancy.

4 Regional Household income estimates as published by ONS on 27 March 2007, UK less Extra-Regio.

BACKGROUND NOTES

1 Basic quality information for Regional GVA First Release

This year's UK National Accounts Blue Book was 'transitional', in that its scope was reduced from a 'normal' annual exercise. The changes and reasons were described in the article 'Modernising the UK's National Accounts' (Jon Beadle, ONS), first issued in February 2007 and then published in the April 2007 edition of Economic & Labour Market Review. A summary of the changes which have an affect on this regional GVA release is given below, more detail is to be found in the UK Quarterly National Accounts, 1st quarter 2007, published in June 2007.

- The latest annual benchmark data were not fully incorporated.
- No preliminary balance based on these data was struck for 2005 and the preliminary balance for 2004 was not updated.

Effects on this Regional GVA release

- No industrial breakdowns of regional data will be published this year. The existing industrial breakdowns, consistent with the December 2006 release, will remain available on the National Statistics website, but these will not sum to the new regional GVA totals.
- Unusually this year, the two most recent years (2005 and 2006) will both be marked as provisional.

2 The NUTS1 GVA estimates presented here are on a residence basis. This means that earnings of individuals are allocated to the region in which they live. Regional workplace GVA estimates have also been calculated and are released today. NUTS2 and NUTS3 GVA estimates are on a workplace basis and consistent with estimates of workplace-based NUTS1 GVA estimates released today. This complies with the European System of Economic Accounts 1995 (ESA95).

3 Estimates are at current basic prices and do not allow for changes in prices over time (inflation) or differences in regional price levels (purchasing power).

4 The headline GVA series had been calculated using a five year moving average technique. These adjusted series remove some year to year volatility in the unadjusted series. The unadjusted series are also provided for information on the National Statistics website (<http://www.statistics.gov.uk/statbase/Product.asp?vlnk=14650>).

5 Unadjusted GVA estimates are to be supplied to Eurostat as per requirements under the European System of Accounts 1995.

6 The Nomenclature of Units for Territorial Statistics (NUTS) provides a single uniform breakdown for the production of regional statistics for the European Union. There are three levels of NUTS in the UK:

NUTS1: Government Office Regions and Wales, Scotland, Northern Ireland.

NUTS2: 37 areas – mainly groups of counties and unitary authorities; can be referred to as sub-regions

NUTS3: 133 areas – principally individual counties and unitary authorities; also known as local areas.

Some areas appear at more than one level, for example Northern Ireland appears at NUTS1 and NUTS2 level.

7 The contribution to GVA of UK embassies abroad and UK forces stationed overseas is included in Extra-Regio, along with the elements relating to activities taking place on the continental shelf. As these cannot be assigned to specific regions they are assigned as “Extra-Regio GVA”.

8 As with the national accounts, regional, sub-regional and local GVA estimates are calculated as reliably as possible. There is no easy way to measure the reliability of the estimates but ONS carries out consistency checks on data inputs, apply methods consistently and make use of local knowledge for England, Scotland, Wales and Northern Ireland. The estimates are partly based on sample surveys and the quality of the results therefore varies according to sample size. This means that the results for smaller regions are subject to a greater degree of uncertainty than those for larger regions.

9 For up to date details of the availability of sub-national economic statistics please contact: Customer Contact Centre, Office for National Statistics, Government Buildings, Cardiff Road, Newport NP10 8XG, tel: 0845 601 3034, e-mail: info@statistics.gov.uk.

10 Details of the policy governing the release of new data are available from the press office.

11 **National Statistics** are produced to high professional standards set out in the National Statistics Code of Practice. They undergo regular quality assurance reviews to ensure that they meet customer needs. They are produced free from any political interference.

© Crown Copyright 2007.

NUTS1.1 ¹Headline ^{2,3}Gross Value Added (GVA) at current basic prices by region

		1997	1998	1999	2000	2001	2002	2003	2004	2005 ⁴	2006 ⁴
Total GVA (£ million)											
United Kingdom	ABML	725 311	768 594	805 989	846 683	889 063	937 323	993 507	1 051 934	1 096 629	1 154 959
North East	IFZR	25 487	26 576	27 344	28 251	29 609	31 054	32 934	35 058	36 763	38 788
North West	IFZS	74 236	78 226	81 402	84 308	88 435	92 639	97 707	103 035	106 501	111 252
Yorkshire & the Humber	IFZT	54 179	57 014	58 897	61 034	64 192	67 802	71 813	75 823	78 513	82 116
East Midlands	IFZU	47 365	49 774	51 520	53 396	56 477	59 734	63 744	67 755	70 569	74 113
West Midlands	IFZV	59 783	63 129	65 442	67 786	70 973	74 109	77 828	81 791	84 758	88 997
East of England	IFZW	68 961	73 822	77 821	81 945	86 772	91 136	96 374	101 461	104 987	109 884
London	IFZX	111 146	120 947	128 981	134 720	141 752	153 363	164 931	176 764	186 238	196 764
South East	IFZY	108 930	117 857	124 956	131 125	138 723	145 482	153 782	162 314	168 624	177 224
South West	IFZZ	54 748	58 187	61 136	63 915	67 771	71 809	76 605	81 551	84 889	89 501
England	IGAA	604 834	645 530	677 499	706 481	744 704	787 128	835 718	885 551	921 842	968 639
Wales	IGAB	28 672	29 787	30 736	31 898	33 525	35 252	37 262	39 340	40 711	42 697
Scotland	IGAC	60 620	63 178	65 109	67 186	69 994	73 689	78 066	82 538	86 321	91 024
Northern Ireland	IGAD	16 412	17 526	18 377	19 210	20 150	21 164	22 466	23 933	25 017	26 429
United Kingdom <i>less</i> Extra-Regio ⁵ & statistical discrepancy	IGAE	710 537	756 020	791 720	824 775	868 373	917 233	973 512	1 031 362	1 073 891	1 128 790
Extra-Regio ⁵	IGAF	14 774	12 574	14 269	21 908	20 690	20 090	19 995	20 572	23 657	26 722
Statistical discrepancy (income adjusted)	RVFC	-	-	-	-	-	-	-	-	-916	-551
GVA per head (£)											
United Kingdom	IGAH	12 438	13 144	13 734	14 378	15 040	15 800	16 682	17 577	18 205	19 063
North East	IGAI	9 924	10 378	10 722	11 108	11 657	12 221	12 959	13 791	14 419	15 177
North West	IGAJ	10 926	11 517	12 018	12 445	13 057	13 667	14 368	15 109	15 571	16 234
Yorkshire & the Humber	IGAK	10 928	11 500	11 883	12 309	12 899	13 555	14 284	14 973	15 372	15 968
East Midlands	IGAL	11 495	12 044	12 407	12 811	13 480	14 150	14 984	15 789	16 307	16 982
West Midlands	IGAM	11 361	11 976	12 413	12 864	13 440	13 996	14 652	15 355	15 841	16 583
East of England	IGAN	13 093	13 923	14 577	15 246	16 067	16 775	17 603	18 411	18 872	19 599
London	IGAO	15 844	17 118	18 029	18 616	19 359	20 833	22 397	23 922	24 978	26 192
South East	IGAP	13 871	14 940	15 708	16 410	17 290	18 079	19 016	19 977	20 603	21 514
South West	IGAQ	11 341	11 999	12 525	12 999	13 709	14 439	15 306	16 175	16 688	17 467
England	IGAR	12 429	13 222	13 817	14 350	15 060	15 853	16 759	17 672	18 267	19 082
Wales	IGAS	9 904	10 273	10 596	10 973	11 520	12 074	12 712	13 352	13 784	14 396
Scotland	IGAT	11 925	12 444	12 837	13 270	13 821	14 578	15 436	16 253	16 943	17 789
Northern Ireland	IGAU	9 820	10 446	10 945	11 415	11 928	12 474	13 195	13 993	14 508	15 175
United Kingdom <i>less</i> Extra-Regio ⁵	IGAV	12 185	12 929	13 491	14 006	14 690	15 462	16 346	17 234	17 827	18 631
GVA per head:Indices (UK <i>less</i> Extra-Regio=100)											
United Kingdom	IGAW	100	100	100	100	100	100	100	100	100	100
North East	IGAX	81	80	79	79	79	79	79	80	81	81
North West	IGAY	90	89	89	89	89	88	88	88	87	87
Yorkshire & the Humber	IGAZ	90	89	88	88	88	88	87	87	86	86
East Midlands	IGBA	94	93	92	91	92	92	92	92	91	91
West Midlands	IGBB	93	93	92	92	91	91	90	89	89	89
East of England	IGBC	107	108	108	109	109	108	108	107	106	105
London	IGBD	130	132	134	133	132	135	137	139	140	141
South East	IGBE	114	116	116	117	118	117	116	116	116	115
South West	IGBF	93	93	93	93	93	93	94	94	94	94
England	IGBH	102	102	102	102	103	103	103	103	102	102
Wales	IGBG	81	79	79	78	78	78	78	77	77	77
Scotland	IGBI	98	96	95	95	94	94	94	94	95	95
Northern Ireland	IGBJ	81	81	81	81	81	81	81	81	81	81

1 The headline regional GVA series for this publication have been calculated using a five-period moving average.

2 Estimates of regional GVA in this table are on a residence basis, where the income of commuters is allocated to where they live rather than their place of work.

3 Components may not sum to totals as a result of rounding.

4 Provisional.

5 The GVA for Extra-Regio comprises compensation of employees and gross operating surplus which cannot be assigned to regions.

NUTS1.2 ¹Headline Gross Value Added^{2,3} (GVA) by component of income at current basic prices by region

		1997	1998	1999	2000	2001	2002	2003	2004	2005 ⁴	2006 ⁴
Total GVA (£ million)											
United Kingdom	ABML	725 311	768 594	805 989	846 683	889 063	937 323	993 507	1 051 934	1 096 629	1 154 959
North East	IFZR	25 487	26 576	27 344	28 251	29 609	31 054	32 934	35 058	36 763	38 788
North West	IFZS	74 236	78 226	81 402	84 308	88 435	92 639	97 707	103 035	106 501	111 252
Yorkshire & the Humber	IFZT	54 179	57 014	58 897	61 034	64 192	67 802	71 813	75 823	78 513	82 116
East Midlands	IFZU	47 365	49 774	51 520	53 396	56 477	59 734	63 744	67 755	70 569	74 113
West Midlands	IFZV	59 783	63 129	65 442	67 786	70 973	74 109	77 828	81 791	84 758	88 997
East of England	IFZW	68 961	73 822	77 821	81 945	86 772	91 136	96 374	101 461	104 987	109 884
London	IFZX	111 146	120 947	128 981	134 720	141 752	153 363	164 931	176 764	186 238	196 764
South East	IFZY	108 930	117 857	124 956	131 125	138 723	145 482	153 782	162 314	168 624	177 224
South West	IFZZ	54 748	58 187	61 136	63 915	67 771	71 809	76 605	81 551	84 889	89 501
England	IGAA	604 834	645 530	677 499	706 481	744 704	787 128	835 718	885 551	921 842	968 639
Wales	IGAB	28 672	29 787	30 736	31 898	33 525	35 252	37 262	39 340	40 711	42 697
Scotland	IGAC	60 620	63 178	65 109	67 186	69 994	73 689	78 066	82 538	86 321	91 024
Northern Ireland	IGAD	16 412	17 526	18 377	19 210	20 150	21 164	22 466	23 933	25 017	26 429
United Kingdom less Extra-Regio ⁵ & statistical discrepancy	IGAE	710 537	756 020	791 720	824 775	868 373	917 233	973 512	1 031 362	1 073 891	1 128 790
Extra-Regio ⁵	IGAF	14 774	12 574	14 269	21 908	20 690	20 090	19 995	20 572	23 657	26 722
Statistical discrepancy (income adjusted)	RVFC	-	-	-	-	-	-	-	-	-916	-551
Of which:											
Compensation of Employees (£m)											
United Kingdom	HAEA	429 967	466 080	495 793	532 179	564 194	587 396	616 893	648 717	686 805	721 287
North East	IGCA	16 463	17 485	18 229	19 230	20 189	20 992	21 946	22 982	24 218	25 339
North West	IGCB	45 269	48 406	51 027	54 164	57 129	59 587	62 317	65 141	68 405	71 172
Yorkshire & the Humber	IGCC	33 267	35 814	37 705	40 136	42 411	44 345	46 397	48 385	50 664	52 707
East Midlands	IGCD	28 231	30 370	31 998	34 029	36 215	38 160	40 472	42 753	45 297	47 469
West Midlands	IGCE	36 529	39 312	41 222	43 693	45 992	47 629	49 584	51 582	54 131	56 573
East of England	IGCF	42 100	45 690	48 823	52 764	56 195	58 366	61 018	63 745	67 155	70 313
London	IGCG	66 584	74 111	80 787	88 619	94 488	98 055	103 879	110 703	119 284	126 558
South East	IGCH	65 562	71 932	77 095	83 006	87 936	90 949	94 991	99 743	105 684	111 230
South West	IGCI	31 642	34 403	36 711	39 418	41 892	43 764	46 236	48 901	51 815	54 577
England	IGCJ	365 647	397 523	423 596	455 060	482 447	501 848	526 840	553 936	586 652	615 937
Wales	IGCK	17 027	18 172	19 142	20 367	21 580	22 613	23 792	25 019	26 301	27 542
Scotland	IGCL	36 301	38 701	40 749	43 644	46 259	48 285	50 671	53 244	56 440	59 420
Northern Ireland	IGCM	9 448	10 113	10 750	11 485	12 194	12 762	13 441	14 151	14 877	15 631
United Kingdom less Extra-Regio ⁵	IGCN	428 422	464 509	494 236	530 555	562 480	585 508	614 744	646 350	684 270	718 530
Extra-Regio ⁵	IGCO	1 545	1 571	1 557	1 624	1 714	1 888	2 150	2 367	2 535	2 757
Operating Surplus/Mixed Income⁶ (£m)											
United Kingdom	IGCP	295 343	302 514	310 197	314 504	324 871	349 928	376 614	403 216	410 744	434 225
North East	IGCQ	9 024	9 091	9 116	9 021	9 420	10 062	10 987	12 076	12 545	13 449
North West	IGCR	28 967	29 820	30 375	30 143	31 306	33 051	35 390	37 894	38 096	40 079
Yorkshire & the Humber	IGCS	20 911	21 199	21 192	20 898	21 781	23 457	25 416	27 437	27 849	29 409
East Midlands	IGCT	19 134	19 404	19 522	19 367	20 263	21 574	23 272	25 002	25 273	26 643
West Midlands	IGCU	23 254	23 817	24 220	24 094	24 981	26 480	28 244	30 209	30 627	32 425
East of England	IGCV	26 861	28 132	28 999	29 181	30 577	32 770	35 356	37 715	37 832	39 572
London	IGCW	44 562	46 836	48 194	46 101	47 265	55 308	61 052	66 061	66 955	70 206
South East	IGCX	43 367	45 925	47 861	48 119	50 787	54 533	58 791	62 571	62 940	65 994
South West	IGCY	23 105	23 784	24 425	24 497	25 879	28 045	30 369	32 649	33 073	34 924
England	IGCZ	239 185	248 008	253 904	251 421	262 259	285 280	308 877	331 614	335 190	352 701
Wales	IGDA	11 645	11 615	11 594	11 532	11 945	12 639	13 470	14 321	14 410	15 156
Scotland	IGDB	24 319	24 476	24 360	23 542	23 735	25 404	27 395	29 294	29 881	31 605
Northern Ireland	IGDC	6 964	7 412	7 627	7 725	7 956	8 403	9 026	9 782	10 141	10 798
United Kingdom less Extra-Regio ⁵	IGDD	282 113	291 511	297 485	294 220	305 895	331 726	358 768	385 011	389 622	410 260
Extra-Regio ⁵	IGDE	13 230	11 003	12 712	20 284	18 976	18 202	17 846	18 205	21 122	23 965

1 The headline regional GVA series for this publication have been calculated using a five-period moving average.

2 Estimates of regional GVA in this table are on a residence basis, where the income of commuters is allocated to where they live rather than their place of work.

3 Components may not sum to totals as a result of rounding.

4 Provisional.

5 The GVA for Extra-Regio comprises compensation of employees and gross operating surplus which cannot be assigned to regions.

6 Including taxes (less subsidies) on production.

NUTS1.4 ¹Headline Workplace based Gross Value Added^{2,3} (GVA) at current basic prices by region

		1997	1998	1999	2000	2001	2002	2003	2004	2005 ⁴	2006 ⁴
Total GVA (£million)											
United Kingdom	ABML	725 311	768 594	805 989	846 683	889 063	937 323	993 507	1 051 934	1 096 629	1 154 959
North East	IFZR	25 487	26 576	27 344	28 251	29 609	31 054	32 934	35 058	36 763	38 788
North West	IFZS	74 236	78 226	81 402	84 308	88 435	92 639	97 707	103 035	106 501	111 252
Yorkshire & the Humber	IFZT	54 179	57 014	58 897	61 034	64 192	67 802	71 813	75 823	78 513	82 116
East Midlands	IFZU	47 365	49 774	51 520	53 396	56 477	59 734	63 744	67 755	70 569	74 113
West Midlands	IFZV	59 783	63 129	65 442	67 786	70 973	74 109	77 828	81 791	84 758	88 997
East of England	IGLF	61 376	65 438	68 520	71 524	75 536	79 865	85 360	90 895	94 463	98 967
London	IGLG	127 433	138 566	147 632	154 667	162 626	174 118	185 427	196 855	206 324	217 549
South East	IGLH	100 228	108 621	115 606	121 600	129 085	135 998	144 300	152 788	159 062	167 356
South West	IFZZ	54 748	58 187	61 136	63 915	67 771	71 809	76 605	81 551	84 889	89 501
England	IGAA	604 834	645 530	677 499	706 481	744 704	787 128	835 718	885 551	921 842	968 639
Wales	IGAB	28 672	29 787	30 736	31 898	33 525	35 252	37 262	39 340	40 711	42 697
Scotland	IGAC	60 620	63 178	65 109	67 186	69 994	73 689	78 066	82 538	86 321	91 024
Northern Ireland	IGAD	16 412	17 526	18 377	19 210	20 150	21 164	22 466	23 933	25 017	26 429
United Kingdom <i>less</i> Extra-Regio ⁵ & statistical discrepancy	IGAE	710 537	756 020	791 720	824 775	868 373	917 233	973 512	1 031 362	1 073 891	1 128 790
Extra-Regio ⁵	IGAF	14 774	12 574	14 269	21 908	20 690	20 090	19 995	20 572	23 657	26 722
Statistical discrepancy (income adjusted)	RVFC	-	-	-	-	-	-	-	-	-916	-551
GVA per head (£)											
United Kingdom	IGAH	12 438	13 144	13 734	14 378	15 040	15 800	16 682	17 577	18 205	19 063
North East	IGAI	9 924	10 378	10 722	11 108	11 657	12 221	12 959	13 791	14 419	15 177
North West	IGAJ	10 926	11 517	12 018	12 445	13 057	13 667	14 368	15 109	15 571	16 234
Yorkshire & the Humber	IGAK	10 928	11 500	11 883	12 309	12 899	13 555	14 284	14 973	15 372	15 968
East Midlands	IGAL	11 495	12 044	12 407	12 811	13 480	14 150	14 984	15 789	16 307	16 982
West Midlands	IGAM	11 361	11 976	12 413	12 864	13 440	13 996	14 652	15 355	15 841	16 583
East of England	IGLI	11 653	12 342	12 835	13 307	13 987	14 701	15 592	16 494	16 980	17 652
London	IGLJ	18 166	19 612	20 637	21 372	22 209	23 652	25 180	26 641	27 672	28 959
South East	IGLK	12 763	13 769	14 532	15 218	16 088	16 901	17 844	18 804	19 434	20 316
South West	IGAQ	11 341	11 999	12 525	12 999	13 709	14 439	15 306	16 175	16 688	17 467
England	IGAR	12 429	13 222	13 817	14 350	15 060	15 853	16 759	17 672	18 267	19 082
Wales	IGAS	9 904	10 273	10 596	10 973	11 520	12 074	12 712	13 352	13 784	14 396
Scotland	IGAT	11 925	12 444	12 837	13 270	13 821	14 578	15 436	16 253	16 943	17 789
Northern Ireland	IGAU	9 820	10 446	10 945	11 415	11 928	12 474	13 195	13 993	14 508	15 175
United Kingdom <i>less</i> Extra-Regio ⁵	IGAV	12 185	12 929	13 491	14 006	14 690	15 462	16 346	17 234	17 827	18 631
GVA per head:Indices (UK <i>less</i> Extra-Regio=100)											
United Kingdom	IGAW	100	100	100	100	100	100	100	100	100	100
North East	IGAX	81	80	79	79	79	79	79	80	81	81
North West	IGAY	90	89	89	89	89	88	88	88	87	87
Yorkshire & the Humber	IGAZ	90	89	88	88	88	88	87	87	86	86
East Midlands	IGBA	94	93	92	91	92	92	92	92	91	91
West Midlands	IGBB	93	93	92	92	91	91	90	89	89	89
East of England	IGLL	96	95	95	95	95	95	95	96	95	95
London	IGLM	149	152	153	153	151	153	154	155	155	155
South East	IGLN	105	106	108	109	110	109	109	109	109	109
South West	IGBF	93	93	93	93	93	93	94	94	94	94
England	IGBH	102	102	102	102	103	103	103	103	102	102
Wales	IGBG	81	79	79	78	78	78	78	77	77	77
Scotland	IGBI	98	96	95	95	94	94	94	94	95	95
Northern Ireland	IGBJ	81	81	81	81	81	81	81	81	81	81

1 The headline regional GVA series for this publication have been calculated using a five-period moving average.

2 Estimates of workplace based GVA allocate income to the region in which commuters work.

3 Components may not sum to totals as a result of rounding.

4 Provisional.

5 The GVA for Extra-Regio comprises compensation of employees and gross operating surplus which cannot be assigned to regions.

NUTS2.1 ¹Headline Gross Value Added (GVA)^{2,3} by NUTS2 area at current basic prices by region

£million

		1996	1997	1998	1999	2000	2001	2002	2003	2004	2005 ⁴
NUTS Level 1											
NUTS Level 2											
UNITED KINGDOM	ABML	685 589	725 311	768 594	805 989	846 683	889 063	937 323	993 507	1 051 934	1 096 629
England	IGAA	568 234	604 834	645 530	677 499	706 481	744 704	787 128	835 718	885 551	921 842
North East	IFZR	24 482	25 487	26 576	27 344	28 251	29 609	31 054	32 934	35 058	36 763
Tees Valley and Durham	AIM6	10 870	11 211	11 551	11 800	12 045	12 411	12 808	13 495	14 384	15 113
Northumberland and Tyne and Wear	AIM7	13 611	14 275	15 025	15 545	16 207	17 198	18 246	19 439	20 674	21 650
North West	IFZS	70 713	74 236	78 226	81 402	84 308	88 435	92 639	97 707	103 035	106 501
Cumbria	AIM8	5 098	5 208	5 292	5 301	5 306	5 461	5 708	6 078	6 450	6 687
Cheshire	AIM9	12 784	13 577	14 313	14 905	15 408	16 160	16 849	17 678	18 600	19 306
Greater Manchester	AIN2	27 100	28 633	30 463	31 897	33 107	34 714	36 340	38 442	40 685	42 082
Lancashire	AIN3	14 306	14 781	15 402	16 033	16 707	17 592	18 403	19 364	20 398	21 073
Merseyside	AIN4	11 425	12 036	12 756	13 266	13 781	14 508	15 338	16 146	16 902	17 352
Yorkshire and the Humber	IFZT	51 319	54 179	57 014	58 897	61 034	64 192	67 802	71 813	75 823	78 513
East Riding and North Lincolnshire	AIN5	9 502	9 823	9 991	10 002	10 249	10 757	11 390	12 071	12 768	13 155
North Yorkshire	AIN6	7 923	8 326	8 759	9 112	9 551	10 156	10 840	11 520	12 147	12 478
South Yorkshire	AIN7	11 118	11 790	12 498	12 885	13 359	14 056	14 946	15 967	17 005	17 660
West Yorkshire	AIN8	22 776	24 240	25 766	26 898	27 875	29 224	30 627	32 254	33 903	35 219
East Midlands	IFZU	44 747	47 365	49 774	51 520	53 396	56 477	59 734	63 744	67 755	70 569
Derbyshire and Nottinghamshire	AIN9	20 888	22 071	23 085	23 925	24 852	26 302	27 707	29 508	31 403	32 805
Leicestershire, Rutland and Northamptonshire	AIO2	17 787	19 040	20 309	21 085	21 786	22 873	24 174	25 840	27 551	28 763
Lincolnshire	AIO3	6 072	6 253	6 380	6 510	6 758	7 303	7 853	8 396	8 801	9 001
West Midlands	IFZV	56 406	59 783	63 129	65 442	67 786	70 973	74 109	77 828	81 791	84 758
Herefordshire, Worcestershire and Warwickshire	AIO4	12 594	13 346	14 259	15 071	15 789	16 579	17 227	18 175	19 254	20 057
Shropshire and Staffordshire	AIO5	14 195	15 018	15 780	16 125	16 549	17 245	18 172	19 238	20 354	20 963
West Midlands	AIO6	29 617	31 419	33 090	34 246	35 449	37 149	38 711	40 414	42 183	43 738
East of England	IGLF	57 903	61 376	65 438	68 520	71 524	75 536	79 865	85 360	90 895	94 463
East Anglia	AIO7	23 295	24 238	25 359	26 291	27 378	29 025	30 875	33 135	35 307	36 735
Bedfordshire and Hertfordshire	AIO8	19 348	20 942	22 904	24 346	25 624	26 963	28 146	29 786	31 655	32 835
Essex	AIO9	15 261	16 195	17 175	17 883	18 522	19 547	20 844	22 439	23 934	24 893
London	IGLG	118 080	127 433	138 566	147 632	154 667	162 626	174 118	185 427	196 855	206 324
Inner London	AIP2	70 892	76 712	83 556	89 512	94 289	100 382	109 774	117 820	125 490	132 438
Outer London	AIP3	47 187	50 720	55 011	58 120	60 378	62 244	64 345	67 608	71 365	73 886
South East	IGLH	93 219	100 228	108 621	115 606	121 600	129 085	135 998	144 300	152 788	159 062
Berkshire, Buckinghamshire and Oxfordshire	AIP4	29 496	32 146	35 800	38 714	41 021	43 457	45 660	48 663	51 835	54 049
Surrey, East and West Sussex	AIP5	29 891	32 119	34 424	36 575	38 531	41 027	43 136	45 197	47 170	48 743
Hampshire and Isle of Wight	AIP6	19 161	20 501	22 006	23 058	24 063	25 565	27 093	28 958	30 865	32 300
Kent	AIP7	14 671	15 461	16 391	17 259	17 986	19 036	20 108	21 483	22 918	23 969
South West	IFZZ	51 366	54 748	58 187	61 136	63 915	67 771	71 809	76 605	81 551	84 889
Gloucestershire, Wiltshire and North Somerset	AIP8	26 724	28 882	31 101	32 598	34 026	36 137	38 580	41 198	43 730	45 443
Dorset and Somerset	AIP9	10 993	11 679	12 458	13 263	13 899	14 572	15 205	16 143	17 246	18 059
Cornwall and Isles of Scilly	AIQ2	3 447	3 613	3 796	4 019	4 287	4 659	5 019	5 425	5 797	6 003
Devon	AIQ3	10 203	10 573	10 831	11 255	11 703	12 403	13 005	13 839	14 778	15 384
Wales	IGAB	27 518	28 672	29 787	30 736	31 898	33 525	35 252	37 262	39 340	40 711
West Wales and the Valleys	AIQ4	15 599	16 038	16 362	16 610	17 109	17 861	18 750	19 840	21 024	21 793
East Wales	AIQ5	11 919	12 634	13 425	14 125	14 790	15 664	16 502	17 422	18 316	18 918
Scotland	IGAC	57 932	60 620	63 178	65 109	67 186	69 994	73 689	78 066	82 538	86 321
North Eastern Scotland	AIQ6	8 078	8 432	8 817	9 057	9 431	9 772	10 061	10 433	10 861	11 247
Eastern Scotland	AIQ7	22 339	23 344	24 252	24 873	25 550	26 608	28 368	30 214	32 058	33 674
South Western Scotland	AIQ8	24 399	25 636	26 774	27 704	28 583	29 813	31 219	33 028	34 881	36 428
Highlands and Islands	AIQ9	3 116	3 207	3 336	3 475	3 622	3 800	4 041	4 391	4 738	4 973
Northern Ireland	IGAD	15 496	16 412	17 526	18 377	19 210	20 150	21 164	22 466	23 933	25 017
UK less Extra-Regio⁵	IGAE	669 179	710 537	756 020	791 720	824 775	868 373	917 233	973 512	1 031 362	1 073 891
Extra-Regio ⁵	IGAF	16 411	14 774	12 574	14 269	21 908	20 690	20 090	19 995	20 572	23 657

1 The headline GVA series for this publication have been calculated using a five-period moving average.

2 Estimates of workplace based GVA allocate income to the region in which commuters work.

3 Components may not sum to totals as a result of rounding.

4 Provisional.

5 The GVA for Extra-Regio comprises compensation of employees and gross operating surplus which cannot be assigned to regions.

NUTS2.2 ¹Headline Gross Value Added (GVA)² per head by NUTS2 area at current basic prices by region

£ per head

		1996	1997	1998	1999	2000	2001	2002	2003	2004	2005 ³
NUTS Level 1											
NUTS Level 2											
UNITED KINGDOM	IGAH	11 787	12 438	13 144	13 734	14 378	15 040	15 800	16 682	17 577	18 205
England	IGAR	11 712	12 429	13 222	13 817	14 350	15 060	15 853	16 759	17 672	18 267
North East	IGAI	9 502	9 924	10 378	10 722	11 108	11 657	12 221	12 959	13 791	14 419
Tees Valley and Durham	AIR2	9 423	9 742	10 047	10 284	10 501	10 831	11 174	11 759	12 508	13 097
Northumberland and Tyne and Wear	AIR3	9 566	10 073	10 647	11 080	11 606	12 336	13 082	13 946	14 849	15 511
North West	IGAJ	10 384	10 926	11 517	12 018	12 445	13 057	13 667	14 368	15 109	15 571
Cumbria	AIR4	10 473	10 669	10 821	10 859	10 882	11 196	11 685	12 376	13 045	13 491
Cheshire	AIR5	13 077	13 858	14 575	15 203	15 688	16 423	17 104	17 871	18 732	19 367
Greater Manchester	AIR6	10 706	11 354	12 079	12 680	13 157	13 797	14 432	15 208	16 059	16 546
Lancashire	AIR7	10 131	10 471	10 903	11 364	11 814	12 412	12 942	13 533	14 170	14 568
Merseyside	AIR8	8 150	8 641	9 200	9 626	10 029	10 607	11 242	11 858	12 436	12 784
Yorkshire and the Humber	IGAK	10 344	10 928	11 500	11 883	12 309	12 899	13 555	14 284	14 973	15 372
East Riding and North Lincolnshire	AIR9	10 795	11 185	11 397	11 431	11 728	12 284	12 926	13 589	14 254	14 599
North Yorkshire	AIS2	10 880	11 398	11 927	12 327	12 825	13 516	14 329	15 111	15 771	16 060
South Yorkshire	AIS3	8 695	9 238	9 813	10 146	10 549	11 098	11 767	12 539	13 293	13 715
West Yorkshire	AIS4	10 980	11 695	12 429	12 980	13 442	14 029	14 626	15 334	16 001	16 444
East Midlands	IGAL	10 892	11 495	12 044	12 407	12 811	13 480	14 150	14 984	15 789	16 307
Derbyshire and Nottinghamshire	AIS5	10 603	11 193	11 690	12 096	12 559	13 261	13 889	14 701	15 537	16 123
Leicestershire, Rutland and Northamptonshire	AIS6	11 695	12 466	13 257	13 676	14 064	14 675	15 398	16 341	17 275	17 840
Lincolnshire	AIS7	9 837	10 067	10 191	10 289	10 557	11 276	11 957	12 612	13 032	13 227
West Midlands	IGAM	10 717	11 361	11 976	12 413	12 864	13 440	13 996	14 652	15 355	15 841
Herefordshire, Worcestershire and Warwickshire	AIS8	10 582	11 140	11 829	12 467	13 001	13 553	14 025	14 723	15 532	16 085
Shropshire and Staffordshire	AIS9	9 676	10 197	10 667	10 889	11 153	11 579	12 171	12 834	13 526	13 885
West Midlands	AIT2	11 365	12 124	12 793	13 262	13 786	14 466	15 040	15 676	16 336	16 861
East of England	IGLI	11 065	11 653	12 342	12 835	13 307	13 987	14 701	15 592	16 494	16 980
East Anglia	AIT3	11 021	11 380	11 818	12 184	12 593	13 310	14 063	14 924	15 750	16 196
Bedfordshire and Hertfordshire	AIT4	12 500	13 439	14 592	15 376	16 081	16 815	17 455	18 377	19 472	20 051
Essex	AIT5	9 712	10 259	10 825	11 195	11 522	12 094	12 828	13 735	14 562	15 020
London	IGLJ	16 930	18 166	19 612	20 637	21 372	22 209	23 652	25 180	26 641	27 672
Inner London	AIT6	26 688	28 706	30 956	32 542	33 615	35 106	38 033	40 747	43 173	44 982
Outer London	AIT7	10 928	11 680	12 599	13 199	13 624	13 947	14 378	15 116	15 921	16 376
South East	IGLK	11 951	12 763	13 769	14 532	15 218	16 088	16 901	17 844	18 804	19 434
Berkshire, Buckinghamshire and Oxfordshire	AIT8	14 457	15 626	17 314	18 584	19 582	20 670	21 688	23 006	24 398	25 213
Surrey, East and West Sussex	AIT9	12 045	12 836	13 699	14 387	15 112	16 037	16 833	17 569	18 267	18 770
Hampshire and Isle of Wight	AIU2	11 015	11 727	12 530	13 052	13 572	14 347	15 142	16 100	17 097	17 755
Kent	AIU3	9 533	10 004	10 561	11 041	11 433	12 041	12 649	13 422	14 209	14 752
South West	IGAQ	10 717	11 341	11 999	12 525	12 999	13 709	14 439	15 306	16 175	16 688
Gloucestershire, Wiltshire and North Somerset	AIU4	12 675	13 590	14 565	15 147	15 724	16 633	17 673	18 742	19 736	20 295
Dorset and Somerset	AIU5	9 511	10 025	10 640	11 280	11 733	12 223	12 674	13 401	14 270	14 868
Cornwall and Isles of Scilly	AIU6	7 167	7 448	7 779	8 160	8 618	9 279	9 882	10 580	11 212	11 510
Devon	AIU7	9 736	10 051	10 264	10 612	10 926	11 522	12 010	12 703	13 430	13 841
Wales	IGAS	9 517	9 904	10 273	10 596	10 973	11 520	12 074	12 712	13 352	13 784
West Wales and the Valleys	AIU8	8 404	8 645	8 828	8 967	9 233	9 630	10 081	10 625	11 206	11 598
East Wales	AIU9	11 514	12 153	12 834	13 475	14 035	14 840	15 569	16 375	17 114	17 605
Scotland	IGAT	11 377	11 925	12 444	12 837	13 270	13 821	14 578	15 436	16 253	16 943
North Eastern Scotland	AIV2	15 834	16 602	17 419	17 896	18 694	19 422	20 079	20 814	21 634	22 315
Eastern Scotland	AIV3	11 852	12 361	12 821	13 122	13 444	13 973	14 895	15 843	16 683	17 416
South Western Scotland	AIV4	10 498	11 076	11 602	12 051	12 493	13 034	13 682	14 484	15 280	15 958
Highlands and Islands	AIV5	8 352	8 614	8 973	9 355	9 789	10 286	10 998	11 905	12 736	13 276
Northern Ireland	IGAU	9 325	9 820	10 446	10 945	11 415	11 928	12 474	13 195	13 993	14 508
UK less Extra-Regio⁴	IGAV	11 505	12 185	12 929	13 491	14 006	14 690	15 462	16 346	17 234	17 827

1 The headline GVA series for this publication have been calculated using a five-period moving average.

2 Estimates of workplace based GVA allocate income to the region in which commuters work.

3 Provisional.

4 The GVA for Extra-Regio comprises compensation of employees and gross operating surplus which cannot be assigned to regions.

NUTS2.3 ¹Headline Gross Value Added (GVA)² per head indices by NUTS2 area at current basic prices by region

UK /less Extra-Region=100

		1996	1997	1998	1999	2000	2001	2002	2003	2004	2005 ³
NUTS Level 1											
NUTS Level 2											
UNITED KINGDOM	IGAW	100	100	100	100	100	100	100	100	100	100
England	IGBG	102	102	102	102	102	103	103	103	103	102
North East	IGAX	83	81	80	79	79	79	79	79	80	81
Tees Valley and Durham	AIV6	82	80	78	76	75	74	72	72	73	73
Northumberland and Tyne and Wear	AIV7	83	83	82	82	83	84	85	85	86	87
North West	IGAY	90	90	89	89	89	89	88	88	88	87
Cumbria	AIV8	91	88	84	80	78	76	76	76	76	76
Cheshire	AIV9	114	114	113	113	112	112	111	109	109	109
Greater Manchester	AIW2	93	93	93	94	94	94	93	93	93	93
Lancashire	AIW3	88	86	84	84	84	84	84	83	82	82
Merseyside	AIW4	71	71	71	71	72	72	73	73	72	72
Yorkshire and the Humber	IGAZ	90	90	89	88	88	88	88	87	87	86
East Riding and North Lincolnshire	AIW5	94	92	88	85	84	84	84	83	83	82
North Yorkshire	AIW6	95	94	92	91	92	92	93	92	92	90
South Yorkshire	AIW7	76	76	76	75	75	76	76	77	77	77
West Yorkshire	AIW8	95	96	96	96	96	96	95	94	93	92
East Midlands	IGBA	95	94	93	92	91	92	92	92	92	91
Derbyshire and Nottinghamshire	AIW9	92	92	90	90	90	90	90	90	90	90
Leicestershire, Rutland and Northamptonshire	AIX2	102	102	103	101	100	100	100	100	100	100
Lincolnshire	AIX3	86	83	79	76	75	77	77	77	76	74
West Midlands	IGBB	93	93	93	92	92	91	91	90	89	89
Herefordshire, Worcestershire and Warwickshire	AIX4	92	91	91	92	93	92	91	90	90	90
Shropshire and Staffordshire	AIX5	84	84	83	81	80	79	79	79	78	78
West Midlands	AIX6	99	100	99	98	98	98	97	96	95	95
East of England	IPLL	96	96	95	95	95	95	95	95	96	95
East Anglia	AIX7	96	93	91	90	90	91	91	91	91	91
Bedfordshire and Hertfordshire	AIX8	109	110	113	114	115	114	113	112	113	112
Essex	AIX9	84	84	84	83	82	82	83	84	84	84
London	IPLM	147	149	152	153	153	151	153	154	155	155
Inner London	AIY2	232	236	239	241	240	239	246	249	251	252
Outer London	AIY3	95	96	97	98	97	95	93	92	92	92
South East	IPLN	104	105	106	108	109	110	109	109	109	109
Berkshire, Buckinghamshire and Oxfordshire	AIY4	126	128	134	138	140	141	140	141	142	141
Surrey, East and West Sussex	AIY5	105	105	106	107	108	109	109	107	106	105
Hampshire and Isle of Wight	AIY6	96	96	97	97	97	98	98	98	99	100
Kent	AIY7	83	82	82	82	82	82	82	82	82	83
South West	IGBF	93	93	93	93	93	93	93	94	94	94
Gloucestershire, Wiltshire and North Somerset	AIY8	110	112	113	112	112	113	114	115	115	114
Dorset and Somerset	AIY9	83	82	82	84	84	83	82	82	83	83
Cornwall and Isles of Scilly	AIZ2	62	61	60	60	62	63	64	65	65	65
Devon	AIZ3	85	82	79	79	78	78	78	78	78	78
Wales	IGBH	83	81	79	79	78	78	78	78	77	77
West Wales and the Valleys	AIZ4	73	71	68	66	66	66	65	65	65	65
East Wales	AIZ5	100	100	99	100	100	101	101	100	99	99
Scotland	IGBI	99	98	96	95	95	94	94	94	94	95
North Eastern Scotland	AIZ6	138	136	135	133	133	132	130	127	126	125
Eastern Scotland	AIZ7	103	101	99	97	96	95	96	97	97	98
South Western Scotland	AIZ8	91	91	90	89	89	89	88	89	89	90
Highlands and Islands	AIZ9	73	71	69	69	70	70	71	73	74	74
Northern Ireland	IGBJ	81	81	81	81	81	81	81	81	81	81

1 The headline GVA series for this publication have been calculated using a five-period moving average.

2 Estimates of workplace based GVA allocate income to the region in which commuters work.

3 Provisional.

NUTS3.1 ¹Headline ^{2,3}Gross Value Added (GVA) by NUTS3 area at current basic prices by region

£million

		1996	1997	1998	1999	2000	2001	2002	2003	2004	2005 ⁴
NUTS Level 1											
NUTS Level 2											
NUTS Level 3											
UNITED KINGDOM	ABML	685 589	725 311	768 594	805 989	846 683	889 063	937 323	993 507	1 051 934	1 096 629
United Kingdom less Extra Regio	IGAE	669 179	710 537	756 020	791 720	824 775	868 373	917 233	973 512	1 031 362	1 073 891
England	IGAA	568 234	604 834	645 530	677 499	706 481	744 704	787 128	835 718	885 551	921 842
North East	IFZR	24 482	25 487	26 576	27 344	28 251	29 609	31 054	32 934	35 058	36 763
Tees Valley and Durham	AIM6	10 870	11 211	11 551	11 800	12 045	12 411	12 808	13 495	14 384	15 113
Hartlepool and Stockton-on-Tees	AZW4	2 949	3 027	3 093	3 161	3 205	3 252	3 309	3 480	3 738	3 980
South Teesside	AZW5	2 574	2 696	2 797	2 828	2 818	2 845	2 951	3 170	3 458	3 675
Darlington	AZW6	1 140	1 181	1 212	1 255	1 313	1 409	1 484	1 564	1 639	1 699
Durham CC	AZW7	4 207	4 308	4 449	4 557	4 709	4 904	5 065	5 281	5 549	5 759
Northumberland and Tyne and Wear	AIM7	13 611	14 275	15 025	15 545	16 207	17 198	18 246	19 439	20 674	21 650
Northumberland	AZW8	2 617	2 660	2 725	2 747	2 830	2 994	3 206	3 415	3 606	3 743
Tyneside	AZW9	8 276	8 754	9 281	9 678	10 124	10 753	11 388	12 148	12 948	13 603
Sunderland	AZX2	2 719	2 861	3 019	3 120	3 253	3 451	3 652	3 875	4 120	4 304
North West	IFZS	70 713	74 236	78 226	81 402	84 308	88 435	92 639	97 707	103 035	106 501
Cumbria	AIM8	5 098	5 208	5 292	5 301	5 306	5 461	5 708	6 078	6 450	6 687
West Cumbria	AZX3	2 374	2 446	2 490	2 475	2 437	2 462	2 514	2 597	2 674	2 747
East Cumbria	AZX4	2 724	2 762	2 802	2 826	2 869	2 999	3 194	3 481	3 776	3 940
Cheshire	AIM9	12 784	13 577	14 313	14 905	15 408	16 160	16 849	17 678	18 600	19 306
Halton and Warrington	AZX5	3 957	4 235	4 517	4 688	4 855	5 151	5 446	5 805	6 135	6 396
Cheshire CC	AZX6	8 827	9 342	9 796	10 217	10 553	11 009	11 403	11 873	12 465	12 911
Greater Manchester	AIN2	27 100	28 633	30 463	31 897	33 107	34 714	36 340	38 442	40 685	42 082
Greater Manchester South	AZX7	16 467	17 750	19 254	20 510	21 551	22 795	24 027	25 491	27 011	27 925
Greater Manchester North	AZX8	10 633	10 884	11 209	11 387	11 556	11 919	12 313	12 952	13 674	14 157
Lancashire	AIN3	14 306	14 781	15 402	16 033	16 707	17 592	18 403	19 364	20 398	21 073
Blackburn with Darwen	AZX9	1 485	1 510	1 541	1 563	1 593	1 647	1 710	1 798	1 899	1 963
Blackpool	AZY2	1 293	1 322	1 365	1 407	1 446	1 494	1 544	1 604	1 674	1 716
Lancashire CC	AZY3	11 528	11 950	12 496	13 064	13 668	14 450	15 148	15 961	16 825	17 394
Merseyside	AIN4	11 425	12 036	12 756	13 266	13 781	14 508	15 338	16 146	16 902	17 352
East Merseyside	AZY4	2 446	2 545	2 673	2 802	2 994	3 234	3 461	3 634	3 803	3 906
Liverpool	AZY5	4 567	4 874	5 228	5 445	5 585	5 815	6 146	6 543	6 910	7 133
Sefton	AZY6	2 191	2 262	2 352	2 437	2 546	2 697	2 860	2 989	3 098	3 154
Wirral	AZY7	2 222	2 355	2 503	2 583	2 656	2 762	2 871	2 981	3 091	3 159
Yorkshire and the Humber	IFZT	51 319	54 179	57 014	58 897	61 034	64 192	67 802	71 813	75 823	78 513
East Riding and North Lincolnshire	AIN5	9 502	9 823	9 991	10 002	10 249	10 757	11 390	12 071	12 768	13 155
Kingston upon Hull, City of	AZY8	2 817	2 890	2 961	3 026	3 171	3 355	3 540	3 727	3 924	4 034
East Riding of Yorkshire	AZY9	2 888	2 948	2 976	2 979	3 082	3 285	3 545	3 787	4 009	4 120
North and North East Lincolnshire	AZZ2	3 798	3 985	4 054	3 997	3 996	4 117	4 304	4 558	4 835	5 001
North Yorkshire	AIN6	7 923	8 326	8 759	9 112	9 551	10 156	10 840	11 520	12 147	12 478
York	AZZ3	2 307	2 492	2 667	2 797	2 932	3 090	3 266	3 430	3 608	3 692
North Yorkshire CC	AZZ4	5 616	5 834	6 092	6 315	6 619	7 066	7 573	8 090	8 538	8 786
South Yorkshire	AIN7	11 118	11 790	12 498	12 885	13 359	14 056	14 946	15 967	17 005	17 660
Barnsley, Doncaster and Rotherham	AZZ5	5 879	6 211	6 568	6 758	7 004	7 366	7 855	8 436	9 026	9 395
Sheffield	AZZ6	5 240	5 578	5 930	6 127	6 354	6 689	7 091	7 531	7 979	8 265
West Yorkshire	AIN8	22 776	24 240	25 766	26 898	27 875	29 224	30 627	32 254	33 903	35 219
Bradford	AZZ7	4 668	4 949	5 254	5 468	5 643	5 853	6 042	6 235	6 443	6 623
Leeds	AZZ8	9 372	10 025	10 696	11 260	11 753	12 431	13 130	13 912	14 671	15 268
Calderdale, Kirklees and Wakefield	AZZ9	8 735	9 266	9 816	10 171	10 479	10 940	11 456	12 107	12 789	13 328
East Midlands	IFZU	44 747	47 365	49 774	51 520	53 396	56 477	59 734	63 744	67 755	70 569
Derbyshire and Nottinghamshire	AIN9	20 888	22 071	23 085	23 925	24 852	26 302	27 707	29 508	31 403	32 805
Derby	DMRI	2 886	3 322	3 729	4 043	4 229	4 408	4 537	4 703	4 931	5 095
East Derbyshire	DMTE	2 068	2 191	2 326	2 451	2 606	2 836	3 052	3 275	3 476	3 619
South and West Derbyshire	DMTF	5 012	5 201	5 241	5 273	5 334	5 577	5 850	6 229	6 624	6 886
Nottingham	DMTG	4 533	4 659	4 759	4 841	5 019	5 350	5 694	6 156	6 622	6 957
North Nottinghamshire	DMXA	3 893	4 063	4 216	4 329	4 485	4 734	4 999	5 340	5 702	6 003
South Nottinghamshire	DMXB	2 496	2 636	2 813	2 988	3 179	3 397	3 576	3 805	4 048	4 246
Leicestershire, Rutland and Northamptonshire	AIO2	17 787	19 040	20 309	21 085	21 786	22 873	24 174	25 840	27 551	28 763
Leicester	DMXC	3 746	3 971	4 208	4 346	4 479	4 678	4 918	5 219	5 544	5 781
Leicestershire CC and Rutland	DMXD	7 125	7 486	7 744	7 792	7 926	8 330	8 880	9 585	10 288	10 777
Northamptonshire	DMXE	6 916	7 583	8 358	8 947	9 381	9 866	10 376	11 036	11 719	12 205
Lincolnshire	AIO3	6 072	6 253	6 380	6 510	6 758	7 303	7 853	8 396	8 801	9 001

1 The headline GVA series for this publication have been calculated using a five-period moving average.

2 Estimates of workplace based GVA allocate income to the region in which commuters work.

3 Components may not sum to totals as a result of rounding.

4 Provisional.

5 The GVA for Extra-Regio comprises compensation of employees and gross operating surplus which cannot be assigned to regions.

NUTS3.1 ¹Headline ^{2,3}Gross Value Added (GVA) by NUTS3 area at current basic prices by region

continued

£million

		1996	1997	1998	1999	2000	2001	2002	2003	2004	2005 ⁴
NUTS Level 1											
NUTS Level 2											
NUTS Level 3											
West Midlands	IFZV	56 406	59 783	63 129	65 442	67 786	70 973	74 109	77 828	81 791	84 758
Herefordshire, Worcestershire and Warwickshire	AIO4	12 594	13 346	14 259	15 071	15 789	16 579	17 227	18 175	19 254	20 057
Herefordshire County of	DMXG	1 702	1 735	1 777	1 845	1 907	2 006	2 091	2 225	2 373	2 481
Worcestershire	DMXH	5 175	5 378	5 750	6 129	6 470	6 783	7 073	7 525	8 029	8 367
Warwickshire	DMXI	5 717	6 232	6 733	7 097	7 413	7 791	8 063	8 425	8 852	9 209
Shropshire and Staffordshire	AIO5	14 195	15 018	15 780	16 125	16 549	17 245	18 172	19 238	20 354	20 963
Telford and Wrekin	DMXJ	1 870	1 992	2 094	2 128	2 160	2 226	2 327	2 448	2 587	2 660
Shropshire CC	DMXK	2 469	2 576	2 710	2 810	2 925	3 098	3 330	3 588	3 839	3 975
Stoke-on-Trent	DMXL	2 709	2 800	2 853	2 808	2 801	2 860	2 959	3 105	3 257	3 351
Staffordshire CC	DMXM	7 146	7 650	8 123	8 379	8 662	9 061	9 556	10 096	10 670	10 977
West Midlands	AIO6	29 617	31 419	33 090	34 246	35 449	37 149	38 711	40 414	42 183	43 738
Birmingham	DMXN	11 804	12 628	13 470	14 136	14 745	15 577	16 202	16 845	17 463	18 038
Solihull	DMXO	2 136	2 310	2 567	2 757	3 018	3 341	3 654	3 910	4 130	4 288
Coventry	DMXP	3 845	4 227	4 483	4 644	4 709	4 816	4 937	5 138	5 350	5 538
Dudley and Sandwell	DMXQ	6 401	6 612	6 768	6 821	6 967	7 221	7 496	7 807	8 158	8 484
Walsall and Wolverhampton	DMXR	5 431	5 643	5 802	5 887	6 010	6 193	6 421	6 714	7 081	7 389
East of England	IGLF	57 903	61 376	65 438	68 520	71 524	75 536	79 865	85 360	90 895	94 463
East Anglia	AIO7	23 295	24 238	25 359	26 291	27 378	29 025	30 875	33 135	35 307	36 735
Peterborough	HFTS	1 995	2 138	2 282	2 366	2 425	2 549	2 728	2 971	3 211	3 358
Cambridgeshire CC	HFTT	6 388	6 797	7 265	7 664	8 096	8 717	9 373	10 105	10 737	11 127
Norfolk	HFTU	7 723	7 992	8 329	8 592	8 831	9 233	9 742	10 469	11 193	11 687
Suffolk	HFTV	7 189	7 311	7 483	7 668	8 026	8 525	9 031	9 590	10 166	10 563
Bedfordshire and Hertfordshire	AIO8	19 348	20 942	22 904	24 346	25 624	26 963	28 146	29 786	31 655	32 835
Luton	HFTW	2 167	2 318	2 474	2 583	2 661	2 780	2 874	3 033	3 207	3 326
Bedfordshire CC	HFTX	4 130	4 271	4 456	4 574	4 718	4 917	5 164	5 531	5 953	6 218
Hertfordshire	HFTY	13 051	14 353	15 974	17 189	18 245	19 266	20 109	21 222	22 495	23 292
Essex	AIO9	15 261	16 195	17 175	17 883	18 522	19 547	20 844	22 439	23 934	24 893
Southend-on-Sea	HFTZ	1 440	1 546	1 663	1 745	1 807	1 886	1 983	2 089	2 193	2 253
Thurrock	HFUA	1 561	1 685	1 782	1 809	1 783	1 786	1 846	1 972	2 120	2 216
Essex CC	HFUB	12 260	12 965	13 731	14 330	14 931	15 875	17 014	18 379	19 621	20 424
London	IGLG	118 080	127 433	138 566	147 632	154 667	162 626	174 118	185 427	196 855	206 324
Inner London	AIP2	70 892	76 712	83 556	89 512	94 289	100 382	109 774	117 820	125 490	132 438
Inner London - West	HFUC	46 768	50 927	55 729	59 564	62 264	65 554	71 080	75 687	80 347	84 724
Inner London - East	HFUD	24 125	25 785	27 827	29 948	32 025	34 828	38 694	42 133	45 144	47 714
Outer London	AIP3	47 187	50 720	55 011	58 120	60 378	62 244	64 345	67 608	71 365	73 886
Outer London - East and North East	HFUE	13 077	13 703	14 543	15 091	15 487	15 837	16 347	17 366	18 549	19 379
Outer London - South	HFUF	12 149	12 680	13 395	13 923	14 360	14 843	15 518	16 526	17 617	18 301
Outer London - West and North West	HFUG	21 961	24 338	27 073	29 106	30 530	31 564	32 480	33 715	35 198	36 206
South East	IGLH	93 219	100 228	108 621	115 606	121 600	129 085	135 998	144 300	152 788	159 062
Berkshire, Buckinghamshire and Oxfordshire	AIP4	29 496	32 146	35 800	38 714	41 021	43 457	45 660	48 663	51 835	54 049
Berkshire	HFUH	12 449	13 846	15 668	17 135	18 210	19 293	20 152	21 367	22 662	23 631
Milton Keynes	HFUI	3 073	3 369	3 723	3 993	4 232	4 553	4 895	5 307	5 716	5 963
Buckinghamshire CC	HFUJ	6 282	6 676	7 275	7 715	8 097	8 453	8 799	9 335	9 973	10 440
Oxfordshire	HFUK	7 691	8 255	9 132	9 871	10 482	11 159	11 814	12 654	13 485	14 016
Surrey, East and West Sussex	AIP5	29 891	32 119	34 424	36 575	38 531	41 027	43 136	45 197	47 170	48 743
Brighton and Hove	HFUL	2 667	2 751	2 830	2 972	3 185	3 481	3 722	3 938	4 134	4 302
East Sussex CC	HFUM	4 365	4 474	4 546	4 657	4 809	5 064	5 323	5 636	5 977	6 222
Surrey	HFUN	13 892	15 393	17 010	18 454	19 572	20 845	21 912	23 020	24 049	24 877
West Sussex	HFUO	8 967	9 502	10 038	10 493	10 965	11 636	12 180	12 603	13 010	13 342
Hampshire and Isle of Wight	AIP6	19 161	20 501	22 006	23 058	24 063	25 565	27 093	28 958	30 865	32 300
Portsmouth	HFUP	2 272	2 436	2 616	2 734	2 874	3 079	3 270	3 458	3 642	3 774
Southampton	HFUQ	2 839	3 045	3 228	3 315	3 362	3 532	3 791	4 081	4 361	4 539
Hampshire CC	HFUR	13 166	14 105	15 181	15 952	16 678	17 713	18 724	20 030	21 384	22 435
Isle of Wight	HFUS	884	916	981	1 058	1 149	1 240	1 308	1 388	1 478	1 552
Kent	AIP7	14 671	15 461	16 391	17 259	17 986	19 036	20 108	21 483	22 918	23 969
Medway	C22Q	1 812	1 938	2 115	2 253	2 355	2 466	2 569	2 698	2 839	2 961
Kent CC	C22R	12 859	13 523	14 277	15 005	15 631	16 571	17 540	18 785	20 079	21 008

See footnotes on first page of table.

NUTS3.1 ¹Headline Gross Value Added (GVA)^{2,3} by NUTS3 area at current basic prices by region

continued

£million

		1996	1997	1998	1999	2000	2001	2002	2003	2004	2005 ⁴
NUTS Level 1											
NUTS Level 2											
NUTS Level 3											
South West	IFZZ	51 366	54 748	58 187	61 136	63 915	67 771	71 809	76 605	81 551	84 889
Gloucestershire, Wiltshire and North Somerset	AIP8	26 724	28 882	31 101	32 598	34 026	36 137	38 580	41 198	43 730	45 443
Bristol City of	C22S	5 953	6 513	7 066	7 367	7 603	7 989	8 418	8 822	9 214	9 506
North and North East Somerset, South Gloucestershire	C22T	6 768	7 301	7 889	8 309	8 774	9 427	10 219	11 092	11 934	12 521
Gloucestershire	C22U	6 281	6 772	7 317	7 759	8 191	8 815	9 524	10 272	10 919	11 320
Swindon	C22V	3 081	3 432	3 771	3 940	4 038	4 152	4 328	4 561	4 852	5 046
Wiltshire CC	C22W	4 640	4 865	5 058	5 223	5 420	5 754	6 092	6 452	6 811	7 050
Dorset and Somerset	AIP9	10 993	11 679	12 458	13 263	13 899	14 572	15 205	16 143	17 246	18 059
Bournemouth and Poole	C22X	2 997	3 304	3 634	3 906	4 106	4 313	4 490	4 724	4 975	5 173
Dorset CC	C22Y	3 310	3 433	3 603	3 819	4 001	4 199	4 381	4 657	4 990	5 237
Somerset	C22Z	4 685	4 942	5 221	5 539	5 791	6 060	6 334	6 762	7 281	7 649
Cornwall and Isles of Scilly	AIQ2	3 447	3 613	3 796	4 019	4 287	4 659	5 019	5 425	5 797	6 003
Devon	AIQ3	10 203	10 573	10 831	11 255	11 703	12 403	13 005	13 839	14 778	15 384
Plymouth	C233	2 569	2 683	2 723	2 805	2 891	3 048	3 166	3 336	3 539	3 674
Torbay	C234	1 176	1 204	1 213	1 229	1 239	1 255	1 261	1 323	1 419	1 494
Devon CC	C235	6 458	6 686	6 895	7 222	7 573	8 100	8 579	9 181	9 819	10 215
Wales	IGAB	27 518	28 672	29 787	30 736	31 898	33 525	35 252	37 262	39 340	40 711
West Wales and the Valleys	AIQ4	15 599	16 038	16 362	16 610	17 109	17 861	18 750	19 840	21 024	21 793
Isle of Anglesey	C236	421	434	446	467	494	531	556	589	619	646
Gwynedd	C237	1 057	1 057	1 045	1 042	1 074	1 160	1 263	1 370	1 452	1 499
Conwy and Denbighshire	C238	1 617	1 656	1 690	1 723	1 801	1 908	2 046	2 198	2 356	2 456
South West Wales	C239	2 866	2 894	2 909	2 974	3 086	3 210	3 356	3 587	3 848	4 027
Central Valleys	C23A	2 357	2 445	2 509	2 528	2 604	2 746	2 910	3 050	3 184	3 254
Gwent Valleys	C23B	2 568	2 658	2 763	2 827	2 884	2 932	2 981	3 099	3 285	3 409
Bridgend and Neath Port Talbot	C23C	2 617	2 709	2 703	2 646	2 629	2 697	2 820	2 979	3 142	3 264
Swansea	C23D	2 095	2 185	2 296	2 404	2 536	2 678	2 818	2 968	3 137	3 238
East Wales	AIQ5	11 919	12 634	13 425	14 125	14 790	15 664	16 502	17 422	18 316	18 918
Monmouthshire and Newport	C23E	2 298	2 472	2 715	2 923	3 073	3 237	3 381	3 617	3 864	4 052
Cardiff and Vale of Glamorgan	C23F	5 051	5 375	5 769	6 180	6 599	7 160	7 681	8 201	8 671	8 978
Flintshire and Wrexham	C23G	3 405	3 587	3 692	3 754	3 818	3 912	3 994	4 068	4 188	4 269
Powys	C23H	1 165	1 200	1 249	1 269	1 300	1 355	1 446	1 536	1 593	1 620
Scotland	IGAC	57 932	60 620	63 178	65 109	67 186	69 994	73 689	78 066	82 538	86 321
North Eastern Scotland	AIQ6	8 078	8 432	8 817	9 057	9 431	9 772	10 061	10 433	10 861	11 247
Aberdeen City, Aberdeenshire and North East Moray	C23I	8 078	8 432	8 817	9 057	9 431	9 772	10 061	10 433	10 861	11 247
Eastern Scotland	AIQ7	22 339	23 344	24 252	24 873	25 550	26 608	28 368	30 214	32 058	33 674
Angus and Dundee City	C23J	2 848	2 922	2 995	3 019	3 035	3 103	3 277	3 502	3 709	3 894
Clackmannanshire and Fife	C23K	3 490	3 616	3 734	3 828	3 940	4 088	4 303	4 542	4 797	5 027
East Lothian and Midlothian	C23L	1 303	1 351	1 406	1 449	1 490	1 552	1 657	1 780	1 892	2 001
Scottish Borders	C23M	989	991	997	1 004	1 017	1 045	1 102	1 174	1 230	1 291
Edinburgh, City of	C23N	7 676	8 128	8 616	8 987	9 445	10 076	10 962	11 714	12 436	13 017
Falkirk	C23O	1 650	1 718	1 718	1 711	1 727	1 787	1 899	1 999	2 113	2 203
Perth & Kinross and Stirling	C23P	2 341	2 431	2 511	2 543	2 572	2 646	2 812	3 015	3 210	3 399
West Lothian	C23Q	2 042	2 187	2 275	2 332	2 324	2 311	2 355	2 488	2 671	2 841
South Western Scotland	AIQ8	24 399	25 636	26 774	27 704	28 583	29 813	31 219	33 028	34 881	36 428
East and West Dunbartonshire and Helensburgh & Lomond	C23R	1 712	1 785	1 863	1 925	1 995	2 069	2 168	2 262	2 364	2 421
Dumfries and Galloway	C23S	1 375	1 383	1 412	1 470	1 541	1 610	1 671	1 732	1 780	1 833
East Ayrshire and North Ayrshire Mainland	C23T	2 294	2 371	2 396	2 416	2 413	2 458	2 517	2 644	2 772	2 892
Glasgow City	C23U	8 431	9 017	9 587	10 081	10 516	11 170	11 853	12 689	13 465	14 108
Inverclyde, East Renfrewshire and Renfrewshire	C23V	4 006	4 165	4 213	4 180	4 142	4 135	4 199	4 351	4 592	4 790
North Lanarkshire	C23W	2 638	2 745	2 853	2 952	3 105	3 340	3 605	3 893	4 148	4 356
South Ayrshire	C23X	1 175	1 228	1 285	1 334	1 383	1 424	1 475	1 534	1 613	1 674
South Lanarkshire	C23Y	2 767	2 944	3 166	3 345	3 488	3 608	3 732	3 922	4 147	4 354
Highlands and Islands	AIQ9	3 116	3 207	3 336	3 475	3 622	3 800	4 041	4 391	4 738	4 973
Caitness & Sutherland and Ross & Cromarty	C23Z	629	642	668	700	737	786	845	919	982	1 023
Inverness & Nairn and West Moray, Badenoch & Strathspey	C242	971	1 009	1 061	1 120	1 196	1 292	1 414	1 561	1 699	1 777
Lochaber, Skye & Lochalsh and Argyll and the Islands	C243	847	864	895	934	965	989	1 012	1 066	1 130	1 179
Eilean Siar (Western Isles)	C244	206	216	227	236	238	245	261	291	322	344
Orkney Islands	C245	210	212	212	210	209	209	218	238	259	278
Shetland Islands	C246	254	265	272	276	277	278	291	317	346	372
Northern Ireland	IGAD	15 496	16 412	17 526	18 377	19 210	20 150	21 164	22 466	23 933	25 017
Belfast	C247	4 227	4 633	5 029	5 350	5 560	5 821	6 083	6 459	6 877	7 180
Outer Belfast	C248	2 649	2 830	3 035	3 222	3 415	3 618	3 785	3 963	4 171	4 340
East of Northern Ireland	C249	3 611	3 758	3 963	4 142	4 345	4 540	4 746	5 024	5 360	5 598
North of Northern Ireland	C24A	2 130	2 239	2 387	2 480	2 566	2 660	2 772	2 921	3 086	3 205
West and South of Northern Ireland	C24B	2 878	2 952	3 112	3 182	3 324	3 512	3 779	4 099	4 439	4 695
Extra-Regio ⁵	IGAF	16 411	14 774	12 574	14 269	21 908	20 690	20 090	19 995	20 572	23 657

See footnotes on first page of table.

NUTS3.2 ¹Headline Gross Value Added (GVA)² per head by NUTS3 area at current basic prices

£ per head

		1996	1997	1998	1999	2000	2001	2002	2003	2004	2005 ³
NUTS Level 1											
NUTS Level 2											
NUTS Level 3											
UNITED KINGDOM	IGAH	11 787	12 438	13 144	13 734	14 378	15 040	15 800	16 682	17 577	18 205
England	IGAR	11 712	12 429	13 222	13 817	14 350	15 060	15 853	16 759	17 672	18 267
North East	IGAI	9 502	9 924	10 378	10 722	11 108	11 657	12 221	12 959	13 791	14 419
Tees Valley and Durham	AIR2	9 423	9 742	10 047	10 284	10 501	10 831	11 174	11 759	12 508	13 097
Hartlepool and Stockton-on-Tees	C24C	11 001	11 297	11 493	11 684	11 767	11 870	12 013	12 578	13 471	14 286
South Teesside	C24D	8 970	9 453	9 835	10 008	10 013	10 148	10 574	11 398	12 443	13 214
Darlington	C24E	11 447	11 909	12 211	12 779	13 382	14 398	15 123	15 915	16 653	17 199
Durham CC	C24F	8 433	8 640	8 952	9 185	9 511	9 934	10 260	10 679	11 185	11 554
Northumberland and Tyne and Wear	AIR3	9 566	10 073	10 647	11 080	11 606	12 336	13 082	13 946	14 849	15 511
Northumberland	C24G	8 556	8 672	8 868	8 933	9 207	9 740	10 414	11 071	11 661	12 080
Tyneside	C24H	10 033	10 680	11 399	11 978	12 602	13 404	14 175	15 135	16 153	16 898
Sunderland	C24I	9 304	9 838	10 422	10 853	11 385	12 127	12 883	13 709	14 640	15 321
North West	IGAJ	10 384	10 926	11 517	12 018	12 445	13 057	13 667	14 368	15 109	15 571
Cumbria	AIR4	10 473	10 669	10 821	10 859	10 882	11 196	11 685	12 376	13 045	13 491
West Cumbria	C24J	9 993	10 310	10 524	10 471	10 365	10 486	10 723	11 045	11 324	11 629
East Cumbria	C24K	10 931	11 009	11 099	11 225	11 363	11 854	12 574	13 600	14 619	15 187
Cheshire	AIR5	13 077	13 858	14 575	15 203	15 688	16 423	17 104	17 871	18 732	19 367
Halton and Warrington	C24L	12 762	13 671	14 582	15 129	15 673	16 630	17 580	18 692	19 711	20 466
Cheshire CC	C24M	13 224	13 944	14 572	15 237	15 695	16 328	16 885	17 495	18 285	18 865
Greater Manchester	AIR6	10 706	11 354	12 079	12 680	13 157	13 797	14 432	15 208	16 059	16 546
Greater Manchester South	C24N	12 063	13 075	14 204	15 206	15 974	16 914	17 821	18 818	19 871	20 422
Greater Manchester North	C24O	9 117	9 347	9 610	9 760	9 900	10 201	10 526	11 039	11 645	12 039
Lancashire	AIR7	10 131	10 471	10 903	11 364	11 814	12 412	12 942	13 533	14 170	14 568
Blackburn with Darwen	C24P	10 704	10 880	11 039	11 306	11 526	11 898	12 274	12 844	13 485	13 902
Blackpool	C24Q	8 762	9 085	9 470	9 839	10 111	10 503	10 852	11 246	11 711	11 990
Lancashire CC	C24R	10 239	10 599	11 069	11 564	12 064	12 714	13 284	13 901	14 557	14 966
Merseyside	AIR8	8 150	8 641	9 200	9 626	10 029	10 607	11 242	11 858	12 436	12 784
East Merseyside	C24S	7 408	7 722	8 113	8 526	9 122	9 858	10 562	11 089	11 596	11 878
Liverpool	C24T	9 898	10 679	11 535	12 142	12 522	13 161	13 949	14 909	15 807	16 321
Sefton	C24U	7 619	7 895	8 248	8 575	8 985	9 533	10 158	10 635	11 041	11 299
Wirral	C24V	6 884	7 350	7 855	8 148	8 391	8 767	9 127	9 492	9 861	10 115
Yorkshire and the Humber	IGAK	10 344	10 928	11 500	11 883	12 309	12 899	13 555	14 284	14 973	15 372
East Riding and North Lincolnshire	AIR9	10 795	11 185	11 397	11 431	11 728	12 284	12 926	13 589	14 254	14 599
Kingston upon Hull, City of	C24W	10 641	11 035	11 400	11 826	12 569	13 424	14 154	14 830	15 498	15 836
East Riding of Yorkshire	C24X	9 494	9 650	9 699	9 637	9 893	10 432	11 121	11 744	12 288	12 516
North and North East Lincolnshire	C24Y	12 197	12 821	13 074	12 894	12 887	13 242	13 785	14 489	15 286	15 765
North Yorkshire	AIS2	10 880	11 398	11 927	12 327	12 825	13 516	14 329	15 111	15 771	16 060
York	C24Z	13 221	14 241	15 131	15 789	16 368	17 043	17 932	18 627	19 279	19 469
North Yorkshire CC	C252	10 143	10 503	10 915	11 236	11 703	12 395	13 186	13 991	14 644	14 959
South Yorkshire	AIS3	8 695	9 238	9 813	10 146	10 549	11 098	11 767	12 539	13 293	13 715
Barnsley, Doncaster and Rotherham	C253	7 730	8 187	8 688	8 968	9 317	9 778	10 383	11 100	11 840	12 277
Sheffield	C254	10 113	10 779	11 457	11 866	12 349	13 037	13 804	14 668	15 436	15 823
West Yorkshire	AIS4	10 980	11 695	12 429	12 980	13 442	14 029	14 626	15 334	16 001	16 444
Bradford	C255	9 916	10 547	11 226	11 710	12 081	12 433	12 757	13 078	13 383	13 572
Leeds	C256	13 094	13 996	14 940	15 751	16 475	17 371	18 236	19 251	20 122	20 613
Calderdale, Kirklees and Wakefield	C257	9 840	10 444	11 040	11 422	11 733	12 200	12 723	13 393	14 081	14 598
East Midlands	IGAL	10 892	11 495	12 044	12 407	12 811	13 480	14 150	14 984	15 789	16 307
Derbyshire and Nottinghamshire	AIS5	10 603	11 193	11 690	12 096	12 559	13 261	13 889	14 701	15 537	16 123
Derby	C258	12 590	14 412	16 149	17 482	18 324	19 105	19 553	20 188	21 067	21 676
East Derbyshire	C259	7 727	8 222	8 731	9 190	9 764	10 598	11 365	12 136	12 835	13 328
South and West Derbyshire	C25A	11 067	11 428	11 423	11 428	11 471	11 937	12 445	13 181	13 935	14 389
Nottingham	C25B	16 383	16 722	17 159	17 697	18 538	19 891	20 962	22 380	23 774	24 563
North Nottinghamshire	C25C	9 286	9 715	10 102	10 287	10 642	11 172	11 722	12 415	13 135	13 743
South Nottinghamshire	C25D	7 695	8 163	8 687	9 216	9 812	10 448	10 960	11 651	12 331	12 883
Leicestershire, Rutland and Northamptonshire	AIS6	11 695	12 466	13 257	13 676	14 064	14 675	15 398	16 341	17 275	17 840
Leicester	C25E	12 872	13 711	14 509	15 198	15 782	16 543	17 411	18 488	19 558	20 191
Leicestershire CC and Rutland	C25F	11 377	11 919	12 360	12 270	12 389	12 917	13 671	14 656	15 579	16 170
Northamptonshire	C25G	11 459	12 439	13 581	14 414	14 998	15 635	16 265	17 109	18 000	18 506
Lincolnshire	AIS7	9 837	10 067	10 191	10 289	10 557	11 276	11 957	12 612	13 032	13 227

1 The headline GVA series for this publication have been calculated using a five-period moving average.

2 Estimates of workplace based GVA allocate income to the region in which commuters work.

3 Provisional.

4 The GVA for Extra-Regio comprises compensation of employees and gross operating surplus which cannot be assigned to regions.

NUTS3.2 Headline¹ Gross Value Added (GVA)² per head by NUTS3 area at current basic prices

continued

£ per head

		1996	1997	1998	1999	2000	2001	2002	2003	2004	2005 ³
NUTS Level 1											
NUTS Level 2											
NUTS Level 3											
West Midlands	IGAM	10 717	11 361	11 976	12 413	12 864	13 440	13 996	14 652	15 355	15 841
Herefordshire, Worcestershire and Warwickshire	AIS8	10 582	11 140	11 829	12 467	13 001	13 553	14 025	14 723	15 532	16 085
Herefordshire County of	C25I	10 216	10 302	10 392	10 726	10 982	11 468	11 923	12 634	13 421	13 990
Worcestershire	C25J	9 786	10 095	10 740	11 406	11 989	12 509	13 002	13 774	14 644	15 192
Warwickshire	C25K	11 557	12 545	13 490	14 207	14 790	15 391	15 841	16 454	17 204	17 748
Shropshire and Staffordshire	AIS9	9 676	10 197	10 667	10 889	11 153	11 579	12 171	12 834	13 526	13 885
Telford and Wrekin	C25L	12 785	13 311	13 694	13 842	13 858	14 039	14 582	15 285	16 053	16 457
Shropshire CC	C25M	8 946	9 377	9 771	10 062	10 393	10 938	11 714	12 548	13 363	13 810
Stoke-on-Trent	C25N	10 882	11 319	11 630	11 502	11 577	11 895	12 360	12 999	13 623	14 001
Staffordshire CC	C25O	8 981	9 549	10 107	10 426	10 767	11 226	11 801	12 403	13 056	13 372
West Midlands	AIT2	11 365	12 124	12 793	13 262	13 786	14 466	15 040	15 676	16 336	16 861
Birmingham	C25P	11 791	12 708	13 587	14 283	14 968	15 820	16 385	16 988	17 542	17 984
Solihull	C25Q	10 673	11 509	12 787	13 772	15 164	16 743	18 276	19 503	20 491	21 206
Coventry	C25R	12 547	13 871	14 700	15 235	15 538	15 904	16 282	16 881	17 621	18 145
Dudley and Sandwell	C25S	10 749	11 153	11 433	11 542	11 814	12 247	12 704	13 226	13 813	14 331
Walsall and Wolverhampton	C25T	10 800	11 297	11 661	11 857	12 156	12 605	13 058	13 662	14 423	15 031
East of England	IGLI	11 065	11 653	12 342	12 835	13 307	13 987	14 701	15 592	16 494	16 980
East Anglia	AIT3	11 021	11 380	11 818	12 184	12 593	13 310	14 063	14 924	15 750	16 196
Peterborough	C25U	12 615	13 672	14 642	15 117	15 486	16 192	17 219	18 574	19 885	20 598
Cambridgeshire CC	C25V	12 043	12 612	13 331	13 997	14 683	15 715	16 764	17 770	18 687	19 081
Norfolk	C25W	10 039	10 320	10 666	10 925	11 129	11 562	12 101	12 884	13 670	14 150
Suffolk	C25X	10 964	11 076	11 269	11 491	11 935	12 726	13 424	14 123	14 800	15 176
Bedfordshire and Hertfordshire	AIT4	12 500	13 439	14 592	15 376	16 081	16 815	17 455	18 377	19 472	20 051
Luton	C25Y	11 933	12 726	13 426	13 962	14 345	14 956	15 424	16 308	17 337	17 844
Bedfordshire CC	C25Z	11 358	11 654	12 078	12 217	12 476	12 869	13 338	14 109	15 040	15 554
Hertfordshire	C262	13 017	14 215	15 716	16 786	17 717	18 605	19 354	20 351	21 530	22 153
Essex	AIT5	9 712	10 259	10 825	11 195	11 522	12 094	12 828	13 735	14 562	15 020
Southend-on-Sea	C263	8 814	9 363	10 150	10 712	11 186	11 761	12 347	13 040	13 772	14 142
Thurrock	C264	11 588	12 449	12 849	12 969	12 601	12 466	12 816	13 563	14 513	15 019
Essex CC	C265	9 629	10 143	10 692	11 065	11 447	12 094	12 888	13 838	14 661	15 123
London	IGLJ	16 930	18 166	19 612	20 637	21 372	22 209	23 652	25 180	26 641	27 672
Inner London	AIT6	26 688	28 706	30 956	32 542	33 615	35 106	38 033	40 747	43 173	44 982
Inner London - West	C266	50 428	54 671	59 677	62 153	63 121	64 486	68 832	72 562	76 033	78 285
Inner London - East	C267	13 954	14 812	15 763	16 709	17 610	18 899	20 875	22 794	24 402	25 625
Outer London	AIT7	10 928	11 680	12 599	13 199	13 624	13 947	14 378	15 116	15 921	16 376
Outer London - East and North East	C268	8 549	8 930	9 441	9 738	9 938	10 102	10 375	11 000	11 739	12 210
Outer London - South	C269	10 879	11 280	11 867	12 241	12 535	12 874	13 433	14 313	15 211	15 696
Outer London - West and North West	C26A	13 138	14 453	15 952	16 961	17 670	18 116	18 617	19 384	20 183	20 588
South East	IGLK	11 951	12 763	13 769	14 532	15 218	16 088	16 901	17 844	18 804	19 434
Berkshire, Buckinghamshire and Oxfordshire	AIT8	14 457	15 626	17 314	18 584	19 582	20 670	21 688	23 006	24 398	25 213
Berkshire	C26B	15 831	17 464	19 689	21 505	22 743	24 017	25 154	26 669	28 246	29 235
Milton Keynes	C26C	15 628	16 874	18 355	19 321	20 169	21 406	22 775	24 469	26 130	26 934
Buckinghamshire CC	C26D	13 402	14 170	15 411	16 213	16 969	17 642	18 400	19 457	20 716	21 533
Oxfordshire	C26E	13 070	13 908	15 297	16 347	17 265	18 375	19 334	20 495	21 674	22 277
Surrey, East and West Sussex	AIT9	12 045	12 836	13 699	14 387	15 112	16 037	16 833	17 569	18 267	18 770
Brighton and Hove	C26F	10 997	11 239	11 464	11 982	12 803	13 928	14 935	15 842	16 691	17 230
East Sussex CC	C26G	9 094	9 281	9 373	9 516	9 781	10 270	10 732	11 283	11 890	12 314
Surrey	C26H	13 475	14 817	16 353	17 480	18 516	19 662	20 663	21 620	22 522	23 135
West Sussex	C26I	12 314	12 901	13 550	14 007	14 575	15 412	16 090	16 589	17 026	17 405
Hampshire and Isle of Wight	AIU2	11 015	11 727	12 530	13 052	13 572	14 347	15 142	16 100	17 097	17 755
Portsmouth	C26J	11 991	12 858	13 831	14 559	15 300	16 376	17 316	18 162	18 959	19 359
Southampton	C26K	13 336	14 250	14 978	15 341	15 473	16 089	17 135	18 309	19 467	20 014
Hampshire CC	C26L	10 877	11 582	12 413	12 939	13 489	14 268	15 038	16 021	17 070	17 811
Isle of Wight	C26M	6 975	7 192	7 631	8 139	8 742	9 329	9 760	10 280	10 828	11 256
Kent	AIU3	9 533	10 004	10 561	11 041	11 433	12 041	12 649	13 422	14 209	14 752
Medway	C26N	7 509	7 999	8 620	9 145	9 479	9 874	10 237	10 718	11 281	11 764
Kent CC	C26O	9 910	10 377	10 925	11 396	11 800	12 448	13 101	13 926	14 750	15 299

See footnotes on first page of table.

NUTS3.2 ¹Headline Gross Value Added (GVA)² per head by NUTS3 area at current basic prices

continued

£ per head

		1996	1997	1998	1999	2000	2001	2002	2003	2004	2005 ³
NUTS Level 1											
NUTS Level 2											
NUTS Level 3											
South West											
	IGAQ	10 717	11 341	11 999	12 525	12 999	13 709	14 439	15 306	16 175	16 688
Gloucestershire, Wiltshire and North Somerset	AIU4	12 675	13 590	14 565	15 147	15 724	16 633	17 673	18 742	19 736	20 295
Bristol City of	C26P	15 296	16 735	18 145	18 842	19 472	20 481	21 527	22 417	23 182	23 434
North and North East Somerset, South Gloucestershire	C26Q	11 671	12 484	13 365	13 955	14 599	15 607	16 805	18 084	19 277	19 984
Gloucestershire	C26R	11 405	12 152	13 167	13 830	14 509	15 603	16 837	18 084	19 095	19 665
Swindon	C26S	17 843	19 590	21 211	21 970	22 481	23 053	23 886	25 068	26 558	27 354
Wiltshire CC	C26T	11 159	11 614	11 981	12 282	12 655	13 273	13 941	14 619	15 317	15 778
Dorset and Somerset	AIU5	9 511	10 025	10 640	11 280	11 733	12 223	12 674	13 401	14 270	14 868
Bournemouth and Poole	C26U	10 106	11 039	12 095	13 022	13 642	14 285	14 877	15 767	16 737	17 378
Dorset CC	C26V	8 723	8 990	9 383	9 909	10 268	10 725	11 092	11 720	12 504	13 059
Somerset	C26W	9 765	10 216	10 735	11 294	11 725	12 152	12 593	13 320	14 214	14 826
Cornwall and Isles of Scilly	AIU6	7 167	7 448	7 779	8 160	8 618	9 279	9 882	10 580	11 212	11 510
Devon	AIU7	9 736	10 051	10 264	10 612	10 926	11 522	12 010	12 703	13 430	13 841
Plymouth	C26Y	10 367	10 905	11 209	11 590	11 959	12 650	13 093	13 798	14 534	14 937
Torbay	C26Z	9 432	9 666	9 711	9 726	9 648	9 658	9 647	10 042	10 714	11 247
Devon CC	C272	9 560	9 813	10 031	10 432	10 804	11 480	12 077	12 823	13 556	13 944
Wales											
	IGAS	9 517	9 904	10 273	10 596	10 973	11 520	12 074	12 712	13 352	13 784
West Wales and the Valleys	AIU8	8 404	8 645	8 828	8 967	9 233	9 630	10 081	10 625	11 206	11 598
Isle of Anglesey	C273	6 131	6 379	6 593	6 865	7 283	7 825	8 190	8 636	9 028	9 392
Gwynedd	C274	8 999	8 989	8 904	8 955	9 203	9 926	10 786	11 671	12 323	12 735
Conwy and Denbighshire	C275	8 147	8 331	8 474	8 621	8 950	9 409	10 018	10 696	11 386	11 874
South West Wales	C276	8 098	8 152	8 164	8 305	8 565	8 863	9 209	9 766	10 402	10 859
Central Valleys	C277	8 032	8 334	8 603	8 705	9 022	9 531	10 120	10 604	11 037	11 262
Gwent Valleys	C278	7 761	8 031	8 360	8 548	8 718	8 872	9 020	9 379	9 924	10 298
Bridgend and Neath Port Talbot	C279	9 838	10 234	10 212	10 025	9 994	10 249	10 676	11 198	11 742	12 160
Swansea	C27A	9 221	9 634	10 173	10 683	11 298	11 985	12 580	13 204	13 893	14 302
East Wales	AIU9	11 514	12 153	12 834	13 475	14 035	14 840	15 569	16 375	17 114	17 605
Monmouthshire and Newport	C27B	10 450	11 213	12 272	13 249	13 880	14 539	15 091	16 038	17 030	17 808
Cardiff and Vale of Glamorgan	C27C	11 978	12 669	13 514	14 431	15 322	16 676	17 838	19 029	19 983	20 577
Flintshire and Wrexham	C27D	12 628	13 271	13 552	13 713	13 853	14 115	14 369	14 587	14 971	15 227
Powys	C27E	9 400	9 634	9 954	10 098	10 308	10 721	11 360	11 949	12 284	12 418
Scotland											
	IGAT	11 377	11 925	12 444	12 837	13 270	13 821	14 578	15 436	16 253	16 943
North Eastern Scotland	AIV2	15 834	16 602	17 419	17 896	18 694	19 422	20 079	20 814	21 634	22 315
Aberdeen City, Aberdeenshire and North East Moray	C27F	15 834	16 602	17 419	17 896	18 694	19 422	20 079	20 814	21 634	22 315
Eastern Scotland	AIV3	11 852	12 361	12 821	13 122	13 444	13 973	14 895	15 843	16 683	17 416
Angus and Dundee City	C27G	10 839	11 181	11 542	11 721	11 881	12 227	12 989	13 973	14 806	15 506
Clackmannanshire and Fife	C27H	8 813	9 151	9 455	9 684	9 936	10 277	10 796	11 363	11 909	12 401
East Lothian and Midlothian	C27I	7 855	8 078	8 344	8 535	8 713	9 067	9 675	10 419	11 050	11 704
Scottish Borders	C27J	9 343	9 353	9 401	9 493	9 575	9 767	10 262	10 842	11 260	11 763
Edinburgh, City of	C27K	17 252	18 237	19 307	20 097	21 061	22 440	24 464	26 127	27 412	28 432
Falkirk	C27L	11 533	11 982	11 938	11 837	11 941	12 304	13 048	13 697	14 330	14 768
Perth & Kinross and Stirling	C27M	10 830	11 151	11 454	11 526	11 630	11 964	12 707	13 561	14 341	15 073
West Lothian	C27N	13 606	14 408	14 850	15 067	14 798	14 531	14 725	15 452	16 401	17 348
South Western Scotland	AIV4	10 498	11 076	11 602	12 051	12 493	13 034	13 682	14 484	15 280	15 958
East and West Dunbartonshire and Helensburgh & Lomond	C27O	7 382	7 697	8 049	8 346	8 673	9 025	9 508	9 969	10 488	10 819
Dumfries and Galloway	C27P	9 258	9 309	9 490	9 917	10 443	10 897	11 341	11 763	12 035	12 355
East Ayrshire and North Ayrshire Mainland	C27Q	9 052	9 377	9 503	9 615	9 652	9 846	10 113	10 625	11 131	11 634
Glasgow City	C27R	14 080	15 266	16 332	17 293	18 224	19 301	20 531	21 989	23 308	24 375
Inverclyde, East Renfrewshire and Renfrewshire	C27S	11 419	11 894	12 055	12 004	11 924	11 937	12 165	12 660	13 400	14 017
North Lanarkshire	C27T	8 186	8 510	8 856	9 163	9 660	10 399	11 217	12 096	12 852	13 469
South Ayrshire	C27U	10 346	10 810	11 335	11 824	12 313	12 694	13 207	13 751	14 425	14 974
South Lanarkshire	C27V	9 080	9 670	10 437	11 056	11 540	11 932	12 353	12 943	13 577	14 215
Highlands and Islands	AIV5	8 352	8 614	8 973	9 355	9 789	10 286	10 998	11 905	12 736	13 276
Caithness & Sutherland and Ross & Cromarty	C27W	6 992	7 155	7 445	7 831	8 277	8 874	9 526	10 332	10 975	11 374
Inverness & Nairn and West Moray, Badenoch & Strathspey	C27X	8 842	9 183	9 645	10 111	10 751	11 521	12 741	14 004	15 070	15 570
Lochaber, Skye & Lochalsh and Argyll and the Islands	C27Y	8 285	8 449	8 754	9 141	9 511	9 793	10 085	10 535	11 058	11 497
Eilean Siar (Western Isles)	C27Z	7 201	7 739	8 259	8 657	8 897	9 250	9 944	11 131	12 274	13 060
Orkney Islands	C282	10 624	10 726	10 830	10 809	10 821	10 880	11 327	12 341	13 304	14 176
Shetland Islands	C283	11 123	11 588	11 997	12 251	12 485	12 681	13 277	14 475	15 777	16 899
Northern Ireland											
	IGAUI	9 325	9 820	10 446	10 945	11 415	11 928	12 474	13 195	13 993	14 508
Belfast	C284	14 652	16 104	17 537	18 892	19 797	21 002	22 191	23 783	25 568	26 792
Outer Belfast	C285	7 267	7 701	8 245	8 760	9 254	9 778	10 201	10 668	11 193	11 558
East of Northern Ireland	C286	9 408	9 718	10 187	10 561	10 997	11 395	11 819	12 419	13 102	13 505
North of Northern Ireland	C287	7 980	8 309	8 767	9 065	9 341	9 650	9 981	10 480	10 989	11 365
West and South of Northern Ireland	C288	8 041	8 202	8 605	8 785	9 151	9 540	10 151	10 892	11 718	12 212
United Kingdom less Extra-Regio⁴											
	IGAV	11 505	12 185	12 929	13 491	14 006	14 690	15 462	16 346	17 234	17 827

See footnotes on first page of table.

NUTS3.3 ¹Headline Gross Value Added (GVA)² per head indices by NUTS3 area at current basic prices by region

UK /less Extra-Region=100

		1996	1997	1998	1999	2000	2001	2002	2003	2004	2005 ³
NUTS Level 1											
NUTS Level 2											
NUTS Level 3											
UNITED KINGDOM	IGAW	100	100	100	100	100	100	100	100	100	100
England	IGBG	102	102	102	102	102	103	103	103	103	102
North East	IGAX	83	81	80	79	79	79	79	79	80	81
Tees Valley and Durham	AIV6	82	80	78	76	75	74	72	72	73	73
Hartlepool and Stockton-on-Tees	C289	96	93	89	87	84	81	78	77	78	80
South Teesside	C28A	78	78	76	74	71	69	68	70	72	74
Darlington	C28B	99	98	94	95	96	98	98	97	97	96
Durham CC	C28C	73	71	69	68	68	68	66	65	65	65
Northumberland and Tyne and Wear	AIV7	83	83	82	82	83	84	85	85	86	87
Northumberland	C28D	74	71	69	66	66	66	67	68	68	68
Tyneside	C28E	87	88	88	89	90	91	92	93	94	95
Sunderland	C28F	81	81	81	80	81	83	83	84	85	86
North West	IGAY	90	90	89	89	89	89	88	88	88	87
Cumbria	AIV8	91	88	84	80	78	76	76	76	76	76
West Cumbria	C28G	87	85	81	78	74	71	69	68	66	65
East Cumbria	C28H	95	90	86	83	81	81	81	83	85	85
Cheshire	AIV9	114	114	113	113	112	112	111	109	109	109
Halton and Warrington	C28I	111	112	113	112	112	113	114	114	114	115
Cheshire CC	C28J	115	114	113	113	112	111	109	107	106	106
Greater Manchester	AIW2	93	93	93	94	94	94	93	93	93	93
Greater Manchester South	C28K	105	107	110	113	114	115	115	115	115	115
Greater Manchester North	C28L	79	77	74	72	71	69	68	68	68	68
Lancashire	AIW3	88	86	84	84	84	84	84	83	82	82
Blackburn with Darwen	C28M	93	89	85	84	82	81	79	79	78	78
Blackpool	C28N	76	75	73	73	72	71	70	69	68	67
Lancashire CC	C28O	89	87	86	86	86	87	86	85	84	84
Merseyside	AIW4	71	71	71	71	72	72	73	73	72	72
East Merseyside	C28P	64	63	63	63	65	67	68	68	67	67
Liverpool	C28Q	86	88	89	90	89	90	90	91	92	92
Sefton	C28R	66	65	64	64	64	65	66	65	64	63
Wirral	C28S	60	60	61	60	60	60	59	58	57	57
Yorkshire and the Humber	IGAZ	90	90	89	88	88	88	88	87	87	86
East Riding and North Lincolnshire	AIW5	94	92	88	85	84	84	84	83	83	82
Kingston upon Hull, City of	C28T	92	91	88	88	90	91	92	91	90	89
East Riding of Yorkshire	C28U	83	79	75	71	71	71	72	72	71	70
North and North East Lincolnshire	C28V	106	105	101	96	92	90	89	89	89	88
North Yorkshire	AIW6	95	94	92	91	92	92	93	92	92	90
York	C28W	115	117	117	117	117	116	116	114	112	109
North Yorkshire CC	C28X	88	86	84	83	84	84	85	86	85	84
South Yorkshire	AIW7	76	76	76	75	75	76	76	77	77	77
Barnsley, Doncaster and Rotherham	C28Y	67	67	67	66	67	67	67	68	69	69
Sheffield	C28Z	88	88	89	88	88	89	89	90	90	89
West Yorkshire	AIW8	95	96	96	96	96	96	95	94	93	92
Bradford	C292	86	87	87	87	86	85	83	80	78	76
Leeds	C293	114	115	116	117	118	118	118	118	117	116
Calderdale, Kirklees and Wakefield	C294	86	86	85	85	84	83	82	82	82	82
East Midlands	IGBA	95	94	93	92	91	92	92	92	92	91
Derbyshire and Nottinghamshire	AIW9	92	92	90	90	90	90	90	90	90	90
Derby	C295	109	118	125	130	131	130	126	124	122	122
East Derbyshire	C296	67	67	68	68	70	72	74	74	74	75
South and West Derbyshire	C297	96	94	88	85	82	81	80	81	81	81
Nottingham	C298	142	137	133	131	132	135	136	137	138	138
North Nottinghamshire	C299	81	80	78	76	76	76	76	76	76	77
South Nottinghamshire	C29A	67	67	67	68	70	71	71	71	72	72
Leicestershire, Rutland and Northamptonshire	AIX2	102	102	103	101	100	100	100	100	100	100
Leicester	C29B	112	113	112	113	113	113	113	113	113	113
Leicestershire CC and Rutland	C29C	99	98	96	91	88	88	88	90	90	91
Northamptonshire	C29D	100	102	105	107	107	106	105	105	104	104
Lincolnshire	AIX3	86	83	79	76	75	77	77	77	76	74

1 The headline GVA series for this publication have been calculated using a five-period moving average.

2 Estimates of workplace based GVA allocate income to the region in which commuters work.

3 Provisional.

NUTS3.3 ¹Headline Gross Value Added (GVA)² per head indices by NUTS3 area at current basic prices by region

continued

UK /less Extra-Regio=100

		1996	1997	1998	1999	2000	2001	2002	2003	2004	2005 ³
NUTS Level 1											
NUTS Level 2											
NUTS Level 3											
West Midlands	IGBB	93	93	93	92	92	91	91	90	89	89
Herefordshire, Worcestershire and Warwickshire	AIX4	92	91	91	92	93	92	91	90	90	90
Herefordshire County of	C29F	89	85	80	80	78	78	77	77	78	78
Worcestershire	C29G	85	83	83	85	86	85	84	84	85	85
Warwickshire	C29H	100	103	104	105	106	105	102	101	100	100
Shropshire and Staffordshire	AIX5	84	84	83	81	80	79	79	79	78	78
Telford and Wrekin	C29I	111	109	106	103	99	96	94	94	93	92
Shropshire CC	C29J	78	77	76	75	74	74	76	77	78	77
Stoke-on-Trent	C29K	95	93	90	85	83	81	80	80	79	79
Staffordshire CC	C29L	78	78	78	77	77	76	76	76	76	75
West Midlands	AIX6	99	100	99	98	98	98	97	96	95	95
Birmingham	C29M	102	104	105	106	107	108	106	104	102	101
Solihull	C29N	93	94	99	102	108	114	118	119	119	119
Coventry	C29O	109	114	114	113	111	108	105	103	102	102
Dudley and Sandwell	C29P	93	92	88	86	84	83	82	81	80	80
Walsall and Wolverhampton	C29Q	94	93	90	88	87	86	84	84	84	84
East of England	IGLL	96	96	95	95	95	95	95	95	96	95
East Anglia	AIX7	96	93	91	90	90	91	91	91	91	91
Peterborough	C29R	110	112	113	112	111	110	111	114	115	116
Cambridgeshire CC	C29S	105	104	103	104	105	107	108	109	108	107
Norfolk	C29T	87	85	83	81	79	79	78	79	79	79
Suffolk	C29U	95	91	87	85	85	87	87	86	86	85
Bedfordshire and Hertfordshire	AIX8	109	110	113	114	115	114	113	112	113	112
Luton	C29V	104	104	104	103	102	102	100	100	101	100
Bedfordshire CC	C29W	99	96	93	91	89	88	86	86	87	87
Hertfordshire	C29X	113	117	122	124	126	127	125	125	125	124
Essex	AIX9	84	84	84	83	82	82	83	84	84	84
Southend-on-Sea	C29Y	77	77	79	79	80	80	80	80	80	79
Thurrock	C29Z	101	102	99	96	90	85	83	83	84	84
Essex CC	C2A2	84	83	83	82	82	82	83	85	85	85
London	IGLM	147	149	152	153	153	151	153	154	155	155
Inner London	AIY2	232	236	239	241	240	239	246	249	251	252
Inner London - West	C2A3	438	449	462	461	451	439	445	444	441	439
Inner London - East	C2A4	121	122	122	124	126	129	135	139	142	144
Outer London	AIY3	95	96	97	98	97	95	93	92	92	92
Outer London - East and North East	C2A5	74	73	73	72	71	69	67	67	68	68
Outer London - South	C2A6	95	93	92	91	89	88	87	88	88	88
Outer London - West and North West	C2A7	114	119	123	126	126	123	120	119	117	115
South East	IGLN	104	105	106	108	109	110	109	109	109	109
Berkshire, Buckinghamshire and Oxfordshire	AIY4	126	128	134	138	140	141	140	141	142	141
Berkshire	C2A8	138	143	152	159	162	163	163	163	164	164
Milton Keynes	C2A9	136	138	142	143	144	146	147	150	152	151
Buckinghamshire CC	C2AA	116	116	119	120	121	120	119	119	120	121
Oxfordshire	C2AB	114	114	118	121	123	125	125	125	126	125
Surrey, East and West Sussex	AIY5	105	105	106	107	108	109	109	107	106	105
Brighton and Hove	C2AC	96	92	89	89	91	95	97	97	97	97
East Sussex CC	C2AD	79	76	72	71	70	70	69	69	69	69
Surrey	C2AE	117	122	126	130	132	134	134	132	131	130
West Sussex	C2AF	107	106	105	104	104	105	104	101	99	98
Hampshire and Isle of Wight	AIY6	96	96	97	97	97	98	98	98	99	100
Portsmouth	C2AG	104	106	107	108	109	111	112	111	110	109
Southampton	C2AH	116	117	116	114	110	110	111	112	113	112
Hampshire CC	C2AI	95	95	96	96	96	97	97	98	99	100
Isle of Wight	C2AJ	61	59	59	60	62	64	63	63	63	63
Kent	AIY7	83	82	82	82	82	82	82	82	82	83
Medway	C2AK	65	66	67	68	68	67	66	66	65	66
Kent CC	C2AL	86	85	85	84	84	85	85	85	86	86

See footnotes on first page of table.

NUTS3.3 ¹Headline Gross Value Added (GVA)² per head indices by NUTS3 area at current basic prices by region

continued

UK less Extra-Region=100

		1996	1997	1998	1999	2000	2001	2002	2003	2004	2005 ³
NUTS Level 1											
NUTS Level 2											
NUTS Level 3											
South West	IGBF	93	93	93	93	93	93	93	94	94	94
Gloucestershire, Wiltshire and North Somerset	AIY8	110	112	113	112	112	113	114	115	115	114
Bristol City of	C2AM	133	137	140	140	139	139	139	137	135	131
North and North East Somerset, South Gloucestershire	C2AN	101	102	103	103	104	106	109	111	112	112
Gloucestershire	C2AO	99	100	102	103	104	106	109	111	111	110
Swindon	C2AP	155	161	164	163	161	157	154	153	154	153
Wiltshire CC	C2AQ	97	95	93	91	90	90	90	89	89	89
Dorset and Somerset	AIY9	83	82	82	84	84	83	82	82	83	83
Bournemouth and Poole	C2AR	88	91	94	97	97	97	96	96	97	97
Dorset CC	C2AS	76	74	73	73	73	73	72	72	73	73
Somerset	C2AT	85	84	83	84	84	83	81	81	82	83
Cornwall and Isles of Scilly	AIZ2	62	61	60	60	62	63	64	65	65	65
Devon	AIZ3	85	82	79	79	78	78	78	78	78	78
Plymouth	C2AV	90	89	87	86	85	86	85	84	84	84
Torbay	C2AW	82	79	75	72	69	66	62	61	62	63
Devon CC	C2AX	83	81	78	77	77	78	78	78	79	78
Wales	IGBH	83	81	79	79	78	78	78	78	77	77
West Wales and the Valleys	AIZ4	73	71	68	66	66	66	65	65	65	65
Isle of Anglesey	C2AY	53	52	51	51	52	53	53	53	52	53
Gwynedd	C2AZ	78	74	69	66	66	68	70	71	72	71
Conwy and Denbighshire	C2B2	71	68	66	64	64	64	65	65	66	67
South West Wales	C2B3	70	67	63	62	61	60	60	60	60	61
Central Valleys	C2B4	70	68	67	65	64	65	65	65	64	63
Gwent Valleys	C2B5	67	66	65	63	62	60	58	57	58	58
Bridgend and Neath Port Talbot	C2B6	86	84	79	74	71	70	69	69	68	68
Swansea	C2B7	80	79	79	79	81	82	81	81	81	80
East Wales	AIZ5	100	100	99	100	100	101	101	100	99	99
Monmouthshire and Newport	C2B8	91	92	95	98	99	99	98	98	99	100
Cardiff and Vale of Glamorgan	C2B9	104	104	105	107	109	114	115	116	116	115
Flintshire and Wrexham	C2BA	110	109	105	102	99	96	93	89	87	85
Powys	C2BB	82	79	77	75	74	73	73	73	71	70
Scotland	IGBI	99	98	96	95	95	94	94	94	94	95
North Eastern Scotland	AIZ6	138	136	135	133	133	132	130	127	126	125
Aberdeen City, Aberdeenshire and North East Moray	C2BC	138	136	135	133	133	132	130	127	126	125
Eastern Scotland	AIZ7	103	101	99	97	96	95	96	97	97	98
Angus and Dundee City	C2BD	94	92	89	87	85	83	84	85	86	87
Clackmannanshire and Fife	C2BE	77	75	73	72	71	70	70	70	69	70
East Lothian and Midlothian	C2BF	68	66	65	63	62	62	63	64	64	66
Scottish Borders	C2BG	81	77	73	70	68	66	66	66	65	66
Edinburgh, City of	C2BH	150	150	149	149	150	153	158	160	159	159
Falkirk	C2BI	100	98	92	88	85	84	84	84	83	83
Perth & Kinross and Stirling	C2BJ	94	92	89	85	83	81	82	83	83	85
West Lothian	C2BK	118	118	115	112	106	99	95	95	95	97
South Western Scotland	AIZ8	91	91	90	89	89	89	88	89	89	90
East and West Dunbartonshire and Helensburgh & Lomond	C2BL	64	63	62	62	62	61	61	61	61	61
Dumfries and Galloway	C2BM	80	76	73	74	75	74	73	72	70	69
East Ayrshire and North Ayrshire Mainland	C2BN	79	77	74	71	69	67	65	65	65	65
Glasgow City	C2BO	122	125	126	128	130	131	133	135	135	137
Inverclyde, East Renfrewshire and Renfrewshire	C2BP	99	98	93	89	85	81	79	77	78	79
North Lanarkshire	C2BQ	71	70	68	68	69	71	73	74	75	76
South Ayrshire	C2BR	90	89	88	88	88	86	85	84	84	84
South Lanarkshire	C2BS	79	79	81	82	82	81	80	79	79	80
Highlands and Islands	AIZ9	73	71	69	69	70	70	71	73	74	74
Caithness & Sutherland and Ross & Cromarty	C2BT	61	59	58	58	59	60	62	63	64	64
Inverness & Nairn and West Moray, Badenoch & Strathspey	C2BU	77	75	75	75	77	78	82	86	87	87
Lochaber, Skye & Lochalsh and Argyll and the Islands	C2BV	72	69	68	68	68	67	65	64	64	64
Eilean Siar (Western Isles)	C2BW	63	64	64	64	64	63	64	68	71	73
Orkney Islands	C2BX	92	88	84	80	77	74	73	75	77	80
Shetland Islands	C2BY	97	95	93	91	89	86	86	89	92	95
Northern Ireland	IGBJ	81	81	81	81	81	81	81	81	81	81
Belfast	C2BZ	127	132	136	140	141	143	144	146	148	150
Outer Belfast	C2C2	63	63	64	65	66	67	66	65	65	65
East of Northern Ireland	C2C3	82	80	79	78	79	78	76	76	76	76
North of Northern Ireland	C2C4	69	68	68	67	67	66	65	64	64	64
West and South of Northern Ireland	C2C5	70	67	67	65	65	65	66	67	68	69

See footnotes on first page of tables.