

# *South County Redistricting*



ANNE ARUNDEL  
COUNTY PUBLIC SCHOOLS

# *South County Redistricting Committee*

## **TABLE OF CONTENTS**

The Charge of the Committee .....	Appendix A
Rules of Engagement .....	Appendix B
Redistricting Timeline .....	Appendix C
Redistricting and Attendance Areas Policy 900A .....	Appendix D
Pin Map.....	Appendix E
Maryland School Assessment 2007-08 Reading & Math Results.....	Appendix F
School Data: Current & After Redistricting .....	Appendix G
School Data from 2008 Educational Facilities Master Plan.....	Appendix H
Ethnic Distribution.....	Appendix I
FY2010 Proposed Capital Budget .....	Appendix J
School Floor Plans .....	Appendix K

## CHARGE

The Superintendent of Schools is forming a Redistricting Committee to advise him on:

1. Adjustments to elementary boundaries in the southern area of Anne Arundel County, to allow for balanced utilization of schools. An emphasis should be placed on utilizing the available capacity at Tracey's Elementary School.

## RESOURCES TO ACCOMPLISH THE TASK

The Superintendent hopes that representatives of each school and any other interested parties will participate in the problem solving process and the formulation of recommendations for the Superintendent to consider. The Superintendent recognizes that each school should have two voting representatives if voting should become necessary.

## TIMELINE

In accordance with Board of Education Policy 900A, the Superintendent will make his recommendation no later than the first Board meeting in December. This year's deadline is December 3, 2008. Therefore, it is necessary that the committee attempt to complete its work no later than October 31, 2008. This is to allow time for the Superintendent to take the committee's recommendation under consideration and for staff to prepare the formal presentation to the Board of Education.

## OTHER INFORMATION AS RELEVANT

Staff of the Planning Office will be available to assist the committee in its work. Additional information and requests made to the Planning Office should be routed through the redistricting committee.

**AACPS Redistricting**

**ROE  
(Rules of Engagement)**

1. Robert's Rules of Order will be followed to the best of our ability.
2. Each affected school will be represented by a team of two. Only these two will have voting rights if voting becomes necessary.
3. A school's representative team is the vehicle of choice for expressing the views of that school's population. However, all attending the realignment meeting will have an opportunity to express their views (see #4).
4. In the interest of maintaining schedule the chairman has the right to call a vote to terminate discussions in any one area. Due to the magnitude of this effort, maintaining schedule is a prime concern.
5. Do not lose sight of the fact that the best interest of all affected students is our first priority.
6. Issues will always be discussed in a calm and professional manner. Remember, anyone in attendance could have the suggestion that could vastly simplify this complex problem.
7. Each representative should be prepared to work in subgroups between meetings to develop options for consideration.
8. Ensure that all outside tasks are completed on time.
9. Learn from each other and work together to build a better learning environment and learning experience for the children of our community.



## Redistricting Timeline

Maryland Education Article 4-109 gives the Board of Education the right of establishing school boundaries. Redistricting in Anne Arundel County Public Schools is governed by Board of Education Policy 900A (Attached). The process for redistricting is as follows:

- 1) *September 30<sup>th</sup>* enrollment data is gathered from all schools
- 2) Redistricting proposals may come from:
  - a. Public (Either as an individual or community, through the Office of Planning, Superintendent's Office or Board of Education.)
  - b. School Administration
  - c. Staff
  - d. Superintendent
  - e. Board of Education
- 3) The Superintendent may form a committee of parents from all schools that could be involved in the redistricting area or may direct staff to develop scenarios.
  - a. If a parent committee is formed, principals will be asked to nominate two (2) voting members.
    - i. The committee will meet, with staff assistance, to formulate a proposed boundary.
  - b. If a committee is not formed, staff will work on the development of scenarios on behalf of the Superintendent.
- 4) No later than the *first Board meeting in December*, the Superintendent must make a recommendation to the Board of Education as to the proposed redistricting.
- 5) The Board of Education will then take the Superintendent's recommendation into consideration and on or about the *first Board meeting scheduled in January, but not later than the end of January*, will vote, in public session, on what redistricting recommendation(s) to take to public briefing and hearing. At this time, the Board may:
  - a. Accept the Superintendent's recommendation
  - b. Modify the Superintendent's recommendation
  - c. Propose its own recommendation.
- 6) Upon the Board's vote in *January*, staff will conduct a briefing(s) explaining what recommendation(s) have been proposed. This is a time for the public to ask questions and receive clarification. No testimony is taken at a briefing.
- 7) After the briefing, at a time set by the Board (*usually in February*) and announced publicly, the Board will hold a hearing(s) and will accept verbal or written testimony on the proposed redistricting recommendation(s).
- 8) The Board then considers the testimony given and at the next Board meeting may amend or leave as is the recommended redistricting.
  - a. If the Board amends the redistricting proposed, steps 5, 6, and 7 are repeated. The Board will then, *no later than April 30<sup>th</sup>*, vote on the recommended redistricting.

Title: **Redistricting and Attendance Areas**

Policy Code: **900A**

Cross Reference:

Adopted: (10-12-94)

Revised: (5-16-01)

Page: 1

- 
- I. The Board, with advice of the Superintendent, will establish schools, and determine the attendance boundaries of all schools.
  - II. If the Superintendent recommends redistricting, then the Superintendent will present the recommendation to the Board following receipt of the September 30 enrollment figures but no later than the first Board Meeting in December of the school year in which action is to be considered. At the meeting when the Superintendent presents a recommendation, or at any meeting thereafter but before the end of January, a Board member may propose that a school or schools be redistricted.
  - III. The Board will review the Superintendent's recommendation and any Board member proposals and determine, no later than the end of January in each school year that such action is to be considered, which school(s) will go forward to public hearing for school redistricting.
  - IV. The Board of Education will publicly announce its intention to consider redistricting and will conduct a public hearing(s).
  - V. At a meeting of the Board subsequent to the public hearing but not later than April 30 of any school year, the Board will make and announce its decision in public session. The Board reserves the right to utilize all information received during the redistricting process to formulate a final decision on redistricting, which may differ from the recommendations or proposals that the Board initially moved to public hearing. If a revision of the recommendations or proposals occur, then the Board shall hold an additional public hearing on the revision prior to a final decision.
  - VI. Emergencies
    - A. An emergency circumstance is one where the decision to redistrict a school because of unforeseen circumstances cannot be announced at least 90 days before the date a school is scheduled to redistrict or before April 30 of any school year. Emergencies include natural and man-made disasters (e.g., fire, flood, safety hazards, etc.).

---

State Law: Educ. Art. §§4-101, 4-108, 4-109

Adm. Reg.:

State Reg.: COMAR 13A.02.09

Neg. Agr.:

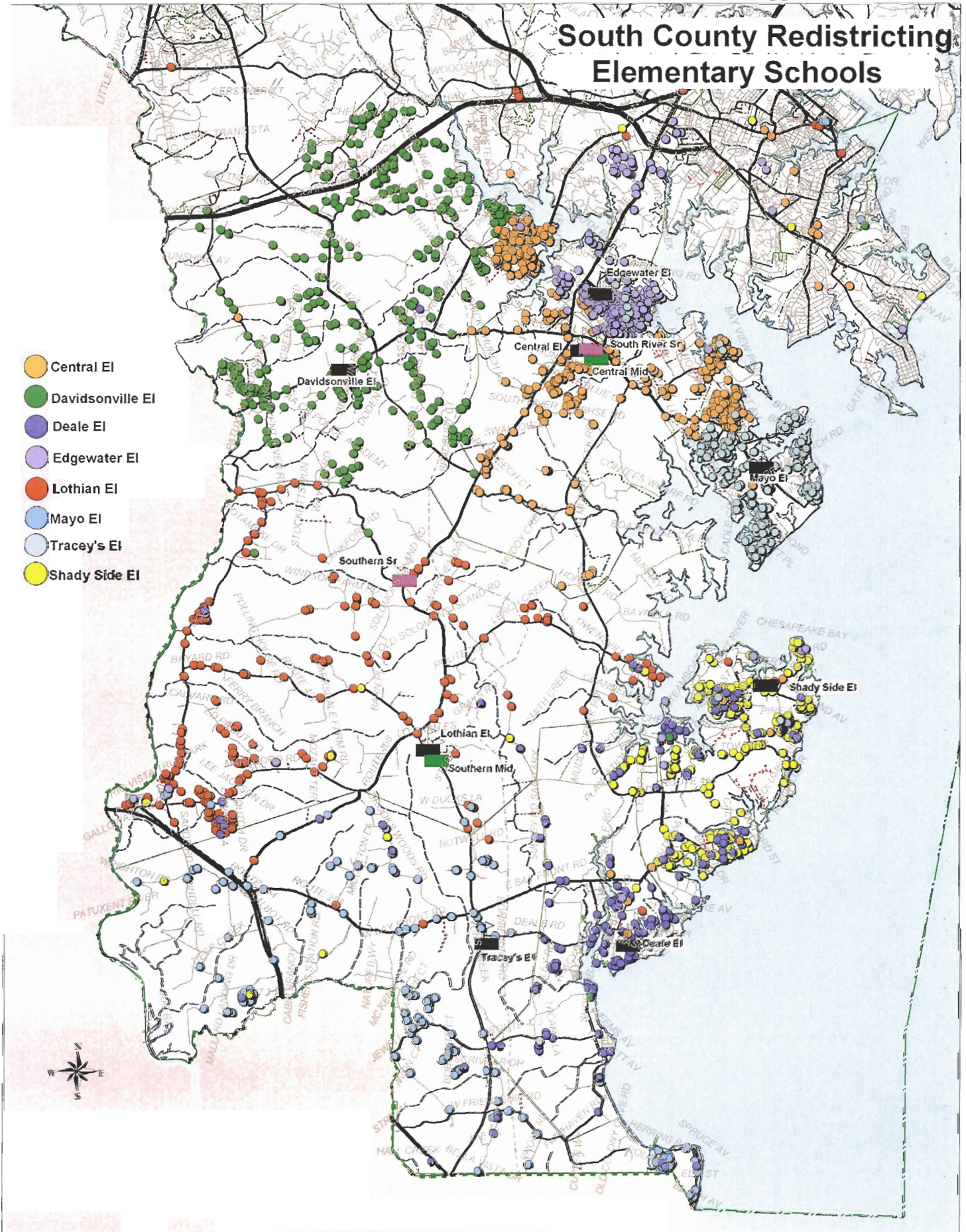
Federal Law:

Other Citation:

- B. In an emergency the Superintendent will take immediate and temporary action until the Board meets to address the situation and adopts a plan of action to handle the emergency.



# South County Redistricting Elementary Schools



Anne Arundel County Public Schools  
Maryland School Assessment 2007-08  
Reading Results For Elementary Schools

Appendix F

School	Grade	Adv Pct	Prof Pct	Basic Pct	Prof/Adv Pct
Anne Arundel County	3	21.5	66.6	11.9	88.1
Anne Arundel County	4	35.6	57.1	7.4	92.7
Anne Arundel County	5	59.2	32.5	8.3	91.7
Central	3	29.5	66.7	3.8	96.2
Central	4	48.1	48.1	3.8	96.2
Central	5	78.6	19.8	1.6	98.4
Davidsonville	3	30.4	62.4	7.2	92.8
Davidsonville	4	54.7	43.4	1.9	98.1
Davidsonville	5	75.0	24.1	0.9	99.1
Deale	3	30.0	60.0	10.0	90.0
Deale	4	46.3	48.8	4.9	95.1
Deale	5	49.0	43.1	7.8	92.1
Edgewater	3	15.6	76.6	7.8	92.2
Edgewater	4	40.0	55.0	5.0	95.0
Edgewater	5	59.2	32.4	8.5	91.6
Lothian	3	22.9	62.9	14.3	85.8
Lothian	4	25.9	66.7	7.4	92.6
Lothian	5	52.6	34.2	13.2	86.8
Mayo	3	22.4	70.7	6.9	93.1
Mayo	4	47.3	50.9	1.8	98.2
Mayo	5	75.0	25.0		100.0
Shady Side	3	19.4	74.6	6.0	94.0
Shady Side	4	37.0	54.3	8.6	91.3
Shady Side	5	61.3	32.3	6.5	93.6
Tracey's	3	22.0	74.0	4.0	96.0
Tracey's	4	32.6	55.8	11.6	88.4
Tracey's	5	55.1	32.7	12.2	87.8



Anne Arundel County Public Schools  
 Maryland School Assessment 2007-08  
 Reading Results For Middle Schools

School	Grade	Adv Pct	Prof Pct	Basic Pct	Prof/Adv Pct
Anne Arundel County	6	45.0	38.2	16.8	83.2
Anne Arundel County	7	46.8	36.8	16.4	83.6
Anne Arundel County	8	37.5	38.5	24.0	76.0
Central	6	50.6	40.8	8.6	91.4
Central	7	59.6	30.7	9.6	90.3
Central	8	46.4	38.6	15.0	85.0
Southern	6	43.8	37.9	18.3	81.7
Southern	7	43.5	40.3	16.2	83.8
Southern	8	36.8	37.1	26.1	73.9

Anne Arundel County Public Schools  
Maryland School Assessment 2007-08  
Mathematics Results For Elementary Schools

School	Grade	Adv Pct	Prof Pct	Basic Pct	Prof/Adv Pct
Anne Arundel County	3	34.2	54.6	11.2	88.8
Anne Arundel County	4	52.7	40.5	6.8	93.2
Anne Arundel County	5	31.4	55.4	13.3	86.8
Central	3	43.8	51.4	4.8	95.2
Central	4	66.3	29.8	3.8	96.1
Central	5	57.1	39.7	3.2	96.8
Davidsonville	3	45.6	49.6	4.8	95.2
Davidsonville	4	68.9	29.2	1.9	98.1
Davidsonville	5	38.0	57.4	4.6	95.4
Deale	3	36.0	50.0	14.0	86.0
Deale	4	56.1	34.1	9.8	90.2
Deale	5	17.6	66.7	15.7	84.3
Edgewater	3	38.5	55.1	6.4	93.6
Edgewater	4	50.0	38.3	11.7	88.3
Edgewater	5	32.4	57.7	9.9	90.1
Lothian	3	24.3	61.4	14.3	85.7
Lothian	4	54.3	37.0	8.6	91.3
Lothian	5	22.4	55.3	22.4	77.7
Mayo	3	31.0	63.8	5.2	94.8
Mayo	4	67.3	30.9	1.8	98.2
Mayo	5	36.5	61.5	1.9	98.0
Shady Side	3	23.9	73.1	3.0	97.0
Shady Side	4	50.6	43.2	6.2	93.8
Shady Side	5	25.8	64.5	9.7	90.3
Tracey's	3	28.0	64.0	8.0	92.0
Tracey's	4	30.2	58.1	11.6	88.3
Tracey's	5	24.5	57.1	18.4	81.6

Anne Arundel County Public Schools  
 Maryland School Assessment 2007-08  
 Mathematics Results For Middle Schools

School	Grade	Adv Pct	Prof Pct	Basic Pct	Prof/Adv Pct
Anne Arundel County	6	40.8	41.2	18.0	82.0
Anne Arundel County	7	29.7	49.2	21.1	78.9
Anne Arundel County	8	38.8	33.8	27.3	72.6
Central	6	51.5	41.4	7.1	92.9
Central	7	48.1	43.9	8.0	92.0
Central	8	56.4	28.7	15.0	85.1
Southern	6	34.2	47.9	17.9	82.1
Southern	7	25.3	52.6	22.1	77.9
Southern	8	33.7	38.5	27.8	72.2

## South County Elementary Data

## Appendix G

### Current Data

School	State Rated Capacity	Actual		Projected			2013% Utilization	
		2008	2009	2010	2011	2012		2013
Central EI	635	678	694	714	736	758	760	120%
Davidsonville EI	595	617	596	562	572	543	544	91%
Deale EI	330	291	272	260	260	233	233	71%
Edgewater EI	411	447	435	422	418	394	394	96%
Lothian EI	499	506	534	554	548	569	570	114%
Mayo EI	352	329	310	303	294	290	291	83%
Shady Side EI	502	456	412	414	409	406	406	81%
Tracey's EI	397	262	254	248	251	264	265	67%

### After Redistricting

School	State Rated Capacity	Actual		Projected			2013% Utilization	
		2008	2009	2010	2011	2012		2013
Central EI	635	678	?	?	?	?	?	?
Davidsonville EI	595	617	?	?	?	?	?	?
Deale EI	330	291	?	?	?	?	?	?
Edgewater EI	411	447	?	?	?	?	?	?
Lothian EI	499	506	?	?	?	?	?	?
Mayo EI	352	329	?	?	?	?	?	?
Shady Side EI	502	456	?	?	?	?	?	?
Tracey's EI	397	262	?	?	?	?	?	?

**South County  
Secondary Schools**

**Middle Schools**

**Current Data**

School	State Rated Capacity	Actual 2008	Actual			Projected			2013% Utilization
			2009	2010	2011	2012	2013		
Central Mid	1187	1098	1050	1038	1039	1037	1073	90%	
Southern Mid	1091	749	734	726	726	726	753	69%	

**After Redistricting**

School	State Rated Capacity	Actual 2008	Actual			Projected			2013% Utilization
			2009	2010	2011	2012	2013		
Central Mid	1187	1098	?	?	?	?	?	?	
Southern Mid	1091	749	?	?	?	?	?	?	

**Senior High Schools**

**Current Data**

School	State Rated Capacity	Actual 2008	Actual			Projected			2013% Utilization
			2009	2010	2011	2012	2013		
South River Sr	2133	1932	1897	1856	1837	1827	1801	84%	
Southern Sr	1355	1162	1143	1118	1107	1101	1086	80%	

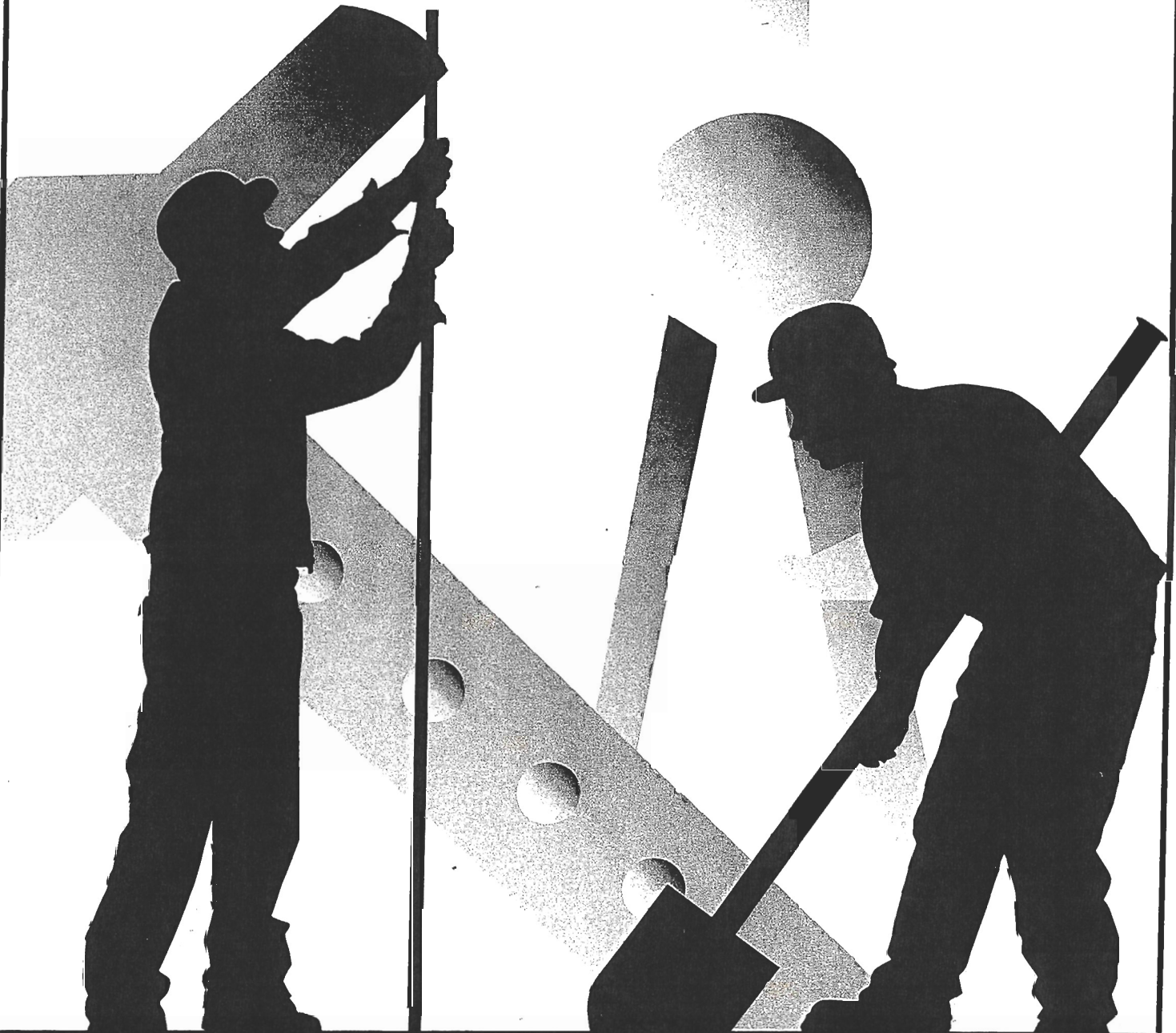
**After Redistricting**

School	State Rated Capacity	Actual 2008	Actual			Projected			2013% Utilization
			2009	2010	2011	2012	2013		
South River Sr	2133	1955	?	?	?	?	?	?	
Southern Sr	1355	1164	?	?	?	?	?	?	



Anne Arundel County Public Schools

# Educational Facilities Master Plan

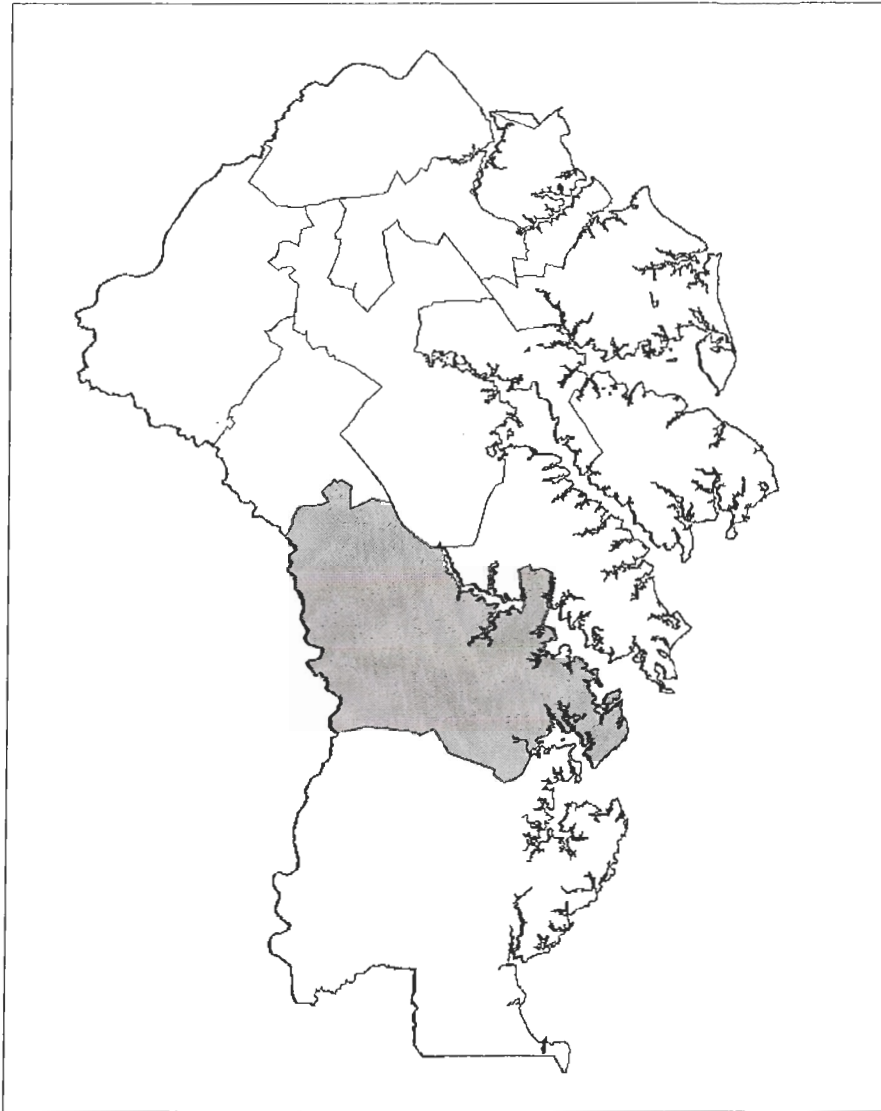


# July 2008

**Kevin M. Maxwell, Ph.D.**, Superintendent of Schools  
Anne Arundel County Public Schools • Planning Office • Pub#1397/2 (Rev. 03/08) • DPS/CH

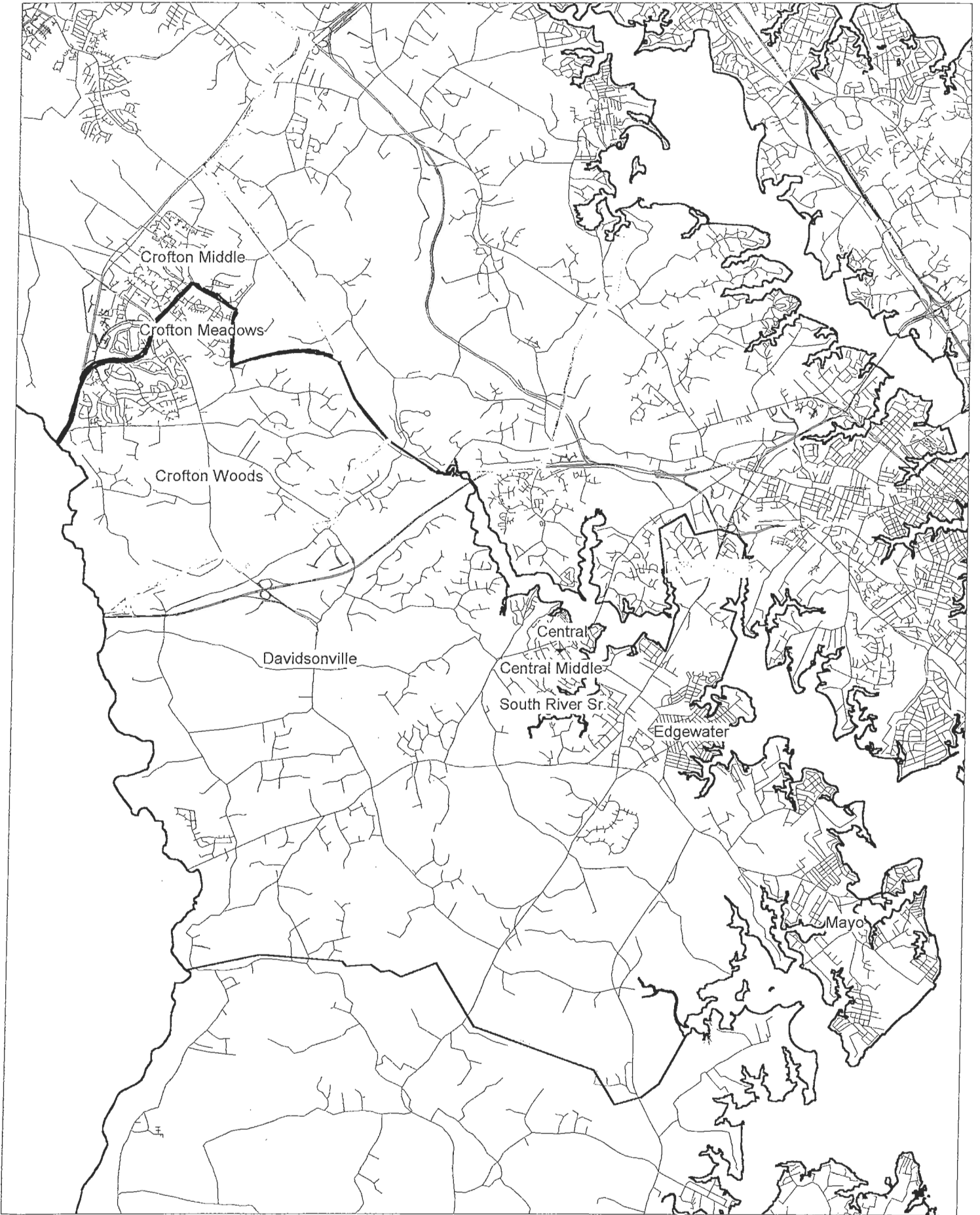


# South River Feeder System



SOUTH RIVER SENIOR HIGH SCHOOL (9-12)  
CENTRAL MIDDLE (6-8)  
CENTRAL ELEMENTARY (K-5)  
DAVIDSONVILLE ELEMENTARY (K-5)  
EDGEWATER ELEMENTARY (K-5)  
MAYO ELEMENTARY (K-5)

SOUTH RIVER SENIOR HIGH SCHOOL (9-12)  
CROFTON MIDDLE (6-8)  
CROFTON MEADOWS ELEMENTARY (K-5)  
CROFTON WOODS ELEMENTARY (K-5)



## FACILITIES/ENROLLMENT COMPARISON SOUTH RIVER FEEDER SYSTEM

Existing School	State Capacity	Grades Served	Actual	PRESENT AND PROJECTED FTE ENROLLMENT												
				2007	2008	2009	2010	2011	2012	2013	2014	2015	2016	2017		
South River Senior ▲	2,133	9-12	1,981	1,933	1,891	1,851	1,832	1,822	1,796	1,796	1,788	1,792	1,832			
Central Middle ▲	1,178	6-8	1,045	1,066	1,050	1,038	1,039	1,037	1,073	1,106	1,139	1,132	1,132			
Crofton Middle* ▲**	1,019	6-8	904	1,099	1,082	1,070	1,069	1,068	1,109	1,143	1,175	1,166	1,166			
Central Elem ▲	635	K-5	669	671	694	714	736	758	760	762	761	768	770			
Crofton Meadows Elem ▲	481	K-5	426	367	339	322	299	283	283	283	283	285	285			
Crofton Woods Elem ▲	527	K-5	561	560	569	581	596	606	604	603	601	603	604			
Davidsonville Elem	595	K-5	622	610	596	562	572	543	544	544	543	545	546			
Edgewater Elem 1 ▲	411	K-5	428	431	435	422	418	394	394	394	394	397	398			
Mayo Elem ▲	352	K-5	315	318	310	303	294	290	291	291	290	292	292			
<b>TOTALS</b>	<b>7,331</b>		<b>6,951</b>	<b>7,055</b>	<b>6,966</b>	<b>6,863</b>	<b>6,855</b>	<b>6,801</b>	<b>6,854</b>	<b>6,922</b>	<b>6,974</b>	<b>6,980</b>	<b>7,025</b>			
<b>ELEM TOTALS</b>	<b>3,001</b>		<b>3,021</b>	<b>2,957</b>	<b>2,943</b>	<b>2,904</b>	<b>2,915</b>	<b>2,874</b>	<b>2,876</b>	<b>2,877</b>	<b>2,872</b>	<b>2,890</b>	<b>2,895</b>			

▲ = Denotes school is located in Priority Funding Area

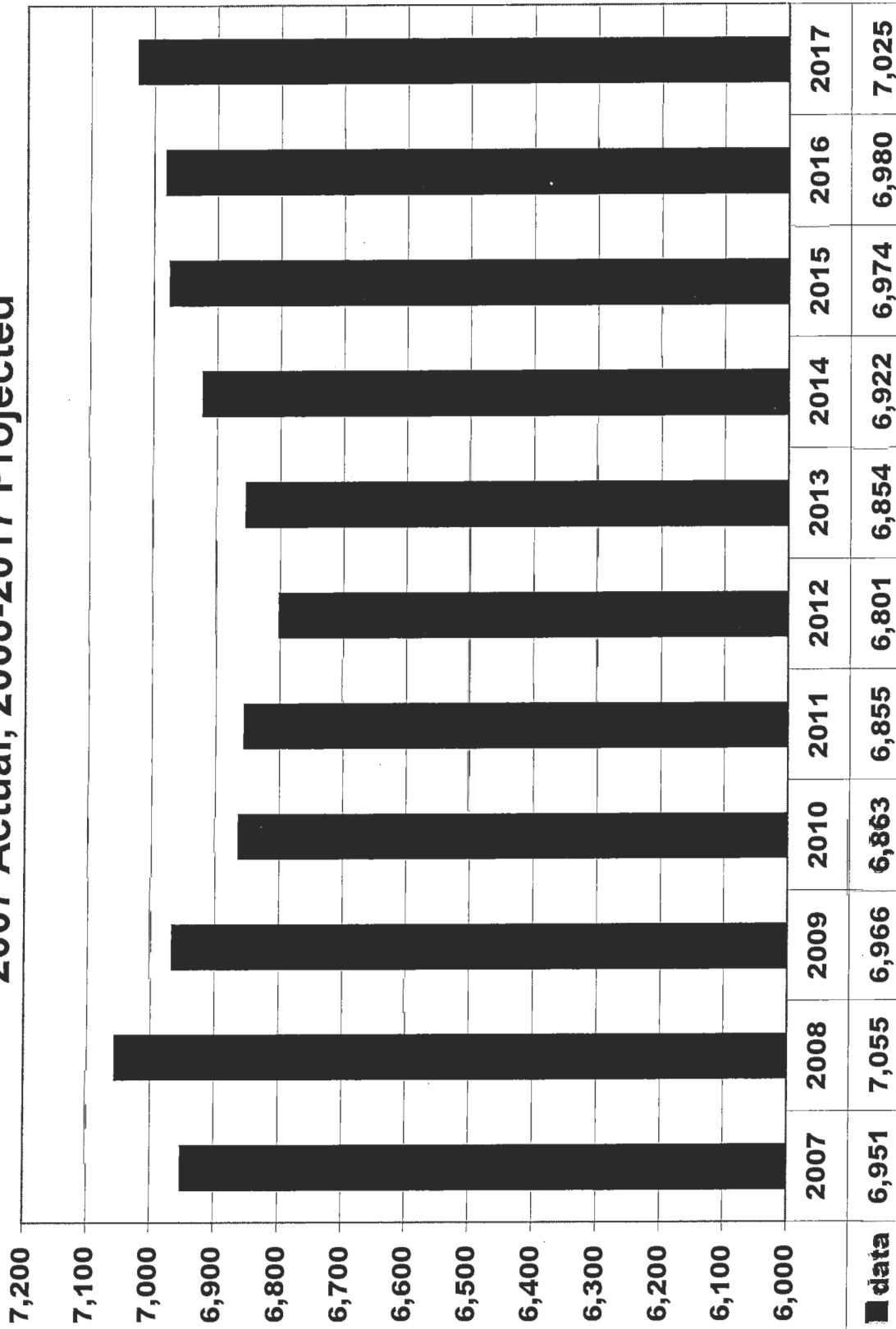
1. Feasibility Study FY14.

\*Crofton Elementary attends Crofton Middle.

\*\*Reflects approved redistricting adopted by the Board of Education on April 16, 2008.

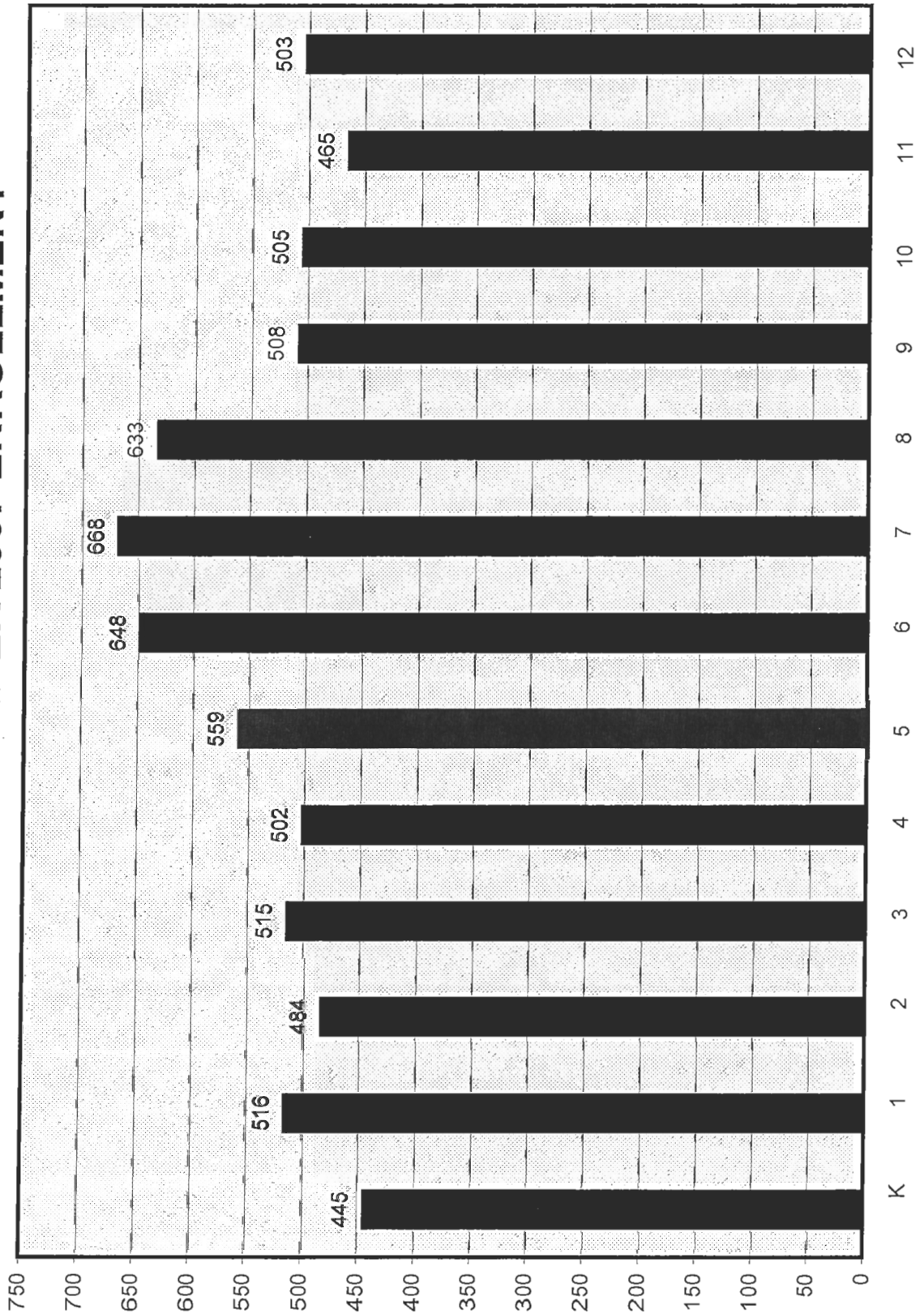
# SOUTH RIVER FEEDER SYSTEM ENROLLMENT

2007 Actual, 2008-2017 Projected





# SOUTH RIVER FEEDER SYSTEM ACTUAL SEPTEMBER 2007 ENROLLMENT



# South River High School

**Geographic/Demographic Component:**<sup>1</sup> South River High School is located within census tracts 7011, 7012, 7013, 7014, and 7023.

**Zoning:**<sup>2</sup> Zoning in this attendance area is predominately R-A, with the Edgewater and Mayo Beach communities providing higher densities of R-5 and R-10. Some commercial areas exist in Londontown and Pinewood areas. Open space areas exist along the waterways and at the Smithsonian Institute.

**Sewer Service:**<sup>3</sup> Sewer service exists in the, Riva Farms, Annapolis Landings, Berkshire, Mayo and Route 214 area as well as parts of Edgewater. The remaining areas are in the no planned service area.

**Water Service:**<sup>3</sup> Water service exists for the Rive Farms, Annapolis Landings, and Berkshire areas. The remaining areas are either in the planned and the no planned service area.

**Development:** The South River Colony Planned Unit Developments (PUD) is located in this area. This PUD proposes to build 900 units. Approximately 90% of these units have been approved. The Maryland Department of Planning has designated this as an area of moderate growth/turnover due to BRAC. (See Appendix "Q").

**Enrollment:** Projected enrollment will decrease over the next ten years.

**Planning:**<sup>6</sup> The 1997 Anne Arundel County General Development Plan (GDP) for this area was updated via the implementation of the Edgewater/Mayo and South County Small Area Plans which went into effect on April 11, 2002 and December 28, 2001 respectively. A complete revised GDP is projected for completion in 2008.

## **Statistical Data:**<sup>1</sup>

Population of attendance area .....	25,502
Number in public schools (K-12) .....	6,889
Percent in public schools .....	27%
Percent non-white .....	7%
Average home value.....	\$240,000
Median income.....	\$84,846

**FACILITIES INVENTORY AND  
ENROLLMENT PROJECTIONS BY GRADE**

*SOUTH RIVER HIGH (Grade 9-12)  
201 Central Avenue, East  
Edgewater*

*State-Rated Capacity: 2,133*

	ACTUAL	PROJECTED										
	2007	2008	2009	2010	2011	2012	2013	2014	2015	2016	2017	
KDGN												
1												
2												
3												
4												
5												
6												
7												
8												
9	508	518	514	504	496	502	487	487	494	500	540	
10	505	459	443	444	434	427	433	433	420	426	432	
11	465	502	467	465	466	456	448	448	453	440	446	
12	503	454	467	438	436	437	428	428	421	426	414	
Total	1,981	1,933	1,891	1,851	1,832	1,822	1,796	1,796	1,788	1,792	1,832	
FTE	1,981	1,933	1,891	1,851	1,832	1,822	1,796	1,796	1,788	1,792	1,832	

Date of Occupancy: 1978

Science Lab Renovation: 2001

Evaluation of physical condition - Fair

Size of existing building: 295,900 sq.ft.

Acreage of site: 60.19 acres (Shares site with  
Central Middle, Central Elem, Central Special,  
and CAT-South)

# Central Middle School

**Geographic/Demographic Component:**<sup>1</sup> Central Middle School is located within census tracts 7011, 7012, 7013, 7014, and 7023.

**Zoning:**<sup>2</sup> Zoning in this attendance area is predominately R-A, with the Edgewater and Mayo Beach communities providing higher densities of R-5 and R-10. Some commercial areas exist in Londontown and Pinewood areas. Open space areas exist along the waterways and at the Smithsonian Institute.

**Sewer Service:**<sup>3</sup> Sewer service exists in the Riva Farms, Annapolis Landings, Berkshire, Mayo and Route 214 area as well as parts of Edgewater. The remaining areas are either in the planned and the no planned service area.

**Water Service:**<sup>3</sup> Water service exists for the Riva Farms, Annapolis Landings, and Berkshire areas. The remaining area is in the no planned service area.

**Development:** The South River Colony Planned Unit Developments (PUD) is located in this area. This PUD proposes to build 900 units. Approximately 90% of these units have been approved.

**Enrollment:** Enrollment is expected to increase but remain below capacity.

**Planning:**<sup>6</sup> The 1997 Anne Arundel County General Development Plan (GDP) for this area was updated via the implementation of the Edgewater/Mayo and South County Small Area Plans which went into effect on April 11, 2002 and December 28, 2001 respectively. A complete revised GDP is projected for completion in 2008.

**FACILITIES INVENTORY AND  
ENROLLMENT PROJECTIONS BY GRADE**

*CENTRAL MIDDLE (Grade 6-8)  
221 Central Avenue East  
Edgewater*

*State-Rated Capacity: 1,178*

	ACTUAL	PROJECTED									
	2007	2008	2009	2010	2011	2012	2013	2014	2015	2016	2017
KDGN											
1											
2											
3											
4											
5											
6	345	341	339	329	335	339	366	367	369	358	358
7	376	349	343	347	337	342	346	373	375	378	378
8	324	376	368	362	367	356	361	366	395	396	396
9											
10											
11											
12											
<b>Total</b>	<b>1,045</b>	<b>1,066</b>	<b>1,050</b>	<b>1,038</b>	<b>1,039</b>	<b>1,037</b>	<b>1,073</b>	<b>1,106</b>	<b>1,139</b>	<b>1,132</b>	<b>1,132</b>
<b>FTE</b>	<b>1,045</b>	<b>1,066</b>	<b>1,050</b>	<b>1,038</b>	<b>1,039</b>	<b>1,037</b>	<b>1,073</b>	<b>1,106</b>	<b>1,139</b>	<b>1,132</b>	<b>1,132</b>

Date of Occupancy: 1977  
Addition/Renovation

Size of existing building: 158,125 sq.ft.  
Acreage of site: 40 acres (Shares site with  
South River Sr, Central Elem, Central Special,  
and CAT-South)

Evaluation of physical condition - Good



# Central Elementary School

**Geographic/Demographic Component:**<sup>1</sup> Central Elementary School is located within census tracts 7011, 7012, and 7014.

**Zoning:**<sup>2</sup> Zoning in the Central Elementary attendance area is predominately R-A, with R-1 zoning north of Route 214 along Loch Haven Road. The existing community of Loch Haven is zoned R-5. The communities of Riva Farms, Annapolis Landings, and Berkshire are zoned R-2 and R-5. New PUD development, known as South River Colony, with 900 units, will be developed in the next five to ten years.

**Sewer Service:**<sup>3</sup> Sewer service exists in the Riva Farms, Annapolis Landings, Berkshire, Mayo and Route 214 area. The remaining areas are either in the planned and the no planned service area.

**Water Service:**<sup>3</sup> Water service exists for the Rive Farms, Annapolis Landings, and Berkshire areas. The remaining area is in the no planned service area.

**Development:** The South River Colony Planned Unit Developments (PUD) is located in this area. This PUD proposes to build 900 units, approximately half of these units have been approved. The estimated number of elementary school students that this development will generate is 206. Ultimate build out of this community goes beyond the ten-year projection listed on the previous page.

**Enrollment:** Enrollment exceeds capacity and is projected to increase through 2017. All Day Kindergarten was implemented in the fall of 2006.

**Planning:**<sup>6</sup> The 1997 Anne Arundel County General Development Plan (GDP) for this area was updated via the implementation of the Edgewater/Mayo and South County Small Area Plans which went into effect on April 11, 2002 and December 28, 2001 respectively. A complete revised GDP is projected for completion in 2008.

**FACILITIES INVENTORY AND  
ENROLLMENT PROJECTIONS BY GRADE**

*CENTRAL ELEMENTARY (Grade K-5)  
130 Stepney Lane  
Edgewater*

*State Rated Capacity: 635*

	ACTUAL					PROJECTED					
	2007	2008	2009	2010	2011	2012	2013	2014	2015	2016	2017
KDGN	116	118	118	115	117	118	118	119	119	121	121
1	106	128	129	130	126	128	130	130	130	131	131
2	108	108	127	128	129	125	127	129	129	129	130
3	106	106	108	127	128	129	125	127	129	129	128
4	105	106	106	108	128	129	130	126	127	130	130
5	128	105	106	106	108	129	130	131	127	128	130
6											
7											
8											
9											
10											
11											
12											
<b>Total</b>	<b>669</b>	<b>671</b>	<b>694</b>	<b>714</b>	<b>736</b>	<b>758</b>	<b>760</b>	<b>762</b>	<b>761</b>	<b>768</b>	<b>770</b>
<b>FTE</b>	<b>669</b>	<b>671</b>	<b>694</b>	<b>714</b>	<b>736</b>	<b>758</b>	<b>760</b>	<b>762</b>	<b>761</b>	<b>768</b>	<b>770</b>

Date of Occupancy: 1972  
 Addition/Renovation: Boiler Room Addition 2003  
 Evaluation of physical condition - Good

Size of existing building: 73,113 sq.ft.  
 Acreage of site: 24.05 acres (Shares site w/  
 South River Sr, Central Middle, Central  
 Special, and CAT-South)  
 Current Relocatables: 4

# Davidsonville Elementary School

**Geographic/Demographic Component:**<sup>1</sup> Davidsonville Elementary School is located within census tracts 7013 and 7023.

**Zoning:**<sup>2</sup> Zoning in the Davidsonville attendance area is predominately R-A, with small portions of R-2 and R-5 bordering the shores of the South River.

**Sewer Service:**<sup>3</sup> The entire area is in the no planned service area.

**Water Service:**<sup>3</sup> The entire area is in the no planned service area.

**Development:** This area has experienced a high rate of residential development in the past four years.

**Enrollment:** A new facility opened in 2002. Enrollment is projected to decrease through 2017. All Day Kindergarten was implemented in the fall of 2006.

**Planning:**<sup>6</sup> The 1997 Anne Arundel County General Development Plan (GDP) for this area was updated via the implementation of the Edgewater/Mayo and South County Small Area Plans which went into effect on April 11, 2002 and December 28, 2001 respectively. A complete revised GDP is projected for completion in 2008.

**FACILITIES INVENTORY AND  
ENROLLMENT PROJECTIONS BY GRADE**

**DAVIDSONVILLE ELEMENTARY (Grade K-5)**  
*962 Central Avenue, West  
 Davidsonville*

*State-Rated Capacity: 595*

	ACTUAL	PROJECTED									
	2007	2008	2009	2010	2011	2012	2013	2014	2015	2016	2017
KDGN	84	85	85	83	84	84	84	85	85	86	86
1	117	93	93	94	91	92	93	92	93	93	93
2	82	120	92	92	93	90	91	92	91	92	92
3	125	81	120	92	92	93	90	91	92	91	91
4	106	125	81	120	92	92	93	90	91	92	92
5	108	106	125	81	120	92	93	94	91	91	92
6											
7											
8											
9											
10											
11											
12											
<b>Total</b>	<b>622</b>	<b>610</b>	<b>596</b>	<b>562</b>	<b>572</b>	<b>543</b>	<b>544</b>	<b>544</b>	<b>543</b>	<b>545</b>	<b>546</b>
<b>FTE</b>	<b>622</b>	<b>610</b>	<b>596</b>	<b>562</b>	<b>572</b>	<b>543</b>	<b>544</b>	<b>544</b>	<b>543</b>	<b>545</b>	<b>546</b>

Date of Occupancy: 2002  
 Original Building Occupied: 1961  
 Evaluation of physical condition - Excellent

Size of existing building: 69,111 sq.ft.  
 Acreage of site: 18.67 acres  
 Current Relocatables: 2

# Edgewater Elementary School

**Geographic/Demographic Component:**<sup>1</sup> Edgewater Elementary School is located within census tract 7011.

**Zoning:**<sup>2</sup> Zoning in the Edgewater attendance area is primarily R-5, with commercial districts located along Mayo Road and at the intersection of Solomons Island Road and Mayo Road.

**Sewer Service:**<sup>3</sup> Sewer service exists in most of the area. The eastern side of Route 253 and Pine Whiff Beach are in the planned service area. The remaining area is in the future service area.

**Water Service:**<sup>3</sup> Water service exists in most of the area. The eastern side of Route 253 and Pine Whiff Beach are in the planned service area. The remaining area is in the future service area.

**Development:** This area has experienced a moderate rate of residential development in the past four years and is projected to continue through 2012.

**Enrollment:** Enrollment is projected to decrease slightly through 2017. All Day Kindergarten was implemented in the fall of 2006.

**Planning:**<sup>6</sup> The 1997 Anne Arundel County General Development Plan (GDP) for this area was updated via the implementation of the Edgewater/Mayo and South County Small Area Plans which went into effect on April 11, 2002 and December 28, 2001 respectively. A complete revised GDP is projected for completion in 2008.

**FACILITIES INVENTORY AND  
ENROLLMENT PROJECTIONS BY GRADE**

***EDGEWATER ELEMENTARY (Grade K-5)***  
*121 Washington Road*  
*Edgewater*

*State-Rated Capacity: 411*

	ACTUAL				PROJECTED						
	2007	2008	2009	2010	2011	2012	2013	2014	2015	2016	2017
KDGN	61	62	62	60	61	61	61	62	62	63	63
1	88	68	68	68	66	67	67	67	68	68	68
2	71	90	67	67	67	65	67	66	66	67	67
3	78	70	90	67	67	67	65	67	66	66	67
4	63	78	70	90	67	67	67	65	67	66	67
5	67	63	78	70	90	67	67	67	65	67	66
6											
7											
8											
9											
10											
11											
12											
<b>Total</b>	428	431	435	422	418	394	394	394	394	397	398
<b>FTE</b>	428	431	435	422	418	394	394	394	394	397	398

Date of Occupancy: 1953  
 Addition/Renovation: 1964, 1985  
 Evaluation of physical condition - Fair  
***Feasibility Study FY14***

Size of existing building: 52,326 sq.ft.  
 Acreage of site: 14.36 acres  
 Current Relocatables: 3  
 Three modular classrooms attached to building



# Mayo Elementary School

**Geographic/Demographic Component:**<sup>1</sup> Mayo Elementary School is located within census tract 7012.

**Zoning:**<sup>2</sup> The central portion of the attendance area is zoned R-2, with several small portions of commercial development. To the north and south, R-5 zoning provides single family housing communities. The eastern portion of the area is zoned for deferred development. This would have a major impact upon school facilities.

**Sewer Service:**<sup>3</sup> Sewer service exists in most of the area. The central portion is in the planned service area.

**Water Service:**<sup>3</sup> The entire area is in the no planned service area.

**Development:** This area has experienced a moderate rate of residential development in the past four years due to the availability of sewer service.

**Enrollment:** A replacement school opened in 2005. Enrollment is projected to remain stable near capacity through 2017.

**Planning:**<sup>6</sup> The 1997 Anne Arundel County General Development Plan (GDP) for this area was updated via the implementation of the Edgewater/Mayo and South County Small Area Plans which went into effect on April 11, 2002 and December 28, 2001 respectively. A complete revised GDP is projected for completion in 2008.

**FACILITIES INVENTORY AND  
ENROLLMENT PROJECTIONS BY GRADE**

**MAYO ELEMENTARY (Grade K-5)**  
*1260 Mayo Ridge Road*  
*Edgewater*

*State-Rated Capacity: 352*

	ACTUAL	PROJECTED									
	2007	2008	2009	2010	2011	2012	2013	2014	2015	2016	2017
KDGN	43	45	45	44	45	45	45	45	45	46	46
1	51	49	49	50	48	49	50	49	49	49	50
2	58	53	49	49	50	48	49	50	49	49	48
3	55	58	53	49	49	50	48	49	50	49	49
4	56	56	58	53	49	49	50	48	49	50	49
5	52	57	56	58	53	49	49	50	48	49	50
6											
7											
8											
9											
10											
11											
12											
<b>Total</b>	<b>315</b>	<b>318</b>	<b>310</b>	<b>303</b>	<b>294</b>	<b>290</b>	<b>291</b>	<b>291</b>	<b>290</b>	<b>292</b>	<b>292</b>
<b>FTE</b>	<b>315</b>	<b>318</b>	<b>310</b>	<b>303</b>	<b>294</b>	<b>290</b>	<b>291</b>	<b>291</b>	<b>290</b>	<b>292</b>	<b>292</b>

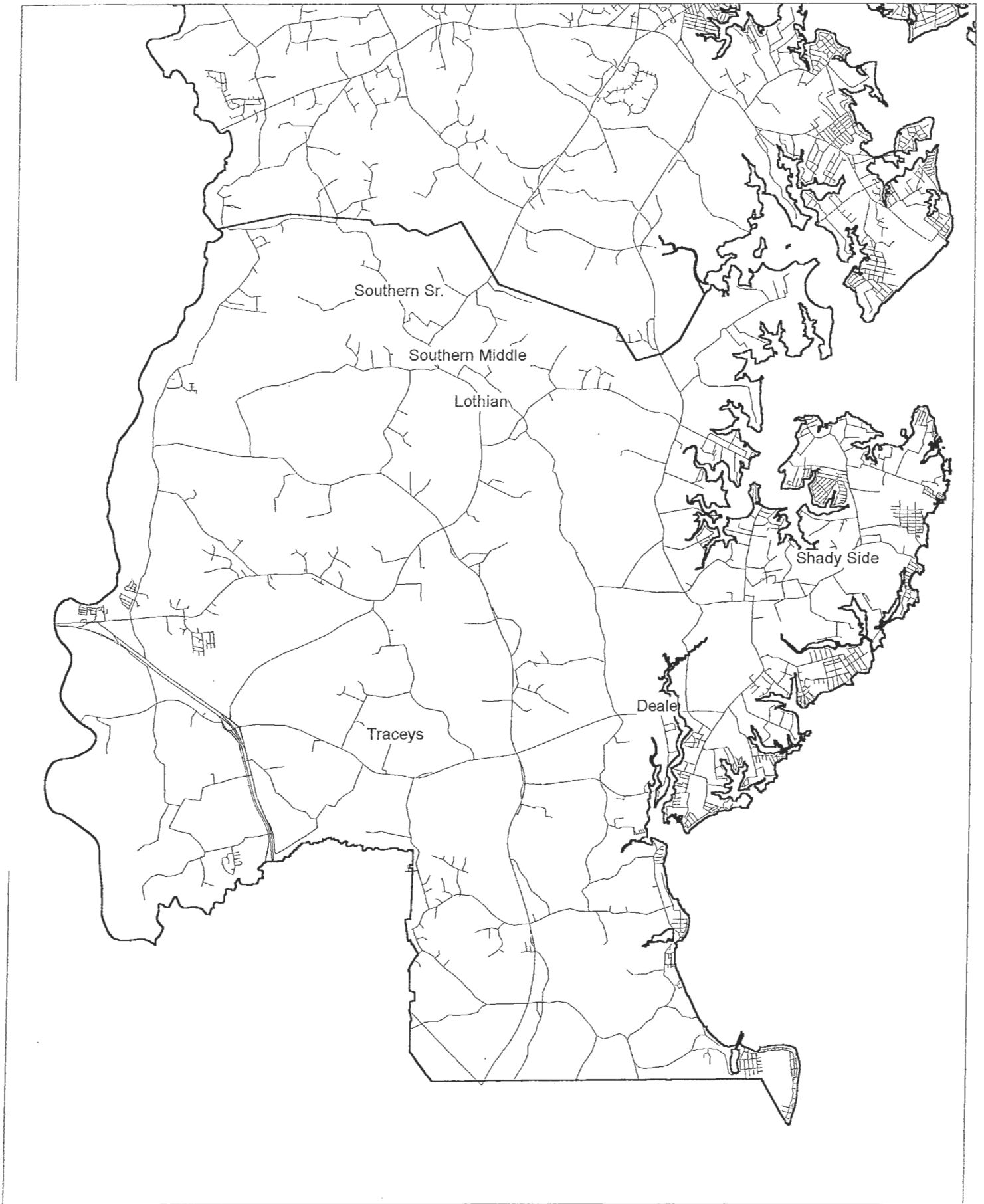
Date of Occupancy: 2005  
Original Building Occupied: 1936  
Evaluation of physical condition - Excellent

Size of existing building: 60,648 sq.ft.  
Acreage of site: 7.279 acres

# Southern Feeder System



SOUTHERN SENIOR HIGH SCHOOL (9-12)  
SOUTHERN MIDDLE (6-8)  
DEALE ELEMENTARY (K-5)  
LOTHIAN ELEMENTARY (PREK-5)  
SHADY SIDE ELEMENTARY (K-5)  
TRACEY'S ELEMENTARY (K-5)



## FACILITIES/ENROLLMENT COMPARISON SOUTHERN FEEDER SYSTEM

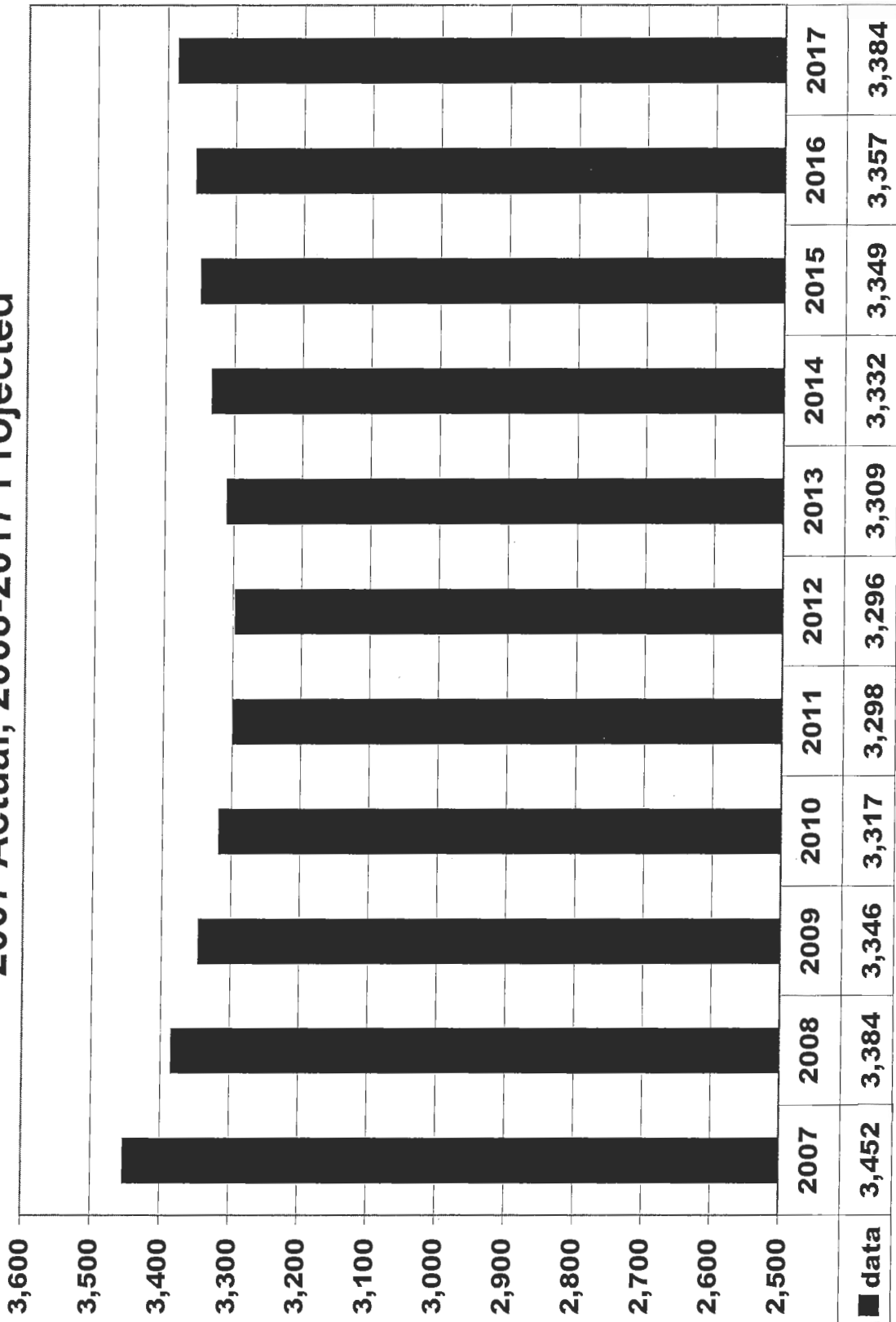
Existing School	State Capacity	Grades Served	Actual	PRESENT AND PROJECTED FTE ENROLLMENT												
				2007	2008	2009	2010	2011	2012	2013	2014	2015	2016	2017		
Southern Senior	1,355	9-12	1,192	1,164	1,140	1,115	1,104	1,098	1,082	1,082	1,078	1,082	1,082	1,082	1,106	
Southern Middle	1,091	6-8	794	746	734	726	726	726	753	776	799	799	794	794	794	
Deale Elem ▲	330	K-5	288	277	272	260	260	233	233	233	232	232	233	233	233	
Lothian Elem 1	499	PreK-5	507	522	534	554	548	569	570	570	569	570	572	572	573	
Shady Side Elem 2	502	K-5	410	421	412	414	409	406	406	406	406	406	409	409	410	
Tracey's Elem	397	K-5	261	254	254	248	251	264	265	265	265	265	267	267	268	
<b>TOTALS</b>	<b>4,174</b>		<b>3,452</b>	<b>3,384</b>	<b>3,346</b>	<b>3,317</b>	<b>3,298</b>	<b>3,296</b>	<b>3,309</b>	<b>3,332</b>	<b>3,349</b>	<b>3,349</b>	<b>3,357</b>	<b>3,384</b>	<b>3,384</b>	
<b>ELEM TOTALS</b>	<b>1,728</b>		<b>1,466</b>	<b>1,474</b>	<b>1,472</b>	<b>1,476</b>	<b>1,468</b>	<b>1,472</b>	<b>1,474</b>	<b>1,474</b>	<b>1,472</b>	<b>1,472</b>	<b>1,481</b>	<b>1,481</b>	<b>1,484</b>	

▲ = Denotes school is located in Priority Funding Area

1. Feasibility Study FY10.
2. Feasibility Study FY13.

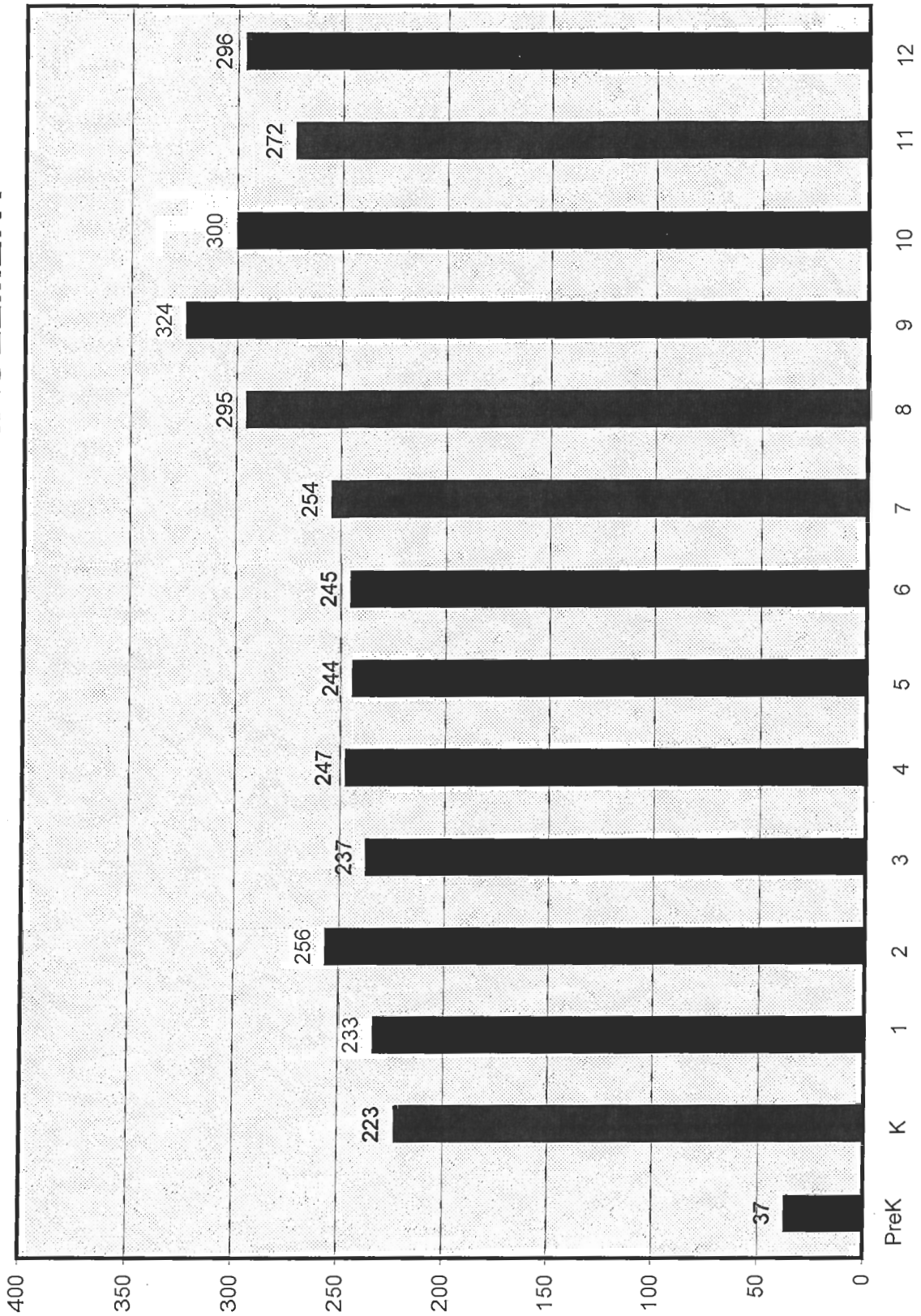
# SOUTHERN FEEDER SYSTEM ENROLLMENT

## 2007 Actual, 2008-2017 Projected





# SOUTHERN FEEDER SYSTEM ACTUAL SEPTEMBER 2007 ENROLLMENT



# Southern High School

**Geographic/Demographic Component:**<sup>1</sup> Southern High School is located within census tracts 7013, 7014, 7070.01, and 7080.

**Zoning:**<sup>2</sup> Zoning in the Southern High School attendance area is predominately R-A, with higher densities of R-2 and R-5 along the river inlet communities and those communities fronting on the Chesapeake Bay. Marina-related industry and commercial districts exist along these waterways.

**Sewer Service:**<sup>3</sup> Sewer service exists in the Shady Side, Deale and Galesville areas. The undeveloped area adjacent to Shady Side and Deale are in the planned service area. The remaining areas are in the no planned service area.

**Water Service:**<sup>3</sup> The entire area is in the no planned service area.

**Enrollment:** Enrollment is projected to decrease through the year 2017.

**Planning:**<sup>6</sup> The 1997 Anne Arundel County General Development Plan (GDP) for this area was updated via the implementation of the South County and Deale/Shady Side Small Area Plans which went into effect on December 28, 2001 and July 23, 2001 respectively. A complete revised GDP is projected for completion in 2008.

## **Statistical Data:**<sup>1</sup>

Population of attendance area .....	24,233
Number in public schools (PreK-12) .....	3,536
Percent in public schools .....	15%
Percent non-white .....	16%
Average home value.....	\$235,700
Median income.....	\$71,901

**FACILITIES INVENTORY AND  
ENROLLMENT PROJECTIONS BY GRADE**

*SOUTHERN HIGH (Grade 9-12)  
4400 Solomons Island Road  
Harwood*

*State-Rated Capacity: 1,355*

	ACTUAL	PROJECTED									
	2007	2008	2009	2010	2011	2012	2013	2014	2015	2016	2017
KDGN											
1											
2											
3											
4											
5											
6											
7											
8											
9	324	331	328	321	316	320	311	311	316	320	345
10	300	272	263	263	257	253	256	256	248	252	255
11	272	294	274	273	274	268	263	263	266	259	262
12	296	267	275	258	257	257	252	252	248	251	244
Total	1,192	1,164	1,140	1,115	1,104	1,098	1,082	1,082	1,078	1,082	1,106
FTE	1,192	1,164	1,140	1,115	1,104	1,098	1,082	1,082	1,078	1,082	1,106

Date of Occupancy: 1968  
Addition/Renovation

Size of existing building: 226,206 sq.ft.  
Acreage of site: 59.926 acres

Evaluation of physical condition - Fair

# Southern Middle School

**Geographic/Demographic Component:**<sup>1</sup> Southern Middle School is located within census tracts 7013, 7014, 7070, and 7080.

**Zoning:**<sup>2</sup> Zoning in the Southern Middle attendance area is predominately R-A, with higher densities of R-2 and R-5 along the river inlet communities and those communities fronting the Chesapeake Bay. Marina-related industry and commercial districts exist along these waterways.

**Sewer Service:**<sup>3</sup> Sewer service exists in the Shady Side, Deale and Galesville areas. The undeveloped area adjacent to Shady Side and Deale are in the planned service area. The remaining areas are in the no planned service area.

**Water Service:**<sup>3</sup> The entire area is in the no planned service area.

**Enrollment:** Adequate capacity exists at this school through at least 2017.

**Planning:**<sup>6</sup> The 1997 Anne Arundel County General Development Plan (GDP) for this area was updated via the implementation of the South County and Deale/Shady Side Small Area Plans which went into effect on December 28, 2001 and July 23, 2001 respectively. A complete revised GDP is projected for completion in 2008.

**FACILITIES INVENTORY AND  
ENROLLMENT PROJECTIONS BY GRADE**

*SOUTHERN MIDDLE (Grade 6-8)  
5235 Solomons Island Road  
Lothian*

*State-Rated Capacity: 1,091*

	ACTUAL	PROJECTED									
	2007	2008	2009	2010	2011	2012	2013	2014	2015	2016	2017
KDGN											
1											
2											
3											
4											
5											
6	245	244	242	235	239	242	262	263	265	257	257
7	254	248	244	247	240	244	247	266	267	269	269
8	295	254	248	244	247	240	244	247	267	268	268
9											
10											
11											
12											
<b>Total</b>	<b>794</b>	<b>746</b>	<b>734</b>	<b>726</b>	<b>726</b>	<b>726</b>	<b>753</b>	<b>776</b>	<b>799</b>	<b>794</b>	<b>794</b>
<b>FTE</b>	<b>794</b>	<b>746</b>	<b>734</b>	<b>726</b>	<b>726</b>	<b>726</b>	<b>753</b>	<b>776</b>	<b>799</b>	<b>794</b>	<b>794</b>

Date of Occupancy: 1933  
 Addition/Renovation: 1948, 1949, 1951  
 1959, 1988, 2002  
 Evaluation of physical condition - Good

Size of existing building: 200,102 sq.ft.  
 Acreage of site: 32.21 acres  
 Current Relocatables: 8

# Deale Elementary School

**Geographic/Demographic Component:**<sup>1</sup> Deale Elementary School is located within census tract 7070.

**Zoning:**<sup>2</sup> Zoning in the Deale attendance area is predominately R-5, with several areas of commercial marina district.

**Sewer Service:**<sup>3</sup> Sewer service exists in the Deale area. The undeveloped area adjacent to Deale is in the planned service area. The remaining areas are in the no planned service area.

**Water Service:**<sup>3</sup> The entire area is in the no planned service area.

**Development:** This area has experienced a low rate of residential development in the past four years.

**Enrollment:** Enrollment is projected to decrease through the year 2017.

**Planning:**<sup>6</sup> The 1997 Anne Arundel County General Development Plan (GDP) for this area was updated via the implementation of the South County and Deale/Shady Side Small Area Plans which went into effect on December 28, 2001 and July 23, 2001 respectively. A complete revised GDP is projected for completion in 2008.



**FACILITIES INVENTORY AND  
ENROLLMENT PROJECTIONS BY GRADE**

***DEALE ELEMENTARY (Grade K-5)  
959 Masons Beach Road  
Deale***

*State-Rated Capacity: 330*

	ACTUAL	PROJECTED									
	2007	2008	2009	2010	2011	2012	2013	2014	2015	2016	2017
KDGN	35	35	35	34	35	35	35	35	35	35	35
1	64	39	38	39	37	38	39	38	38	38	38
2	39	65	39	38	39	37	38	39	38	38	38
3	50	38	65	39	38	39	37	38	39	38	38
4	43	50	38	65	39	38	39	37	38	39	38
5	50	43	50	38	65	39	38	39	37	38	39
6											
7											
8											
9											
10											
11											
12											
ECI	13	13	13	13	13	13	13	13	13	13	13
Total	294	283	278	266	266	239	239	239	238	239	239
FTE	288	277	272	260	260	233	233	233	232	233	233

Date of Occupancy: 1962  
Addition/Renovation: 1994

Size of existing building: 53,444 sq.ft.  
Acreage of site: 17.07 acres

Evaluation of physical condition - Good

# Lothian Elementary School

**Geographic/Demographic Component:**<sup>1</sup> Lothian Elementary School is located within census tracts 7013, 7014, and 7080.

**Zoning:**<sup>2</sup> Zoning in the Lothian area is R-A, with pockets of R-1.

**Sewer Service:**<sup>3</sup> Sewer service exists in the Galesville areas. The remaining areas are in the no planned service area.

**Water Service:**<sup>3</sup> The entire area is in the no planned service area.

**Enrollment:** Enrollment is expected to exceed capacity and is projected to increase slightly through the year 2017.

**Planning:**<sup>6</sup> The 1997 Anne Arundel County General Development Plan (GDP) for this area was updated via the implementation of the South County and Deale/Shady Side Small Area Plans which went into effect on December 28, 2001 and July 23, 2001 respectively. A complete revised GDP is projected for completion in 2008.

**FACILITIES INVENTORY AND  
ENROLLMENT PROJECTIONS BY GRADE**

***LOTHIAN ELEMENTARY (Grade PreK-5)  
5175 Solomons Island Road  
Lothian***

*State-Rated Capacity: 499*

	ACTUAL					PROJECTED					
	2007	2008	2009	2010	2011	2012	2013	2014	2015	2016	2017
KDGN	85	86	86	84	85	85	85	86	86	87	87
1	69	94	94	95	92	93	94	93	94	95	94
2	100	71	93	93	94	91	92	93	92	93	94
3	72	98	71	93	93	94	91	92	93	92	92
4	81	72	98	71	93	93	94	91	92	93	93
5	81	81	72	98	71	93	94	95	92	92	93
6											
7											
8											
9											
10											
11											
12											
PreK	37	40	40	40	40	40	40	40	40	40	40
Total	525	542	554	574	568	589	590	590	589	592	593
FTE	507	522	534	554	548	569	570	570	569	572	573

Date of Occupancy: 1956  
 Addition/Renovation: 1966, 1977, 1993  
 Evaluation of physical condition - Good  
**Feasibility Study FY10**

Size of existing building: 66,281 sq.ft.  
 Acreage of site: 17.06 acres  
 Current Relocatables: 1  
 Three modular classrooms attached to building

# Shady Side Elementary School

**Geographic/Demographic Component:**<sup>1</sup> Shady Side Elementary School is located within census tract 7070.

**Zoning:**<sup>2</sup> Zoning in the Shady Side attendance area is predominately R-1, with a variety of other zoning. The higher density of R-5 is found in the Franklin Manor, Cedarhurst, Avalon Shores, and Curtis Point communities. Portions north of Steamboat Road are zoned R-2. Several commercial marina districts exist along the waterfront.

**Sewer Service:**<sup>3</sup> Sewer service exists in the Shady Side area. The undeveloped area adjacent to Shady Side are in the planned service area. The remaining areas are in the no planned service area.

**Water Service:**<sup>3</sup> The entire area is in the no planned service area.

**Enrollment:** Enrollment is projected to decrease slightly through 2017.

**Planning:**<sup>6</sup> The 1997 Anne Arundel County General Development Plan (GDP) for this area was updated via the implementation of the South County and Deale/Shady Side Small Area Plans which went into effect on December 28, 2001 and July 23, 2001 respectively. A complete revised GDP is projected for completion in 2008.

**FACILITIES INVENTORY AND  
ENROLLMENT PROJECTIONS BY GRADE**

***SHADY SIDE ELEMENTARY (Grade K-5)  
4859 Atwell Road at Snug Harbor Road  
Shady Side***

*State-Rated Capacity: 502*

	ACTUAL				PROJECTED						
	2007	2008	2009	2010	2011	2012	2013	2014	2015	2016	2017
KDGN	63	64	64	62	63	63	63	64	64	65	65
1	69	70	70	70	68	69	69	69	70	70	70
2	74	71	69	69	69	67	69	68	68	69	69
3	65	73	71	69	69	69	67	69	68	68	69
4	78	65	73	71	69	69	69	67	69	68	69
5	61	78	65	73	71	69	69	69	67	69	68
6											
7											
8											
9											
10											
11											
12											
<b>Total</b>	<b>410</b>	<b>421</b>	<b>412</b>	<b>414</b>	<b>409</b>	<b>406</b>	<b>406</b>	<b>406</b>	<b>406</b>	<b>409</b>	<b>410</b>
<b>FTE</b>	<b>410</b>	<b>421</b>	<b>412</b>	<b>414</b>	<b>409</b>	<b>406</b>	<b>406</b>	<b>406</b>	<b>406</b>	<b>409</b>	<b>410</b>

Date of Occupancy: 1971

Addition/Renovation: Boiler Room Addition 2003

Evaluation of physical condition - Good

***Feasibility Study FY13***

Size of existing building: 73,113 sq.ft.

Acreage of site: 17.05 acres

Current Relocatables: 1

# Tracey's Elementary School

**Geographic/Demographic Component:**<sup>1</sup> Tracey's Elementary School is located within census tracts 7070 and 7080.

**Zoning:**<sup>2</sup> Zoning in the Tracey's attendance area is predominately R-A, with R-1 and R-2 zoning existing in the Fair Haven area and R-5 zoning existing in the Rose Haven area.

**Sewer Service:**<sup>3</sup> Sewer service exists for the Fair Haven area. The undeveloped portions of Fair Haven are in the planned service area. The remaining areas are in the no planned service area.

**Water Service:**<sup>3</sup> The entire area is in the no planned service area.

**Enrollment:** Enrollment remains stable through 2017. In the fall of 2005, Tracey's Elementary was relocated to Southern Middle during the renovation/construction project. Students were returned to Tracey's in January 2008. All Day Kindergarten was implemented in the fall of 2007.

**Planning:**<sup>6</sup> The 1997 Anne Arundel County General Development Plan (GDP) for this area was updated via the implementation of the South County and Deale/Shady Side Small Area Plans which went into effect on December 28, 2001 and July 23, 2001 respectively. A complete revised GDP is projected for completion in 2008.



**FACILITIES INVENTORY AND  
ENROLLMENT PROJECTIONS BY GRADE**

*TRACEY'S ELEMENTARY (Grade K-5)  
20 Deale Road  
Tracey's Landing*

*State-Rated Capacity: 397*

	ACTUAL				PROJECTED						
	2007	2008	2009	2010	2011	2012	2013	2014	2015	2016	2017
KDGN	40	41	41	40	41	41	41	41	41	42	42
1	31	44	45	45	44	45	45	45	45	45	46
2	43	32	44	45	45	44	45	45	45	45	45
3	50	42	32	44	45	45	44	45	45	45	45
4	45	50	42	32	44	45	45	44	45	45	45
5	52	45	50	42	32	44	45	45	44	45	45
6											
7											
8											
9											
10											
11											
12											
<b>Total</b>	<b>261</b>	<b>254</b>	<b>254</b>	<b>248</b>	<b>251</b>	<b>264</b>	<b>265</b>	<b>265</b>	<b>265</b>	<b>267</b>	<b>268</b>
<b>FTE</b>	<b>261</b>	<b>254</b>	<b>254</b>	<b>248</b>	<b>251</b>	<b>264</b>	<b>265</b>	<b>265</b>	<b>265</b>	<b>267</b>	<b>268</b>

Date of Occupancy: 1962

Modernization/Addition: 2008

Evaluation of physical condition - Excellent

Size of existing building: 56,640 sq.ft.

Acreage of site: 14.20 acres

Current Relocatables: 4

**Ethnic/Grade Distribution Key****Ethnicity**

1	American Indian/Native Alaskan
2	Asian/Pacific Islander
3	African American
4	White
5	Hispanic
Blank	No response given

**Grade**

00	Kindergarten
01	First Grade
02	Second Grade
03	Third Grade
04	Fourth Grade
05	Fifth Grade
06	Sixth Grade
07	Seventh Grade
08	Eighth Grade
09	Ninth Grade
10	Tenth Grade
11	Eleventh Grade
12	Twelfth Grade
92	Pre-Kindergarten
93	Early Childhood Intervention (ECI)

Central Elementary School  
ETHNIC DISTRIBUTION

Grade Level	Gender	Code:	1	2	3	4	5	lank	Inv	All
Grade: 0	Females		0	1	3	55	0	0	0	59
	Males		0	0	2	58	1	0	0	61
	Total		0	1	5	113	1	0	0	120
Grade: 1	Females		0	2	0	56	1	0	0	59
	Males		0	1	2	58	1	0	0	62
	Total		0	3	2	114	2	0	0	121
Grade: 2	Females		0	3	1	50	1	0	0	55
	Males		1	2	1	46	2	0	0	52
	Total		1	5	2	96	3	0	0	107
Grade: 3	Females		0	1	0	49	0	0	0	50
	Males		0	1	2	54	0	0	0	57
	Total		0	2	2	103	0	0	0	107
Grade: 4	Females		0	2	1	44	1	0	0	48
	Males		0	0	4	54	3	0	0	61
	Total		0	2	5	98	4	0	0	109

09/12/08  
13:06

Central Elementary School  
ETHNIC DISTRIBUTION

Grade Level	Gender	Code:	1	2	3	4	5	lank	Inv	All
Grade: 5	Females		0	1	9	39	0	0	0	49
	Males		1	0	3	61	0	0	0	65
	Total		1	1	12	100	0	0	0	114
Total:	Females		0	10	14	293	3	0	0	320
	Males		2	4	14	331	7	0	0	358
	Total		2	14	28	624	10	0	0	678

Davidsonville Elementary School  
 ETHNIC DISTRIBUTION

09/12/08  
 13:06

STU98  
 Page 1

Grade Level	Gender	Code:	1	2	3	4	5	lank	Inv	All
Grade: 0	Females		0	0	1	46	0	0	0	47
	Males		0	1	1	43	2	0	0	47
	Total		0	1	2	89	2	0	0	94
Grade: 1	Females		0	2	2	38	1	0	0	43
	Males		0	1	2	46	0	0	0	49
	Total		0	3	4	84	1	0	0	92
Grade: 2	Females		1	4	0	48	0	0	0	53
	Males		1	2	1	56	0	0	0	60
	Total		2	6	1	104	0	0	0	113
Grade: 3	Females		0	0	0	38	1	0	0	39
	Males		0	0	1	45	1	0	0	47
	Total		0	0	1	83	2	0	0	86
Grade: 4	Females		1	0	0	66	3	0	0	70
	Males		0	0	3	52	0	0	0	55
	Total		1	0	3	118	3	0	0	125

09/12/08  
13:06

Davidsonville Elementary School  
ETHNIC DISTRIBUTION

STU98  
Page 2

Grade Level	Gender	Code:	1	2	3	4	5	lank	Inv	All
Grade: 5	Females		0	1	6	42	1	0	0	50
	Males		0	1	2	53	1	0	0	57
	Total		0	2	8	95	2	0	0	107
Total:	Females		2	7	9	278	6	0	0	302
	Males		1	5	10	295	4	0	0	315
	Total		3	12	19	573	10	0	0	617

Deale Elementary School  
ETHNIC DISTRIBUTION

Grade Level	Gender	Code:	1	2	3	4	5	lank	Inv	All
Grade: 0	Females		0	0	1	20	1	0	0	22
	Males		0	1	2	23	1	0	0	27
	Total		0	1	3	43	2	0	0	49
Grade: 1	Females		0	1	1	23	0	0	0	25
	Males		0	0	1	18	0	0	0	19
	Total		0	1	2	41	0	0	0	44
Grade: 2	Females		0	0	2	31	0	0	0	33
	Males		0	0	1	23	1	0	0	25
	Total		0	0	3	54	1	0	0	58
Grade: 3	Females		0	1	1	16	0	0	0	18
	Males		0	1	1	21	1	0	0	24
	Total		0	2	2	37	1	0	0	42
Grade: 4	Females		0	1	0	22	0	0	0	23
	Males		0	0	2	21	1	0	0	24
	Total		0	1	2	43	1	0	0	47
Grade: 5	Females		0	0	1	15	0	0	0	16
	Males		0	0	2	21	0	0	0	23
	Total		0	0	3	36	0	0	0	39

09/12/08  
13:07

Deale Elementary School  
ETHNIC DISTRIBUTION

STU98  
Page 2

Grade Level	Gender	Code:	1	2	3	4	5	lank	Inv	All
Grade: 93	Females		0	0	2	2	0	0	0	4
	Males		0	0	0	8	0	0	0	8
	Total		0	0	2	10	0	0	0	12
Total:	Females		0	3	8	129	1	0	0	141
	Males		0	2	9	135	4	0	0	150
	Total		0	5	17	264	5	0	0	291



Edgewater Elementary School  
ETHNIC DISTRIBUTION

Grade Level	Gender	Code:	1	2	3	4	5	lank	Inv	All
Grade: 0	Females		0	0	1	30	14	0	0	45
	Males		0	1	1	25	4	0	0	31
	Total		0	1	2	55	18	0	0	76
Grade: 1	Females		0	1	2	21	6	0	0	30
	Males		1	0	0	29	7	0	0	37
	Total		1	1	2	50	13	0	0	67
Grade: 2	Females		0	2	2	33	8	0	0	45
	Males		0	2	1	39	5	0	0	47
	Total		0	4	3	72	13	0	0	92
Grade: 3	Females		0	0	0	31	4	0	0	35
	Males		0	1	2	26	3	0	0	32
	Total		0	1	2	57	7	0	0	67
Grade: 4	Females		0	0	1	22	5	0	0	28
	Males		0	1	3	42	6	0	0	52
	Total		0	1	4	64	11	0	0	80

09/12/08  
13:07

Edgewater Elementary School  
ETHNIC DISTRIBUTION

Grade Level	Gender	Code:	1	2	3	4	5	lank	Inv	All
Grade: 5	Females		0	1	1	21	2	0	0	25
	Males		1	0	0	30	9	0	0	40
	Total		1	1	1	51	11	0	0	65
Total:	Females		0	4	7	158	39	0	0	208
	Males		2	5	7	191	34	0	0	239
	Total		2	9	14	349	73	0	0	447

Lothian Elementary School  
ETHNIC DISTRIBUTION

Grade Level	Gender	Code:	1	2	3	4	5	lank	Inv	All
Grade: 0	Females		0	0	1	27	3	0	0	31
	Males		0	0	11	21	3	0	0	35
	Total		0	0	12	48	6	0	0	66
Grade: 1	Females		0	0	9	23	1	0	0	33
	Males		0	1	6	39	1	0	0	47
	Total		0	1	15	62	2	0	0	80
Grade: 2	Females		0	1	12	23	1	0	0	37
	Males		0	0	4	26	1	0	0	31
	Total		0	1	16	49	2	0	0	68
Grade: 3	Females		0	0	6	42	3	0	0	51
	Males		0	0	11	41	1	0	0	53
	Total		0	0	17	83	4	0	0	104
Grade: 4	Females		1	0	4	25	1	0	0	31
	Males		0	1	7	31	1	0	0	40
	Total		1	1	11	56	2	0	0	71
Grade: 5	Females		1	1	14	27	2	0	0	45
	Males		0	0	10	22	5	0	0	37
	Total		1	1	24	49	7	0	0	82

09/12/08  
13:07

Lothian Elementary School  
ETHNIC DISTRIBUTION

STU98  
Page 2

Grade Level	Gender	Code:	1	2	3	4	5	lank	Inv	All
Grade: 92	Females		1	2	1	15	0	0	0	19
	Males		0	0	3	12	1	0	0	16
	Total		1	2	4	27	1	0	0	35
Total:	Females		3	4	47	182	11	0	0	247
	Males		0	2	52	192	13	0	0	259
	Total		3	6	99	374	24	0	0	506

Mayo Elementary School  
ETHNIC DISTRIBUTION

Grade Level	Gender	Code:	1	2	3	4	5	lank	Inv	All
Grade: 0	Females		0	0	0	26	0	0	0	26
	Males		0	1	1	23	0	0	0	25
	Total		0	1	1	49	0	0	0	51
Grade: 1	Females		0	0	0	28	1	0	0	29
	Males		0	0	1	19	0	0	0	20
	Total		0	0	1	47	1	0	0	49
Grade: 2	Females		0	0	2	21	2	0	0	25
	Males		0	0	0	27	0	0	0	27
	Total		0	0	2	48	2	0	0	52
Grade: 3	Females		1	0	2	23	2	0	0	28
	Males		0	0	2	33	0	0	0	35
	Total		1	0	4	56	2	0	0	63
Grade: 4	Females		0	0	0	22	0	0	0	22
	Males		0	1	3	30	1	0	0	35
	Total		0	1	3	52	1	0	0	57

09/12/08  
13:08

Mayo Elementary School  
ETHNIC DISTRIBUTION

STU98  
Page 2

Grade Level	Gender	Code:	1	2	3	4	5	lank	Inv	All
Grade: 5	Females		0	0	2	31	0	0	0	33
	Males		0	0	0	24	0	0	0	24
	Total		0	0	2	55	0	0	0	57
Total:	Females		1	0	6	151	5	0	0	163
	Males		0	2	7	156	1	0	0	166
	Total		1	2	13	307	6	0	0	329

Shady Side Elementary School  
ETHNIC DISTRIBUTION

09/12/08  
13:08

STU98  
Page 1

Grade Level	Gender	Code:	1	2	3	4	5	lank	Inv	All
Grade: 0	Females		1	0	6	25	0	0	0	32
	Males		1	2	1	31	0	0	0	35
	Total		2	2	7	56	0	0	0	67
Grade: 1	Females		1	0	7	22	1	0	0	31
	Males		1	1	4	37	1	0	0	44
	Total		2	1	11	59	2	0	0	75
Grade: 2	Females		0	0	7	31	0	0	0	38
	Males		0	0	6	32	0	0	0	38
	Total		0	0	13	63	0	0	0	76
Grade: 3	Females		0	1	7	25	0	0	0	33
	Males		0	0	4	39	1	0	0	44
	Total		0	1	11	64	1	0	0	77
Grade: 4	Females		0	1	1	31	0	0	0	33
	Males		0	0	1	36	2	0	0	39
	Total		0	1	2	67	2	0	0	72

09/12/08  
13:08

Shady Side Elementary School  
ETHNIC DISTRIBUTION

Grade Level	Gender	Code:	1	2	3	4	5	lank	Inv	All
Grade: 5	Females		0	0	3	39	1	0	0	43
	Males		0	1	5	39	1	0	0	46
	Total		0	1	8	78	2	0	0	89
Total:	Females		2	2	31	173	2	0	0	210
	Males		2	4	21	214	5	0	0	246
	Total		4	6	52	387	7	0	0	456



Tracey's Elementary School  
ETHNIC DISTRIBUTION

Grade Level	Gender	Code:	1	2	3	4	5	lank	Inv	All
Grade: 0	Females		0	0	3	19	0	0	0	22
	Males		0	0	3	18	0	0	0	21
	Total		0	0	6	37	0	0	0	43
Grade: 1	Females		0	0	2	17	1	0	0	20
	Males		1	0	3	19	0	0	0	23
	Total		1	0	5	36	1	0	0	43
Grade: 2	Females		0	0	2	14	0	0	0	16
	Males		0	0	4	17	0	0	0	21
	Total		0	0	6	31	0	0	0	37
Grade: 3	Females		0	1	3	19	1	0	0	24
	Males		0	1	3	14	2	0	0	20
	Total		0	2	6	33	3	0	0	44
Grade: 4	Females		1	0	4	18	0	0	0	23
	Males		1	0	1	27	0	0	0	29
	Total		2	0	5	45	0	0	0	52

09/12/08  
13:18

Tracey's Elementary School  
ETHNIC DISTRIBUTION

STU98  
Page 2

Grade Level	Gender	Code:	1	2	3	4	5	lank	Inv	All
Grade: 5	Females		1	1	2	21	0	0	0	25
	Males		0	0	4	14	0	0	0	18
	Total		1	1	6	35	0	0	0	43
Total:	Females		2	2	16	108	2	0	0	130
	Males		2	1	18	109	2	0	0	132
	Total		4	3	34	217	4	0	0	262

Central Middle School  
ETHNIC DISTRIBUTION

Grade Level	Gender	Code:	1	2	3	4	5	lank	Inv	All
Grade: 6	Females		0	3	7	146	9	0	0	165
	Males		0	2	9	160	11	0	0	182
	Total		0	5	16	306	20	0	0	347
Grade: 7	Females		0	4	9	155	9	0	0	177
	Males		1	2	2	175	7	0	0	187
	Total		1	6	11	330	16	0	0	364
Grade: 8	Females		1	6	8	173	9	0	0	197
	Males		2	4	8	169	7	0	0	190
	Total		3	10	16	342	16	0	0	387
Total:	Females		1	13	24	474	27	0	0	539
	Males		3	8	19	504	25	0	0	559
	Total		4	21	43	978	52	0	0	1098

09/12/08  
13:10

Southern Middle School  
ETHNIC DISTRIBUTION

STU98  
Page 1

Grade Level	Gender	Code:	1	2	3	4	5	lank	Inv	All
Grade: 6	Females		1	1	11	77	7	0	0	97
	Males		3	1	21	115	3	0	0	143
	Total		4	2	32	192	10	0	0	240
Grade: 7	Females		0	3	21	94	5	0	0	123
	Males		1	2	22	97	3	0	0	125
	Total		1	5	43	191	8	0	0	248
Grade: 8	Females		0	3	16	106	2	0	0	127
	Males		0	2	22	101	9	0	0	134
	Total		0	5	38	207	11	0	0	261
Total:	Females		1	7	48	277	14	0	0	347
	Males		4	5	65	313	15	0	0	402
	Total		5	12	113	590	29	0	0	749

South River High School  
ETHNIC DISTRIBUTION

Grade Level	Gender	Code:	1	2	3	4	5	lank	Inv	All
Grade: 9	Females		0	9	18	238	11	0	0	276
	Males		3	9	20	215	5	0	0	252
	Total		3	18	38	453	16	0	0	528
Grade: 10	Females		1	7	14	242	6	0	0	270
	Males		1	4	15	192	11	0	0	223
	Total		2	11	29	434	17	0	0	493
Grade: 11	Females		0	6	16	201	8	0	0	231
	Males		1	5	18	238	5	0	0	267
	Total		1	11	34	439	13	0	0	498
Grade: 12	Females		0	5	8	206	5	0	0	224
	Males		0	3	10	194	5	0	0	212
	Total		0	8	18	400	10	0	0	436
Total:	Females		1	27	56	887	30	0	0	1001
	Males		5	21	63	839	26	0	0	954
	Total		6	48	119	1726	56	0	0	1955

Southern High School  
ETHNIC DISTRIBUTION

Grade Level	Gender	Code:	1	2	3	4	5	lank	Inv	All
Grade: 9	Females		0	1	39	116	5	0	0	161
	Males		1	1	20	156	6	0	0	184
	Total		1	2	59	272	11	0	0	345
Grade: 10	Females		0	4	21	104	5	0	0	134
	Males		1	0	29	121	1	0	0	152
	Total		1	4	50	225	6	0	0	286
Grade: 11	Females		1	0	13	117	4	0	0	135
	Males		0	1	13	119	1	0	0	134
	Total		1	1	26	236	5	0	0	269
Grade: 12	Females		0	2	14	111	3	0	0	130
	Males		1	2	20	110	1	0	0	134
	Total		1	4	34	221	4	0	0	264
Total:	Females		1	7	87	448	17	0	0	560
	Males		3	4	82	506	9	0	0	604
	Total		4	11	169	954	26	0	0	1164

**Anne Arundel County Public Schools  
Superintendent's Recommended  
FY 2010 Capital Budget  
September 17, 2008**

FY 10 Priority	FY 09 Priority	Requirement	Superintendent's Recommendation	Cumulative Value
1	1	Health & Safety '10	500,000	500,000
2	2	Security Related Upgrades '10	1,000,000	1,500,000
3	3	Open Space Classroom Enclosures '10	5,000,000	6,500,000
4	4	All Day K and Pre-K Additions	10,000,000	16,500,000
5	5	Building Systems Renovations ' 11 (Systemics)	20,000,000	36,500,000
6	6	Maintenance Backlog Reduction '10	7,000,000	43,500,000
7	7	Roof Replacement '10	2,000,000	45,500,000
8	8	Textbooks '10	8,750,000	54,250,000
9	9	Relocatable Classrooms '10	1,500,000	55,750,000
10	10	Asbestos Abatement '10	1,000,000	56,750,000
11	11	Barrier Free Access '10	500,000	57,250,000
12	12	School Bus Replacement '10	650,000	57,900,000
13	13	Science Lab Modernizations	4,000,000	61,900,000
14	18	Severna Park MS - Revitalization	12,393,000	74,293,000
15	19	Southgate ES - Revitalization	3,999,000	78,292,000
16	20	Overlook ES - Revitalization	10,983,000	89,275,000
17	21	Pershing Hill ES - Replacement	15,953,000	105,228,000
18	22	Belle Grove ES - Construction	10,219,000	115,447,000
19	23	Phoenix Annapolis - Design/Construction	6,975,000	122,422,000
20	24	Annapolis ES - Design/Construction	8,014,000	130,436,000
21	25	Germantown ES - Design/Construction	10,644,000	141,080,000
22	26	Folger McKinsey ES - Design/Construction	11,678,000	152,758,000
23	27	Point Pleasant ES - Design/Construction	12,069,000	164,827,000
24	28	Northeast HS - Revitalization	32,743,000	197,570,000
25		Lothian ES - Feasibility Study/Design	1,085,000	198,655,000
26		Crofton ES - Feasibility Study/Design	1,068,000	199,723,000
27		Mills-Parole ES - Feasibility Study/Design	1,054,000	200,777,000
28		Rolling Knolls ES - Feasibility Study/Design	893,000	201,670,000
29		Benfield ES - Feasibility Study/Design	877,000	202,547,000
30		West Annapolis ES - Feasibility Study/Design	688,000	203,235,000
31		Gym Additions	6,000,000	209,235,000
32	29	Health Room Modifications '10	300,000	209,535,000
33	30	School Furniture '10	500,000	210,035,000
34	31	Upgrade Various Schools '10	400,000	210,435,000
35	32	Vehicle Replacement '10	350,000	210,785,000
36	33	Aging Schools '10	965,000	211,750,000
37	34	TIMS Electrical Upgrade '10	300,000	212,050,000
38	35	Auditorium Seating Replacement '10	600,000	212,650,000
39	36	Playground Equipment Improvements '10	300,000	212,950,000
40	37	Athletic Stadium Improvements '10	2,000,000	214,950,000
41	38	Qualified Zone Academy Bonds (QZAB) '10	420,000	215,370,000
<b>Total Project - Board of Education</b>			<b>215,370,000</b>	<b>215,370,000</b>
<b><u>School Off-Site Budget Category</u></b>				
1	1	Driveway and Parking Lot Additions	750,000	750,000
2	2	Construction of Sidewalks and Walkways	250,000	250,000
<b>Total Project Off-Site</b>			<b>1,000,000</b>	<b>1,000,000</b>
			<b>216,370,000</b>	<b>216,370,000</b>

Recurring Projects	Project Total	Prior Years	FY 10	FY 11	FY 12	FY 13	FY 14	FY 15
Health & Safety '10	3,000,000		500,000	500,000	500,000	500,000	500,000	500,000
Security Related Upgrades '10	6,000,000		1,000,000	1,000,000	1,000,000	1,000,000	1,000,000	1,000,000
Building Systems Ren.' 11 (Systemics)	120,000,000		20,000,000	20,000,000	20,000,000	20,000,000	20,000,000	20,000,000
Maintenance Backlog Reduction '10	42,000,000		7,000,000	7,000,000	7,000,000	7,000,000	7,000,000	7,000,000
Roof Replacement '10	12,000,000		2,000,000	2,000,000	2,000,000	2,000,000	2,000,000	2,000,000
Textbooks '10	78,750,000		8,750,000	14,000,000	14,000,000	14,000,000	14,000,000	14,000,000
Relocatable Classrooms '10	9,000,000		1,500,000	1,500,000	1,500,000	1,500,000	1,500,000	1,500,000
Asbestos Abatement '10	6,000,000		1,000,000	1,000,000	1,000,000	1,000,000	1,000,000	1,000,000
Barrier Free Access '10	3,000,000		500,000	500,000	500,000	500,000	500,000	500,000
Replacement Buses '10	3,900,000		650,000	650,000	650,000	650,000	650,000	650,000
Health Room Modifications '10	1,800,000		300,000	300,000	300,000	300,000	300,000	300,000
School Furniture '10	3,000,000		500,000	500,000	500,000	500,000	500,000	500,000
Upgrade Various Schools '10	2,100,000		400,000	400,000	400,000	400,000	400,000	400,000
Vehicle Replacement '10	350,000		350,000	350,000	350,000	350,000	350,000	350,000
Aging Schools '10	5,790,000		965,000	965,000	965,000	965,000	965,000	965,000
TIMS Electrical Upgrade '10	1,800,000		300,000	300,000	300,000	300,000	300,000	300,000
Auditorium Seating Replacement '10	3,600,000		600,000	600,000	600,000	600,000	600,000	600,000
Playground Equipment Improvements '10	1,800,000		300,000	300,000	300,000	300,000	300,000	300,000
Athletic Stadiums Improvements '10	12,000,000		2,000,000	2,000,000	2,000,000	2,000,000	2,000,000	2,000,000
Qualified Zone Academy Bonds (QZAB) '10	2,520,000		420,000	420,000	420,000	420,000	420,000	420,000
<b>Subtotal</b>	<b>304,140,000</b>		<b>49,035,000</b>	<b>54,285,000</b>	<b>54,285,000</b>	<b>54,285,000</b>	<b>54,285,000</b>	<b>54,285,000</b>
<b>Major Capital Projects</b>	<b>Project Total</b>	<b>Prior Years</b>	<b>FY 10</b>	<b>FY 11</b>	<b>FY 12</b>	<b>FY 13</b>	<b>FY 14</b>	<b>FY 15</b>
N/A	33,181,573	3,181,573	5,000,000	5,000,000	5,000,000	5,000,000	5,000,000	5,000,000
N/A	60,000,000		10,000,000	10,000,000	10,000,000	10,000,000	10,000,000	10,000,000
N/A	12,000,000		4,000,000	4,000,000	4,000,000			
Existing	56,192,000	43,799,000	12,393,000	12,393,000				
Existing	29,566,000	25,567,000	3,999,000	3,999,000				
Existing	23,231,000	9,078,000	10,963,000	3,170,000				
1	34,569,000	13,743,000	15,953,000	4,673,000				
1	20,320,000	7,260,000	10,219,000	2,841,000				
1	17,819,937	107,937	6,975,000	8,212,000	2,525,000			
1	20,403,208	131,208	8,014,000	9,405,000	2,853,000			
1	28,877,000	991,000	10,644,000	13,316,000	3,926,000			
1	31,560,000	1,069,000	11,678,000	14,556,000	4,257,000			
1	32,528,000	1,069,000	12,069,000	15,409,000	4,354,000			
1	96,167,933	7,050,933	32,743,000	44,509,000	11,865,000			
1	34,630,000		1,085,000	12,966,000	15,995,000	4,584,000		
1	34,165,000		1,068,000	12,762,000	15,776,000	4,559,000		
1	33,711,000		1,054,000	12,583,000	15,566,000	4,508,000		
2	28,547,000		893,000	10,607,000	13,180,000	3,667,000		
2	28,003,000		877,000	10,406,000	12,929,000	3,791,000		
1	24,000,000		688,000	6,000,000	10,115,000	3,030,000		
N/A	124,071,000		6,000,000	6,000,000	6,000,000	6,000,000		
2	40,777,000		3,827,000	47,473,000	15,283,000	18,830,000	5,423,000	
2	40,841,000		1,276,000	1,276,000	1,276,000	1,276,000	1,276,000	
2	25,473,000		801,000	801,000	801,000	801,000	801,000	
2	34,476,000		1,079,000	1,079,000	1,079,000	1,079,000	1,079,000	
2	33,583,000		995,000	995,000	995,000	995,000	995,000	
2	38,365,000							
2	35,960,000							
2	32,997,000							
3	196,858,000							
3	43,842,000							
3	35,199,000							
2	75,975,000							
2	62,477,000							
3	36,816,000							
3	41,075,000							
<b>Subtotal</b>	<b>832,954,078</b>		<b>166,335,000</b>	<b>211,920,000</b>	<b>191,239,000</b>	<b>171,815,000</b>	<b>175,723,000</b>	<b>269,849,000</b>
<b>Total - Board of Education</b>	<b>1,136,994,078</b>		<b>215,370,000</b>	<b>266,205,000</b>	<b>245,524,000</b>	<b>228,100,000</b>	<b>230,008,000</b>	<b>324,134,000</b>
<b>Project</b>	<b>Project Total</b>	<b>Prior Years</b>	<b>FY 10</b>	<b>FY 11</b>	<b>FY 12</b>	<b>FY 13</b>	<b>FY 14</b>	<b>FY 15</b>
Driveaway and Parking Lot Additions	750,000		750,000	750,000	750,000	750,000	750,000	750,000
Construction of Sidewalks/Walkways	1,500,000		250,000	250,000	250,000	250,000	250,000	250,000
Total School Off-Site Project Class	6,000,000		1,000,000	1,000,000	1,000,000	1,000,000	1,000,000	1,000,000
<b>Total All Categories</b>	<b>1,142,994,078</b>		<b>216,370,000</b>	<b>267,205,000</b>	<b>248,524,000</b>	<b>227,100,000</b>	<b>231,008,000</b>	<b>325,134,000</b>



Anne Arundel County Public Schools  
 Superintendent's Recommended  
 FY 2010 State Funded Capital Improvement Program

MAJOR CONSTRUCTION PROGRAMS

Project	Estimated Total Cost	FY10	FY 11	FY 12	FY 13	FY 14	FY 15
Severna Park MS - Revitalization	56,192,000	201,000					
Southgate ES - Revitalization	29,566,000	4,270,000					
Pershing Hill ES - Replacement	34,369,000	3,164,000	4,745,000				
Severna Park ES - HVAC Replacement Systemic	1,500,000	633,000					
Central ES - Open Space Classroom Enclosure	2,078,000	520,000					
Central ES - Kindergarten Addition	3,701,000	LP/ 1,217,000					
Crofton Woods ES - Open Space Classroom Enclosure	2,078,000	520,000					
Crofton Woods ES - Kindergarten Addition	3,130,000	LP/ 1,013,000					
Hilltop ES - Open Space Classroom Enclosure	2,078,000	520,000					
Hilltop ES - Kindergarten Addition	3,130,000	LP/ 1,013,000					
Bodkin ES - Open Space Classroom Enclosure	2,078,000	520,000					
Oak Hill ES - Open Space Classroom Enclosure	2,078,000	520,000					
Broadneck ES - Kindergarten Addition	3,701,000	LP/ 1,217,000					
Windsor Farms ES - Kindergarten Addition	3,701,000	LP/ 1,217,000					
Chesapeake HS - Roof Replacement Systemic	3,900,000	1,665,000					
Overlook ES - Revitalization	23,231,000	LP/ 1,684,000	2,526,000				
Belle Grove ES - Construction	20,320,000	LP/ 983,000	983,000	1,475,000			
Northeast HS - Revitalization	96,167,933	LP/ 7,473,000	11,210,000				
Glen Burnie HS - HVAC Replacement Systemic	5,600,000	2,361,000					
MacArthur MS - HVAC Replacement Systemic	9,000,000	3,796,000					
Marley Glen ES - TIMS Electric	150,000	65,000					
Ruth Eason ES - TIMS Electric	150,000	65,000					
Phoenix Annapolis - Design/Construction	17,819,937	LP/ 963,000	1,445,000				
Annapolis ES - Design/Construction	20,403,208	LP/ 2,001,000	3,001,000				
Germantown ES - Design/Construction	28,877,000	LP/ 2,826,000	4,238,000				
Folger McKinsey ES - Design/Construction	31,560,000	LP/ 3,460,000	5,189,000				
Point Pleasant ES - Design/Construction	32,528,000	LP/ 3,086,000	4,630,000				
Mid City ES - Gym Additions	2,883,000	LP/ 961,000					
Waugh Chapel ES - Gym Additions	2,883,000	LP/ 961,000					
<b>Total</b>	<b>444,853,078</b>	<b>48,895,000</b>	<b>38,459,000</b>				

FUTURE REQUESTS

Project	Estimated Total Cost	FY10	FY 11	FY 12	FY 13	FY 14	FY 15
Lothian ES - Feasibility Study/Design	34,630,000		LP/ 1,826,000	2,739,000			
Crofton ES - Feasibility Study/Design	34,165,000		LP/ 3,505,000	5,258,000			
Mills-Paroie ES - Feasibility Study/Design	33,711,000		LP/ 3,893,000	5,839,000			
Rolling Knolls ES - Feasibility Study/Design	28,547,000		LP/ 3,303,000	4,954,000			
Benfield ES - Feasibility Study/Design	28,003,000		LP/ 2,058,000	3,087,000			
West Annapolis ES - Feasibility Study/Design	21,916,000		LP/ 2,516,000	3,774,000			
FY 11 Various Systemic Projects	20,000,000		9,800,000				
FY 11 Open Space Clsrm Enclosure - Various Schools	5,000,000		2,450,000				
FY 11 All Day K/PreK - Various Schools	10,000,000		LP/ 3,500,000				
FY 11 Gym Additions - Various Schools	6,000,000		LP/ 2,100,000				
FY 11 Various TIMS Electrical Projects	300,000		147,000				
Severna Park HS - Feasibility Study/Design	124,071,000			LP/ 13,660,000	20,490,000		
Manor View ES - Feasibility Study/Design	40,777,000			LP/ 4,283,000	6,425,000		
HighPoint ES - Feasibility Study/Design	40,841,000			LP/ 4,098,000	6,148,000		
George Cromwell ES - Feasibility Study/Design	25,473,000			LP/ 1,133,000	1,699,000		
Jessup ES - Feasibility Study/Design	34,476,000			LP/ 1,315,000	1,972,000		
Arnold ES - Feasibility Study/Design	31,737,000			LP/ 3,298,000	4,948,000		
FY 12 Various Systemic Projects	20,000,000			9,800,000			
FY 12 Open Space Clsrm Enclosure - Various Schools	5,000,000			2,450,000			
FY 12 All Day K/PreK - Various Schools	10,000,000			LP/ 3,500,000			
FY 12 Gym Additions - Various Schools	6,000,000			LP/ 2,100,000			
FY 12 Various TIMS Electrical Projects	300,000			147,000			
Shady Side ES - Feasibility Study/Design	33,583,000				LP/ 3,139,000	4,708,000	
Richard H. Lee ES - Feasibility Study/Design	38,365,000				LP/ 2,812,000	4,219,000	
Hillsmere ES - Feasibility Study/Design	35,560,000				LP/ 3,632,000	5,449,000	
Quarterfield ES - Feasibility Study/Design	32,597,000				LP/ 2,692,000	4,039,000	
FY 13 Various Systemic Projects	20,000,000				9,800,000		
FY 13 Open Space Clsrm Enclosure - Various Schools	5,000,000				2,450,000		
FY 13 All Day K/PreK - Various Schools	10,000,000				LP/ 3,500,000		
FY 13 Gym Additions - Various Schools	6,000,000				LP/ 2,100,000		
FY 13 Various TIMS Electrical Projects	300,000				147,000		
Old Mill HS - Feasibility Study/Design	196,858,000					LP/ 15,675,000	23,513,000
Rippling Woods ES - Feasibility Study/Design	43,842,000					LP/ 4,280,000	6,420,000
Edgewater ES - Feasibility Study/Design	35,199,000					LP/ 3,299,000	4,949,000
Old Mill MS North - Feasibility Study/Design	75,975,000					LP/ 6,275,000	9,412,000
Old Mill MS South - Feasibility Study/Design	75,975,000					LP/ 4,049,000	6,073,000
FY 14 Various Systemic Projects	20,000,000					9,800,000	
FY 14 Open Space Clsrm Enclosure - Various Schools	5,000,000					2,450,000	
FY 14 All Day K/PreK - Various Schools	10,000,000					LP/ 3,500,000	
FY 14 Gym Additions - Various Schools	6,000,000					LP/ 2,100,000	
FY 14 Various TIMS Electrical Projects	300,000					147,000	
Bates MS - Feasibility Study/Design	82,477,000						LP/ 794,000
Tyler Heights ES - Feasibility Study/Design	36,816,000						LP/ 3,298,000
Brock Bridge ES - Feasibility Study/Design	41,075,000						LP/ 3,310,000
FY 15 Various Systemic Projects	20,000,000						9,800,000
FY 15 Open Space Clsrm Enclosure - Various Schools	5,000,000						2,450,000
FY 15 All Day K/PreK - Various Schools	10,000,000						LP/ 3,500,000
FY 15 Gym Additions - Various Schools	6,000,000						LP/ 2,100,000
FY 15 Various TIMS Electrical Projects	300,000						147,000
<b>Total</b>	<b>1,393,169,000</b>		<b>35,098,000</b>	<b>71,435,000</b>	<b>71,954,000</b>	<b>69,990,000</b>	<b>75,766,000</b>
<b>Total All Categories</b>	<b>1,838,022,078</b>	<b>48,895,000</b>	<b>73,557,000</b>	<b>71,435,000</b>	<b>71,954,000</b>	<b>69,990,000</b>	<b>75,766,000</b>