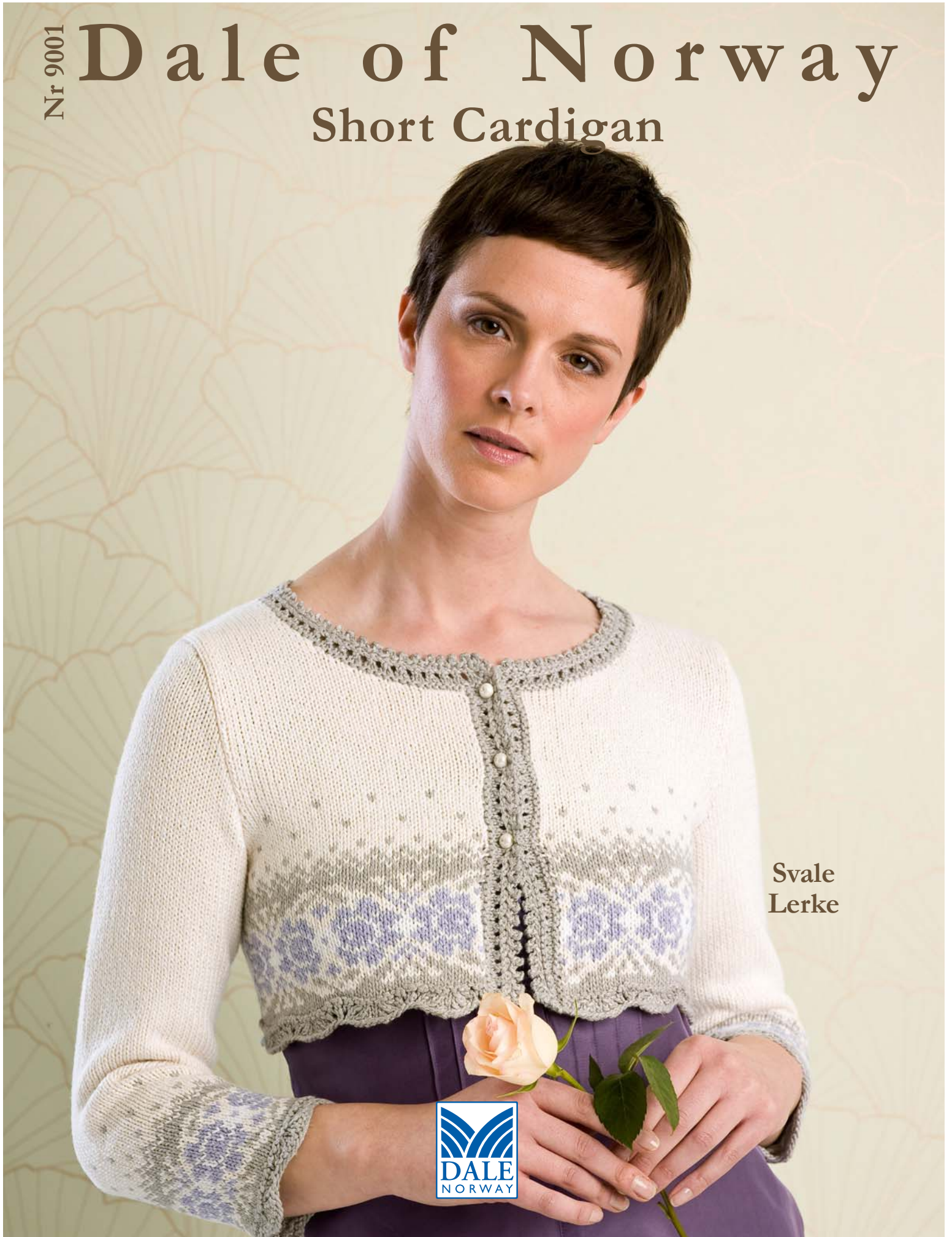


Nr 9001

Dale of Norway

Short Cardigan



Svale
Lerke



9001 Short Cardigan

- Designer: Ane Sæthre

MATERIALS: Svale or Lerke

SIZES: XS/S S/M M/L

SVALE CARIDGAN:

Color 1:	100	100	150 gr	birch 9831
Color 2:	250	300	350 gr	natural 0020
Color 3:	50	50	50 gr	lilac 5403
Color 4:	50	50	50 gr	white 0010

LERKE CARDIGAN:

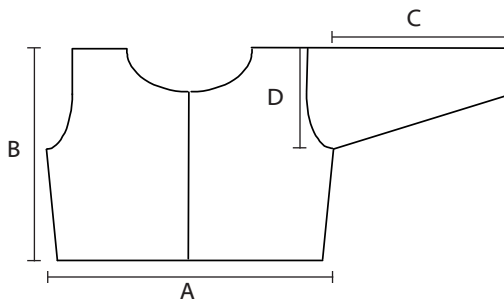
Color 1:	100	150	150 gr	black 0090
Color 2:	250	250	300 gr	clay 3461
Color 3:	50	50	50 gr	pink pearl 3811
Color 4:	50	50	50 gr	slate 5752

SUGGESTED NEEDLE SIZES: Cir and dp needles in sizes 3 and 3.5mm, crochet hook in size 2.5mm and st markers. **Note:** US and metric needle sizes often do not match exactly and size equivalencies have changed. The original version of this pattern was written to use metric size needles; if in doubt as to whether a given US needle size is the same as a metric size, use the metric size needle. As always, please take the time to check your gauge carefully and change needle sizes as needed to obtain the correct gauge.

GAUGE: 23 sts and 28 rows over St st using larger needles = 4"(10cm) x 4"(10cm).

ACCESSORIES: 3 small buttons and approx 164yds(150m) silver metallic thread.

FINISHED MEASUREMENTS:



A = Chest Width: 30 ³/₄"(34 ⁵/₈" , 38 ⁵/₈")/78cm(88cm,98cm)

B = Body Length: 12 ⁵/₈"(13 ³/₈" , 14 ¹/₈")/32cm(34cm,36cm)

C = Sleeve Length to Underarm: 13 ³/₄"(14 ¹/₂" , 15 ³/₈")/35cm(37cm,39cm)

D = Armhole Depth: 7 ¹/₈"(7 ⁷/₈" , 8 ⁵/₈")/18cm(20cm,22cm)

Watch gauge carefully to obtain the correct finished measurements!

BODY: With larger cir needle and 1 strand each of Color 1 and metallic thread held tog, C O 169/193/217 sts. Working back and forth, beg with a WS row and p 1 row. Work Pattern A, then cut metallic thread and cont with Color 1 only. Place side markers 42/48/54 sts from beg and end of row. Work first 24 rows of Pattern B, making sure to add metallic thread when working with Color 3. Inc 1 st on each side of both markers on next row, then ever fourth row once more, leaving 2 sts between inc sts and working inc sts into pattern (177/201/225 sts). Work through row 39 of pattern without further inc.

Next row, work first 40/46/52 sts, C OFF the next 7 sts for armhole, work next 83/95/107 sts, C OFF the next 7 sts for armhole, then work to end of row. Cont working back and fronts separately.

BACK & NECK OPENING: Working back and forth, complete pattern, then beg St st with Color 2. AT THE SAME TIME, C OFF 3 sts at the beg of next 2 rows, 2 sts at the beg of next 2/4/4 rows, then dec 1 st at the beg and end of every other row 2/2/4 times (69/77/85 sts). Work without shaping until armhole measures 5 ⁷/₈"(6 ³/₄" , 7 ¹/₂")/15cm(17cm,19cm). Next row, work first 19/21/23 sts, C OFF the next 31/35/39 sts for neck opening, then work to end of row. Working each side of back separately, cont St st and C OFF every other row at neck edge, 2 sts twice, then 1 st once (14/16/18 sts). Work without further shaping until armhole measures 7 ¹/₈"(7 ⁷/₈" , 8 ⁵/₈")/18cm(20cm, 22cm), then C OFF. Complete other side of back to match, placing neck shaping on opposite side.

LEFT FRONT & NECK OPENING: Working back and forth, complete pattern, then beg St st with Color 2. AT THE SAME TIME, C OFF at the beg of every RS row, 3 sts once, 2 sts 1/2/2 time(s), dec 1 st at the beg of every other row 2/2/4 times (33/37/41 sts). Work without dec until armhole measures 3 ¹/₈"(3 ¹/₂" , 4")/8cm(9cm,10cm), ending with a RS row. C OFF at the beg of every WS row 6 sts once, 4 sts 0/1/1 time, 3 sts 2/1/2 time(s), 2 sts twice, then 1 st 3/4/3 times (14/16/18 sts). Work without further shaping until armhole measures 7 ¹/₈"(7 ⁷/₈" , 8 ⁵/₈")/18cm(20cm,22cm), then C OFF. Complete right front to match, placing armhole shaping at beg of WS rows and neck shaping at beg of RS rows.

SLEEVES: With larger dp needles and 1 strand each of Color 1 and metallic thread held tog, C O 60 sts. Join and, working in the rnd, mark beg of rnd and k 1 rnd. Work Pattern A, then cut metallic thread and cont working with Color 1 only. Work Pattern B, making sure to add metallic thread when working with Color 3, then beg St st with Color 2. AT THE SAME TIME, inc 1 st at the beg and end of every twenty-fourth/twelfth/ninth rnd 3/7/10 times, leaving 2 sts between inc sts and working inc sts into pattern (66/74/80 sts). Cont without further inc until sleeve measures 13 ³/₄"(14 ¹/₂" , 15 ³/₈")/35cm (37cm,39cm) from bottom edge, ending last rnd 4 sts before end of rnd.

SLEEVE CAP: C OFF the next 7 sts for underarm, then work to end of rnd (59/67/73 sts). Working back and forth, cont St st and C OFF 3 sts at the beg of first 2/2/4 rows, then 2 sts at the beg of next 4/4/2 rows. Dec 1 st at the beg and end of every other row 11/13/13 times. C OFF 2 sts at the beg of next 4 rows, then C OFF rem 15/19/23 sts. Make second sleeve to match.

FINISHING: Lay body and sleeves out to finished measurements and steam lightly. Neatly sew fronts and back tog at shoulders.

FRONT PLACKETS: With smaller cir needle, 1 strand each of Color 1 and metallic thread held tog, and with RS facing, pick up 11 sts per 2"(5cm) along left front opening edge using a crochet hook ¹/₂-metric size smaller than needles to pick up an odd number of sts k-wise. Working back and forth, beg with a WS row and k 1 row. Work 2 rows of St st. Work 1 Eyelet row (* k2tog, yo; rep from * to last st, end k 1 st). C OFF neatly p-wise. Work placket along right front opening edge to match.

NECKBAND: With smaller cir needle and 1 strand each of Color 1 and metallic thread held tog, and with RS facing, pick up sts along neck

edge and ends of plackets in same manner as plackets. Working back and forth, beg with a WS row and work neckband same as plackets. C OFF loosely p-wise.

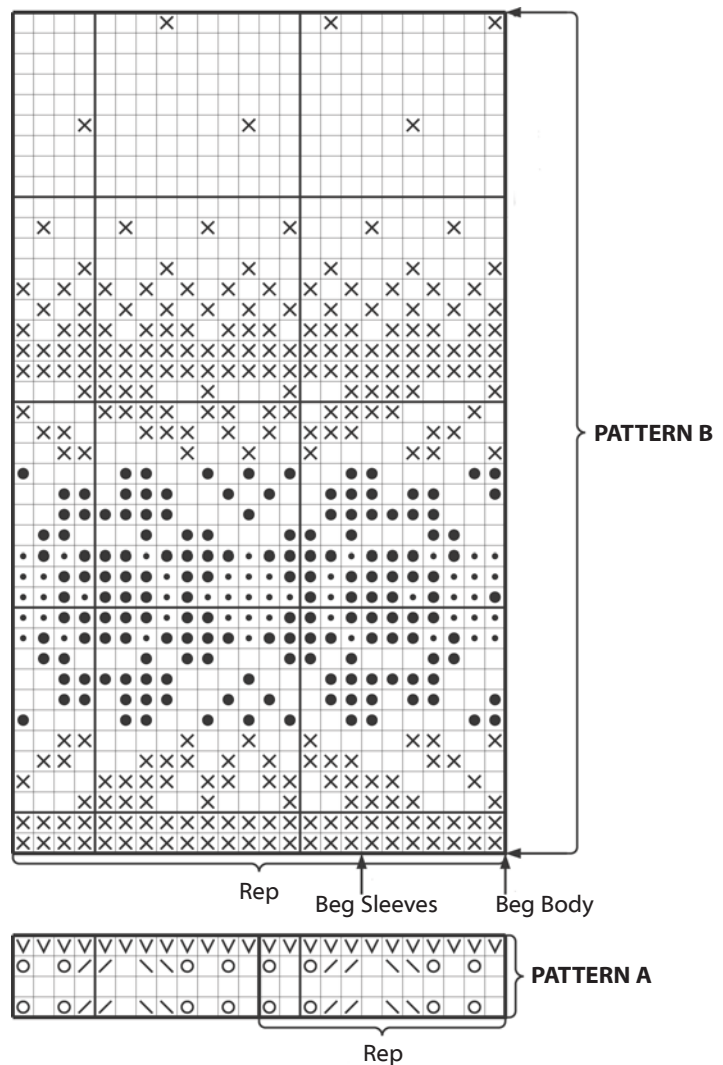
EDGING: With crochet hook and 1 strand each of Color 1 and metallic thread held tog, attach yarn with a slip st in lower right front placket. * Ch 3, work 1 slip st in third ch from hook, skip 1 st along edge, work 1 slip st in next st; rep from * along right placket, neck edge

and left placket to bottom edge. Fasten off. Pin sleeves into armholes, placing centers of sleeves at shoulder seams, then neatly sew sleeves to body. Securely sew buttons to left front placket, placing buttons as shown in photo; use eyelets as buttonholes.

- = k on RS, p on WS
- = yo
- ▤ = k2tog
- ▥ = ssk

- ▽ = p on RS, k on WS

- ⊗ = Color 1 = birch 9831/black 0090
- = Color 2 = natural 0020/clay 3461
- = Color 3 = lilac 5403/pink pearl 3811
+ metallic thread held tog
- ◻ = Color 4 = white 0010/slate 5752





ABBREVIATIONS

approx = approximately	inc = increas(e)(ing)	RS = right side(s)
beg = begin(ning)	k = knit	sk2p = slip 1 stitch knitwise, knit 2 stitches together, pass slip stitch over
CC = contrast color	k-wise = knitwise, as if to knit	ssk = slip (1 stitch knitwise) twice, insert left needle through the front of both loops and knit both stitches together
ch = chain	k2tog = knit 2 stitches together	st(s) = stitch(es)
C O = cast on	m = meter(s)	St st = stockinette stitch
C OFF = cast off	MC = main color	tbl = through the back of the loop(s)
cir = circular	mm = millimeter(s)	tog = together
cm = centimeter(s)	p = purl	WS = wrong side(s)
cn = cable needle	p-wise = purlwise, as if to purl	yd(s) = yard(s)
cont = continu(e)(ing)	psso = pass slipped stitch(es) over	yo = yarn over needle to make 1 stitch
dec = decreas(e)(ing)	p2tog = purl 2 stitches together	
dp = double pointed	rem = remain(ing)(der)	
g st = garter stitch	rep = repeat(s)(ing)	
gr = gram(s)	rnd(s) = round(s)	

LERKE

52% Merino Wool/48% Cotton DK Weight Yarn. *Care Instructions:* Machine wash (delicate cycle) or hand wash in cold water using mild/neutral detergent. Dry flat; do not put in dryer. May be dry cleaned.

SVALE

50% Cotton/40% Viscose/10% Silk DK Weight Yarn. *Care Instructions:* Machine wash (delicate cycle) or hand wash in cold water using mild/neutral detergent. Dry flat; do not put in dryer. May be dry cleaned.



Do not
bleach



Gentle
cycle spin



Steam lightly with
steam iron, if needed



Dry Clean with perchlorethylene
using normal methods

The patterns in this leaflet have been developed and tested by our design division. Every effort has been made to make the knitting directions in this leaflet as accurate as possible. However, we cannot be responsible for variations due to individual knitters, human error or typographical mistakes.

Copyright 2009, Dale of Norway, Inc. First edition. All rights reserved. No portion of this leaflet may be copied, leased, resold or otherwise distributed without the written permission of Dale of Norway, Inc. For further information write: Dale of Norway, 4750 Shelburne Road., Suite 20, Shelburne, VT 05482.