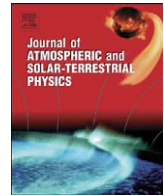




Contents lists available at ScienceDirect

## Journal of Atmospheric and Solar-Terrestrial Physics

journal homepage: [www.elsevier.com/locate/jastp](http://www.elsevier.com/locate/jastp)

# Empirical analysis of the solar contribution to global mean air surface temperature change

Nicola Scafetta

Department of Physics, Duke University, Durham, NC 27708, USA

## ARTICLE INFO

## Article history:

Received 4 March 2009

Received in revised form

16 July 2009

Accepted 23 July 2009

## Keywords:

Solar variability

Climate change

Solar-terrestrial link

## ABSTRACT

The solar contribution to global mean air surface temperature change is analyzed by using an empirical bi-scale climate model characterized by both fast and slow characteristic time responses to solar forcing:  $\tau_1 = 0.4 \pm 0.1$  yr and  $\tau_2 = 8 \pm 2$  yr or  $\tau_2 = 12 \pm 3$  yr. Since 1980 the solar contribution to climate change is uncertain because of the severe uncertainty of the total solar irradiance satellite composites. The sun may have caused from a slight cooling, if PMOD TSI composite is used, to a significant warming (up to 65% of the total observed warming) if ACRIM, or other TSI composites are used. The model is calibrated only on the empirical 11-year solar cycle signature on the instrumental global surface temperature since 1980. The model reconstructs the major temperature patterns covering 400 years of solar induced temperature changes, as shown in recent paleoclimate global temperature records.

© 2009 Elsevier Ltd. All rights reserved.

## 1. Introduction

Estimating the solar contribution to global mean air surface temperature change is fundamental for evaluating the anthropogenic contribution to climate change. This is regarded as one of the most important issues of our time. While some theoretical climate model studies (Hegerl et al., 2007; Hansen et al., 2007; IPCC, 2007) indicate that the solar variability has little effect on climate (these studies estimate that less than 10% of the global warming observed since 1900 is due to the sun), several empirical studies suggest that large climatic variations are well synchronized with solar variations and, therefore, climate is quite sensitive to solar changes (Eddy, 1976; Hoyt and Schatten, 1997; White et al., 1997; van Loon and Labitzke, 2000; Douglass and Clader, 2002; Kirkby, 2007; Scafetta and West, 2005, 2006a, 2006b, 2007, 2008; Shaviv, 2008; Eichler et al., 2009; Soon, 2009; Svensmark and Friis-Christensen, 2007).

Theoretical studies rely on climate models. Two alternative approaches are commonly used: energy balance models (EBM) (for example: Crowley et al., 2000; Foukal et al., 2004) and general circulation models (GCM) (for example, Hansen et al., 2007). These models are based on the idea that climate is forced by solar variations, volcano activity, aerosols and several greenhouse gases ( $\text{CO}_2$ ,  $\text{CH}_4$ , etc.). These forcings are theoretically evaluated and used as inputs of the models. The climate sensitivities to the forcing are estimated according to the known physics. This known physics is implemented in the models. The models contain a certain number of climate mechanisms such as water vapor

feedback, cloud formation, energy transfer, etc. The major problem with this approach is that the physics implemented within the models may be severely incomplete. Specifically, some key variables such as the climate sensitivity to  $\text{CO}_2$  changes are severely uncertain.

For example, according to the IPCC (2007) a doubling of  $\text{CO}_2$  may induce a temperature increase from 1.5 to 4.5 K, and more. This large uncertainty is mostly due to the current poor understanding and modeling of water vapor and cloud formation feedbacks which can have large effects on climate (Kirkby, 2007; Shaviv, 2008). Indeed, significant discrepancies between climate model predictions and data are observed (Douglass et al., 2007; Lean and Rind, 2008), and several climate mechanisms are still poorly understood, as reported by numerous scientific papers (Idso and Singer, 2009).

An alternative approach is based on empirical multilinear regression models. It is assumed that not all physics is known or implemented in the models. The forcings are used as inputs of EBMs whose outputs are not the actual temperature signatures generated by the various forcings but waveform functions that are assumed to be proportional to such signatures. The temperature is supposed to be a linear superposition of these rescaled output waveforms and linear amplification coefficients are evaluated by means of a multilinear regression analysis of a given temperature record. Thus, it is assumed that

$$\Delta T(t) = \sum_F \alpha_F S_F(t) + N(t), \quad (1)$$

where the regression coefficients,  $\alpha_F$ , are the linear amplification coefficient associated to a given forcing  $F$ ;  $S_F(t)$  is the output

E-mail address: ns2002@duke.edu

waveform generated by the chosen EBM forced with a given forcing  $F(t)$ ; and  $N(t)$  is the residual signal that is interpreted as natural climate variability. The above methodology has two major variants according to the particular EBM used to generate the waveforms.

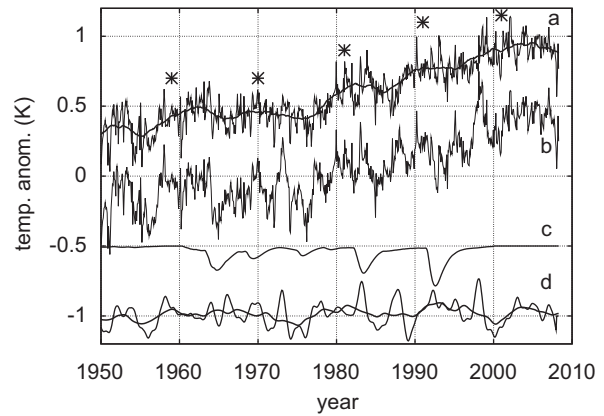
Some authors (North et al., 2004; Hegerl et al., 2006, 2007) use typical EBMs. The adoption of EBMs is particularly useful if the interest focuses on local temperature records, but becomes less useful if the interest is in the global average temperature. In fact, when the EBM outputs need to be averaged on the entire globe an EBM does not perform too much differently from a simple low pass RC-like filter with appropriate relaxation time responses. The relaxation time response of a thermodynamic system is related to the heat capacity of the system itself. For example, I found that the EBM used by Crowley et al. (2000), where the output is averaged on the entire globe, is approximately simulated with a low-pass RC-like filter with characteristic time  $\tau = 10$  yr, as deduced from the data published with Crowley's paper. In fact, some other authors (for example, Lockwood, 2008) use low-pass RC-like filters with a specific characteristic time response for each forcing.

On the contrary, other authors (Douglass and Clader, 2002; Gleisner and Thejll, 2003; Lean and Rind, 2008) do not use traditional EBMs. These authors just assume that the output waveform functions coincide with the corresponding forcing functions with some time-lag shifts. Thus, these authors use Eq. (1) with  $S_F(t) = F(t - \tau_F)$ .

The results of these multilinear regression model studies are quite interesting, also because they differ significantly from each other. Hegerl et al. (2007) found a large variability of the climate sensitivity to the total solar irradiance (TSI) changes depending on the paleoclimate temperature records that they used. In some cases these authors even found *negative* values of the climate sensitivity to TSI changes which is evidently not physical because it would imply that global climate cools when TSI increases and warms when TSI decreases. Probably, the significant uncertainty present in the paleoclimate temperature reconstructions and in the forcing functions is responsible for these ambiguous results. These results show that the multilinear regression analysis methodology is inefficient when applied to long and uncertain records.

Lockwood (2008) applied a nonlinear multivariate fit with several parameters on a three decades surface temperature record and found that the surface climate signature associated to the 11-year solar cycle has a peak-to-trough amplitude of about 0.05 K. On the contrary, Tung and Camp (2008) using similar data found a peak-to-trough solar signature amplitude of about 0.2 K. Douglass and Clader (2002), Gleisner and Thejll (2003), Lean and Rind (2008) and several other studies (White et al., 1997; Scafetta and West, 2005) found that the surface climate signature associated to the 11-year solar cycle has a peak-to-trough amplitude of about 0.1 K. Indeed, this 0.1 K solar cycle signature in the global surface temperature appears to be the most common result among the empirical studies (IPCC, 2007, see p. 674 for details), in particular since 1980. Herein, I will refer to it as the empirical estimate of the 11-year solar cycle signature on global surface temperature since 1980.

Indeed, it is relatively easy to find this signature. Fig. 1 shows the original global surface temperature (Brohan et al., 2006) (curve 'b'), and the volcano (curve 'c') and the ENSO (curve 'd') temperature signatures, as recently estimated by Lockwood's (2008) model. The curve 'a' in the figure shows the temperature detrended of the volcano and of the *detrended* ENSO signature components. The detrended ENSO signature component is obtained by detrending the ENSO signature of its four year moving average smooth curve, which is shown in the figure in the solid thick curve 'd'. This operation does not change the final



**Fig. 1.** Temperature components. The curve (b) is the original global surface temperature (Brohan et al., 2006). The curve (c) is the volcano signature on the temperature as estimated by Lockwood (2008). The thin curve (d) is the ENSO signature on the temperature as estimated by Lockwood (2008); the thick curve is a four year moving average of the thin curve. The thin curve (a) is the surface temperature minus the volcano and ENSO signatures plus the thick smooth curve in (d); the thick smooth curve in (a) is a four year moving average of the thin curve (a). The curves are dislocated at 0.5 K intervals for visual convenience. The \*\*\* symbols indicate the position of the TSI maxima.

results drastically but it is done because the ENSO signature may be capturing part of the solar decadal signature on climate, so this smooth component is put back in the data before a comparison with the solar record is studied. Also Lockwood's residual signal may still contain a solar signature: therefore, it is kept in the data to avoid an inappropriate filtering.

The filtered temperature signal (curve 'a' in Fig. 1) shows a clear decadal oscillation with a peak-to-trough amplitude of at least 0.1 K, which is in phase with the solar cycles. The \*\*\* symbols in the figure indicate the position of the 11-year solar cycle maxima and, on average, there is a lag-time of about one year between the solar maxima and the maxima of the smooth curve 'a', which fits the prediction of some EBMs (see Fig. 1b in North et al., 2004).

The peak to trough empirical amplitude regarding the 11-year solar cycle signature on global surface temperature is not reproduced by traditional GCM and EBM estimates. North et al. (2004) used five different EBMs and found that the climate signature associated to the 11-year solar cycle is, on average, twice than the theoretical predictions (see their figures 1 and 4). The climate models used by Crowley et al. (2000), Foukal et al. (2004) and Hansen et al. (2007) predict an even lower solar signature on climate with a peak to trough amplitude of about 0.02–0.04 K. It is reasonable to think that current climate models are missing important climate mechanisms that amplify the solar signature on climate, also by a large factor (Shaviv, 2008). In fact, these models assume that the sun can alter climate only by means of direct TSI forcing while there are strong evidences that variation of direct UV radiation and cosmic rays, which affect cloud formation and change the albedo, can play a major role in climate change (Pap et al., 2004; Kirkby, 2007). Thus, there are both empirical and theoretical reasons to believe that traditional climate models cannot faithfully reconstruct the solar signature on climate and are significantly underestimating it.

The alternative approach that is based on multilinear regression reconstruction of climate has also some serious shortcomings. Multilinear regression analysis is very sensitive to the shape of the temperature function and to the shape of the functions used as constructors. Thus, uncertainties in the data and/or in the models used to construct the waveform components yield suspicious regression coefficients, as Hegerl et al. (2007) found. Moreover, multilinear regression analysis is based on the

assumption of linearity and independence of the waveforms. These conditions are not sufficiently satisfied particularly for long sequences because, for example, the solar forcing, by altering climate, indirectly alters GHG concentrations too. Thus, GHG forcing cannot be considered independent from solar forcing, as all studies adopting this methodology as well as most EBMs and GCMs have assumed. Consequently these models underestimate the decadal and secular solar contribution to climate change by physical construction.

Finally, while analyzing shorter time series may reduce some uncertainties, when long sequences are analyzed it is fundamental to have a physically accurate model with the correct characteristic time responses. We are left with some arbitrariness: Should we use a model with a characteristic time response with a decadal scale, as the EBMs used by Crowley et al. (2000) and North et al. (2004) assume, or a model that uses as waveforms the forcing functions with short time-lag shift, as Douglass and Clader (2002), Gleisner and Thejll (2003) and Lean and Rind (2008) do? There is a significant difference between the two approaches. In fact, EBMs predict that the time-lag shift and the climate sensitivity to a cyclical forcing greatly increase with decreasing frequency (Wigley, 1988) and, therefore, cannot be kept constant at all temporal scales.

The models used by Douglass and Clader (2002), Gleisner and Thejll (2003), Lean and Rind (2008) would be severely misleading when applied to multidecadal and secular sequences because the amplitude of the low frequency component of the solar signature on climate would be severely underestimated. The multilinear regression approach with fixed time-lag shifts is more appropriate if applied to relatively short time sequences (a few decades) and if the study is limited to evaluate the 11-year solar cycle signature on climate. In fact, if the forcing function is characterized by a unique frequency using the latter method would be approximately equivalent to using a low-pass RC-like filter model or an EBM because a sinus-like function is transformed into a fixed time-lag shifted sinus-like function by a low-pass RC-like filter or any climate model.

Thus, we have to conclude that both traditional climate models and multilinear regression analysis models are not completely satisfactory. The peak to trough empirical amplitude of 0.1 °C regarding the 11-year solar cycle signature on global surface temperature seems to be sufficiently robust because it was obtained with multiple analysis methods by several authors. Moreover, while climate responds to a given forcing with given time responses, the climate characteristic time responses too should be empirically measured, and not just theoretically deduced as in all above studies.

The climate characteristic time responses were empirically measured by Scafetta (2008), and confirmed by Schwartz (2008), by studying the autocorrelation properties of the global surface temperature record, assuming that the memory of its fluctuations is described by autoregressive models. The result is consistent with the fluctuation dissipation theorem that relies on the assumption that the response of a system in thermodynamic equilibrium to a small applied force is the same as its response to a spontaneous fluctuation.

It was found that climate is characterized by two major characteristic time responses: one short with a time scale of a few months ( $\tau_1 = 0.4 \pm 0.1$  yr); and one long with a time scale that may be as short as  $\tau_2 = 8 \pm 2$  yr or, by taking into account statistical biases due to the shortness of the available temperature record, as long as  $\tau_2 = 12 \pm 3$  yr. Thus, the climate system appears to be made of two superimposed systems characterized with a fast and a slow response to the forcings, respectively. For example, the atmosphere has a low heat capacity compared to the ocean and may be characterized by this short characteristic time

response. Also cloud dynamics is relatively fast. On the contrary, the ocean has a large heat capacity that can be responsible for a decadal characteristic time response of the climate system. Moreover, other climate phenomena such as the change of albedo due to the melting of the glacials and natural forestation/desertification processes have a decadal time scale. Indeed, several studies confirm that the climate system may be characterized by both long and short response times (see references in Lockwood, 2008). The average surface temperature record should be the result of the superposition of at least two signals generated by the two kinds of climate processes.

Herein, I propose a model that includes the above two characteristic time responses and I calibrate it on the empirical estimate of the 11-year solar cycle signature on global surface temperature since 1980, which is herein assumed to be 0.1 K. Then, this model is used to predict the solar signature on climate since 1600 and this is compared with paleoclimate temperature reconstructions.

## 2. Total solar irradiance records

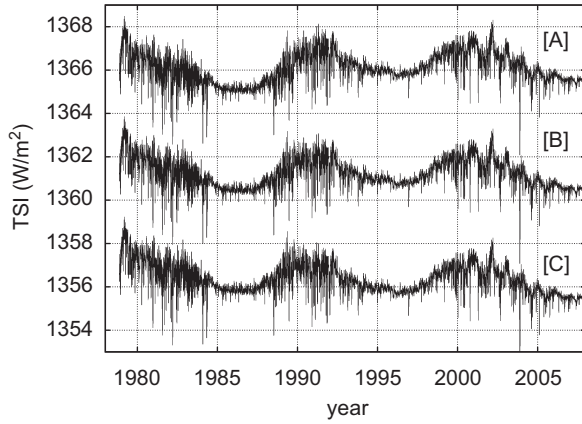
Determining how solar activity has changed on decadal and secular scales is necessary to estimate the solar contribution to climate change. Unfortunately, how solar activity has changed in time is not known with certainty.

Direct TSI observations started in 1978 with satellite measurements. For the period before 1978 only TSI proxy reconstructions have been proposed (for example: Hoyt and Schatten, 1997; Lean, 2000; Wang et al., 2005; Krivova et al., 2007). These TSI proxy models significantly differ from each other, in particular about the amplitude of the secular trends.

Unfortunately, TSI satellite composites since 1978 are not certain either. Two major composites have been proposed: the PMOD TSI composite (Fröhlich and Lean, 1998; Fröhlich, 2004, 2006) which shows an almost constant trend from 1980 to 2000; and the ACRIM TSI composite (Willson and Mordvinov, 2003), which shows an increasing trend during the same period.

GCMs and EBMs adopted by the IPCC (2007) assumed that TSI did not change significantly since 1950 and that, consequently, the sun could not be responsible for the significant warming observed since 1975. These estimates are based on TSI proxy models such as those prepared by Lean (2000) and Wang et al. (2005) which are apparently supported by PMOD (Fröhlich, 2006). However, the above TSI proxy models would be erroneous if the ACRIM TSI composite more faithfully reproduces the TSI behavior during the last decades.

The ACRIM-PMOD controversy is quite complex and, herein, a detailed discussion on this topic is not possible. A recent work by Scafetta and Willson (2009) reopened the issue by providing a careful analysis of the most recent TSI proxy model (Krivova et al., 2007) based on magnetic surface fluxes. This has been done by establishing that a significant degradation of ERBE TSI satellite likely occurred during the ACRIM-gap (1989–1992.5), as the ACRIM team has always claimed. Moreover, Scafetta and Willson invalidated the specific corrections to Nimbus7 that the PMOD TSI composite requires and confirm the opinion of the original Nimbus7 experimental team that no sudden increase of the Nimbus7 sensitivity occurred on September 29, 1989 (see Hoyt's statement in Scafetta and Willson, 2009). Finally, Scafetta and Willson (2009) showed that the agreement between PMOD and the proxy reconstruction about the absence of a trend between the TSI minima in 1986 and 1996 is coincidental because a careful comparison between the proxy model and the unquestioned satellite data before and after the ACRIM-gap proves that the TSI proxy model by Krivova et al. (2007) is missing an upward trend.



**Fig. 2.** Three alternative TSI satellite composites (Scafetta, 2009). The composites [B] and [C] are shifted by  $-5$  and  $-10$   $W/m^2$ , respectively, from the 'native scale' for visual convenience. (Units of  $W/m^2$  at 1 A.U.)

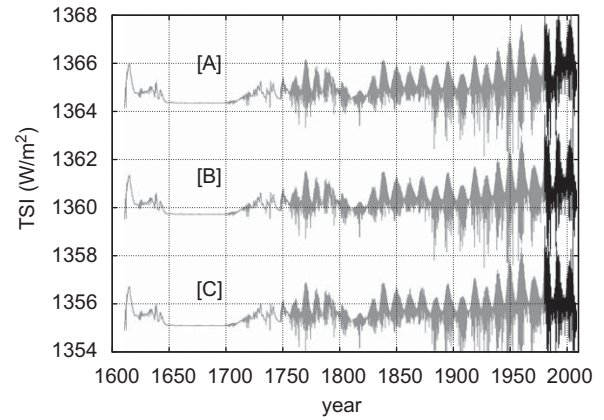
Scafetta and Willson (2009) also showed that during the ACRIM-gap Nimbus7 may have increased its sensitivity by about  $0.3$   $W/m^2$ . While this error is well below that hypothesized by Fröhlich ( $0.86$   $W/m^2$ ) to construct PMOD TSI composite, this discrepancy is compatible with the known uncertainty of Nimbus7 whose sensors, as well as those of ERBE, were not able to make accurate self-calibrations. A direct comparison of the local trends between Nimbus7 and ACRIM1 does show discrepancies that can be as large as  $\pm 0.3$   $W/m^2$  (Scafetta, 2009).

Consequently, herein I assume three TSI composites (Scafetta, 2009) that approximately cover the entire range of possible TSI satellite composites. The composites are constructed by taking into account overlapping regions and continuity at the merging dates. The composite [A] assumes that during the ACRIM-gap the Nimbus7 record is accurate; the composite [C] assumes that during the ACRIM-gap the ERBE record is accurate; the composite [B] is just the arithmetic average between [A] and [C]. Note that the ACRIM composite is approximately between the composites [A] and [B], while the PMOD composite is approximately reproduced by the composite [C]. All configurations between the composites [A] and [C] are ideally possible according to the published TSI satellite records. As Fig. 2 shows, the possible range of TSI difference between the two solar minima in 1986 and 1996 is  $\Delta I \approx 0.3 \pm 0.4$   $W/m^2$ .

A secular TSI record can be obtained, even if imperfectly, by merging a TSI secular proxy reconstruction (here I use the most recent TSI proxy reconstruction by Solanki's team, Krivova et al., 2007) with the three TSI satellite composites shown in Fig. 2. The 1980–1990 TSI mean values are used for this merging. The three composed TSI records are shown in Fig. 3 and indicated with [A], [B] and [C].

### 3. An empirical climate model with short and long characteristic time responses

As explained in the Introduction, climate appears to be characterized by at least two major characteristic time constants by both theoretical and empirical findings (Scafetta, 2008; Schwartz, 2008): a short characteristic time constant,  $\tau_1 = 0.4 \pm 0.1$  yr, and a decadal one from  $\tau_2 = 8 \pm 2$  yr to  $\tau_2 = 12 \pm 3$  yr. Consequently, the signature of a given forcing  $F(t)$  on the global surface temperature,  $\Delta T_F(t)$ , is the superposition of at least two major signals: one generated by the processes with a short time response and the other generated by those processes with a long time response to a forcing. In the case of the solar



**Fig. 3.** Three alternative secular TSI records constructed by merging the TSI proxy reconstruction by Solanki's team (Krivova et al., 2007) with the three alternative TSI satellite composites shown in Fig. 1. The composites [B] and [C] are shifted by  $-5$  and  $-10$   $W/m^2$ , respectively, from the 'native scale' for visual convenience. (Units of  $W/m^2$  at 1 A.U.)

forcing we should write

$$\Delta T_S(t) = \Delta T_{1S}(t) + \Delta T_{2S}(t), \quad (2)$$

where

$$\frac{d\Delta T_{1S}(t)}{dt} = \frac{k_{1S}\Delta I(t) - \Delta T_{1S}(t)}{\tau_{1S}}, \quad (3)$$

$$\frac{d\Delta T_{2S}(t)}{dt} = \frac{k_{2S}\Delta I(t) - \Delta T_{2S}(t)}{\tau_{2S}}. \quad (4)$$

The parameters  $\tau_{S1}$  and  $\tau_{S2}$  are the short and long climate characteristic time responses, and  $k_{1S}$  and  $k_{2S}$  are the average equilibrium climate sensitivities of the two kind of processes. With appropriate parameters, the above model simulates the performance of any energy balance models, as those used by North et al. (1981) and Crowley et al. (2000).

The above equations assume that the TSI record is used as a proxy for the overall climate sensitivity to solar changes. Thus, the parameters  $k_{1S}$  and  $k_{2S}$  do not have the meaning of climate sensitivity to TSI variation as assumed in the EBMs and GCMs, but they have a meaning of climate sensitivity to 'total solar activity' variation in TSI units. The difference is fundamental because climate is also altered by solar changes alternative to TSI changes. The empirical methodology I propose to evaluate  $k_{1S}$  and  $k_{2S}$  is summarized in four steps:

- (1) We are interested in evaluating the solar signal on climate. This is determined by Eq. (2) which depends on four parameters,  $k_{1S}$ ,  $\tau_{1S}$ ,  $k_{2S}$  and  $\tau_{2S}$ .
- (2) For the fast process I set  $\tau_{1S} = 0.4$  yr as empirically measured (Scafetta, 2008), and  $k_{1S} = 0.053$   $K/W m^{-2}$ . The justification for the latter value is that the climate system has no sufficient time to physically, chemically and biologically evolve, that is, I assume that on this short time scale the chemical composition of the air, the ice cover, the forest cover and all other major physical climate variables do not change much. In this situation the climate sensitivity can be approximately calculated as

$$k_{1S} = \frac{dT}{dI} = \frac{T}{4I} = 0.053$$
  $K/W m^{-2}$ , (5)

where the average Earth surface temperature is  $T = 289$  K and the average TSI is  $I = 1365$   $W/m^2$ . The above value is easily calculated by differentiating the energy

balance law,

$$T^4 = \frac{g_T(1 - a_T)I}{4\sigma} = h(T)I, \quad (6)$$

where  $\sigma$  is the Stefan–Boltzmann constant. The albedo ‘ $a_T$ ’ as well as any additional climate function ‘ $g_T$ ’, which is needed to correct the black-body Stefan–Boltzmann law to make it compatible with the surface Earth’s climate system, is assumed to be *constant* on very short time scales. The function ‘ $g_T$ ’ would include all feedback mechanisms, emissivity, dispersion of energy in the ocean, etc. Thus, for short time scales it is assumed that the function  $h(T) = g_T(1 - a_T) = \text{const}$ . Note that also Lockwood (2008, Table 1) found that a climate sensitivity of  $k = 0.052 \text{ K/W m}^{-2}$  to solar changes is associated to a monthly characteristic time response.

- (3) The long characteristic time constant of climate is set to be as short as  $\tau_{S2} = 8 \text{ yr}$  or, alternatively, as long as  $\tau_{S2} = 12 \text{ yr}$ , as Scafetta (2008) and Schwartz (2008) have found.
- (4) The last free parameter  $k_{2S}$  is determined by imposing that the peak-to-trough amplitude of the global climate response to the 11-year solar cycle is about 0.1 K near the surface after 1980, as reported by the IPCC (2007, p. 674 for details), as found by several empirical studies discussed in the Introduction and as shown in Fig. 1.

A reader should be careful here because s/he might mistakenly believe that I am not taking into account the other climate forcings such as volcano and GHG forcings. The four parameters ( $k_{1S}$ ,  $\tau_{1S}$ ,  $k_{2S}$  and  $\tau_{S2}$ ) of the model have been set by using findings that do take into account the other forcings. For example,  $k_{1S}$  is directly calculated from the energy balance law;  $\tau_{S1}$  and  $\tau_{S2}$  are measured from the autocorrelation properties of temperature residual after detrending a theoretical effect of all forcings (Scafetta, 2008); the peak-to-trough amplitude of the global climate signature to the 11-year solar cycle is found to be about 0.1 K near the surface after removing the volcano, GHG + aerosol and ENSO signal (Douglass and Clader, 2002; Lean and Rind, 2008). These values have been estimated with the best data available since 1980. Thus, by using such values as constraints of the model I am taking into account the other forcings too, but implicitly, through the constraints.

Eq. (6) cannot be used directly because it is not known how the climate function  $h(T)$  changes as a function of the temperature. Thus, I use the 0.1 K solar cycle signature near the surface as a natural oscillatory output that enables us to determine the value of the climate modulation transfer function to the 11-year solar variation, and from this I can determine  $k_{2S}$ , as explained below.

The climate sensitivity to the 11-year solar cycle is about  $Z(11) = 0.11 \pm 0.02 \text{ K/W m}^{-2}$  (Douglass and Clader, 2002; Scafetta and West, 2005), that is, an 11-year solar cycle of about  $1 \text{ W/m}^2$  causes a peak to trough cycle of about 0.1 °C on the global surface. Thus, Eq. (2) is solved by the system:

$$Z(11) \approx Z_1(11) + Z_2(11), \quad (7)$$

$$k_{1S} = Z_1(11) \sqrt{1 + \left(\frac{2\pi\tau_1}{11}\right)^2}, \quad (8)$$

$$k_{2S} = Z_2(11) \sqrt{1 + \left(\frac{2\pi\tau_2}{11}\right)^2}, \quad (9)$$

where ‘11’ refers to the period of the 11-year solar cycle, and  $Z_1(11)$  and  $Z_2(11)$  are the climate sensitivities to the 11-year solar cycle relative to climate processes with fast and slow characteristic time responses, respectively.

**Table 1**

The parameters used in the empirical bi-scale climate model equation (2) for two alternative values of  $\tau_2$ .

	Case 1	Case 2
$\tau_1$	0.4 yr	0.4 yr
$\tau_2$	8 yr	12 yr
$k_{1S}$	0.053 K/W m <sup>-2</sup>	0.053 K/W m <sup>-2</sup>
$k_{2S}$	0.28 K/W m <sup>-2</sup>	0.41 K/W m <sup>-2</sup>
$k_S$	0.33 K/W m <sup>-2</sup>	0.46 K/W m <sup>-2</sup>
$Z_1(11)$	0.051 K/W m <sup>-2</sup>	0.051 K/W m <sup>-2</sup>
$Z_2(11)$	0.059 K/W m <sup>-2</sup>	0.059 K/W m <sup>-2</sup>
$Z(11)$	0.11 K/W m <sup>-2</sup>	0.11 K/W m <sup>-2</sup>

The above system can be easily solved by evaluating first  $Z_1(11)$ , then  $Z_2(11)$  and, finally,  $k_{2S}$ . By using Eq. (8) with  $\tau_1 = 0.4 \text{ yr}$  and  $k_{1S} = 0.053 \text{ K/W m}^{-2}$ , it is found:  $Z_1(11) \approx 0.051 \text{ K/W m}^{-2}$  and  $Z_2(11) \approx 0.059 \text{ K/W m}^{-2}$ . The former value is about 46% of the empirical climate sensitivity to the 11-year solar cycle  $Z(11) = 0.11 \pm 0.02 \text{ K/W m}^{-2}$ . Thus, the peak-to-trough amplitude of the global climate response to the 11-year solar cycle associated to the fast processes is about 0.046 K near the surface against the empirical value of 0.1 K. If  $\tau_2 \approx 8 \text{ yr}$ , then  $k_{2S} \approx 0.28 \text{ K/W m}^{-2}$ ; if  $\tau_2 \approx 12 \text{ yr}$ , then  $k_{2S} \approx 0.41 \text{ K/W m}^{-2}$ . With the above values the overall climate sensitivity to solar changes at equilibrium is  $\approx k_{1S} + k_{2S} \approx 0.33 \text{ K/W m}^{-2}$  and  $k_S \approx 0.46 \text{ K/W m}^{-2}$ , respectively. For convenience, the parameters used in the model are summarized in Table 1.

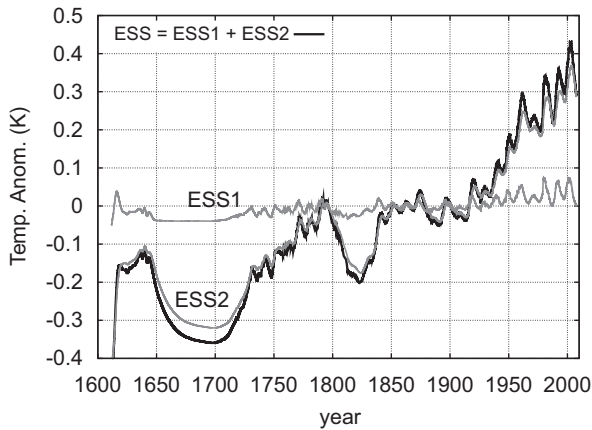
#### 4. The empirical solar signature on climate

Fig. 4 shows the empirical solar signature (ESS) on climate under the assumptions and scenarios mentioned above. ESS1 and ESS2 are the empirical solar signatures induced by the climate processes with fast,  $\tau_{S1}$ , and slow,  $\tau_{S2}$ , characteristic time responses, respectively. The curves ESS1, ESS2 and their superposition are shown in the particular case in which  $\tau_2 = 12 \text{ yr}$  and the TSI record [B] is adopted.

The curve ESS1 shows a very small multidecadal and secular variability. According to ESS1, the sun has induced about +0.05 K of warming from 1900 to 2000. Because the global warming observed since 1900 has been about 0.8 K, the sun would have caused about 6% of the observed warming through those mechanisms that respond quickly to changes in TSI. This result does not differ significantly from the IPCC (2007) average estimates obtained with the current climate models.

However, the small secular variability shown in ESS1 is insufficient to explain the preindustrial secular variability of the temperature, as estimated by the paleoclimate proxy temperature reconstructions (North et al., 2006). These paleoclimate temperature reconstructions show that the preindustrial temperature variability (from 1600 to 1900) ranges from 0.05 to 0.5 K, while ESS1 in Fig. 4 shows a preindustrial temperature variability of about 0.04 K. The small GHG variations observed before 1900 and volcano activity could fill the difference only in the extreme case that the preindustrial climate is almost stable, as in the *hockey stick* temperature graph by Mann et al. (1999).

However, the hockey stick temperature graph is unlikely because the Medieval Warm Period and the Little Ice Age, which occurred during a maximum and a minimum of solar activity, respectively, are supported by numerous historical facts (Hoyt and Schatten, 1997) and data from several regions of the Earth (Loehle and McCulloch, 2008). A global warming between the periods 1650–1700 and 1850–1900, at least equal to the average among the paleoclimate temperature reconstructions and more



**Fig. 4.** An example of ESS curves. ESS1 curve shows that the empirical solar signature on climate obtained with Eq. (8) with  $\tau_1 = 0.4$  yr and  $k_{15} = 0.053$  K/W m<sup>-2</sup>. ESS2 curve shows that the empirical solar signature on climate obtained with Eq. (9) with  $\tau_2 = 12$  yr and  $k_{25} = 0.41$  K/W m<sup>-2</sup>. ESS (black line) shows the superposition of ESS1 and ESS2. The model is forced with the TSI reconstruction [B] shown in Fig. 3. The figure shows temperature anomalies relative to the 1895–1905 average.

( $0.3\text{ K} < \Delta T < 0.5\text{ K}$ ), can be considered more realistic. Thus, unless most of the paleoclimate proxy temperature reconstructions are severely erroneous and the historical evidences are severely misleading, Fig. 4 further stresses that the processes generating ESS1 solar signature on climate alone cannot explain climate change on a secular scale.

Fig. 4 shows that most of the multidecadal and secular variability are captured by ESS2 curve. The climate processes with a slow time response to TSI changes are necessary to correctly interpret the multidecadal and secular climate changes, also since 1980. This large sensitivity is mostly due to the fact that the climate function  $h(T)$ , that appears in Eq. (6), is temperature dependent. On large time scales its temperature dependency cannot be neglected because it has a large impact on climate.

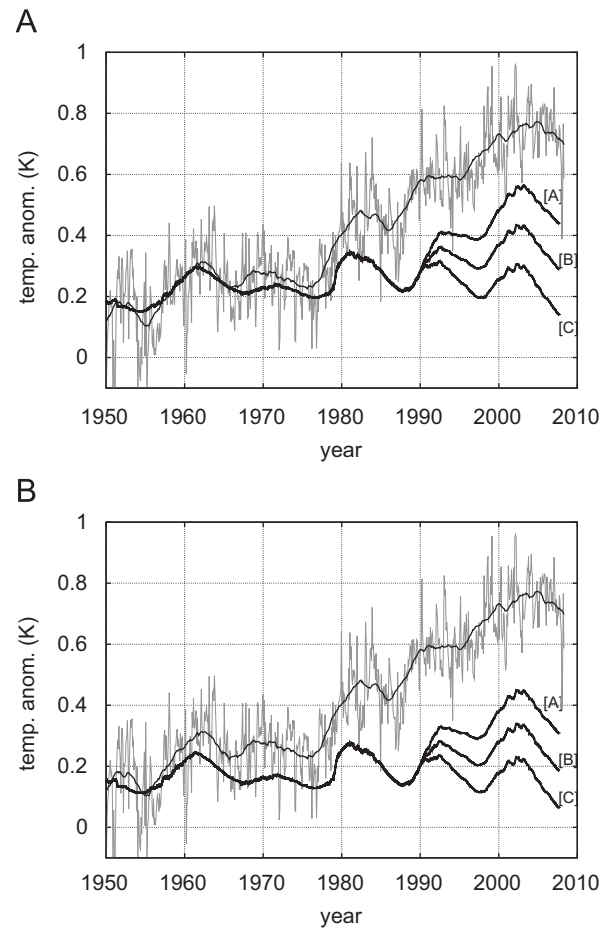
For example, if a  $1\text{ W/m}^2$  TSI increase causes at equilibrium an increase of the function  $h(T)$  by just 0.5% it is easy to calculate that the climate sensitivity to TSI change would be  $k_S = \delta T / \delta I = 0.41\text{ K/W m}^{-2}$ . This value is eight times larger than  $k_{15} = 0.053\text{ K/W m}^{-2}$  as it was calculated by assuming that the function  $h(T)$  is constant. This sensitivity is easily calculated with the following equation:

$$\left[ \frac{T_0 + \delta T}{T_0} \right]^4 = \frac{h(T_0 + \delta T) I_0 + \delta I}{h(T_0) I_0}, \quad (10)$$

where  $T_0 = 289\text{ K}$  and  $I_0 = 1365\text{ W/m}^2$ . So, even small temperature dependency of the energy-balance equation parameters, such as the albedo and the emissivity, can amplify the climate sensitivity to solar changes by a large factor, as also Shaviv (2008) noticed.

Fig. 4 also shows that the decadal variability associated to the 11-year solar cycle derives almost evenly from both kind of climate processes with fast and slow characteristic time responses, as reproduced in the ESS1 and ESS2 curves.

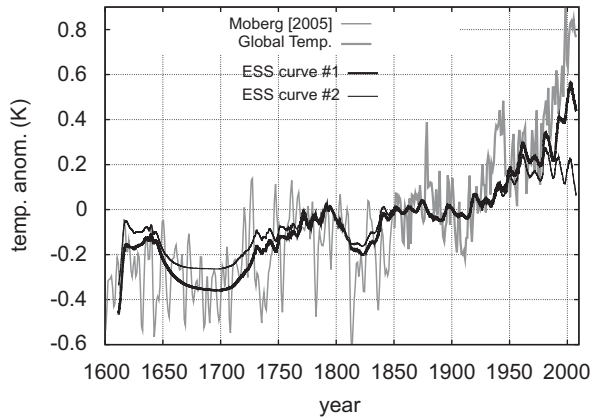
Figs. 5A and B show the ESS curves obtained by superimposing ESS1 and ESS2 curves under different assumptions and scenarios against the global surface temperature record since 1950 detrended of the volcano and ENSO signatures (see curve ‘a’ in Fig. 1). Figs. 5A and B use  $\tau_2 = 12$  and 8 yr, respectively. According to the figures there would be no significant solar induced warming since 1950 if the TSI record [C] is used; in this case the trend would be slightly negative since 1980, as also Lockwood



**Fig. 5.** ESS curves against the filtered global surface temperature record shown in the curve (a) of Fig. 2. [A] The ESS curves are obtained with  $\tau_1 = 0.4$  yr,  $\tau_2 = 12$  yr and  $k_{15} = 0.053$  K/W m<sup>-2</sup>,  $k_{25} = 0.41$  K/W m<sup>-2</sup>. [B] The ESS curves (black) are obtained with  $\tau_1 = 0.4$  yr,  $\tau_2 = 8$  yr and  $k_{15} = 0.052$  K/W m<sup>-2</sup>,  $k_{25} = 0.28$  K/W m<sup>-2</sup>. The model is forced with the TSI reconstruction [A], [B] and [C] shown in Fig. 3. The figure shows temperature anomalies relative to the 1895–1905 average.

(2008) found using PMOD. Instead, the sun can induce as much as 65% of the observed warming if the TSI record [A] is used. On average the sun may have induced a significant warming since 1950 and since 1980, respectively. Figs. 5A and B show also the good correspondence between the 11-year solar cycle signatures and the cycles observed in the four year moving average smooth curve of the filtered global surface temperature record.

Finally, Fig. 6 shows a four century comparison between two ESS curves and a paleoclimate temperature reconstruction (Moberg et al., 2005) from 1600 to 1850 and the global surface temperature record since 1850. The two ESS curves shown in the figure are those with the highest secular variability (curve #1:  $\tau_2 = 12$  yr and with TSI [A]), and with the lowest secular variability (curve #2:  $\tau_2 = 8$  yr and with TSI [C]), respectively. The figure shows that the ESS signals reproduce quite well the cooling and warming patterns observed in the temperature record for four centuries, in particular with the ESS curve #1. Since 1980 there is a wide fork whose extremes depend on which TSI satellite composite is used. If the TSI composite [C] is used, the sun would have caused just a slight cooling. If the TSI composite [A] is used, the sun would have caused a significant warming. Thus, on average it is not unlikely that the sun has induced a significant warming since 1980 as it was inferred by Scafetta and Willson (2009).



**Fig. 6.** ESS curves against a paleoclimate temperature reconstruction (Moberg et al., 2005) from 1600 to 1850 (thin gray line) and global surface temperature record since 1950 (Brohan et al., 2006) (thick black line). The ESS (thick gray) curve is obtained with  $\tau_1 = 0.4$  yr,  $\tau_2 = 12$  yr and  $k_{1S} = 0.053$  K/Wm<sup>-2</sup>,  $k_{2S} = 0.41$  K/Wm<sup>-2</sup> with the model forced with the TSI reconstruction [A]. The ESS (thin black) curve is obtained with  $\tau_1 = 0.4$  yr,  $\tau_2 = 8$  yr and  $k_{1S} = 0.053$  K/Wm<sup>-2</sup>,  $k_{2S} = 0.28$  K/Wm<sup>-2</sup> with the model forced with the TSI reconstruction [C].

## 5. Conclusion

Herein I have analyzed the solar contribution to global mean air surface temperature change. A comprehensive interpretation of multiple scientific findings indicates that the contribution of solar variability to climate change is significant and that the temperature trend since 1980 can be large and upward. However, to correctly quantify the solar contribution to the recent global warming it is necessary to determine the correct TSI behavior since 1980. Unfortunately, this cannot be done with certainty yet. The PMOD TSI composite, which has been used by the IPCC and most climate modelers, has been found to be based on arbitrary and questionable assumptions (Scafetta and Willson, 2009). Thus, it cannot be excluded that TSI increased from 1980 to 2000 as claimed by the ACRIM scientific team.

The IPCC (2007) claim that the solar contribution to climate change since 1950 is negligible may be based on wrong solar data in addition to the fact that the EBMs and GCMs there used are missing or poorly modeling several climate mechanisms that would significantly amplify the solar effect on climate. When taken into account the entire range of possible TSI satellite composite since 1980, the solar contribution to climate change ranges from a slight cooling to a significant warming, which can be as large as 65% of the total observed global warming.

The above wide range strongly contrasts with some recent estimates such as those found by Lockwood (2008), who calculated that the solar contribution to global warming is negligible since 1980: the sun could have caused from a  $-3.6\%$  using PMOD to a  $+3.1\%$  using ACRIM. In fact, Lockwood's model is approximately reproduced by the ESS1 curve that refers to the solar signature on climate as produced only by those processes characterized with a short time response to a forcing. Indeed, the characteristic time constants that Lockwood found with his complicated nonlinear multiregression analysis are all smaller than one year (see his table 1) and the climate sensitivity to TSI that he found is essentially equal to my  $k_{1S}$ ! Likely, Lockwood's model was unable to detect the climate sensitivity to solar changes induced by those climate mechanisms that have a decadal characteristic time response to solar forcing: mechanisms that must be present in nature for physical reasons. As proven above, these mechanisms are fundamental to properly model the decadal and secular trends of the temperature because they yield high climate sensitivities to solar changes.

Analogously, my findings contrast with Lean and Rind (2008), who estimated that the sun has caused less than 10% of the observed warming since 1900. The model used by Lean and Rind, like Lockwood's model, is not appropriate to evaluate the multi-decadal solar effect on climate. In fact, Lean and Rind do not use any EBM to generate the waveforms they use in their regression analysis. These authors assume that the temperature is just the linear superposition of the forcing functions with some fixed time-lags. They also ignore ACRIM TSI satellite composite. While Lean and Rind's method may be sufficiently appropriate for determining the 11-year solar cycle signature on the temperature records there used, the same method is not appropriate on multidecadal scales because climate science predicts that time-lag and the climate sensitivity to a forcing is frequency dependent. Consequently, as Lockwood's model, Lean and Rind's model too misses the larger sensitivity that the climate system is expected to present to solar changes at the decadal and secular scales.

I have shown that the processes with a long time response to climate forcing are fundamental to correctly understanding the decadal and secular solar effect on climate (see ESS2 curve). With simple calculations it is possible to determine that if the climate parameters (such as the albedo and the emissivity, etc.) change slowly with the temperature, the climate sensitivity to solar changes is largely amplified as shown in Eq. (10).

This finding suggests that the climate system is hypersensitive to the climate function  $h(T)$  and even small errors in modeling  $h(T)$  (for example, in modeling how the albedo, the cloud cover, water vapor feedback, the emissivity, etc. respond to changes of the temperature on a decadal scale) would yield the climate models to fail, even by a large factor, to appropriately determine the solar effect on climate on decadal and secular scale. For similar reasons, the models also present a very large uncertainty in evaluating the climate sensitivity to changes in CO<sub>2</sub> atmospheric concentration (Knutti and Hegerl, 2008). This large sensitivity of the climate equations to physical uncertainty makes the adoption of traditional EBMs and GCMs quite problematic.

About the result depicted in Fig. 6, the ESS curve has been evaluated by calibrating the proposed empirical bi-scale model only by using the information deduced: (1) by the instrumental temperature and the solar records since 1980 about the 11-year solar signature on climate; (2) by the findings by Scafetta (2008) and Schwartz (2008) about the long and short characteristic time responses of the climate as deduced with autoregressive models. The paleoclimate temperature reconstructions were not used to calibrate the model, as done in Scafetta and West (2007). Thus, the finding shown in Fig. 6 referring to the preindustrial era has also a predictive meaning, and implies that climate had a significant preindustrial variability which is incompatible with a hockey stick temperature graph.

## Acknowledgment

N.S. thanks the Army Research Office for research support (Grant W911NF-06-1-0323).

## References

- Brohan, P., et al., 2006. Uncertainty estimates in regional and global observed temperature changes: a new dataset from 1850. *J. Geophys. Res.* 111, D12106 10.1029/2005JD006548.
- Crowley, T.J., et al., 2000. Causes of climate change over the past 1000 years. *Science* 289, 270–277.
- Douglass, D.H., Clader, B.D., 2002. Climate sensitivity of the Earth to solar irradiance. *Geophys. Res. Lett.* 29101029/2002GL015345.
- Douglass, D.H., Christy, J.R., Pearson, B.D., Singer, S.F. 2007. A comparison of tropical temperature trends with model predictions. *Int. J. Climatol.* 28, 1693–1701, doi:10.1002/joc.1651.

- Eddy, J.A., 1976. The Maunder minimum. *Science* 192, 1189–1202.
- Eichler, A., Olivier, S., Henderson, K., Laube, A., Beer, J., Papina, T., Gaggeler, H.W., Schwikowski, M., 2009. Temperature response in the Altai region lags solar forcing. *Geophys. Res. Lett.* 36, L01808 10.1029/2008GL035930.
- Foukal, P., North, G., Wigley, T., 2004. A stellar view on solar variations and climate. *Science* 306, 68–69.
- Fröhlich, C., Lean, J., 1998. The Sun's total irradiance: cycles, trends and related climate change uncertainties since 1978. *Geophys. Res. Lett.* 25, 4377–4380 10.1029/1998GL900157.
- Fröhlich, C., 2004. Solar irradiance variability. In: *Solar Variability and its Effect on Climate*. Geophysical Monograph, vol. 141. American Geophysical Union, Washington, DC, USA, pp. 97–110 (Chapter 2: Solar energy flux variations).
- Fröhlich, C., 2006. Solar irradiance variability since 1978: revision of the PMOD composite during solar cycle 21. *Space Sci. Rev.* 125, 53–65 10.1007/s11214-006-9046-5.
- Gleisner, H., Thejll, P., 2003. Patterns of tropospheric response to solar variability. *Geophys. Res. Lett.* 30, 1711.
- Hegerl, G.C., et al., 2006. Climate sensitivity constrained by temperature reconstructions over the past seven centuries. *Nature* 440, 1029–1032.
- Hegerl, G.C., Crowley, T.J., Allen, M., et al., 2007. Detection of human influence on a new, validated 1500-year temperature reconstruction. *J. Climate* 20, 650–666.
- Hansen, J., et al., 2007. Climate simulations for 1880–2003 with GISS modelE. *Climate Dynam.* 29, 661–696 10.1007/s00382-007-0255-8.
- Hoyt, D.V., Schatten, K.H., 1997. *The Role of the Sun in the Climate Change*. Oxford University Press, New York.
- Idso, C., Singer, S.F., 2009. *Climate Change Reconsidered: 2009 Report of the Nongovernmental Panel on Climate Change (NIPCC)*. The Heartland Institute, Chicago, IL.
- Intergovernmental Panel on Climate Change, 2007. In: Solomon, S., et al. (Eds.), *Climate Change 2007: The Physical Science Basis*. Cambridge University Press, New York.
- Kirkby, J., 2007. Cosmic rays and climate. *Surv. Geophys.* 28, 333–375.
- Krivova, N.A., Balmaceda, L., Solanki, S.K., 2007. Reconstruction of solar total irradiance since 1700 from the surface magnetic flux. *Astron. Astrophys.* 467, 335–346.
- Knutti, R., Hegerl, G.C., 2008. The equilibrium sensitivity of the Earth's temperature to radiation changes. *Nat. Geosci.* 1, 735–743 10.1038/ngeo337.
- Lean, J., 2000. Evolution of the Sun's spectral irradiance since the Maunder minimum. *Geophys. Res. Lett.* 27, 2425–2428.
- Lean, J.L., Rind, D.H., 2008. How natural and anthropogenic influences alter global and regional surface temperatures: 1889 to 2006. *Geophys. Res. Lett.* 35, L18701, doi:10.1029/2008GL034864.
- Loehle, C., McCulloch, J.H., 2008. Correction to: A 2000-year global temperature reconstruction based on non-tree ring proxies. *Energy Environ.* 19, 93–100.
- Lockwood, M., 2008. Recent changes in solar output and the global mean surface temperature. III. Analysis of the contributions to global mean air surface temperature rise. *Proc. R. Soc. A* 464, 1–17 10.1098/rspa.2007.0348.
- van Loon, H., Labitzke, K., 2000. The influence of the 11-year solar cycle on the stratosphere below 30 km: a review. *Space Sci. Rev.* 94, 259–278.
- Mann, M.E., Bradley, R.S., Hughes, M.K., 1999. Northern hemisphere temperatures during the past millennium: inferences, uncertainties, and limitations. *Geophys. Res. Lett.* 26, 759–762.
- Moberg, A., et al., 2005. Highly variable northern hemisphere temperatures reconstructed from low- and high-resolution proxy data. *Nature* 433, 613–617.
- North, G.R., Cahalan, R.F., Coakley Jr., J.A., 1981. Energy balance climate models. *Rev. Geophys.* 19, 91–121.
- North, G.R., Wu, Q., Stevens, M.J., 2004. Detecting the 11-year solar cycle in the surface temperature field. In: *Solar Variability and its Effect on Climate*. Geophysical Monograph, vol. 141. American Geophysical Union, Washington, DC, USA, pp. 251–259.
- North, G., et al., 2006. *Surface Temperature Reconstructions for the Last 2,000 Years*. The National Academies Press.
- Pap, J.M., et al. (Eds.), 2004. *Solar Variability and its Effects on Climate*. Geophysical Monograph Series, vol. 141. American Geophysical Union, Washington, DC.
- Scafetta, N., West, B.J., 2005. Estimated solar contribution to the global surface warming using the ACRIM TSI satellite composite. *Geophys. Res. Lett.* 32, L023849 10.1029/2005GL023849.
- Scafetta, N., West, B.J., 2006a. Reply to comments by J. Lean on "Estimated solar contribution to the global surface warming using the ACRIM TSI satellite composite". *Geophys. Res. Lett.* 33, doi: 10.1029/2006GL025668.
- Scafetta, N., West, B.J., 2006b. Phenomenological solar signature in 400 years of reconstructed Northern Hemisphere temperature record. *Geophys. Res. Lett.* 33, L027142 10.1029/2006GL027142.
- Scafetta, N., West, B.J., 2007. Phenomenological reconstructions of the solar signature in the NH surface temperature records since 1600. *J. Geophys. Res.* 112, D24S03 10.1029/2007JD008437.
- Scafetta, N., West, B.J., 2008. Is climate sensitive to solar variability?. *Phys. Today* 3, 50–51.
- Scafetta, N., 2008. Comment on "Heat capacity, time constant, and sensitivity of Earth's climate system" by S.E. Schwartz. *J. Geophys. Res.* 113, D15104 10.1029/2007JD009586.
- Scafetta, N., 2009. Total solar irradiance satellite composites and their phenomenological effect on climate. On a special volume of the Geological Society of America, in press. arXiv:0908.0792v1 <http://arxiv.org/abs/0908.0792v1> [astro-ph.SR].
- Scafetta, N., Willson, R., 2009. ACRIM-gap and TSI trend issue resolved using a surface magnetic flux TSI proxy model. *Geophys. Res. Lett.* 36, L05701 10.1029/2008GL036307.
- Schwartz, S.E., 2008. Reply to comments by G. Foster et al., R. Knutti et al., and N. Scafetta on "Heat capacity, time constant, and sensitivity of Earth's climate system". *J. Geophys. Res.* 113, D15105 10.1029/2008JD009872.
- Shaviv, N.J., 2008. Using the oceans as a calorimeter to quantify the solar radiative forcing. *J. Geophys. Res.* 113, A11101 10.1029/2007JA012989.
- Soon, W.W.-H., 2009. Solar arctic-mediated climate variation on multidecadal to centennial timescales: empirical evidence, mechanistic explanation, and testable consequences. *Phys. Geogr.* 30, 144–184.
- Svensmark, H., Friis-Christensen, E., 2007. Reply to Lockwood and Fröhlich—the persistent role of the Sun in climate forcing. *Scientific Report 3*, Danish National Space Center.
- Tung, K.K., Camp, C.D., 2008. Solar cycle warming at the Earth's surface in NCEP and ERA-40 data: A linear discriminant analysis. *J. Geophys. Res.* 113, D05114, doi:10.1029/2007JD009164.
- Wang, Y.-M., Lean, J.L., Sheeley Jr., N.R., 2005. Modeling the Sun's magnetic field and irradiance since 1713. *Astrophys. J.* 625, 522–538.
- White, W.B., Lean, J., Cayan, D.R., Dettinger, M.D., 1997. Response of global upper ocean temperature to changing solar irradiance. *J. Geophys. Res.* 102, 3255–3266.
- Wigley, T.M.L., 1988. The climate of the past 10,000 years and the role 366 of the Sun. In: Stephenson, F.R., Wolfendale, A.W. (Eds.), *Secular Solar and Geomagnetic Variations in the Last 367 10,000 Years*. Springer, New York, pp. 209–224.
- Willson, R.C., Mordvinov, A.V., 2003. Secular total solar irradiance trend during solar cycles 21–23. *Geophys. Res. Lett.* 30, 1199–1202 10.1029/2002GL016038.